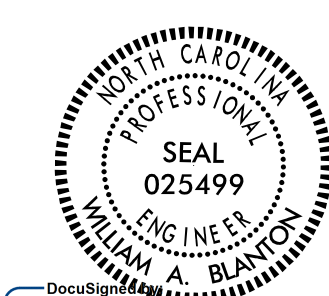

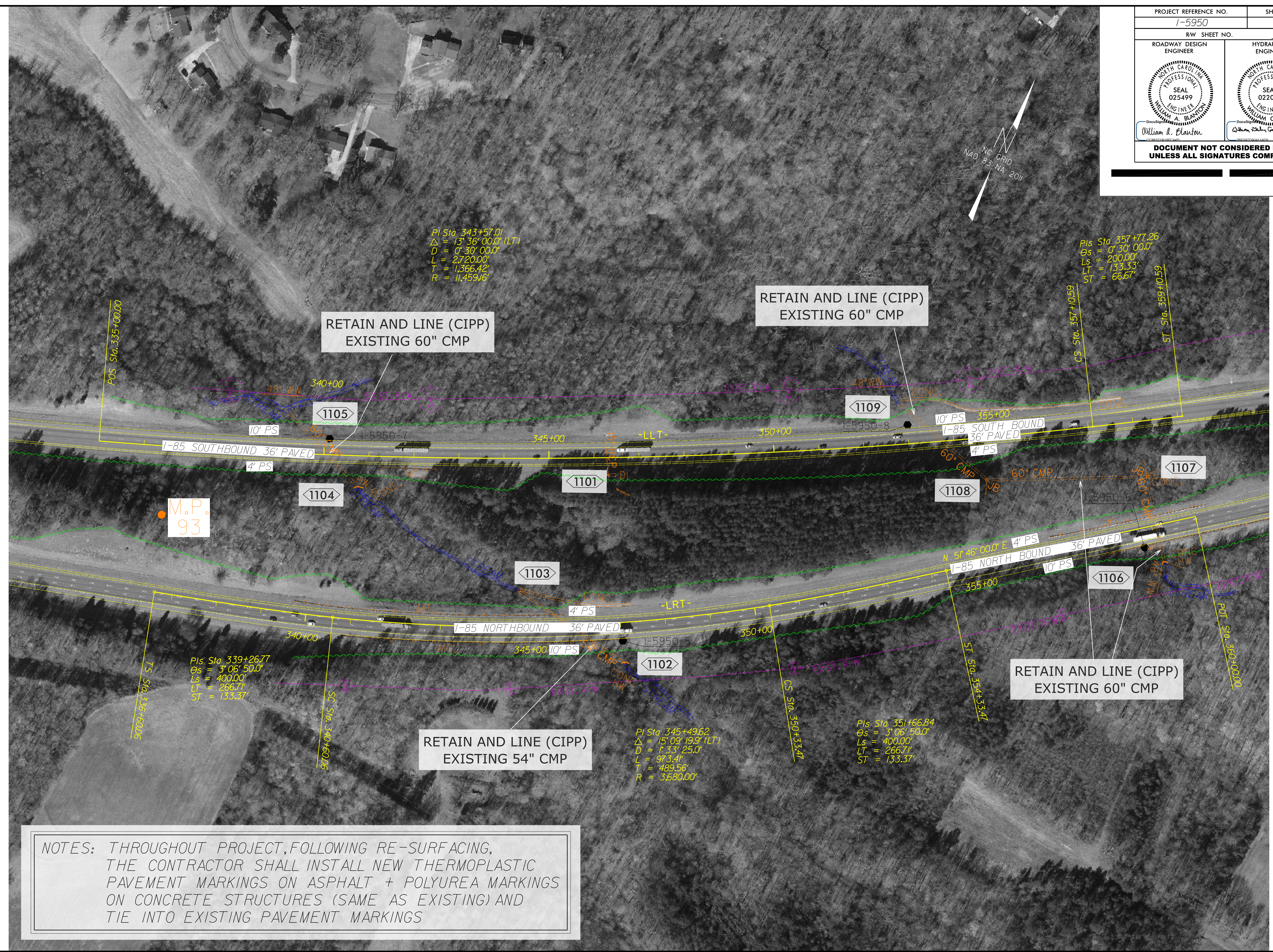


8/17/99
 06-JUL-2022 14:34
 S:\Project Development\1-5950-185-Davidson\Roadway\1-5950-185-Davidson\Roadway\1-5950-185-Davidson.dwg
 S:\Project Development\1-5950-185-Davidson\Roadway\1-5950-185-Davidson.dwg
 S:\Project Development\1-5950-185-Davidson\Roadway\1-5950-185-Davidson.dwg

PROJECT REFERENCE NO. 1-5950	SHEET NO. 11
R/W SHEET NO.	
ROADWAY DESIGN ENGINEER	HYDRAULICS ENGINEER
 WILLIAM A. BLANTON ENGINEER	 WILLIAM G. CALHOUN ENGINEER
DOCUMENT NOT CONSIDERED FINAL UNLESS ALL SIGNATURES COMPLETED	

REVISIONS



NOTES: THROUGHOUT PROJECT, FOLLOWING RE-SURFACING, THE CONTRACTOR SHALL INSTALL NEW THERMOPLASTIC PAVEMENT MARKINGS ON ASPHALT + POLYUREA MARKINGS ON CONCRETE STRUCTURES (SAME AS EXISTING) AND TIE INTO EXISTING PAVEMENT MARKINGS