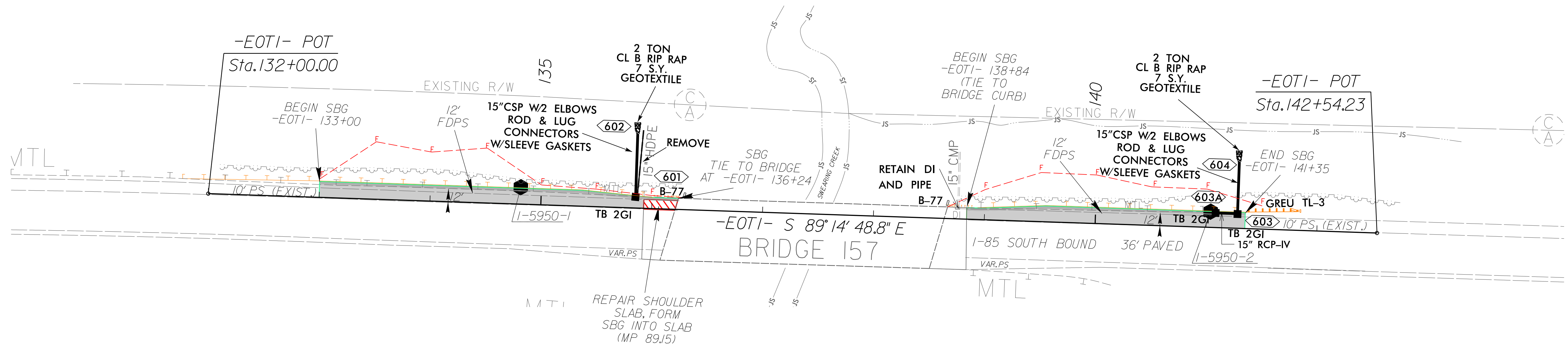
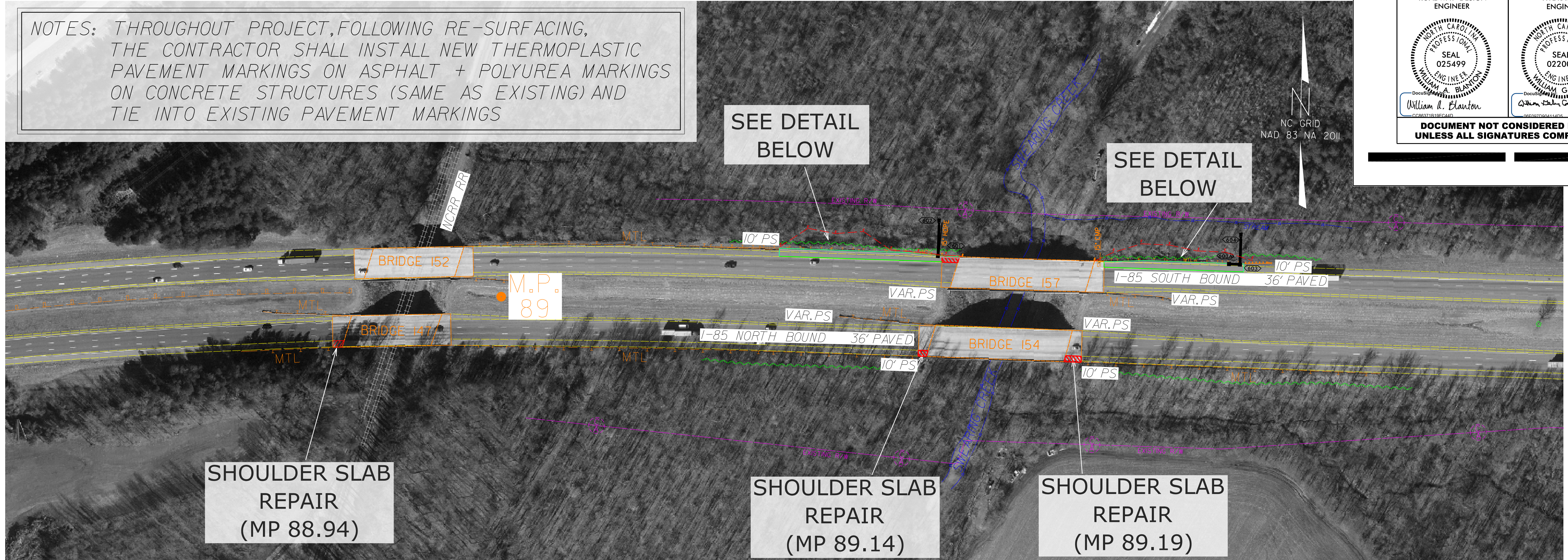


PROJECT REFERENCE NO. 1-5950	SHEET NO. 6
RW SHEET NO.	
ROADWAY DESIGN ENGINEER	HYDRAULICS ENGINEER
DOCUMENT NOT CONSIDERED FINAL UNLESS ALL SIGNATURES COMPLETED	

NOTES: THROUGHOUT PROJECT, FOLLOWING RE-SURFACING, THE CONTRACTOR SHALL INSTALL NEW THERMOPLASTIC PAVEMENT MARKINGS ON ASPHALT + POLYUREA MARKINGS ON CONCRETE STRUCTURES (SAME AS EXISTING) AND TIE INTO EXISTING PAVEMENT MARKINGS



DETAIL OF SHOULDER BERM GUTTER AREA

NOTE: SEE SHEET X-1 TO X-5 FOR CROSS SECTIONS

REVISIONS

06-JUL-2022 14:12 S:\Project\Development\1-5950-1\1-5950-1\1-5950-1\1-5950-1.dwg