

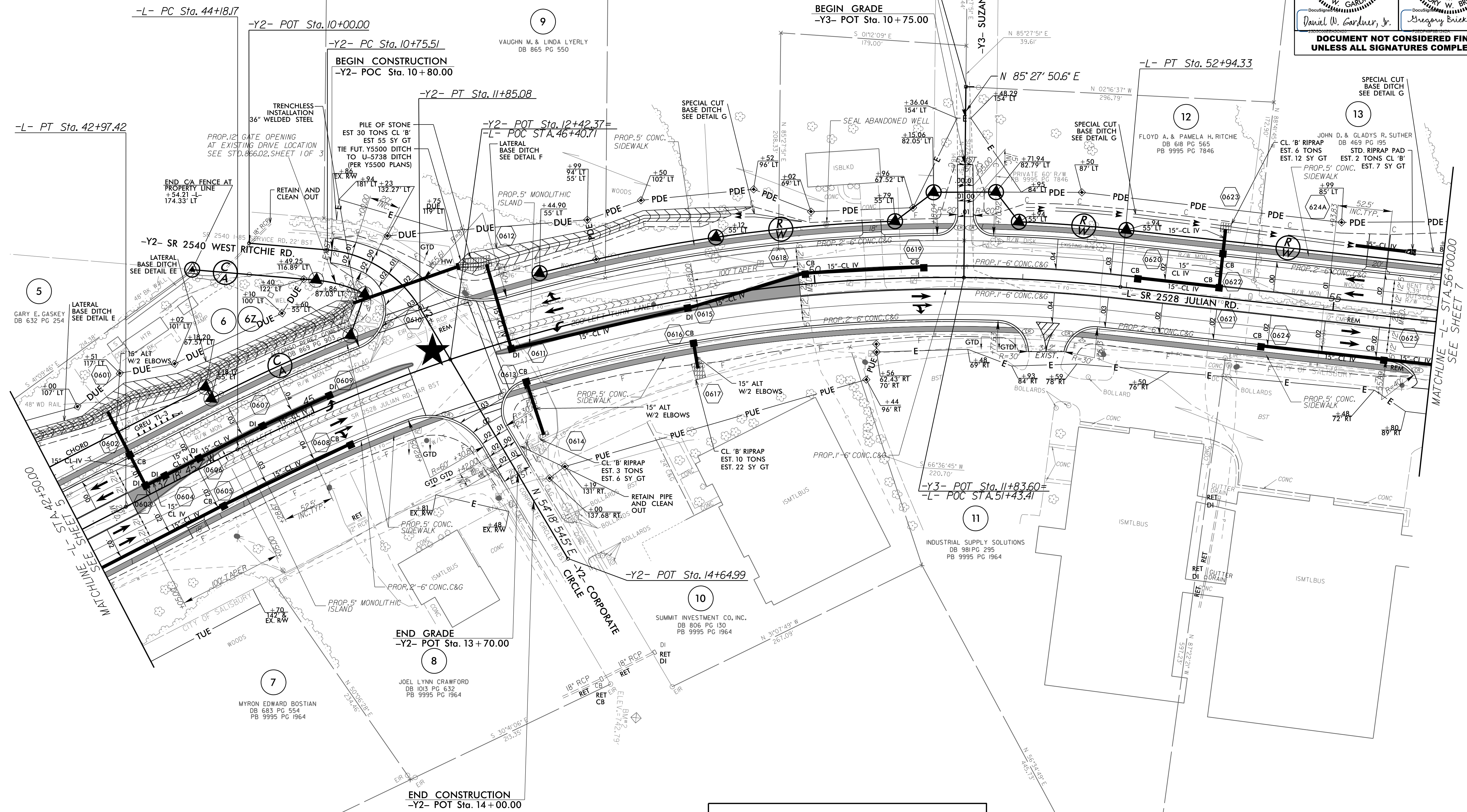
NAD 83 NA 2011

-L-
PI Sta 48+69.14
Δ = 33° 28' 00.8" (RT)
D = 3' 49' 11.0"
L = 876.16'
T = 450.98'
R = 1,500.00'
SE = SEE PLANS

-Y2-
PI Sta 11+34.85
Δ = 54° 35' 25.0" (RT)
D = 49' 49' 20.7"
L = 109.57'
T = 59.34'
R = 115.00'
SE = SEE PLANS

-Y3- POT Sta. 10+00.00
BEGIN CONSTRUCTION
-Y3- POT Sta. 10+30.00

BEGIN GRADE
-Y3- POT Sta. 10+75.00



REVISIONS

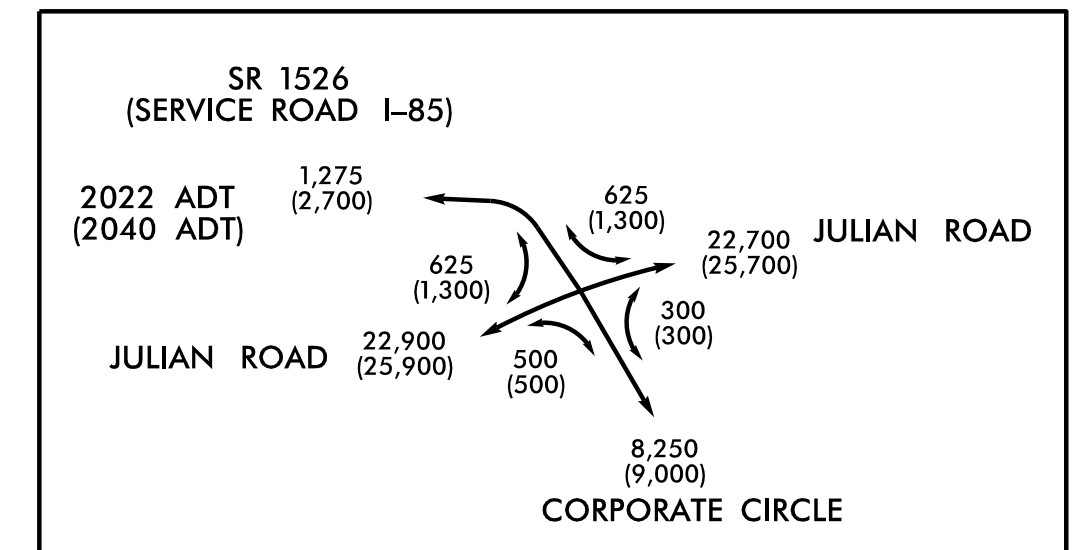


PROPOSED TRAFFIC SIGNAL

CURB & GUTTER PAN CROSS SLOPE TO MATCH ROADWAY CROSS SLOPE:
-L- STA 44+81.2 LT TO STA 53+62.6 LT

NOTE:
PIPES LABELED TO BE REMOVED MAY BE FILLED W/ FLOWABLE FILL AND ABANDONED AT THE NCDOT FIELD ENGINEER'S DISCRETION.

NOTE:
IN SYSTEMS TO BE PLUGGED AND FILLED W/ FLOWABLE FILL, REMOVE STRUCTURES. ALTERNATELY, REMOVE TOPS OF STRUCTURES TO ELEV. OF BOTTOM OF AGGREGATE ROADWAY BASE, AND FILL W/ COMPACTED ABC OR FLOWABLE FILL AT NCDOT FIELD ENGINEER'S DISCRETION.



SEE SHEET 11 FOR -L- PROFILE
SEE SHEET 13 FOR -Y2- PROFILE
SEE SHEET 13 FOR -Y3- PROFILE
SEE SHEET 2D-1 FOR DRAINAGE DITCH DETAILS

8/17/19

11/19/2021 U-5738_Rd_6.dgn