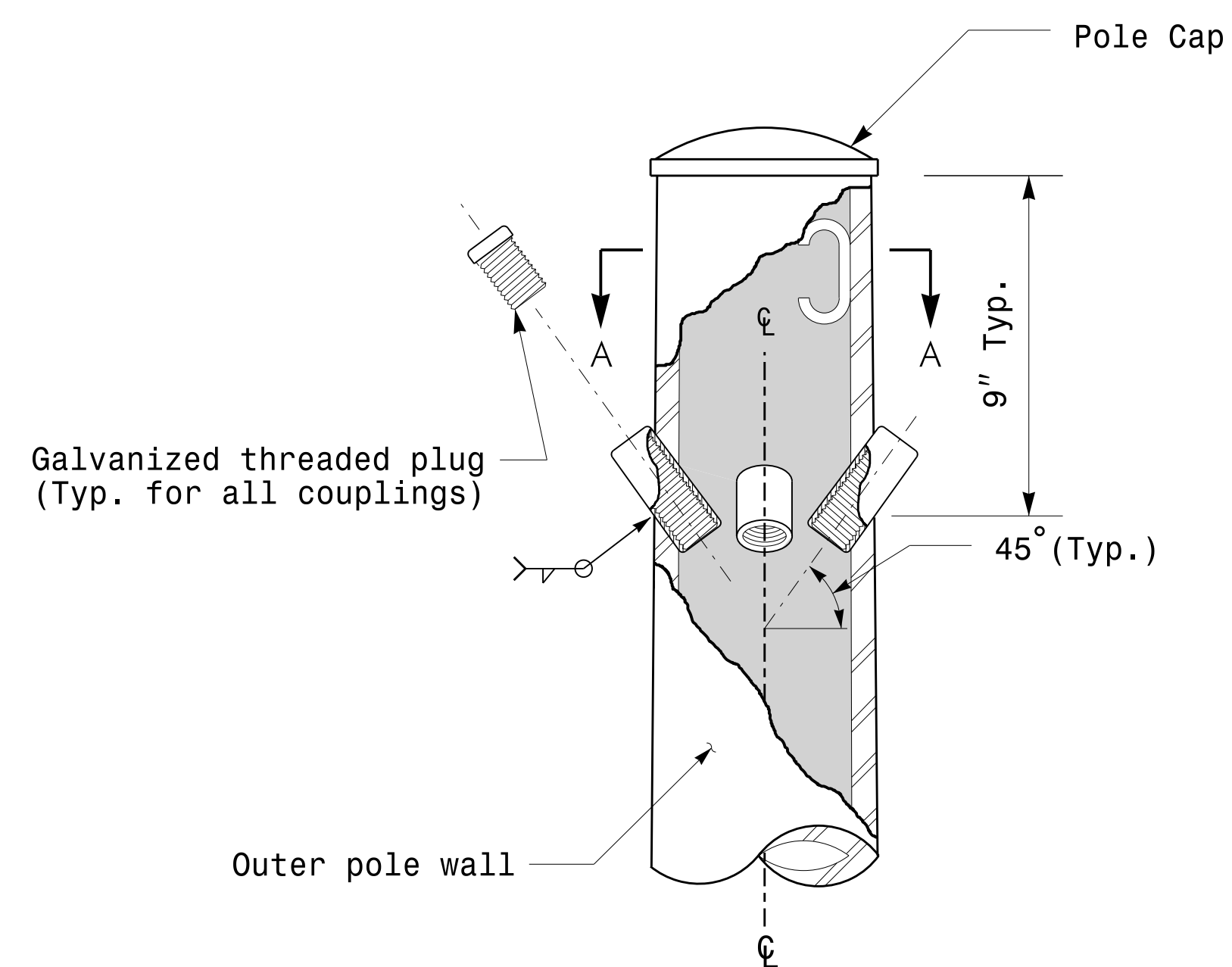
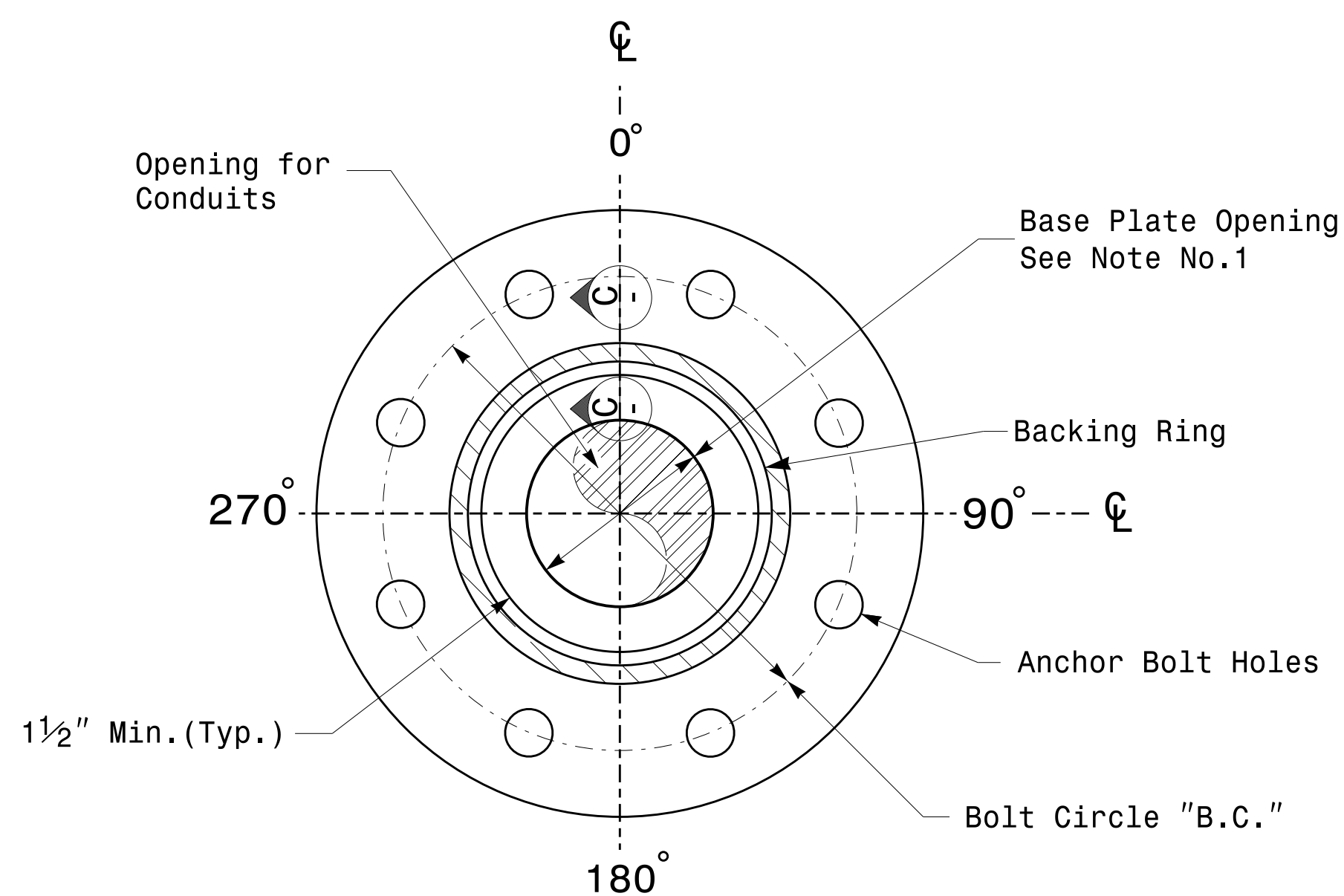


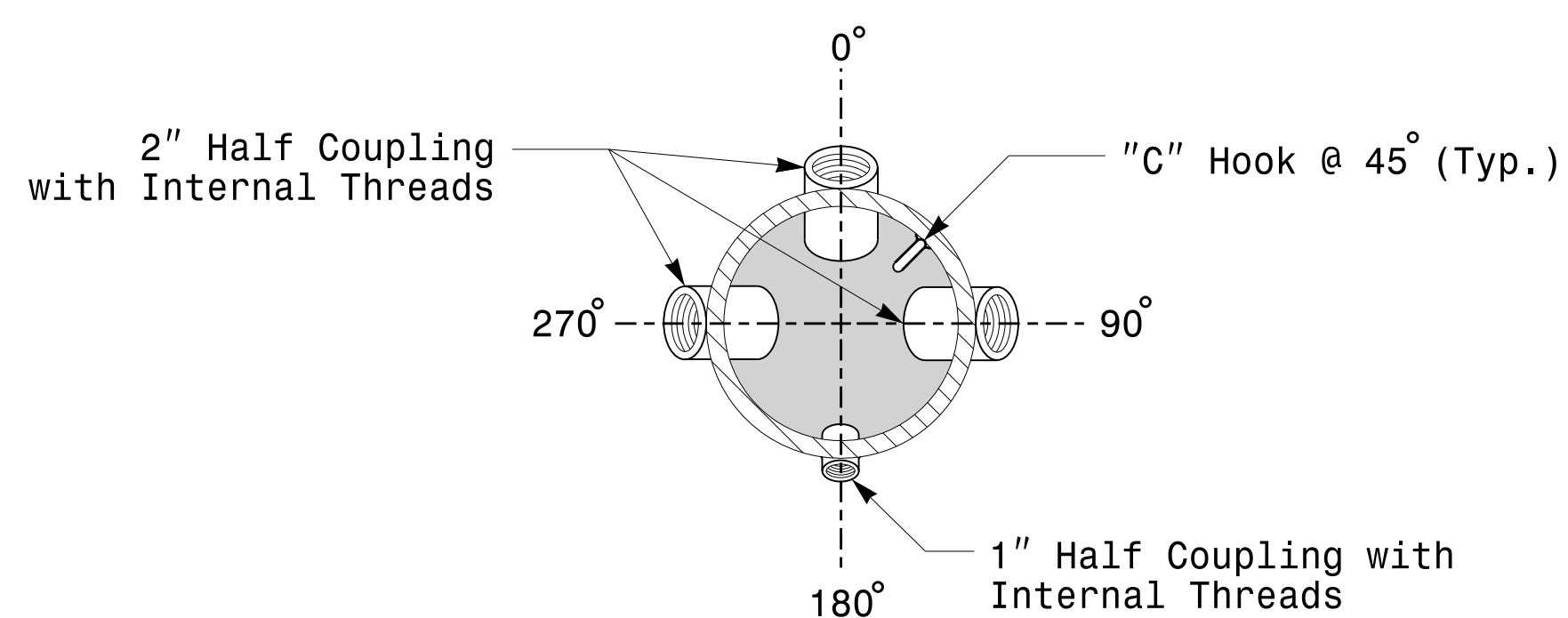
Note:
 1. Opening in pole base plate shall be equal to pole base inside diameter minus 3 1/2" but shall not be less than 8 1/2".



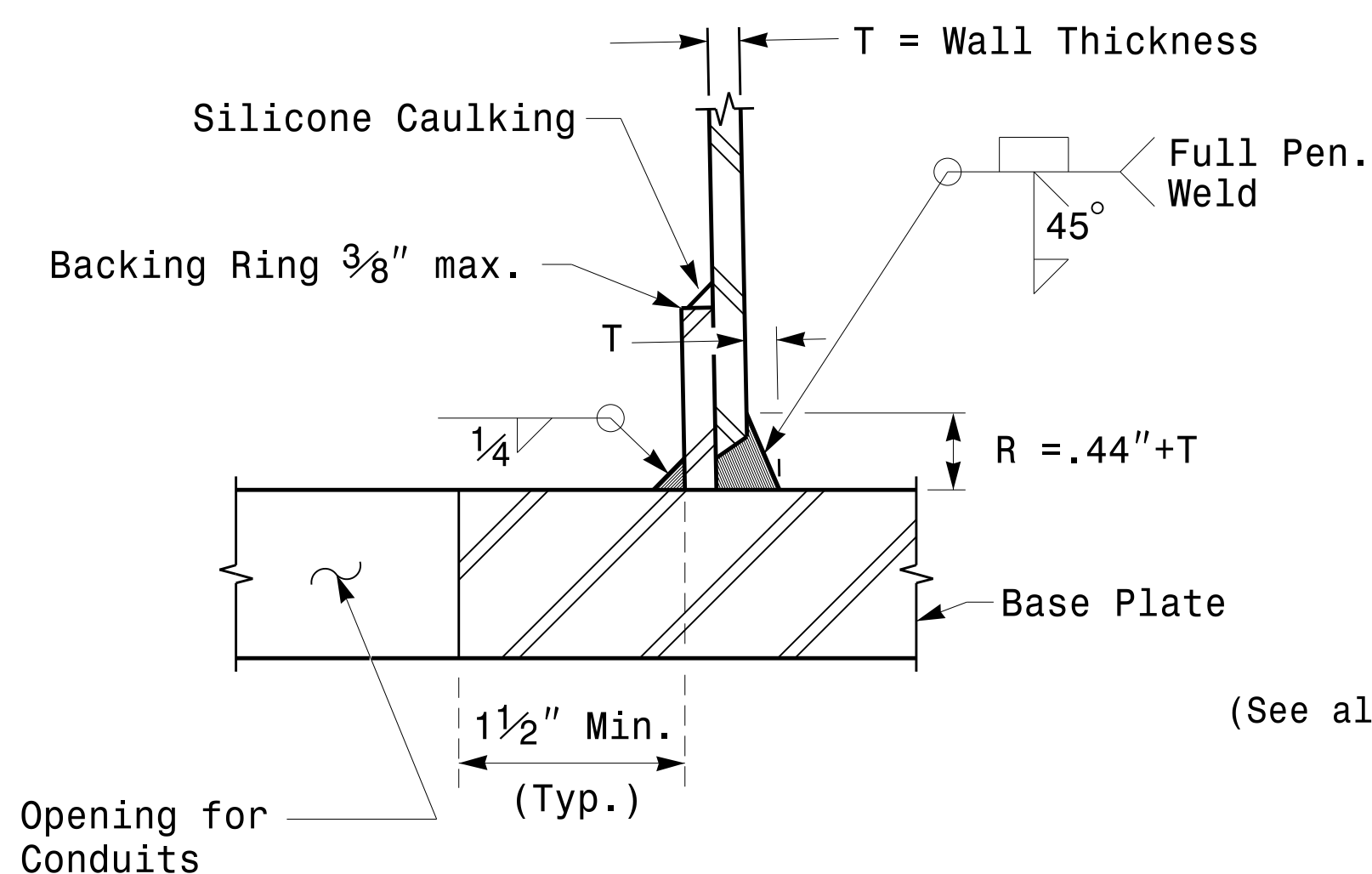
Cable Entrances at Top of Pole



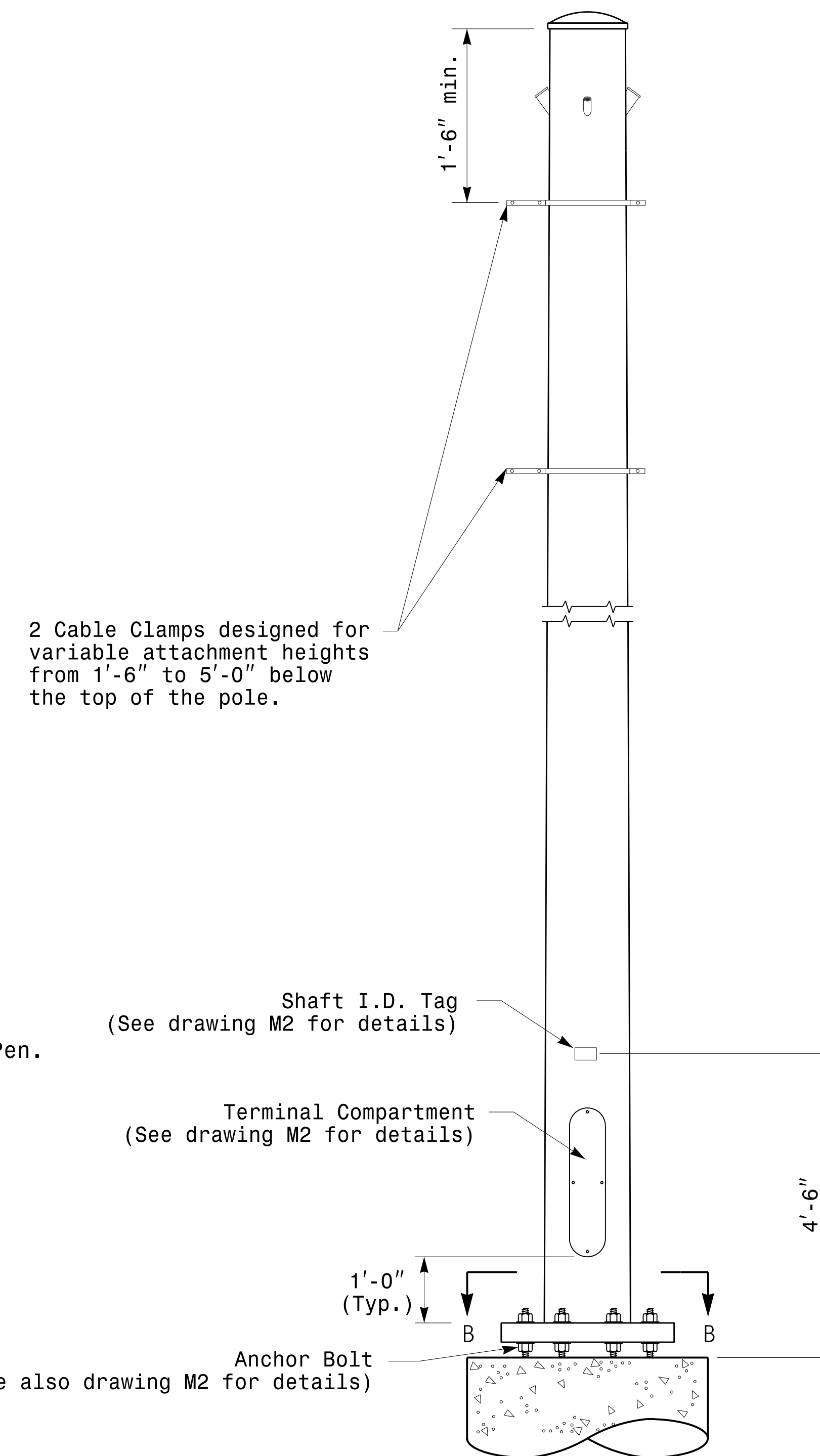
Section B-B
 Pole Base Plate Details
 (8 and 12 Bolt Pattern)



Section A-A
 Radial Orientation for Factory Installed
 Accessories at Top of Pole



Section C-C
 (Pole Attachment to Base Plate)
 Full-Penetration
 Groove Weld Detail



Monotube Strain Pole

Prepared in the Offices of:

 750 N. Greenfield Pkwy, Garner, NC 27529

SCALE: NONE

Typical Fabrication Details For Strain Poles

PLAN DATE: OCTOBER 2017	DESIGNED BY: K.C. DURIGON
PREPARED BY: N. BITTING	REVIEWED BY: D.C. SARKAR
REVISIONS	INIT. DATE

SEAL

DocuSigned by:
 Debesh C. Sarkar
 44EBE7816FA4F49E

10/11/2017
 DATE

Fabrication Details – Strain Poles

11-0CT-2017-08:25 136504115 Signal&Sigs Design Section Eastern Region\m3 Sheets\2016\2014 Sig.M3 Std. Fabrication Details-Strain Poles.dgn