



RELEASE FOR CONSTRUCTION DATE: _____

NAD 83 NA 2011

Excavate and Build Proposed Ditch according to Detail H on Roadway Plans from Sta. 56+50 to Sta. 60+25 LT DO NOT INSTALL PERM LINING DURING C&G. Stabilize with TEMP Matting during C&G

Excavate and Build Proposed Ditch according to Detail H on Roadway Plans from Sta. 60+25 to Sta. 67+50 LT DO NOT INSTALL PERM LINING DURING C&G. Stabilize with TEMP Matting during C&G

Excavate and Build Proposed Ditch according to Detail L on Roadway Plans from Sta. 67+50 to Sta. 68+25 LT DO NOT INSTALL PERM LINING DURING C&G. Stabilize with TEMP Matting during C&G

-L-
PI Sta 62+28.38
Δ = 8°45'23.2" (LT)
D = 1'44'10.4"
L = 504.33'
T = 252.66'
R = 3,300.00'
SE = SEE PLANS

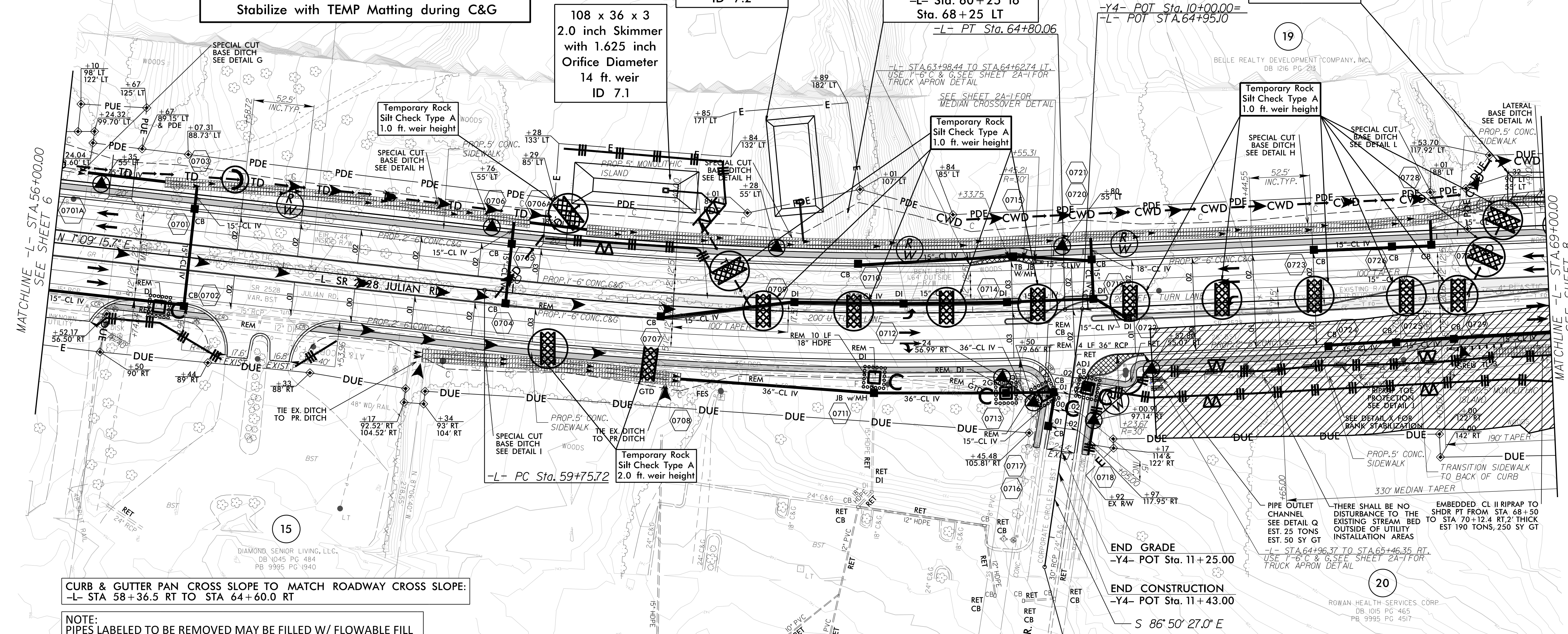
ENVIRONMENTALLY SENSITIVE AREA
SEE PROJECT SPECIAL PROVISIONS

84 x 42 x 3
2.0 inch Skimmer
with 1.625 inch Orifice Diameter
13 ft. weir
ID 7.2

108 x 36 x 3
2.0 inch Skimmer
with 1.625 inch Orifice Diameter
14 ft. weir
ID 7.1

Place Matting for Erosion Control on all ditch cut slopes as Work Allows.
-L- Sta. 60+25 to Sta. 68+25 LT
-L- PT Sta. 64+80.06

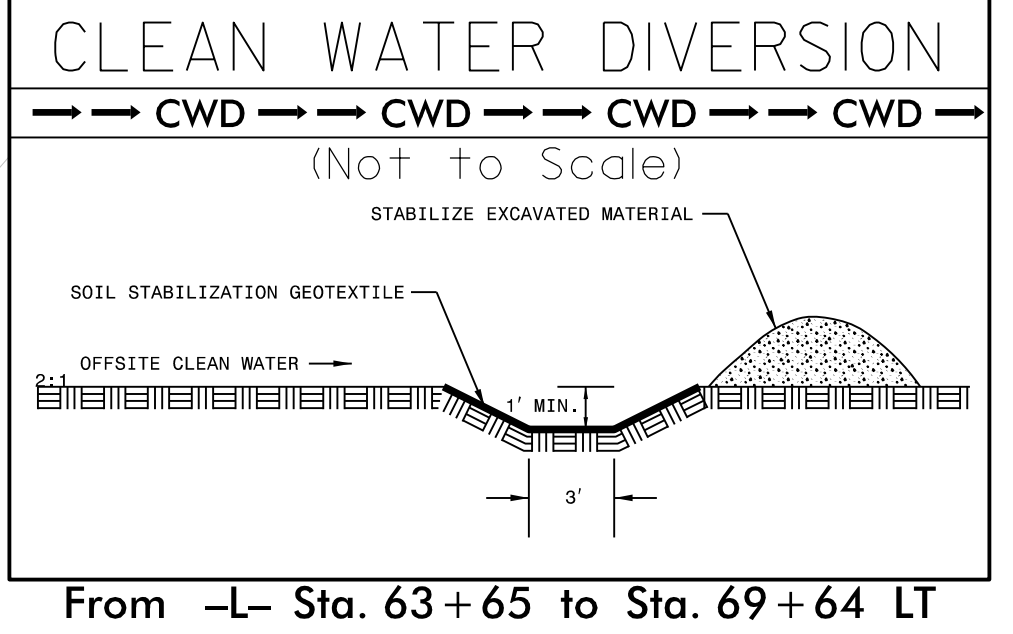
150 x 26 x 3
2.0 inch Skimmer
with 1.625 inch Orifice Diameter
15 ft. weir
ID 8.1



CURB & GUTTER PAN CROSS SLOPE TO MATCH ROADWAY CROSS SLOPE:
-L- STA 58+36.5 RT TO STA 64+60.0 RT

NOTE:
PIPES LABELED TO BE REMOVED MAY BE FILLED W/ FLOWABLE FILL AND ABANDONED AT THE NCDOT FIELD ENGINEER'S DISCRETION.

NOTE:
IN SYSTEMS TO BE PLUGGED AND FILLED W/ FLOWABLE FILL, REMOVE STRUCTURES. ALTERNATELY, REMOVE TOPS OF STRUCTURES TO ELEV. OF BOTTOM OF AGGREGATE ROADWAY BASE, AND FILL W/ COMPACTED ABC OR FLOWABLE FILL AT NCDOT FIELD ENGINEER'S DISCRETION.

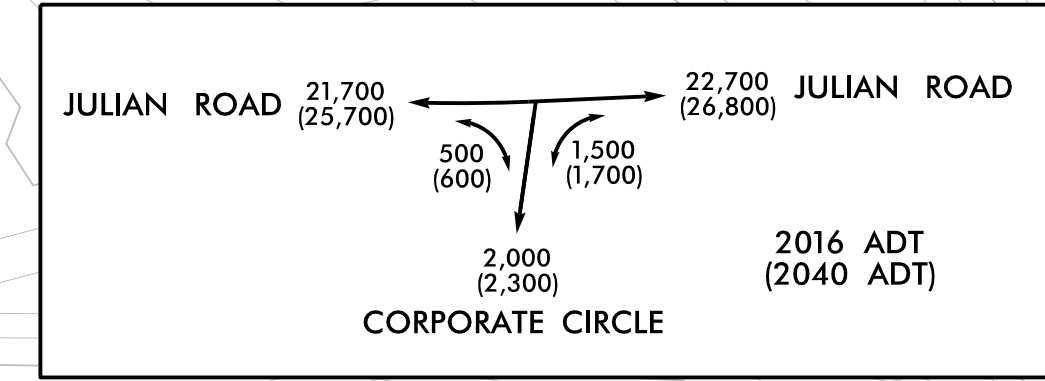


From -L- Sta. 63+65 to Sta. 69+64 LT

Excavate and Build Proposed Ditch according to Detail I on Roadway Plans from Sta. 59+28 to Sta. 61+50 RT and Tie Into Existing 36" RCP during C&G

Tie Offsite Ditch at Sta. 61+36 Into Proposed Detail I Ditch during C&G

FOR EXISTING DRAINAGE STRUCTURES ADJACENT TO ACTIVE TRAVEL WAYS, UTILIZE FABRIC INSERT INLET PROTECTION DEVICES IN LIEU OF ROCK INLET SEDIMENT TRAP - TYPE C SHOWN ON PLANS



TRUCK MOUNTED APRON

SEE SHEET 12 FOR -L- PROFILE
SEE SHEET 14 FOR -Y4- PROFILE
SEE SHEET 2D-I FOR DRAINAGE DITCH DETAILS

REVISIONS

8/17/09

1/2/2017 171702620 U5738 Roadside CADD\PSH\U4738_Rdy_EC_07.dgn