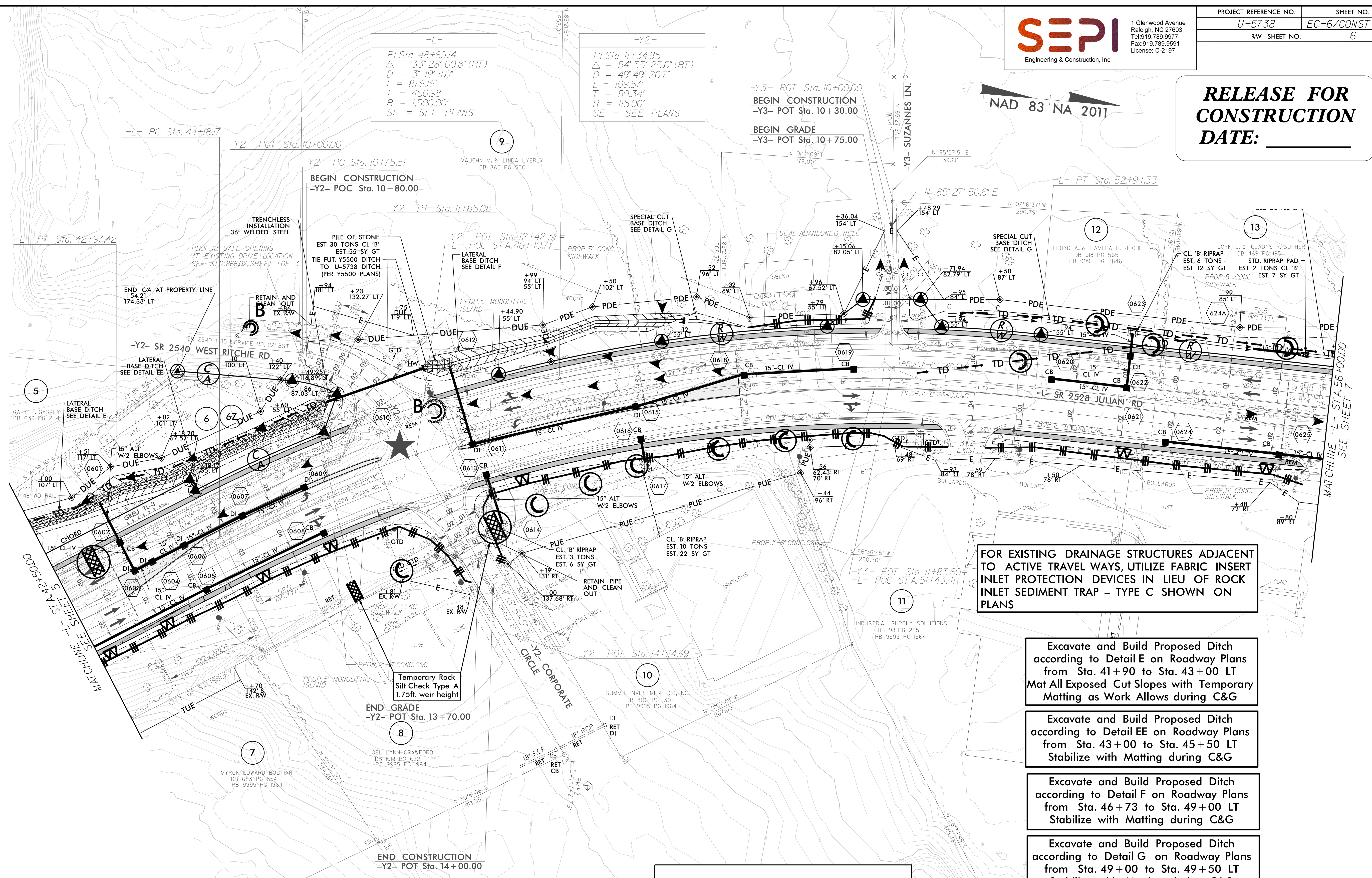


**RELEASE FOR CONSTRUCTION DATE:** \_\_\_\_\_

NAD 83 NA 2011

8/17/19

1/2/2021 171702620 U5738 Roadside CADD\PSH\U4738\_Rdy\_EC\_06.dgn  
 1/2/2021 171702620 U5738 Roadside CADD\PSH\U4738\_Rdy\_EC\_06.dgn  
 1/2/2021 171702620 U5738 Roadside CADD\PSH\U4738\_Rdy\_EC\_06.dgn



**-L-**  
PI Sta 48+69.14  
Δ = 33° 28' 00.8" (RT)  
D = 3' 49' 11.0"  
L = 876.16'  
T = 450.98'  
R = 1,500.00'  
SE = SEE PLANS

**-Y2-**  
PI Sta 11+34.85  
Δ = 54° 35' 25.0" (RT)  
D = 49' 49' 20.7"  
L = 109.57'  
T = 59.34'  
R = 115.00'  
SE = SEE PLANS

**-Y3-** POT Sta. 10+00.00  
BEGIN CONSTRUCTION  
-Y3- POT Sta. 10+30.00  
  
BEGIN GRADE  
-Y3- POT Sta. 10+75.00

BEGIN CONSTRUCTION  
-Y2- POC Sta. 10+80.00

-Y2- PT Sta. 11+85.08

-Y2- POT Sta. 12+42.37

FOR EXISTING DRAINAGE STRUCTURES ADJACENT TO ACTIVE TRAVEL WAYS, UTILIZE FABRIC INSERT INLET PROTECTION DEVICES IN LIEU OF ROCK INLET SEDIMENT TRAP - TYPE C SHOWN ON PLANS

Excavate and Build Proposed Ditch according to Detail E on Roadway Plans from Sta. 41+90 to Sta. 43+00 LT Mat All Exposed Cut Slopes with Temporary Matting as Work Allows during C&G

Excavate and Build Proposed Ditch according to Detail EE on Roadway Plans from Sta. 43+00 to Sta. 45+50 LT Stabilize with Matting during C&G

Excavate and Build Proposed Ditch according to Detail F on Roadway Plans from Sta. 46+73 to Sta. 49+00 LT Stabilize with Matting during C&G

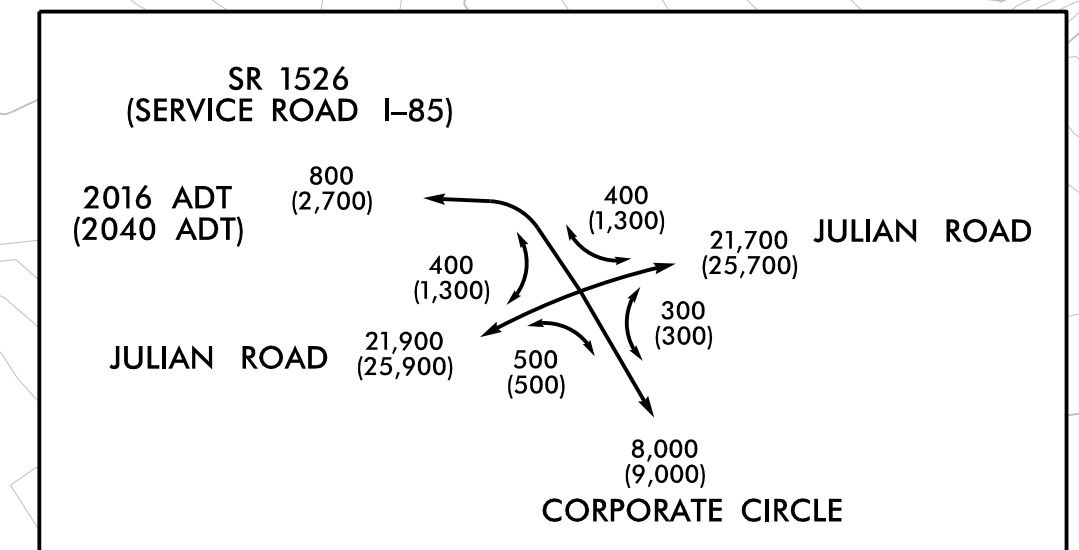
Excavate and Build Proposed Ditch according to Detail G on Roadway Plans from Sta. 49+00 to Sta. 49+50 LT Stabilize with Matting during C&G

Excavate and Build Proposed Ditch according to Detail G on Roadway Plans from Sta. 52+00 to Sta. 56+50 LT Stabilize with Matting during C&G

CURB & GUTTER PAN CROSS SLOPE TO MATCH ROADWAY CROSS SLOPE:  
-L- STA 44+81.2 LT TO STA 53+62.6 LT

NOTE:  
PIPES LABELED TO BE REMOVED MAY BE FILLED W/ FLOWABLE FILL AND ABANDONED AT THE NCDOT FIELD ENGINEER'S DISCRETION.

NOTE:  
IN SYSTEMS TO BE PLUGGED AND FILLED W/ FLOWABLE FILL, REMOVE STRUCTURES. ALTERNATELY, REMOVE TOPS OF STRUCTURES TO ELEV. OF BOTTOM OF AGGREGATE ROADWAY BASE, AND FILL W/ COMPACTED ABC OR FLOWABLE FILL AT NCDOT FIELD ENGINEER'S DISCRETION.



PROPOSED TRAFFIC SIGNAL

SEE SHEET 11 FOR -L- PROFILE  
SEE SHEET 13 FOR -Y2- PROFILE  
SEE SHEET 13 FOR -Y3- PROFILE  
SEE SHEET 2D-1 FOR DRAINAGE DITCH DETAILS