

**RELEASE FOR CONSTRUCTION DATE:** \_\_\_\_\_

-L-	-YI-	-YI-
PI Sta 34+64.45	PI Sta 41+53.11	PI Sta 10+96.51
$\Delta = 2' 12" 18.7" (LT)$	$\Delta = 2' 12" 18.7" (RT)$	$\Delta = 18' 36" 24.8" (RT)$
$D = 0' 45' 50.2"$	$D = 0' 45' 50.2"$	$D = 9' 43' 30.0"$
$L = 288.66'$	$L = 288.66'$	$L = 191.33'$
$T = 144.35'$	$T = 144.35'$	$T = 96.51'$
$R = 7,500.00'$	$R = 7,500.00'$	$R = 589.16'$
SE = SEE PLANS	SE = SEE PLANS	SE = SEE PLANS

 ENVIRONMENTALLY SENSITIVE AREA  
SEE PROJECT SPECIAL PROVISIONS

Excavate and Build Proposed Ditch according to Detail D on Roadway Plans from Sta. 34+00 to Sta. 38+90 LT Stabilize with Matting during C&G

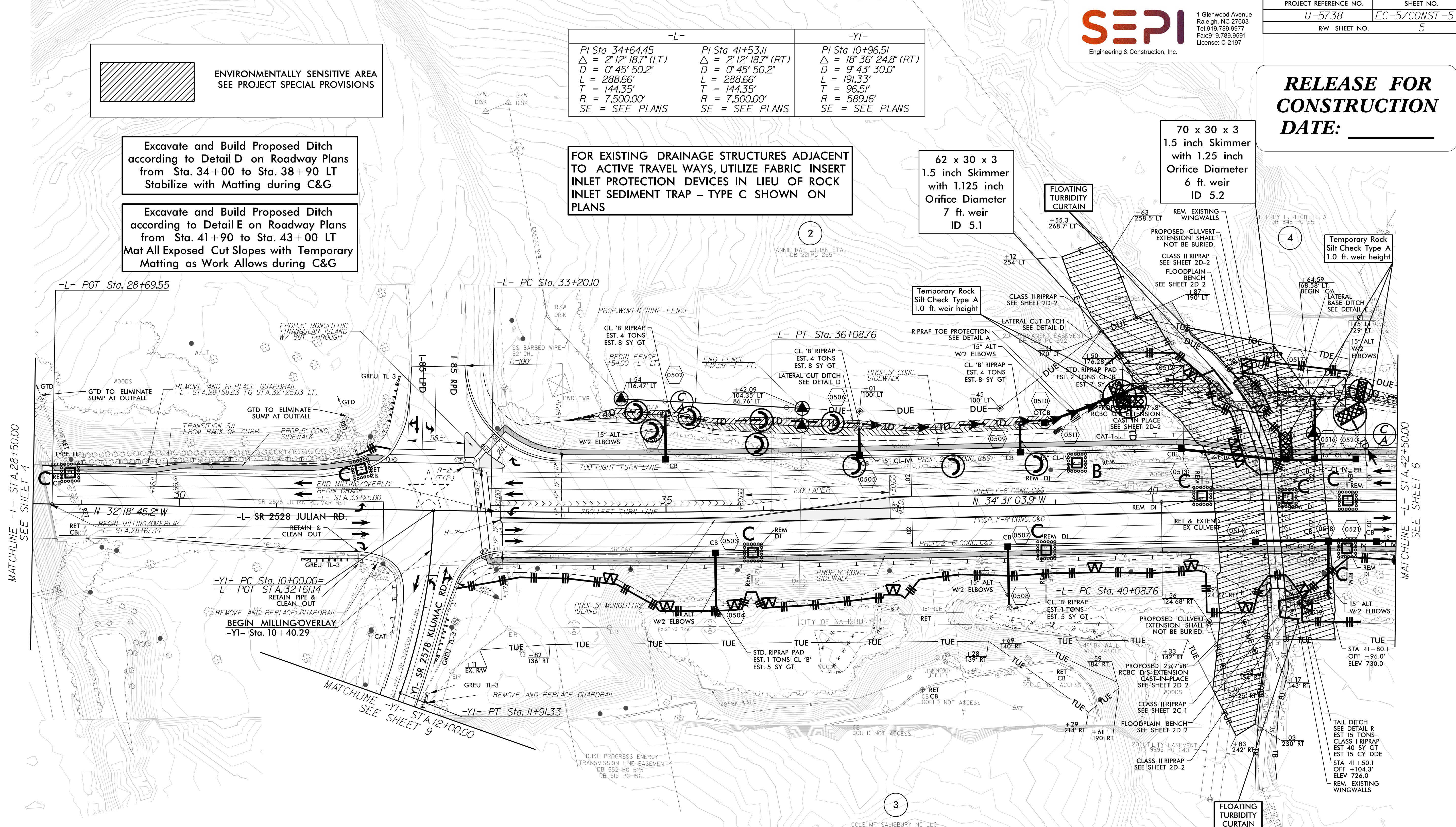
Excavate and Build Proposed Ditch according to Detail E on Roadway Plans from Sta. 41+90 to Sta. 43+00 LT Mat All Exposed Cut Slopes with Temporary Matting as Work Allows during C&G

FOR EXISTING DRAINAGE STRUCTURES ADJACENT TO ACTIVE TRAVEL WAYS, UTILIZE FABRIC INSERT INLET PROTECTION DEVICES IN LIEU OF ROCK INLET SEDIMENT TRAP - TYPE C SHOWN ON PLANS

62 x 30 x 3  
1.5 inch Skimmer  
with 1.125 inch Orifice Diameter  
7 ft. weir  
ID 5.1

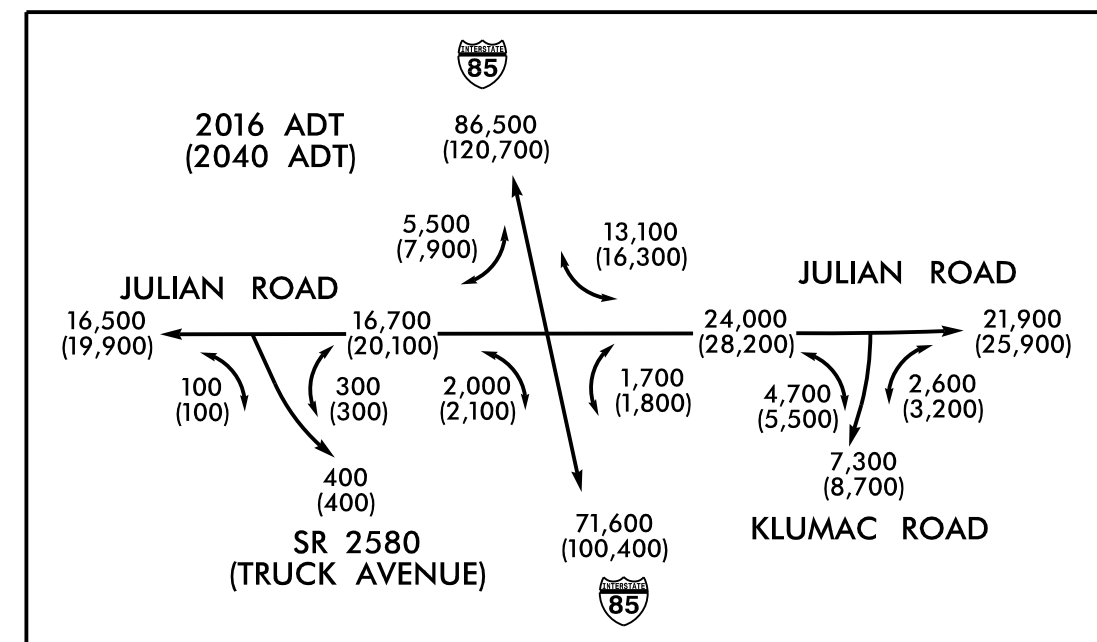
70 x 30 x 3  
1.5 inch Skimmer  
with 1.25 inch Orifice Diameter  
6 ft. weir  
ID 5.2

Temporary Rock Silt Check Type A  
1.0 ft. weir height



MATCHLINE -L- STA. 28+50.00  
SEE SHEET 4

MATCHLINE -L- STA. 42+50.00  
SEE SHEET 6



NOTE:  
PIPES LABELED TO BE REMOVED MAY BE FILLED W/ FLOWABLE FILL AND ABANDONED AT THE NCDOT FIELD ENGINEER'S DISCRETION.

NOTE:  
IN SYSTEMS TO BE PLUGGED AND FILLED W/ FLOWABLE FILL, REMOVE STRUCTURES. ALTERNATELY, REMOVE TOPS OF STRUCTURES TO ELEV. OF BOTTOM OF AGGREGATE ROADWAY BASE, AND FILL W/ COMPACTED ABC OR FLOWABLE FILL AT NCDOT FIELD ENGINEER'S DISCRETION.

 EXISTING TRAFFIC SIGNAL

SEE SHEET 11 FOR -L- PROFILE  
SEE SHEET 13 FOR -YI- PROFILE  
SEE SHEET 2D-1 FOR DRAINAGE DITCH DETAILS  
SEE SHEET 2D-2 FOR CULVERT DETAILS  
SEE SHEETS C-1 THRU C-?? FOR CULVERT PLANS

REVISIONS

8/17/99

1/2/2017 171026220 U5738 Roadside CADD\PSH\JH738\_RdJ\_EC\_05.dgn