

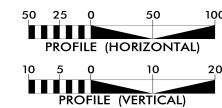
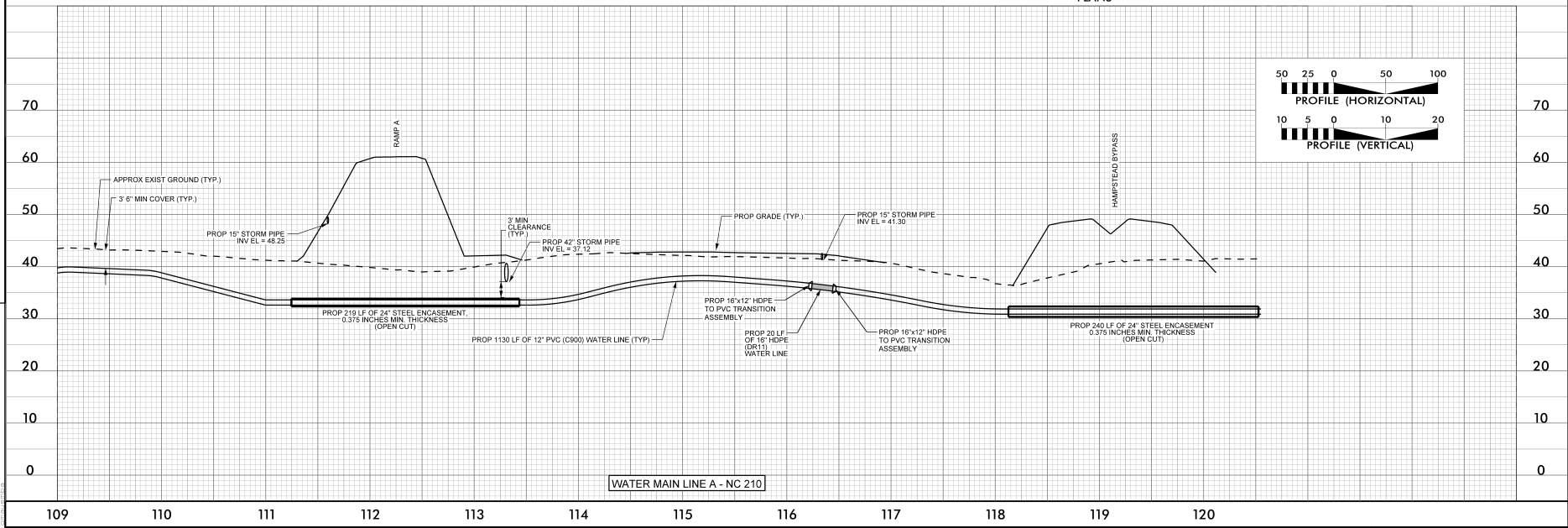
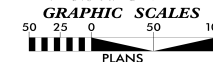
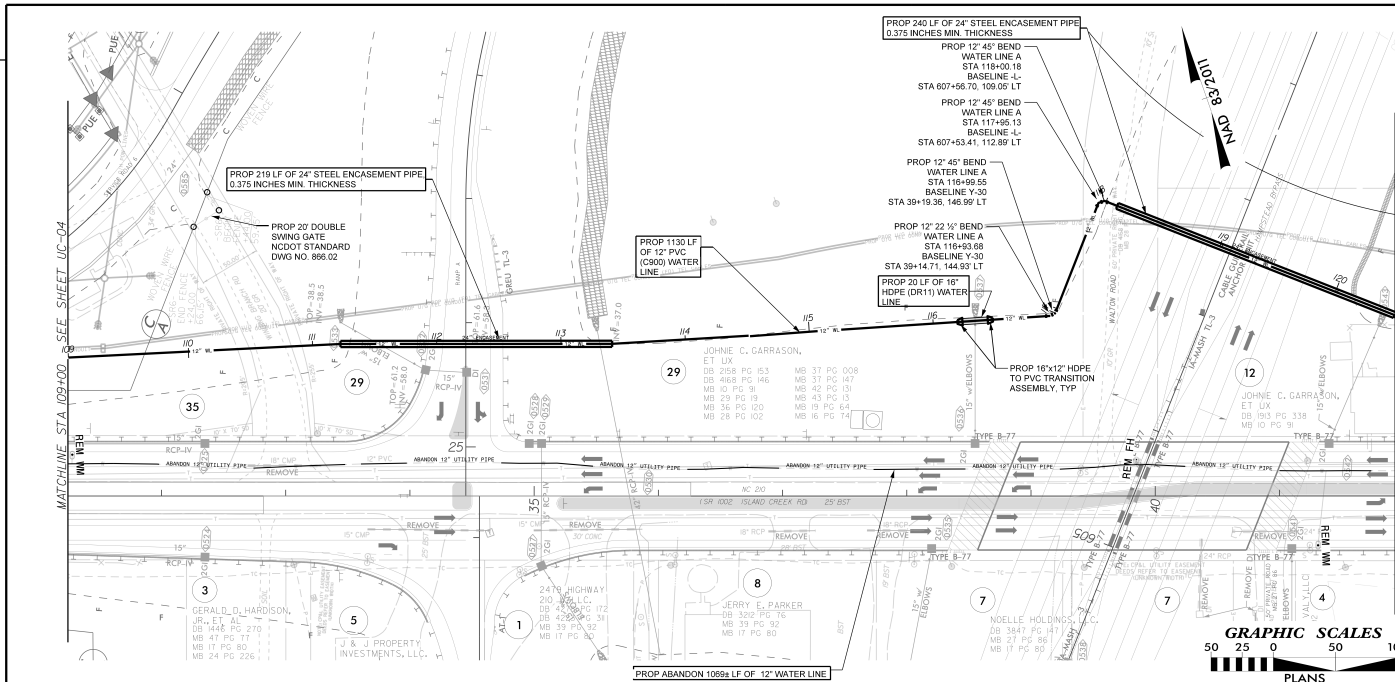
<p>Stantec Consulting Services Inc. 801 Jones Franklin Road Suite 300 Raleigh, NC 27606 Tel. (919) 851-6866 Fax. (919) 851-7024 www.stantec.com License No. F-0672</p>	PROJECT REFERENCE NO.	UC-05
	DESIGNED BY: RGR	UC-05
	DRAWN BY: RGR	
	CHECKED BY: LLP	
	APPROVED BY:	
REVISED:		
UTILITIES ENGINEERING SEC.	UTILITY CONSTRUCTION PLANS ONLY	
PHONE: (919) 707-6690	FAX: (919) 250-4151	
DOCUMENT NOT CONSIDERED FINAL UNLESS ALL SIGNATURES COMPLETED		

UTILITY CONSTRUCTION

PROP 20 LF 16" HDPE (DR11) WATER LINE
 PROP 130 LF OF 12" PVC (C900) WATER LINE
 PROP ABANDON 1089 LF OF 12" WATER LINE

THE ESTIMATED QUANTITY OF DUCTILE IRON WATER PIPE FITTINGS ON THIS PLAN SHEET IS 865 POUNDS. THE ACTUAL QUANTITY AND TYPE OF FITTINGS WILL VARY BASED ON FIELD CONDITIONS.

- NOTES:
1. MAINTAIN MINIMUM 36" COVER BELOW FINISHED GRADE FOR PIPELINES 8" AND SMALLER IN DIAMETER. MAINTAIN MINIMUM 42" COVER BELOW FINISHED GRADE FOR PIPES 10" AND LARGER IN DIAMETER AND GREATER DEPTHS OF COVER AS SHOWN ON PLANS.
 2. PROVIDE 36" MINIMUM VERTICAL CLEARANCE WHERE PROPOSED WATER CROSSES DRAINAGE SYSTEM.
 3. RELOCATE ACTIVE WATER METERS AS SHOWN ON DRAWING AND CONNECT TO NEW WATER MAIN.
 4. ABANDON WATER LINE IN LOCATIONS SHOWN. INCLUDES FITTINGS AND APPURTENANCES. ABANDONMENT OF THE WATER LINE TO BE IN ACCORDANCE WITH UTILITY OWNER'S REQUIREMENTS.
 5. ALL HDPE PIPE IS 16 INCH OUTSIDE DIAMETER AND 12.9 INCH INSIDE DIAMETER.



REVISIONS

03/15/2018 ena.Engineering\UC\Proj\033008\UC-05.dgn

Stantec
 Stantec Consulting Services Inc.
 801 Jones Franklin Road
 Suite 300
 Raleigh, NC 27606
 Tel. (919) 851-6866
 Fax. (919) 851-7024
 www.stantec.com
 License No. F-0672

PROJECT REFERENCE NO.	R-3300B	SHEET NO.	UC-06
DESIGNED BY:	RGR		
DRAWN BY:	RGR		
CHECKED BY:	LLP		
APPROVED BY:			
REVISED:			
NORTH CAROLINA DEPARTMENT OF TRANSPORTATION UTILITIES ENGINEERING SECTION PHONE: (919) 707-6590 FAX: (919) 250-4151		UTILITY CONSTRUCTION PLANS ONLY	

DOCUMENT NOT CONSIDERED FINAL UNLESS ALL SIGNATURES COMPLETED

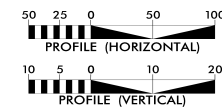
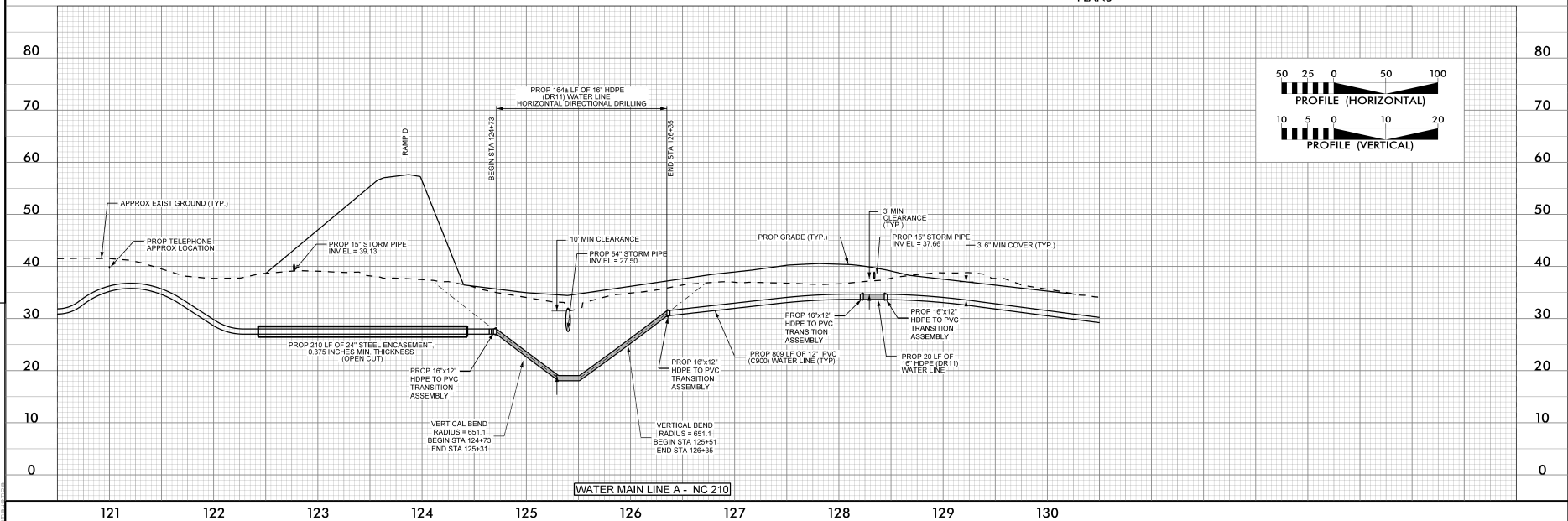
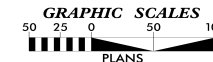
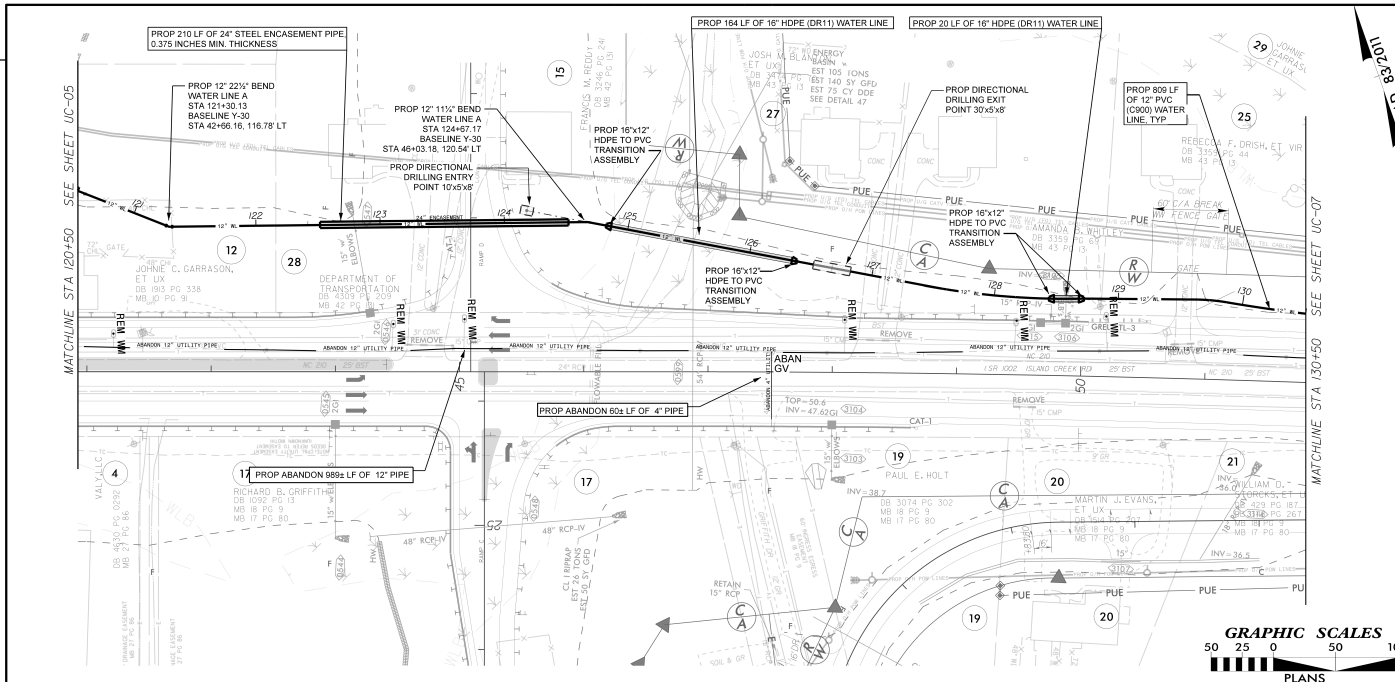
UTILITY CONSTRUCTION

PROP 184 LF OF HDPE 16" (DR11) WATER LINE
 PROP 809 LF OF PVC 12" (C900) WATER LINE
 PROP ABANDON 989 LF OF 12" WATER LINE
 PROP ABANDON 80 LF OF 4" WATER LINE
 THE ESTIMATED QUANTITY OF DUCTILE IRON WATER PIPE FITTINGS ON THIS PLAN SHEET IS 440 POUNDS. THE ACTUAL QUANTITY AND TYPE OF FITTINGS WILL VARY BASED ON FIELD CONDITIONS.

NOTES

1. MAINTAIN MINIMUM 36" COVER BELOW FINISHED GRADE FOR PIPELINES 8" AND SMALLER IN DIAMETER. MAINTAIN MINIMUM 42" COVER BELOW FINISHED GRADE FOR PIPES 10" AND LARGER IN DIAMETER AND GREATER DEPTHS OF COVER AS SHOWN ON PLANS.
2. PROVIDE 36" MINIMUM VERTICAL CLEARANCE WHERE PROPOSED WATER CROSSES DRAINAGE SYSTEM.
3. RELOCATE ACTIVE WATER METERS AS SHOWN ON DRAWING AND CONNECT TO NEW WATER MAIN.
4. ABANDON WATER LINE IN LOCATIONS SHOWN. INCLUDES FITTINGS AND APPURTENANCES. ABANDONMENT OF THE WATER LINE TO BE IN ACCORDANCE WITH UTILITY OWNER'S REQUIREMENTS.
5. ALL HDPE PIPE IS 16 INCH OUTSIDE DIAMETER AND 12.9 INCH INSIDE DIAMETER.

TRENCHLESS INSTALLATION NOTE:
 PRIOR TO COMMENCING ANY WORK ON ANY TRENCHLESS INSTALLATION ON THIS PROJECT, PROVIDE A DESIGN FOR THE TRENCHLESS INSTALLATION CERTIFIED BY AN ENGINEER LICENSED BY THE STATE OF NORTH CAROLINA, AS REQUIRED BY SUBARTICLE 1550-3(B) OF THE STANDARD SPECIFICATIONS.



REVISIONS

C:\Users\jg\OneDrive\Engineering\UC\Proj\R3300B\UC-06.dgn
 05/15/2018 10:51:00 AM
 jg