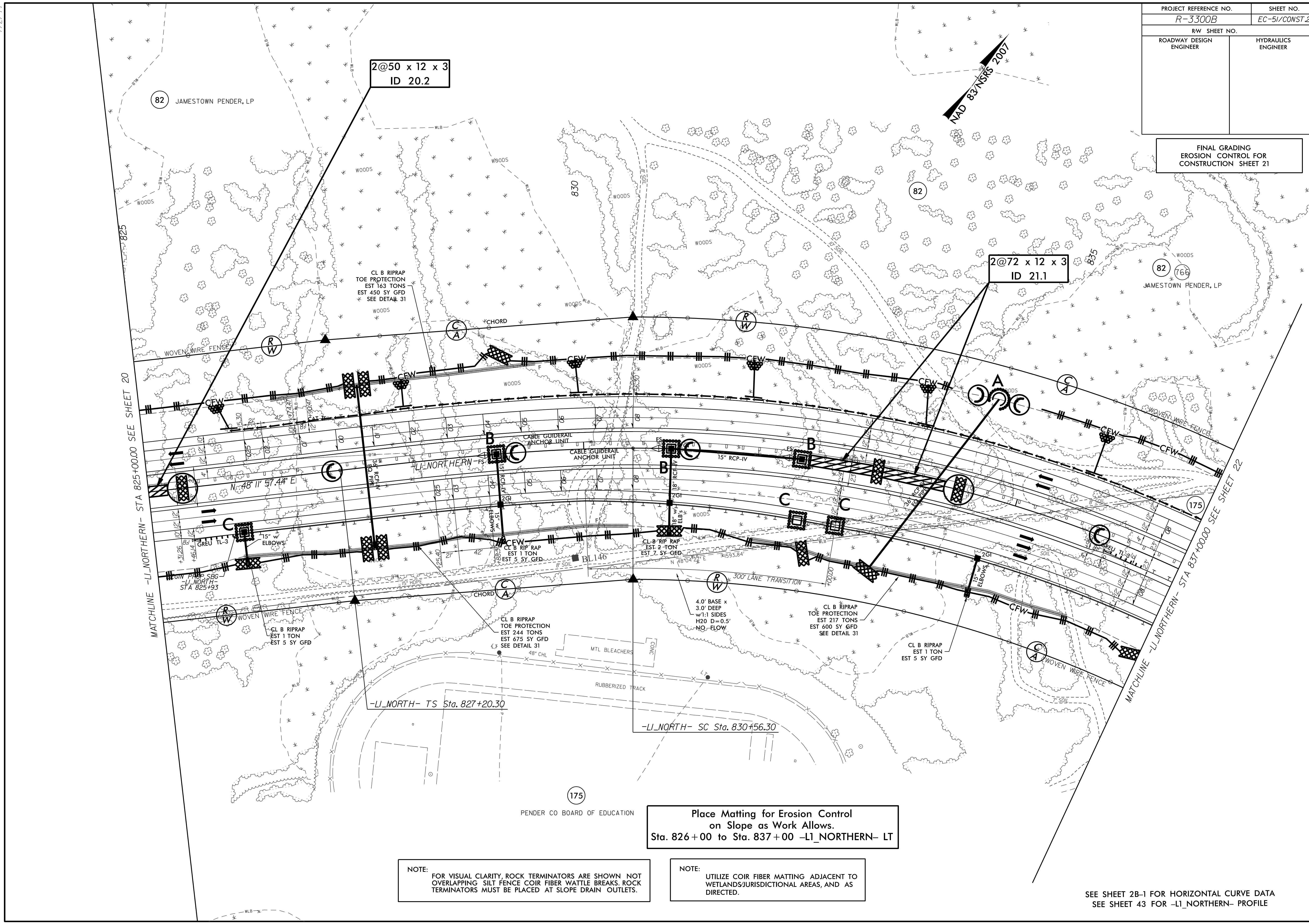


7/27/99

PROJECT REFERENCE NO. <i>R-3300B</i>	SHEET NO. <i>EC-51/CONST.21</i>
RW SHEET NO.	
ROADWAY DESIGN ENGINEER	HYDRAULICS ENGINEER

FINAL GRADING
EROSION CONTROL FOR
CONSTRUCTION SHEET 21



2@50 x 12 x 3
ID 20.2

2@72 x 12 x 3
ID 21.1

CL B RIPRAP
TOE PROTECTION
EST 163 TONS
EST 450 SY GFD
SEE DETAIL 31

CL B RIPRAP
EST 1 TON
EST 5 SY GFD

CL B RIPRAP
TOE PROTECTION
EST 244 TONS
EST 675 SY GFD
SEE DETAIL 31

4.0' BASE x
3.0' DEEP
w/1.1 SIDES
H2O D=0.5'
NO-FLOW

CL B RIPRAP
TOE PROTECTION
EST 217 TONS
EST 600 SY GFD
SEE DETAIL 31

CL B RIPRAP
EST 1 TON
EST 5 SY GFD

Place Matting for Erosion Control
on Slope as Work Allows.
Sta. 826+00 to Sta. 837+00 -L1_NORTHERN- LT

NOTE:
FOR VISUAL CLARITY, ROCK TERMINATORS ARE SHOWN NOT
OVERLAPPING SILT FENCE COIR FIBER WATTLE BREAKS. ROCK
TERMINATORS MUST BE PLACED AT SLOPE DRAIN OUTLETS.

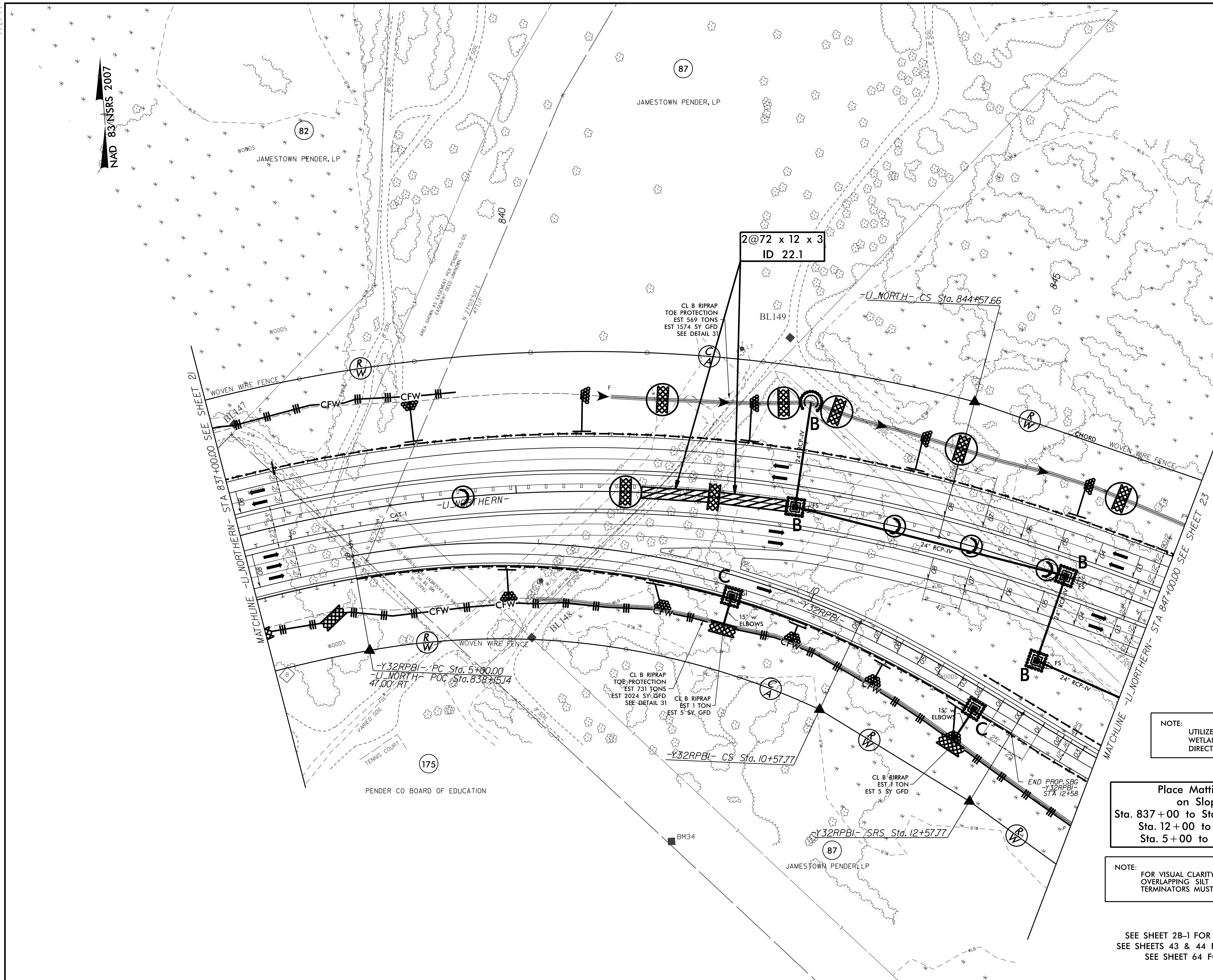
NOTE:
UTILIZE COIR FIBER MATTING ADJACENT TO
WETLANDS/JURISDICTIONAL AREAS, AND AS
DIRECTED.

SEE SHEET 2B-1 FOR HORIZONTAL CURVE DATA
SEE SHEET 43 FOR -L1_NORTHERN- PROFILE

7/22/99

PROJECT REFERENCE NO. <i>R-3300B</i>	SHEET NO. <i>EC-52/CONST.22</i>
RW SHEET NO.	
ROADWAY DESIGN ENGINEER	HYDRAULICS ENGINEER

FINAL GRADING
EROSION CONTROL FOR
CONSTRUCTION SHEET 22



NAD 83/NSRS 2007

MATCHLINE -L1 NORTHERN- STA 837+00.00 SEE SHEET 21

MATCHLINE -L1 NORTHERN- STA 847+00.00 SEE SHEET 23

NOTE:
UTILIZE COIR FIBER MATTING ADJACENT TO WETLANDS/JURISDICTIONAL AREAS, AND AS DIRECTED.

Place Matting for Erosion Control on Slope as Work Allows.
Sta. 837+00 to Sta. 847+00 -L1 NORTHERN- LT
Sta. 12+00 to Sta. 13+50 -Y32RPB1- LT
Sta. 5+00 to Sta. 13+50 -Y32RPB1- RT

NOTE:
FOR VISUAL CLARITY, ROCK TERMINATORS ARE SHOWN NOT OVERLAPPING SILT FENCE COIR FIBER WATTLE BREAKS. ROCK TERMINATORS MUST BE PLACED AT SLOPE DRAIN OUTLETS.

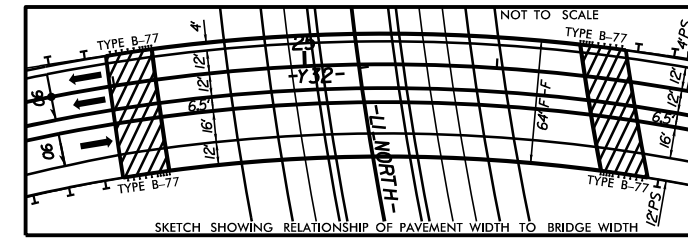
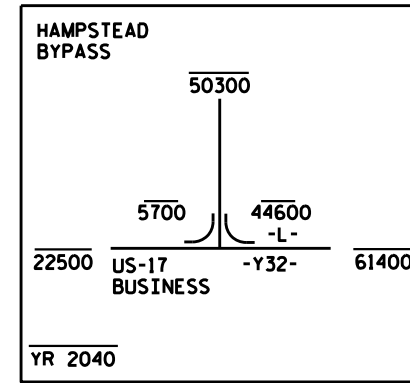
SEE SHEET 2B-1 FOR HORIZONTAL CURVE DATA
SEE SHEETS 43 & 44 FOR -L1 NORTHERN- PROFILE
SEE SHEET 64 FOR -Y32RPB1- PROFILE

PENDER CO BOARD OF EDUCATION

JAMESTOWN PENDER, LP

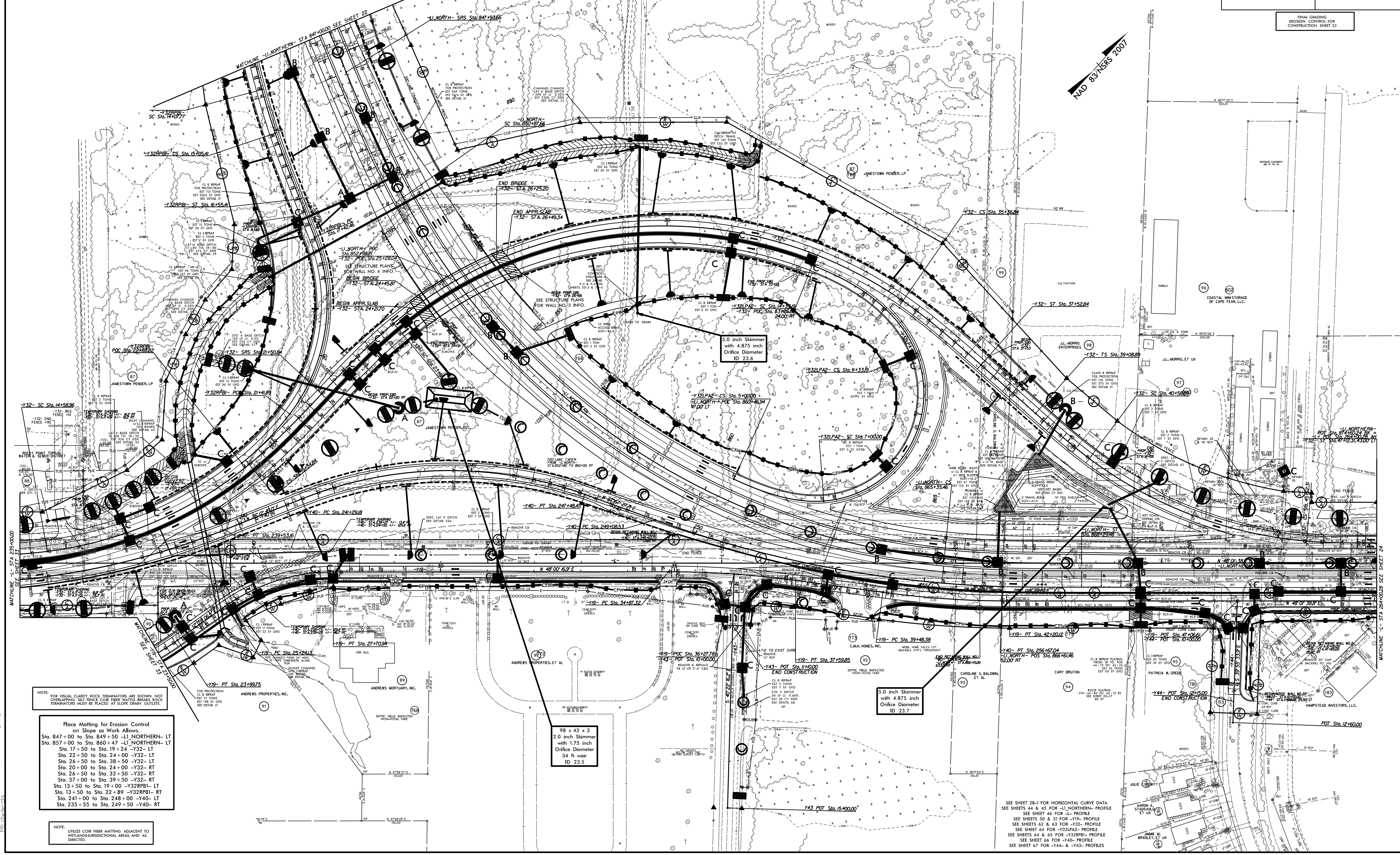
JAMESTOWN PENDER, LP

5/14/99



PROJECT REFERENCE NO.		SHEET NO.	
R-3300B		EC-53/CONST.23	
RW SHEET NO.			
ROADWAY DESIGN ENGINEER		HYDRAULICS ENGINEER	

FINAL GRADING EROSION CONTROL FOR CONSTRUCTION SHEET 23



NOTE: FOR VISUAL CLARITY ROCK TERMINATORS ARE SHOWN NOT OVERLAPPING SILT FENCE CORNER FIBER WATTLE BREAKS. ROCK TERMINATORS MUST BE PLACED AT SLOPE DRAIN OUTLETS.

Place Matting for Erosion Control on Slope as Work Allows.

Sta. 847+00 to Sta. 849+50 -L1-NORTHERN- LT
 Sta. 857+00 to Sta. 860+47 -L1-NORTHERN- LT
 Sta. 17+50 to Sta. 19+24 -Y32- LT
 Sta. 22+50 to Sta. 24+00 -Y32- LT
 Sta. 26+50 to Sta. 38+50 -Y32- LT
 Sta. 20+00 to Sta. 24+00 -Y32- RT
 Sta. 26+50 to Sta. 33+50 -Y32- RT
 Sta. 37+00 to Sta. 39+50 -Y32- RT
 Sta. 13+50 to Sta. 19+00 -Y32RBL- LT
 Sta. 13+50 to Sta. 22+89 -Y32RBL- RT
 Sta. 241+00 to Sta. 248+00 -Y40- LT
 Sta. 235+55 to Sta. 249+50 -Y40- RT

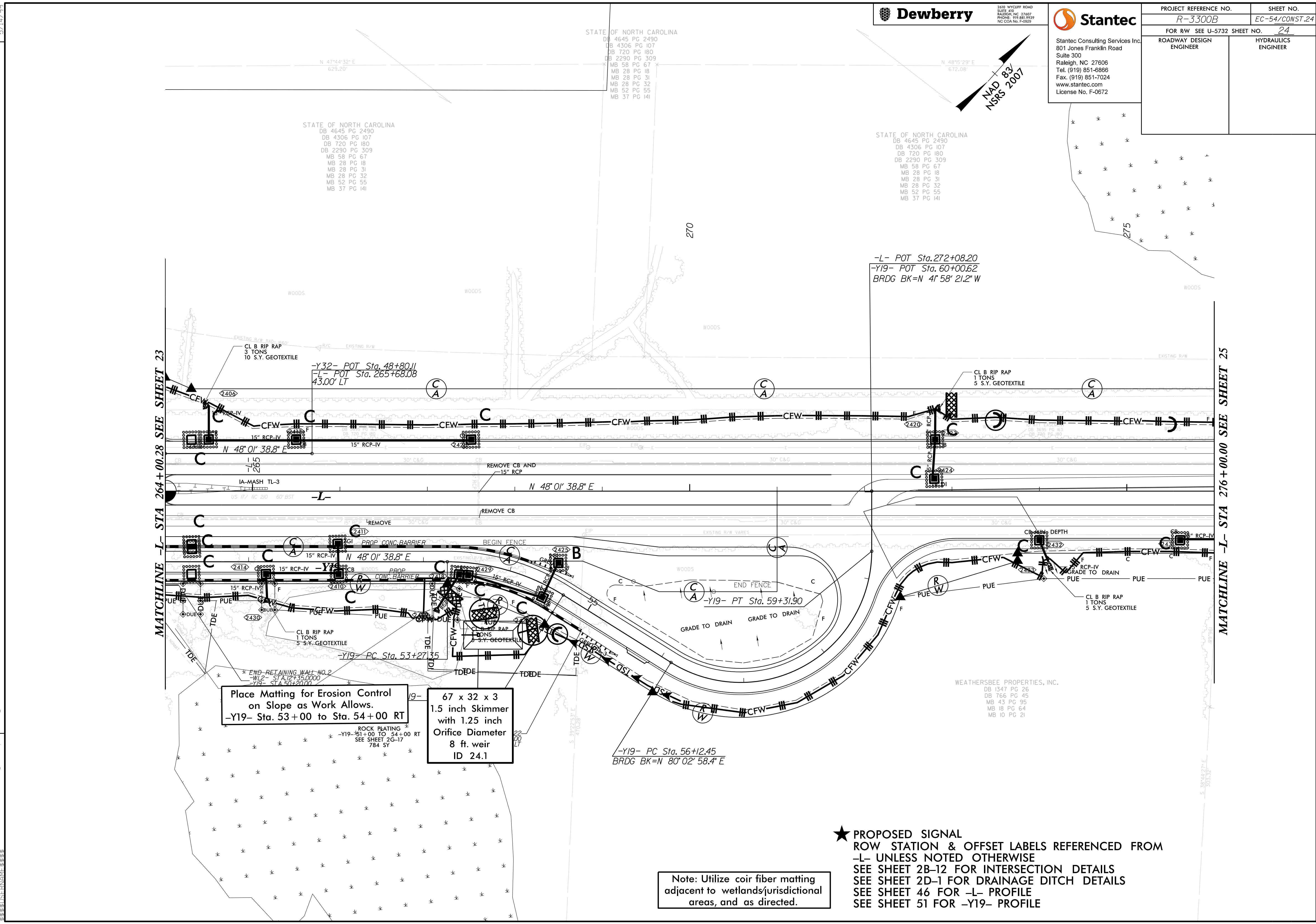
NOTE: UTILIZE COIR FIBER MATTING ADJACENT TO WETLANDS/JURISDICTIONAL AREAS, AND AS DIRECTED.

SEE SHEET 28-1 FOR HORIZONTAL CURVE DATA SEE SHEETS 44 & 45 FOR -L1-NORTHERN- PROFILE SEE SHEET 46 FOR -L- PROFILE SEE SHEETS 50 & 51 FOR -Y19- PROFILE SEE SHEETS 62 & 63 FOR -Y32- PROFILE SEE SHEET 64 FOR -Y32PA2- PROFILE SEE SHEETS 64 & 65 FOR -Y32RBL- PROFILE SEE SHEET 66 FOR -Y40- PROFILE SEE SHEET 67 FOR -Y44- & -Y43- PROFILES

R:\5300B\EC-dsn-psh-53-f.g.dgn

PROJECT REFERENCE NO.	SHEET NO.
R-3300B	EC-54/CONST.24
FOR RW SEE U-5732 SHEET NO.	24
ROADWAY DESIGN ENGINEER	HYDRAULICS ENGINEER

REVISIONS
 03/15/2019 - RW REVISION: ADDED ROW, DUE, PUE & TDE ON PARCEL 183, ADDED ROW & PUE ON PARCEL 184. - STANTEC
 09-SEP-2020 07:51am Sheets\R-3300B_hyd.ec.psh:54.dgn
 5/14/99



Place Matting for Erosion Control on Slope as Work Allows.
-Y19- Sta. 53+00 to Sta. 54+00 RT

67 x 32 x 3
1.5 inch Skimmer
with 1.25 inch
Orifice Diameter
8 ft. weir
ID 24.1

Note: Utilize coir fiber matting adjacent to wetlands/jurisdictional areas, and as directed.

★ PROPOSED SIGNAL
ROW STATION & OFFSET LABELS REFERENCED FROM
-L- UNLESS NOTED OTHERWISE
SEE SHEET 2B-12 FOR INTERSECTION DETAILS
SEE SHEET 2D-1 FOR DRAINAGE DITCH DETAILS
SEE SHEET 46 FOR -L- PROFILE
SEE SHEET 51 FOR -Y19- PROFILE

5/14/99

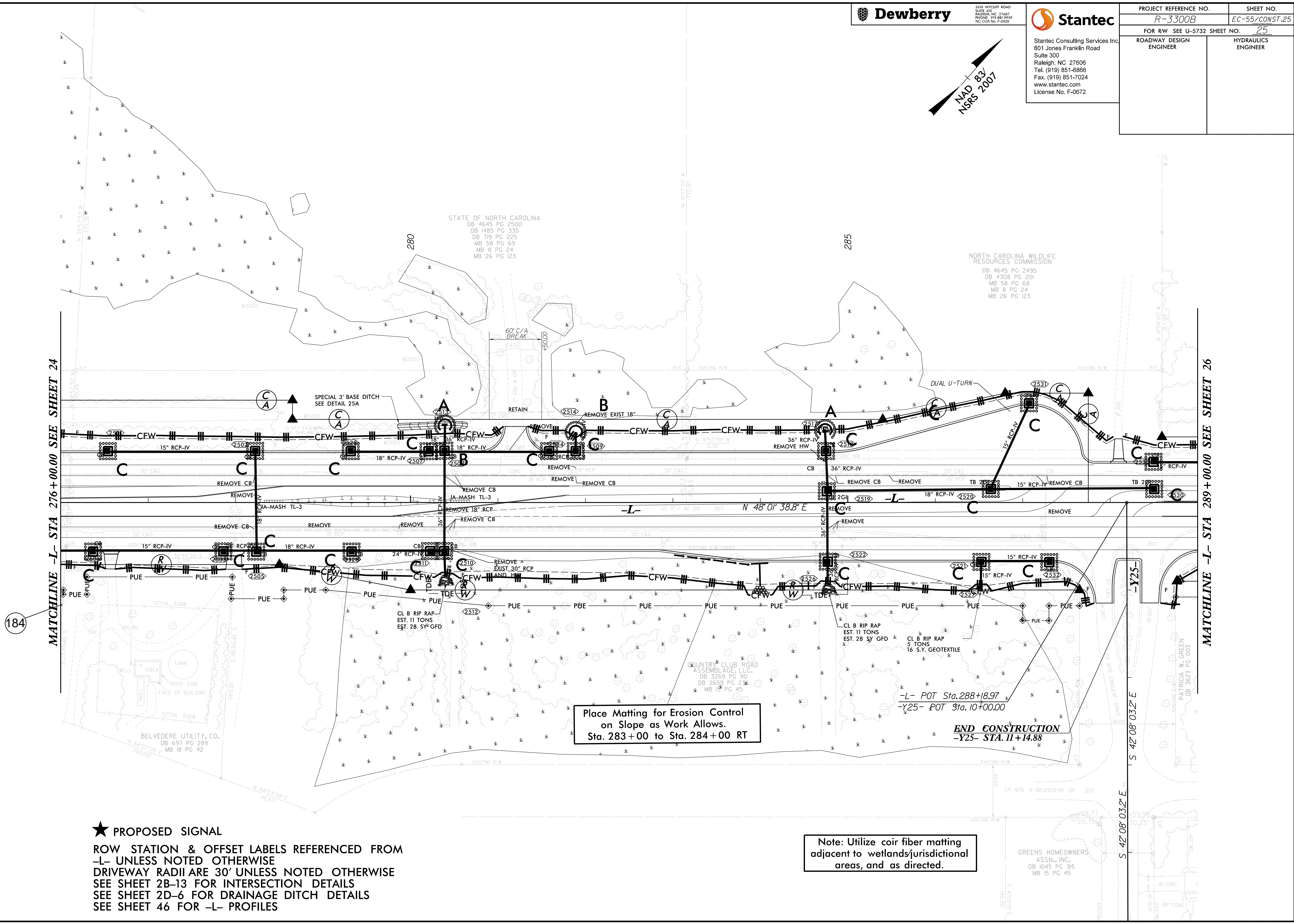
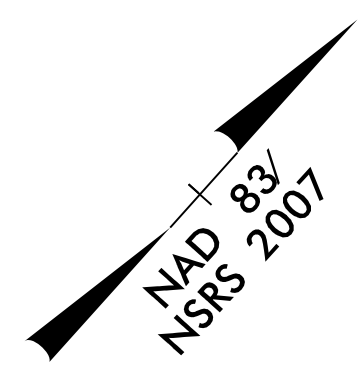


2610 WILLOW ROAD
SUITE 410
RALEIGH, NC 27607
PHONE: 919.883.9729
NC CDA No. F-0929



Stantec Consulting Services Inc.
801 Jones Franklin Road
Suite 300
Raleigh, NC 27606
Tel. (919) 851-6866
Fax. (919) 851-7024
www.stantec.com
License No. F-0672

PROJECT REFERENCE NO. <i>R-3300B</i>	SHEET NO. <i>EC-55/CONST.25</i>
FOR RW SEE U-5732 SHEET NO. <i>25</i>	
ROADWAY DESIGN ENGINEER	HYDRAULICS ENGINEER



184

★ PROPOSED SIGNAL
 ROW STATION & OFFSET LABELS REFERENCED FROM
 -L- UNLESS NOTED OTHERWISE
 DRIVEWAY RADII ARE 30' UNLESS NOTED OTHERWISE
 SEE SHEET 2B-13 FOR INTERSECTION DETAILS
 SEE SHEET 2D-6 FOR DRAINAGE DITCH DETAILS
 SEE SHEET 46 FOR -L- PROFILES

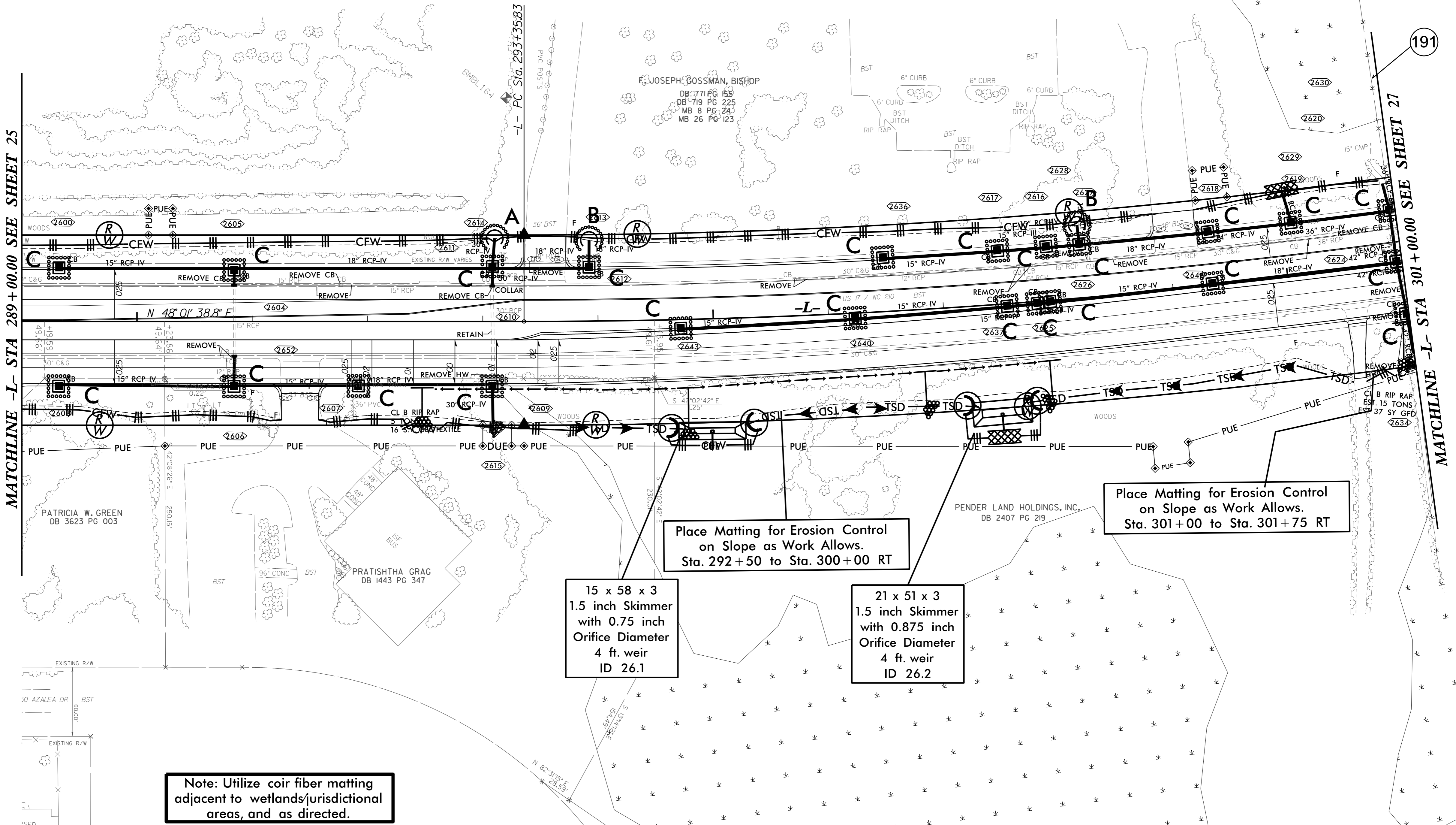
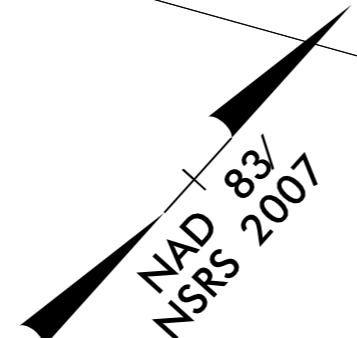
Place Matting for Erosion Control
 on Slope as Work Allows.
 Sta. 283+00 to Sta. 284+00 RT

Note: Utilize coir fiber matting
 adjacent to wetlands/jurisdictional
 areas, and as directed.

END CONSTRUCTION
 -Y25- STA. 11+14.88

09-SEP-2021 10:30 am Sheets\R-3300B_hyd.ec.psh.5F.dgn

PROJECT REFERENCE NO. <i>R-3300B</i>	SHEET NO. <i>EC-56/CONST.26</i>
FOR RW SEE U-5732 SHEET NO. <i>26</i>	
ROADWAY DESIGN ENGINEER	HYDRAULICS ENGINEER



MATCHLINE -L- STA 289+00.00 SEE SHEET 25

MATCHLINE -L- STA 301+00.00 SEE SHEET 27

Place Matting for Erosion Control on Slope as Work Allows. Sta. 292+50 to Sta. 300+00 RT

Place Matting for Erosion Control on Slope as Work Allows. Sta. 301+00 to Sta. 301+75 RT

15 x 58 x 3
1.5 inch Skimmer
with 0.75 inch
Orifice Diameter
4 ft. weir
ID 26.1

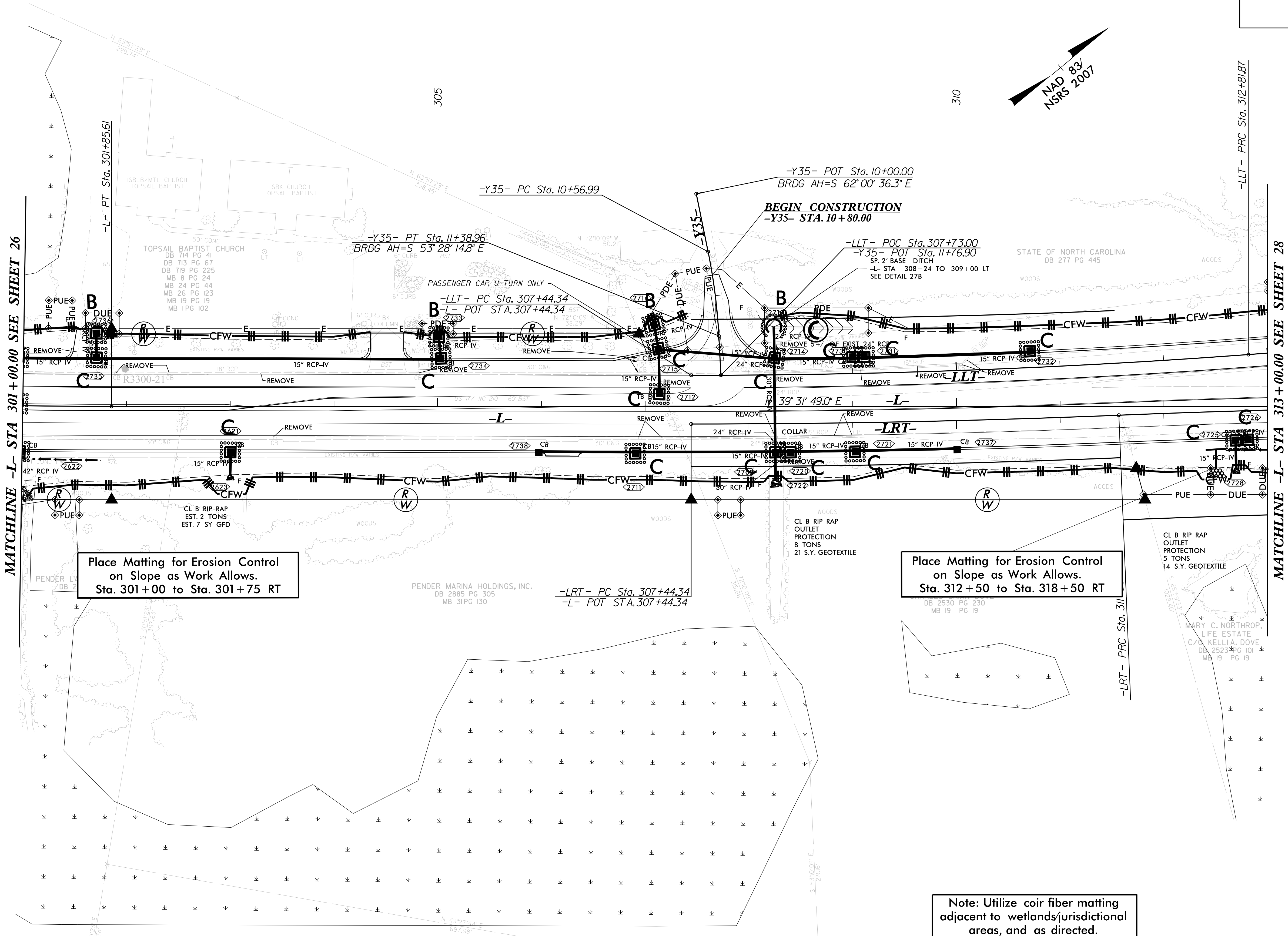
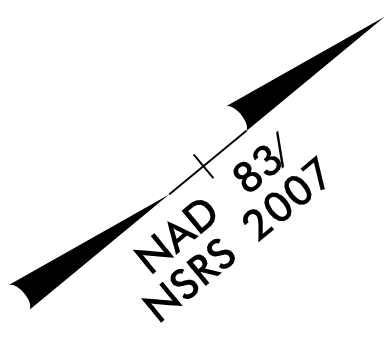
21 x 51 x 3
1.5 inch Skimmer
with 0.875 inch
Orifice Diameter
4 ft. weir
ID 26.2

Note: Utilize coir fiber matting adjacent to wetlands/jurisdictional areas, and as directed.

DRIVEWAY RADII ARE 10' UNLESS NOTED OTHERWISE

SEE SHEETS 46 & 47 FOR -L- PROFILES

4/6/2020 1:46:36 PM
USER: N:\R-3300B\hyd_ec_psh_56.dgn



Place Matting for Erosion Control on Slope as Work Allows. Sta. 301+00 to Sta. 301+75 RT

Place Matting for Erosion Control on Slope as Work Allows. Sta. 312+50 to Sta. 318+50 RT

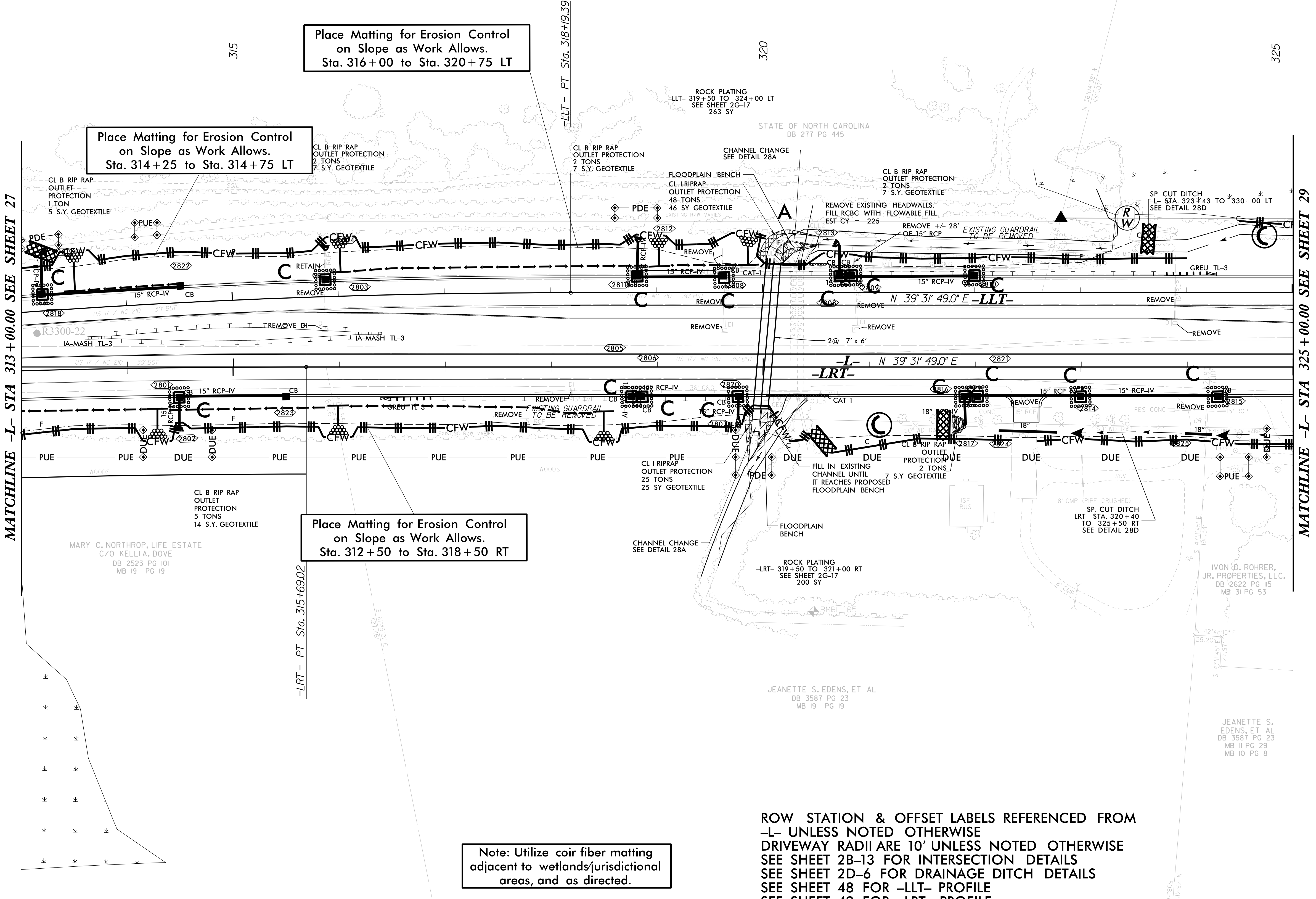
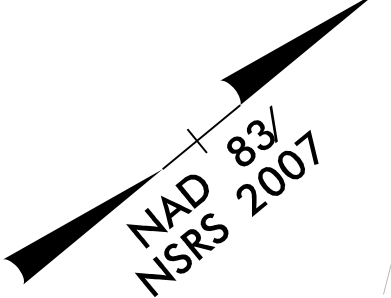
Note: Utilize coir fiber matting adjacent to wetlands/jurisdictional areas, and as directed.

REVISIONS
 11/28/2018 - RW REVISION: ADDED PARCEL NUMBER 227. - STANTEC

08-SEP-2021 10:34
 I:\cs\I\eco\2021\10\11\plan_Sheets\R-3300B_hyd.ec.psh:57.dgn

5/14/99

PROJECT REFERENCE NO.	SHEET NO.
R-3300B	EC-58/CONST.28
FOR RW SEE U-5732 SHEET NO.	28
ROADWAY DESIGN ENGINEER	HYDRAULICS ENGINEER



Place Matting for Erosion Control on Slope as Work Allows. Sta. 314+25 to Sta. 314+75 LT

Place Matting for Erosion Control on Slope as Work Allows. Sta. 316+00 to Sta. 320+75 LT

Place Matting for Erosion Control on Slope as Work Allows. Sta. 312+50 to Sta. 318+50 RT

Note: Utilize coir fiber matting adjacent to wetlands/jurisdictional areas, and as directed.

ROW STATION & OFFSET LABELS REFERENCED FROM -L- UNLESS NOTED OTHERWISE
DRIVEWAY RADII ARE 10' UNLESS NOTED OTHERWISE
SEE SHEET 2B-13 FOR INTERSECTION DETAILS
SEE SHEET 2D-6 FOR DRAINAGE DITCH DETAILS
SEE SHEET 48 FOR -LLT- PROFILE
SEE SHEET 49 FOR -LRT- PROFILE

REVISIONS

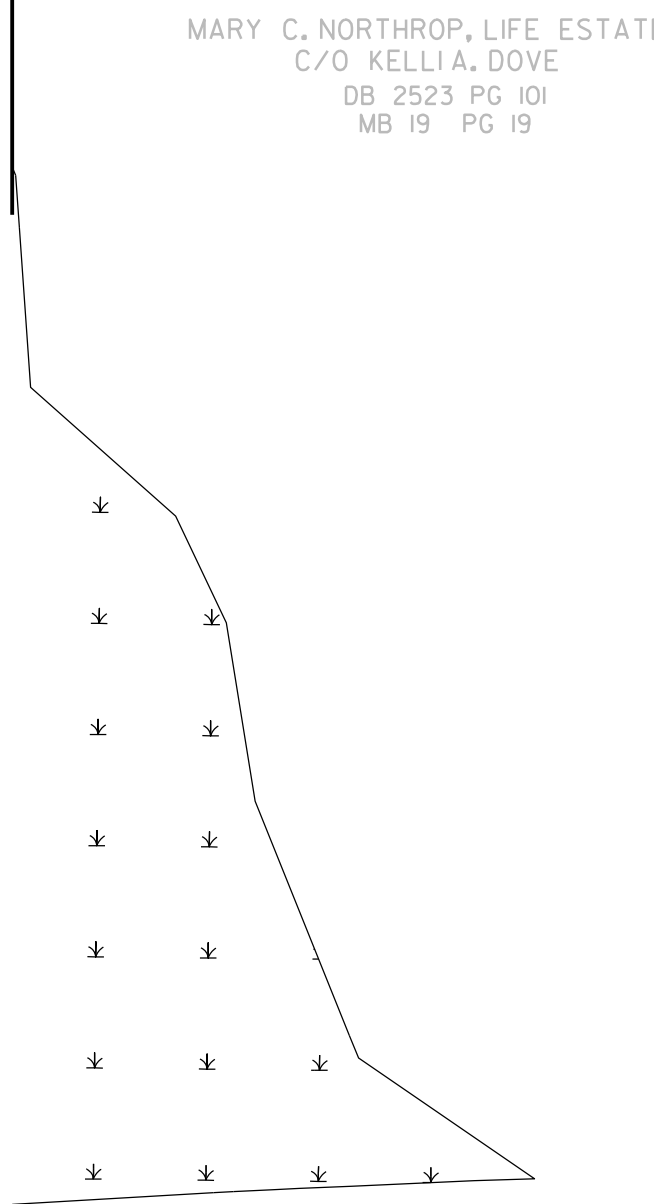
11/28/2018 - RW REVISION: ADDED PARCEL NUMBER 227. - STANTEC
10/31/2019 - RW REVISION: REVISED PUE AND DUE ON PARCEL NO. 196. - STANTEC

09-SEP-2021 09:07 am Sheets\R-3300B_hyd.ec.psh:58.dgn
10/31/2019 10:31:58 AM

5/14/99

MATCHLINE -L- STA 313+00.00 SEE SHEET 27

MATCHLINE -L- STA 325+00.00 SEE SHEET 29



REVISIONS
11/28/2018 - RW REVISION: ADDED "DO NOT DISTURB" NOTES FOR THE PUMP HOUSE, LIGHT, FUEL PUMP & TIRE AIR STATION ON PARCEL 198. - STANTEC

4/6/2020 7:13 PM
R-3300B-hyd-ec-ph-59.dgn
USER: h...

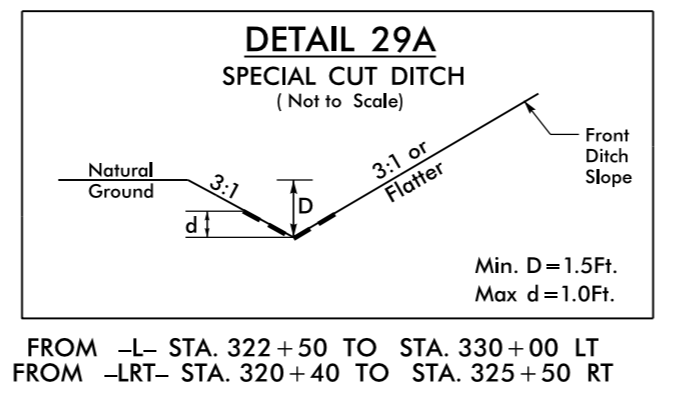
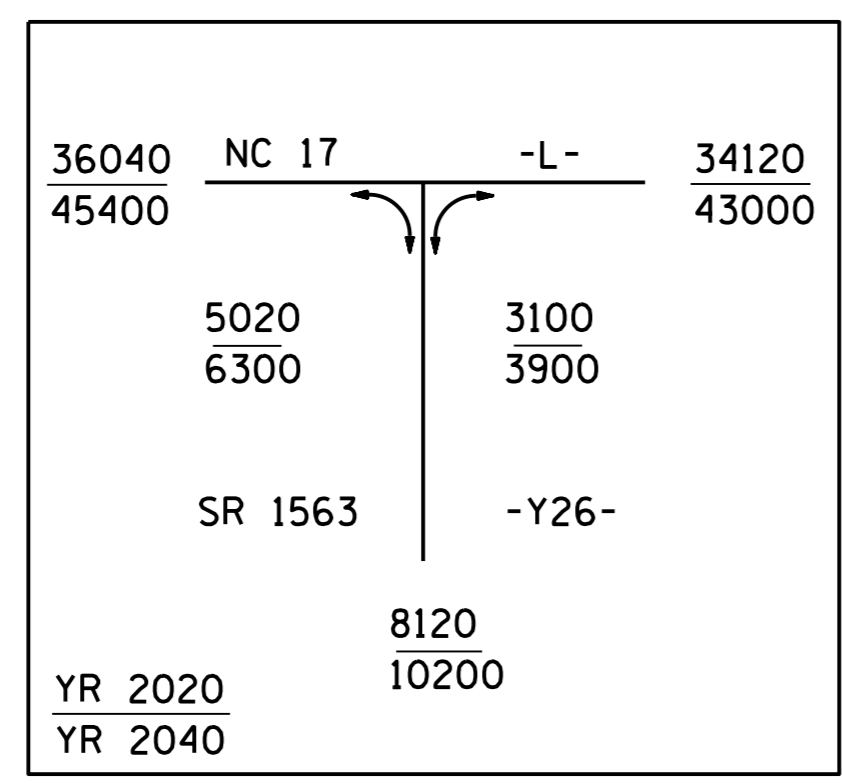


2400 WYCLIFF ROAD
SUITE 400
RALEIGH, NC 27607
PHONE: 919.881.9939
NC COA No. F-0929

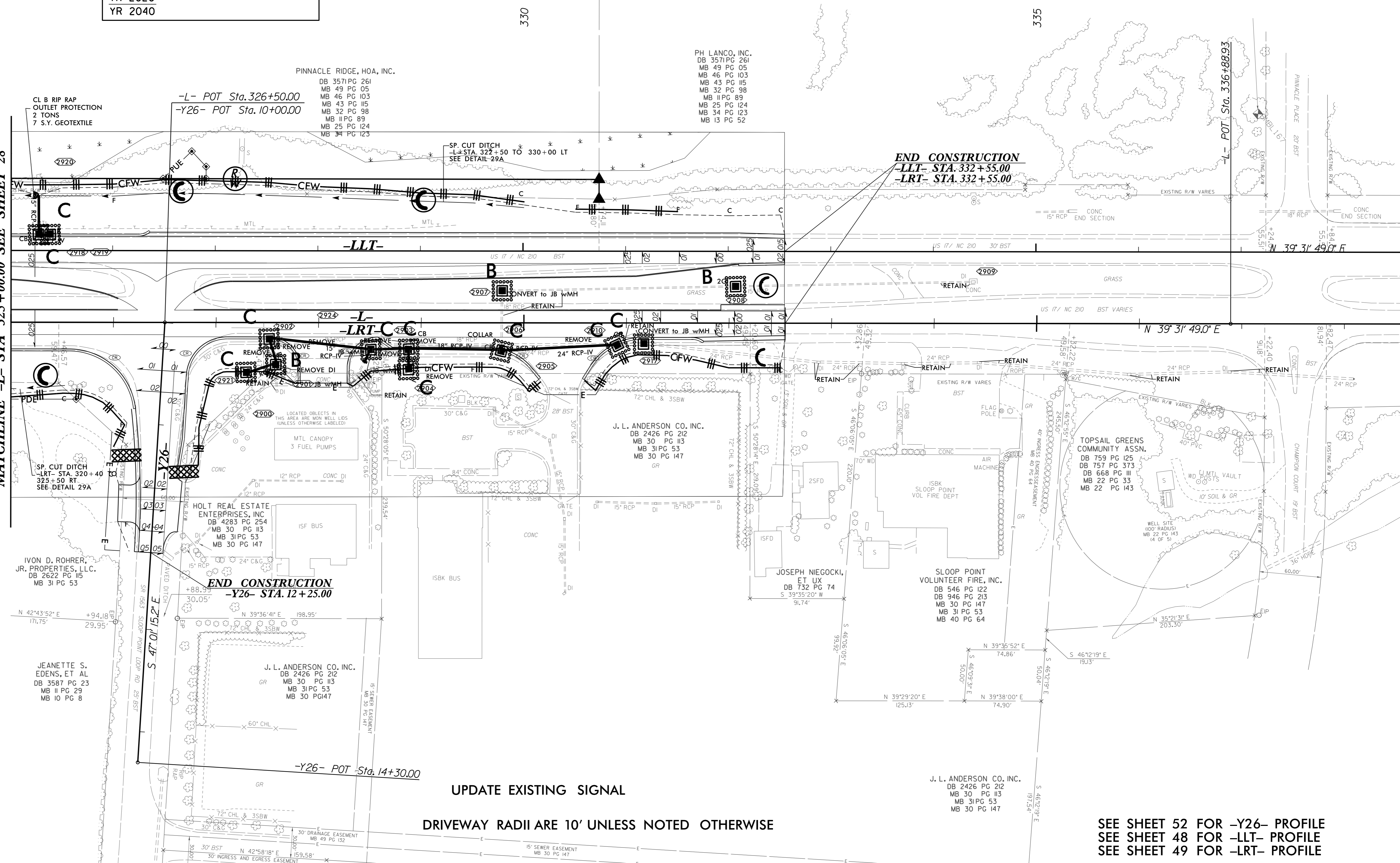


Stantec Consulting Services Inc.
801 Jones Franklin Road
Suite 300
Raleigh, NC 27606
Tel. (919) 851-6866
Fax. (919) 851-7024
www.stantec.com
License No. F-0672

PROJECT REFERENCE NO.	SHEET NO.
R-3300B	EC-59/CONST.29
FOR RW SEE U-5732	SHEET NO. 29
ROADWAY DESIGN ENGINEER	HYDRAULICS ENGINEER



MATCHLINE -L- STA 325+00.00 SEE SHEET 28



UPDATE EXISTING SIGNAL
DRIVEWAY RADII ARE 10' UNLESS NOTED OTHERWISE

SEE SHEET 52 FOR -Y26- PROFILE
SEE SHEET 48 FOR -LLT- PROFILE
SEE SHEET 49 FOR -LRT- PROFILE

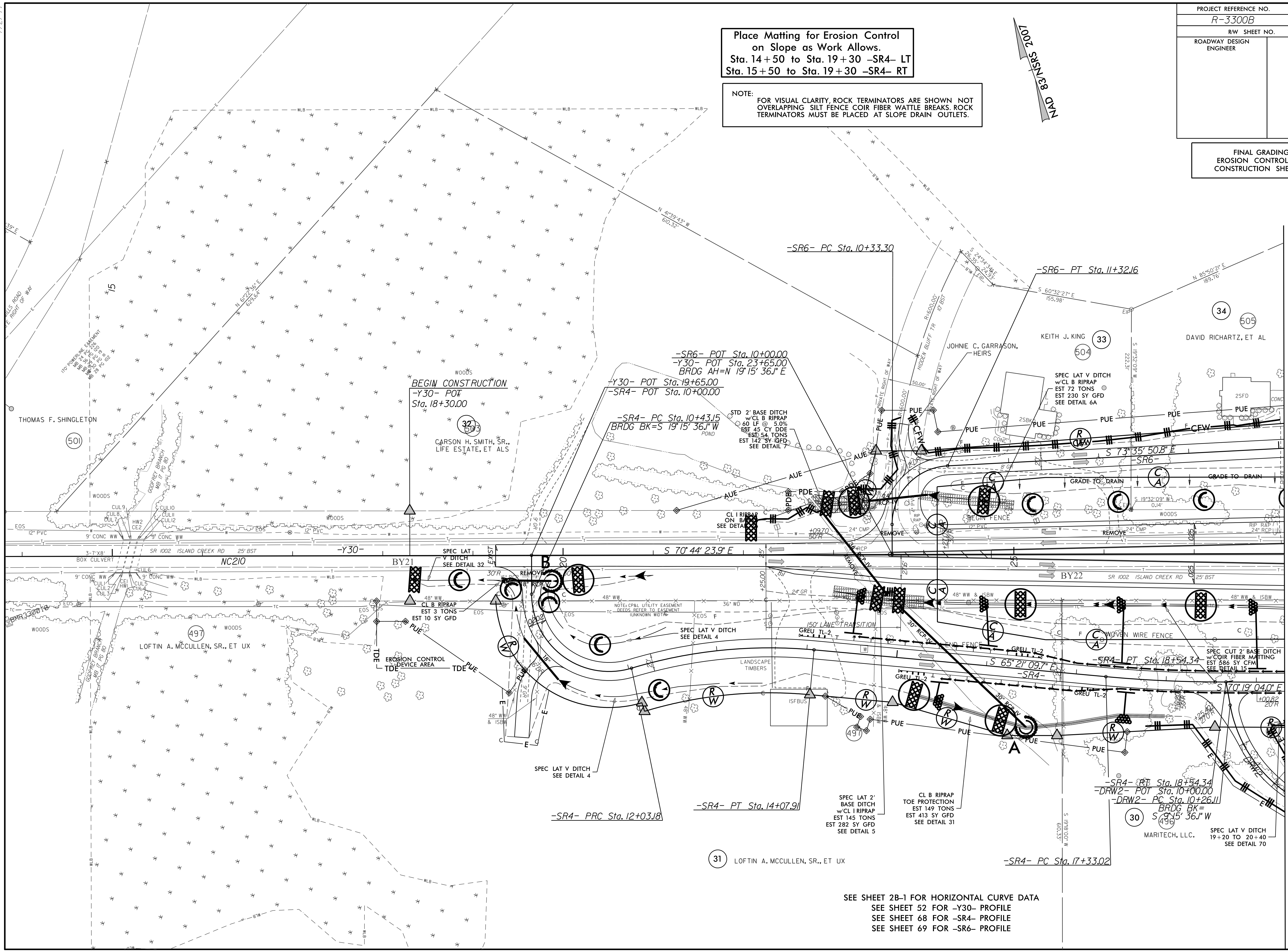
7/27/99

PROJECT REFERENCE NO.	SHEET NO.
R-3300B	EC-60/CONST.30
RW SHEET NO.	
ROADWAY DESIGN ENGINEER	HYDRAULICS ENGINEER

Place Matting for Erosion Control
on Slope as Work Allows.
Sta. 14+50 to Sta. 19+30 -SR4- LT
Sta. 15+50 to Sta. 19+30 -SR4- RT

NOTE:
FOR VISUAL CLARITY, ROCK TERMINATORS ARE SHOWN, NOT
OVERLAPPING SILT FENCE COIR FIBER WATTLE BREAKS. ROCK
TERMINATORS MUST BE PLACED AT SLOPE DRAIN OUTLETS.

FINAL GRADING
EROSION CONTROL FOR
CONSTRUCTION SHEET 30



MATCHLINE -Y30- STA 28+00.00 SEE SHEET 5

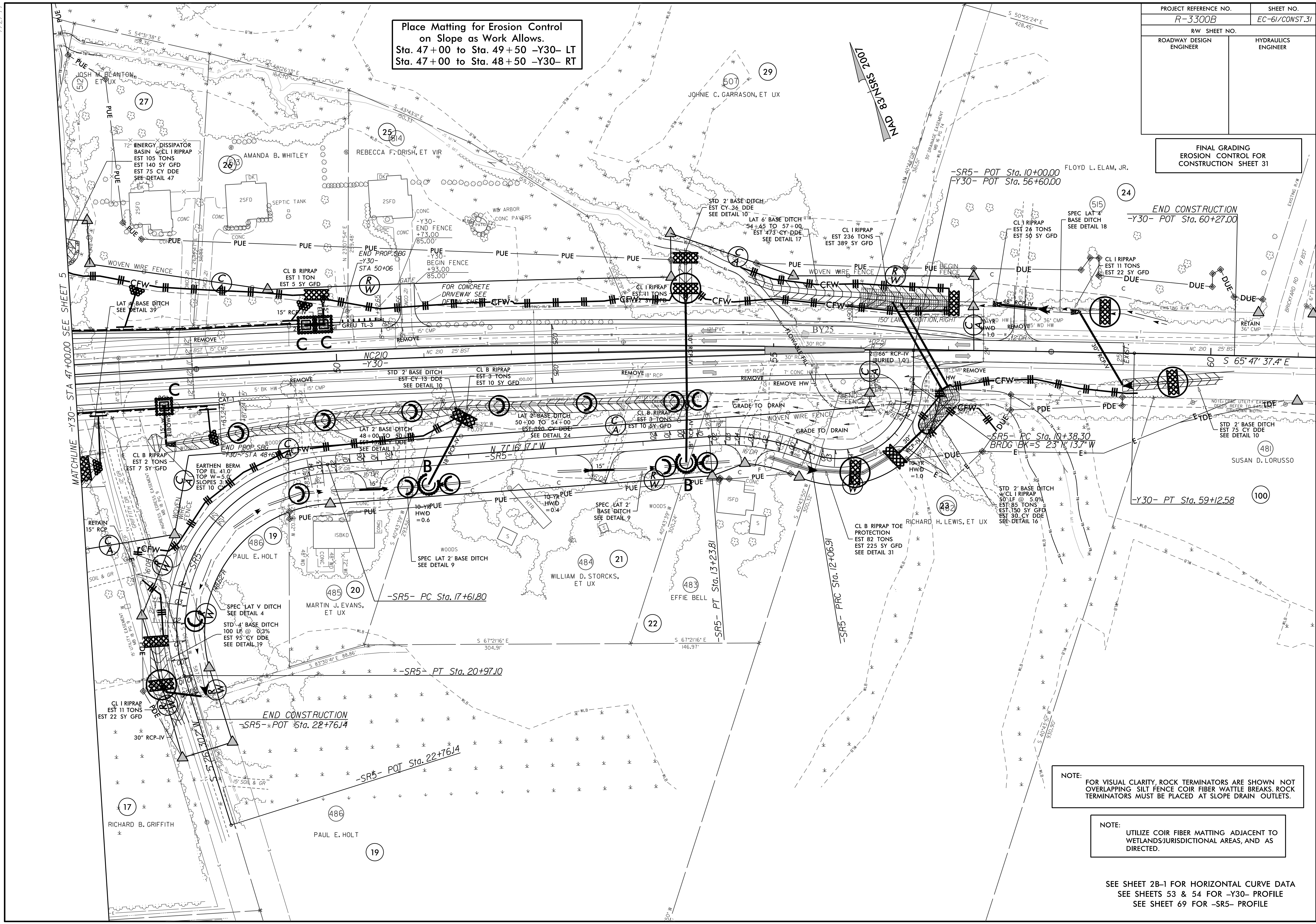
SEE SHEET 2B-1 FOR HORIZONTAL CURVE DATA
SEE SHEET 52 FOR -Y30- PROFILE
SEE SHEET 68 FOR -SR4- PROFILE
SEE SHEET 69 FOR -SR6- PROFILE

7/2/99

PROJECT REFERENCE NO.	SHEET NO.
R-3300B	EC-61/CONST.31
RW SHEET NO.	
ROADWAY DESIGN ENGINEER	HYDRAULICS ENGINEER

Place Matting for Erosion Control
on Slope as Work Allows.
Sta. 47+00 to Sta. 49+50 -Y30- LT
Sta. 47+00 to Sta. 48+50 -Y30- RT

FINAL GRADING
EROSION CONTROL FOR
CONSTRUCTION SHEET 31



NOTE: FOR VISUAL CLARITY, ROCK TERMINATORS ARE SHOWN NOT OVERLAPPING SILT FENCE COIR FIBER WATTLE BREAKS. ROCK TERMINATORS MUST BE PLACED AT SLOPE DRAIN OUTLETS.

NOTE: UTILIZE COIR FIBER MATTING ADJACENT TO WETLANDS/JURISDICTIONAL AREAS, AND AS DIRECTED.

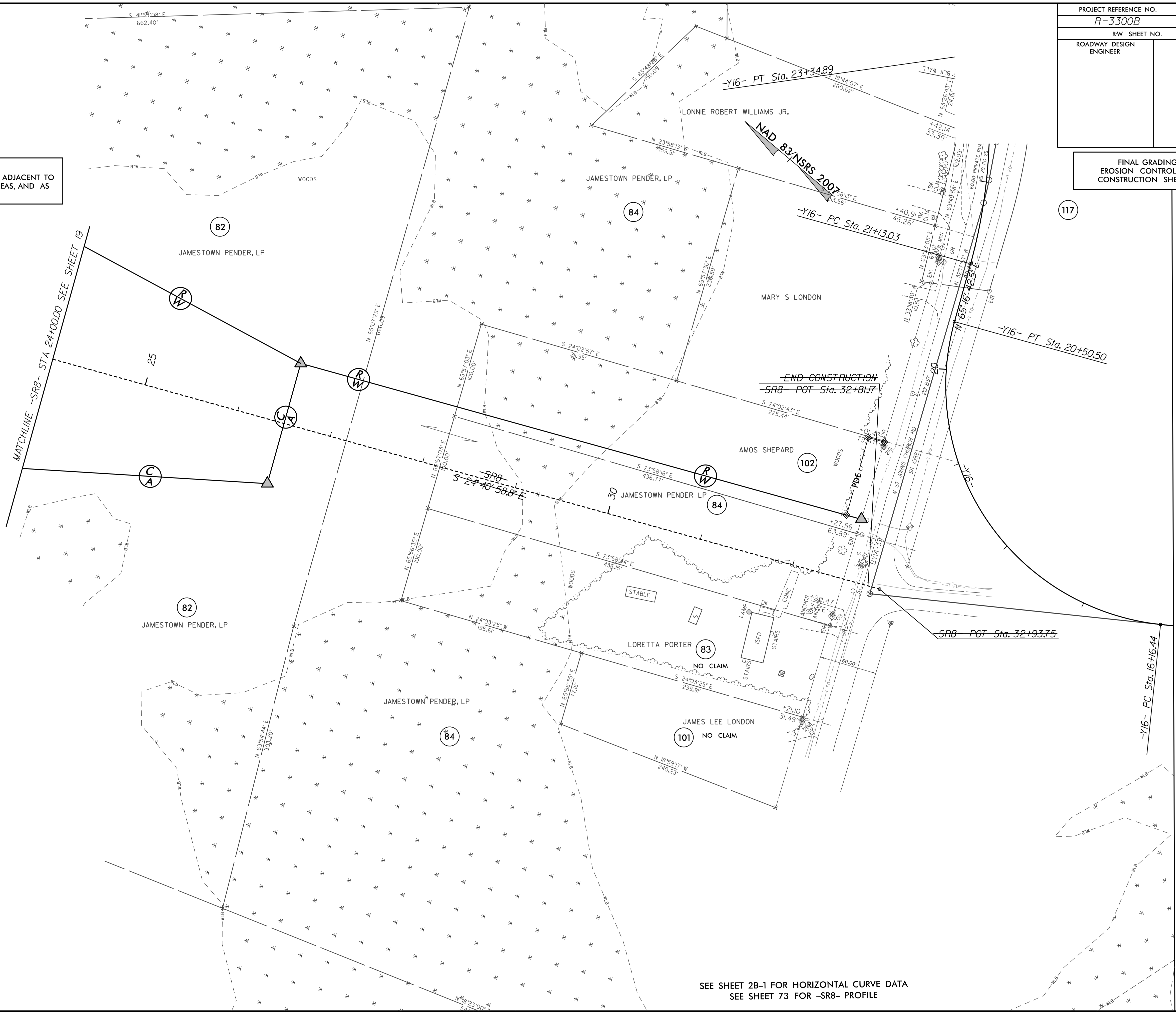
SEE SHEET 2B-1 FOR HORIZONTAL CURVE DATA
SEE SHEETS 53 & 54 FOR -Y30- PROFILE
SEE SHEET 69 FOR -SR5- PROFILE

7/22/99

PROJECT REFERENCE NO.	SHEET NO.
R-3300B	EC-62/CONST.32
RW SHEET NO.	
ROADWAY DESIGN ENGINEER	HYDRAULICS ENGINEER

FINAL GRADING
EROSION CONTROL FOR
CONSTRUCTION SHEET 32

NOTE:
UTILIZE COIR FIBER MATTING ADJACENT TO
WETLANDS/JURISDICTIONAL AREAS, AND AS
DIRECTED.



SEE SHEET 2B-1 FOR HORIZONTAL CURVE DATA
SEE SHEET 73 FOR -SRB- PROFILE

7/27/99

SEE SHEET 2B-1 FOR HORIZONTAL CURVE DATA
SEE SHEET 50 FOR -Y19- PROFILE
SEE SHEET 62 FOR -Y20- PROFILE
SEE SHEET 66 FOR -Y32- PROFILE
SEE SHEET 66 FOR -Y40- PROFILE
SEE SHEET 67 FOR -Y41- PROFILE
SEE SHEET 67 FOR -Y42- PROFILE

PROJECT REFERENCE NO.	SHEET NO.
R-3300B	EC-63/CONST.33
RW SHEET NO.	
ROADWAY DESIGN ENGINEER	HYDRAULICS ENGINEER

FINAL GRADING
EROSION CONTROL FOR
CONSTRUCTION SHEET 33

