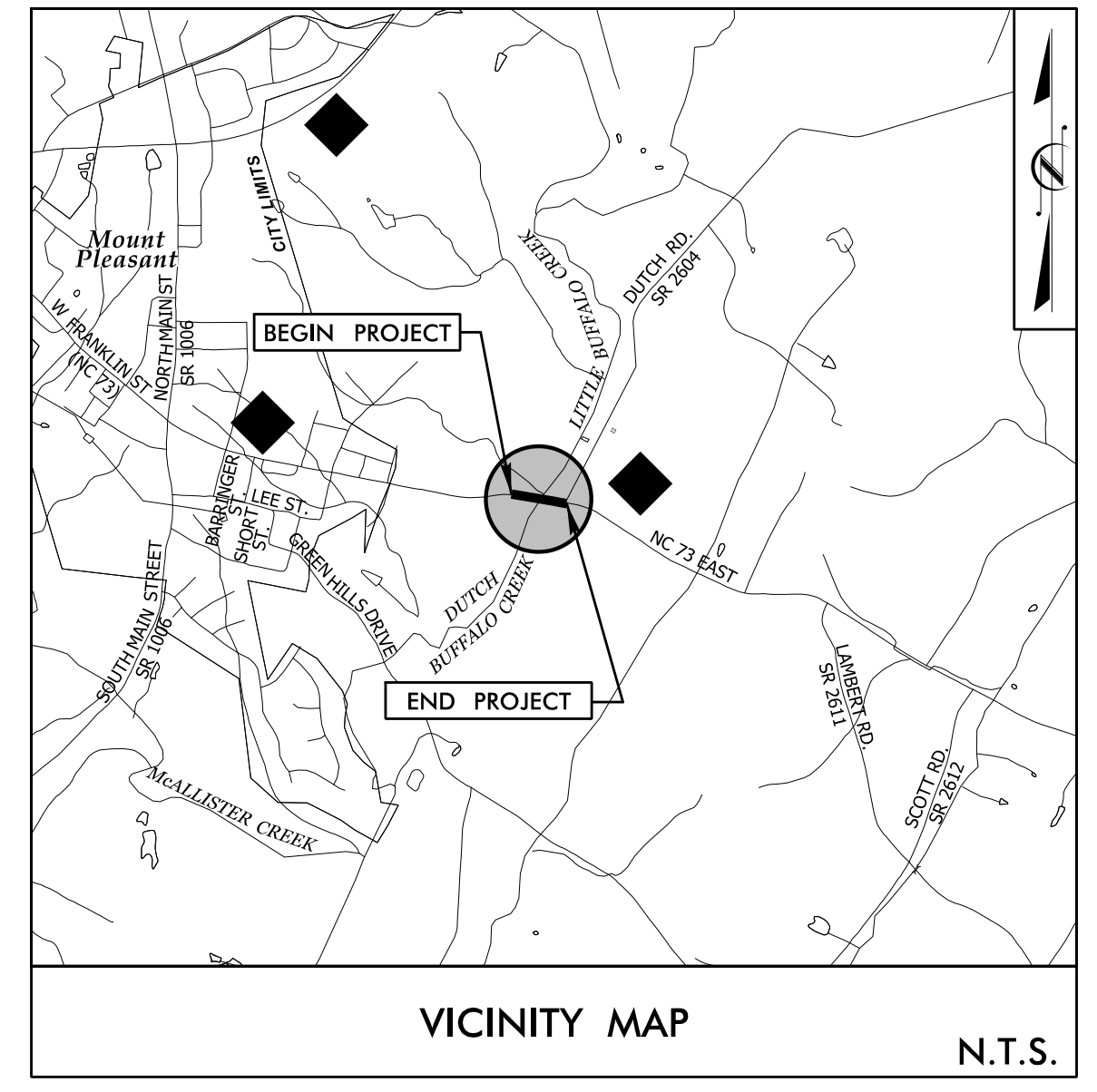


09/08/09

**TIP PROJECT: B-5813**

|               |             |
|---------------|-------------|
| T.I.P. NO.    | SHEET NO.   |
| <b>B-5813</b> | <b>UO-1</b> |

**NOTE:**  
 ALL UTILITY WORK SHOWN ON THIS SHEET IS DONE BY OTHERS.  
 NO PAYMENT WILL BE MADE TO THE CONTRACTOR FOR UTILITY WORK SHOWN ON THIS SHEET.

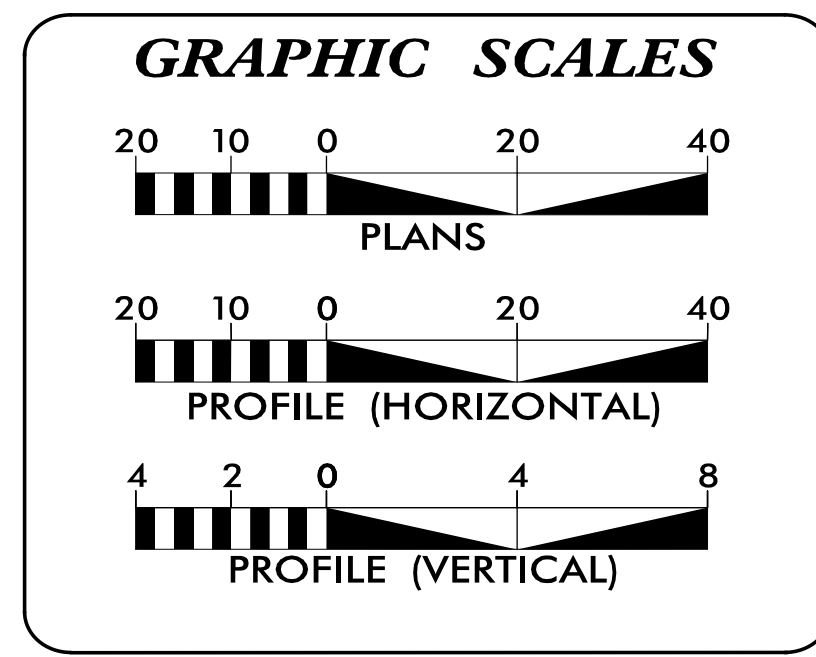
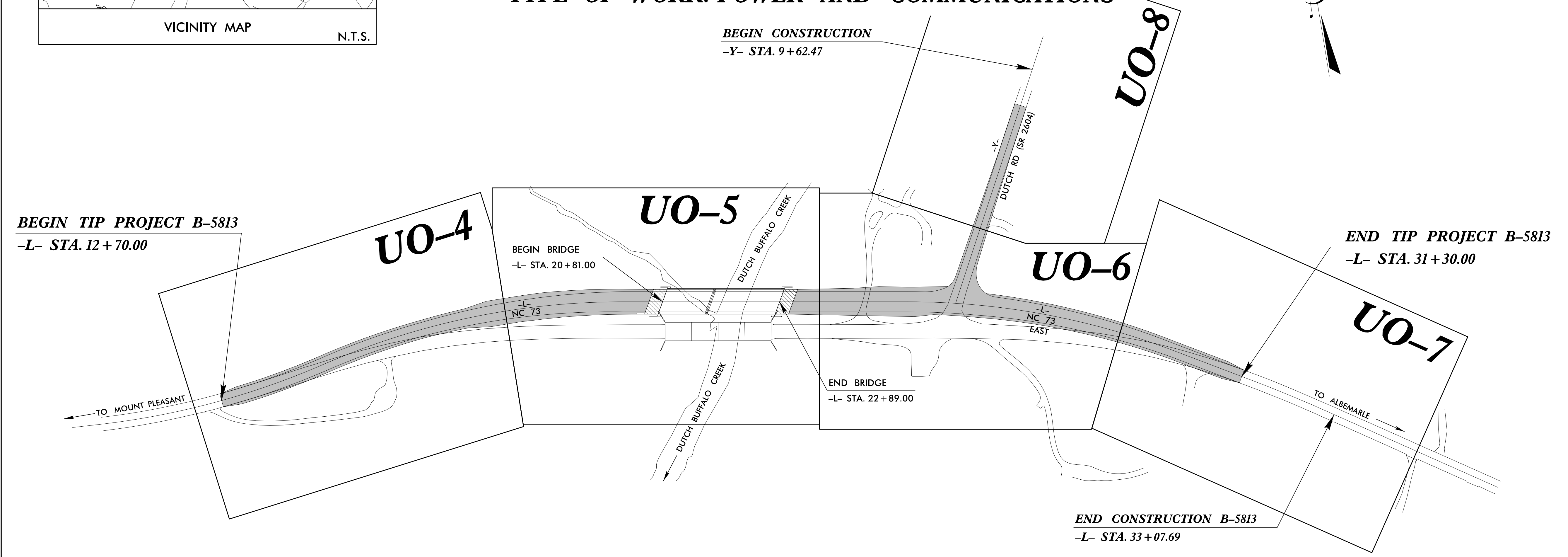
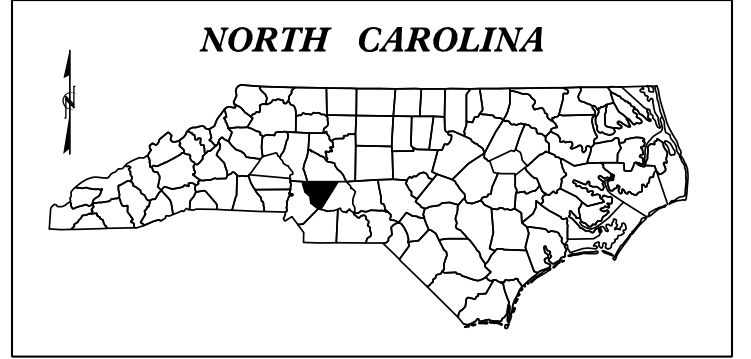


STATE OF NORTH CAROLINA  
 DIVISION OF HIGHWAYS

# UTILITIES BY OTHERS PLANS CABARRUS COUNTY

**LOCATION: BRIDGE #132 OVER  
 DUTCH BUFFALO CREEK ON NC 73**

**TYPE OF WORK: POWER AND COMMUNICATIONS**



**INDEX OF SHEETS**

| SHEET NO.:     | DESCRIPTION:    |
|----------------|-----------------|
| UO-1           | TITLE SHEET     |
| UO-4 THRU UO-8 | UBO PLAN SHEETS |

**UTILITY OWNERS WITH CONFLICTS**

(A) POWER - DUKE ENERGY  
 (B) TELEPHONE - WINDSTREAM  
 (C) CATV - CHARTER

PREPARED IN THE OFFICE OF:

STV Engineers, Inc.  
 900 West Trade St., Suite 715  
 Charlotte, NC 28202  
 NC License Number F-0991

**Oriana Hernandez, P.E.** UTILITY PROJECT MANAGER  
**Laura Braunsfeld** PROJECT UTILITY COORDINATOR  
**Logan Hedrick** PROJECT UTILITY CAD

**DIVISION OF HIGHWAYS  
 UTILITIES UNIT**  
 1555 MAIL SERVICES CENTER  
 RALEIGH, NC 27699-1555  
 PHONE (919) 707-6690  
 FAX (919) 250-4151

**Michael Bright** UTILITIES REGIONAL ENGINEER  
**Donald Hampton** UTILITIES ENGINEER  
**Amy York** UTILITIES AREA COORDINATOR  
**Steve Trexler** UTILITIES COORDINATOR

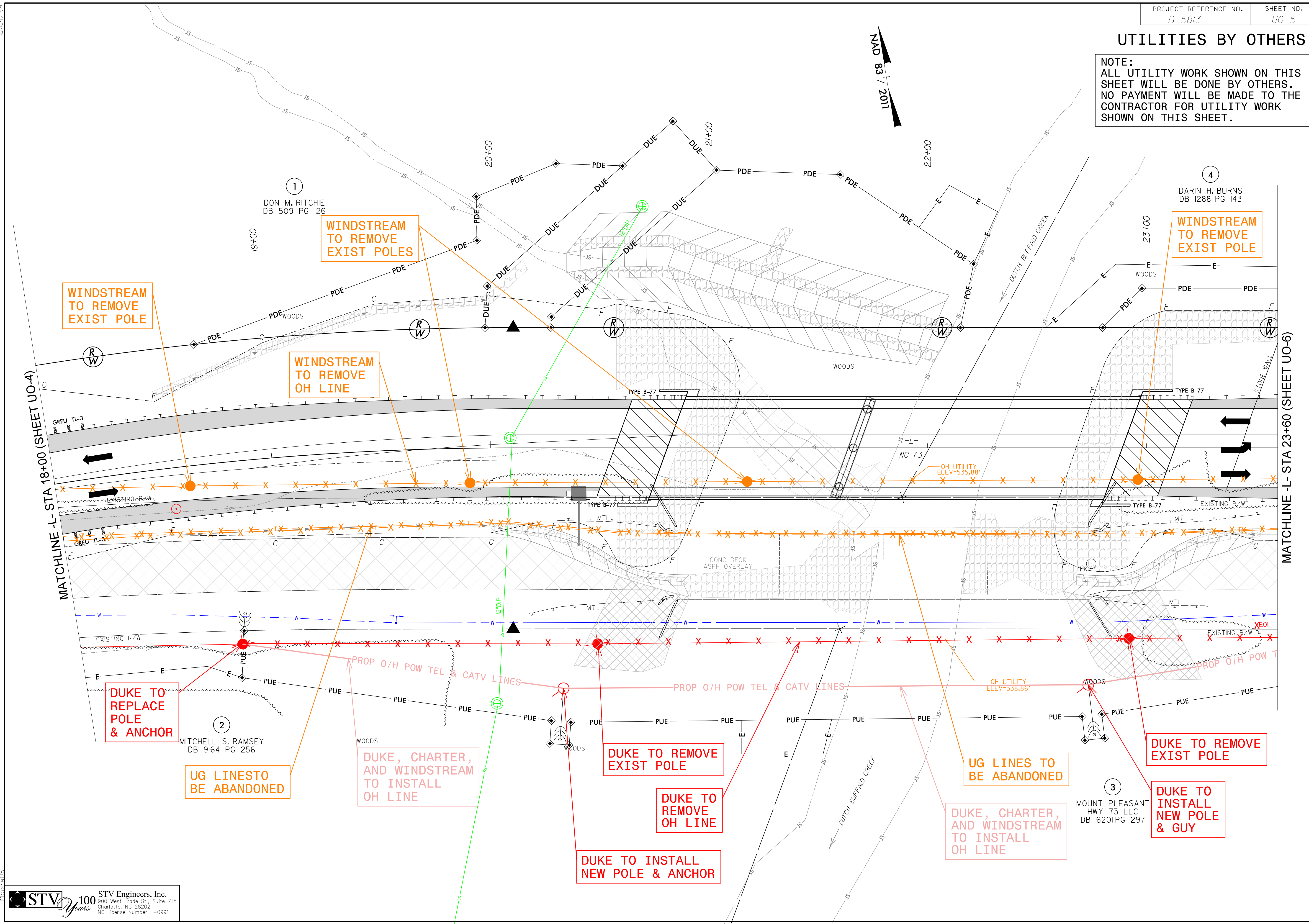
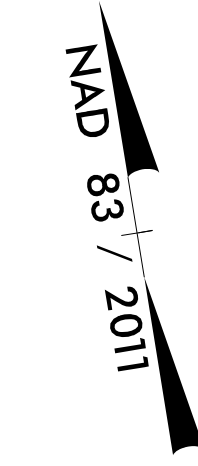
3/1/2021  
 R:\Utilities\Engineering\UBO\Proj\UBO Sheets\B5813\_rdy\_psh01\_rsh\_U001.dgn  
 MooréDS





### UTILITIES BY OTHERS

NOTE:  
ALL UTILITY WORK SHOWN ON THIS SHEET WILL BE DONE BY OTHERS. NO PAYMENT WILL BE MADE TO THE CONTRACTOR FOR UTILITY WORK SHOWN ON THIS SHEET.



MATCHLINE -L- STA 18+00 (SHEET U0-4)

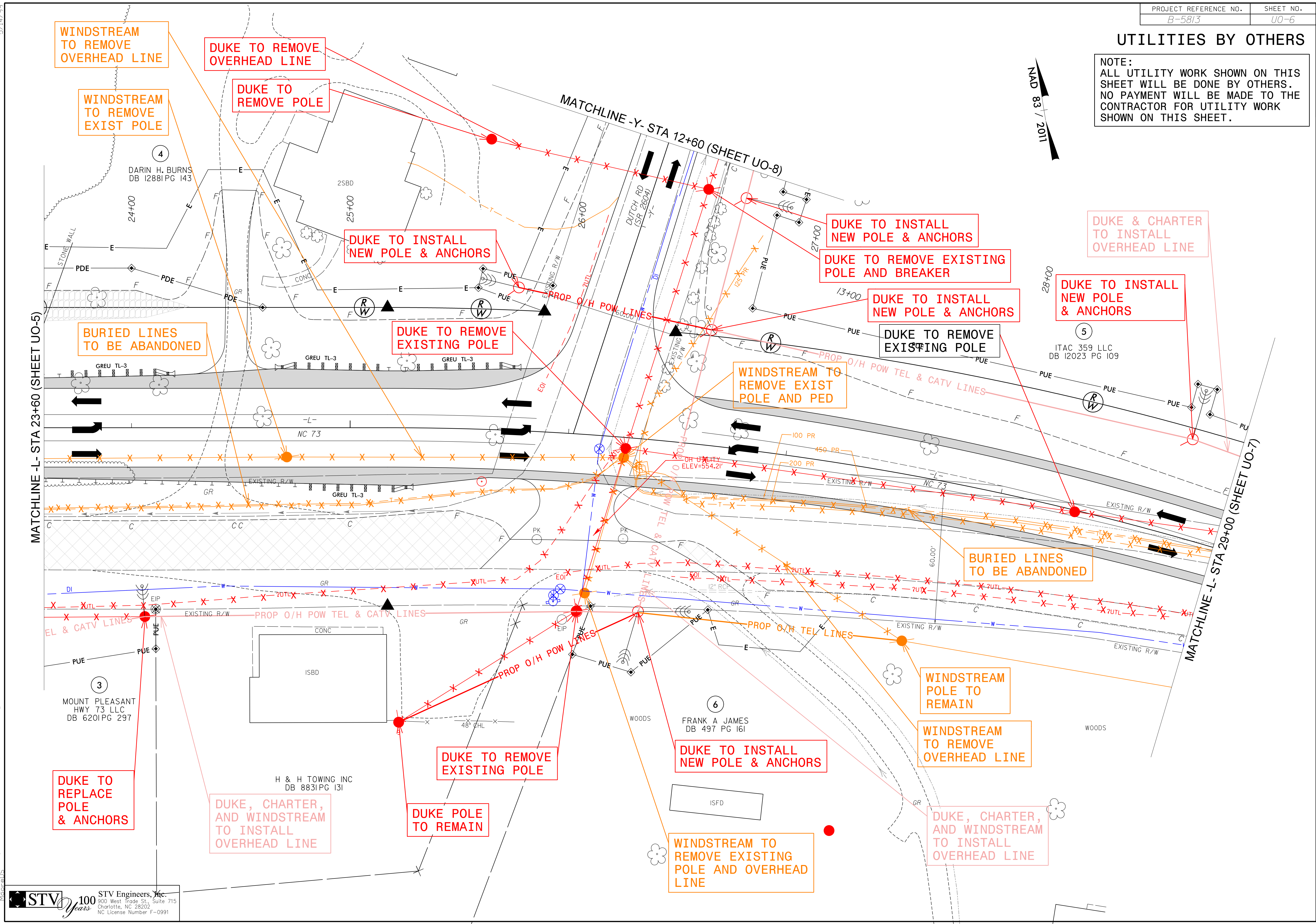
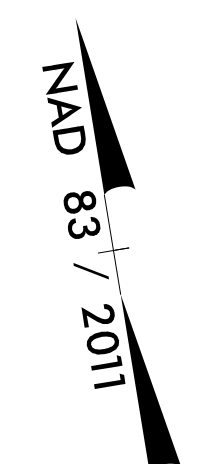
MATCHLINE -L- STA 23+60 (SHEET U0-6)

3/1/2021 10:00 AM C:\Users\jacob\OneDrive\Documents\Projects\B5813\Drawings\U0-5.dgn



### UTILITIES BY OTHERS

NOTE:  
ALL UTILITY WORK SHOWN ON THIS SHEET WILL BE DONE BY OTHERS. NO PAYMENT WILL BE MADE TO THE CONTRACTOR FOR UTILITY WORK SHOWN ON THIS SHEET.

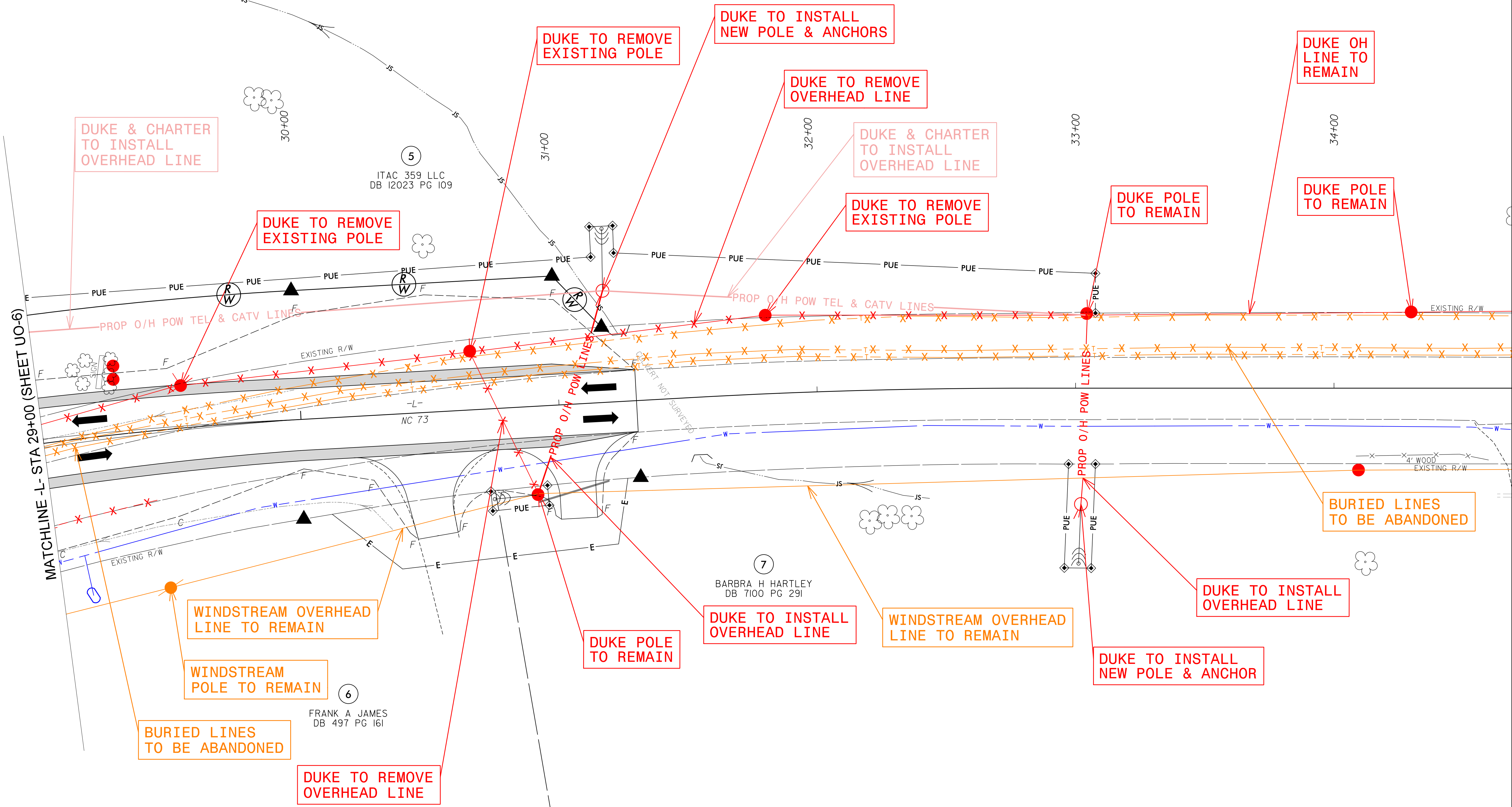
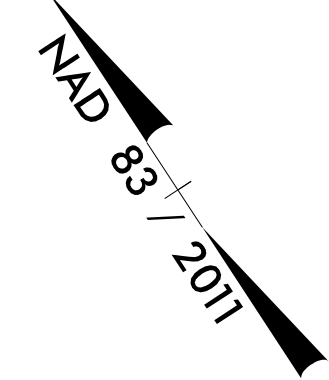


5/14/99  
3/1/2001  
C:\Users\m\OneDrive\Documents\Projects\B5813\B5813.dwg  
STV Engineers, Inc. - Charlotte, NC



### UTILITIES BY OTHERS

NOTE:  
ALL UTILITY WORK SHOWN ON THIS SHEET WILL BE DONE BY OTHERS. NO PAYMENT WILL BE MADE TO THE CONTRACTOR FOR UTILITY WORK SHOWN ON THIS SHEET.



MATCHLINE -L- STA 29+00 (SHEET U0-6)

WINDSTREAM OVERHEAD LINE TO REMAIN

WINDSTREAM POLE TO REMAIN

BURIED LINES TO BE ABANDONED

DUKE TO REMOVE OVERHEAD LINE

DUKE TO REMOVE EXISTING POLE

DUKE TO INSTALL NEW POLE & ANCHORS

DUKE TO REMOVE OVERHEAD LINE

DUKE & CHARTER TO INSTALL OVERHEAD LINE

DUKE TO REMOVE EXISTING POLE

DUKE POLE TO REMAIN

DUKE OH LINE TO REMAIN

DUKE POLE TO REMAIN

BURIED LINES TO BE ABANDONED

DUKE POLE TO REMAIN

DUKE TO INSTALL OVERHEAD LINE

WINDSTREAM OVERHEAD LINE TO REMAIN

DUKE TO INSTALL NEW POLE & ANCHOR

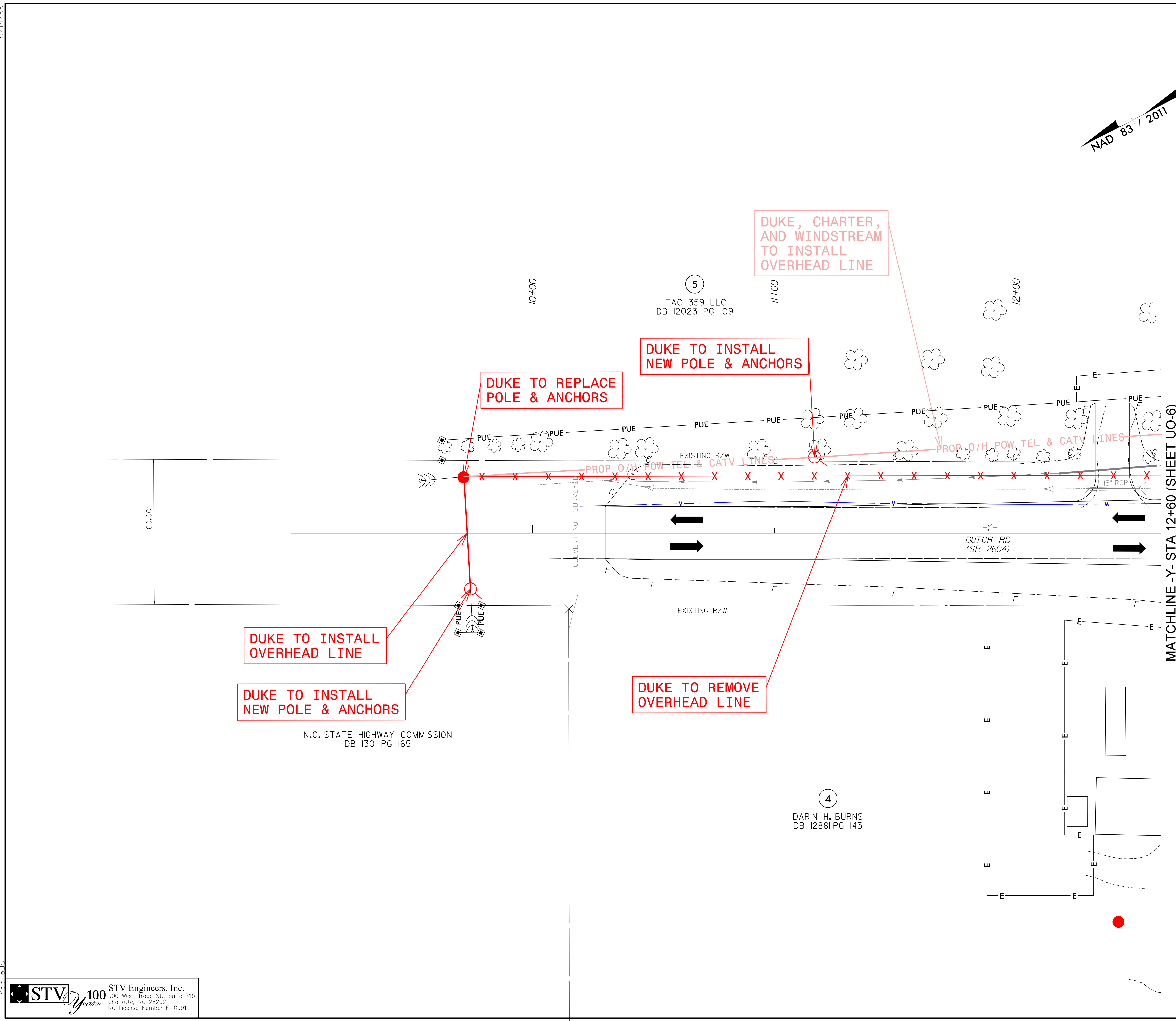
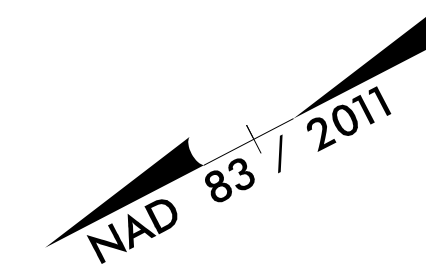
DUKE TO INSTALL OVERHEAD LINE

5/14/99

3/1/2002 10:00 AM Project: UB0 - Sheets: B5813.rdw, psh07\_U0-7.dgn

### UTILITIES BY OTHERS

NOTE:  
 ALL UTILITY WORK SHOWN ON THIS SHEET WILL BE DONE BY OTHERS. NO PAYMENT WILL BE MADE TO THE CONTRACTOR FOR UTILITY WORK SHOWN ON THIS SHEET.



DUKE, CHARTER,  
 AND WINDSTREAM  
 TO INSTALL  
 OVERHEAD LINE

DUKE TO INSTALL  
 NEW POLE & ANCHORS

DUKE TO REPLACE  
 POLE & ANCHORS

DUKE TO INSTALL  
 OVERHEAD LINE

DUKE TO INSTALL  
 NEW POLE & ANCHORS

DUKE TO REMOVE  
 OVERHEAD LINE

5  
 ITAC 359 LLC  
 DB 12023 PG 109

4  
 DARIN H. BURNS  
 DB 12881 PG 143

N.C. STATE HIGHWAY COMMISSION  
 DB 130 PG 165

MATCHLINE -Y- STA 12+60 (SHEET UO-6)

60.00'

CULVERT NOT SURVEYED

-Y-  
 DUTCH RD  
 (SR 2604)

EXISTING R/W

EXISTING R/W

15' RCP

5/14/99

3/1/2002  
 \Engineers\p\B001\Proj\UB0\_Sheets\B5813.rdy\_psh08\_U0-8.dgn