



STATE OF NORTH CAROLINA
DEPARTMENT OF TRANSPORTATION

ROY COOPER
GOVERNOR

J. ERIC BOYETTE
SECRETARY

December 14, 2021

Addendum No. 3

RE: Contract # C204397

WBS # 34400.3.4

STATE FUNDED

Rutherford County (R-2233BB)

US-221 SOUTH OF US-74 BUS (CHARLOTTE RD) TO NORTH OF SR-1366 (ROPER LOOP RD).

December 21, 2021 Letting

To Whom It May Concern:

Reference is made to the plans and proposal form furnished to you on this project.

The following revisions have been made to the proposal:

| Page No. | Revisions |
|---------------------------|---|
| Proposal Cover | Note added that reads "Includes Addendum No. 3 Dated 12-14-2021" |
| G-6 | Project Special Provision entitled SPECIALTY ITEMS was revised to show new signing line item numbers 402 and 403. |
| SN-02 thru SN-08 (New) | Project Unit Special Provisions entitled RRFB (RECTANGULAR RAPID FLASHING BEACON) SOLAR POWERED and ADVANCE WARNING FLASHING BEACONS were added to the Signing Unit Special Provisions. |

Please void the above listed existing Pages in your proposal and staple the revised Pages thereto.

Staple New Pages SN-02 thru SN-08 after Page SN-01 in your proposal.

On the item sheets the following pay item revisions have been made:

| <u>Item</u> | <u>Description</u> | <u>Old Quantity</u> | <u>New Quantity</u> |
|----------------------|---------------------------|----------------------------|----------------------------|
| 0402-4360000000-N-SP | RRFB ASSEMBLY | NEW ITEM | 4 EA |

Mailing Address:
NC DEPARTMENT OF TRANSPORTATION
CONTRACT STANDARDS AND DEVELOPMENT
1591 MAIL SERVICE CENTER
RALEIGH, NC 27699-1591

Telephone: (919) 707-6900
Fax: (919) 250-4127
Customer Service: 1-877-368-4968

Location:
1020 BIRCH RIDGE DR.
RALEIGH, NC 27610

Website: www.ncdot.gov

0403-4360000000-N-
SP

ADVANCE WARNING
FLASHING BEACON
ASSEMBLY

NEW ITEM

3 EA

The Contractor's bid must include these pay item revisions.

The electronic bidding file has been updated to reflect these revisions. Please download the Addendum File and follow the instructions for applying the addendum. Bid Express will not accept your bid unless the addendum has been applied.

The contract will be prepared accordingly.

Sincerely,

DocuSigned by:

F81B6038A47A442...

Ronald E. Davenport, Jr., PE
State Contract Officer

RED/cms

Attachments

cc: Mr. Lamar Sylvester, PE
Mr. Mark Gibbs, PE
Ms. Lori Strickland
Mr. Boyd Tharrington, PE
Mr. Jon Weathersbee, PE
Mr. Ken Kennedy, PE
Project File (2)

Mr. Forrest Dungan, PE
Ms. Jaci Kincaid
Mr. Kyle Kempf
Mr. Mike Gwyn
Ms. Penny Higgins

STATE OF NORTH CAROLINA
DEPARTMENT OF TRANSPORTATION
RALEIGH, N.C.

PROPOSAL

INCLUDES ADDENDUM No. 3 DATED 12-14-2021

DATE AND TIME OF BID OPENING: **DECEMBER 21, 2021 AT 2:00 PM**

CONTRACT ID C204397
WBS 34400.3.4

FEDERAL-AID NO. STATE FUNDED

COUNTY RUTHERFORD

T.I.P. NO. R-2233BB

MILES 5.164

ROUTE NO. US 221

LOCATION US-221 SOUTH OF US-74 BUS (CHARLOTTE RD) TO NORTH OF
SR-1366 (ROPER LOOP RD).

TYPE OF WORK GRADING, DRAINAGE, PAVING, SIGNALS, AND STRUCTURES.

NOTICE:

ALL BIDDERS SHALL COMPLY WITH ALL APPLICABLE LAWS REGULATING THE PRACTICE OF GENERAL CONTRACTING AS CONTAINED IN CHAPTER 87 OF THE GENERAL STATUTES OF NORTH CAROLINA WHICH REQUIRES THE BIDDER TO BE LICENSED BY THE N.C. LICENSING BOARD FOR CONTRACTORS WHEN BIDDING ON ANY NON-FEDERAL AID PROJECT WHERE THE BID IS \$30,000 OR MORE, EXCEPT FOR CERTAIN SPECIALTY WORK AS DETERMINED BY THE LICENSING BOARD. BIDDERS SHALL ALSO COMPLY WITH ALL OTHER APPLICABLE LAWS REGULATING THE PRACTICES OF ELECTRICAL, PLUMBING, HEATING AND AIR CONDITIONING AND REFRIGERATION CONTRACTING AS CONTAINED IN CHAPTER 87 OF THE GENERAL STATUTES OF NORTH CAROLINA. NOTWITHSTANDING THESE LIMITATIONS ON BIDDING, THE BIDDER WHO IS AWARDED ANY FEDERAL - AID FUNDED PROJECT SHALL COMPLY WITH CHAPTER 87 OF THE GENERAL STATUTES OF NORTH CAROLINA FOR LICENSING REQUIREMENTS WITHIN 60 CALENDAR DAYS OF BID OPENING.

BIDS WILL BE RECEIVED AS SHOWN BELOW:

THIS IS A ROADWAY & STRUCTURE PROPOSAL

5% BID BOND OR BID DEPOSIT REQUIRED

MAJOR CONTRACT ITEMS:

(2-19-02)

104

SP1 G28

The following listed items are the major contract items for this contract (see Article 104-5 of the 2018 Standard Specifications):

| Line # | Description |
|---------------|-------------------------|
| 6 | Unclassified Excavation |

SPECIALTY ITEMS:

(7-1-95)(Rev. 7-20-21)

108-6

SP1 G37

Items listed below will be the specialty items for this contract (see Article 108-6 of the 2018 Standard Specifications).

| Line # | Description |
|---------------------------|-----------------------------|
| 131-148 | Guardrail |
| 149-153, 401 | Fencing |
| 158-180, 226-227, 402-403 | Signing |
| 203-205, 208, 219-223 | Long-Life Pavement Markings |
| 206-207 | Removable Tape |
| 224-225 | Permanent Pavement Markers |
| 228-258, 392-397 | Utility Construction |
| 259-297 | Erosion Control |
| 298-341 | Signals/ITS System |
| 365-367 | Drilled Piers |

FUEL PRICE ADJUSTMENT:

(11-15-05) (Rev. 7-20-21)

109-8

SP1 G43

Revise the 2018 Standard Specifications as follows:

Page 1-87, Article 109-8, Fuel Price Adjustments, add the following:

The base index price for DIESEL #2 FUEL is \$ **2.3102** per gallon. Where any of the following are included as pay items in the contract, they will be eligible for fuel price adjustment.

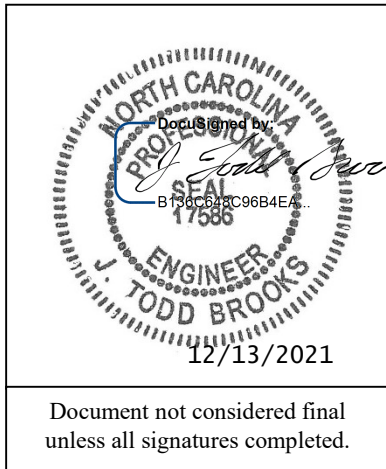
The pay items and the fuel factor used in calculating adjustments to be made will be as follows:

| Description | Units | Fuel Usage Factor Diesel |
|--|--------------|-------------------------------------|
| Unclassified Excavation | Gal/CY | 0.29 |
| Borrow Excavation | Gal/CY | 0.29 |
| Class IV Subgrade Stabilization | Gal/Ton | 0.55 |
| Aggregate Base Course | Gal/Ton | 0.55 |
| Sub-Ballast | Gal/Ton | 0.55 |
| Asphalt Concrete Base Course, Type _____ | Gal/Ton | 0.90 or 2.90 |
| Asphalt Concrete Intermediate Course, Type _____ | Gal/Ton | 0.90 or 2.90 |

TIP # R-2233BB

SN-02

Rutherford County



Document not considered final
unless all signatures completed.

Prepared By:

**Dewberry**

2610 Wycliff Road, Suite 410
Raleigh, NC 27607 • NCBEES # F-0929

RRFB (RECTANGULAR RAPID FLASHING BEACON) SOLAR POWERED

DESCRIPTION

Furnish and install rectangular rapid flashing beacon (RRFB) that is solar powered, pedestrian activated and equipped with a crosswalk illuminator. Ensure the RRFB assembly consists of two rapidly flashing rectangular-shaped yellow indications, pushbutton, illuminator, solar panel, battery, controller assembly, wireless communications and all necessary hardware. Furnish install pedestals and pedestal foundations to support the RRFB assembly and associated signs. Ensure multiple RRFB units at a given crosswalk are synchronized. Ensure RRFB units are synchronized with corresponding advanced warning flashing beacons.

Ensure the RRFB meets the physical display and operational requirements in the interim approval for RRFB by the Federal Highway Administration; see requirements at:

https://mutcd.fhwa.dot.gov/resources/interim_approval/ia21/ia21.pdf

Ensure the RRFB meets the full requirements as noted in the subsequent Official Interpretations issued by the Federal Highway Administration, which are listed on the following webpage:

<https://mutcd.fhwa.dot.gov/resources/interpretations/index.htm>

MATERIALS

Solar-Powered RRFB Assembly

Provide two rapid flashing yellow indications that are aligned horizontally in a single housing with a space between both indications of a minimum of 7" from inside edge of one indication to inside edge of the other indication. Ensure each indication is rectangular-shaped and has minimum dimensions of 5" wide by 2" high. Provide a Light Emitting Diode (LED) array for each indication. Provide Independent Laboratory Certification and test results for each indication facing motorists as evidence that the light intensity meets the Class 1 requirements for of the Society of Automotive Engineers (SAE) standard J595 (Directional Flashing Optical Warning Devices for Authorized Emergency, Maintenance, and Service

TIP # R-2233BB

SN-03

Rutherford County

Vehicles) dated January 2005.

Provide an aluminum housing that can be attached to a 4.5" OD pedestal shaft. Powder coat the housing with an electrostatically-applied, fused- polyester paint in highway yellow (Federal Standard 595C, Color Chip Number 13538) a minimum of 2.5 to 3.5 mils thick. Ensure the housing does not project beyond the outside edges of a W11-2 sign mounted above it. Ensure the two indications are installed into the housing assembly to face in the direction of the approaching vehicular traffic. Provide two additional identical indications for the motorists in a similar constructed housing that can be attached on the opposite side of the pole (i.e., back-to-back).

Provide the two yellow indications facing motorists to flash in a rapidly alternating "wig-wag" flashing sequence (left light on, then right light on). Ensure 75 periods of flashing per minute. Ensure that the left and right indications of the RRFB unit operate using the flashing sequence and illumination durations required by MUTCD Interim Approval 21 (IA-21), dated March 20, 2018, as corrected on March 21, 2018. Do not provide RRFB units programmed to flash according to the superseded MUTCD IA-11. Ensure the indications have approximately equal periods of rapid pulsing light emissions and dark operation. Ensure flash rates are not at frequencies between 5 and 30 flashes per second to avoid flash-induced seizures. Provide a flashing yellow LED indication on the end of the housing (i.e., a pilot light) to provide notification of activation and operation of the device to pedestrians in the crosswalk.

During operation, ensure the RRFB remains dark until a pedestrian actuation occurs and then returns to dark at a programmed time after the pedestrian activation. Provide RRFB units that automatically dim based upon ambient light conditions.

Ensure the system is operated by remote control radio signal and solar power. Ensure the RRFB and corresponding advance warning flashing beacons are synchronized with each other. Provide wireless communication equipment to ensure all RRFBs associated at a given crosswalk simultaneously start operation of their alternating rapid flashing indications when activated and cease operation simultaneously. Provide a means to prevent interference with other systems utilizing similar communications equipment.

Provide a 12VDC sealed gel, sealed lead acid, or absorption glass mat battery with sufficient capacity for 5 days of 3 hours of continuous operation with no additional charge from solar panel. Ensure the battery is located in a moisture and corrosion resistant enclosure. Provide a solar panel with a minimum array-to-load ratio of 1.2 and charging circuitry for the battery. Provide a solar sizing report that shows the system loss of load probability is 0% for the entire year for Rutherfordton, North Carolina. Provide mounting hardware to allow solar panel to be tilted at least 45 degrees from horizontal and panned 360 degrees.

Provide an LED floodlight/beam light combination with each RRFB assembly designed to illuminate the half of the crosswalk adjacent to the assembly concurrently with the flashing of the RRFB indications. Provide an LED floodlight/beam light unit that when paired with paired with another unit of the same manufacturer and model at opposite end of the crosswalk will provide continuous illumination of the crosswalk from one end to the other. Use TAPCO Safewalk Crosswalk Illuminator or an NCDOT-approved equivalent. Ensure the flood light illuminates the approach area of the crosswalk and the beam light illuminates the middle of the crosswalk. Ensure both the flood light and beam light activation is synchronized with the actuation of the RRFB's. Ensure that the light fades on and off upon actuation. Ensure the

TIP # R-2233BB

SN-04

Rutherford County

floodlight/beam light meets or exceeds the 20 LUX minimum recommendation per the Federal Highway Administrations *Informational Report on Lighting Design for Midblock Crosswalks*.

Provide stainless steel fasteners for all items exposed to the weather. For fasteners protected from the weather, provide fasteners fabricated from stainless steel or other corrosion-resistant materials.

Ensure assemblies provide protection from environmental conditions and accidental contact equivalent to a NEMA 3R-rated enclosure. Ensure all components operate properly within the following limits unless otherwise noted:

- Humidity: 5% to 95%, non-condensing
- Ambient Temperature: -30.0°F to +165°F
- Shock - NEMA TS2-2003, Section 2.1.10
- Vibration - NEMA TS2-2003, Section 2.1.9

Pedestal, Base, and Foundation

Furnish Type II normal-duty pedestals that are listed on the NCDOT ITS and Signals Qualified Products List (QPL) and that comply with Article 1098-14 of the Standard Specifications except as follows:

- Provide a pedestal shaft that is 16 feet long.
- Provide a Type III pedestal foundation. Type II pedestal foundations and screw-in helical foundation anchor assemblies are prohibited.
- Furnish each pedestal with a compatible pedestal cap furnished by the manufacturer of the pedestal.

Signs

Furnish Type E signs for installation on each pedestal as shown on the Signing Plans. Provide all hardware, brackets and fasteners necessary to mount the signs securely but non-intrusively to the shaft of the Type II pedestals. Provide stainless steel fasteners and banding hardware.

Pedestrian Pushbutton

Provide a pedestrian pushbutton with each RRFB assembly to activate the flashing indications and crosswalk illuminator. Pushbutton must be listed on the NCDOT ITS and Signals Qualified Products List (QPL).

CONSTRUCTION METHODS

Install pedestal and foundation in accordance with Article 1743-3 of the *Standard Specifications*. Locate the pedestal so that the horizontal clearance from adjacent pavement edge to the near edge of the attached warning sign will be no less than 6 feet, with 12 feet preferred, unless the pedestal is positioned behind guardrail. If installed behind guardrail, position pedestal so that edge of warning sign does not protrude past the face of guardrail.

TIP # R-2233BB

SN-05

Rutherford County

Locate the pedestal in so that the pedestrian pushbutton will be no more than 18 inches from the edge of the multi-use trail when installed on the pedestal shaft. Obtain the Engineer's approval of pedestal location prior to constructing the pedestal foundation.

Mount the warning signs on the pedestal shaft in accordance with the Plans using Department-approved mounting hardware and fasteners. Provide space between the W11-15P Trail Xing plaque and the W16-7P downward diagonal arrow plaque for mounting the RRFB unit.

For each approach to the RRFB location, install two RRFB assemblies at the crosswalk, one on the right-hand side of the roadway and one on the left-hand side of the roadway as shown on the Plans. Install the RRFB on the same support as the associated W11-15 (Bicycle/Pedestrian Crossing), W11-15P (TRAIL X-ING)) and W16-7P (Downward Diagonal Arrow) warning signs and plaques. Do not install an RRFB independent of the crossing warning signs.

Ensure that the outside edges of the RRFB indications, including any housings, do not project beyond the outside edges of the W11-15 sign. Locate the RRFB between the bottom of the W11-15P plaque and the top of the supplemental W16-7P plaque, rather than 12 inches above or below the sign assembly.

Install the pushbutton assembly below the RRFB and W16-7p plaque. Mount the pushbutton at a minimum height of 3.5 feet but no higher than 4.0 feet above the adjacent sidewalk/multi-use trail. Align the front face of the pedestrian pushbutton assembly parallel with the crosswalk and perpendicular to oncoming vehicular traffic. The distance from the pushbutton to the near edge of the sidewalk/multi-use trail must be no greater than 18 inches. Mount a "PUSH BUTTON TO TURN ON WARNING LIGHTS" (R10-25) sign adjacent to or integral with each pedestrian pushbutton.

Obtain flashing duration to be programmed into the RRFB from the Engineer.

Install the floodlight/ beam light combination unit on the pedestal in accordance with the manufacturer's instructions to illuminate the crosswalk when the RRFB is actuated.

WARRANTY

Provide in writing a minimum of one-year warranty from the date of the RRFB system installation for all system components. Provide a prorated five-year warranty for the battery. Warrant the solar panel for 20 years. All shipping cost for warranty repairs shall be paid by the vendor.

MEASUREMENT AND PAYMENT

RRFB Assembly will be measured and paid as the actual number of RRFB assemblies furnished, installed, and accepted.

No measurement will be made of rapidly flashing rectangular-shaped yellow indications, crosswalk illuminator, solar panel, battery, controller assembly, pedestals, pedestal foundations, all necessary hardware, programming and testing, and warranties as these items will be considered incidental to furnishing and installing RRFB assemblies.

Installation of Department-furnished warning signs and pushbutton signs will be measured and paid for in accordance with Article 904-4 of the *Standard Specifications*.

TIP # R-2233BB

SN-06

Rutherford County

Payment will be made under:

Pay Item**Pay Unit**

RRFB Assembly

Each

ADVANCE WARNING FLASHING BEACONS**DESCRIPTION**

Furnish and install advance warning flashing beacons that are solar powered to supplement bicycle/pedestrian crossing warning signs installed in advance of trail crossings with RRFBs. Provide advance warning flashing beacons that operate concurrently with corresponding downstream RRFBs when actuated and which communicate wirelessly with the RRFBs. Furnish install pedestals and pedestal foundations to support the beacons and associated signs.

MATERIALS

Furnish advance warning flashing beacon assemblies that consist of a pair of 12-inch signal head sections, solar panel, battery, controller assembly, wireless communications and all necessary cabling and mounting hardware. Provide advance warning flashing beacons that comply with MUTCD Chapter 4L.

Provide 12-inch circular yellow signal LED signal modules that comply with “Signal Heads” section of the Signals and Intelligent Transportation Systems Project Special Provisions and that are listed on the ITS and Signals QPL. Provide two separate, single-section aluminum signal heads with aluminum visors. Paint the signal housing and the exterior of the visor yellow and paint the interior of the visor black in accordance with “Signal Heads” section of the Signals and Intelligent Transportation Systems Project Special Provisions.

Provide the two circular yellow indications arranged vertically facing motorists to flash in a alternating “wig-wag” flashing sequence (top light on, then bottom light on). Provide flashing rate and illuminated periods that comply with MUTCD Section 4L.01.

Provide side of pole mounting assemblies with framework and all other hardware necessary to make complete, watertight connections of the signal heads to the pedestals. Fabricate the mounting assemblies and frames from aluminum with all necessary hardware, screws, washers, etc. to be stainless steel. Provide mounting fittings that match the positive locking device on the signal head with the serrations integrally cast into the brackets. Provide upper and lower pole plates that have a 1 ¼-inch vertical conduit entrance hubs with the hubs capped on the lower plate and 1½-inch horizontal hubs. Ensure that the assemblies provide rigid attachments to pedestals so as to allow no twisting or swaying of the signal heads. Ensure that all raceways are free of sharp edges and protrusions, and can accommodate signal conductors.

During operation, ensure the beacons remain dark until a pedestrian actuation occurs at the corresponding downstream RRFB and then returns to dark at a programmed time after the pedestrian activation. Ensure the system is operated by remote control radio signal and solar power. Ensure the advanced warning flashing beacons and corresponding RRFB are synchronized with each other and flash concurrently. Provide wireless communication

TIP # R-2233BB

SN-07

Rutherford County

equipment to ensure all advance warning flashing beacons and RRFBs associated at a given crosswalk simultaneously start operation of their flashing indications when activated by pedestrian pushbutton actuation and cease operation simultaneously. Provide a means to prevent interference with other systems utilizing similar communications equipment.

Provide a 12VDC sealed gel, sealed lead acid, or absorption glass mat battery with sufficient capacity for 5 days of 3 hours of continuous operation with no additional charge from solar panel. Ensure the battery is located in a moisture and corrosion resistant enclosure. Provide a solar panel with a minimum array-to-load ratio of 1.2 and charging circuitry for the battery. Provide a solar sizing report that shows the system loss of load probability is 0% for the entire year for Rutherfordton, North Carolina. Provide mounting hardware to allow solar panel to be tilted at least 45 degrees from horizontal and panned 360 degrees.

Provide stainless steel fasteners for all items exposed to the weather. For fasteners protected from the weather, provide fasteners fabricated from stainless steel or other corrosion-resistant materials.

Ensure assemblies provide protection from environmental conditions and accidental contact equivalent to a NEMA 3R-rated enclosure. Ensure all components operate properly within the following limits unless otherwise noted:

- Humidity: 5% to 95%, non-condensing
- Ambient Temperature: -30.0°F to +165°F
- Shock - NEMA TS2-2003, Section 2.1.10
- Vibration - NEMA TS2-2003, Section 2.1.9

Pedestal, Base, and Foundation

Furnish Type II normal-duty pedestals that are listed on the NCDOT ITS and Signals Qualified Products List (QPL) and that comply with Article 1098-14 of the *Standard Specifications* except as follows:

- Provide a pedestal shaft that is 16 feet long.
- Provide a Type III pedestal foundation. Type II pedestal foundations and screw-in helical foundation anchor assemblies are prohibited.
- Furnish each pedestal with a compatible pedestal cap furnished by the manufacturer of the pedestal.

Signage

Furnish Type E signs for installation on each pedestal as shown on the Signing Plans. Provide all hardware, brackets and fasteners necessary to mount the signs securely but non-intrusively to the shaft of the Type II pedestals. Provide stainless steel fasteners and banding hardware.

TIP # R-2233BB

SN-08

Rutherford County

CONSTRUCTION METHODS

Install pedestal and foundation in accordance with Article 1743-3 of the *Standard Specifications*. Locate the pedestal so that the horizontal clearance from adjacent pavement edge to the near edge of the attached warning sign will be no less than 6 feet, with 12 feet preferred, unless the pedestal is positioned behind guardrail. If installed behind guardrail, position pedestal so that edge of warning sign does not protrude past the face of guardrail. Obtain the Engineer's approval of pedestal location prior to constructing the pedestal foundation.

Mount the warning signs on the pedestal shaft in accordance with the Plans using Department-approved mounting hardware and fasteners. Provide space between the W11-15 Bicycle/Pedestrian warning sign and the W11-15P Trail Xing plaque for mounting the bottom flashing beacon.

Install the flashing beacon assembly on the same support as the associated W11-15 (Bicycle/Pedestrian Crossing), W11-15P (TRAIL X-ING)) and W16-9P (AHEAD) warning signs and plaques. Mount the flashing beacons 12 inches above and below the W11-15 sign. Provide 12 inches between the bottom beacon and the W11-15P sign.

The flashing duration to be programmed to match the duration programmed into the RRFB from the Engineer.

WARRANTY

Provide in writing a minimum of one-year warranty from the date of the system installation for all system components. Provide a prorated five-year warranty for the battery. Warrant the solar panel for 20 years. All shipping cost for warranty repairs shall be paid by the vendor.

MEASUREMENT AND PAYMENT

Advance Warning Flashing Beacon Assembly will be measured and paid as the actual number of advance warning beacon assemblies furnished, installed, and accepted.

No measurement will be made of signal heads, solar panel, battery, controller assembly, pedestal, pedestal foundation, all necessary hardware, programming and testing, and warranties as these items will be considered incidental to furnishing and installing advance warning flashing beacon assemblies.

Installation of Department-furnished warning signs and pushbutton signs will be measured and paid for in accordance with Article 904-4 of the *Standard Specifications*.

Payment will be made under:

| Pay Item | Pay Unit |
|--|-----------------|
| Advance Warning Flashing Beacon Assembly | Each |

County : Rutherford

| Line # | Item Number | Sec # | Description | Quantity | Unit Cost | Amount |
|----------------------|--------------|-------|--|-----------------|-----------|--------|
| ROADWAY ITEMS | | | | | | |
| 0001 | 0000100000-N | 800 | MOBILIZATION | Lump Sum | L.S. | |
| 0002 | 0000400000-N | 801 | CONSTRUCTION SURVEYING | Lump Sum | L.S. | |
| 0003 | 0001000000-E | 200 | CLEARING & GRUBBING .. ACRE(S) | Lump Sum | L.S. | |
| 0004 | 0008000000-E | 200 | SUPPLEMENTARY CLEARING & GRUB- BING | 5 ACR | | |
| 0005 | 0015000000-N | 205 | SEALING ABANDONED WELLS | 3 EA | | |
| 0006 | 0022000000-E | 225 | UNCLASSIFIED EXCAVATION | 2,860,000 CY | | |
| 0007 | 0028000000-N | SP | TYPE I STANDARD APPROACH FILL STATION ***** (20+88.94 -Y19-) | Lump Sum | L.S. | |
| 0008 | 0028000000-N | SP | TYPE I STANDARD APPROACH FILL STATION ***** (26+65.52 -Y3-) | Lump Sum | L.S. | |
| 0009 | 0029000000-N | SP | TYPE III REINFORCED APPROACH FILL, STATION ***** (774+41.49 -L3- LT) | Lump Sum | L.S. | |
| 0010 | 0029000000-N | SP | TYPE III REINFORCED APPROACH FILL, STATION ***** (774+41.49 -L3- RT) | Lump Sum | L.S. | |
| 0011 | 0036000000-E | 225 | UNDERCUT EXCAVATION | 13,500 CY | | |
| 0012 | 0134000000-E | 240 | DRAINAGE DITCH EXCAVATION | 25,650 CY | | |
| 0013 | 0141000000-E | 240 | BERM DITCH CONSTRUCTION | 1,810 LF | | |
| 0014 | 0156000000-E | 250 | REMOVAL OF EXISTING ASPHALT PAVEMENT | 47,600 SY | | |
| 0015 | 0163000000-E | 250 | REMOVAL OF EXISTING CONCRETE PAVEMENT | 3,400 SY | | |
| 0016 | 0177000000-E | 250 | BREAKING OF EXISTING ASPHALT PAVEMENT | 7,500 SY | | |
| 0017 | 0192000000-N | 260 | PROOF ROLLING | 100 HR | | |
| 0018 | 0195000000-E | 265 | SELECT GRANULAR MATERIAL | 11,500 CY | | |

County : Rutherford

| Line # | Item Number | Sec # | Description | Quantity | Unit Cost | Amount |
|--------|--------------|-------|--|--------------|-----------|--------|
| 0019 | 0196000000-E | 270 | GEOTEXTILE FOR SOIL STABILIZATION | 53,500 SY | | |
| 0020 | 0255000000-E | SP | GENERIC GRADING ITEM HAULING AND DISPOSAL OF PETRO- LEUM CONTAMINATED SOIL | 100 TON | | |
| 0021 | 0318000000-E | 300 | FOUNDATION CONDITIONING MATE- RIAL, MINOR STRUCTURES | 8,218 TON | | |
| 0022 | 0320000000-E | 300 | FOUNDATION CONDITIONING GEO- TEXTILE | 25,834 SY | | |
| 0023 | 0335200000-E | 305 | 15" DRAINAGE PIPE | 2,484 LF | | |
| 0024 | 0335300000-E | 305 | 18" DRAINAGE PIPE | 1,796 LF | | |
| 0025 | 0335400000-E | 305 | 24" DRAINAGE PIPE | 1,328 LF | | |
| 0026 | 0335500000-E | 305 | 30" DRAINAGE PIPE | 1,036 LF | | |
| 0027 | 0335600000-E | 305 | 36" DRAINAGE PIPE | 264 LF | | |
| 0028 | 0335700000-E | 305 | 42" DRAINAGE PIPE | 32 LF | | |
| 0029 | 0354000000-E | 310 | **** RC PIPE CULVERTS, CLASS ***** (54", V) | 352 LF | | |
| 0030 | 0366000000-E | 310 | 15" RC PIPE CULVERTS, CLASS III | 14,496 LF | | |
| 0031 | 0372000000-E | 310 | 18" RC PIPE CULVERTS, CLASS III | 6,076 LF | | |
| 0032 | 0378000000-E | 310 | 24" RC PIPE CULVERTS, CLASS III | 4,800 LF | | |
| 0033 | 0384000000-E | 310 | 30" RC PIPE CULVERTS, CLASS III | 3,316 LF | | |
| 0034 | 0390000000-E | 310 | 36" RC PIPE CULVERTS, CLASS III | 1,700 LF | | |
| 0035 | 0396000000-E | 310 | 42" RC PIPE CULVERTS, CLASS III | 1,256 LF | | |

County : Rutherford

| Line # | Item Number | Sec # | Description | Quantity | Unit Cost | Amount |
|--------|--------------|-------|---|----------|-----------|--------|
| 0036 | 0402000000-E | 310 | 48" RC PIPE CULVERTS, CLASS III | 544 | LF | |
| 0037 | 0408000000-E | 310 | 54" RC PIPE CULVERTS, CLASS III | 836 | LF | |
| 0038 | 0426000000-E | 310 | 72" RC PIPE CULVERTS, CLASS III | 24 | LF | |
| 0039 | 0448300000-E | 310 | 18" RC PIPE CULVERTS, CLASS IV | 172 | LF | |
| 0040 | 0448500000-E | 310 | 30" RC PIPE CULVERTS, CLASS IV | 272 | LF | |
| 0041 | 0448600000-E | 310 | 36" RC PIPE CULVERTS, CLASS IV | 36 | LF | |
| 0042 | 0536000000-E | 310 | ***" HDPE PIPE CULVERTS (8") | 44 | LF | |
| 0043 | 0576000000-E | 310 | *** CS PIPE CULVERTS, ***** THICK (36", 0.079") | 672 | LF | |
| 0044 | 0576000000-E | 310 | *** CS PIPE CULVERTS, ***** THICK (42", 0.109") | 588 | LF | |
| 0045 | 0576000000-E | 310 | *** CS PIPE CULVERTS, ***** THICK (60", 0.138") | 56 | LF | |
| 0046 | 0582000000-E | 310 | 15" CS PIPE CULVERTS, 0.064" THICK | 2,012 | LF | |
| 0047 | 0588000000-E | 310 | 18" CS PIPE CULVERTS, 0.064" THICK | 2,360 | LF | |
| 0048 | 0594000000-E | 310 | 24" CS PIPE CULVERTS, 0.064" THICK | 784 | LF | |
| 0049 | 0600000000-E | 310 | 30" CS PIPE CULVERTS, 0.079" THICK | 648 | LF | |
| 0050 | 0636000000-E | 310 | *** CS PIPE ELBOWS, ***** THICK (15", 0.064") | 16 | EA | |
| 0051 | 0636000000-E | 310 | *** CS PIPE ELBOWS, ***** THICK (18". 0.064") | 14 | EA | |

County : Rutherford

| Line # | Item Number | Sec # | Description | Quantity | Unit Cost | Amount |
|--------|--------------|-------|---|---------------|-----------|--------|
| 0052 | 0973100000-E | 330 | *** WELDED STEEL PIPE, ***** THICK, GRADE B IN SOIL (42", 0.625") | 276 LF | | |
| 0053 | 0973100000-E | 330 | *** WELDED STEEL PIPE, ***** THICK, GRADE B IN SOIL (66", 0.875") | 122 LF | | |
| 0054 | 0973300000-E | 330 | *** WELDED STEEL PIPE, ***** THICK, GRADE B NOT IN SOIL (36", 0.500") | 346 LF | | |
| 0055 | 0995000000-E | 340 | PIPE REMOVAL | 4,702 LF | | |
| 0056 | 0996000000-N | 350 | PIPE CLEAN OUT | 4 EA | | |
| 0057 | 1000000000-E | 462 | 6" SLOPE PROTECTION | 310 SY | | |
| 0058 | 1011000000-N | 500 | FINE GRADING | Lump Sum | L.S. | |
| 0059 | 1044000000-E | 501 | LIME TREATED SOIL (SLURRY METHOD) | 184,940 SY | | |
| 0060 | 1066000000-E | 501 | LIME FOR LIME TREATED SOIL | 2,220 TON | | |
| 0061 | 1099500000-E | 505 | SHALLOW UNDERCUT | 15,000 CY | | |
| 0062 | 1099700000-E | 505 | CLASS IV SUBGRADE STABILIZA- TION | 39,800 TON | | |
| 0063 | 1110000000-E | 510 | STABILIZER AGGREGATE | 1,500 TON | | |
| 0064 | 1115000000-E | SP | GEOTEXTILE FOR PAVEMENT STA- BILIZATION | 129,200 SY | | |
| 0065 | 1121000000-E | 520 | AGGREGATE BASE COURSE | 92,300 TON | | |
| 0066 | 1176000000-E | 542 | SOIL CEMENT BASE | 184,940 SY | | |
| 0067 | 1187000000-E | 542 | PORTLAND CEMENT FOR SOIL CE- MENT BASE | 5,179 TON | | |
| 0068 | 1209000000-E | 543 | ASPHALT CURING SEAL | 55,490 GAL | | |
| 0069 | 1220000000-E | 545 | INCIDENTAL STONE BASE | 10,000 TON | | |

County : Rutherford

| Line # | Item Number | Sec # | Description | Quantity | Unit Cost | Amount |
|--------|--------------|-------|--|----------|-----------|--------|
| 0070 | 1231000000-E | 560 | SHOULDER BORROW | 38,000 | | CY |
| 0071 | 1275000000-E | 600 | PRIME COAT | 180 | | GAL |
| 0072 | 1297000000-E | 607 | MILLING ASPHALT PAVEMENT, **** DEPTH (1-1/2") | 6,870 | | SY |
| 0073 | 1308000000-E | 607 | MILLING ASPHALT PAVEMENT, **** TO ***** (0" TO 3") | 6,200 | | SY |
| 0074 | 1330000000-E | 607 | INCIDENTAL MILLING | 3,450 | | SY |
| 0075 | 1491000000-E | 610 | ASPHALT CONC BASE COURSE, TYPE B25.0C | 28,717 | | TON |
| 0076 | 1503000000-E | 610 | ASPHALT CONC INTERMEDIATE COURSE, TYPE I19.0C | 43,600 | | TON |
| 0077 | 1519000000-E | 610 | ASPHALT CONC SURFACE COURSE, TYPE S9.5B | 22,774 | | TON |
| 0078 | 1523000000-E | 610 | ASPHALT CONC SURFACE COURSE, TYPE S9.5C | 34,220 | | TON |
| 0079 | 1575000000-E | 620 | ASPHALT BINDER FOR PLANT MIX | 6,960 | | TON |
| 0080 | 1693000000-E | 654 | ASPHALT PLANT MIX, PAVEMENT REPAIR | 1,000 | | TON |
| 0081 | 1840000000-E | 665 | MILLED RUMBLE STRIPS (ASPHALT CONCRETE) | 92,000 | | LF |
| 0082 | 1891000000-E | SP | GENERIC PAVING ITEM 7" CONCRETE TRUCK APRON | 590 | | SY |
| 0083 | 2000000000-N | 806 | RIGHT-OF-WAY MARKERS | 575 | | EA |
| 0084 | 2022000000-E | 815 | SUBDRAIN EXCAVATION | 1,344 | | CY |
| 0085 | 2026000000-E | 815 | GEOTEXTILE FOR SUBSURFACE DRAINS | 2,000 | | SY |
| 0086 | 2033000000-E | 815 | SUBDRAIN FINE AGGREGATE | 336 | | CY |
| 0087 | 2036000000-E | 815 | SUBDRAIN COARSE AGGREGATE | 336 | | CY |

County : Rutherford

| Line # | Item Number | Sec # | Description | Quantity | Unit Cost | Amount |
|--------|--------------|-------|---|--------------|-----------|--------|
| 0088 | 2044000000-E | 815 | 6" PERFORATED SUBDRAIN PIPE | 4,000 LF | | |
| 0089 | 2070000000-N | 815 | SUBDRAIN PIPE OUTLET | 8 EA | | |
| 0090 | 2077000000-E | 815 | 6" OUTLET PIPE | 48 LF | | |
| 0091 | 2099000000-E | 816 | SHOULDER DRAIN | 20,800 LF | | |
| 0092 | 2110000000-E | 816 | 4" SHOULDER DRAIN PIPE | 20,832 LF | | |
| 0093 | 2121000000-E | 816 | 4" OUTLET PIPE FOR SHOULDER DRAINS | 2,036 LF | | |
| 0094 | 2132000000-N | 816 | CONCRETE PAD FOR SHOULDER DRAIN PIPE OUTLET | 40 EA | | |
| 0095 | 2143000000-E | 818 | BLOTTING SAND | 20 TON | | |
| 0096 | 2209000000-E | 838 | ENDWALLS | 41.4 CY | | |
| 0097 | 2220000000-E | 838 | REINFORCED ENDWALLS | 24.3 CY | | |
| 0098 | 2253000000-E | 840 | PIPE COLLARS | 6.413 CY | | |
| 0099 | 2264000000-E | 840 | PIPE PLUGS | 1.504 CY | | |
| 0100 | 2275000000-E | SP | FLOWABLE FILL | 137 CY | | |
| 0101 | 2286000000-N | 840 | MASONRY DRAINAGE STRUCTURES | 435 EA | | |
| 0102 | 2297000000-E | 840 | MASONRY DRAINAGE STRUCTURES | 24.72 CY | | |
| 0103 | 2308000000-E | 840 | MASONRY DRAINAGE STRUCTURES | 546.7 LF | | |
| 0104 | 2364000000-N | 840 | FRAME WITH TWO GRATES, STD 840.16 | 54 EA | | |
| 0105 | 2364200000-N | 840 | FRAME WITH TWO GRATES, STD 840.20 | 41 EA | | |
| 0106 | 2365000000-N | 840 | FRAME WITH TWO GRATES, STD 840.22 | 172 EA | | |

County : Rutherford

| Line # | Item Number | Sec # | Description | Quantity | Unit Cost | Amount |
|--------|--------------|-------|--|--------------|-----------|--------|
| 0107 | 2366000000-N | 840 | FRAME WITH TWO GRATES, STD 840.24 | 7 EA | | |
| 0108 | 2367000000-N | 840 | FRAME WITH TWO GRATES, STD 840.29 | 1 EA | | |
| 0109 | 2374000000-N | 840 | FRAME WITH GRATE & HOOD, STD 840.03, TYPE ** (E) | 7 EA | | |
| 0110 | 2374000000-N | 840 | FRAME WITH GRATE & HOOD, STD 840.03, TYPE ** (F) | 42 EA | | |
| 0111 | 2374000000-N | 840 | FRAME WITH GRATE & HOOD, STD 840.03, TYPE ** (G) | 31 EA | | |
| 0112 | 2396000000-N | 840 | FRAME WITH COVER, STD 840.54 | 41 EA | | |
| 0113 | 2407000000-N | 840 | STEEL FRAME WITH TWO GRATES, STD 840.37 | 15 EA | | |
| 0114 | 2451000000-N | 852 | CONCRETE TRANSITIONAL SECTION FOR DROP INLET | 34 EA | | |
| 0115 | 2462000000-E | 836 | *** SLUICE GATE (8") | 2 EA | | |
| 0116 | 2473000000-N | SP | GENERIC DRAINAGE ITEM ENERGY DISSIPATOR BASIN | 17 EA | | |
| 0117 | 2535000000-E | 846 | ***X *** CONCRETE CURB (8" X 12") | 230 LF | | |
| 0118 | 2549000000-E | 846 | 2'-6" CONCRETE CURB & GUTTER | 18,400 LF | | |
| 0119 | 2556000000-E | 846 | SHOULDER BERM GUTTER | 5,310 LF | | |
| 0120 | 2577000000-E | 846 | CONCRETE EXPRESSWAY GUTTER | 750 LF | | |
| 0121 | 2591000000-E | 848 | 4" CONCRETE SIDEWALK | 5,480 SY | | |
| 0122 | 2605000000-N | 848 | CONCRETE CURB RAMPS | 6 EA | | |
| 0123 | 2612000000-E | 848 | 6" CONCRETE DRIVEWAY | 560 SY | | |

County : Rutherford

| Line # | Item Number | Sec # | Description | Quantity | Unit Cost | Amount |
|--------|--------------|-------|--|--------------|-----------|--------|
| 0124 | 2619000000-E | 850 | 4" CONCRETE PAVED DITCH | 177 SY | | |
| 0125 | 2647000000-E | 852 | 5" MONOLITHIC CONCRETE ISLANDS (SURFACE MOUNTED) | 8,850 SY | | |
| 0126 | 2655000000-E | 852 | 5" MONOLITHIC CONCRETE ISLANDS (KEYED IN) | 490 SY | | |
| 0127 | 2703000000-E | 854 | CONCRETE BARRIER, TYPE ***** (SINGLE SLOPE) | 655 LF | | |
| 0128 | 2724000000-E | 857 | PRECAST REINFORCED CONCRETE BARRIER, SINGLE FACED | 5,350 LF | | |
| 0129 | 2752000000-E | SP | GENERIC PAVING ITEM 2'-0" MODIFIED VALLEY GUTTER | 360 LF | | |
| 0130 | 2759000000-N | SP | GENERIC PAVING ITEM VERTICAL CONCRETE BARRIER TRANSITION | 2 EA | | |
| 0131 | 3001000000-N | SP | IMPACT ATTENUATOR UNITS, TYPE TL-3 | 2 EA | | |
| 0132 | 3030000000-E | 862 | STEEL BEAM GUARDRAIL | 29,500 LF | | |
| 0133 | 3045000000-E | 862 | STEEL BEAM GUARDRAIL, SHOP CURVED | 1,475 LF | | |
| 0134 | 3150000000-N | 862 | ADDITIONAL GUARDRAIL POSTS | 30 EA | | |
| 0135 | 3195000000-N | 862 | GUARDRAIL END UNITS, TYPE AT-1 | 9 EA | | |
| 0136 | 3210000000-N | 862 | GUARDRAIL END UNITS, TYPE CAT-1 | 23 EA | | |
| 0137 | 3215000000-N | SP | GUARDRAIL ANCHOR UNITS, TYPE III | 4 EA | | |
| 0138 | 3287000000-N | SP | GUARDRAIL END UNITS, TYPE TL-3 | 44 EA | | |
| 0139 | 3288000000-N | SP | GUARDRAIL END UNITS, TYPE TL-2 | 23 EA | | |
| 0140 | 3317000000-N | SP | GUARDRAIL ANCHOR UNITS, TYPE B-77 | 20 EA | | |
| 0141 | 3360000000-E | 863 | REMOVE EXISTING GUARDRAIL | 7,400 LF | | |

County : Rutherford

| Line # | Item Number | Sec # | Description | Quantity | Unit Cost | Amount |
|--------|--------------|-------|--|----------|-----------|--------|
| 0142 | 3380000000-E | 862 | TEMPORARY STEEL BEAM GUARDRAIL | 500 | | LF |
| 0143 | 3389150000-N | SP | TEMPORARY GUARDRAIL END UNITS, TYPE ***** (TL-3) | 2 | | EA |
| 0144 | 3389400000-E | 865 | DOUBLE FACED CABLE GUIDERAIL | 13,200 | | LF |
| 0145 | 3389500000-N | 865 | ADDITIONAL GUIDERAIL POSTS | 10 | | EA |
| 0146 | 3389600000-N | 865 | CABLE GUIDERAIL ANCHOR UNITS | 40 | | EA |
| 0147 | 3435000000-N | SP | GENERIC GUARDRAIL ITEM PERMANENT BOLLARDS | 6 | | EA |
| 0148 | 3435000000-N | SP | GENERIC GUARDRAIL ITEM REMOVABLE BOLLARDS | 3 | | EA |
| 0149 | 3503000000-E | 866 | WOVEN WIRE FENCE, 47" FABRIC | 60,960 | | LF |
| 0150 | 3509000000-E | 866 | 4" TIMBER FENCE POSTS, 7'-6" LONG | 3,730 | | EA |
| 0151 | 3515000000-E | 866 | 5" TIMBER FENCE POSTS, 8'-0" LONG | 1,170 | | EA |
| 0152 | 3565000000-E | 866 | DOUBLE GATES, *** HIGH, *** WIDE, *** OPENING (47", 8', 16') | 1 | | EA |
| 0153 | 3575000000-E | SP | GENERIC FENCING ITEM BIKE AND PEDESTRIAN SAFETY RAIL | 810 | | LF |
| 0154 | 3628000000-E | 876 | RIP RAP, CLASS I | 3,500 | | TON |
| 0155 | 3635000000-E | 876 | RIP RAP, CLASS II | 6,625 | | TON |
| 0156 | 3649000000-E | 876 | RIP RAP, CLASS B | 6,465 | | TON |
| 0157 | 3656000000-E | 876 | GEOTEXTILE FOR DRAINAGE | 44,475 | | SY |
| 0158 | 4048000000-E | 902 | REINFORCED CONCRETE SIGN FOUN- DATIONS | 12 | | CY |
| 0159 | 4054000000-E | 902 | PLAIN CONCRETE SIGN FOUNDA- TIONS | 2 | | CY |

County : Rutherford

| Line # | Item Number | Sec # | Description | Quantity | Unit Cost | Amount |
|--------|--------------|-------|---|-------------|-----------|--------|
| 0160 | 4057000000-E | SP | OVERHEAD FOOTING | 30 CY | | |
| 0161 | 4060000000-E | 903 | SUPPORTS, BREAKAWAY STEEL BEAM | 4,817 LB | | |
| 0162 | 4066000000-E | 903 | SUPPORTS, SIMPLE STEEL BEAM | 6,948 LB | | |
| 0163 | 4072000000-E | 903 | SUPPORTS, 3-LB STEEL U-CHANNEL | 6,280 LF | | |
| 0164 | 4078000000-E | 903 | SUPPORTS, 2-LB STEEL U-CHANNEL | 10 EA | | |
| 0165 | 4082100000-N | 906 | SUPPORTS, OVERHEAD SIGN STRUCTURE AT STA ***** (861+15 -L3-) | Lump Sum | L.S. | |
| 0166 | 4096000000-N | 904 | SIGN ERECTION, TYPE D | 5 EA | | |
| 0167 | 4102000000-N | 904 | SIGN ERECTION, TYPE E | 339 EA | | |
| 0168 | 4108000000-N | 904 | SIGN ERECTION, TYPE F | 73 EA | | |
| 0169 | 4109000000-N | 904 | SIGN ERECTION, TYPE *** (OVERHEAD) (A) | 3 EA | | |
| 0170 | 4109000000-N | 904 | SIGN ERECTION, TYPE *** (OVERHEAD) (B) | 2 EA | | |
| 0171 | 4110000000-N | 904 | SIGN ERECTION, TYPE *** (GROUND MOUNTED) (A) | 18 EA | | |
| 0172 | 4110000000-N | 904 | SIGN ERECTION, TYPE *** (GROUND MOUNTED) (B) | 9 EA | | |
| 0173 | 4114000000-N | 904 | SIGN ERECTION, MILEMARKERS | 9 EA | | |
| 0174 | 4116100000-N | 904 | SIGN ERECTION, RELOCATE TYPE **** (GROUND MOUNTED) (D) | 3 EA | | |
| 0175 | 4116100000-N | 904 | SIGN ERECTION, RELOCATE TYPE **** (GROUND MOUNTED) (E) | 3 EA | | |

County : Rutherford

| Line # | Item Number | Sec # | Description | Quantity | Unit Cost | Amount |
|--------|--------------|-------|--|-------------|-----------|--------|
| 0176 | 4116100000-N | 904 | SIGN ERECTION, RELOCATE TYPE **** (GROUND MOUNTED) (F) | 2 EA | | |
| 0177 | 4155000000-N | 907 | DISPOSAL OF SIGN SYSTEM, U- CHANNEL | 93 EA | | |
| 0178 | 4192000000-N | 907 | DISPOSAL OF SUPPORT, U-CHANNEL | 4 EA | | |
| 0179 | 4238000000-N | 907 | DISPOSAL OF SIGN, D, E OR F | 12 EA | | |
| 0180 | 4370000000-N | SP | GENERIC SIGNING ITEM DISPOSAL OF FLASHER SYSTEM | Lump Sum | L.S. | |
| 0181 | 4400000000-E | 1110 | WORK ZONE SIGNS (STATIONARY) | 1,906 SF | | |
| 0182 | 4405000000-E | 1110 | WORK ZONE SIGNS (PORTABLE) | 672 SF | | |
| 0183 | 4410000000-E | 1110 | WORK ZONE SIGNS (BARRICADE MOUNTED) | 432 SF | | |
| 0184 | 4415000000-N | 1115 | FLASHING ARROW BOARD | 2 EA | | |
| 0185 | 4420000000-N | 1120 | PORTABLE CHANGEABLE MESSAGE SIGN | 2 EA | | |
| 0186 | 4430000000-N | 1130 | DRUMS | 920 EA | | |
| 0187 | 4434000000-N | SP | SEQUENTIAL FLASHING WARNING LIGHTS | 30 EA | | |
| 0188 | 4435000000-N | 1135 | CONES | 50 EA | | |
| 0189 | 4445000000-E | 1145 | BARRICADES (TYPE III) | 352 LF | | |
| 0190 | 4447000000-E | SP | PEDESTRIAN CHANNELIZING DE- VICES | 128 LF | | |
| 0191 | 4455000000-N | 1150 | FLAGGER | 550 DAY | | |
| 0192 | 4465000000-N | 1160 | TEMPORARY CRASH CUSHIONS | 2 EA | | |
| 0193 | 4470000000-N | 1160 | REMOVE & RESET TEMPORARY CRASH CUSHION | 2 EA | | |

County : Rutherford

| Line # | Item Number | Sec # | Description | Quantity | Unit Cost | Amount |
|--------|--------------|-------|--|----------|-----------|--------|
| 0194 | 4480000000-N | 1165 | TMA | 2 | EA | |
| 0195 | 4485000000-E | 1170 | PORTABLE CONCRETE BARRIER | 1,800 | LF | |
| 0196 | 4500000000-E | 1170 | REMOVE AND RESET PORTABLE CON- CRETE BARRIER | 1,800 | LF | |
| 0197 | 4507000000-E | 1170 | WATER FILLED BARRIER | 700 | LF | |
| 0198 | 4508000000-E | SP | REMOVE AND RESET WATER FILLED BARRIER | 700 | LF | |
| 0199 | 4510000000-N | 1190 | LAW ENFORCEMENT | 64 | HR | |
| 0200 | 4516000000-N | 1180 | SKINNY DRUM | 110 | EA | |
| 0201 | 4520000000-N | 1266 | TUBULAR MARKERS (FIXED) | 68 | EA | |
| 0202 | 4650000000-N | 1251 | TEMPORARY RAISED PAVEMENT MARKERS | 1,618 | EA | |
| 0203 | 4695000000-E | 1205 | THERMOPLASTIC PAVEMENT MARKING LINES (8", 90 MILS) | 1,687 | LF | |
| 0204 | 4720000000-E | 1205 | THERMOPLASTIC PAVEMENT MARKING CHARACTER (90 MILS) | 26 | EA | |
| 0205 | 4725000000-E | 1205 | THERMOPLASTIC PAVEMENT MARKING SYMBOL (90 MILS) | 223 | EA | |
| 0206 | 4770000000-E | 1205 | COLD APPLIED PLASTIC PAVEMENT MARKING LINES, TYPE ** (4") (IV) | 1,960 | LF | |
| 0207 | 4775000000-E | 1205 | COLD APPLIED PLASTIC PAVEMENT MARKING LINES, TYPE ** (6") (IV) | 302 | LF | |
| 0208 | 4805000000-N | 1205 | COLD APPLIED PLASTIC PAVEMENT MARKING SYMBOL, TYPE ** (I) | 2 | EA | |
| 0209 | 4810000000-E | 1205 | PAINT PAVEMENT MARKING LINES (4") | 296,225 | LF | |
| 0210 | 4815000000-E | 1205 | PAINT PAVEMENT MARKING LINES (6") | 23,546 | LF | |

County : Rutherford

| Line # | Item Number | Sec # | Description | Quantity | Unit Cost | Amount |
|--------|--------------|-------|--|---------------|-----------|--------|
| 0211 | 4820000000-E | 1205 | PAINT PAVEMENT MARKING LINES (8") | 1,400 LF | | |
| 0212 | 4825000000-E | 1205 | PAINT PAVEMENT MARKING LINES (12") | 576 LF | | |
| 0213 | 4835000000-E | 1205 | PAINT PAVEMENT MARKING LINES (24") | 770 LF | | |
| 0214 | 4845000000-N | 1205 | PAINT PAVEMENT MARKING SYMBOL | 76 EA | | |
| 0215 | 4850000000-E | 1205 | REMOVAL OF PAVEMENT MARKING LINES (4") | 32,600 LF | | |
| 0216 | 4860000000-E | 1205 | REMOVAL OF PAVEMENT MARKING LINES (8") | 400 LF | | |
| 0217 | 4870000000-E | 1205 | REMOVAL OF PAVEMENT MARKING LINES (24") | 110 LF | | |
| 0218 | 4875000000-N | 1205 | REMOVAL OF PAVEMENT MARKING SYMBOLS & CHARACTERS | 12 EA | | |
| 0219 | 4890000000-E | SP | GENERIC PAVEMENT MARKING ITEM POLYUREA PAVEMENT MARKING LINES, 12" 20 MILS (STANDARD GLASS BEADS) | 10,194 LF | | |
| 0220 | 4890000000-E | SP | GENERIC PAVEMENT MARKING ITEM POLYUREA PAVEMENT MARKING LINES, 4" 20 MILS (STANDARD GLASS BEADS) | 86,125 LF | | |
| 0221 | 4890000000-E | SP | GENERIC PAVEMENT MARKING ITEM POLYUREA PAVEMENT MARKING LINES, 6" 20 MILS (STANDARD GLASS BEADS) | 112,564 LF | | |
| 0222 | 4890000000-E | SP | GENERIC PAVEMENT MARKING ITEM POLYUREA PAVEMENT MARKING LINES, 8" 20 MILS (STANDARD GLASS BEADS) | 1,844 LF | | |
| 0223 | 4891000000-E | 1205 | GENERIC PAVEMENT MARKING ITEM THERMOPLASTIC PAVEMENT MARKING LINES (24", 90 MILS) | 430 LF | | |
| 0224 | 4895000000-N | SP | GENERIC PAVEMENT MARKING ITEM NON-CAST IRON SNOWPLOWABLE PAVEMENT MARKER | 1,606 EA | | |

County : Rutherford

| Line # | Item Number | Sec # | Description | Quantity | Unit Cost | Amount |
|--------|--------------|-------|-----------------------------------|-------------|-----------|--------|
| 0225 | 4900000000-N | 1251 | PERMANENT RAISED PAVEMENT MARKERS | 8 EA | | |
| 0226 | 4915000000-E | 1264 | 7' U-CHANNEL POSTS | 48 EA | | |
| 0227 | 4955000000-N | 1264 | OBJECT MARKERS (END OF ROAD) | 54 EA | | |
| 0228 | 5325200000-E | 1510 | 2" WATER LINE | 1,350 LF | | |
| 0229 | 5325600000-E | 1510 | 6" WATER LINE | 2,515 LF | | |
| 0230 | 5325800000-E | 1510 | 8" WATER LINE | 960 LF | | |
| 0231 | 5326000000-E | 1510 | 10" WATER LINE | 5,790 LF | | |
| 0232 | 5326200000-E | 1510 | 12" WATER LINE | 3,130 LF | | |
| 0233 | 5329000000-E | 1510 | DUCTILE IRON WATER PIPE FITTINGS | 8,349 LB | | |
| 0234 | 5536000000-E | 1515 | 2" VALVE | 5 EA | | |
| 0235 | 5540000000-E | 1515 | 6" VALVE | 35 EA | | |
| 0236 | 5546000000-E | 1515 | 8" VALVE | 4 EA | | |
| 0237 | 5552000000-E | 1515 | 10" VALVE | 22 EA | | |
| 0238 | 5558000000-E | 1515 | 12" VALVE | 6 EA | | |
| 0240 | 5571600000-E | 1515 | 6" TAPPING SLEEVE & VALVE | 1 EA | | |
| 0241 | 5606000000-E | 1515 | 2" BLOW OFF | 5 EA | | |
| 0242 | 5648000000-N | 1515 | RELOCATE WATER METER | 9 EA | | |
| 0243 | 5649000000-N | 1515 | RECONNECT WATER METER | 12 EA | | |
| 0244 | 5666000000-N | 1515 | FIRE HYDRANT | 2 EA | | |
| 0245 | 5672000000-N | 1515 | RELOCATE FIRE HYDRANT | 15 EA | | |

County : Rutherford

| Line # | Item Number | Sec # | Description | Quantity | Unit Cost | Amount |
|--------|--------------|-------|---------------------------------------|----------|-----------|--------|
| 0246 | 5691300000-E | 1520 | 8" SANITARY GRAVITY SEWER | 7,698.23 | LF | |
| 0247 | 5691400000-E | 1520 | 10" SANITARY GRAVITY SEWER | 1,888.1 | LF | |
| 0248 | 5691500000-E | 1520 | 12" SANITARY GRAVITY SEWER | 1,337.25 | LF | |
| 0249 | 5709200000-E | 1520 | 4" FORCE MAIN SEWER | 3,117 | LF | |
| 0250 | 5709400000-E | 1520 | 8" FORCE MAIN SEWER | 310 | LF | |
| 0251 | 5775000000-E | 1525 | 4' DIA UTILITY MANHOLE | 43 | EA | |
| 0252 | 5801000000-E | 1530 | ABANDON 8" UTILITY PIPE | 4,983.8 | LF | |
| 0253 | 5802000000-E | 1530 | ABANDON 10" UTILITY PIPE | 4,827 | LF | |
| 0254 | 5804000000-E | 1530 | ABANDON 12" UTILITY PIPE | 584 | LF | |
| 0255 | 5815000000-N | 1530 | REMOVE WATER METER | 26 | EA | |
| 0256 | 5835700000-E | 1540 | 16" ENCASEMENT PIPE | 270 | LF | |
| 0257 | 5835800000-E | 1540 | 18" ENCASEMENT PIPE | 1,468 | LF | |
| 0258 | 5836000000-E | 1540 | 24" ENCASEMENT PIPE | 1,386 | LF | |
| 0259 | 6000000000-E | 1605 | TEMPORARY SILT FENCE | 143,000 | LF | |
| 0260 | 6006000000-E | 1610 | STONE FOR EROSION CONTROL, CLASS A | 8,860 | TON | |
| 0261 | 6009000000-E | 1610 | STONE FOR EROSION CONTROL, CLASS B | 40,810 | TON | |
| 0262 | 6012000000-E | 1610 | SEDIMENT CONTROL STONE | 19,350 | TON | |
| 0263 | 6015000000-E | 1615 | TEMPORARY MULCHING | 711 | ACR | |
| 0264 | 6018000000-E | 1620 | SEED FOR TEMPORARY SEEDING | 27,700 | LB | |
| 0265 | 6021000000-E | 1620 | FERTILIZER FOR TEMPORARY SEED- ING | 141.5 | TON | |

County : Rutherford

| Line # | Item Number | Sec # | Description | Quantity | Unit Cost | Amount |
|--------|--------------|-------|---------------------------------------|----------|-----------|--------|
| 0266 | 6024000000-E | 1622 | TEMPORARY SLOPE DRAINS | 28,125 | LF | |
| 0267 | 6029000000-E | SP | SAFETY FENCE | 11,320 | LF | |
| 0268 | 6030000000-E | 1630 | SILT EXCAVATION | 250,750 | CY | |
| 0269 | 6036000000-E | 1631 | MATTING FOR EROSION CONTROL | 892,500 | SY | |
| 0270 | 6037000000-E | SP | COIR FIBER MAT | 2,640 | SY | |
| 0271 | 6038000000-E | SP | PERMANENT SOIL REINFORCEMENT MAT | 32,000 | SY | |
| 0272 | 6042000000-E | 1632 | 1/4" HARDWARE CLOTH | 22,655 | LF | |
| 0273 | 6045000000-E | SP | *** TEMPORARY PIPE (36") | 135 | LF | |
| 0274 | 6046000000-E | 1636 | TEMPORARY PIPE FOR STREAM CROSSING | 125 | LF | |
| 0275 | 6069000000-E | 1638 | STILLING BASINS | 210 | CY | |
| 0276 | 6070000000-N | 1639 | SPECIAL STILLING BASINS | 10 | EA | |
| 0277 | 6071012000-E | SP | COIR FIBER WATTLE | 14,930 | LF | |
| 0278 | 6071013000-E | SP | WATTLE BARRIER | 31,250 | LF | |
| 0279 | 6071020000-E | SP | POLYACRYLAMIDE (PAM) | 17,715 | LB | |
| 0280 | 6071030000-E | 1640 | COIR FIBER BAFFLE | 27,830 | LF | |
| 0281 | 6071050000-E | SP | *** SKIMMER (1-1/2") | 75 | EA | |
| 0282 | 6071050000-E | SP | *** SKIMMER (2") | 18 | EA | |
| 0283 | 6071050000-E | SP | *** SKIMMER (2-1/2") | 13 | EA | |
| 0284 | 6071050000-E | SP | *** SKIMMER (3") | 1 | EA | |

County : Rutherford

| Line # | Item Number | Sec # | Description | Quantity | Unit Cost | Amount |
|--------|--------------|-------|---|----------|-----------|--------|
| 0285 | 6084000000-E | 1660 | SEEDING & MULCHING | 365 | ACR | |
| 0286 | 6087000000-E | 1660 | MOWING | 251 | ACR | |
| 0287 | 6090000000-E | 1661 | SEED FOR REPAIR SEEDING | 7,250 | LB | |
| 0288 | 6093000000-E | 1661 | FERTILIZER FOR REPAIR SEEDING | 19.25 | TON | |
| 0289 | 6096000000-E | 1662 | SEED FOR SUPPLEMENTAL SEEDING | 9,500 | LB | |
| 0290 | 6108000000-E | 1665 | FERTILIZER TOPDRESSING | 283.75 | TON | |
| 0291 | 6111000000-E | SP | IMPERVIOUS DIKE | 770 | LF | |
| 0292 | 6114500000-N | 1667 | SPECIALIZED HAND MOWING | 180 | MHR | |
| 0293 | 6117000000-N | SP | RESPONSE FOR EROSION CONTROL | 150 | EA | |
| 0294 | 6117500000-N | SP | CONCRETE WASHOUT STRUCTURE | 32 | EA | |
| 0295 | 6120000000-E | SP | CULVERT DIVERSION CHANNEL | 1,010 | CY | |
| 0296 | 6132000000-N | SP | GENERIC EROSION CONTROL ITEM FABRIC INSERT INLET PROTECTION DEVICE CLEANOUT | 100 | EA | |
| 0297 | 6132000000-N | SP | GENERIC EROSION CONTROL ITEM FABRIC INSERT INLET PROTECTION DEVICE | 33 | EA | |
| 0298 | 7048500000-E | 1705 | PEDESTRIAN SIGNAL HEAD (16", 1 SECTION W/COUNTDOWN) | 4 | EA | |
| 0299 | 7060000000-E | 1705 | SIGNAL CABLE | 7,500 | LF | |
| 0300 | 7120000000-E | 1705 | VEHICLE SIGNAL HEAD (12", 3 SECTION) | 32 | EA | |
| 0301 | 7132000000-E | 1705 | VEHICLE SIGNAL HEAD (12", 4 SECTION) | 11 | EA | |
| 0302 | 7144000000-E | 1705 | VEHICLE SIGNAL HEAD (12", 5 SECTION) | 3 | EA | |
| 0303 | 7264000000-E | 1710 | MESSENGER CABLE (3/8") | 550 | LF | |

County : Rutherford

| Line # | Item Number | Sec # | Description | Quantity | Unit Cost | Amount |
|--------|--------------|-------|--|--------------|-----------|--------|
| 0304 | 7300000000-E | 1715 | UNPAVED TRENCHING (*****) (1, 2") | 550 LF | | |
| 0305 | 7300000000-E | 1715 | UNPAVED TRENCHING (*****) (2, 2") | 405 LF | | |
| 0306 | 7300000000-E | 1715 | UNPAVED TRENCHING (*****) (4, 2") | 310 LF | | |
| 0307 | 7301000000-E | 1715 | DIRECTIONAL DRILL (*****) (1, 2") | 200 LF | | |
| 0308 | 7301000000-E | 1715 | DIRECTIONAL DRILL (*****) (2, 2") | 575 LF | | |
| 0309 | 7301000000-E | 1715 | DIRECTIONAL DRILL (*****) (3, 2") | 100 LF | | |
| 0310 | 7301000000-E | 1715 | DIRECTIONAL DRILL (*****) (4, 2") | 275 LF | | |
| 0311 | 7301000000-E | 1715 | DIRECTIONAL DRILL (*****) (5, 2") | 150 LF | | |
| 0312 | 7324000000-N | 1716 | JUNCTION BOX (STANDARD SIZE) | 8 EA | | |
| 0313 | 7348000000-N | 1716 | JUNCTION BOX (OVER-SIZED, HEAVY DUTY) | 10 EA | | |
| 0314 | 7360000000-N | 1720 | WOOD POLE | 4 EA | | |
| 0315 | 7372000000-N | 1721 | GUY ASSEMBLY | 7 EA | | |
| 0316 | 7408000000-E | 1722 | 1" RISER WITH WEATHERHEAD | 2 EA | | |
| 0317 | 7420000000-E | 1722 | 2" RISER WITH WEATHERHEAD | 3 EA | | |
| 0318 | 7444000000-E | 1725 | INDUCTIVE LOOP SAWCUT | 3,600 LF | | |
| 0319 | 7456000000-E | 1726 | LEAD-IN CABLE (*****) (14-2) | 11,000 LF | | |
| 0320 | 7481000000-N | SP | SITE SURVEY | 1 EA | | |
| 0321 | 7481240000-N | SP | CAMERA WITHOUT INTERNAL LOOP EMULATOR PROCESSING UNIT | 3 EA | | |

County : Rutherford

| Line # | Item Number | Sec # | Description | Quantity | Unit Cost | Amount |
|--------|--------------|-------|---|----------|-----------|--------|
| 0322 | 7481260000-N | SP | EXTERNAL LOOP EMULATOR PROCESSING UNIT | 1 | EA | |
| 0323 | 7575142010-N | 1736 | 900MHZ SERIAL/ETHERNET SPREAD SPECTRUM RADIO | 10 | EA | |
| 0324 | 7588000000-N | SP | METAL POLE WITH SINGLE MAST ARM | 10 | EA | |
| 0325 | 7590000000-N | SP | METAL POLE WITH DUAL MAST ARM | 2 | EA | |
| 0326 | 7613000000-N | SP | SOIL TEST | 12 | EA | |
| 0327 | 7614100000-E | SP | DRILLED PIER FOUNDATION | 84 | CY | |
| 0328 | 7631000000-N | SP | MAST ARM WITH METAL POLE DESIGN | 12 | EA | |
| 0329 | 7636000000-N | 1745 | SIGN FOR SIGNALS | 14 | EA | |
| 0330 | 7642200000-N | 1743 | TYPE II PEDESTAL WITH FOUNDATION | 7 | EA | |
| 0331 | 7684000000-N | 1750 | SIGNAL CABINET FOUNDATION | 4 | EA | |
| 0332 | 7696000000-N | 1751 | CONTROLLERS WITH CABINET (*****) (2070E, BASE MOUNTED) | 4 | EA | |
| 0333 | 7744000000-N | 1751 | DETECTOR CARD (TYPE 170) | 22 | EA | |
| 0334 | 7901000000-N | 1753 | CABINET BASE EXTENDER | 4 | EA | |
| 0335 | 7948000000-N | 1757 | TRAFFIC SIGNAL REMOVAL | 1 | EA | |
| 0336 | 7960000000-N | SP | METAL POLE FOUNDATION REMOVAL | 1 | EA | |
| 0337 | 7972000000-N | SP | METAL POLE REMOVAL | 1 | EA | |
| 0338 | 7980000000-N | SP | GENERIC SIGNAL ITEM 2070E CONTROLLER | 6 | EA | |
| 0339 | 7980000000-N | SP | GENERIC SIGNAL ITEM PROTECTIVE COATING FOR DUAL MAST ARM POLE (BLACK) | 2 | EA | |

County : Rutherford

| Line # | Item Number | Sec # | Description | Quantity | Unit Cost | Amount |
|--------|--------------|-------|---|-------------|-----------|--------|
| 0340 | 7980000000-N | SP | GENERIC SIGNAL ITEM PROTECTIVE COATING FOR SIGNAL PEDESTAL (BLACK) | 7 EA | | |
| 0341 | 7980000000-N | SP | GENERIC SIGNAL ITEM PROTECTIVE COATING FOR SINGLE MAST ARM POLE (BLACK) | 10 EA | | |
| 0392 | 5673000000-E | 1515 | FIRE HYDRANT LEG | 305.9 LF | | |
| 0393 | 5686000000-E | 1515 | *** WATER SERVICE LINE (2") | 94.7 LF | | |
| 0394 | 5776000000-E | 1525 | 5' DIA UTILITY MANHOLE | 19 EA | | |
| 0395 | 5781000000-E | 1525 | UTILITY MANHOLE WALL 4' DIA | 139 LF | | |
| 0396 | 5782000000-E | 1525 | UTILITY MANHOLE WALL 5' DIA | 215 LF | | |
| 0397 | 5912000000-N | SP | GENERIC UTILITY ITEM UTILITY COORDINATOR | Lump Sum | L.S. | |
| 0398 | 0973100000-E | 330 | *** WELDED STEEL PIPE, ***** THICK, GRADE B IN SOIL (36", 0.500") | 346 LF | | |
| 0399 | 0973300000-E | 330 | *** WELDED STEEL PIPE, ***** THICK, GRADE B NOT IN SOIL (42", 0.625") | 276 LF | | |
| 0400 | 0973300000-E | 330 | *** WELDED STEEL PIPE, ***** THICK, GRADE B NOT IN SOIL (66", 0.875") | 122 LF | | |
| 0401 | 3575000000-E | SP | GENERIC FENCING ITEM ORNAMENTAL WOOD FENCE | 100 LF | | |
| 0402 | 4360000000-N | SP | GENERIC SIGNING ITEM RRFB ASSEMBLY | 4 EA | | |
| 0403 | 4360000000-N | SP | GENERIC SIGNING ITEM ADVANCE WARNING FLASHING BEA- CON ASSEMBLY | 3 EA | | |

County : Rutherford

| Line # | Item Number | Sec # | Description | Quantity | Unit Cost | Amount |
|----------------------|--------------|-------|---|---------------|-----------|--------|
| CULVERT ITEMS | | | | | | |
| 0342 | 8056000000-N | 402 | REMOVAL OF EXISTING STRUCTURE AT STATION ***** (874+45.00 -L3-) | Lump Sum | L.S. | |
| 0343 | 8065000000-N | SP | ASBESTOS ASSESSMENT | Lump Sum | L.S. | |
| 0344 | 8126000000-N | 414 | CULVERT EXCAVATION, STA ***** (735+38.59 -L3-) | Lump Sum | L.S. | |
| 0345 | 8126000000-N | 414 | CULVERT EXCAVATION, STA ***** (797+66.00 -L3-) | Lump Sum | L.S. | |
| 0346 | 8126000000-N | 414 | CULVERT EXCAVATION, STA ***** (830+02.00 -L3-) | Lump Sum | L.S. | |
| 0347 | 8126000000-N | 414 | CULVERT EXCAVATION, STA ***** (874+45.00 -L3-) | Lump Sum | L.S. | |
| 0348 | 8133000000-E | 414 | FOUNDATION CONDITIONING MATER- IAL, BOX CULVERT | 2,287 TON | | |
| 0349 | 8196000000-E | 420 | CLASS A CONCRETE (CULVERT) | 5,708.1 CY | | |
| 0350 | 8245000000-E | 425 | REINFORCING STEEL (CULVERT) | 920,565 LB | | |
| 0351 | 8590000000-E | 876 | RIP RAP, CLASS ** (II) | 32 TON | | |
| 0352 | 8622000000-E | 876 | GEOTEXTILE FOR DRAINAGE | 1,695 SY | | |
| WALL ITEMS | | | | | | |
| 0353 | 8504000000-E | 460 | CONCRETE BARRIER RAIL WITH MOMENT SLAB | 268 LF | | |
| 0354 | 8801000000-E | SP | MSE RETAINING WALL NO **** (1) | 6,350 SF | | |
| 0355 | 8801000000-E | SP | MSE RETAINING WALL NO **** (2) | 4,335 SF | | |
| 0356 | 8801000000-E | SP | MSE RETAINING WALL NO **** (6) | 4,665 SF | | |

County : Rutherford

| Line # | Item Number | Sec # | Description | Quantity | Unit Cost | Amount |
|------------------------|--------------|-------|--|---------------|-----------|--------|
| 0357 | 8847000000-E | SP | GENERIC RETAINING WALL ITEM ARCHITECTURAL SURFACE TREAT- MENT | 149,026 SF | | |
| 0358 | 8847000000-E | SP | GENERIC RETAINING WALL ITEM SOUND BARRIER WALL NO -NW11- | 18,303 SF | | |
| 0359 | 8847000000-E | SP | GENERIC RETAINING WALL ITEM SOUND BARRIER WALL NO -NW13- | 26,005 SF | | |
| 0360 | 8847000000-E | SP | GENERIC RETAINING WALL ITEM SOUND BARRIER WALL NO -NW15- | 7,308 SF | | |
| 0361 | 8847000000-E | SP | GENERIC RETAINING WALL ITEM SOUND BARRIER WALL NO -NW5A- | 14,210 SF | | |
| 0362 | 8847000000-E | SP | GENERIC RETAINING WALL ITEM SOUND BARRIER WALL NO -NW5B- | 8,208 SF | | |
| 0363 | 8847000000-E | SP | GENERIC RETAINING WALL ITEM SOUND BARRIER WALL NO -NW8- | 18,010 SF | | |
| STRUCTURE ITEMS | | | | | | |
| 0364 | 8091000000-N | 410 | FOUNDATION EXCAVATION FOR BENT ** AT STATION ***** (1, 20+88.94 -Y19-) | Lump Sum | L.S. | |
| 0365 | 8105560000-E | 411 | 4'-0" DIA DRILLED PIERS IN SOIL | 50 LF | | |
| 0366 | 8105660000-E | 411 | 4'-0" DIA DRILLED PIERS NOT IN SOIL | 50 LF | | |
| 0367 | 8115000000-N | 411 | CSL TESTING | 1 EA | | |
| 0368 | 8147000000-E | 420 | REINFORCED CONCRETE DECK SLAB | 38,861 SF | | |
| 0369 | 8161000000-E | 420 | GROOVING BRIDGE FLOORS | 40,654 SF | | |
| 0370 | 8182000000-E | 420 | CLASS A CONCRETE (BRIDGE) | 601.6 CY | | |
| 0371 | 8210000000-N | 422 | BRIDGE APPROACH SLABS, STATION ***** (20+88.94 -Y19-) | Lump Sum | L.S. | |

County : Rutherford

| Line # | Item Number | Sec # | Description | Quantity | Unit Cost | Amount |
|--------|--------------|-------|---|----------------|-----------|--------|
| 0372 | 8210000000-N | 422 | BRIDGE APPROACH SLABS, STATION ***** (26+65.52 -Y3-) | Lump Sum | L.S. | |
| 0373 | 8210000000-N | 422 | BRIDGE APPROACH SLABS, STATION ***** (774+41.49 -L3- LT) | Lump Sum | L.S. | |
| 0374 | 8210000000-N | 422 | BRIDGE APPROACH SLABS, STATION ***** (774+41.49 -L3- RT) | Lump Sum | L.S. | |
| 0375 | 8217000000-E | 425 | REINFORCING STEEL (BRIDGE) | 98,466 LB | | |
| 0376 | 8238000000-E | 425 | SPIRAL COLUMN REINFORCING STEEL (BRIDGE) | 7,072 LB | | |
| 0377 | 8265000000-E | 430 | 54" PRESTRESSED CONCRETE GIR- DERS | 2,104.67 LF | | |
| 0378 | 8277000000-E | 430 | MODIFIED 72" PRESTRESSED CONC GIRDERS | 2,254.9 LF | | |
| 0379 | 8328200000-E | 450 | PILE DRIVING EQUIPMENT SETUP FOR *** STEEL PILES (HP 12 X 53) | 72 EA | | |
| 0380 | 8328200000-E | 450 | PILE DRIVING EQUIPMENT SETUP FOR *** STEEL PILES (HP 14 X 73) | 30 EA | | |
| 0381 | 8364000000-E | 450 | HP12X53 STEEL PILES | 4,005 LF | | |
| 0382 | 8384000000-E | 450 | HP14X73 STEEL PILES | 940 LF | | |
| 0383 | 8391000000-N | 450 | STEEL PILE POINTS | 18 EA | | |
| 0384 | 8392500000-E | 450 | PREDRILLING FOR PILES | 170 LF | | |
| 0385 | 8475000000-E | 460 | TWO BAR METAL RAIL | 496.77 LF | | |
| 0386 | 8482000000-E | 460 | THREE BAR METAL RAIL | 343.92 LF | | |
| 0387 | 8503000000-E | 460 | CONCRETE BARRIER RAIL | 407.2 LF | | |
| 0388 | 8505000000-E | 460 | VERTICAL CONCRETE BARRIER RAIL | 277.14 LF | | |

County : Rutherford

| Line # | Item Number | Sec # | Description | Quantity | Unit Cost | Amount |
|--------|--------------|-------|---|----------|-----------|--------|
| 0389 | 8517000000-E | 460 | 1'-***"X ***** CONCRETE PARA-PET (1'-2" X 2'-6") | 504.55 | LF | |
| 0390 | 8531000000-E | 462 | 4" SLOPE PROTECTION | 2,278 | SY | |
| 0391 | 8657000000-N | 430 | ELASTOMERIC BEARINGS | Lump Sum | L.S. | |

0946/Dec14/Q8058575.367/D1777759787010/E402

Total Amount Of Bid For Entire Project :