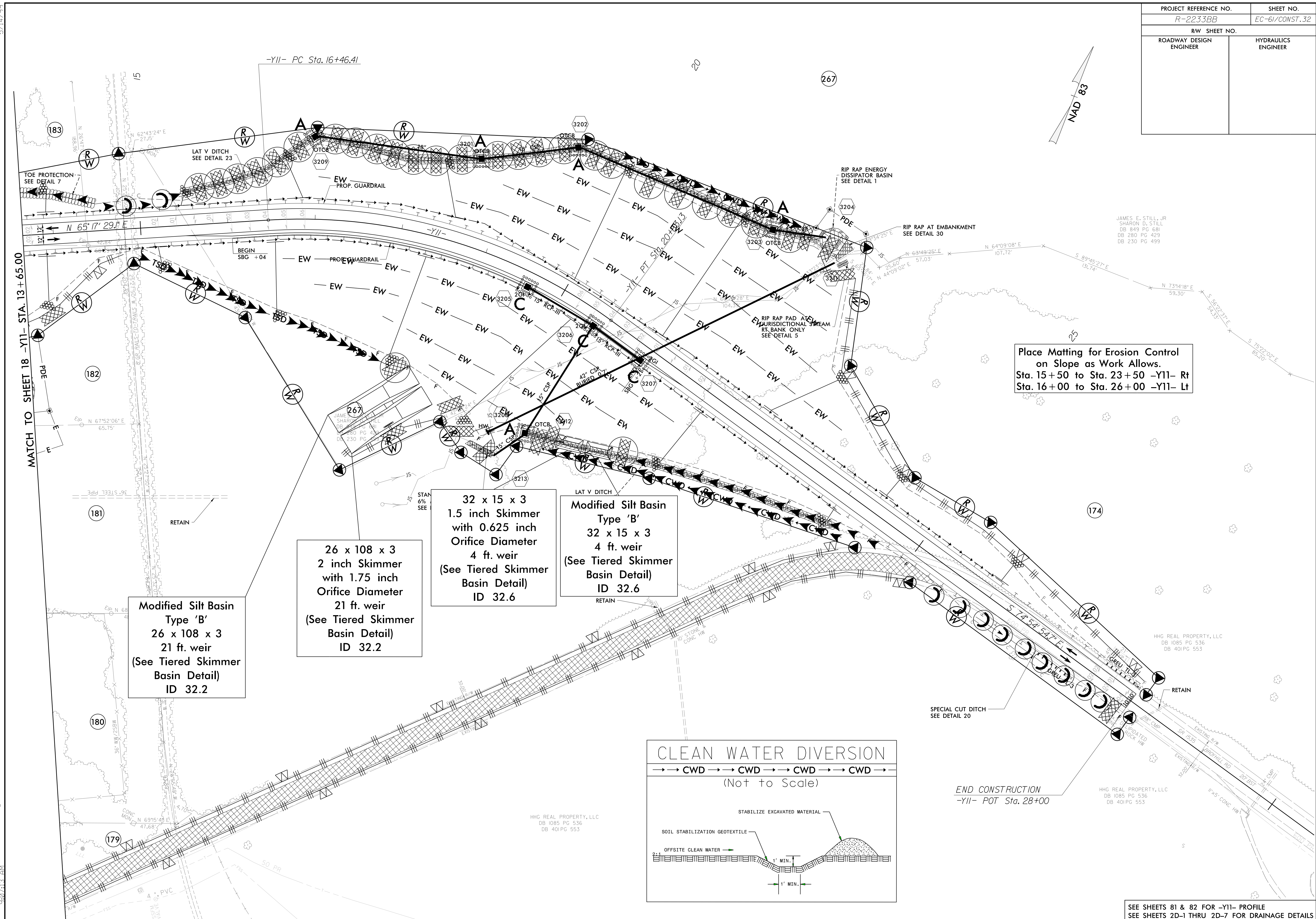


PROJECT REFERENCE NO.	SHEET NO.
R-2233BB	EC-61/CONST.32
RW SHEET NO.	
ROADWAY DESIGN ENGINEER	HYDRAULICS ENGINEER

ROW REV. - December 21, 2017 - Parcel 174 - Added a note to abandon existing RW (WET)

3/17/2020
R-2233BB-EC_PSH.dgn
9:07:13 AM



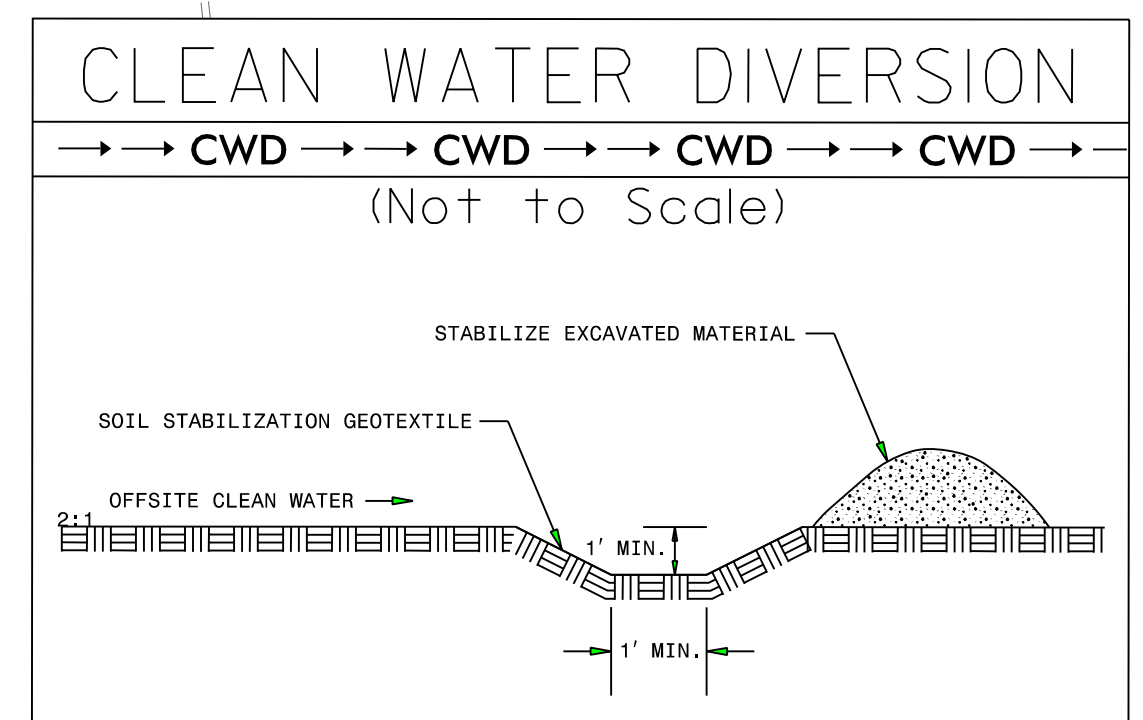
Place Matting for Erosion Control on Slope as Work Allows.
Sta. 15+50 to Sta. 23+50 -Y11- Rt
Sta. 16+00 to Sta. 26+00 -Y11- Lt

Modified Silt Basin
Type 'B'
26 x 108 x 3
21 ft. weir
(See Tiered Skimmer Basin Detail)
ID 32.2

26 x 108 x 3
2 inch Skimmer
with 1.75 inch
Orifice Diameter
21 ft. weir
(See Tiered Skimmer Basin Detail)
ID 32.2

32 x 15 x 3
1.5 inch Skimmer
with 0.625 inch
Orifice Diameter
4 ft. weir
(See Tiered Skimmer Basin Detail)
ID 32.6

Modified Silt Basin
Type 'B'
32 x 15 x 3
4 ft. weir
(See Tiered Skimmer Basin Detail)
ID 32.6



END CONSTRUCTION
-Y11- POT Sta. 28+00

SEE SHEETS 81 & 82 FOR -Y11- PROFILE
SEE SHEETS 2D-1 THRU 2D-7 FOR DRAINAGE DETAILS