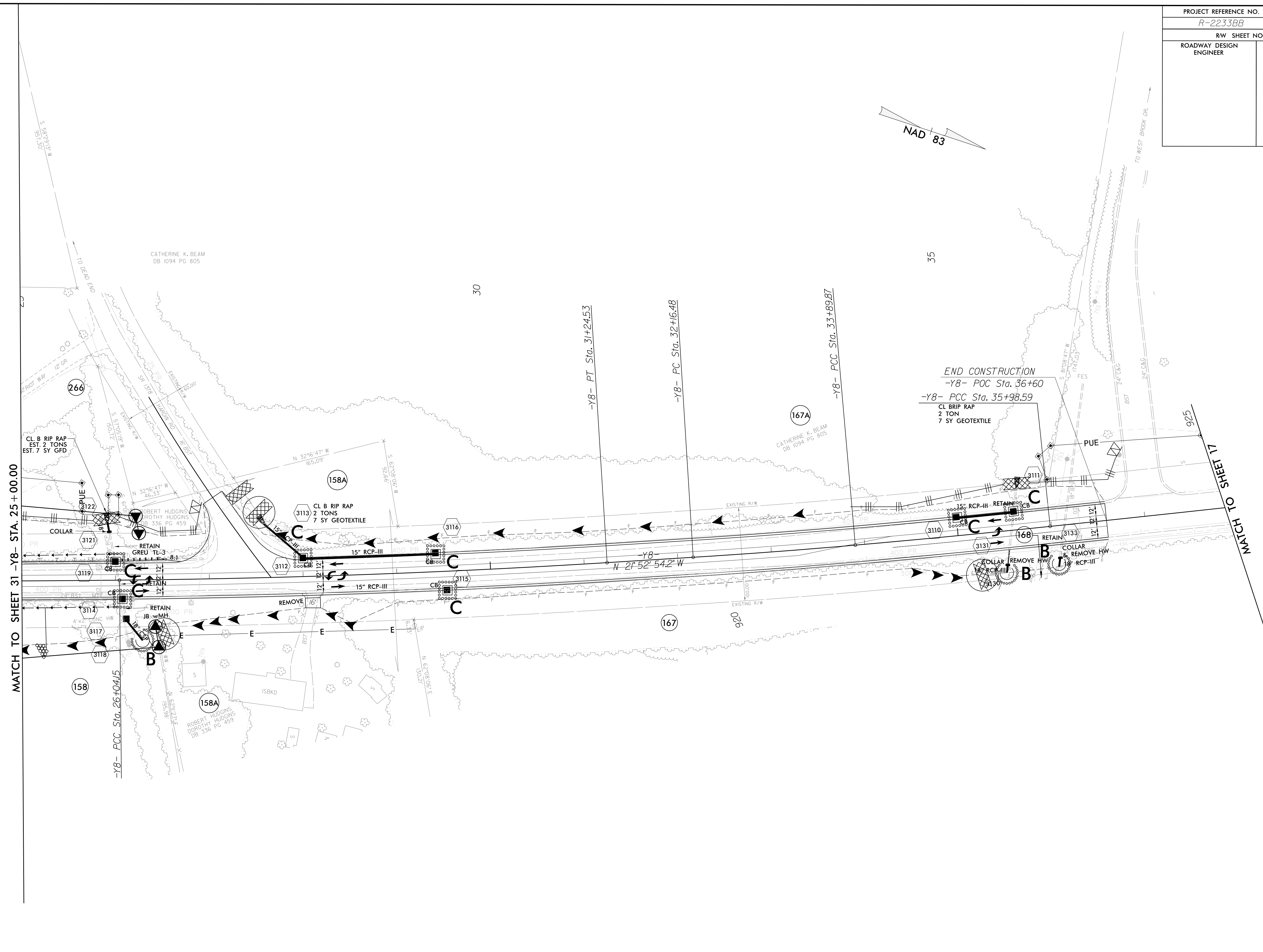


PROJECT REFERENCE NO. R-2233BB		SHEET NO. EC-60A/CONST. 31A	
RW SHEET NO. ROADWAY DESIGN ENGINEER		HYDRAULICS ENGINEER	

ROW REV. - October 22, 2018 - Parcel 158 - Revised take for roundabout (WET)
 ROW REV. - October 22, 2018 - Parcel 158A - New take for roundabout (WET)
 ROW REV. - October 22, 2018 - Parcel 266 - Revised take for roundabout (WET)

3/16/2020
 5:39:35 PM
 33BBB_EC_PSH.dgn



END CONSTRUCTION
 -Y8- POC Sta. 36+60
 -Y8- PCC Sta. 35+98.59
 CL BRIP RAP
 2 TON
 7 SY GEOTEXTILE

SEE SHEETS 78 & 79 FOR -Y8- PROFILE
 SEE SHEETS 2D-1 THRU 2D-7 FOR DRAINAGE DETAILS