

PROJECT REFERENCE NO.	SHEET NO.
R-2233BB	EC-48/CONST.19
RW SHEET NO.	
ROADWAY DESIGN ENGINEER	HYDRAULICS ENGINEER

Place Matting for Erosion Control on Slope as Work Allows.  
 Sta. 953+50 to Sta. 960+00 -L3- Rt  
 Sta. 959+00 to Sta. 959+50 -L3- Lt  
 Sta. 961+50 to Sta. 972+00 -L3- Lt  
 Sta. 962+00 to Sta. 972+00 -L3- Rt

Modified Silt Basin  
 Type 'B'  
 32 x 21 x 3  
 5 ft. weir  
 (See Tiered Skimmer Basin Detail)  
 ID 19.2

32 x 21 x 3  
 1.5 inch Skimmer  
 with 0.875 inch  
 Orifice Diameter  
 5 ft. weir  
 (See Tiered Skimmer Basin Detail)  
 ID 19.2

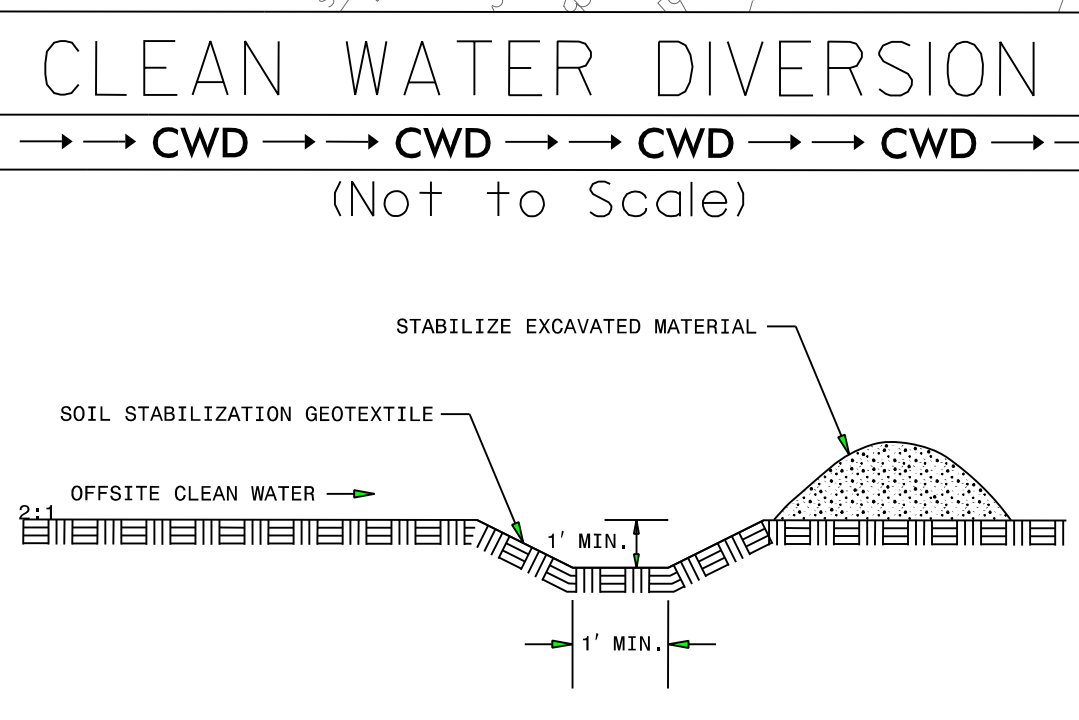
110 x 20 x 3  
 ID 19.1

Modified Silt Basin  
 Type 'B'  
 29 x 18 x 3  
 4 ft. weir  
 (See Tiered Skimmer Basin Detail)  
 ID 19.4

29 x 18 x 3  
 1.5 inch Skimmer  
 with 0.75 inch  
 Orifice Diameter  
 4 ft. weir  
 (See Tiered Skimmer Basin Detail)  
 ID 19.4

24 x 16 x 3  
 1.5 inch Skimmer  
 with 0.625 inch  
 Orifice Diameter  
 4 ft. weir  
 (See Tiered Skimmer Basin Detail)  
 ID 19.5

Modified Silt Basin  
 Type 'B'  
 24 x 16 x 3  
 4 ft. weir  
 (See Tiered Skimmer Basin Detail)  
 ID 19.5



SEE SHEET 50 FOR -L3- PROFILE  
 SEE SHEET 2B-6 FOR CONC. ISLAND DETAILS  
 SEE SHEETS 2D-1 THRU 2D-7 FOR DRAINAGE DETAILS

3/16/2020 5:38:24 PM R-2233BB-EC\_PSH.dgn