

PROJECT REFERENCE NO.	SHEET NO.
R-2233BB	EC-44/CONST.15
RW SHEET NO.	
ROADWAY DESIGN ENGINEER	HYDRAULICS ENGINEER

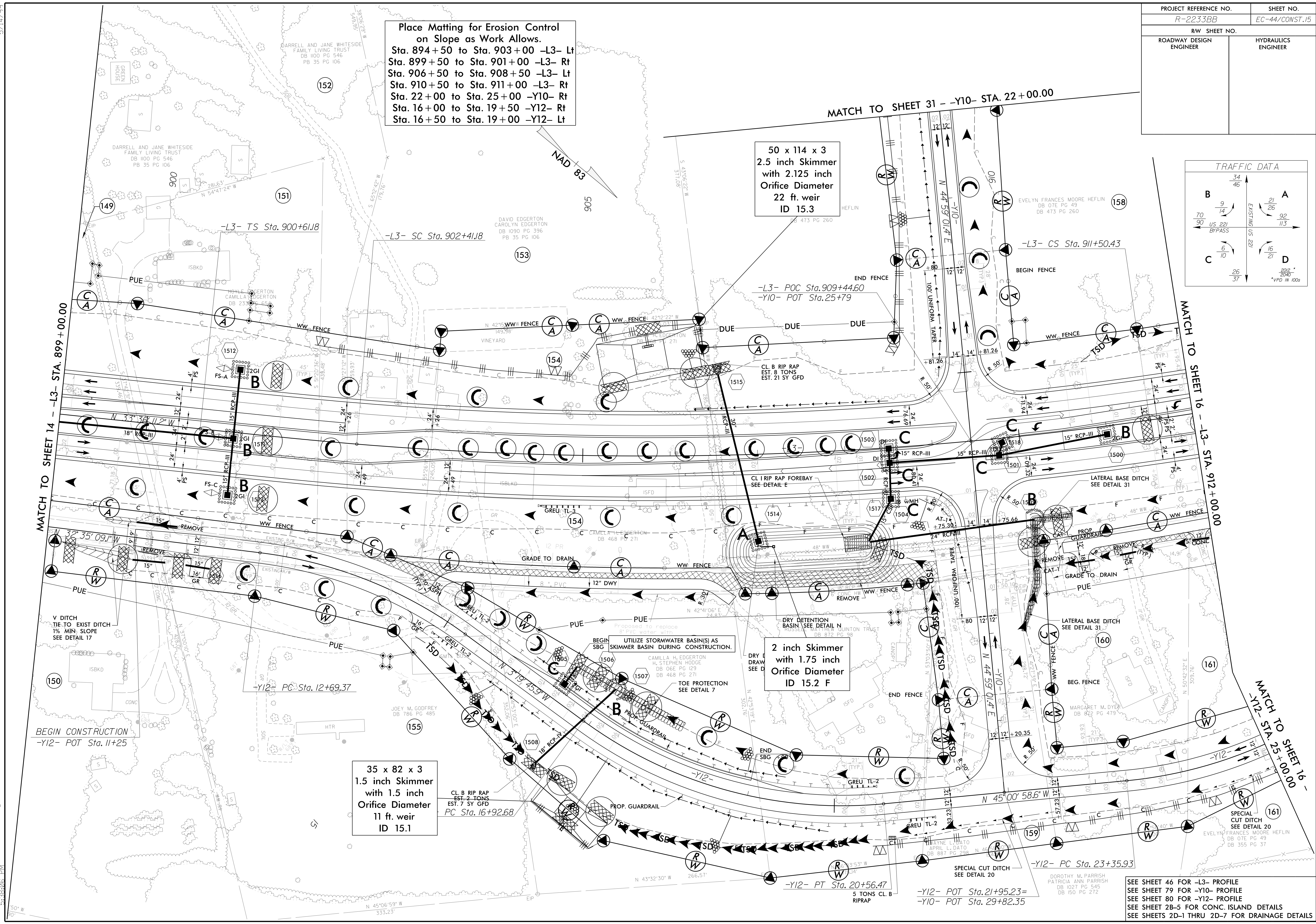
TRAFFIC DATA			
B	34/46	A	21/26
90	9/14	EXISTING	92/113
70	US 221	US 221	16/21
BYPASS			26/37
C	6/10	D	
			2012
			2040
			*VPD IN 100s

Place Matting for Erosion Control on Slope as Work Allows.
 Sta. 894+50 to Sta. 903+00 -L3- Lt
 Sta. 899+50 to Sta. 901+00 -L3- Rt
 Sta. 906+50 to Sta. 908+50 -L3- Lt
 Sta. 910+50 to Sta. 911+00 -L3- Rt
 Sta. 22+00 to Sta. 25+00 -Y10- Rt
 Sta. 16+00 to Sta. 19+50 -Y12- Rt
 Sta. 16+50 to Sta. 19+00 -Y12- Lt

50 x 114 x 3
 2.5 inch Skimmer
 with 2.125 inch
 Orifice Diameter
 22 ft. weir
 ID 15.3

2 inch Skimmer
 with 1.75 inch
 Orifice Diameter
 ID 15.2 F

35 x 82 x 3
 1.5 inch Skimmer
 with 1.5 inch
 Orifice Diameter
 11 ft. weir
 ID 15.1



SEE SHEET 46 FOR -L3- PROFILE
 SEE SHEET 79 FOR -Y10- PROFILE
 SEE SHEET 80 FOR -Y12- PROFILE
 SEE SHEET 2B-5 FOR CONC. ISLAND DETAILS
 SEE SHEETS 2D-1 THRU 2D-7 FOR DRAINAGE DETAILS

5/14/99
 3/16/2020
 R-2233BB-EC_PSH.dgn
 5:38:05 PM