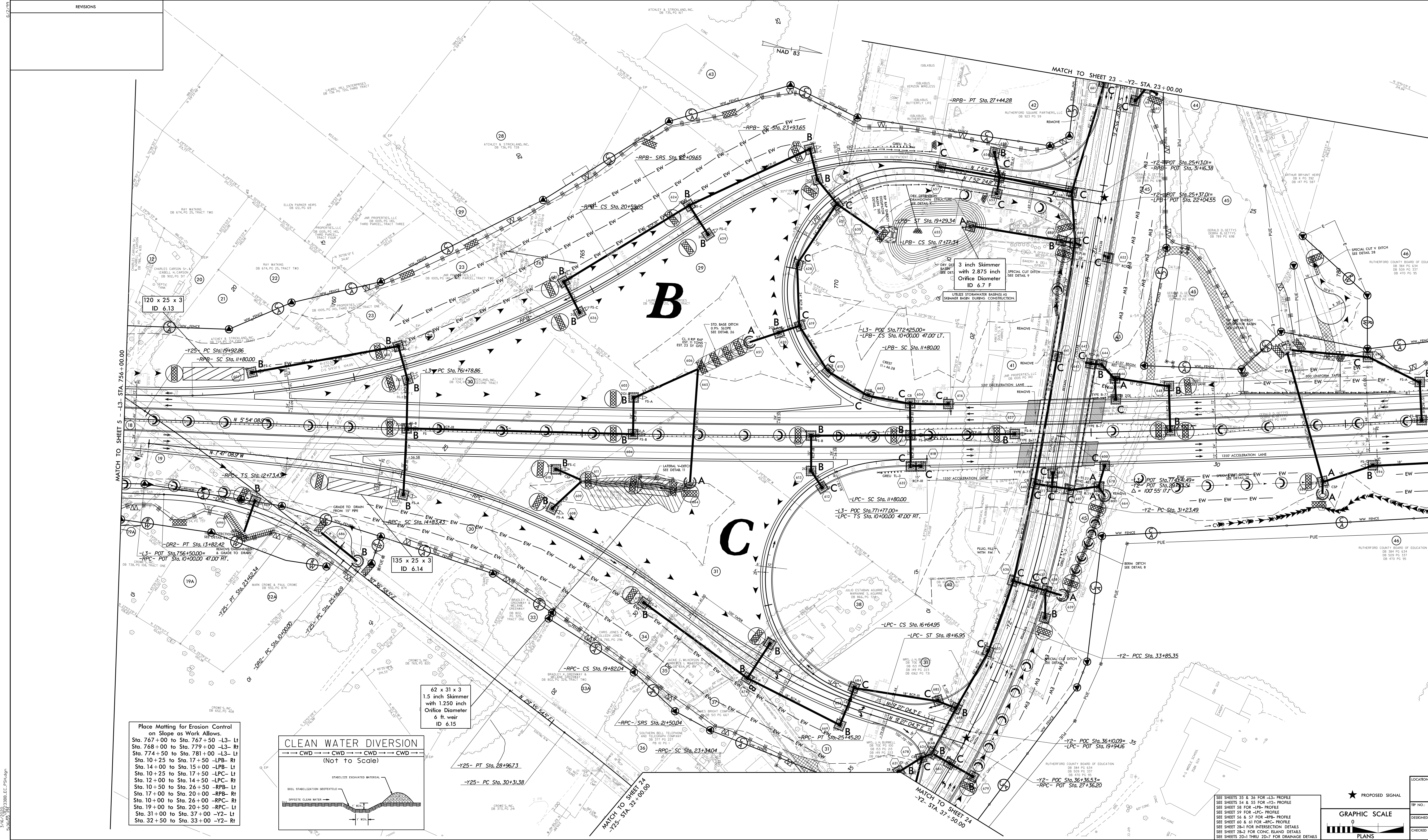


NO.	DATE	REVISIONS

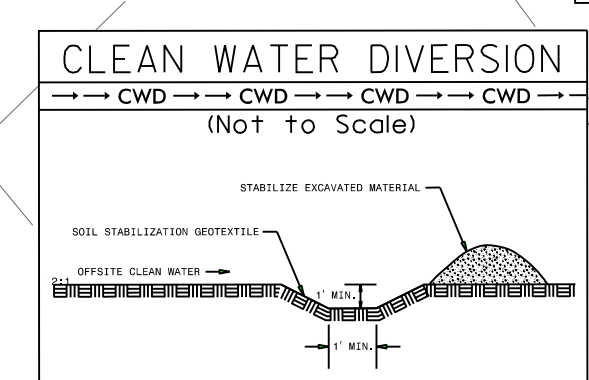
PROJECT REFERENCE NO. P-223368	SHEET NO. EC-35/CONV.6
ROADWAY DESIGN ENGINEER	HYDRAULICS ENGINEER

TRAFFIC DATA			
B	87	114	A
10	13	12	13
65	88	128	145
US 221		BYPASS	
C	33	57	D
192	255	94	112
*PP, W. 009			



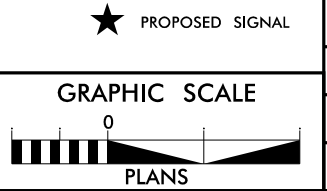
Place Matting for Erosion Control on Slope as Work Allows.

Sta. 767+00 to Sta. 767+50 -L3- Lt
Sta. 768+00 to Sta. 779+00 -L3- Rt
Sta. 774+50 to Sta. 781+00 -L3- Lt
Sta. 10+25 to Sta. 17+50 -LPB- Rt
Sta. 14+00 to Sta. 15+00 -LPB- Lt
Sta. 10+25 to Sta. 17+50 -LPC- Lt
Sta. 12+00 to Sta. 14+50 -LPC- Rt
Sta. 10+50 to Sta. 26+50 -RPB- Lt
Sta. 17+00 to Sta. 20+00 -RPB- Rt
Sta. 10+00 to Sta. 26+00 -RPC- Rt
Sta. 19+00 to Sta. 20+50 -RPC- Lt
Sta. 31+00 to Sta. 37+00 -Y2- Lt
Sta. 32+50 to Sta. 33+00 -Y2- Rt



62 x 31 x 3
1.5 inch Skimmer
with 1.250 inch
Orifice Diameter
6 ft. weir
ID 6.15

SEE SHEETS 35 & 36 FOR -L3- PROFILE
SEE SHEETS 34 & 35 FOR -Y2- PROFILE
SEE SHEET 38 FOR -LPC- PROFILE
SEE SHEET 39 FOR -LPC- PROFILE
SEE SHEET 34 & 37 FOR -RPB- PROFILE
SEE SHEET 40 & 41 FOR -RPC- PROFILE
SEE SHEET 38-1 FOR INTERSECTION DETAILS
SEE SHEET 38-2 FOR CONC. ISLAND DETAILS
SEE SHEETS 22-1 THRU 22-7 FOR GRANNAGE DETAILS



LOCATION:	COUNTY:
TRIP NO.:	
DESIGNED BY:	
CHECKED BY:	DATE: