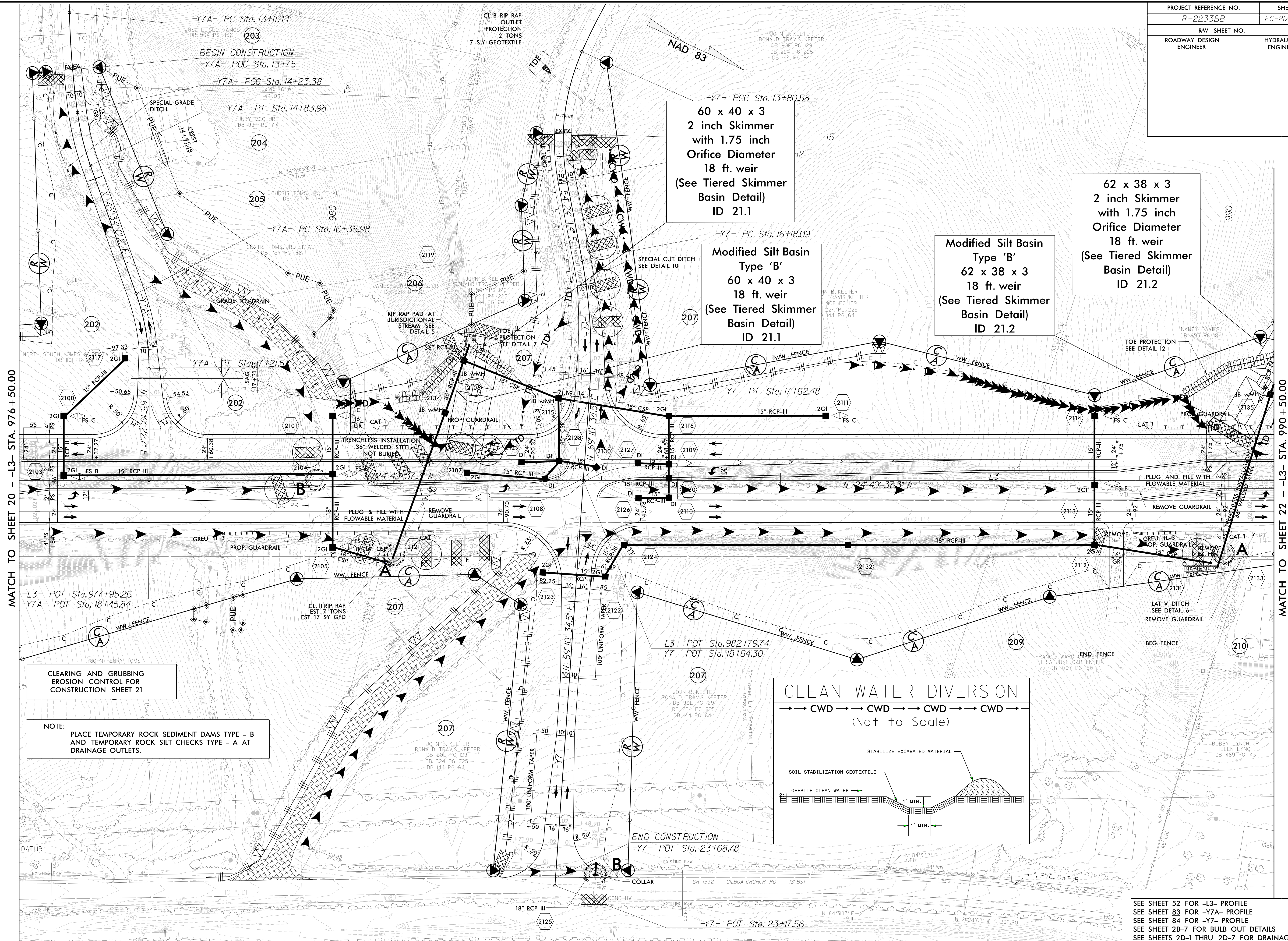


PROJECT REFERENCE NO.		SHEET NO.	
R-2233BB		EC-21/CONST.21	
RW SHEET NO.			
ROADWAY DESIGN ENGINEER		HYDRAULICS ENGINEER	



60 x 40 x 3  
2 inch Skimmer  
with 1.75 inch  
Orifice Diameter  
18 ft. weir  
(See Tiered Skimmer  
Basin Detail)  
ID 21.1

Modified Silt Basin  
Type 'B'  
60 x 40 x 3  
18 ft. weir  
(See Tiered Skimmer  
Basin Detail)  
ID 21.1

Modified Silt Basin  
Type 'B'  
62 x 38 x 3  
18 ft. weir  
(See Tiered Skimmer  
Basin Detail)  
ID 21.2

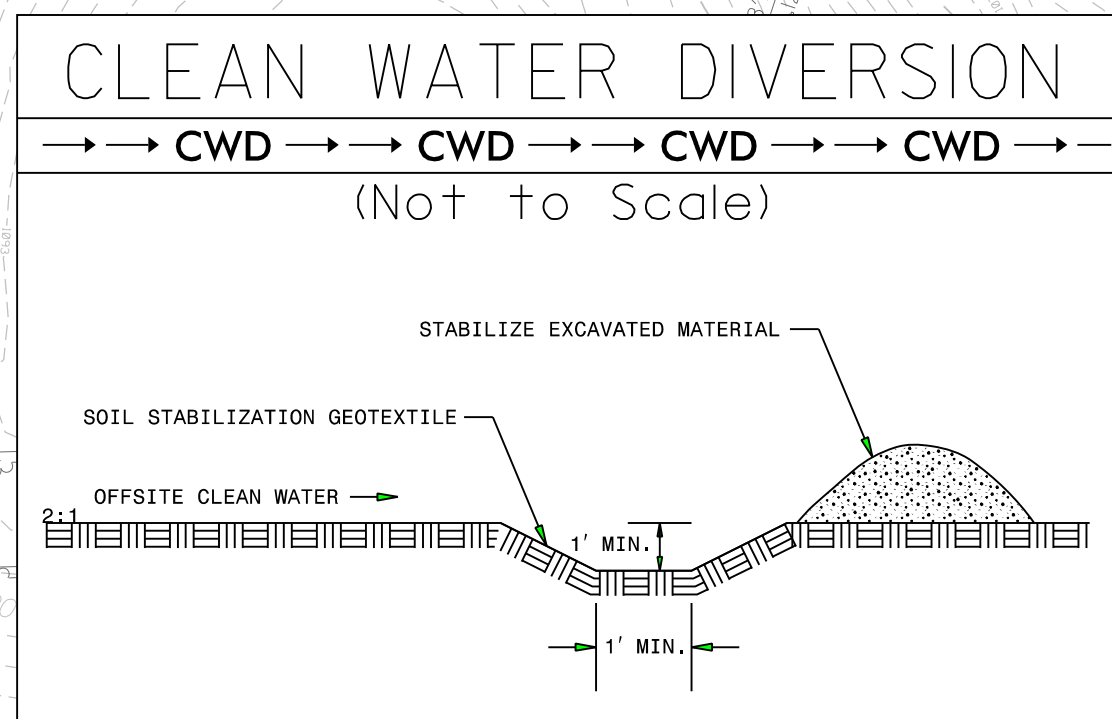
62 x 38 x 3  
2 inch Skimmer  
with 1.75 inch  
Orifice Diameter  
18 ft. weir  
(See Tiered Skimmer  
Basin Detail)  
ID 21.2

MATCH TO SHEET 20 - L3- STA. 976+50.00

MATCH TO SHEET 22 - L3- STA. 990+50.00

CLEARING AND GRUBBING  
EROSION CONTROL FOR  
CONSTRUCTION SHEET 21

NOTE:  
PLACE TEMPORARY ROCK SEDIMENT DAMS TYPE - B  
AND TEMPORARY ROCK SILT CHECKS TYPE - A AT  
DRAINAGE OUTLETS.



ROW REV. - December 21, 2017 - Parcel 203- added PUE line (WET).  
ROW REV. - December 21, 2017 - Parcel 228- Added PUE pins (WET).  
ROW REV. - December 21, 2017 - Parcel 229 - Added PUE pins (WET).

SEE SHEET 52 FOR -L3- PROFILE  
SEE SHEET 83 FOR -Y7A- PROFILE  
SEE SHEET 84 FOR -Y7- PROFILE  
SEE SHEET 2B-7 FOR BULB OUT DETAILS  
SEE SHEETS 2D-1 THRU 2D-7 FOR DRAINAGE DETAILS

3/16/2020  
5:44:33 PM  
3/16/2020  
5:44:33 PM  
3/16/2020  
5:44:33 PM