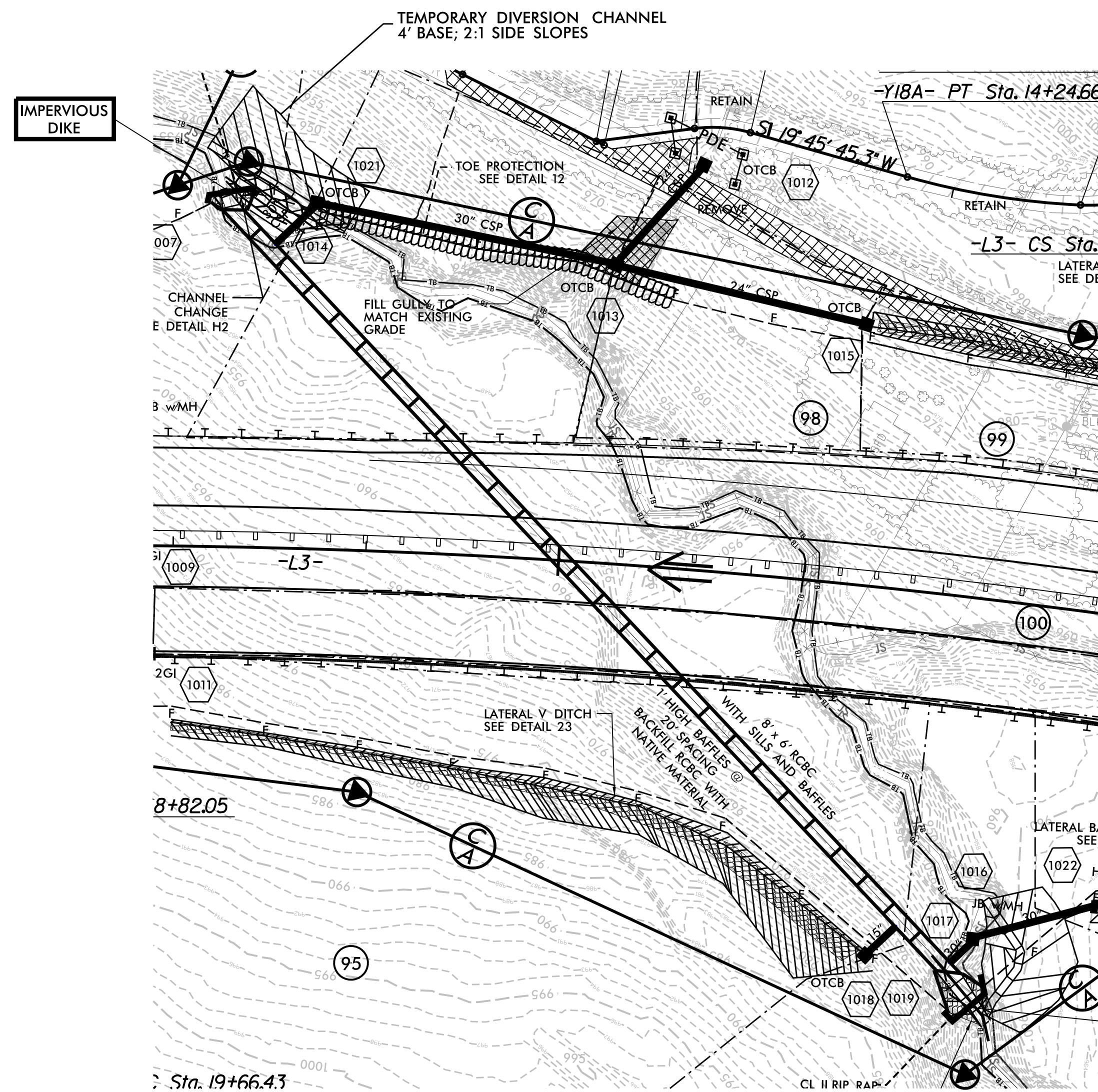
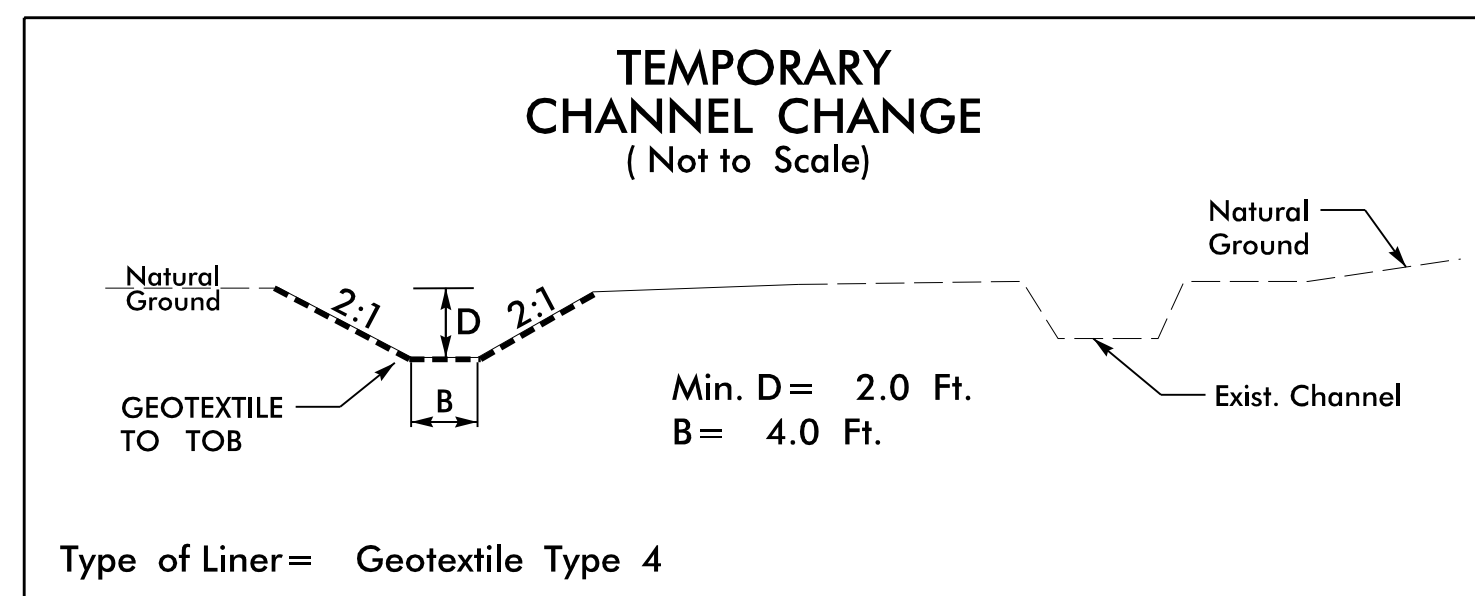


6'X6' RCBC CONSTRUCTION SEQUENCE STA. 830+00 -L3-

HDR Engineering, Inc. of the Carolinas
 555 Fayetteville St., Suite 900 Raleigh, N.C. 27601
 N.C.B.E.L.S. License Number: F-0116

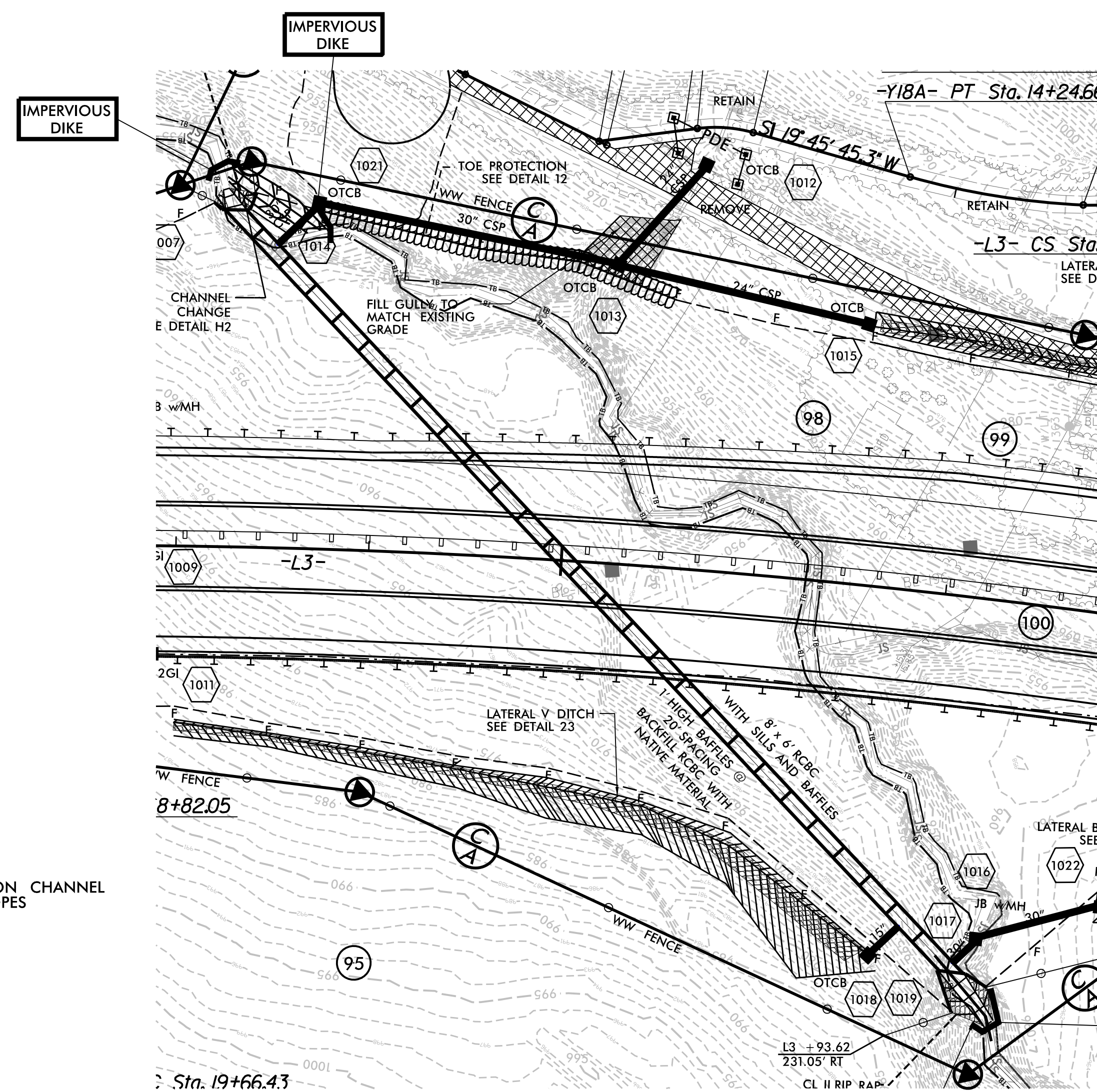
| | |
|-----------------------------------|------------------------------|
| PROJECT REFERENCE NO. R-2233BB | SHEET NO. EC-10A/CONST.10 |
| RW SHEET NO. | |
| ROADWAY DESIGN ENGINEER | HYDRAULICS ENGINEER |

NOT TO SCALE



PHASE I

1. INSTALL SPECIAL STILLING BASIN(S) AS NECESSARY.
2. CONSTRUCT BOTH 4' BASE TEMPORARY CHANNEL CHANGES WITH LINER.
3. INSTALL IMPERVIOUS DIKES AND DIRECT WATER FLOW AROUND THE WORK AREA DOWN THE CENTER OF THE TEMPORARY CHANNEL CHANGES ON THE NORTH SIDE OF THE FUTURE CULVERT.
4. CONSTRUCT CULVERT.



PHASE II

1. INSTALL SPECIAL STILLING BASIN(S) AS NECESSARY.
2. REMOVE PHASE I IMPERVIOUS DIKES AND TEMPORARY CHANNEL CHANGES.
3. INSTALL PHASE II IMPERVIOUS DIKES AND USE PUMPING OPERATION TO COMPLETE UPSTREAM AND DOWNSTREAM CHANNEL IMPROVEMENTS.
4. REMOVE IMPERVIOUS DIKES TO ESTABLISH FLOW THROUGH NEWLY CONSTRUCTED CULVERT.
5. REMOVE SPECIAL STILLING BASINS.