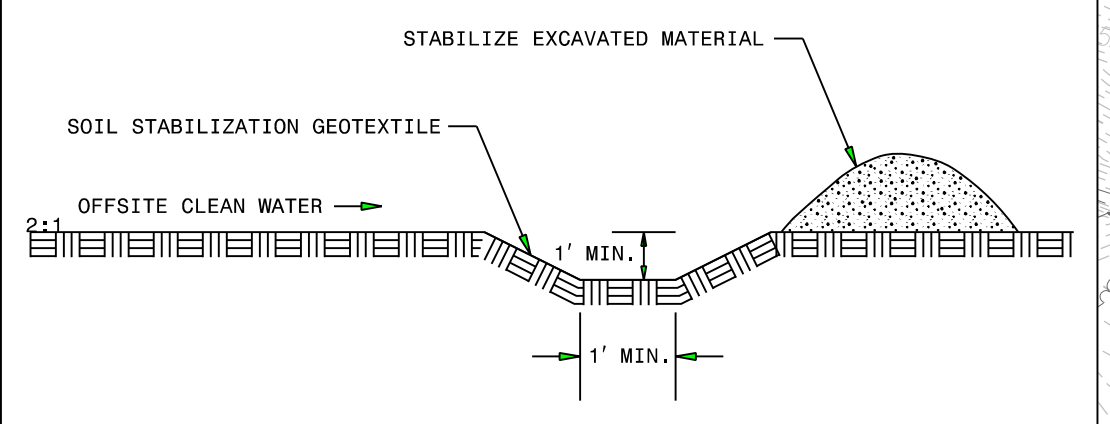


PROJECT REFERENCE NO.	SHEET NO.
R-2233BB	EC-10/CONST.10
RW SHEET NO.	
ROADWAY DESIGN ENGINEER	HYDRAULICS ENGINEER

CLEARING AND GRUBBING  
EROSION CONTROL FOR  
CONSTRUCTION SHEET 10

NOTE:  
PLACE TEMPORARY ROCK SEDIMENT DAMS TYPE - B  
AND TEMPORARY ROCK SILT CHECKS TYPE - A AT  
DRAINAGE OUTLETS.

**CLEAN WATER DIVERSION**  
→ CWD → CWD → CWD → CWD →  
(Not to Scale)



47 x 155 x 3  
2.5 inch Skimmer  
with 2.25 inch  
Orifice Diameter  
27 ft. weir  
ID 10.1

28 x 62 x 3  
1.5 inch Skimmer  
with 1.25 inch  
Orifice Diameter  
7 ft. weir  
ID 10.2

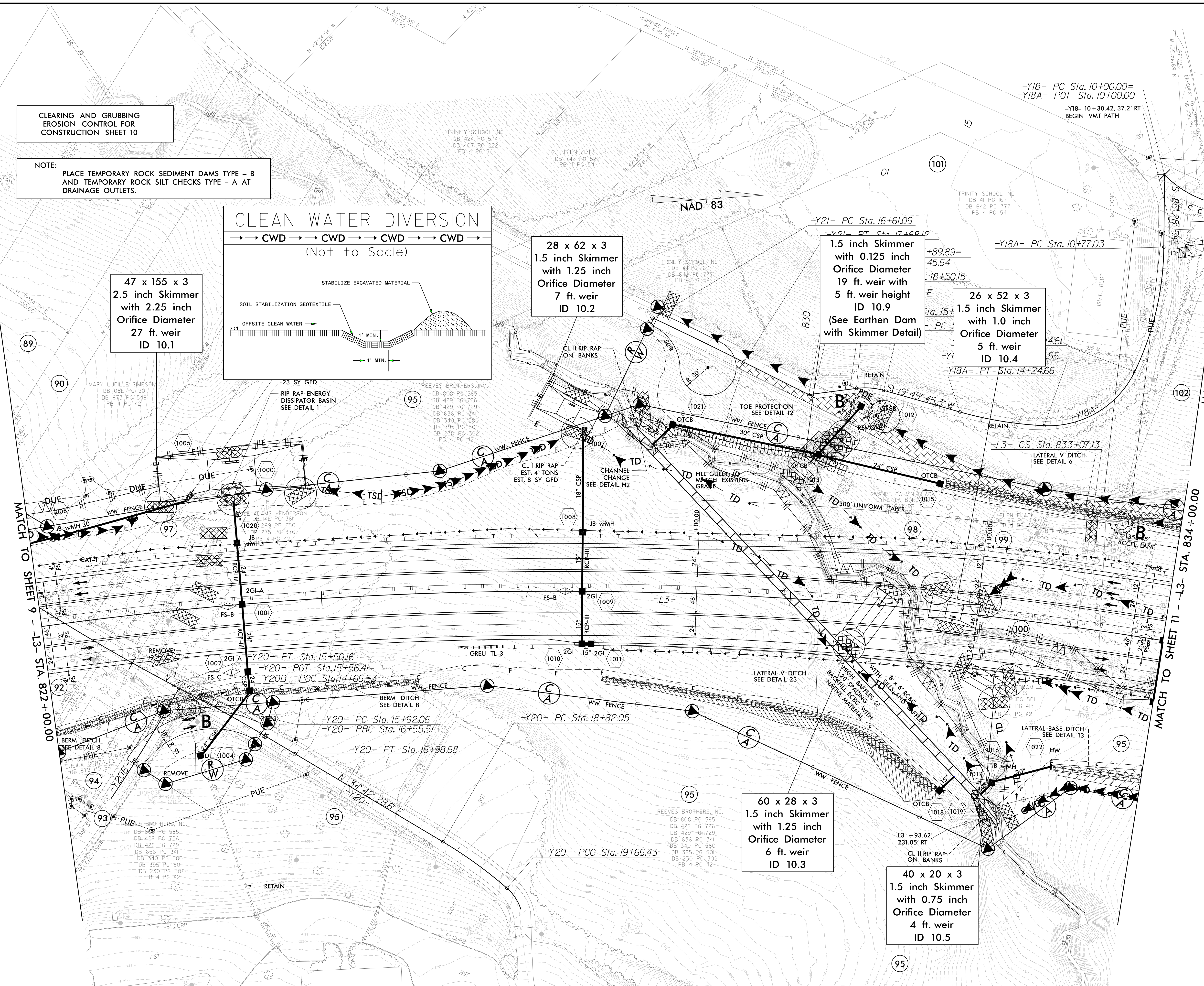
1.5 inch Skimmer  
with 0.125 inch  
Orifice Diameter  
19 ft. weir with  
5 ft. weir height  
ID 10.9  
(See Earthen Dam  
with Skimmer Detail)

26 x 52 x 3  
1.5 inch Skimmer  
with 1.0 inch  
Orifice Diameter  
5 ft. weir  
ID 10.4

60 x 28 x 3  
1.5 inch Skimmer  
with 1.25 inch  
Orifice Diameter  
6 ft. weir  
ID 10.3

40 x 20 x 3  
1.5 inch Skimmer  
with 0.75 inch  
Orifice Diameter  
4 ft. weir  
ID 10.5

ROW REV. - December 21, 2017 - Parcel 95 - Revised PUE line to RW line (WET)  
ROW REV. - March 2, 2018 - Parcel 101 - Moved PUE off of school classroom (WET)  
ROW REV. - June 19, 2018 - Parcel 102 - Adjust boundary line & removed existing easement line (AAMP)  
ROW REV. - June 19, 2018 - Parcel 103 - Adjust boundary line & removed existing easement line (AAMP)  
ROW REV. - June 19, 2018 - Parcel 102 - Property owner name changed to Parton Family, LLC (AAMP)



SEE SHEET 40 FOR -L3- PROFILE  
SEE SHEET 74 FOR -Y18- PROFILE  
SEE SHEETS 2D-1 THRU 2D-7 FOR DRAINAGE DETAILS