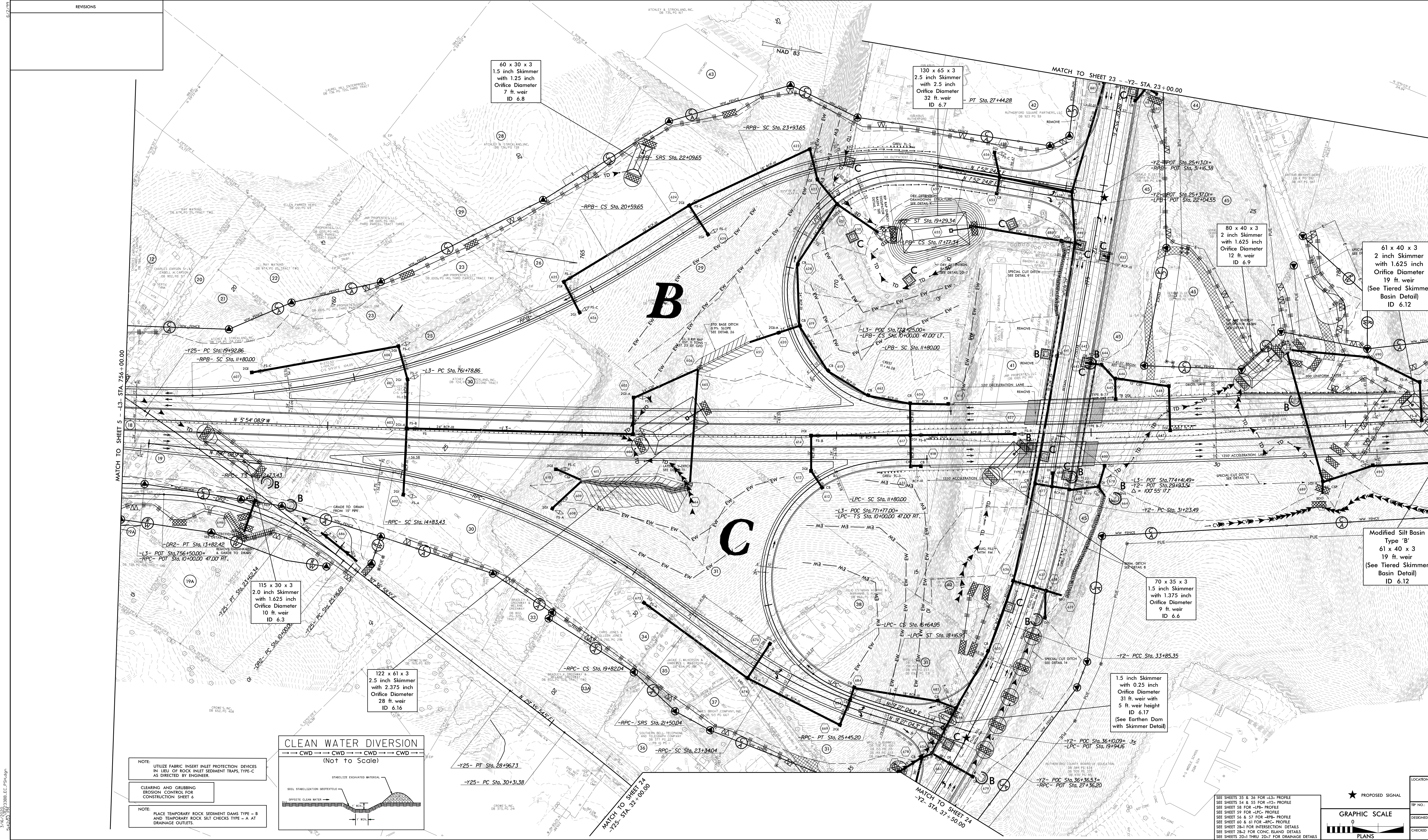


NO.	REVISIONS

PROJECT REFERENCE NO. P-223388	SHEET NO. EC-6/CWST-6
ROADWAY DESIGN ENGINEER	HYDRAULICS ENGINEER

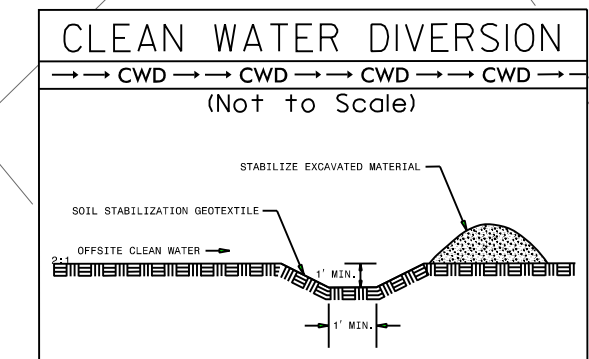
TRAFFIC DATA	
B 10 13	A 12 15
C 33 57	D 94 102
<small>QUANTITATIVE ANALYSIS IN ACCORDANCE WITH AASHTO 1992, 255 *FPM, W. 009</small>	



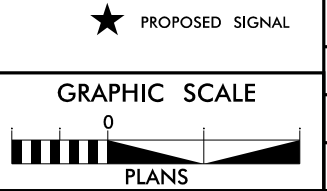
NOTE: UTILIZE FABRIC INSERT INLET PROTECTION DEVICES IN LIEU OF ROCK INLET SEDIMENT TRAPS, TYPE-C AS DIRECTED BY ENGINEER.

CLEARING AND GRUBBING EROSION CONTROL FOR CONSTRUCTION SHEET 6

NOTE: PLACE TEMPORARY ROCK SEDIMENT DAMS TYPE - B AND TEMPORARY ROCK SILT CHECKS TYPE - A AT DRAINAGE OUTLETS.



SEE SHEETS 35 & 36 FOR -L3- PROFILE
SEE SHEETS 34 & 35 FOR -Y2- PROFILE
SEE SHEET 58 FOR -LPC- PROFILE
SEE SHEET 59 FOR -LPC- PROFILE
SEE SHEET 58 & 57 FOR -RPS- PROFILE
SEE SHEET 60 & 61 FOR -RPC- PROFILE
SEE SHEET 38-1 FOR INTERSECTION DETAILS
SEE SHEET 78-2 FOR CONC. ISLAND DETAILS
SEE SHEETS 20-1 THRU 20-7 FOR GRANNAGE DETAILS



PROPOSED SIGNAL	LOCATION:
TR. NO.:	COUNTY:
DESIGNED BY:	CHECKED BY:
DATE:	DATE: