

09.08/99

TIP PROJECT: U-2579AB

STATE OF NORTH CAROLINA
DIVISION OF HIGHWAYS

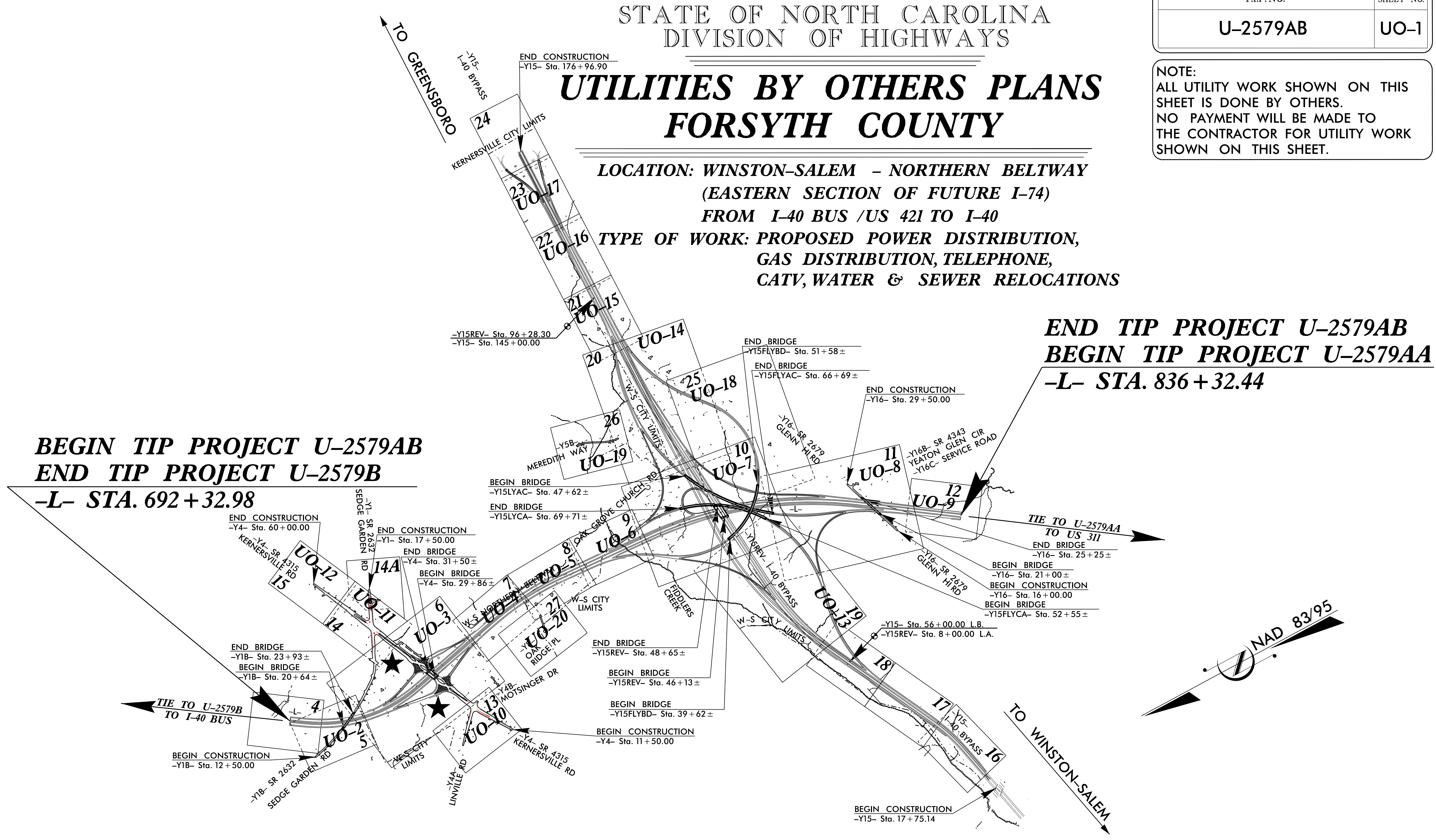
UTILITIES BY OTHERS PLANS
FORSYTH COUNTY

LOCATION: WINSTON-SALEM - NORTHERN BELTWAY
(EASTERN SECTION OF FUTURE I-74)
FROM I-40 BUS /US 421 TO I-40

TYPE OF WORK: PROPOSED POWER DISTRIBUTION,
GAS DISTRIBUTION, TELEPHONE,
CATV, WATER & SEWER RELOCATIONS

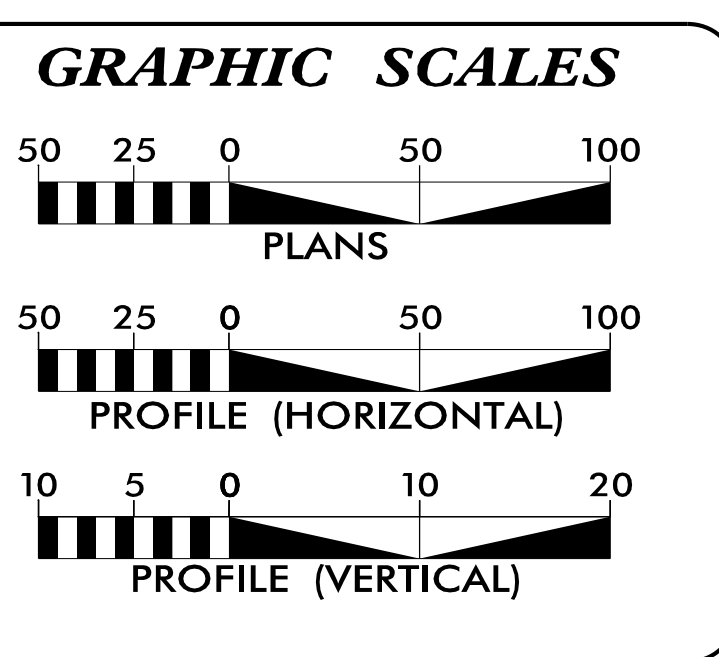
T.I.P. NO.	SHEET NO.
U-2579AB	UO-1

NOTE:
ALL UTILITY WORK SHOWN ON THIS SHEET IS DONE BY OTHERS.
NO PAYMENT WILL BE MADE TO THE CONTRACTOR FOR UTILITY WORK SHOWN ON THIS SHEET.



BEGIN TIP PROJECT U-2579AB
END TIP PROJECT U-2579B
-L- STA. 692 + 32.98

END TIP PROJECT U-2579AB
BEGIN TIP PROJECT U-2579AA
-L- STA. 836 + 32.44



INDEX OF SHEETS

SHEET NO.:	DESCRIPTION:
UO-1	TITLE SHEET
UO-2 TO UO-20	UBO PLAN SHEETS

- UTILITY OWNERS WITH CONFLICTS**
- (A) DUKE ENERGY - POWER (DISTRIBUTION)
 - (B) AT&T - COMMUNICATIONS
 - (C) CHARTER - COMMUNICATIONS
 - (D) NORTH STATE - COMMUNICATIONS
 - (E) PIEDMONT NATURAL GAS - GAS
 - (F) CITY OF WINSTON SALEM - WATER & SEWER

PREPARED IN THE OFFICE OF:

JOHN FAISON UTILITY PROJECT MANAGER
JOHN FAISON PROJECT UTILITY COORDINATOR
SAWYER WALTERS PROJECT UTILITY DESIGNER

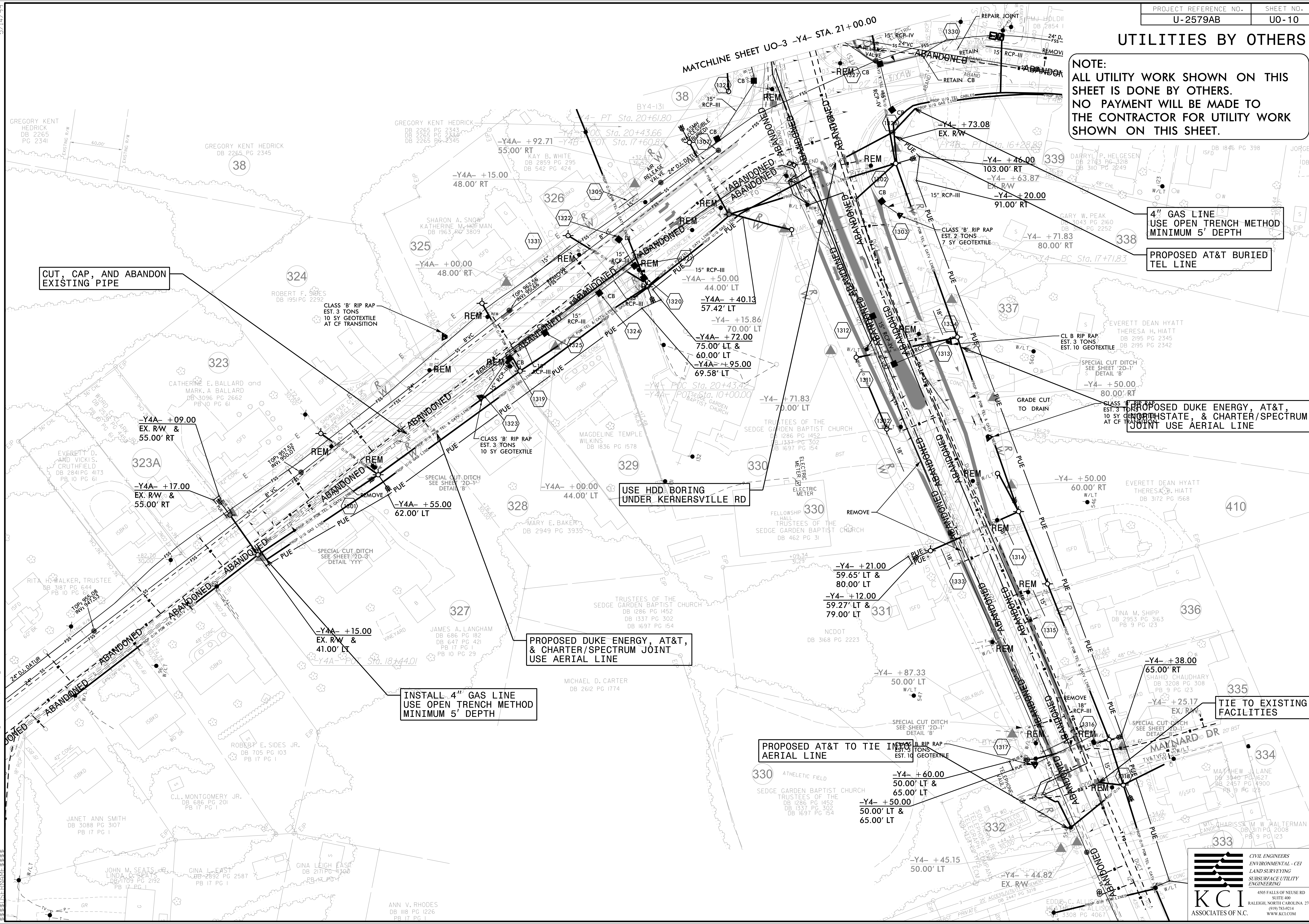
DIVISION OF HIGHWAYS UTILITIES UNIT
1555 MAIL SERVICES CENTER
RALEIGH, NC 27699-1555
PHONE (919) 707-6690
FAX (919) 250-4151

DONNA JACKSON, PE CENTRAL UTILITIES MANAGER
TUCKER MARTIN, PE SENIOR UTILITIES ENGINEER
KYLE PLEASANT REGIONAL UTILITY COORDINATOR
TANGA SAMPSON SENIOR UTILITY COORDINATOR

23-OCT-2020 09:57
M:\2010\050058\AK-U2579AB-Forsyth Co\Utilities\290_001_U2579AB_ut_tsh_U001.psh.dgn
\$\$\$\$\$SERVNAME\$\$\$\$\$

UTILITIES BY OTHERS

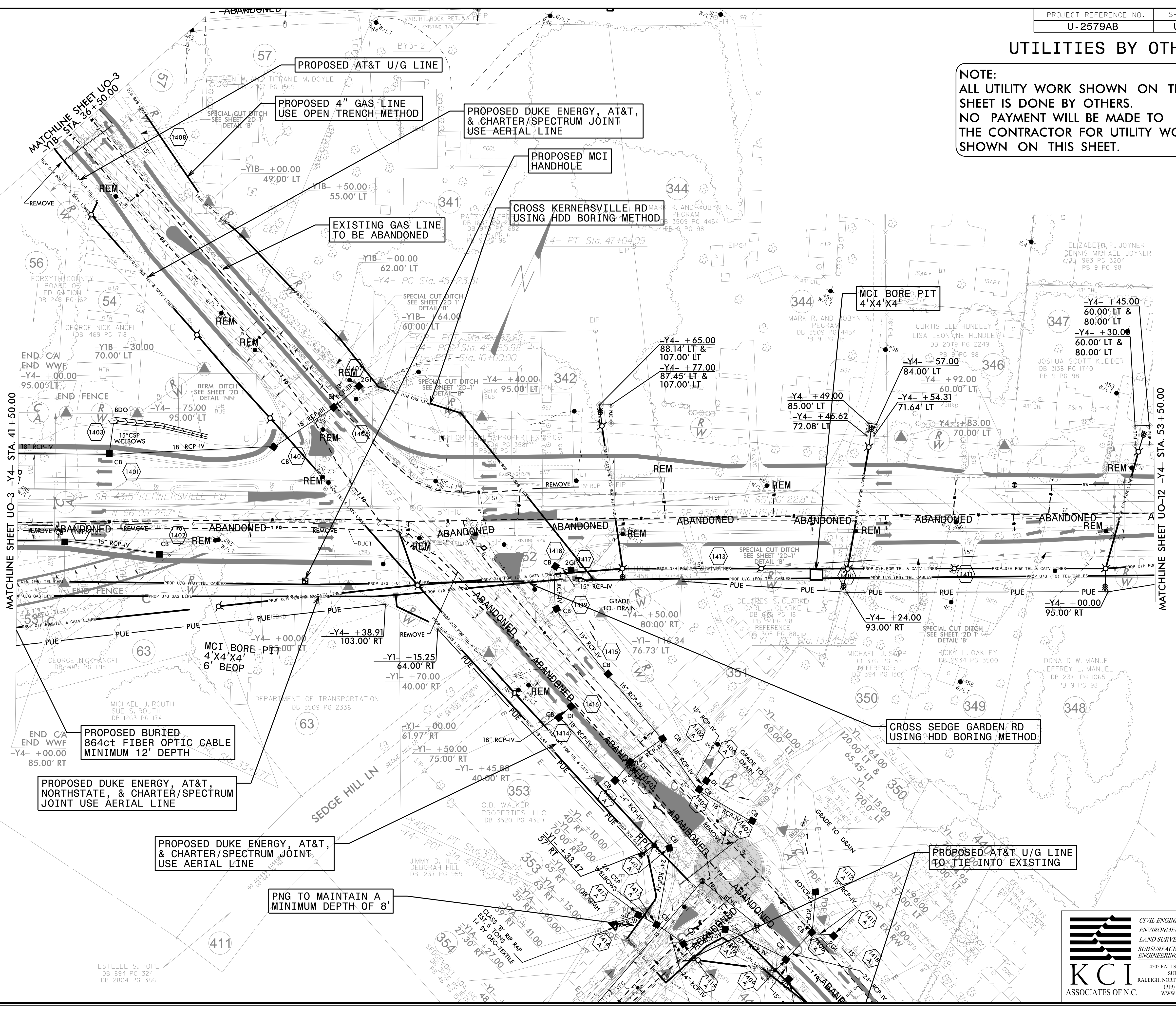
NOTE:
ALL UTILITY WORK SHOWN ON THIS SHEET IS DONE BY OTHERS.
NO PAYMENT WILL BE MADE TO THE CONTRACTOR FOR UTILITY WORK SHOWN ON THIS SHEET.



5/14/99
 U2579AB.dwg
 10 JUL 2001 15:32
 U:\11\traces\290.010.U2579AB.ut.edj\3.U010_psh.dgn

UTILITIES BY OTHERS

NOTE:
 ALL UTILITY WORK SHOWN ON THIS SHEET IS DONE BY OTHERS.
 NO PAYMENT WILL BE MADE TO THE CONTRACTOR FOR UTILITY WORK SHOWN ON THIS SHEET.



MATCHLINE SHEET UO-3 -Y4- STA. 41+50.00

MATCHLINE SHEET UO-12 -Y4- STA. 53+50.00

PROPOSED BURIED 864ct FIBER OPTIC CABLE MINIMUM 12' DEPTH

PROPOSED DUKE ENERGY, AT&T, NORTHSTATE, & CHARTER/SPECTRUM JOINT USE AERIAL LINE

PROPOSED DUKE ENERGY, AT&T, & CHARTER/SPECTRUM JOINT USE AERIAL LINE

PNG TO MAINTAIN A MINIMUM DEPTH OF 8'

PROPOSED MCI HANDHOLE

CROSS KERNERSVILLE RD USING HDD BORING METHOD

MCI BORE PIT 4'X4'X4'

CROSS SEDGE GARDEN RD USING HDD BORING METHOD

PROPOSED AT&T U/G LINE TO TIE INTO EXISTING

PROPOSED AT&T U/G LINE

PROPOSED 4" GAS LINE USE OPEN TRENCH METHOD

PROPOSED DUKE ENERGY, AT&T, & CHARTER/SPECTRUM JOINT USE AERIAL LINE

EXISTING GAS LINE TO BE ABANDONED

5/14/99

U-2579AB_U0-11.dwg 11:25:29 AM 5/14/99

KCI
 ASSOCIATES OF N.C.

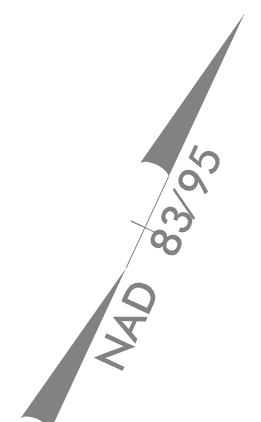
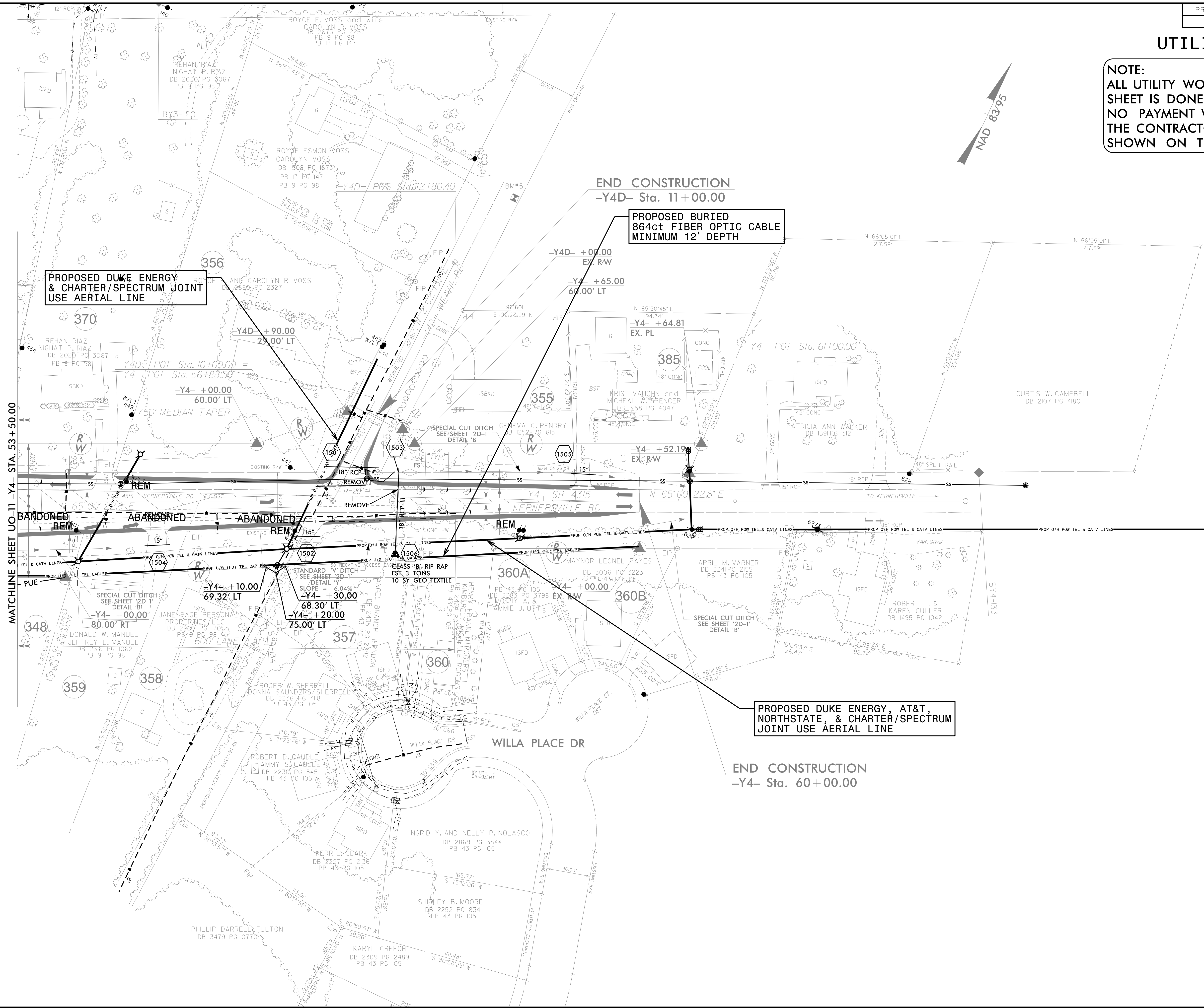
CIVIL ENGINEERS
 ENVIRONMENTAL - CEI
 LAND SURVEYING
 SUBSURFACE UTILITY
 ENGINEERING

4505 FALLS OF NEUSE RD
 SUITE 400
 RALEIGH, NORTH CAROLINA 27609
 (919) 783-9214
 WWW.KCI.COM

UTILITIES BY OTHERS

NOTE:
 ALL UTILITY WORK SHOWN ON THIS SHEET IS DONE BY OTHERS.
 NO PAYMENT WILL BE MADE TO THE CONTRACTOR FOR UTILITY WORK SHOWN ON THIS SHEET.

5/14/99
 U-2579AB.dwg
 15:30
 11/11/11
 2579AB.dwg
 012_U2579AB_ut_rdy15_U012_psh.dgn



**PROPOSED BURIED
 864ct FIBER OPTIC CABLE
 MINIMUM 12' DEPTH**

**PROPOSED DUKE ENERGY
 & CHARTER/SPECTRUM JOINT
 USE AERIAL LINE**

**PROPOSED DUKE ENERGY, AT&T,
 NORTHSTATE, & CHARTER/SPECTRUM
 JOINT USE AERIAL LINE**

**END CONSTRUCTION
 -Y4- Sta. 60+00.00**

**END CONSTRUCTION
 -Y4D- Sta. 11+00.00**

**CIVIL ENGINEERS
 ENVIRONMENTAL - CEI
 LAND SURVEYING
 SUBSURFACE UTILITY
 ENGINEERING**

4505 FALLS OF NEUSE RD
 SUITE 400
 RALEIGH, NORTH CAROLINA 27609
 (919) 783-9214
 WWW.KCI.COM

UTILITIES BY OTHERS

NOTE:
ALL UTILITY WORK SHOWN ON THIS SHEET IS DONE BY OTHERS.
NO PAYMENT WILL BE MADE TO THE CONTRACTOR FOR UTILITY WORK SHOWN ON THIS SHEET.

5/14/99
U-2579AB_UO-13.dwg
JUL-2021 15:41
C:\projects\1111\traces\290.013_U2579AB_ut_rdy\19_U013_psh.dgn

