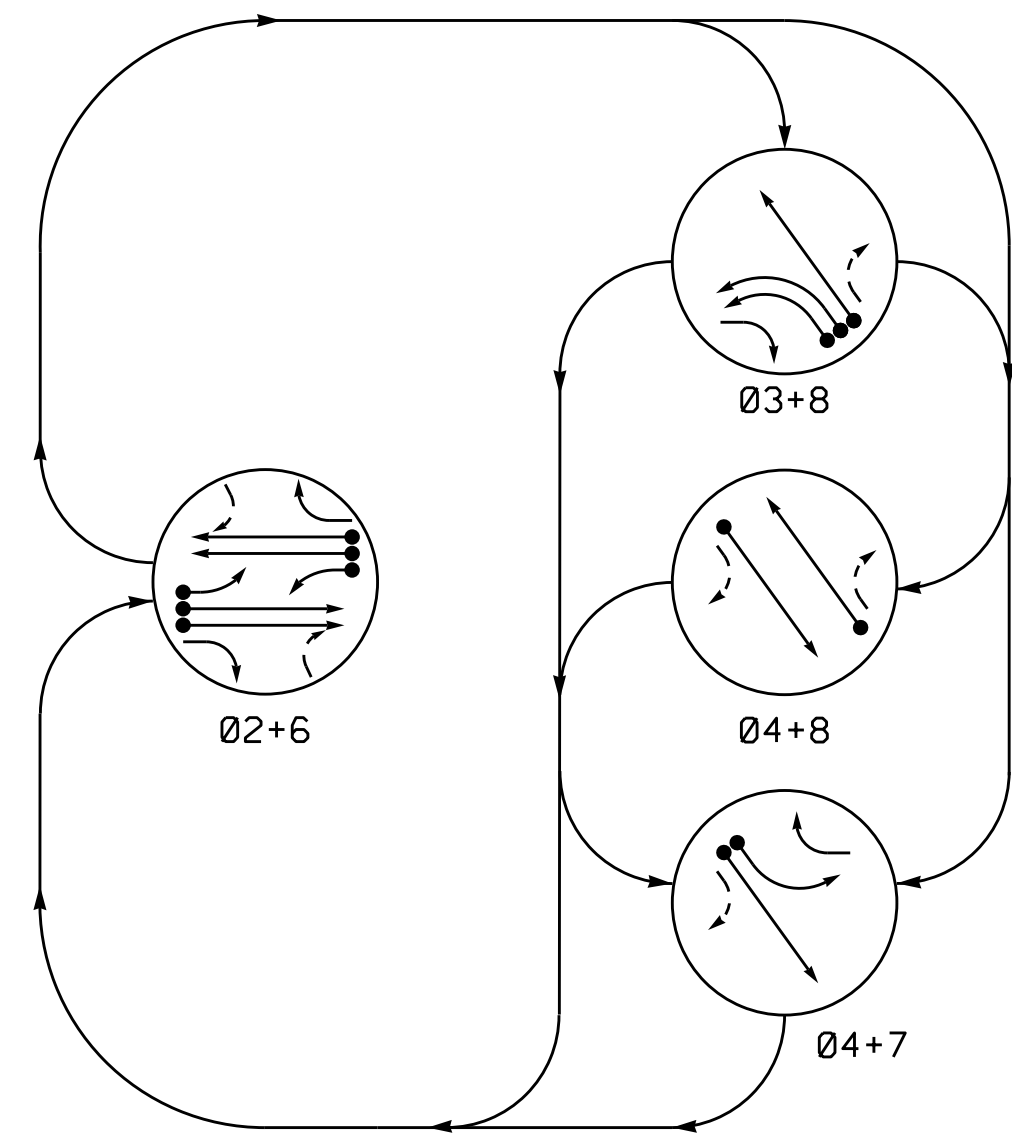


PHASING DIAGRAM



PHASING DIAGRAM DETECTION LEGEND

- DETECTED MOVEMENT
- UNDETECTED MOVEMENT (OVERLAP)
- UNSIGNALIZED MOVEMENT
- PEDESTRIAN MOVEMENT

TABLE OF OPERATION

SIGNAL FACE	PHASE				
	02+6	03+8	04+8	04+7	PEDESTRIAN
21	Y	R	R	R	Y
22	G	R	R	R	Y
23	G	R	R	R	Y
31, 32, 33	R	R	R	R	R
41, 42, 43	R	R	G	G	R
61	Y	R	R	R	Y
62	G	R	R	R	Y
63	G	R	R	R	Y
71, 72	R	R	R	R	R
81, 82, 83	R	G	G	R	R

OASIS 2070 LOOP & DETECTOR INSTALLATION CHART

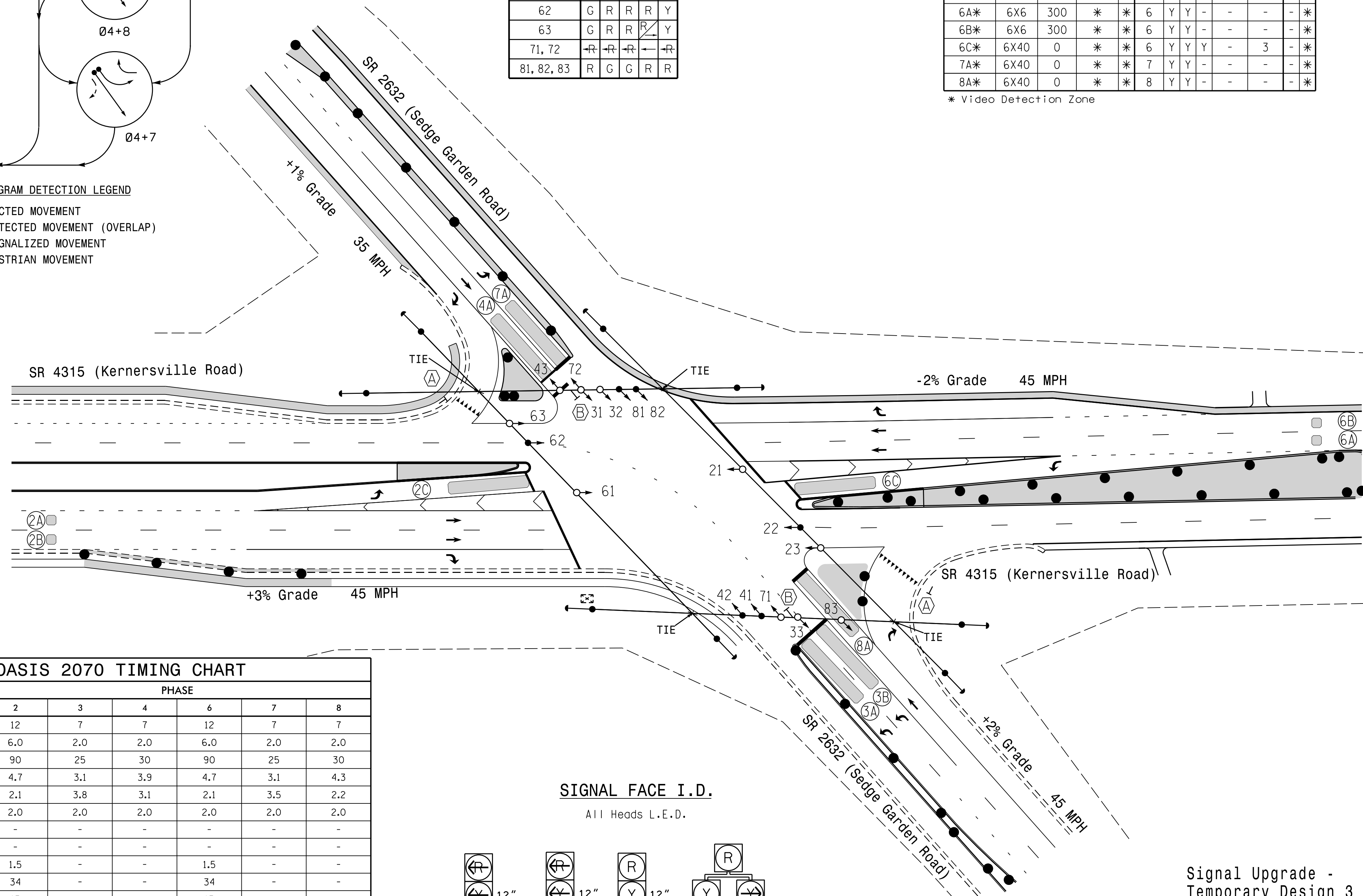
ZONE	SIZE (FT)	DISTANCE FROM STOPBAR (FT)	TURNS	NEW LOOP	DETECTOR PROGRAMMING							
					PHASE	CALLING	EXTENSION	FULL TIME DELAY	STRETCH TIME	DELAY TIME	SYSTEM LOOP	NEW CARD
2A*	6X6	300	*	*	2	Y	Y	-	-	-	-	*
2B*	6X6	300	*	*	2	Y	Y	-	-	-	-	*
2C*	6X40	0	*	*	2	Y	Y	Y	-	3	-	*
3A*	6X40	0	*	*	3	Y	Y	-	-	-	-	*
3B*	6X40	0	*	*	3	Y	Y	-	-	-	-	*
4A*	6X40	0	*	*	4	Y	Y	-	-	-	-	*
6A*	6X6	300	*	*	6	Y	Y	-	-	-	-	*
6B*	6X6	300	*	*	6	Y	Y	-	-	-	-	*
6C*	6X40	0	*	*	6	Y	Y	Y	-	3	-	*
7A*	6X40	0	*	*	7	Y	Y	-	-	-	-	*
8A*	6X40	0	*	*	8	Y	Y	-	-	-	-	*

* Video Detection Zone

4 Phase Fully Actuated (Winston-Salem Signal System)

NOTES

- Refer to "Roadway Standard Drawings NCDOT" dated January 2018 and "Standard Specifications for Roads and Structures" dated January 2018.
- Do not program signal for late night flashing operation unless otherwise directed by the Engineer.
- The order of phase 3 and phase 7 may be reversed, but phase 3 and phase 7 shall not operate simultaneously.
- Reposition existing signal heads as shown.
- Set all detector units to presence mode.
- This intersection uses video detection. Install detectors according to the manufacturer's instructions to achieve the desired detection.
- Maximum times shown in timing chart are for free-run operation only. Coordinated signal system timing values supersede these values.



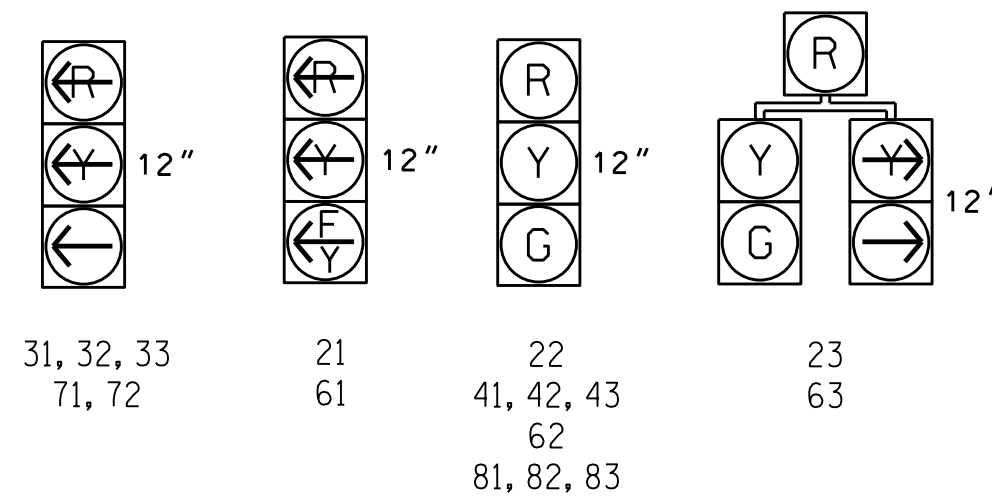
OASIS 2070 TIMING CHART

FEATURE	PHASE					
	2	3	4	6	7	8
Min Green 1 *	12	7	7	12	7	7
Extension 1 *	6.0	2.0	2.0	6.0	2.0	2.0
Max Green 1 *	90	25	30	90	25	30
Yellow Clearance	4.7	3.1	3.9	4.7	3.1	4.3
Red Clearance	2.1	3.8	3.1	2.1	3.5	2.2
Red Revert	2.0	2.0	2.0	2.0	2.0	2.0
Walk 1 *	-	-	-	-	-	-
Don't Walk 1	-	-	-	-	-	-
Seconds Per Actuation *	1.5	-	-	1.5	-	-
Max Variable Initial *	34	-	-	34	-	-
Time Before Reduction *	15	-	-	15	-	-
Time To Reduce *	45	-	-	45	-	-
Minimum Gap	3.0	-	-	3.0	-	-
Recall Mode	MIN RECALL	-	-	MIN RECALL	-	-
Vehicle Call Memory	YELLOW	-	-	YELLOW	-	-
Dual Entry	-	-	-	-	-	-
Simultaneous Gap	ON	ON	ON	ON	ON	ON

* These values may be field adjusted. Do not adjust Min Green and Extension times for phases 2 and 6 lower than what is shown. Min Green for all other phases should not be lower than 4 seconds.

SIGNAL FACE I.D.

All Heads L.E.D.



LEGEND

- | PROPOSED | EXISTING |
|--|--|
| ○ Traffic Signal Head | ● Traffic Signal Head |
| ● Modified Signal Head | N/A |
| ○ Sign | N/A |
| ○ Pedestrian Signal Head With Push Button & Sign | ○ Pedestrian Signal Head |
| ○ Signal Pole with Guy | ○ Signal Pole with Guy |
| ○ Signal Pole with Sidewalk Guy | ○ Signal Pole with Sidewalk Guy |
| ○ Inductive Loop Detector | ○ Inductive Loop Detector |
| ○ Video Detection Zone | N/A |
| ○ Controller & Cabinet | ○ Controller & Cabinet |
| ○ Junction Box | ○ Junction Box |
| ○ 2-in Underground Conduit | ○ 2-in Underground Conduit |
| ○ Right of Way | ○ Right of Way |
| ○ Construction Zone Drums | ○ Construction Zone Drums |
| ○ Construction Zone | ○ Construction Zone |
| ○ "YIELD" Sign (R1-2) | ○ "YIELD" Sign (R1-2) |
| ○ "U-TURN YIELD TO RIGHT TURN" Sign (R10-16) | ○ "U-TURN YIELD TO RIGHT TURN" Sign (R10-16) |

Signal Upgrade - Temporary Design 3 (TMP Area 3 Phase 3)

750 N. Greenfield Pkwy, Garner, NC 27529

SR 4315 (Kernersville Road)
at
SR 2632 (Sedge Garden Road)

Division 9 Forsyth County Winston-Salem

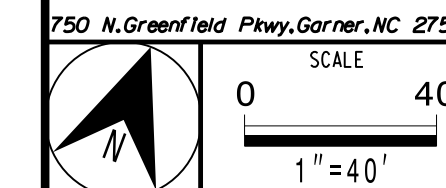
PLAN DATE: May 2021 REVIEWED BY:

PREPARED BY: I. O. Umzurike REVIEWED BY:

DOCUMENT NOT CONSIDERED FINAL UNLESS ALL SIGNATURES COMPLETED

SEAL

7/7/2021



REVISIONS	INIT.	DATE

SIGNATURE	DATE