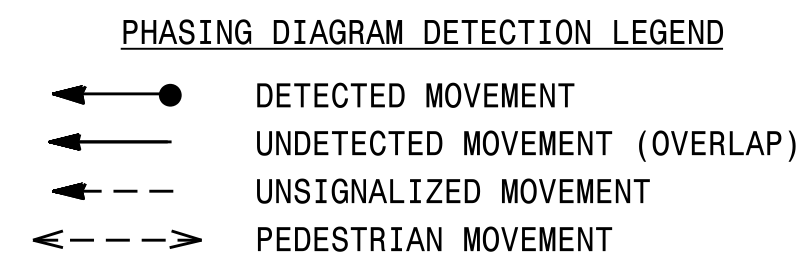
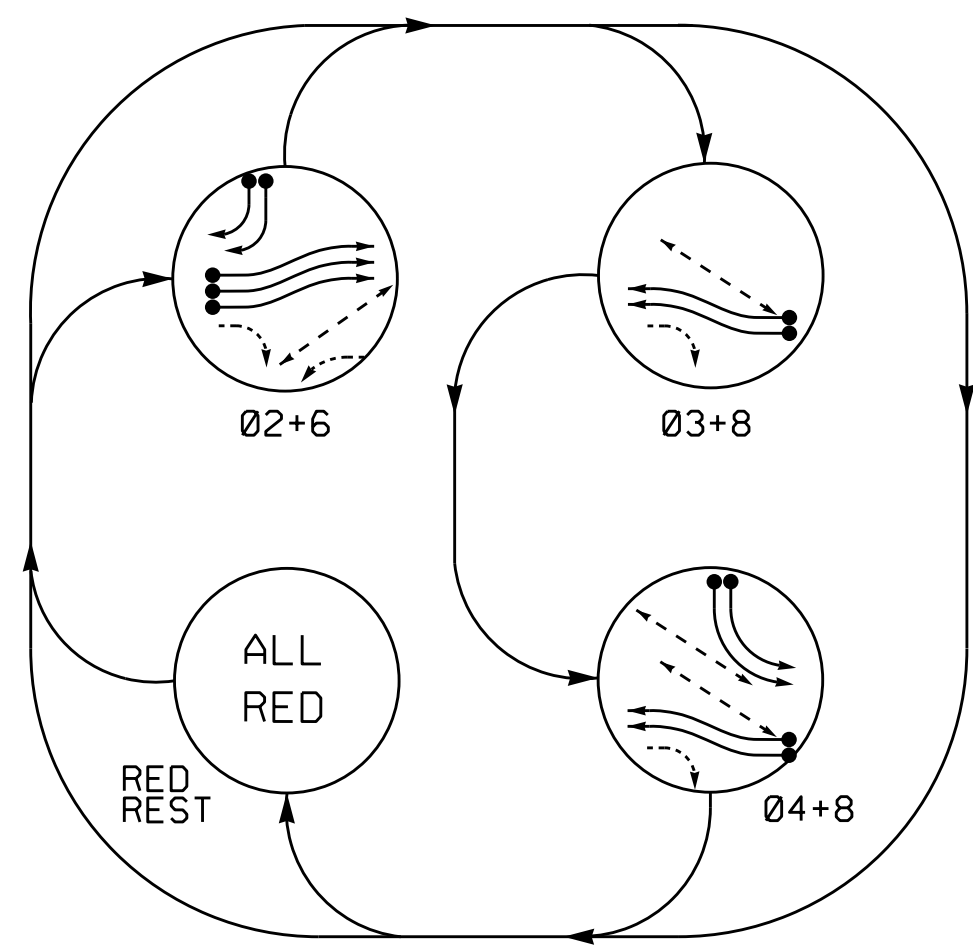


PHASING DIAGRAM

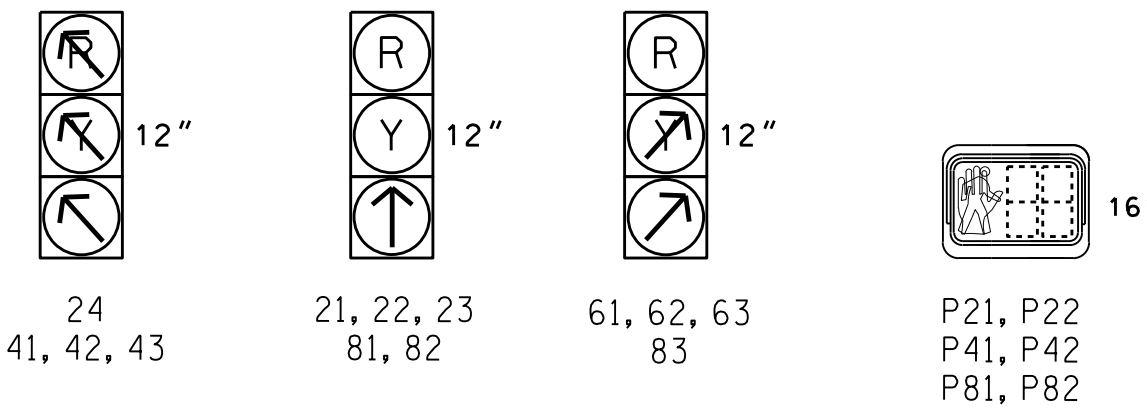


SIGNAL FACE	PHASE				
	02+6	03+8	04+8	ALL RED	RED REST
21, 22, 23	R	R	R	R	R
24	R	R	R	R	R
41, 42, 43	R	R	R	R	R
61, 62, 63	R	R	R	R	R
81, 82	R	R	R	R	R
83	R	R	R	R	R
P21, P22	W	DW	DW	DRK	DRK
P41, P42	DW	DW	W	DW	DRK
P81, P82	DW	W	W	DW	DRK

W - Walk  
DW - Don't Walk  
DRK - Dark

SIGNAL FACE I.D.

All Heads L.E.D.



OASIS 2070 LOOP & DETECTOR INSTALLATION CHART

LOOP	SIZE (FT)	DISTANCE FROM STOPBAR (FT)	TURNS	NEW LOOP	DETECTOR PROGRAMMING					SYSTEM LOOP	NEW CARD	
					PHASE	CALLING	EXTENSION	STRETCH TIME	DELAY TIME			
2A	6X6	300	4	Y	2	Y	Y	-	-	-	-	Y
2B	6X6	300	4	-	2	Y	Y	-	-	-	-	-
2C	6X40	300	4	-	2	Y	Y	-	-	-	-	-
2D	6X40	0	2-4-2	Y	2	Y	Y	2.0	5	-	-	Y
2E	6X40	0	2-4-2	-	2	Y	Y	2.0	5	-	-	-
2F	6X40	0	2-4-2	-	2	Y	Y	2.0	5	-	-	-
4A	6X40	0	2-4-2	Y	3/4	Y	Y	-	-	-	-	Y
4B	6X40	0	2-4-2	Y	3/4	Y	Y	-	-	-	-	Y
6A	6X40	0	2-4-2	Y	6	Y	Y	-	-	-	-	Y
6B	6X40	0	2-4-2	Y	6	Y	Y	-	-	-	-	Y
8A	6X40	0	2-4-2	-	8	Y	Y	-	-	-	-	-
8B	6X40	0	2-4-2	-	8	Y	Y	-	-	-	-	-

3 Phase Fully Actuated (Winston-Salem Signal System)

NOTES

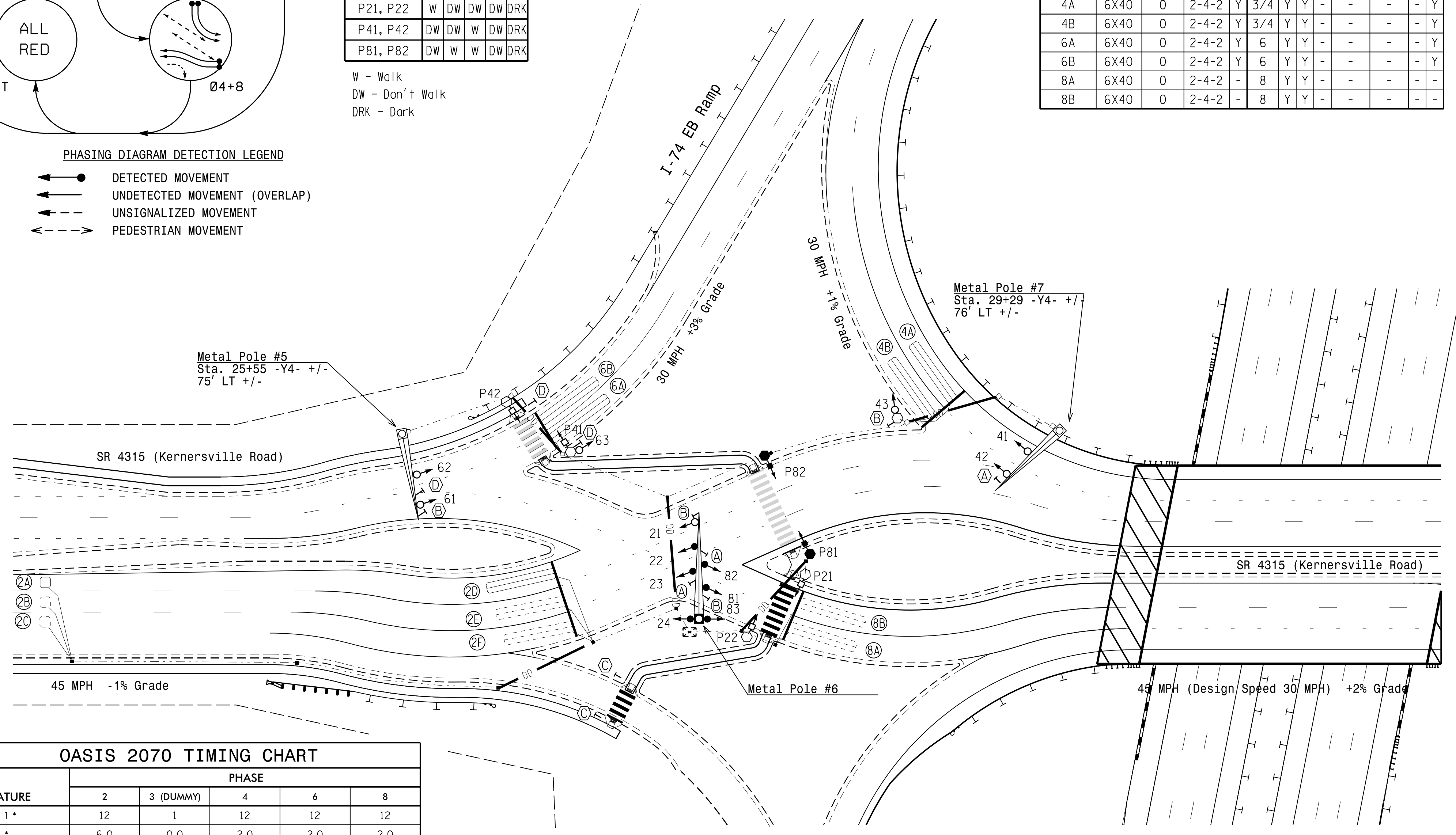
- Refer to "Roadway Standard Drawings NCDOT" dated January 2018 and "Standard Specifications for Roads and Structures" dated January 2018.
- Do not program signal for late night flashing operation unless otherwise directed by the Engineer.
- Program controller to clear from phase 2+6 to phase 4 by progressing through phase 3.
- Omit phase 3 during phase 4 on.
- Omit phase 4 during phase 2 on.
- Set all detector units to presence mode.
- Omit "WALK" and flashing "DON'T WALK" with no pedestrian calls.
- Program pedestrian heads to countdown the flashing "Don't Walk" time only.
- Program all phases for Red Rest.
- Program controller to start up in an all red interval followed by phase 2+6 green.
- Maximum times shown in timing chart are for free-run operation only. Coordinated signal system timing values supersede these values.

LEGEND

PROPOSED	EXISTING
	N/A
N/A	
N/A	
N/A	

FEATURE	PHASE				
	2	3 (DUMMY)	4	6	8
Min Green 1 *	12	1	12	12	12
Extension 1 *	6.0	0.0	2.0	2.0	2.0
Max Green 1 *	60	1	60	60	60
Yellow Clearance	4.6	3.6	3.5	3.4	3.4
Red Clearance	1.9	3.3	1.4	1.2	3.9
Walk 1 *	7	-	7	-	7
Don't Walk 1	6	-	6	-	11
Seconds Per Actuation *	-	-	-	-	-
Max Variable Initial *	-	-	-	-	-
Time Before Reduction *	10	-	-	-	-
Time To Reduce *	20	-	-	-	-
Minimum Gap	3.0	-	-	-	-
Recall Mode	-	-	-	-	-
Vehicle Call Memory	-	-	-	-	-
Dual Entry	ON	-	ON	ON	ON
Simultaneous Gap	ON	ON	ON	ON	ON
Red Rest	ON	ON	ON	ON	ON

\* These values may be field adjusted. Do not adjust Min Green and Extension times for phase 2 lower than what is shown. Min Green for all other phases should not be lower than 4 seconds.



Signal Upgrade - Final Design

750 N. Greenfield Pkwy, Garner, NC 27529

SR 4315 (Kernersville Road) at I-74 EB Ramps

Division 9 Forsyth County Winston-Salem

PLAN DATE: May 2021 REVIEWED BY:

PREPARED BY: I. O. Umozurike REVIEWED BY:

REVISIONS: \_\_\_\_\_ INIT. DATE

DOCUMENT NOT CONSIDERED FINAL UNLESS ALL SIGNATURES COMPLETED

SEAL

7/12/2021

DATE

SIGNATURE

SIG. INVENTORY NO. 09-0741

I:\Projects\2021\09-42\SR4315\Drawings\Signal\09-0741\090741\_01.dgn  
 15-JUL-2021 09:42  
 RZ:beroo