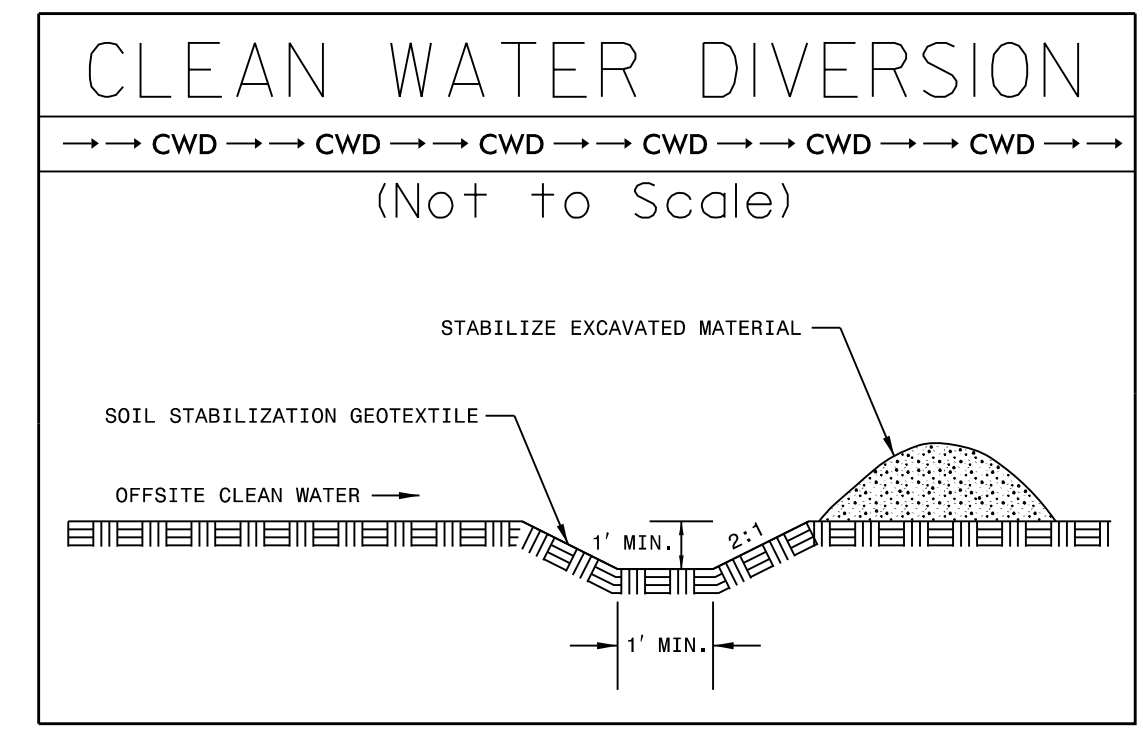


| | |
|-------------------------|---------------------|
| PROJECT REFERENCE NO. | SHEET NO. |
| U-2579AB | EC-48CONSTR. 21 |
| RW SHEET NO. | |
| ROADWAY DESIGN ENGINEER | HYDRAULICS ENGINEER |

HDR HDR Engineering, Inc. of the Carolinas
555 Fayetteville St. Suite 900 Raleigh, N.C. 27601
N.C.B.E.L.S. License Number: F-0116

Place Matting for Erosion Control
on Slope as Work Allows.
Sta. 145+00 to Sta. 149+00 -Y15- LT
Sta. 145+00 to Sta. 151+50 -Y15- RT
Sta. 89+00 to Sta. 96+28 -Y15REV- RT
Sta. 93+50 to Sta. 96+28 -Y15REV- LT



60 x 30 x 3
1.5 inch Skimmer
with 1.25 inch
Orifice Diameter
7 ft. weir
ID 21.6 B

90 x 43 x 3
2.0 inch Skimmer
with 1.625 inch
Orifice Diameter
30 ft. weir
ID 21.5 B

78 x 20 x 3
ID 21.8 F

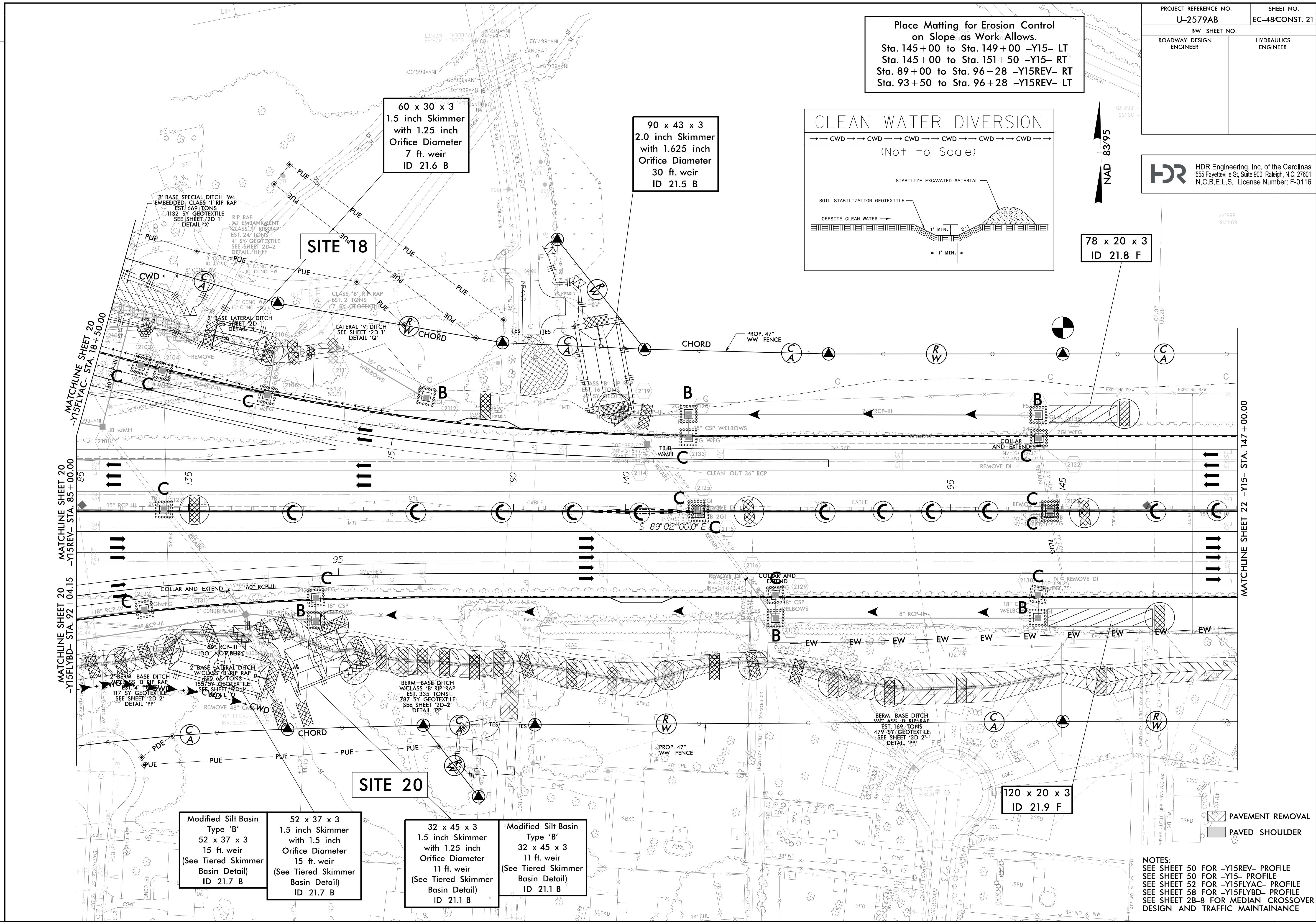
120 x 20 x 3
ID 21.9 F

Modified Silt Basin
Type 'B'
52 x 37 x 3
15 ft. weir
(See Tiered Skimmer
Basin Detail)
ID 21.7 B

52 x 37 x 3
1.5 inch Skimmer
with 1.5 inch
Orifice Diameter
15 ft. weir
(See Tiered Skimmer
Basin Detail)
ID 21.7 B

32 x 45 x 3
1.5 inch Skimmer
with 1.25 inch
Orifice Diameter
11 ft. weir
(See Tiered Skimmer
Basin Detail)
ID 21.1 B

Modified Silt Basin
Type 'B'
32 x 45 x 3
11 ft. weir
(See Tiered Skimmer
Basin Detail)
ID 21.1 B



PAVEMENT REMOVAL
PAVED SHOULDER

NOTES:
SEE SHEET 50 FOR -Y15REV- PROFILE
SEE SHEET 50 FOR -Y15- PROFILE
SEE SHEET 52 FOR -Y15FLYAC- PROFILE
SEE SHEET 58 FOR -Y15FLYBD- PROFILE
SEE SHEET 28-8 FOR MEDIAN CROSSOVER
DESIGN AND TRAFFIC MAINTAINANCE

REVISIONS
PLOT DRIVER: NCDOT_pdf_color_eng_100.pht
USER: MDIEHL
FILE: NCDOT\NCDOT-U2579AB\6.0.CAD.BTM\6.2.Work.In_Progress\U-2579AB\Erosion_Control\U2579ab_EC_PSH.dgn
PENTABLE: NCDOT_EC_FINAL_BW.tbl
DATE: 7/16/2021
TIME: 1:41:44 PM