

PROJECT REFERENCE NO.	SHEET NO.
U-2579AB	EC-45/CONST. 18
RW SHEET NO.	
ROADWAY DESIGN ENGINEER	HYDRAULICS ENGINEER

HDR HDR Engineering, Inc. of the Carolinas
 555 Fayetteville St. Suite 900 Raleigh, N.C. 27601
 N.C.B.E.L.S. License Number: F-0116

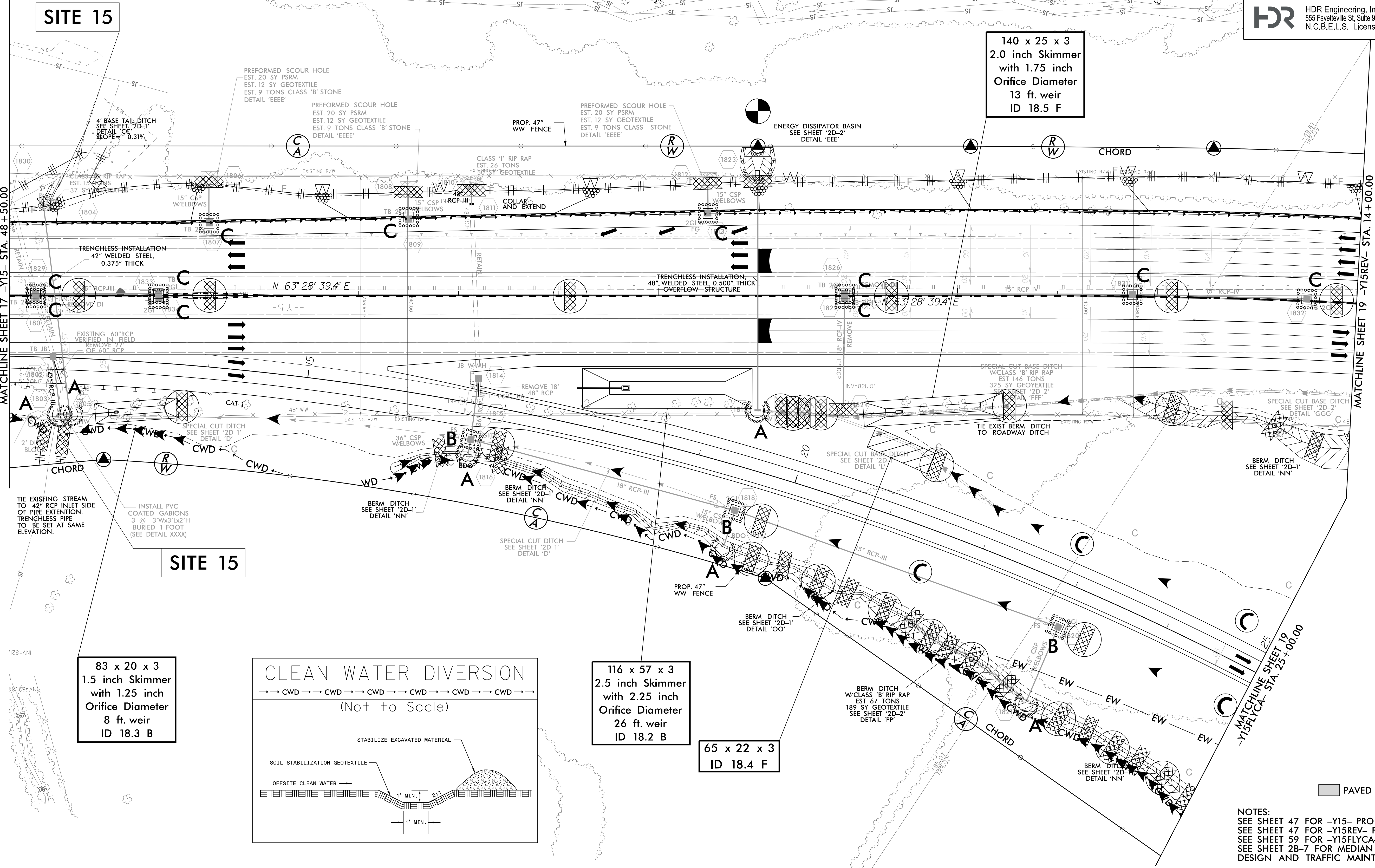
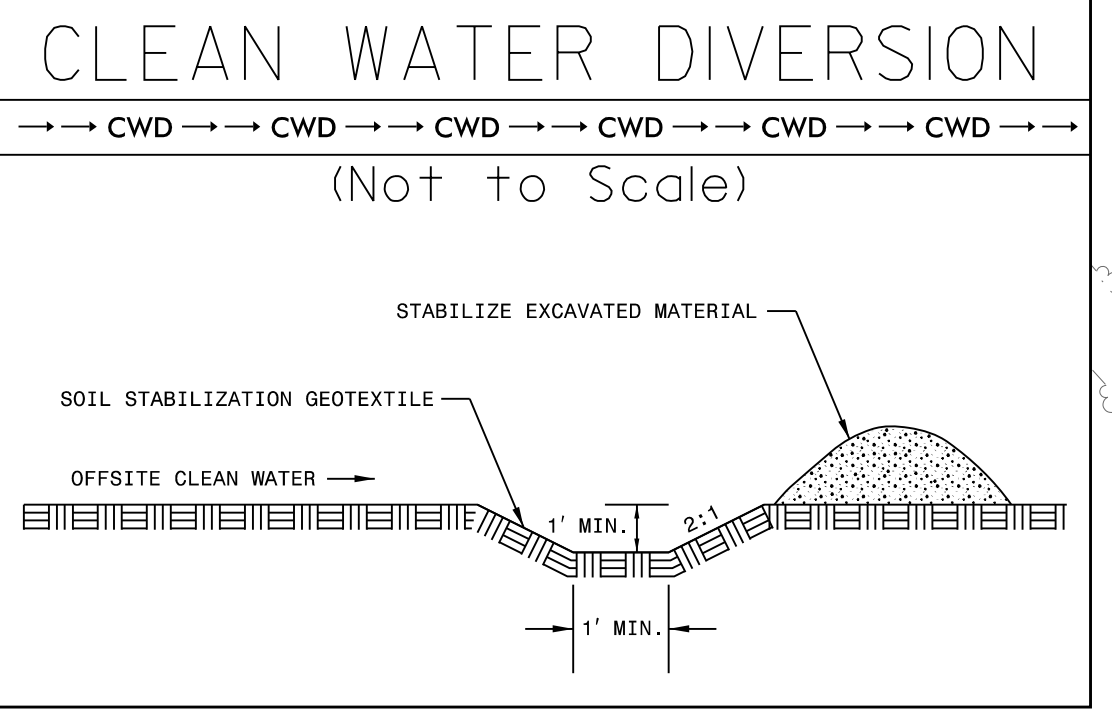
Place Matting for Erosion Control on Slope as Work Allows.
 Sta. 8+00 to Sta. 16+00 -Y15- LT
 Sta. 51+00 to Sta. 56+00 -Y15- LT
 Sta. 15+60 to Sta. 18+57 -Y15FLYCA- RT
 Sta. 18+57 to Sta. 18+93 -Y15FLYCA- RT
 Sta. 18+57 to Sta. 19+06 -Y15FLYCA- LT
 Sta. 19+50 to Sta. 28+50 -Y15FLYCA- RT
 Sta. 20+00 to Sta. 20+50 -Y15FLYCA- LT

140 x 25 x 3
 2.0 inch Skimmer
 with 1.75 inch
 Orifice Diameter
 13 ft. weir
 ID 18.5 F

83 x 20 x 3
 1.5 inch Skimmer
 with 1.25 inch
 Orifice Diameter
 8 ft. weir
 ID 18.3 B

116 x 57 x 3
 2.5 inch Skimmer
 with 2.25 inch
 Orifice Diameter
 26 ft. weir
 ID 18.2 B

65 x 22 x 3
 ID 18.4 F



NOTES:
 SEE SHEET 47 FOR -Y15- PROFILE
 SEE SHEET 47 FOR -Y15REV- PROFILE
 SEE SHEET 59 FOR -Y15FLYCA- PROFILE
 SEE SHEET 2B-7 FOR MEDIAN CROSSOVER DESIGN AND TRAFFIC MAINTAINANCE

REVISIONS
 PLOT DRIVER: NCDOT_color_eng_100.plt
 USER: MDIEHL
 FILE: NCDOT\NCDOT-U2579AB\6.0.CAD.BTM\6.2.Work\In_Progress\U-2579AB\EROSION Contr\U2579ab_EC_PSH.dgn
 PENTABLE: NCDOT_EC_FINAL_BW.tbl
 DATE: 7/16/2021
 TIME: 1:40:23 PM