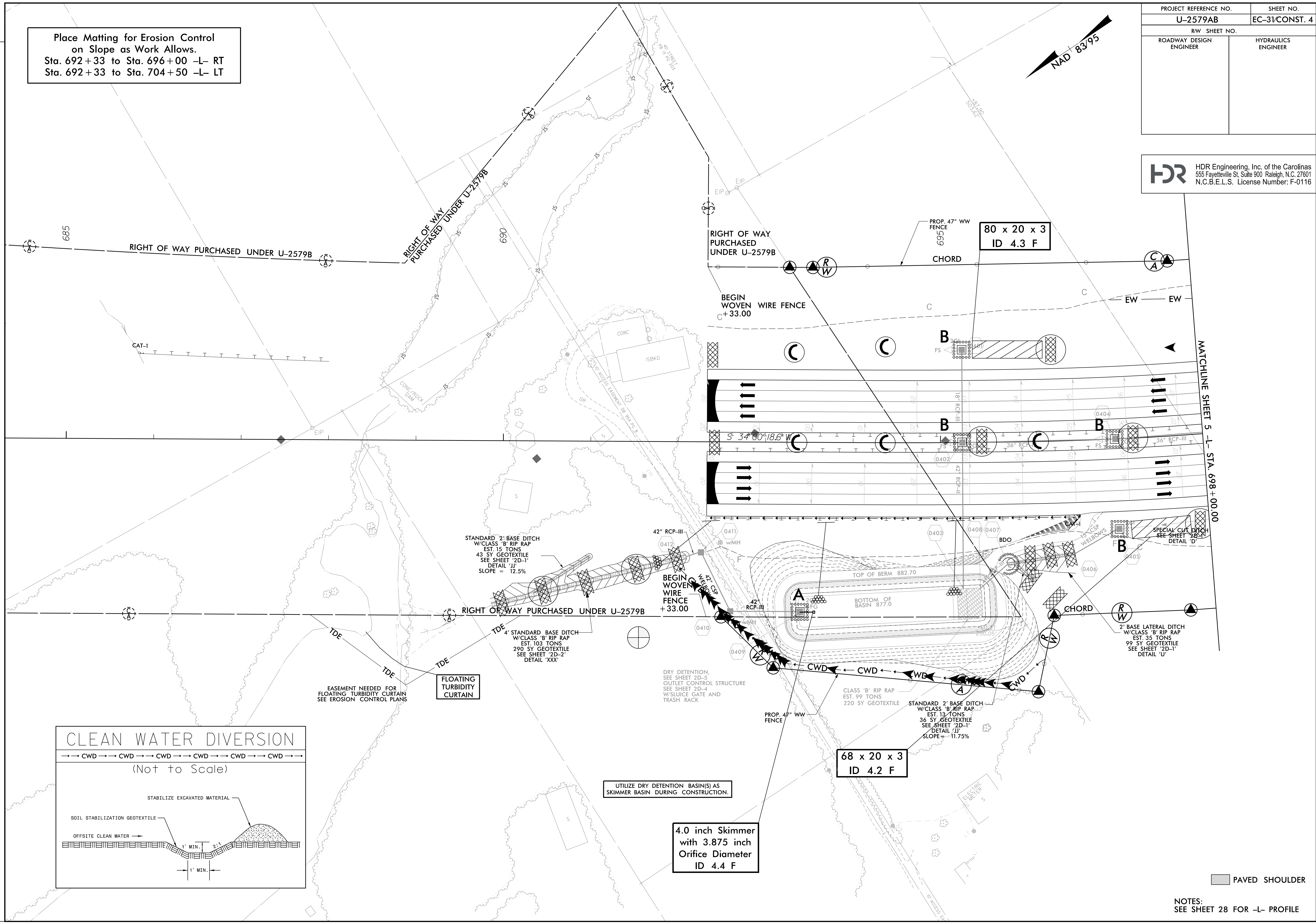
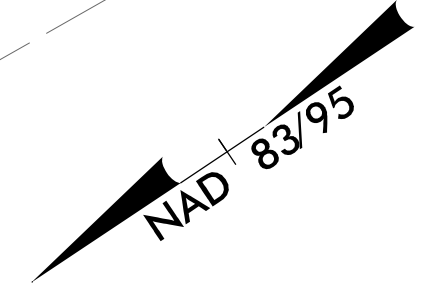


PROJECT REFERENCE NO.	SHEET NO.
U-2579AB	EC-31/CONST. 4
RW SHEET NO.	
ROADWAY DESIGN ENGINEER	HYDRAULICS ENGINEER

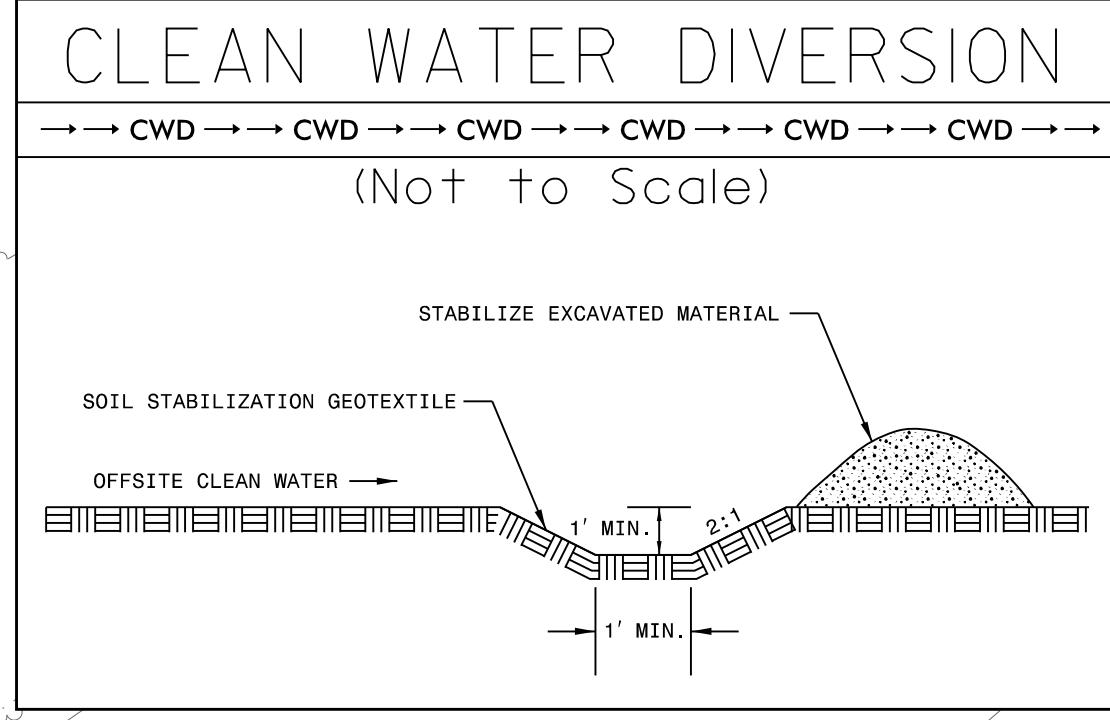
**HDR** HDR Engineering, Inc. of the Carolinas  
 555 Fayetteville St. Suite 900 Raleigh, N.C. 27601  
 N.C.B.E.L.S. License Number: F-0116

Place Matting for Erosion Control  
 on Slope as Work Allows.  
 Sta. 692+33 to Sta. 696+00 -L- RT  
 Sta. 692+33 to Sta. 704+50 -L- LT



REVISIONS

PLOT DRIVER: NCDOT\_pdf\_color\_eng\_100.pht  
 USER: MDIEHL  
 FILE: NCDOT\NCDOT-U2579AB\6.0.CAD.BTM\6.2.Work\In\_Progress\U-2579AB\Erosion\_Control\U2579ab\_EC\_PSH.dgn  
 PENTABLE: NCDOT\_EC\_FINAL\_BW.tbl  
 DATE: 7/16/2021  
 TIME: 1:33:50 PM



STANDARD 2' BASE DITCH  
 W/CLASS 'B' RIP RAP  
 EST. 15 TONS  
 43 SY GEOTEXTILE  
 SEE SHEET '2D-1'  
 DETAIL 'J'  
 SLOPE = 12.5%

4' STANDARD BASE DITCH  
 W/CLASS 'B' RIP RAP  
 EST. 103 TONS  
 290 SY GEOTEXTILE  
 SEE SHEET '2D-2'  
 DETAIL 'XXX'

DRY DETENTION,  
 SEE SHEET 2D-5  
 OUTLET CONTROL STRUCTURE  
 SEE SHEET 2D-4  
 W/SLUICE GATE AND  
 TRASH RACK

UTILIZE DRY DETENTION BASIN(S) AS  
 SKIMMER BASIN DURING CONSTRUCTION.

4.0 inch Skimmer  
 with 3.875 inch  
 Orifice Diameter  
 ID 4.4 F

68 x 20 x 3  
 ID 4.2 F

80 x 20 x 3  
 ID 4.3 F

PAVED SHOULDER

NOTES:  
 SEE SHEET 28 FOR -L- PROFILE