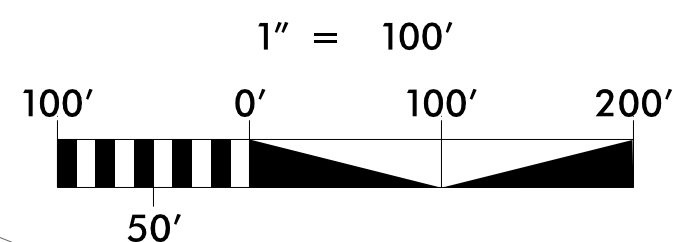


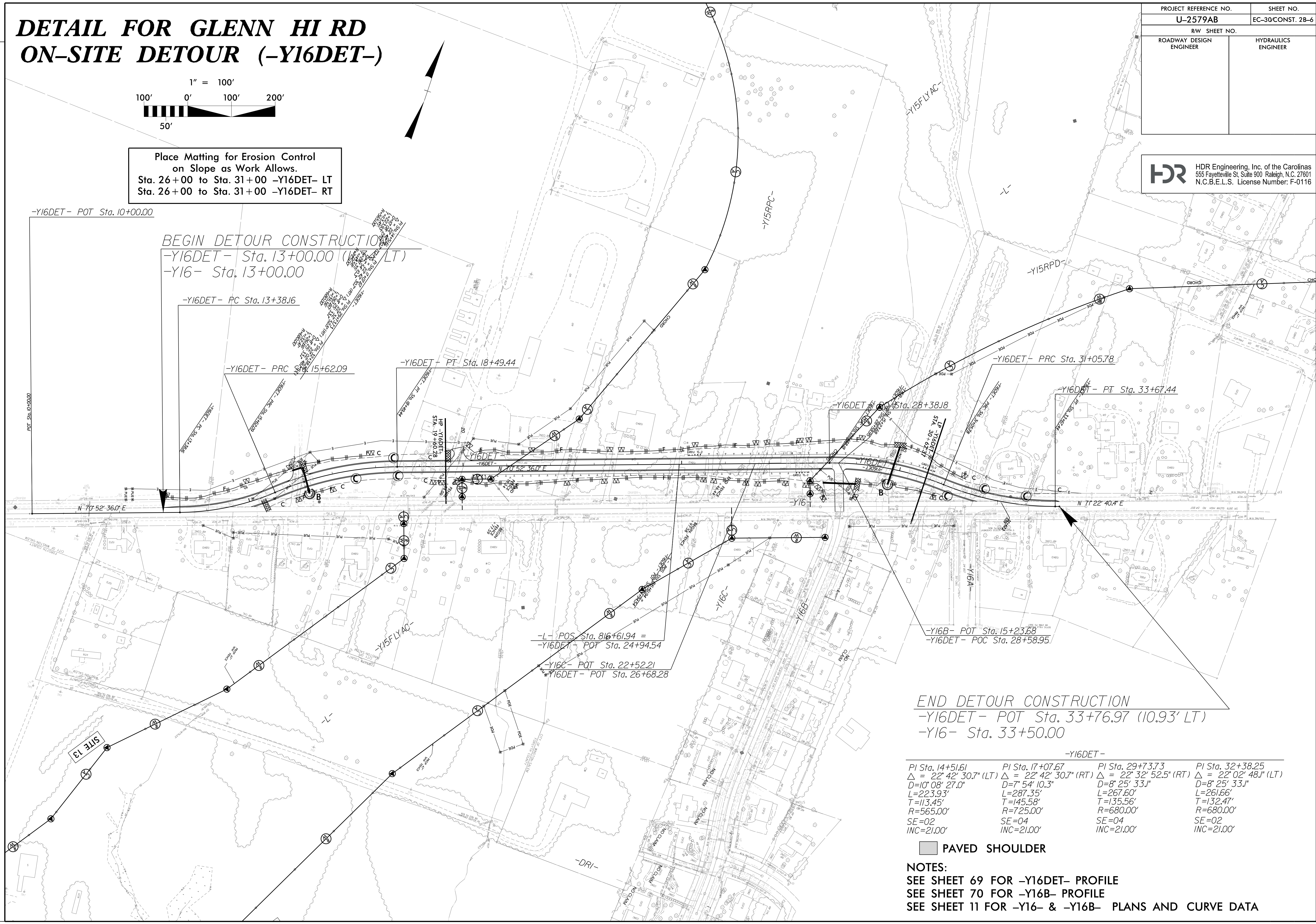
# DETAIL FOR GLENN HI RD ON-SITE DETOUR (-Y16DET-)



Place Matting for Erosion Control  
on Slope as Work Allows.  
Sta. 26+00 to Sta. 31+00 -Y16DET- LT  
Sta. 26+00 to Sta. 31+00 -Y16DET- RT

PROJECT REFERENCE NO.	SHEET NO.
U-2579AB	EC-30CONST. 2B-6
RW SHEET NO.	
ROADWAY DESIGN ENGINEER	HYDRAULICS ENGINEER

**HDR** HDR Engineering, Inc. of the Carolinas  
555 Fayetteville St. Suite 900 Raleigh, N.C. 27601  
N.C.B.E.L.S. License Number: F-0116



-Y16DET- POT Sta. 10+00.00

BEGIN DETOUR CONSTRUCTION  
-Y16DET- Sta. 13+00.00 (10.93' LT)  
-Y16- Sta. 13+00.00

-Y16DET- PC Sta. 13+38.16

-Y16DET- PRC Sta. 15+62.09

-Y16DET- PT Sta. 18+49.44

-Y16DET- POT Sta. 28+38.18

-Y16DET- PRC Sta. 31+05.78

-Y16DET- PT Sta. 33+67.44

N 70° 52' 36.0" E

N 71° 22' 40.4" E

-L- POS Sta. 816+61.94 =  
-Y16DET- POT Sta. 24+94.54

-Y16C- POT Sta. 22+52.21  
-Y16DET- POT Sta. 26+68.28

-Y16B- POT Sta. 15+23.68

-Y16DET- POT Sta. 28+58.95

END DETOUR CONSTRUCTION

-Y16DET- POT Sta. 33+76.97 (10.93' LT)

-Y16- Sta. 33+50.00

-Y16DET-

PI Sta. 14+51.61 Δ = 22° 42' 30.7" (LT) D=10' 08' 27.0" L=223.93' T=113.45' R=565.00' SE=02 INC=21.00'	PI Sta. 17+07.67 Δ = 22° 42' 30.7" (RT) D=7' 54' 10.3" L=287.35' T=145.58' R=725.00' SE=04 INC=21.00'	PI Sta. 29+73.73 Δ = 22° 32' 52.5" (RT) D=8' 25' 33.1" L=267.60' T=135.56' R=680.00' SE=04 INC=21.00'	PI Sta. 32+38.25 Δ = 22° 02' 48.1" (LT) D=8' 25' 33.1" L=261.66' T=132.47' R=680.00' SE=02 INC=21.00'
---	--	--	--

PAVED SHOULDER

NOTES:  
SEE SHEET 69 FOR -Y16DET- PROFILE  
SEE SHEET 70 FOR -Y16B- PROFILE  
SEE SHEET 11 FOR -Y16- & -Y16B- PLANS AND CURVE DATA

PLOT DRIVER: NCDOT\_pdf\_color\_eng\_100.pht  
 USER: MDIEHL  
 FILE: NCDOT\NCDOT-U2579AB\6.0.CAD\BTM\6.2.Work\In\_Progress\U-2579AB\Erosion\_Control\U2579ab\_EC\_PSH.dgn  
 PENTABLE: NCDOT\_EC\_FINAL\_BW.tbl  
 DATE: 7/16/2021  
 TIME: 1:33:26 PM  
 ROW REV. - FEBRUARY 8, 2019 - REVISED TCE ON PARCELS 157 AND 158 TO AVOID SEPTIC TANK. SMP

REVISIONS