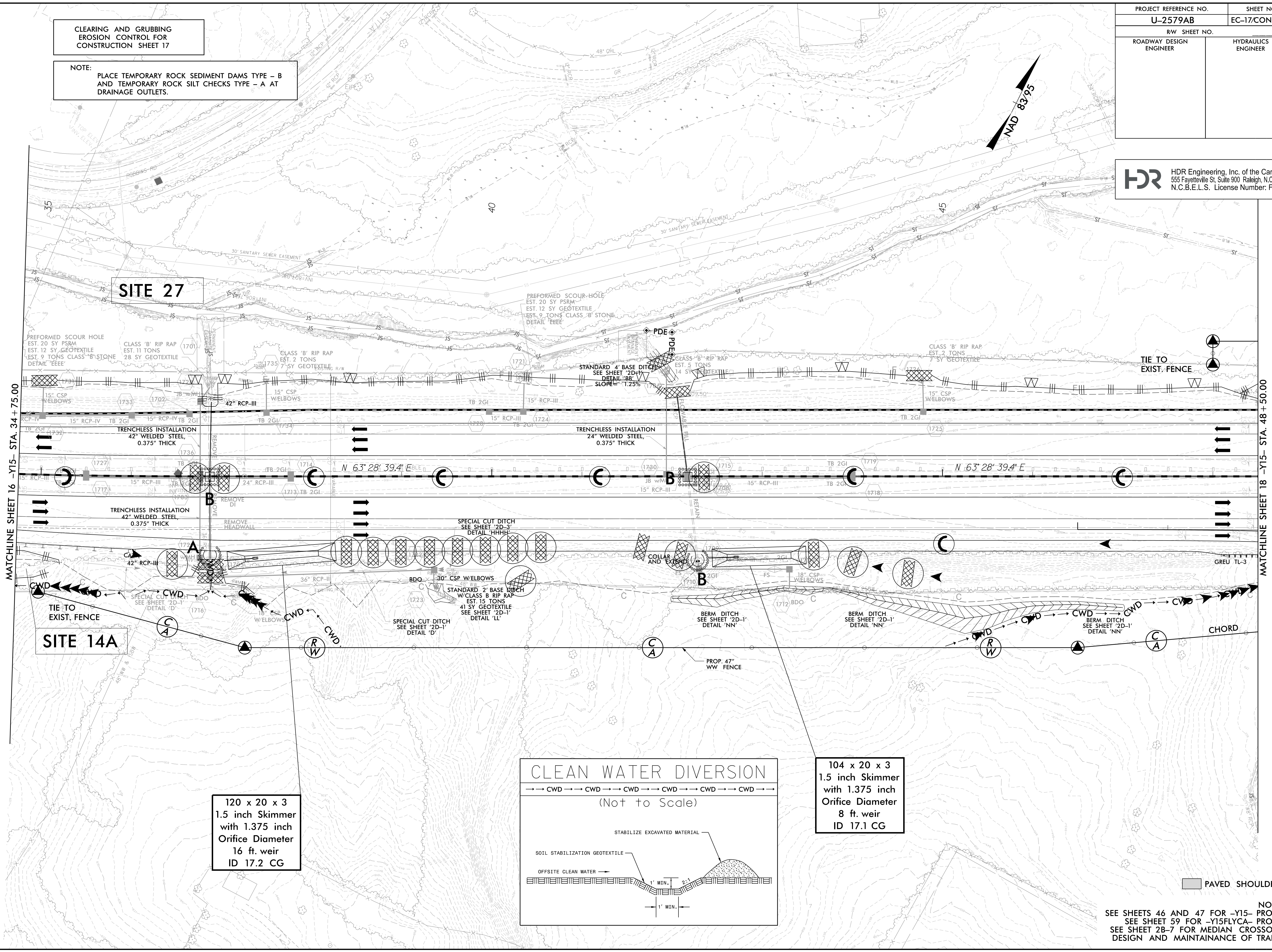
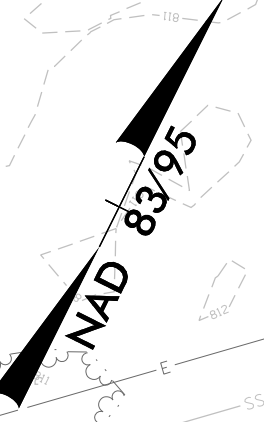


PROJECT REFERENCE NO.	SHEET NO.
U-2579AB	EC-17/CONST. 17
RW SHEET NO.	
ROADWAY DESIGN ENGINEER	HYDRAULICS ENGINEER

HDR HDR Engineering, Inc. of the Carolinas
 555 Fayetteville St. Suite 900 Raleigh, N.C. 27601
 N.C.B.E.L.S. License Number: F-0116

CLEARING AND GRUBBING
 EROSION CONTROL FOR
 CONSTRUCTION SHEET 17

NOTE:
 PLACE TEMPORARY ROCK SEDIMENT DAMS TYPE - B
 AND TEMPORARY ROCK SILT CHECKS TYPE - A AT
 DRAINAGE OUTLETS.



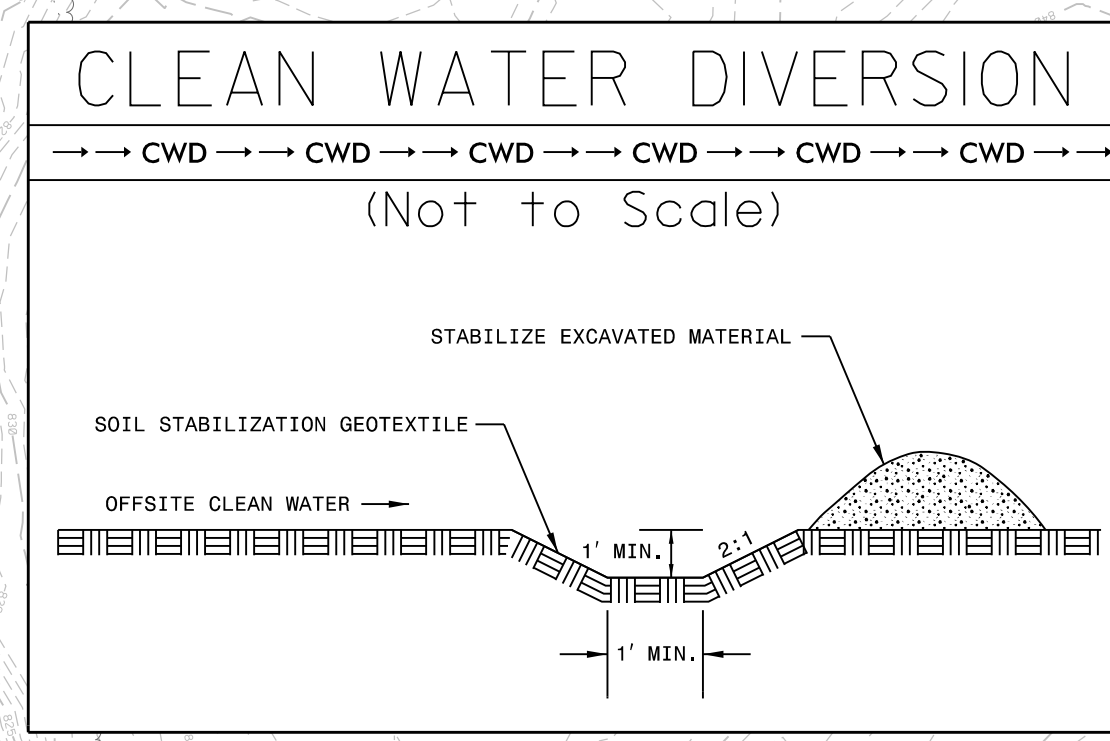
SITE 14A

SITE 27

MATCHLINE SHEET 16 -Y15- STA. 34+75.00

MATCHLINE SHEET 18 -Y15- STA. 48+50.00

120 x 20 x 3
 1.5 inch Skimmer
 with 1.375 inch
 Orifice Diameter
 16 ft. weir
 ID 17.2 CG



104 x 20 x 3
 1.5 inch Skimmer
 with 1.375 inch
 Orifice Diameter
 8 ft. weir
 ID 17.1 CG

PAVED SHOULDER

NOTES:
 SEE SHEETS 46 AND 47 FOR -Y15- PROFILE
 SEE SHEET 59 FOR -Y15FLYCA- PROFILE
 SEE SHEET 2B-7 FOR MEDIAN CROSSOVER
 DESIGN AND MAINTAINANCE OF TRAFFIC

PLOT DRIVER: NCDOT...
 USER: MDIEHL
 DATE: 7/16/2021
 TIME: 11:40:05 PM
 FILE: NCDOT\NCDOT-U2579AB\6.0.CAD.BTM\6.2.Work.In_Progress\U-2579AB\Erosion_Control\U2579ab_EC_PSH.dgn

REVISIONS