

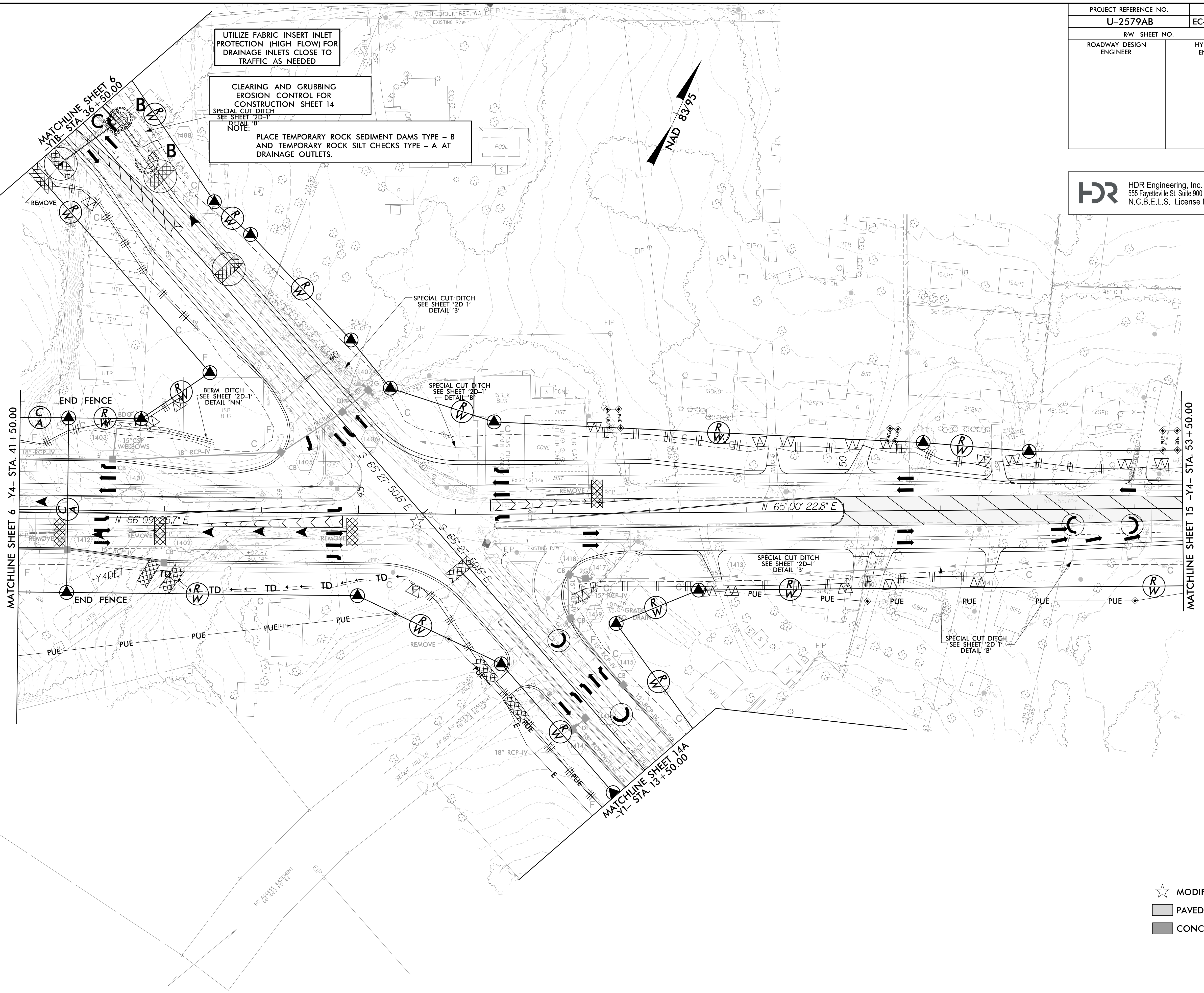
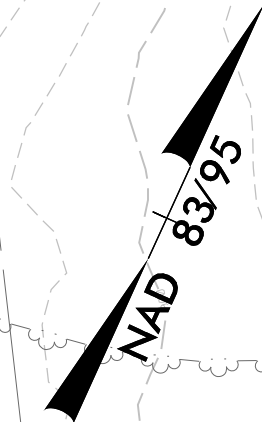
| | |
|-------------------------|---------------------|
| PROJECT REFERENCE NO. | SHEET NO. |
| U-2579AB | EC-14/CONST. 14 |
| RW SHEET NO. | |
| ROADWAY DESIGN ENGINEER | HYDRAULICS ENGINEER |

HDR HDR Engineering, Inc. of the Carolinas
 555 Fayetteville St. Suite 900 Raleigh, N.C. 27601
 N.C.B.E.L.S. License Number: F-0116

UTILIZE FABRIC INSERT INLET PROTECTION (HIGH FLOW) FOR DRAINAGE INLETS CLOSE TO TRAFFIC AS NEEDED

CLEARING AND GRUBBING EROSION CONTROL FOR CONSTRUCTION SHEET 14

NOTE: PLACE TEMPORARY ROCK SEDIMENT DAMS TYPE - B AND TEMPORARY SILT CHECKS TYPE - A AT DRAINAGE OUTLETS.



REVISIONS

PLOT DRIVER: NCDOT_pdf_color_eng_100.plt
 USER: MDIEHL
 FILE: NCDOT\NCDOT-U2579AB\6.0.CAD.BTM\6.2.Work\In_Progress\U-2579AB\Erosion_Control\U2579ab_EC_PSH.dgn

PENTABLE: NCDOT_EC_C&G_BW.tbl
 DATE: 7/16/2021
 TIME: 1:13:22 PM

- ★ MODIFIED SIGNAL
- ▒ PAVED SHOULDER
- CONC. SIDEWALK