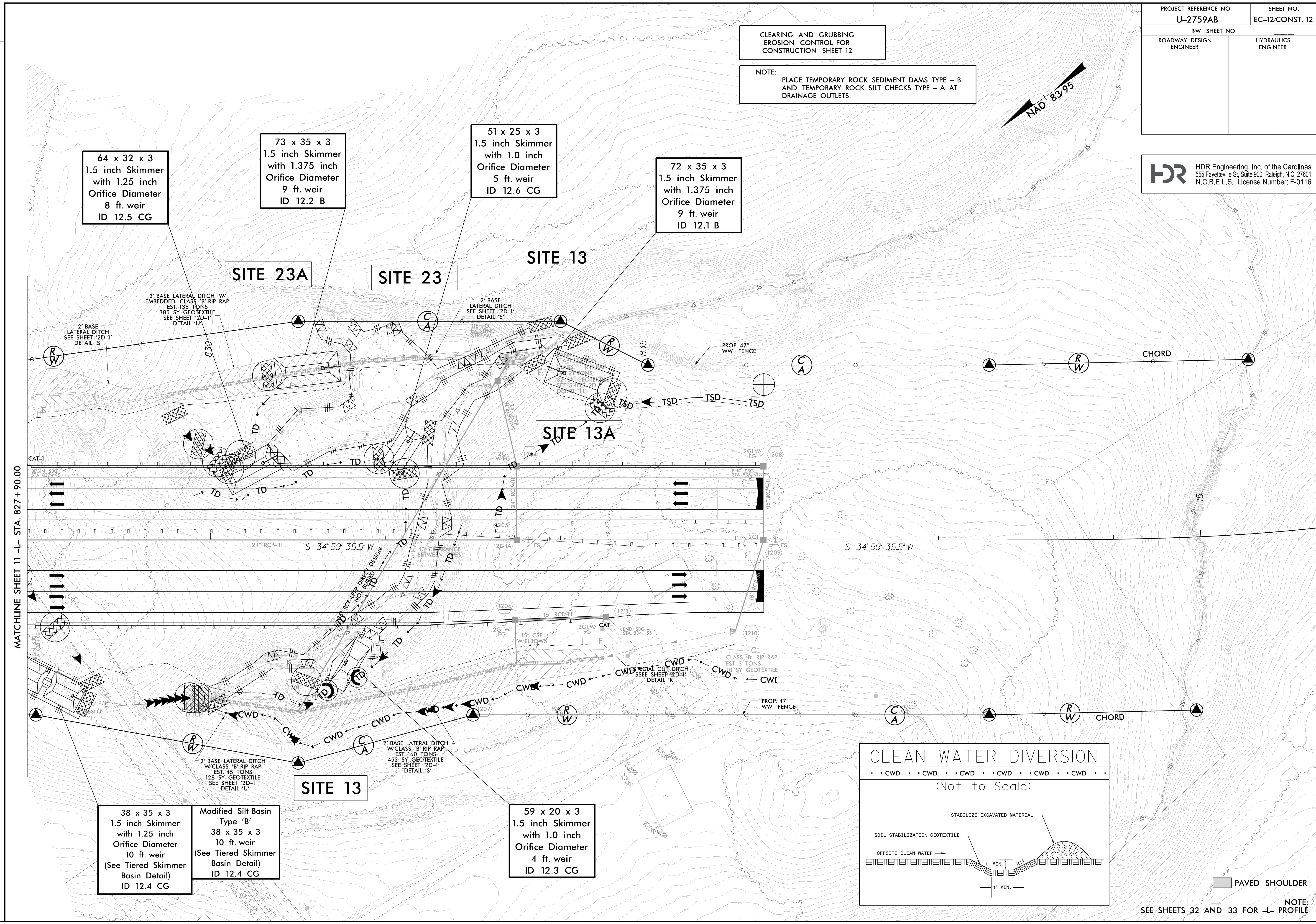
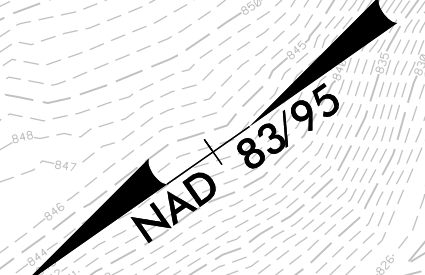


PROJECT REFERENCE NO.	SHEET NO.
U-2759AB	EC-12/CONST. 12
RW SHEET NO.	
ROADWAY DESIGN ENGINEER	HYDRAULICS ENGINEER

**HDR** HDR Engineering, Inc. of the Carolinas  
 555 Fayetteville St. Suite 900 Raleigh, N.C. 27601  
 N.C.B.E.L.S. License Number: F-0116

CLEARING AND GRUBBING  
 EROSION CONTROL FOR  
 CONSTRUCTION SHEET 12

NOTE:  
 PLACE TEMPORARY ROCK SEDIMENT DAMS TYPE - B  
 AND TEMPORARY ROCK SILT CHECKS TYPE - A AT  
 DRAINAGE OUTLETS.



64 x 32 x 3  
 1.5 inch Skimmer  
 with 1.25 inch  
 Orifice Diameter  
 8 ft. weir  
 ID 12.5 CG

73 x 35 x 3  
 1.5 inch Skimmer  
 with 1.375 inch  
 Orifice Diameter  
 9 ft. weir  
 ID 12.2 B

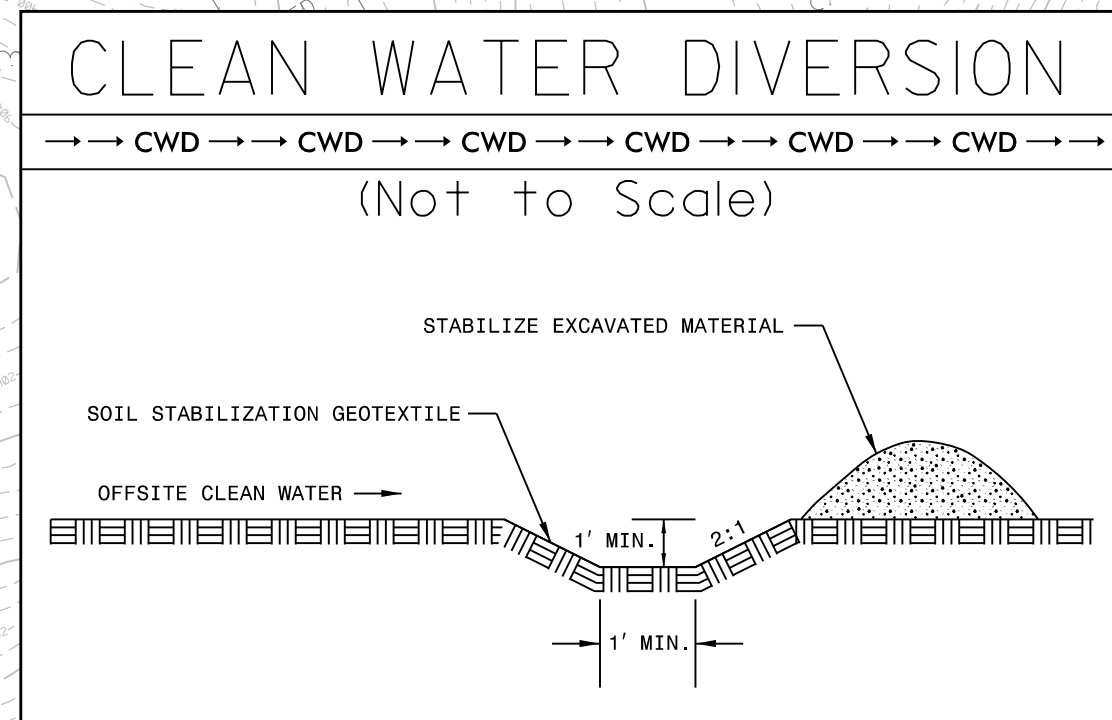
51 x 25 x 3  
 1.5 inch Skimmer  
 with 1.0 inch  
 Orifice Diameter  
 5 ft. weir  
 ID 12.6 CG

72 x 35 x 3  
 1.5 inch Skimmer  
 with 1.375 inch  
 Orifice Diameter  
 9 ft. weir  
 ID 12.1 B

38 x 35 x 3  
 1.5 inch Skimmer  
 with 1.25 inch  
 Orifice Diameter  
 10 ft. weir  
 (See Tiered Skimmer  
 Basin Detail)  
 ID 12.4 CG

Modified Silt Basin  
 Type 'B'  
 38 x 35 x 3  
 10 ft. weir  
 (See Tiered Skimmer  
 Basin Detail)  
 ID 12.4 CG

59 x 20 x 3  
 1.5 inch Skimmer  
 with 1.0 inch  
 Orifice Diameter  
 4 ft. weir  
 ID 12.3 CG



NOTE:  
 SEE SHEETS 32 AND 33 FOR -L- PROFILE

PLOT DRIVER: NCDOT\_pdf\_color\_eng\_100.plt  
 USER: MDIEHL  
 FILE: NCDOT\NCDOT-U2579AB\6.0.CAD.BTM\6.2.Work\In\_Progress\U-2579AB\Erosion\_Control\U2579ab\_EC\_PSH.dgn  
 DATE: 7/16/2021  
 TIME: 11:24:59 PM  
 PENTABLE: NCDOT\_EC\_C&G\_BW.tbl  
 MATCHLINE SHEET 11 -L- STA. 827 + 90.00

REVISIONS