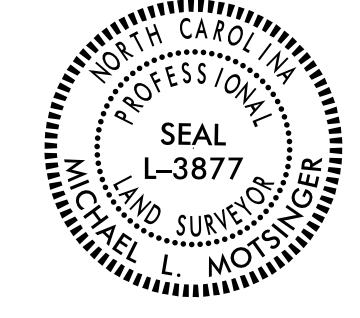


Location and Surveys

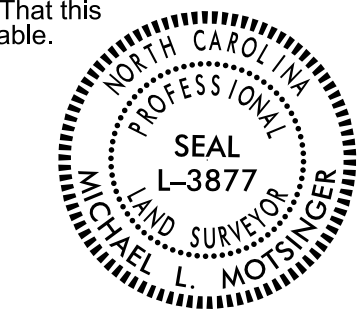
INSERT CONSULTANT'S NAME

PROJECT SURVEYOR



DOCUMENT NOT CONSIDERED FINAL UNLESS ALL SIGNATURES COMPLETED

NCDOT DB 1640 PG 4584



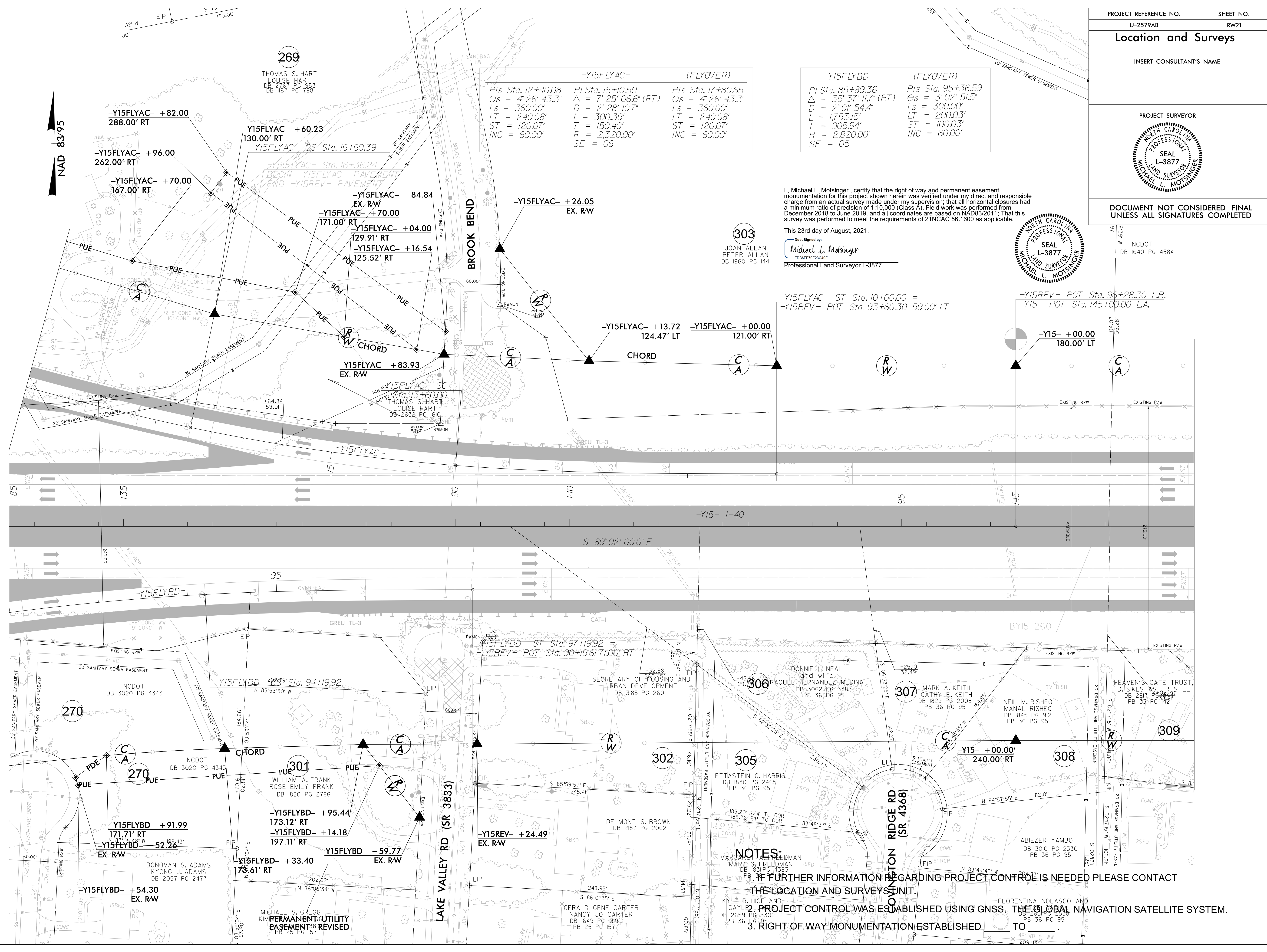
I, Michael L. Molsinger, certify that the right of way and permanent easement monumentation for this project shown herein was verified under my direct and responsible charge from an actual survey made under my supervision; that all horizontal closures had a minimum ratio of precision of 1:10,000 (Class A). Field work was performed from December 2018 to June 2019, and all coordinates are based on NAD83/2011; That this survey was performed to meet the requirements of 21NAC 56.1600 as applicable.

This 23rd day of August, 2021.

Michael L. Molsinger Professional Land Surveyor L-3877

-Y15FLYAC- (FLYOVER)	
Pls Sta. 12+40.08	Pls Sta. 15+10.50
$\Theta s = 4' 26' 43.3''$	$\Delta = 7' 25' 06.6'' (RT)$
$L s = 360.00'$	$D = 2' 28' 10.7''$
$L T = 240.08'$	$L = 300.39'$
$T = 120.07'$	$L T = 240.08'$
$INC = 60.00'$	$ST = 120.07'$
	$INC = 60.00'$
	$SE = 06$

-Y15FLYBD- (FLYOVER)	
Pls Sta. 85+89.36	Pls Sta. 95+36.59
$\Delta = 35' 37' 11.7'' (RT)$	$\Theta s = 3' 02' 51.5''$
$D = 2' 01' 54.4''$	$L s = 300.00'$
$L = 1,753.15'$	$L T = 200.03'$
$T = 905.94'$	$ST = 100.03'$
$R = 2,820.00'$	$INC = 60.00'$
$SE = 05$	



- NOTES:**
- IF FURTHER INFORMATION REGARDING PROJECT CONTROL IS NEEDED PLEASE CONTACT THE LOCATION AND SURVEYS UNIT.
 - PROJECT CONTROL WAS ESTABLISHED USING GNSS, THE GLOBAL NAVIGATION SATELLITE SYSTEM.
 - RIGHT OF WAY MONUMENTATION ESTABLISHED TO

REVISIONS

3:14:10 2021 14:42 3:14:10 2021 U:\2579AB\U2579AB.Ls.rw21.dgn mmolsinger