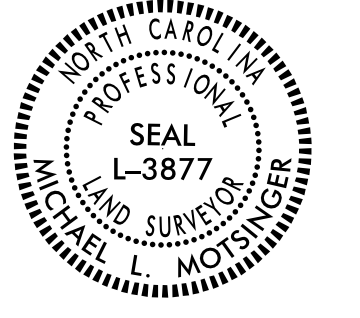


**Location and Surveys**

INSERT CONSULTANT'S NAME

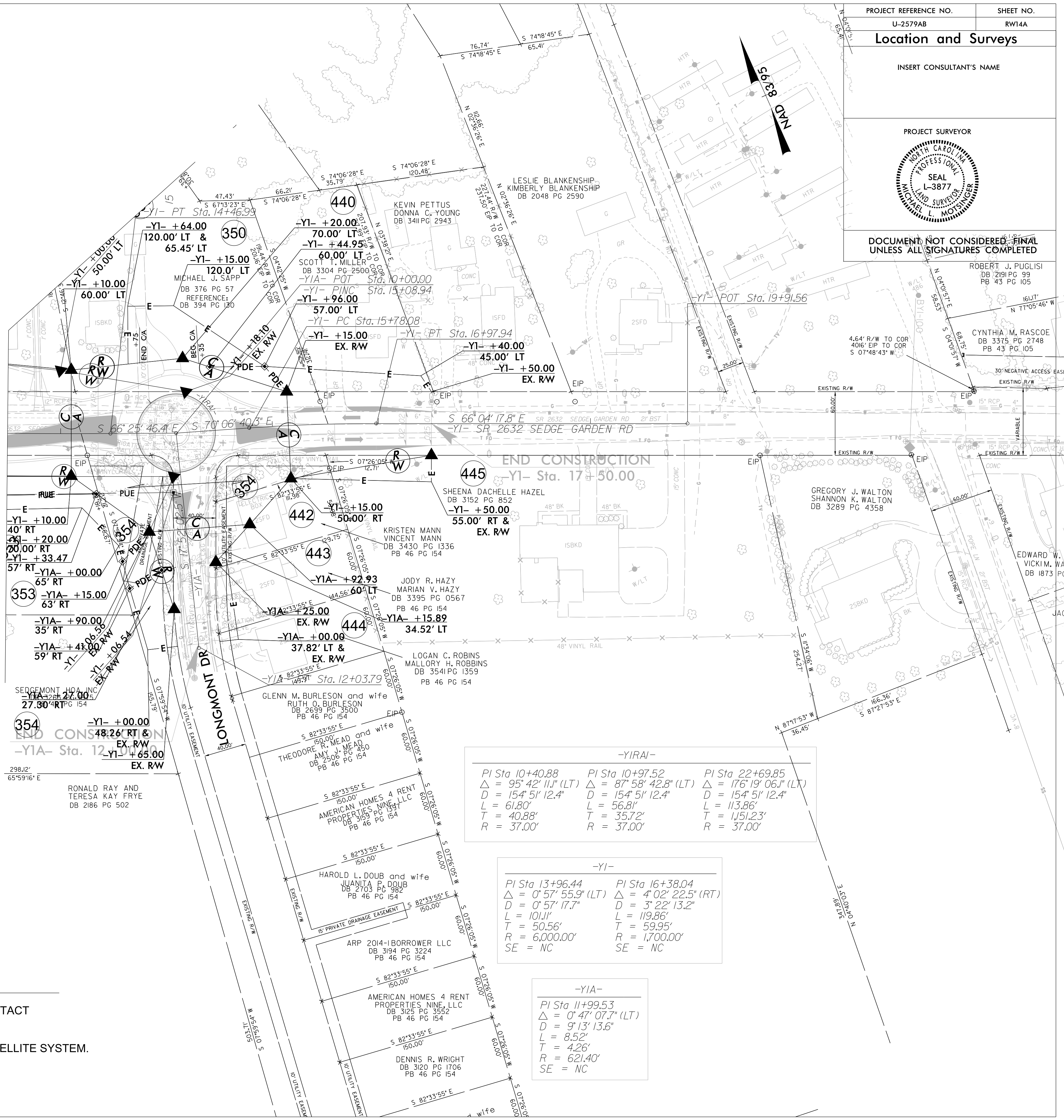
PROJECT SURVEYOR



DOCUMENT NOT CONSIDERED FINAL UNLESS ALL SIGNATURES COMPLETED

ROBERT J. PUGLISI  
DB 2191 PG 99  
PB 43 PG 105

CYNTHIA M. RASCOE  
DB 3375 PG 2748  
PB 43 PG 105



-YIRAI-

PI Sta 10+40.88 Δ = 95° 42' 11.1" (LT) D = 154' 51' 12.4" L = 61.80' T = 40.88' R = 37.00'	PI Sta 10+97.52 Δ = 87° 58' 42.8" (LT) D = 154' 51' 12.4" L = 56.81' T = 35.72' R = 37.00'	PI Sta 22+69.85 Δ = 176° 19' 06.1" (LT) D = 154' 51' 12.4" L = 113.86' T = 151.23' R = 37.00'
-----------------------------------------------------------------------------------------------------------	-----------------------------------------------------------------------------------------------------------	--------------------------------------------------------------------------------------------------------------

-YI-

PI Sta 13+96.44 Δ = 0° 57' 55.9" (LT) D = 0° 57' 17.7" L = 1011' T = 50.56' R = 6,000.00' SE = NC	PI Sta 16+38.04 Δ = 4° 02' 22.5" (RT) D = 3° 22' 13.2" L = 119.86' T = 59.95' R = 1,700.00' SE = NC
---------------------------------------------------------------------------------------------------------------------	-----------------------------------------------------------------------------------------------------------------------

-YIA-

PI Sta 11+99.53 Δ = 0° 47' 07.7" (LT) D = 9° 13' 13.6" L = 8.52' T = 4.26' R = 621.40' SE = NC
------------------------------------------------------------------------------------------------------------------

REVISIONS

I, Michael L. Motsinger, certify that the right of way and permanent easement monumentation for this project shown herein was verified under my direct and responsible charge from an actual survey made under my supervision; that all horizontal closures had a minimum ratio of precision of 1:10,000 (Class A). Field work was performed from December 2018 to June 2019, and all coordinates are based on NAD83/2011; That this survey was performed to meet the requirements of 21NCAC 56.1600 as applicable.

This 23rd day of August, 2021.  
DocuSigned by:  
**Michael L. Motsinger**  
F098F7E123C4DE  
Professional Land Surveyor L-3877



**NOTES:**

1. IF FURTHER INFORMATION REGARDING PROJECT CONTROL IS NEEDED PLEASE CONTACT THE LOCATION AND SURVEYS UNIT.
2. PROJECT CONTROL WAS ESTABLISHED USING GNSS, THE GLOBAL NAVIGATION SATELLITE SYSTEM.
3. RIGHT OF WAY MONUMENTATION ESTABLISHED \_\_\_\_\_ TO \_\_\_\_\_.