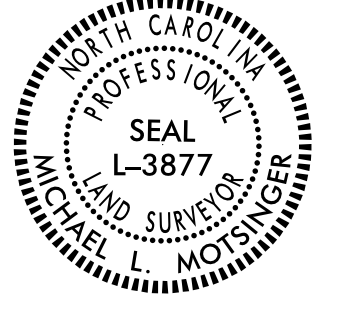


Location and Surveys

INSERT CONSULTANT'S NAME

PROJECT SURVEYOR



DOCUMENT NOT CONSIDERED FINAL UNLESS ALL SIGNATURES COMPLETED

ELIZABETH P. JOYNER  
DENNIS MICHAEL JOYNER  
DB 1963 PG 3204  
PB 9 PG 98  
S 67°11'42" W  
S 67°11'42" W

CURTIS LEE HUNDLEY  
LISA LEONTINE HUNDLEY  
DB 2079 PG 2249  
PB 9 PG 98  
N 69°39'20" E  
146.88'

JOSHUA SCOTT KUEIDER  
DB 3138 PG 1740  
PB 9 PG 98

DONALD W. MANUEL  
JEFFREY L. MANUEL  
DB 2316 PG 1065  
PB 9 PG 98

MICHAEL J. SAPP  
DB 376 PG 57  
REFERENCE:  
DB 394 PG 130

RICKY L. OAKLEY  
DB 2934 PG 3500

DELORES S. CLARKE  
CARL L. CLARKE  
DB 675 PG 118  
PB 9 PG 98  
REFERENCE:  
DB 305 PG 88 EIP

DEPARTMENT OF TRANSPORTATION  
DB 3458 PG 3034

C.D. WALKER PROPERTIES, LLC  
DB 3520 PG 4320

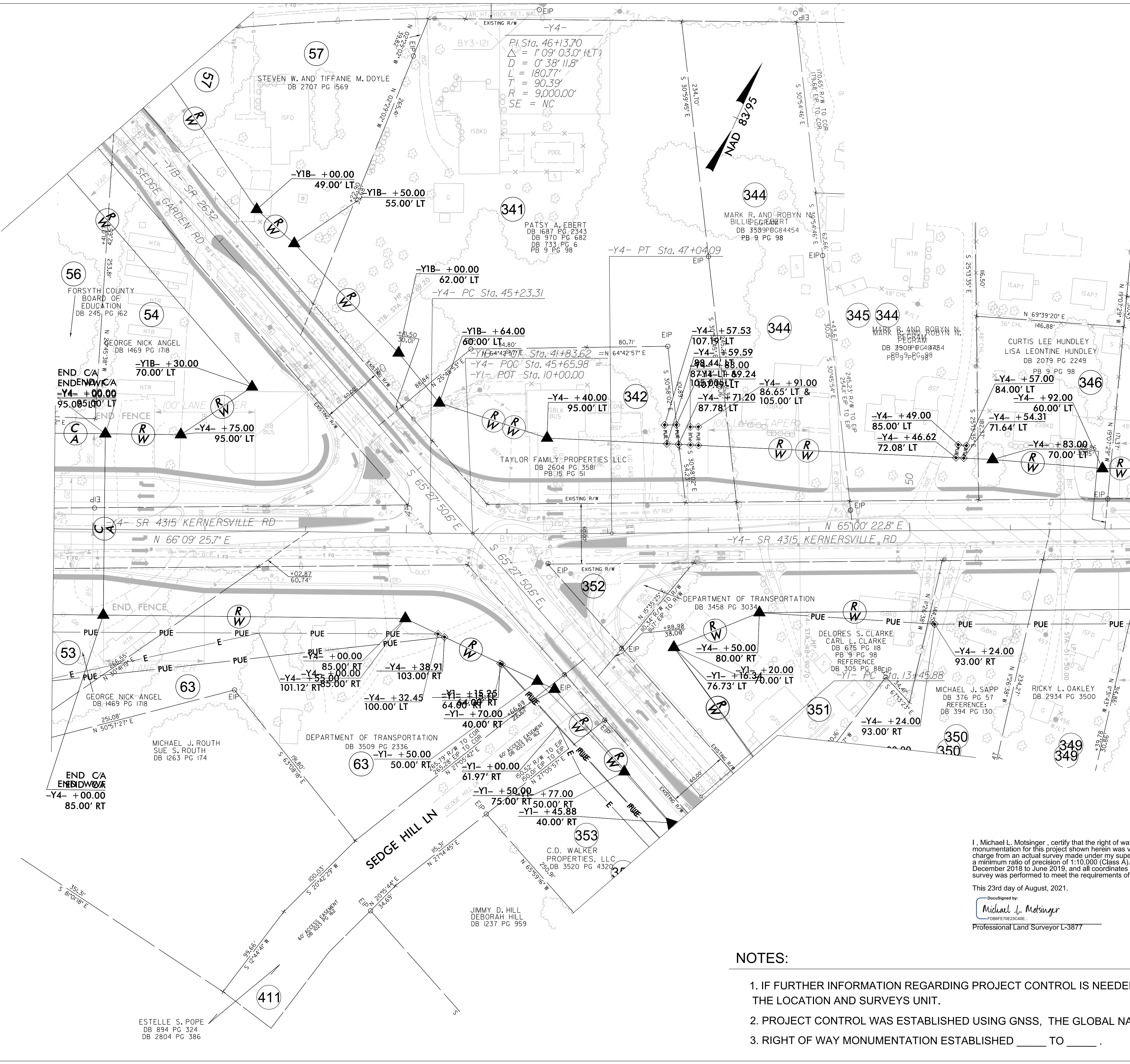
JIMMY D. HILL  
DEBORAH HILL  
DB 1237 PG 959

ESTELLE S. POPE  
DB 894 PG 324  
DB 2804 PG 386

GEORGE NICK ANGEL  
DB 1469 PG 1718

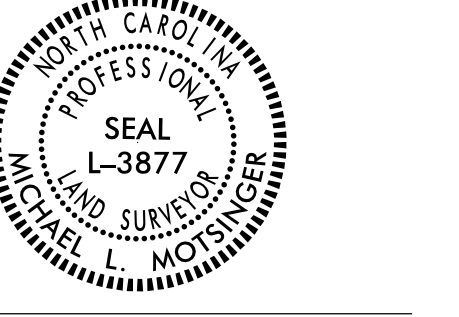
GEORGE NICK ANGEL  
DB 1469 PG 1718

GEORGE NICK ANGEL  
DB 1469 PG 1718



I, Michael L. Molsinger, certify that the right of way and permanent easement monumentation for this project shown herein was verified under my direct and responsible charge from an actual survey made under my supervision; that all horizontal closures had a minimum ratio of precision of 1:10,000 (Class A). Field work was performed from December 2018 to June 2019, and all coordinates are based on NAD83/2011; That this survey was performed to meet the requirements of 21NCA 56.1600 as applicable.

This 23rd day of August, 2021.  
Signed by:  
Michael L. Molsinger  
Professional Land Surveyor L-3877



NOTES:

1. IF FURTHER INFORMATION REGARDING PROJECT CONTROL IS NEEDED PLEASE CONTACT THE LOCATION AND SURVEYS UNIT.
2. PROJECT CONTROL WAS ESTABLISHED USING GNSS, THE GLOBAL NAVIGATION SATELLITE SYSTEM.
3. RIGHT OF WAY MONUMENTATION ESTABLISHED \_\_\_\_\_ TO \_\_\_\_\_.

REVISIONS

6/2/19

21 AUG 2021 13:38 U:\2579AB\U2579AB.Ls\_r\14A.dgn  
mmolsinger