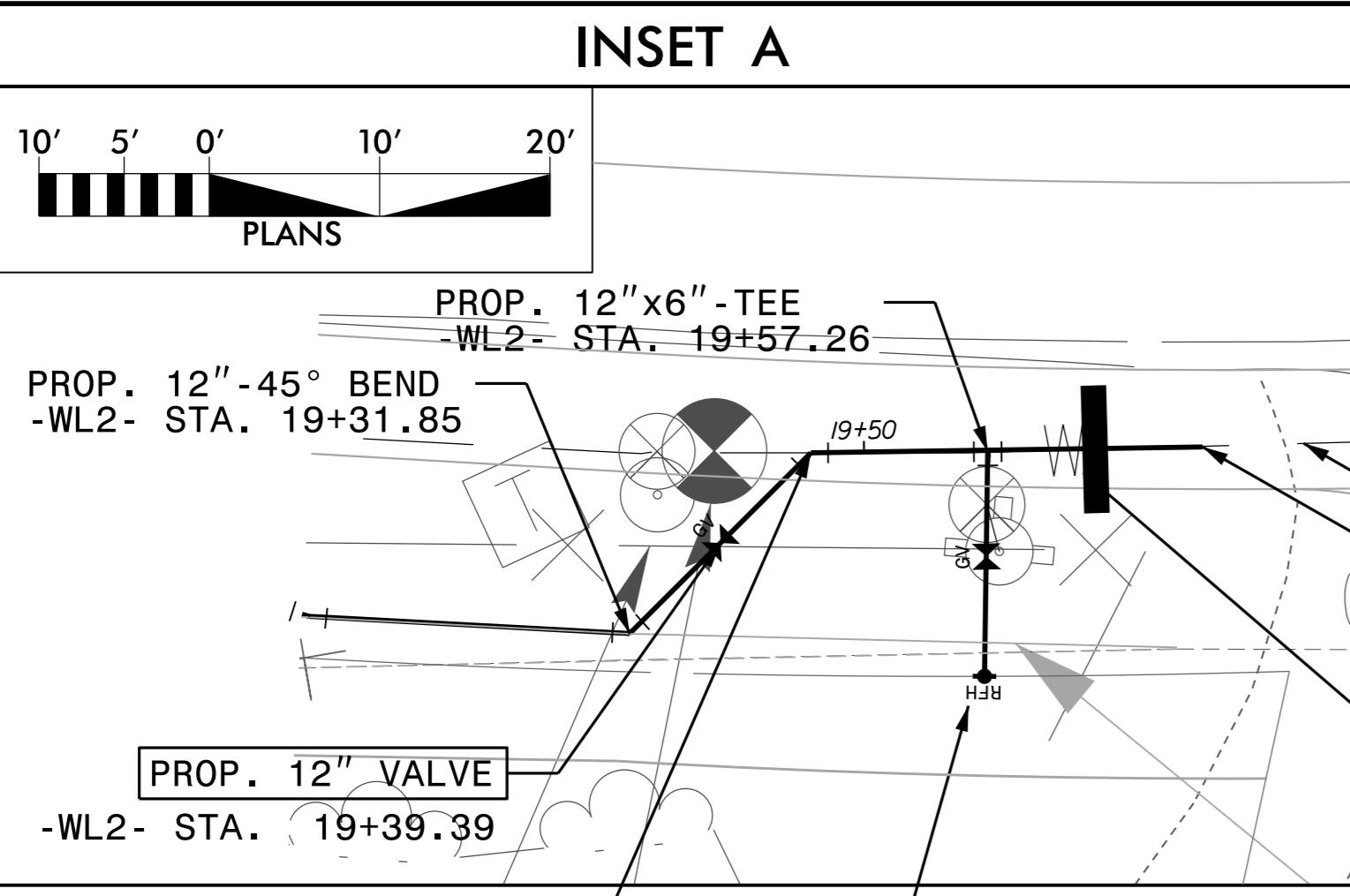


UTILITY CONSTRUCTION

**DOCUMENT NOT CONSIDERED FINAL
UNLESS ALL SIGNATURES COMPLETED**

THIS SHEET CORRESPONDS TO RDY-9



INSET A

10' 5' 0' 10' 20'
PLANS

NAD 83/NA 2011

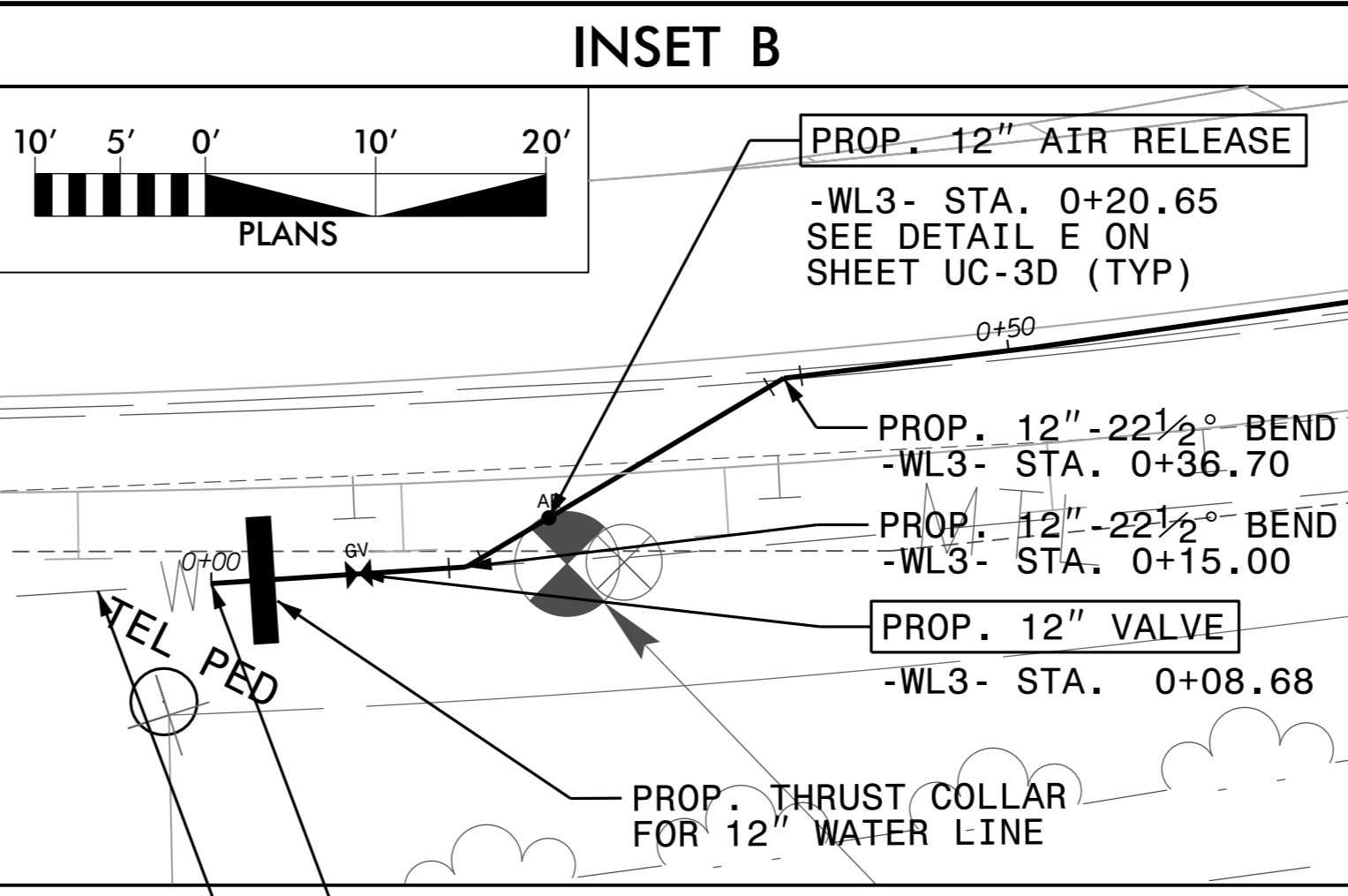
EXIST. 12" WATER LINE

CONNECT TO EXIST. 12" WATER LINE WITH A 12" MJ SLEEVE
-WL2- STA. 19+69.87
-L- STA. 80+51.40, 15.51' RT

PROP. 12" VALVE
-WL2- STA. 19+39.39

PROP. 12"-45° BEND
-WL2- STA. 19+46.87

PROP. THRUST COLLAR FOR 12" WATER LINE
SEE DETAIL A ON SHEET UC-3E (TYP)



INSET B

10' 5' 0' 10' 20'
PLANS

NAD 83/NA 2011

PROP. 12" AIR RELEASE
-WL3- STA. 0+20.65
SEE DETAIL E ON SHEET UC-3D (TYP)

PROP. 12"-22 1/2° BEND
-WL3- STA. 0+36.70

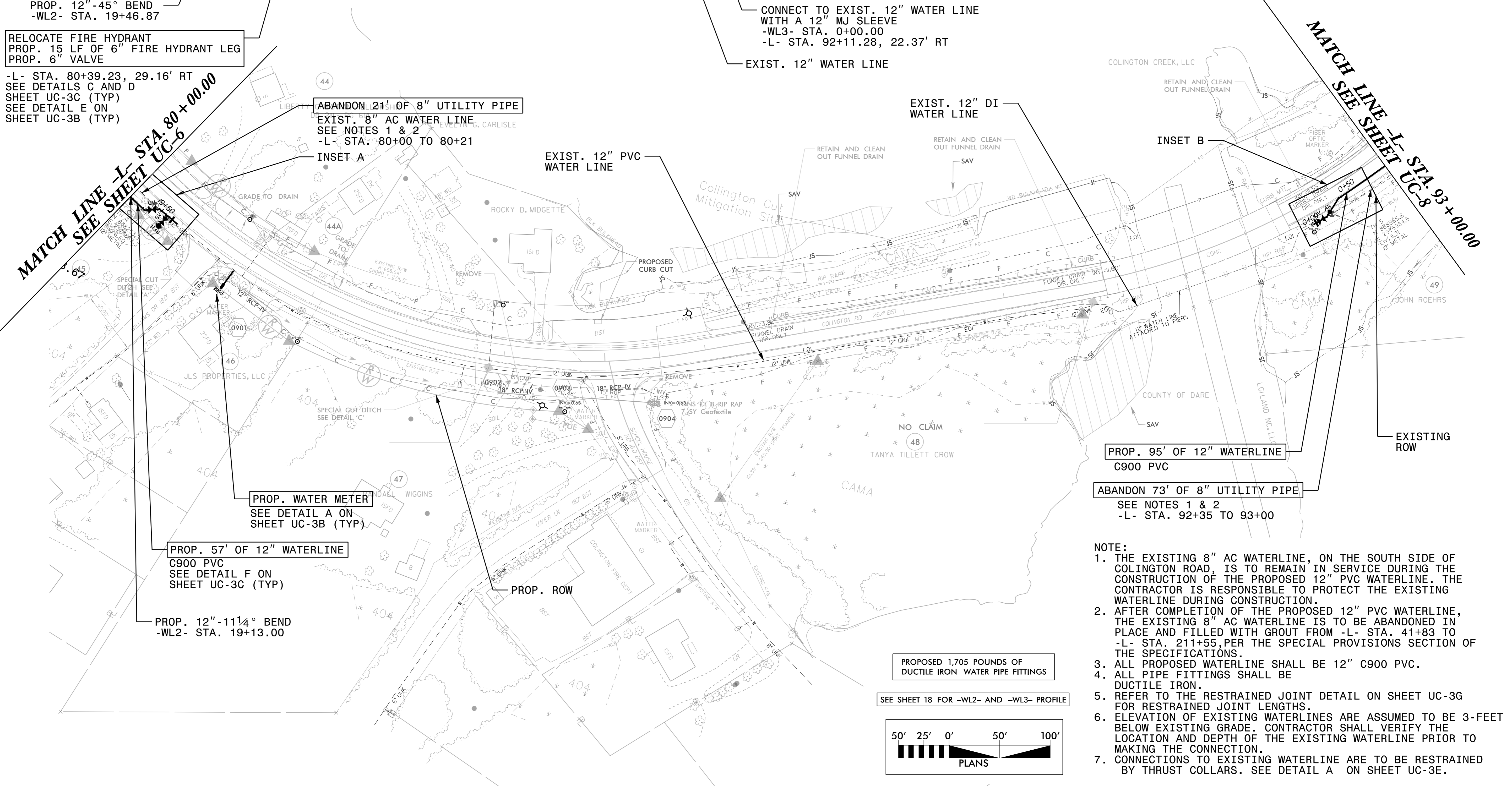
PROP. 12"-22 1/2° BEND
-WL3- STA. 0+15.00

PROP. 12" VALVE
-WL3- STA. 0+08.68

PROP. THRUST COLLAR FOR 12" WATER LINE

CONNECT TO EXIST. 12" WATER LINE WITH A 12" MJ SLEEVE
-WL3- STA. 0+00.00
-L- STA. 92+11.28, 22.37' RT

EXIST. 12" WATER LINE



RELOCATE FIRE HYDRANT
PROP. 15 LF OF 6" FIRE HYDRANT LEG
PROP. 6" VALVE

-L- STA. 80+39.23, 29.16' RT
SEE DETAILS C AND D
SHEET UC-3C (TYP)
SEE DETAIL E ON
SHEET UC-3B (TYP)

ABANDON 21' OF 8" UTILITY PIPE
EXIST. 8" AC WATER LINE
SEE NOTES 1 & 2
-L- STA. 80+00 TO 80+21

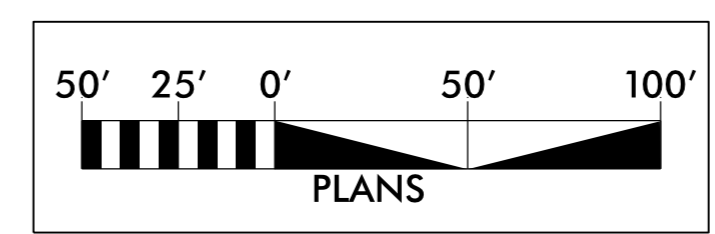
PROP. 95' OF 12" WATERLINE
C900 PVC

ABANDON 73' OF 8" UTILITY PIPE
SEE NOTES 1 & 2
-L- STA. 92+35 TO 93+00

- NOTE:
1. THE EXISTING 8" AC WATERLINE, ON THE SOUTH SIDE OF COLINGTON ROAD, IS TO REMAIN IN SERVICE DURING THE CONSTRUCTION OF THE PROPOSED 12" PVC WATERLINE. THE CONTRACTOR IS RESPONSIBLE TO PROTECT THE EXISTING WATERLINE DURING CONSTRUCTION.
 2. AFTER COMPLETION OF THE PROPOSED 12" PVC WATERLINE, THE EXISTING 8" AC WATERLINE IS TO BE ABANDONED IN PLACE AND FILLED WITH GROUT FROM -L- STA. 41+83 TO -L- STA. 211+55, PER THE SPECIAL PROVISIONS SECTION OF THE SPECIFICATIONS.
 3. ALL PROPOSED WATERLINE SHALL BE 12" C900 PVC.
 4. ALL PIPE FITTINGS SHALL BE DUCTILE IRON.
 5. REFER TO THE RESTRAINED JOINT DETAIL ON SHEET UC-3G FOR RESTRAINED JOINT LENGTHS.
 6. ELEVATION OF EXISTING WATERLINES ARE ASSUMED TO BE 3-FEET BELOW EXISTING GRADE. CONTRACTOR SHALL VERIFY THE LOCATION AND DEPTH OF THE EXISTING WATERLINE PRIOR TO MAKING THE CONNECTION.
 7. CONNECTIONS TO EXISTING WATERLINE ARE TO BE RESTRAINED BY THRUST COLLARS. SEE DETAIL A ON SHEET UC-3E.

PROPOSED 1,705 POUNDS OF
DUCTILE IRON WATER PIPE FITTINGS

SEE SHEET 18 FOR -WL2- AND -WL3- PROFILE



REVISIONS

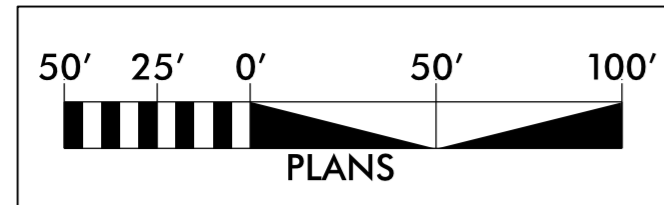
8/17/99
SYSTEMTIME
UC:\Projects\5014_UL_UC7_psh.dgn
USER: GYANTMN

PROJECT REFERENCE NO.	SHEET NO.
R-5014	UC-8
DESIGNED BY: DMD	
DRAWN BY: DMD/MNG	
CHECKED BY: JDB	
APPROVED BY: CMT	
REVISED:	UTILITY CONSTRUCTION PLANS ONLY
NORTH CAROLINA DEPARTMENT OF TRANSPORTATION	
UTILITIES ENGINEERING SEC. PHONE: (919) 707-6690 FAX: (919) 250-4151	

UTILITY CONSTRUCTION

DOCUMENT NOT CONSIDERED FINAL UNLESS ALL SIGNATURES COMPLETED

THIS SHEET CORRESPONDS TO RDY-10



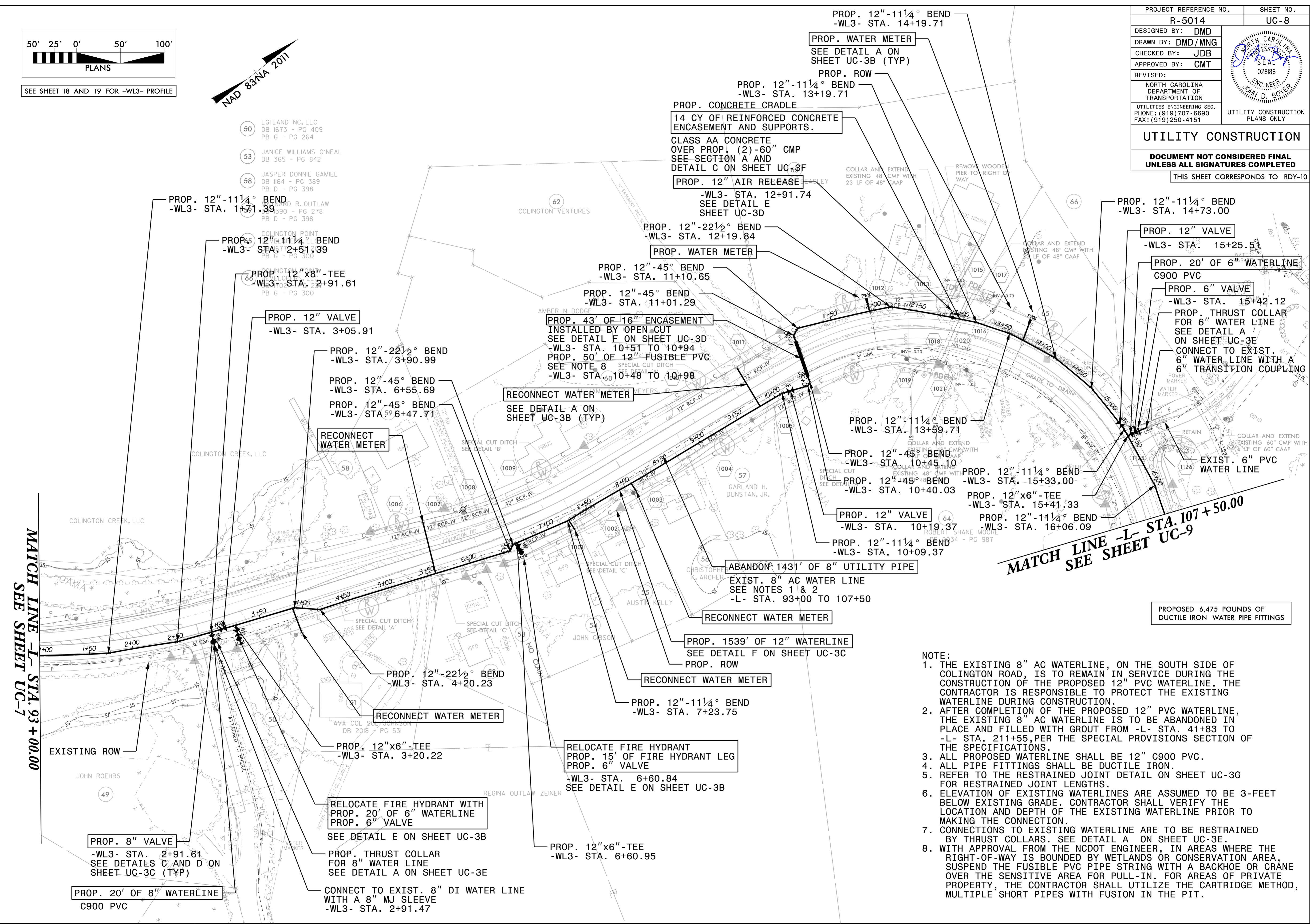
SEE SHEET 18 AND 19 FOR -WL3- PROFILE



- 50 LGILAND NC, LLC
DB 1673 - PG 409
PB G - PG 264
- 53 JANICE WILLIAMS O'NEAL
DB 365 - PG 842
- 58 JASPER DONNIE GAMEL
DB 1164 - PG 389
PB D - PG 398
- WARD R. OUTLAW
DB 1690 - PG 278
PB D - PG 398

MATCH LINE -L- STA. 93+00.00
SEE SHEET UC-7

MATCH LINE -L- STA. 107+50.00
SEE SHEET UC-9



PROPOSED 6,475 POUNDS OF DUCTILE IRON WATER PIPE FITTINGS

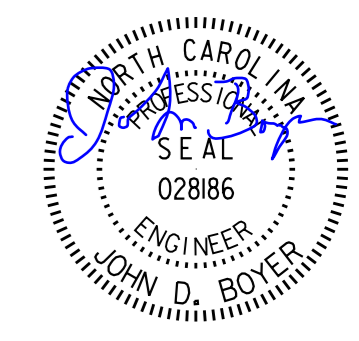
- NOTE:**
1. THE EXISTING 8" AC WATERLINE, ON THE SOUTH SIDE OF COLINGTON ROAD, IS TO REMAIN IN SERVICE DURING THE CONSTRUCTION OF THE PROPOSED 12" PVC WATERLINE. THE CONTRACTOR IS RESPONSIBLE TO PROTECT THE EXISTING WATERLINE DURING CONSTRUCTION.
 2. AFTER COMPLETION OF THE PROPOSED 12" PVC WATERLINE, THE EXISTING 8" AC WATERLINE IS TO BE ABANDONED IN PLACE AND FILLED WITH GROUT FROM -L- STA. 41+83 TO -L- STA. 211+55, PER THE SPECIAL PROVISIONS SECTION OF THE SPECIFICATIONS.
 3. ALL PROPOSED WATERLINE SHALL BE 12" C900 PVC.
 4. ALL PIPE FITTINGS SHALL BE DUCTILE IRON.
 5. REFER TO THE RESTRAINED JOINT DETAIL ON SHEET UC-3G FOR RESTRAINED JOINT LENGTHS.
 6. ELEVATION OF EXISTING WATERLINES ARE ASSUMED TO BE 3- FEET BELOW EXISTING GRADE. CONTRACTOR SHALL VERIFY THE LOCATION AND DEPTH OF THE EXISTING WATERLINE PRIOR TO MAKING THE CONNECTION.
 7. CONNECTIONS TO EXISTING WATERLINE ARE TO BE RESTRAINED BY THRUST COLLARS. SEE DETAIL A ON SHEET UC-3E.
 8. WITH APPROVAL FROM THE NCDOT ENGINEER, IN AREAS WHERE THE RIGHT-OF-WAY IS BOUNDED BY WETLANDS OR CONSERVATION AREA, SUSPEND THE FUSIBLE PVC PIPE STRING WITH A BACKHOE OR CRANE OVER THE SENSITIVE AREA FOR PULL-IN. FOR AREAS OF PRIVATE PROPERTY, THE CONTRACTOR SHALL UTILIZE THE CARTRIDGE METHOD, MULTIPLE SHORT PIPES WITH FUSION IN THE PIT.

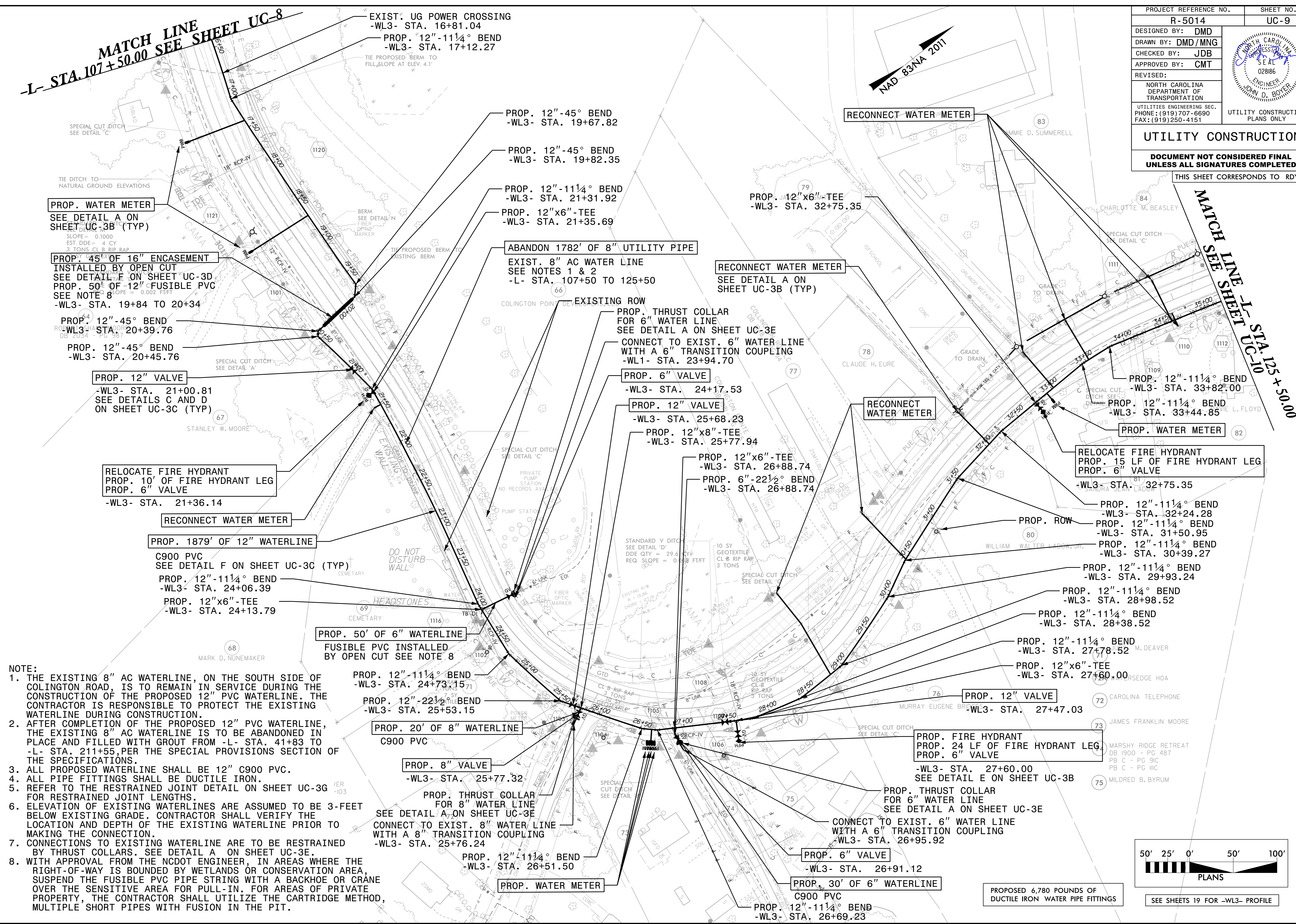
REVISIONS

8/17/99

8/17/99

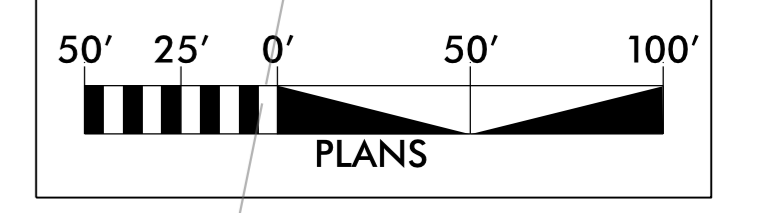
MATCH LINE
-L- STA. 107+50.00 SEE SHEET UC-8

PROJECT REFERENCE NO.	SHEET NO.
R-5014	UC-9
DESIGNED BY: DMD	
DRAWN BY: DMD/MNG	
CHECKED BY: JDB	
APPROVED BY: CMT	
REVISED:	UTILITY CONSTRUCTION PLANS ONLY
NORTH CAROLINA DEPARTMENT OF TRANSPORTATION	
UTILITIES ENGINEERING SEC. PHONE: (919) 707-6690 FAX: (919) 250-4151	
UTILITY CONSTRUCTION PLANS ONLY	
UTILITY CONSTRUCTION	
DOCUMENT NOT CONSIDERED FINAL UNLESS ALL SIGNATURES COMPLETED	
THIS SHEET CORRESPONDS TO RDY-11	



MATCH LINE
SEE SHEET UC-10
STA. 125+50.00

- NOTE:
1. THE EXISTING 8" AC WATERLINE, ON THE SOUTH SIDE OF COLINGTON ROAD, IS TO REMAIN IN SERVICE DURING THE CONSTRUCTION OF THE PROPOSED 12" PVC WATERLINE. THE CONTRACTOR IS RESPONSIBLE TO PROTECT THE EXISTING WATERLINE DURING CONSTRUCTION.
 2. AFTER COMPLETION OF THE PROPOSED 12" PVC WATERLINE, THE EXISTING 8" AC WATERLINE IS TO BE ABANDONED IN PLACE AND FILLED WITH GROUT FROM -L- STA. 41+83 TO -L- STA. 211+55, PER THE SPECIAL PROVISIONS SECTION OF THE SPECIFICATIONS.
 3. ALL PROPOSED WATERLINE SHALL BE 12" C900 PVC.
 4. ALL PIPE FITTINGS SHALL BE DUCTILE IRON.
 5. REFER TO THE RESTRAINED JOINT DETAIL ON SHEET UC-3G FOR RESTRAINED JOINT LENGTHS.
 6. ELEVATION OF EXISTING WATERLINES ARE ASSUMED TO BE 3- FEET BELOW EXISTING GRADE. CONTRACTOR SHALL VERIFY THE LOCATION AND DEPTH OF THE EXISTING WATERLINE PRIOR TO MAKING THE CONNECTION.
 7. CONNECTIONS TO EXISTING WATERLINE ARE TO BE RESTRAINED BY THRUST COLLARS. SEE DETAIL A ON SHEET UC-3E.
 8. WITH APPROVAL FROM THE NCDOT ENGINEER, IN AREAS WHERE THE RIGHT-OF-WAY IS BOUNDED BY WETLANDS OR CONSERVATION AREA, SUSPEND THE FUSIBLE PVC PIPE STRING WITH A BACKHOE OR CRANE OVER THE SENSITIVE AREA FOR PULL-IN. FOR AREAS OF PRIVATE PROPERTY, THE CONTRACTOR SHALL UTILIZE THE CARTRIDGE METHOD, MULTIPLE SHORT PIPES WITH FUSION IN THE PIT.



SEE SHEETS 19 FOR -WL3- PROFILE

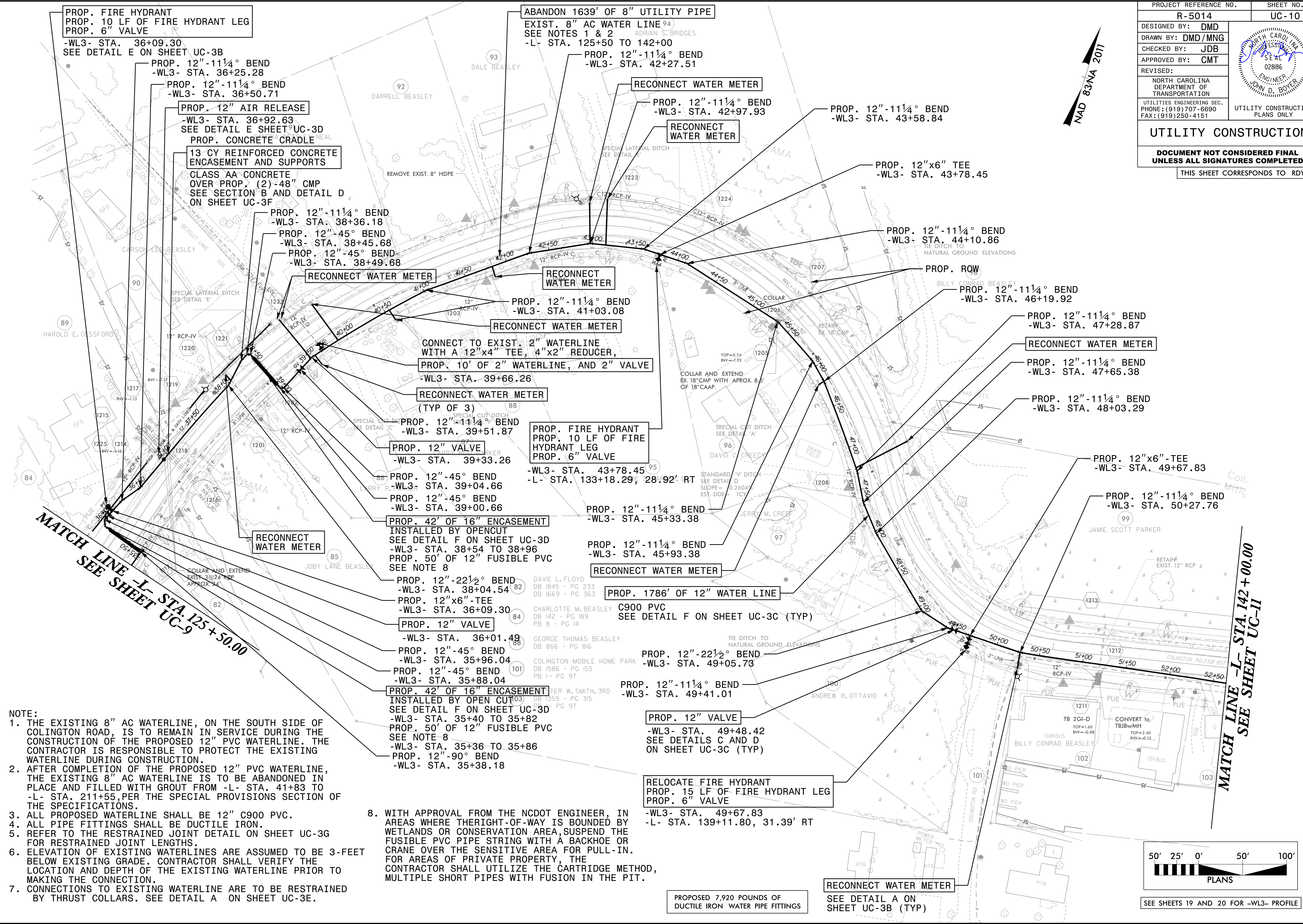
REVISIONS

PROJECT REFERENCE NO.	SHEET NO.
R-5014	UC-10
DESIGNED BY: DMD	
DRAWN BY: DMD/MNG	
CHECKED BY: JDB	
APPROVED BY: CMT	
REVISED:	UTILITY CONSTRUCTION PLANS ONLY
NORTH CAROLINA DEPARTMENT OF TRANSPORTATION	
UTILITIES ENGINEERING SEC. PHONE: (919) 707-6690 FAX: (919) 250-4151	

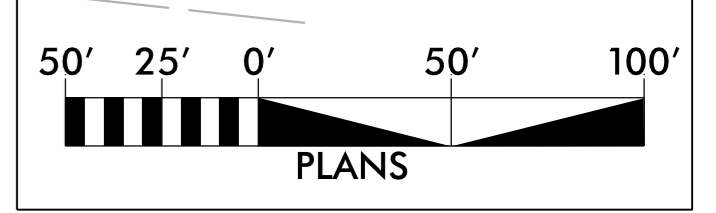
UTILITY CONSTRUCTION

DOCUMENT NOT CONSIDERED FINAL UNLESS ALL SIGNATURES COMPLETED

THIS SHEET CORRESPONDS TO RDY-12



- NOTE:**
1. THE EXISTING 8" AC WATERLINE, ON THE SOUTH SIDE OF COLINGTON ROAD, IS TO REMAIN IN SERVICE DURING THE CONSTRUCTION OF THE PROPOSED 12" PVC WATERLINE. THE CONTRACTOR IS RESPONSIBLE TO PROTECT THE EXISTING WATERLINE DURING CONSTRUCTION.
 2. AFTER COMPLETION OF THE PROPOSED 12" PVC WATERLINE, THE EXISTING 8" AC WATERLINE IS TO BE ABANDONED IN PLACE AND FILLED WITH GROUT FROM -L- STA. 41+83 TO -L- STA. 211+55, PER THE SPECIAL PROVISIONS SECTION OF THE SPECIFICATIONS.
 3. ALL PROPOSED WATERLINE SHALL BE 12" C900 PVC.
 4. ALL PIPE FITTINGS SHALL BE DUCTILE IRON.
 5. REFER TO THE RESTRAINED JOINT DETAIL ON SHEET UC-3G FOR RESTRAINED JOINT LENGTHS.
 6. ELEVATION OF EXISTING WATERLINES ARE ASSUMED TO BE 3- FEET BELOW EXISTING GRADE. CONTRACTOR SHALL VERIFY THE LOCATION AND DEPTH OF THE EXISTING WATERLINE PRIOR TO MAKING THE CONNECTION.
 7. CONNECTIONS TO EXISTING WATERLINE ARE TO BE RESTRAINED BY THRUST COLLARS. SEE DETAIL A ON SHEET UC-3E.
 8. WITH APPROVAL FROM THE NCDOT ENGINEER, IN AREAS WHERE THERIGHT-OF-WAY IS BOUNDED BY WETLANDS OR CONSERVATION AREA, SUSPEND THE FUSIBLE PVC PIPE STRING WITH A BACKHOE OR CRANE OVER THE SENSITIVE AREA FOR PULL-IN. FOR AREAS OF PRIVATE PROPERTY, THE CONTRACTOR SHALL UTILIZE THE CARTRIDGE METHOD, MULTIPLE SHORT PIPES WITH FUSION IN THE PIT.



SEE SHEETS 19 AND 20 FOR -WL3- PROFILE

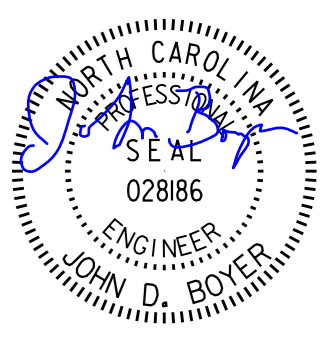
REVISIONS

8/17/99
SYSTEM: UC10UC10_01 UC10_01.dgn
USER: GYANTM

8/17/99

NOTE:

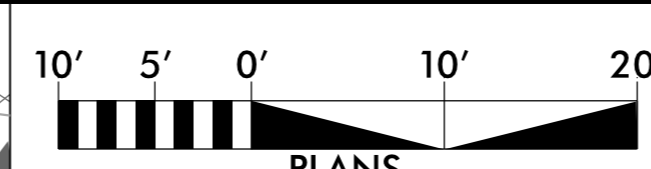
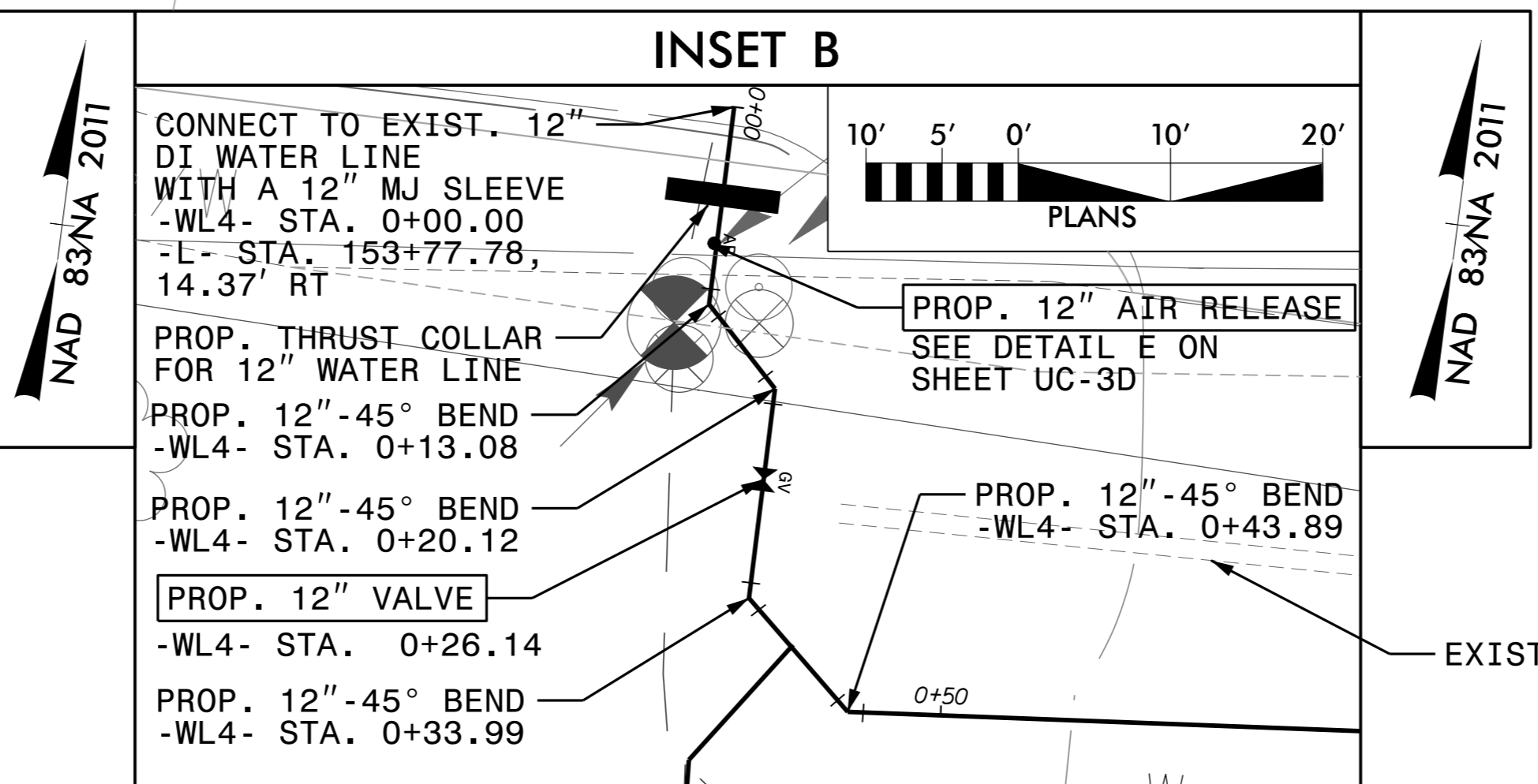
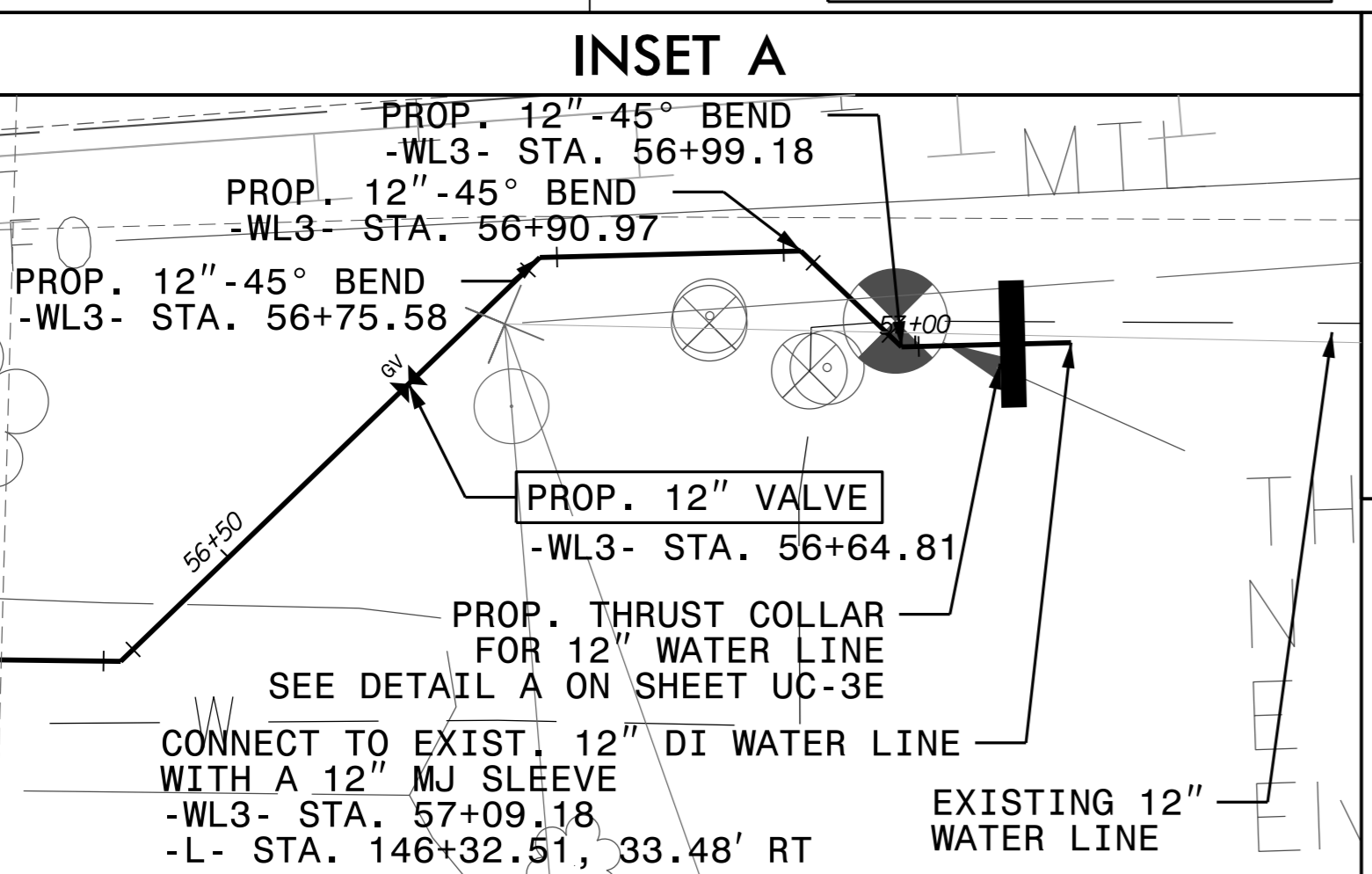
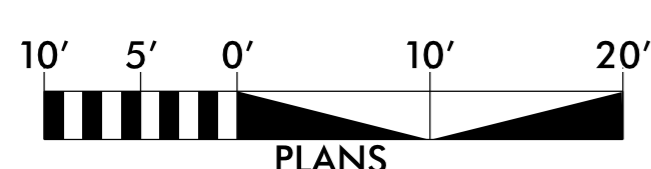
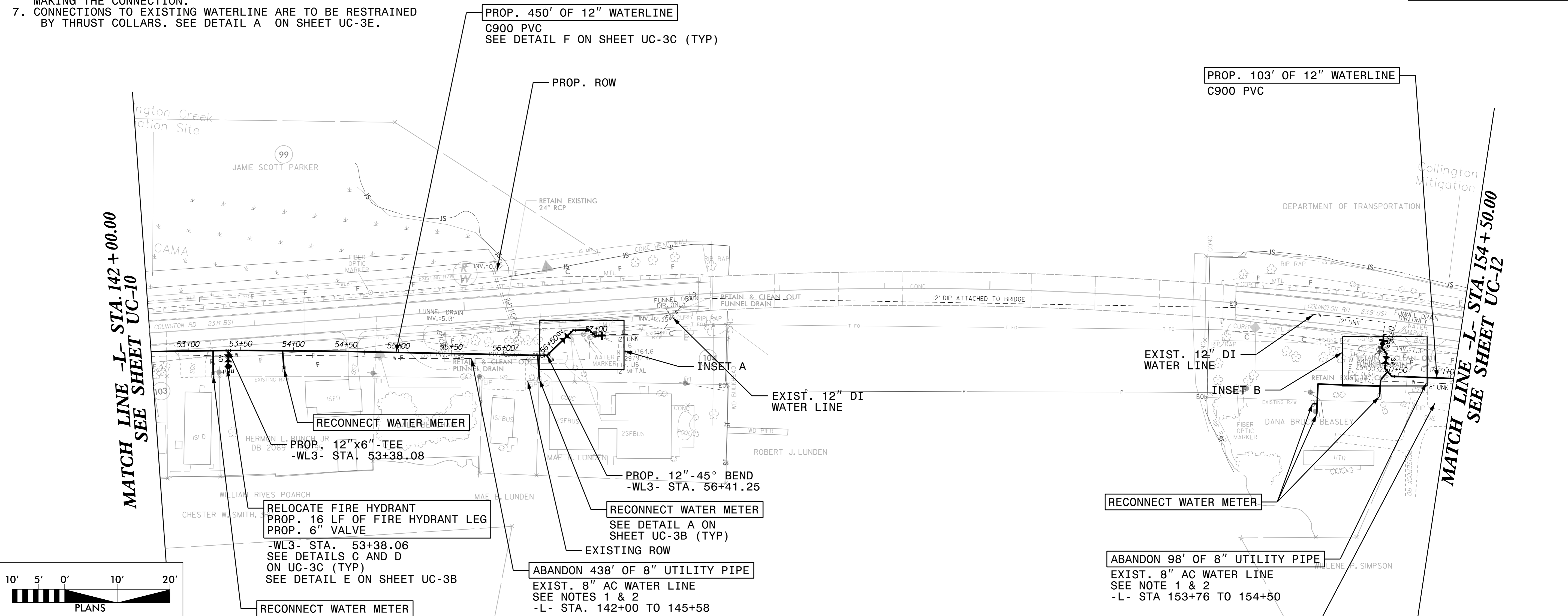
1. THE EXISTING 8" AC WATERLINE, ON THE SOUTH SIDE OF COLINGTON ROAD, IS TO REMAIN IN SERVICE DURING THE CONSTRUCTION OF THE PROPOSED 12" PVC WATERLINE. THE CONTRACTOR IS RESPONSIBLE TO PROTECT THE EXISTING WATERLINE DURING CONSTRUCTION.
2. AFTER COMPLETION OF THE PROPOSED 12" PVC WATERLINE, THE EXISTING 8" AC WATERLINE IS TO BE ABANDONED IN PLACE AND FILLED WITH GROUT FROM -L- STA. 41+83 TO -L- STA. 211+55, PER THE SPECIAL PROVISIONS SECTION OF THE SPECIFICATIONS.
3. ALL PROPOSED WATERLINE SHALL BE 12" C900 PVC.
4. ALL PIPE FITTINGS SHALL BE DUCTILE IRON.
5. REFER TO THE RESTRAINED JOINT DETAIL ON SHEET UC-3G FOR RESTRAINED JOINT LENGTHS.
6. ELEVATION OF EXISTING WATERLINES ARE ASSUMED TO BE 3- FEET BELOW EXISTING GRADE. CONTRACTOR SHALL VERIFY THE LOCATION AND DEPTH OF THE EXISTING WATERLINE PRIOR TO MAKING THE CONNECTION.
7. CONNECTIONS TO EXISTING WATERLINE ARE TO BE RESTRAINED BY THRUST COLLARS. SEE DETAIL A ON SHEET UC-3E.

PROJECT REFERENCE NO.	R-5014	SHEET NO.	UC-11
DESIGNED BY:	DMD		
DRAWN BY:	DMD/MNG		
CHECKED BY:	JDB		
APPROVED BY:	CMT		
REVISED:			
NORTH CAROLINA DEPARTMENT OF TRANSPORTATION		UTILITY CONSTRUCTION PLANS ONLY	

UTILITY CONSTRUCTION

DOCUMENT NOT CONSIDERED FINAL UNLESS ALL SIGNATURES COMPLETED

THIS SHEET CORRESPONDS TO RDY-13



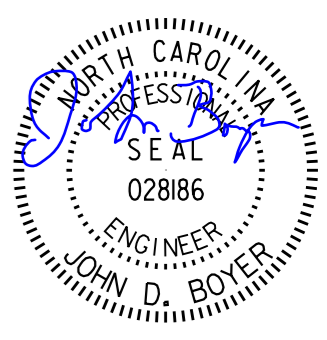
PROPOSED 2,765 POUNDS OF DUCTILE IRON WATER PIPE FITTINGS

SEE SHEET 20 FOR -WL3- AND -WL4- PROFILE

REVISIONS

MATCH LINE -L- STA. 142+00.00 SEE SHEET UC-10

MATCH LINE -L- STA. 154+50.00 SEE SHEET UC-12

PROJECT REFERENCE NO.	SHEET NO.
R-5014	UC-12
DESIGNED BY: DMD	
DRAWN BY: DMD/MNG	
CHECKED BY: JDB	
APPROVED BY: CMT	
REVISED:	
NORTH CAROLINA DEPARTMENT OF TRANSPORTATION	
UTILITY ENGINEERING SEC. PHONE: (919) 707-6690 FAX: (919) 250-4151	
UTILITY CONSTRUCTION PLANS ONLY	

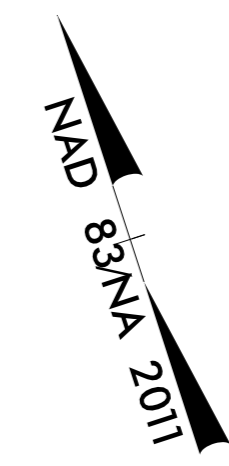
UTILITY CONSTRUCTION

DOCUMENT NOT CONSIDERED FINAL UNLESS ALL SIGNATURES COMPLETED

THIS SHEET CORRESPONDS TO RDY-14

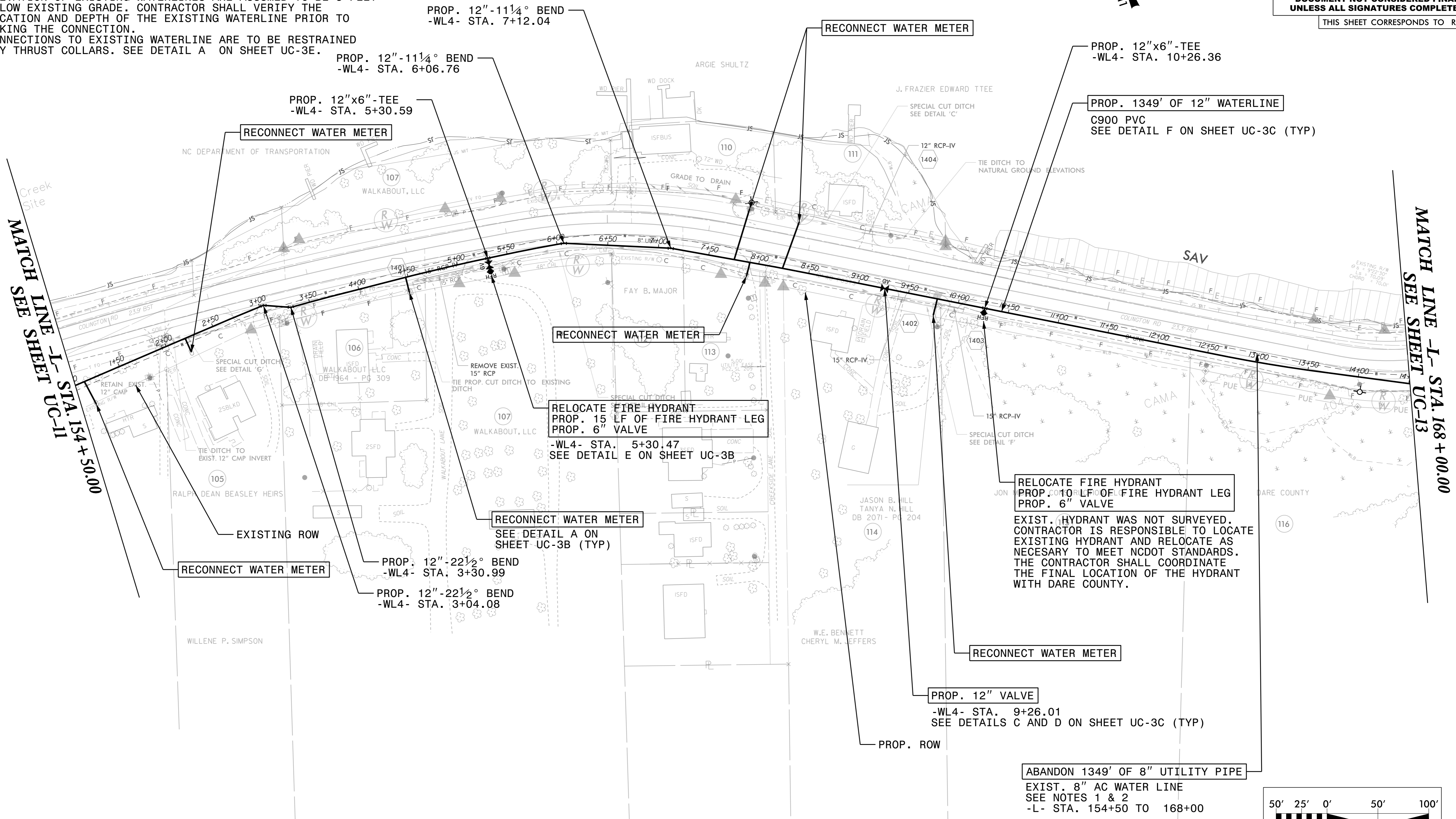
8/17/99

- NOTE:**
1. THE EXISTING 8" AC WATERLINE, ON THE SOUTH SIDE OF COLINGTON ROAD, IS TO REMAIN IN SERVICE DURING THE CONSTRUCTION OF THE PROPOSED 12" PVC WATERLINE. THE CONTRACTOR IS RESPONSIBLE TO PROTECT THE EXISTING WATERLINE DURING CONSTRUCTION.
 2. AFTER COMPLETION OF THE PROPOSED 12" PVC WATERLINE, THE EXISTING 8" AC WATERLINE IS TO BE ABANDONED IN PLACE AND FILLED WITH GROUT FROM -L- STA. 41+83 TO -L- STA. 211+55, PER THE SPECIAL PROVISIONS SECTION OF THE SPECIFICATIONS.
 3. ALL PROPOSED WATERLINE SHALL BE 12" C900 PVC.
 4. ALL PIPE FITTINGS SHALL BE DUCTILE IRON.
 5. REFER TO THE RESTRAINED JOINT DETAIL ON SHEET UC-3G FOR RESTRAINED JOINT LENGTHS.
 6. ELEVATION OF EXISTING WATERLINES ARE ASSUMED TO BE 3-FEET BELOW EXISTING GRADE. CONTRACTOR SHALL VERIFY THE LOCATION AND DEPTH OF THE EXISTING WATERLINE PRIOR TO MAKING THE CONNECTION.
 7. CONNECTIONS TO EXISTING WATERLINE ARE TO BE RESTRAINED BY THRUST COLLARS. SEE DETAIL A ON SHEET UC-3E.



MATCH LINE -L- STA. 154+50.00
SEE SHEET UC-11

MATCH LINE -L- STA. 168+00.00
SEE SHEET UC-13



PROP. 12"-11¼° BEND
-WL4- STA. 7+12.04

PROP. 12"-11¼° BEND
-WL4- STA. 6+06.76

PROP. 12"x6"-TEE
-WL4- STA. 5+30.59

PROP. 12"x6"-TEE
-WL4- STA. 10+26.36

PROP. 1349' OF 12" WATERLINE
C900 PVC
SEE DETAIL F ON SHEET UC-3C (TYP)

RELOCATE FIRE HYDRANT
PROP. 15 LF OF FIRE HYDRANT LEG
PROP. 6" VALVE
-WL4- STA. 5+30.47
SEE DETAIL E ON SHEET UC-3B

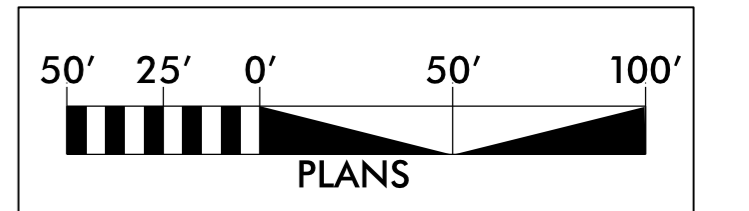
RELOCATE FIRE HYDRANT
PROP. 10 LF OF FIRE HYDRANT LEG
PROP. 6" VALVE

EXIST. HYDRANT WAS NOT SURVEYED.
CONTRACTOR IS RESPONSIBLE TO LOCATE
EXISTING HYDRANT AND RELOCATE AS
NECESSARY TO MEET NCDOT STANDARDS.
THE CONTRACTOR SHALL COORDINATE
THE FINAL LOCATION OF THE HYDRANT
WITH DARE COUNTY.

ABANDON 1349' OF 8" UTILITY PIPE
EXIST. 8" AC WATER LINE
SEE NOTES 1 & 2
-L- STA. 154+50 TO 168+00

REVISIONS

SYSTEM: UC12UC12.dgn
USER: GYANTM



PROPOSED 1,530 POUNDS OF
DUCTILE IRON WATER PIPE FITTINGS

SEE SHEETS 20 AND 21 FOR -WL4- PROFILE