


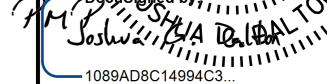


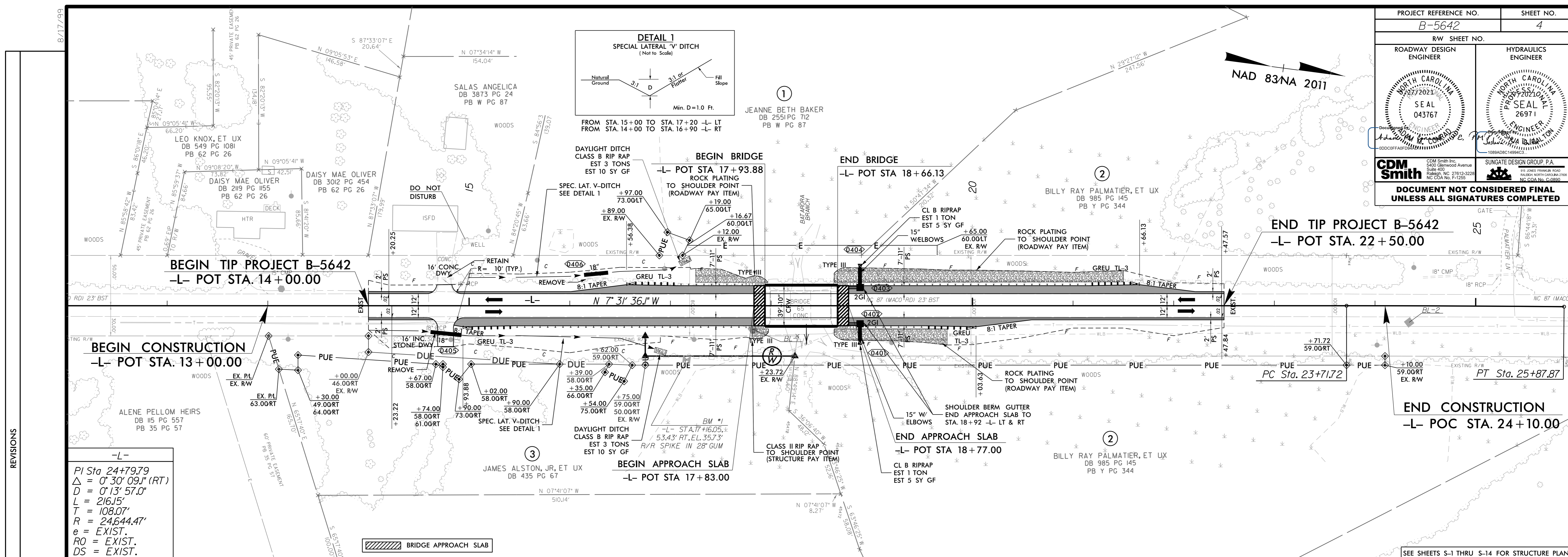


PROJECT REFERENCE NO. B-5642		SHEET NO. 4	
ROADWAY DESIGN ENGINEER		HYDRAULICS ENGINEER	
 SEAL 043767		 SEAL 26971	
 SEAL 1089ADBC149943			
 SEAL 1089ADBC149943			
 SEAL 1089ADBC149943			
 SEAL 1089ADBC149943			
DOCUMENT NOT CONSIDERED FINAL UNLESS ALL SIGNATURES COMPLETED			

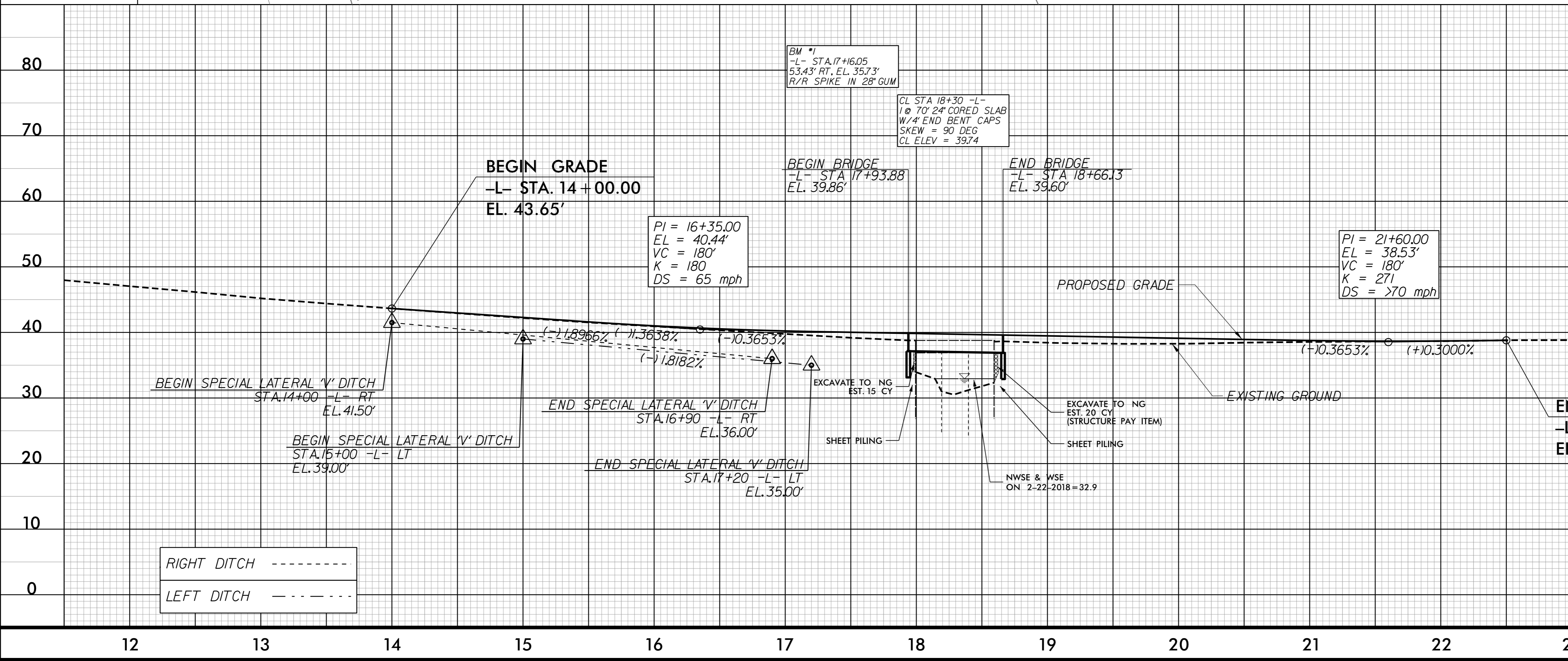


-L-
 PI Sta 24+79.79
 $\Delta = 0^\circ 30' 09.1\"$ (RT)
 $D = 0' 13' 57.0\"$
 $L = 216.15'$
 $T = 108.07'$
 $R = 24,644.47'$
 $e = EXIST.$
 $ro = EXIST.$
 $DS = EXIST.$

 BRIDGE APPROACH SLAB

SEE SHEETS S-1 THRU S-14 FOR STRUCTURE PLANS

DESIGN DISCHARGE	= 860	CFS	80
DESIGN FREQUENCY	= 50	YRS	
DESIGN HW ELEVATION	= 35.2	FT	70
BASE DISCHARGE	= 1050	CFS	
BASE FREQUENCY	= 100	YRS	60
BASE HW ELEVATION	= 35.6	FT	
OVERTOPPING DISCHARGE	= 2600	CFS	50
OVERTOPPING FREQUENCY	= +500	YRS	
OVERTOPPING ELEVATION	= 38.7	FT	40
DATE OF SURVEY	= 2-22-2018		
W.S. ELEVATION AT DATE OF SURVEY	= 32.9	FT	30



RIGHT DITCH -----
 LEFT DITCH - . - . - .

-SYS TIME B6642_Prd_rpsrh_04.dgn
 11:57:00 AM 11/15/2018