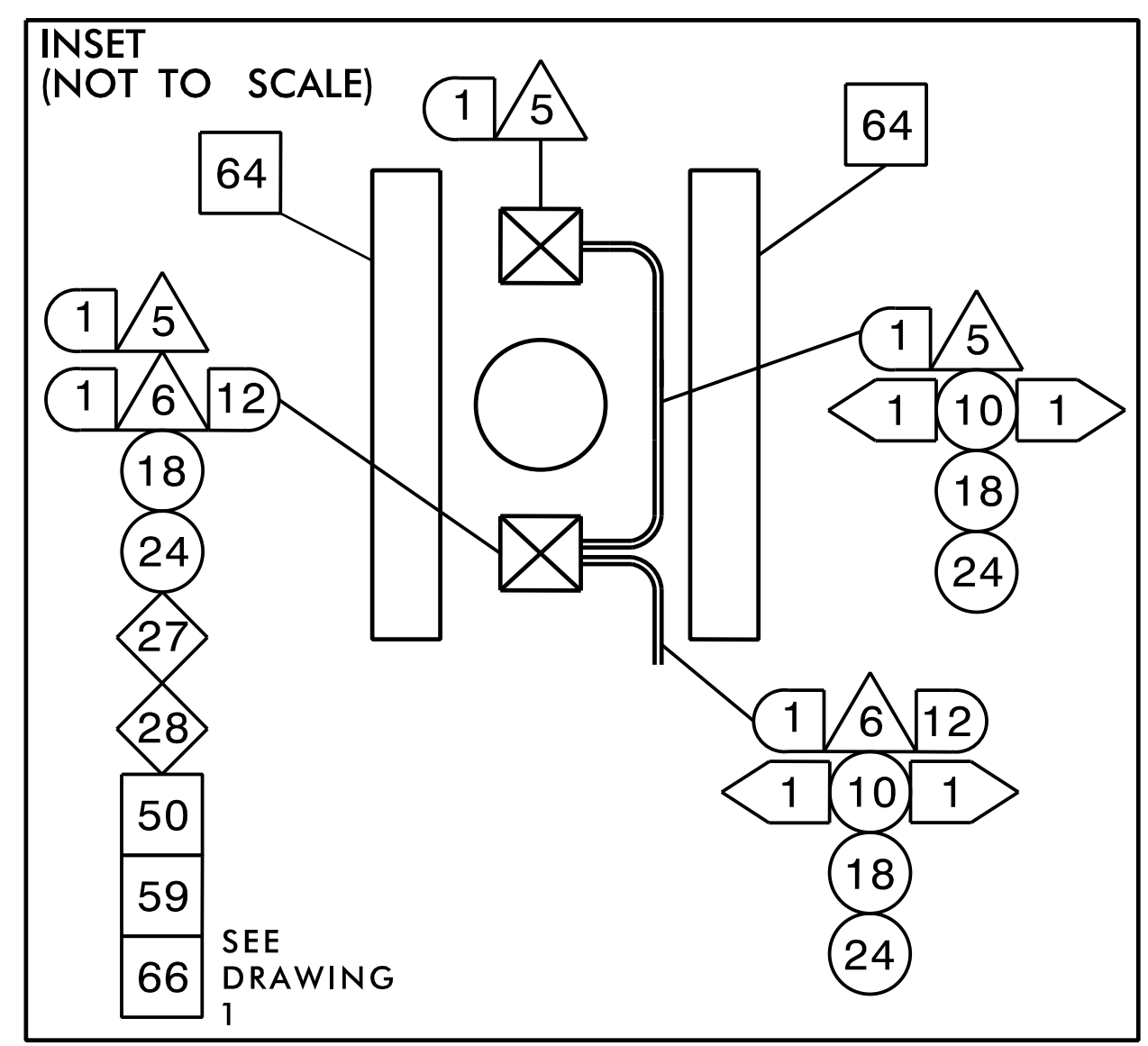
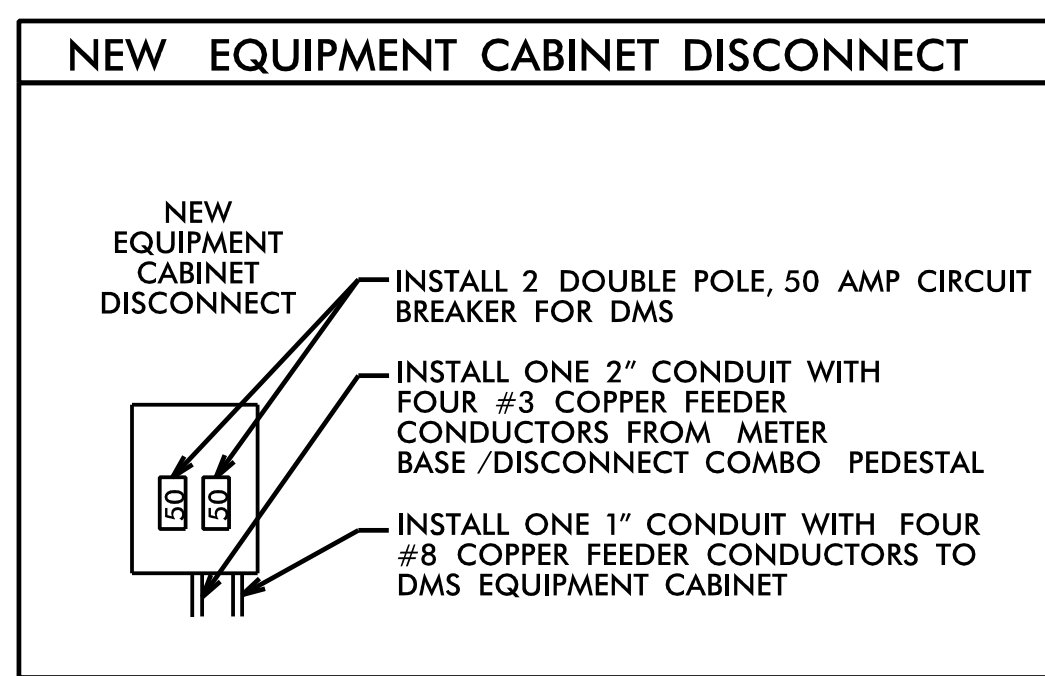


NOTES:

- SIX (6) WEEKS PRIOR TO BEGINNING WORK ON THE SIGNAL SYSTEM, CONTACT THE DIVISION 3 DEPUTY TRAFFIC ENGINEER STONEWALL (STONEY) MATHIS, AT (910) 341-2200 TO ARRANGE FOR THE DIVISION TO PROGRAM THE NEW FIELD ETHERNET SWITCHES WITH THE NECESSARY NETWORK CONFIGURATION DATA, INCLUDING BUT NOT LIMITED TO: THE PROJECT IP ADDRESS, DEFAULT GATEWAY SUBNET MASK AND VLAN ID INFORMATION. NOTIFY THE DEPUTY TRAFFIC ENGINEER AFTER ALL WORK IS PERFORMED TO ENSURE THAT ALL FIBER CIRCUITS ARE FUNCTIONING PROPERLY. WORK IS NOT COMPLETE UNTIL THE SIGNAL SYSTEM IS BACK UP AND FUNCTIONAL.
- CONTACT BRUNSWICK ELECTRIC MEMBERSHIP CORPORATION (910) 754-4391 TO ARRANGE FOR POWER TO ELECTRICAL SERVICE.
- CONTACT STONEY MATHIS (NCDOT DIVISION 3) AT (910) 341-2200 TO COORDINATE ANY TRAFFIC SIGNAL SERVICE MODIFICATIONS.
- MAINTAIN A MINIMUM OF SIX (6) FEET FROM THE EDGE OF PAVEMENT AND A MINIMUM OF FIVE (5) FEET BEHIND THE MSE WALL WHEN TRENCHING PARALLEL TO THE ROADWAY.
- SEAL ALL CONDUIT ENTRANCES WITH DUCT AND CONDUIT SEALER AT ALL JUNCTION BOX / CABINET ENTRANCES.
- ETHERNET EDGE SWITCH INSTALLED FOR TEMPORARY AND FINAL SIGNAL COMMUNICATIONS.
- AT THE DIRECTION OF THE ENGINEER, PERFORM GRADING AS NEEDED WHERE GUARDRAIL, POLE INSTALLATION, AND DMS CONSTRUCTION WORK HAS BEEN PERFORMED.
- INSTALL CONDUITS IN THE SAME TRENCH. DO NOT INSTALL ELECTRICAL POWER CONDUCTORS AND FIBER-OPTIC CABLE IN THE SAME CONDUIT OR JUNCTION BOX.
- INSTALL FIBER OPTIC CABLE IN CONDUIT INSTALLED ON BRIDGE.
- INTERCEPT EXISTING JUNCTION BOXES FOR CONDUIT INSTALLED ON BRIDGE.
- IT IS THE CONTRACTOR'S RESPONSIBILITY TO OBTAIN THE AVAILABLE FAULT CURRENT INFORMATION FROM THE POWER COMPANY FOR THE REQUIRED ELECTRICAL SERVICE AND PLACE A "FAULT CURRENT" STICKER INSIDE THE SERVICE DISCONNECT PANEL WITH THE DATE AND AVAILABLE FAULT CURRENT ON THE STICKER.
- AFTER THE FIBER OPTIC CABLE CONSTRUCTION IS COMPLETE AND TRAFFIC IS IN THE FINAL PATTERN, REMOVE THE EXISTING WIRELESS ASSEMBLY AND DELIVER TO DIVISION 3 TRAFFIC SERVICES.
- NCDOT DIVISION 3 WILL FURNISH AND INSTALL THE CCTV AND DMS CELL MODEM. CONTACT SIX (6) WEEKS PRIOR BEGINNING WORK.



DRAWING 1



HNTB
 HNTB NORTH CAROLINA, P.C.
 343 E. Six Forks Road, Suite 200
 Raleigh, North Carolina 27609
 NC License No: C-1554
 (919) 546-8997

TMP - FINAL

DOCUMENT NOT CONSIDERED FINAL UNLESS ALL SIGNATURES COMPLETED

	NC 211 (SOUTHPORT-SUPPLY RD / HOWE ST) CABLE ROUTING PLAN		
	Division 3 Brunswick Co. Southport	PLAN DATE: June 2017	
PREPARED BY: N.K. Vlanich	REVIEWED BY: N.R. Simmons	DATE: 9/9/2021	SIGNATURE: _____ DATE: _____

Scale: 1" = 50'

CADD File Name: R5021_scp-39.dgn