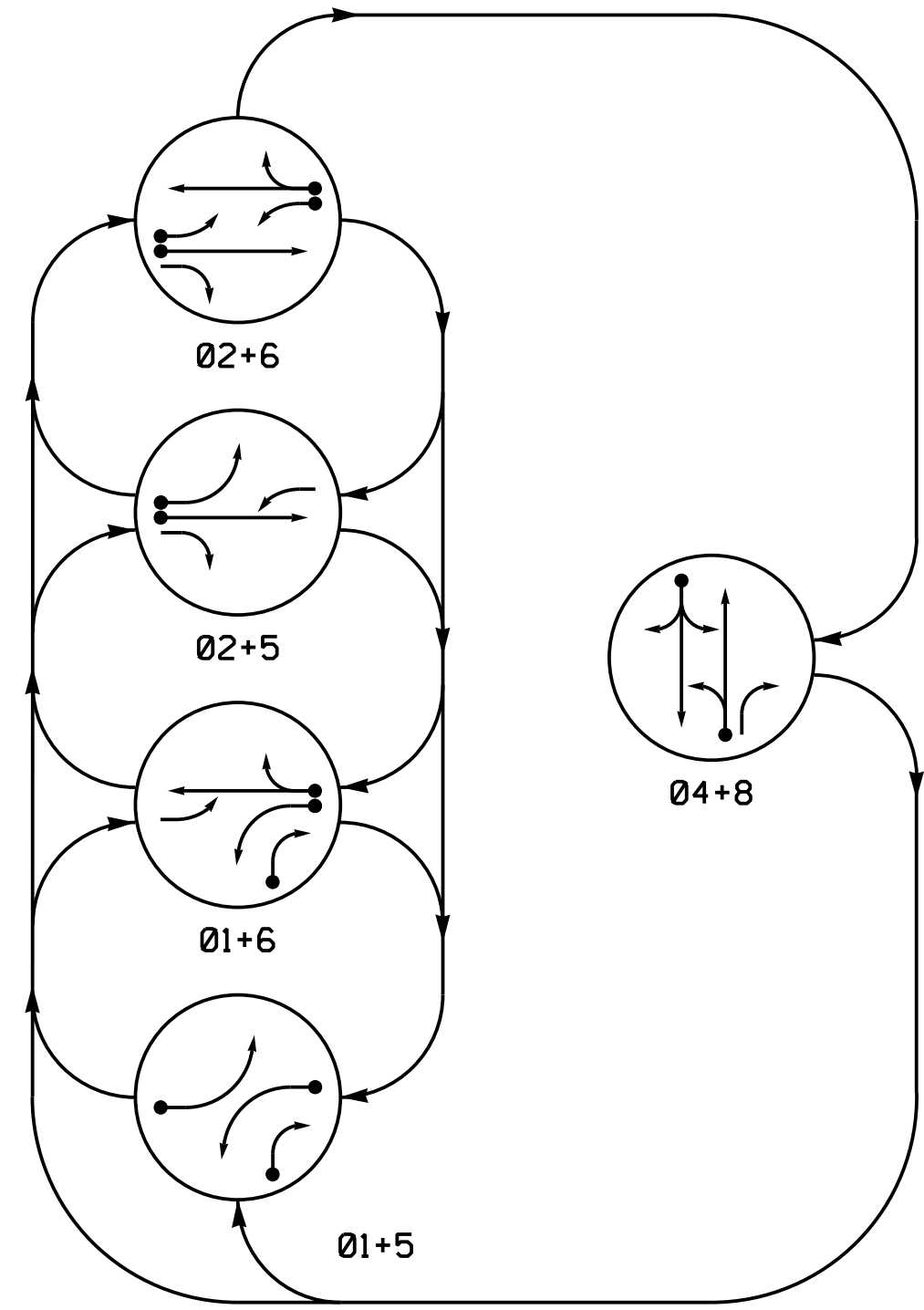
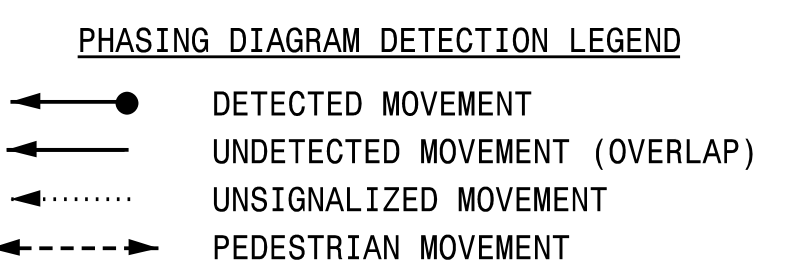
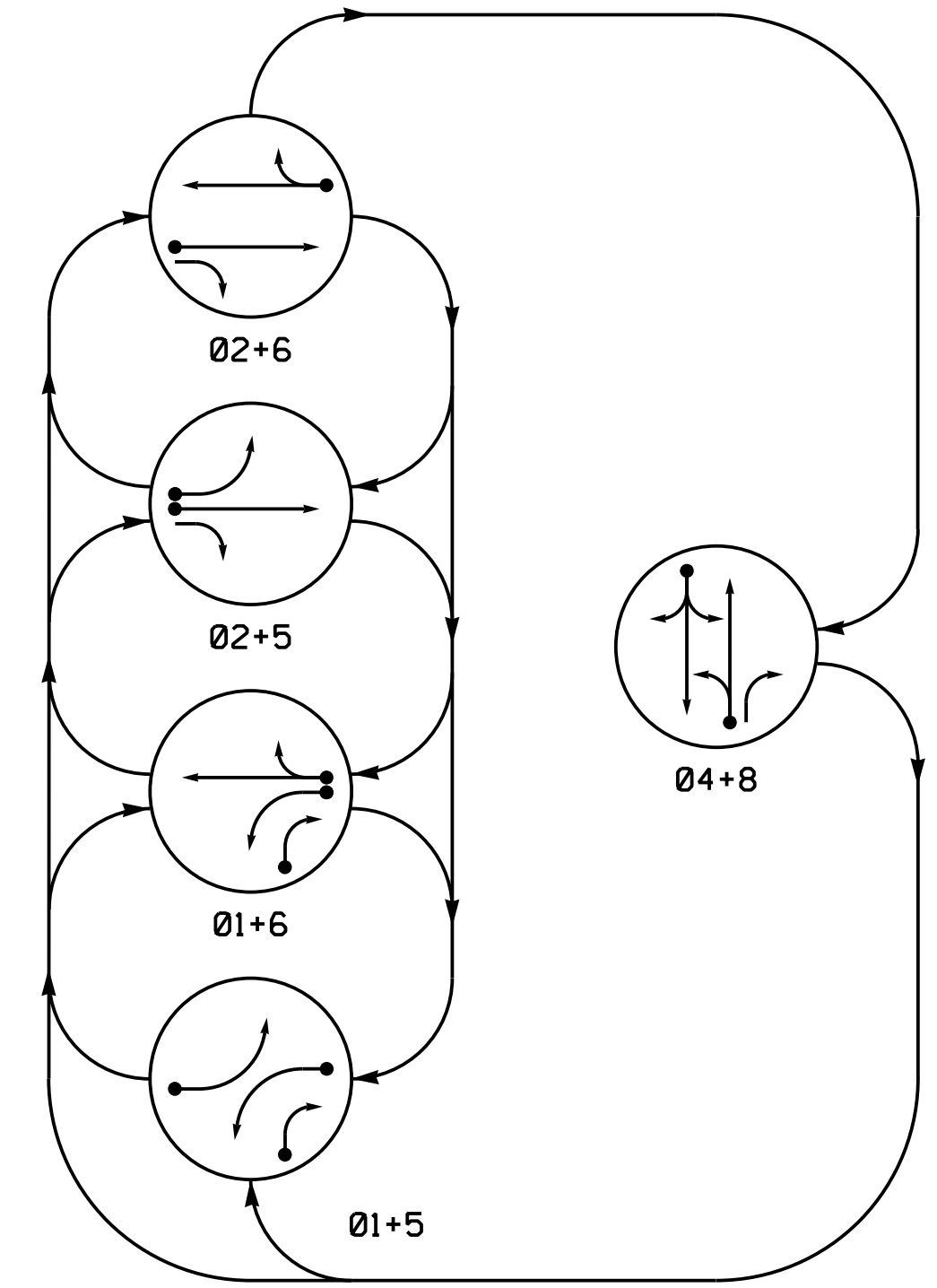


DEFAULT PHASING DIAGRAM



ALTERNATE PHASING DIAGRAM



DEFAULT PHASING TABLE OF OPERATION

SIGNAL FACE	PHASE					
	01+5	01+6	02+5	02+6	04+8	F
11	-	-	F	F	R	Y
21,22	R	R	G	G	R	Y
41,42	R	R	R	R	G	R
51	-	F	F	F	R	Y
61,62	R	G	R	G	R	Y
81	R	R	R	R	G	R
82	R	R	R	R	G	R

ALTERNATE PHASING TABLE OF OPERATION

SIGNAL FACE	PHASE					
	01+5	01+6	02+5	02+6	04+8	F
11	-	-	R	R	R	Y
21,22	R	R	G	G	R	Y
41,42	R	R	R	R	G	R
51	-	R	R	R	R	Y
61,62	R	G	R	G	R	Y
81	R	R	R	R	G	R
82	R	R	R	R	G	R

OASIS 2070 LOOP & DETECTOR INSTALLATION CHART

LOOP	SIZE (FT)	DISTANCE FROM STOPBAR (FT)	TURNS	DETECTOR PROGRAMMING								
				NEW LOOP	PHASE	CALLING	EXTENSION	FULL TIME DELAY	STRETCH TIME	DELAY TIME	SYSTEM LOOP	NEW CARD
1A	6X40	0	*	*	1	Y	Y	-	-	***15	-	Y
1B	6X40	0	*	*	1	Y	Y	-	-	15	-	Y
2A	6X6	420	*	*	2	Y	Y	-	-	-	-	Y
4A	6X40	0	*	*	4	Y	Y	-	-	-	-	Y
5A	6X40	0	*	*	5	Y	Y	-	-	***15	-	Y
6A	6X6	420	*	*	6	Y	Y	-	-	-	-	Y
8A	6X40	0	*	*	8	Y	Y	-	-	-	-	Y

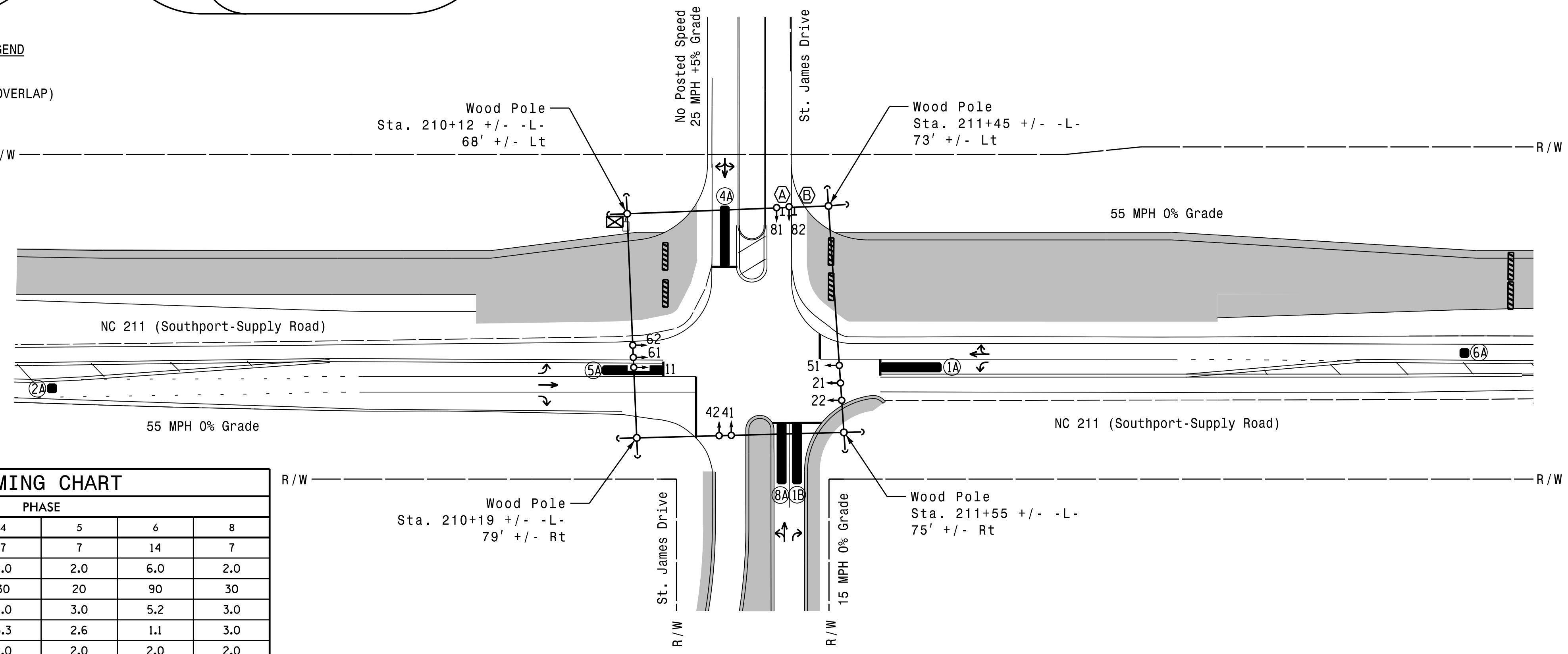
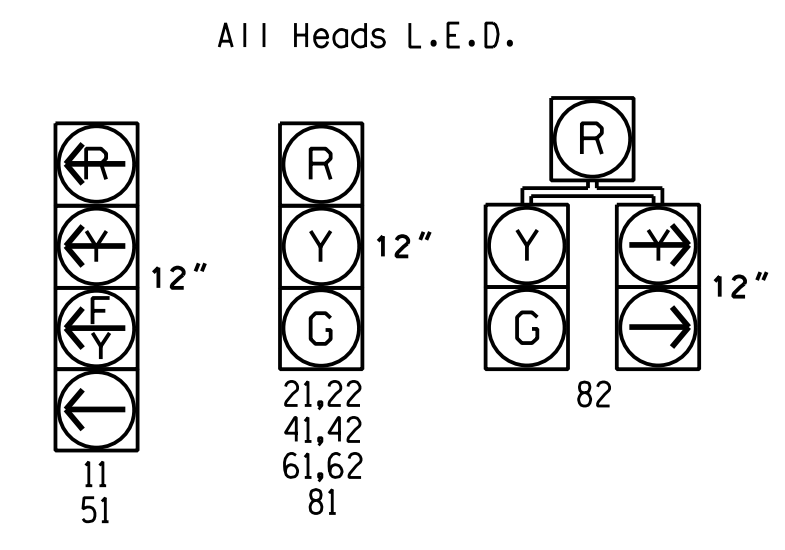
5 Phase Fully Actuated Isolated

NOTES

- Refer to "Roadway Standard Drawings NCDOT" dated January 2018 and "Standard Specifications for Roads and Structures" dated January 2018.
- Do not program signal for late night flashing operation unless otherwise directed by the Engineer.
- Phase 1 and/or phase 5 may be lagged.
- Set all detector units to presence mode.
- The Division Traffic Engineer will determine the hours of use for each phasing plan.
- Locate new cabinet so as not to obstruct sight distance of vehicles turning right on red.
- Incorporate Microwave Detection system for vehicle detection.
- Provide the Engineer with the Manufacturer's approved Microwave Detection locations and mounting heights to obtain detection zones as shown.

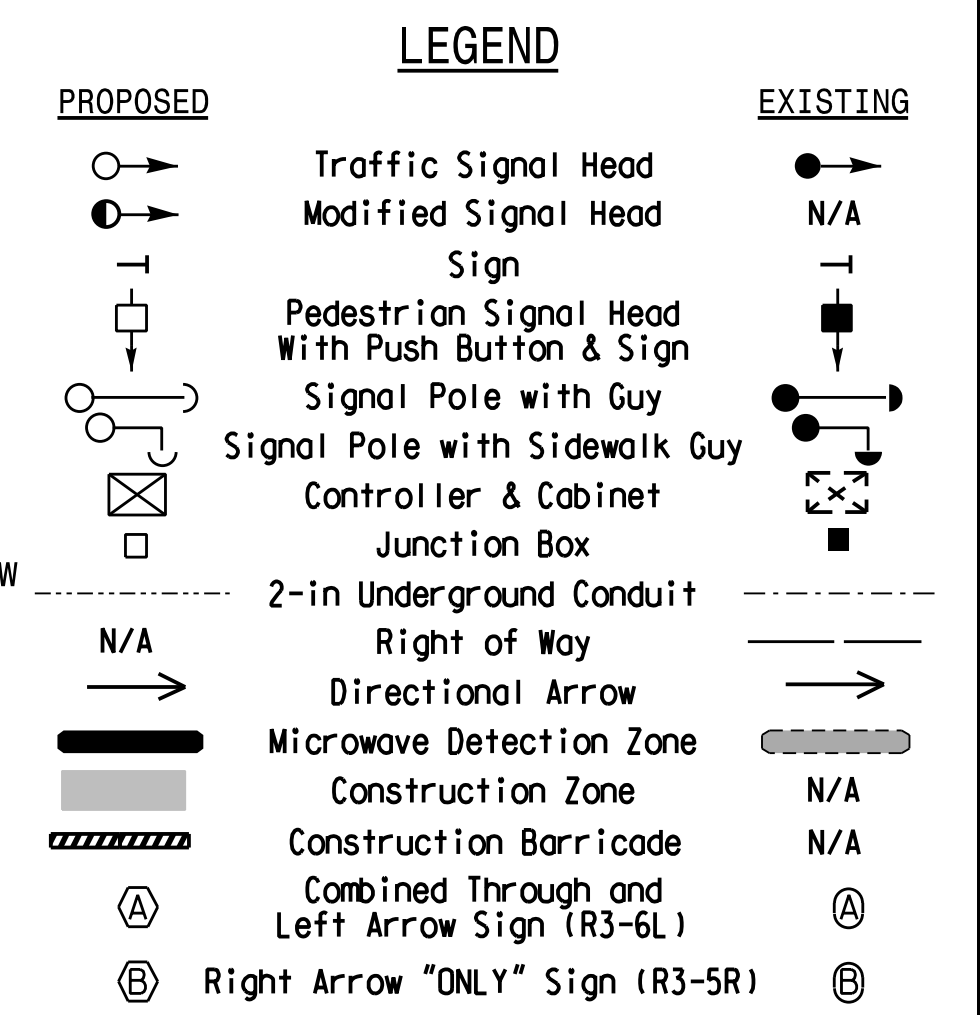
* Multizone Microwave Detection.
 ** Disable phase 2 and 6 call for 1A and 5A during alternate phasing operation.
 *** Reduce delay to 3 seconds during alternate phasing operation.

SIGNAL FACE I.D.



OASIS 2070 TIMING CHART

FEATURE	PHASE					
	1	2	4	5	6	8
Min Green 1 *	7	14	7	7	14	7
Extension 1 *	2.0	6.0	2.0	2.0	6.0	2.0
Max Green 1 *	20	90	30	20	90	30
Yellow Clearance	3.0	5.2	3.0	3.0	5.2	3.0
Red Clearance	3.3	1.1	3.3	2.6	1.1	3.0
Red Revert	2.0	2.0	2.0	2.0	2.0	2.0
Walk 1 *	-	-	-	-	-	-
Don't Walk 1	-	-	-	-	-	-
Seconds Per Actuation *	-	2.5	-	-	2.5	-
Max Variable Initial *	-	46	-	-	46	-
Time Before Reduction *	-	15	-	-	15	-
Time To Reduce *	-	30	-	-	30	-
Minimum Gap	-	3.4	-	-	3.4	-
Recall Mode	-	MIN RECALL	-	-	MIN RECALL	-
Vehicle Call Memory	-	YELLOW	-	-	YELLOW	-
Dual Entry	-	-	ON	-	-	ON
Simultaneous Gap	ON	ON	ON	ON	ON	ON



Signal Upgrade
 Temporary Design 1
 Construction Phase 1,1a-1e

DOCUMENT NOT CONSIDERED FINAL UNLESS ALL SIGNATURES COMPLETED

Prepared for: **TRANSPORTATION MOBILITY AND SAFETY DIVISION**
 STATE OF NORTH CAROLINA
 DEPARTMENT OF TRANSPORTATION
 Signal Design Section

750 N. Greenfield Pkwy, Garner, NC 27529

NC 211 (Southport-Supply Road) at St. James Drive

Division 03 Brunswick Co. Southport

PLAN DATE: June 2017 REVIEWED BY: A.D. Klinksiek

PREPARED BY: A.H. Thornburg REVIEWED BY: N.R. Simmons

Signature: *Natasha Simmons* 9/10/2021

SIG. INVENTORY NO. 03-097711

HNTB HNTB NORTH CAROLINA, P.C.
 343 E. Six Forks Road, Suite 200
 Raleigh, North Carolina 27609
 NC License No: C-1554
 (919) 546-8997