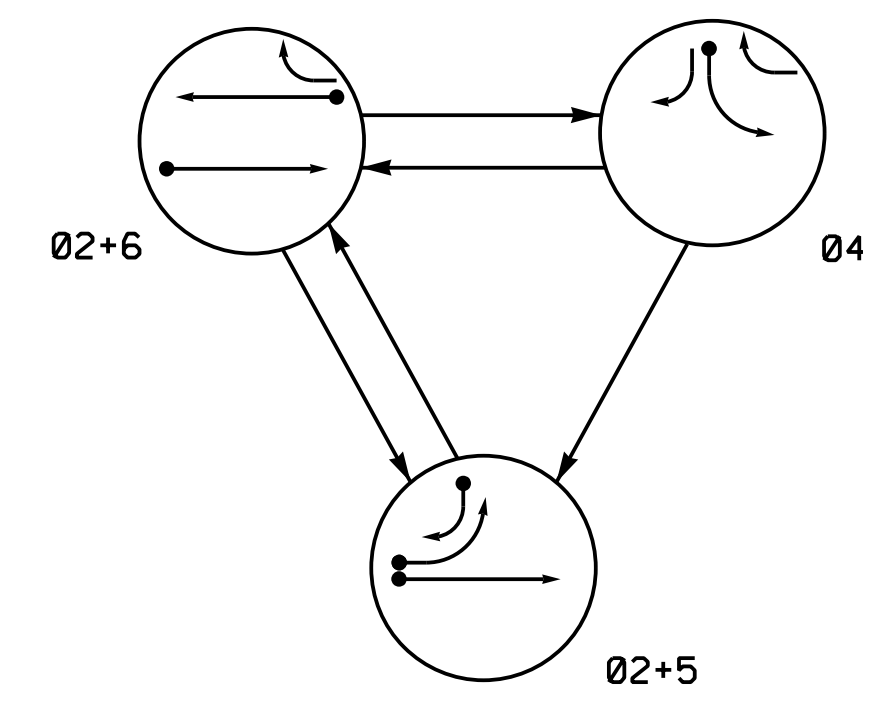


PHASING DIAGRAM

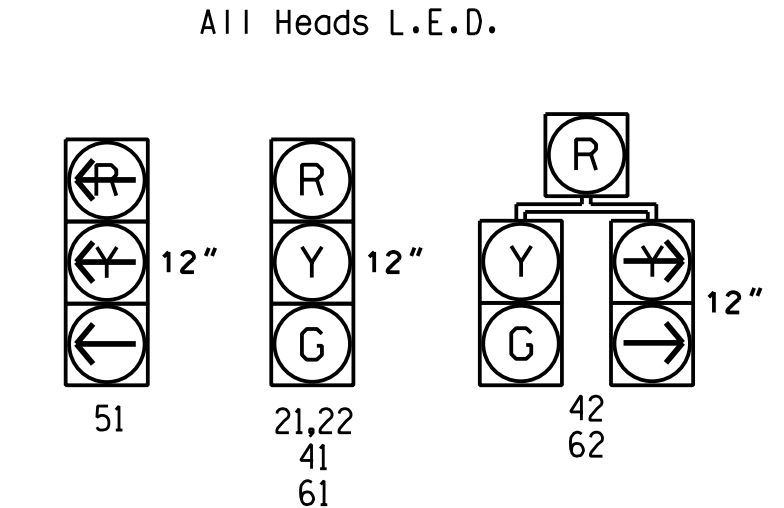


PHASING DIAGRAM DETECTION LEGEND

- DETECTED MOVEMENT
- ◄ UNDETECTED MOVEMENT (OVERLAP)
- ⋯ UNSIGNALIZED MOVEMENT
- ⚡ PEDESTRIAN MOVEMENT

SIGNAL FACE	PHASE			
	02+5	02+6	04	FLASH
21,22	G	G	R	Y
41	R	R	G	R
42	R	R	G	R
51	R	R	R	R
61	R	G	R	Y
62	R	G	R	Y

SIGNAL FACE I.D.



OASIS 2070E LOOP & DETECTOR INSTALLATION CHART

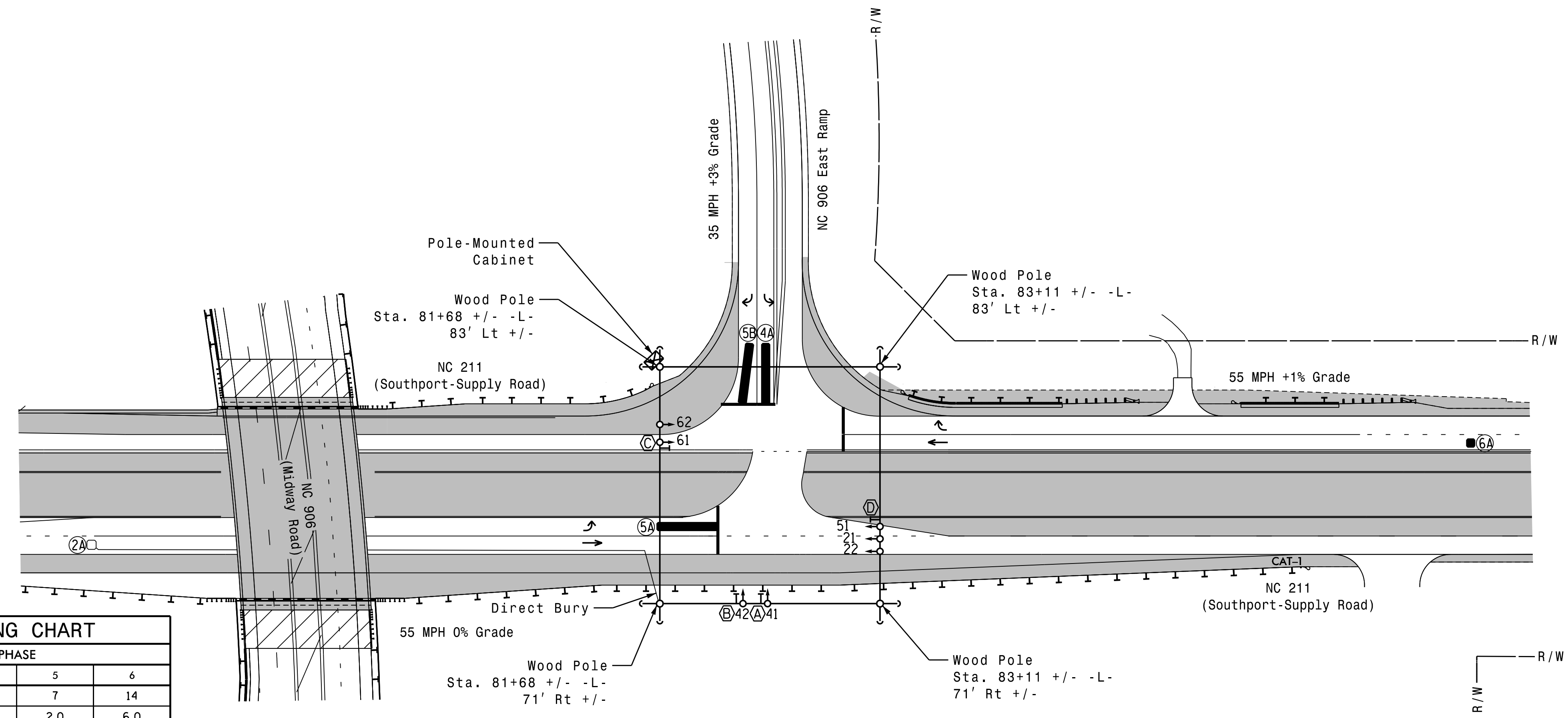
LOOP	SIZE (FT)	DISTANCE FROM STOPBAR (FT)	TURNS	DETECTOR PROGRAMMING								
				NEW LOOP	PHASE	CALLING	EXTENSION	FULL TIME DELAY	STRETCH TIME	DELAY TIME	SYSTEM LOOP	NEW CARD
2A	6X6	420	6	Y	2	Y	Y	-	-	-	-	Y
4A	6X40	0	*	*	4	Y	Y	-	-	-	-	-
5A	6X40	0	*	*	5	Y	Y	-	-	-	-	-
5B	6X40	0	*	*	5	Y	Y	-	-	15	-	-
6A	6X6	420	*	*	6	Y	Y	-	-	-	-	-

* Multizone Microwave Detection.

3 Phase Fully Actuated Isolated

NOTES

- Refer to "Roadway Standard Drawings NCDOT" dated January 2018 and "Standard Specifications for Roads and Structures" dated January 2018.
- Do not program signal for late night flashing operation unless otherwise directed by the Engineer.
- Phase 5 may be lagged.
- Set all detector units to presence mode.
- Locate new cabinet so as not to obstruct sight distance of vehicles turning right on red.
- Incorporate Microwave Detection system for vehicle detection.
- Provide the Engineer with the Manufacturer's approved Microwave Detection locations and mounting heights to obtain detection zones as shown.



FEATURE	PHASE			
	2	4	5	6
Min Green 1 *	14	7	7	14
Extension 1 *	6.0	2.0	2.0	6.0
Max Green 1 *	90	40	30	90
Yellow Clearance	5.2	3.0	3.0	5.1
Red Clearance	1.0	3.1	3.1	1.0
Red Revert	2.0	2.0	2.0	2.0
Walk 1 *	-	-	-	-
Don't Walk 1	-	-	-	-
Seconds Per Actuation *	2.5	-	-	2.5
Max Variable Initial *	46	-	-	46
Time Before Reduction *	15	-	-	15
Time To Reduce *	45	-	-	45
Minimum Gap	3.4	-	-	3.4
Recall Mode	MIN RECALL	-	-	MIN RECALL
Vehicle Call Memory	YELLOW	-	-	YELLOW
Dual Entry	-	-	-	-
Simultaneous Gap	ON	ON	ON	ON

* These values may be field adjusted. Do not adjust Min Green and Extension times for phases 2 and 6 lower than what is shown. Min Green for all other phases should not be lower than 4 seconds.

PROPOSED	LEGEND	EXISTING
○→	Traffic Signal Head	●→
○→	Modified Signal Head	N/A
⊥	Sign	⊥
⊥	Pedestrian Signal Head With Push Button & Sign	⊥
○→	Signal Pole with Guy	○→
○→	Signal Pole with Sidewalk Guy	○→
⊞	Inductive Loop Detector	⊞
⊞	Controller & Cabinet	⊞
⊞	Junction Box	⊞
---	2-in Underground Conduit	---
N/A	Right of Way	---
→	Directional Arrow	→
▬	Microwave Detection Zone	▬
▬	Construction Zone	N/A
(A)	Left Turn "ONLY" (R3-5L)	(A)
(B)	Right Turn "ONLY" (R3-5R)	(B)
(C)	No U-Turn/No Left Turn Sign (R3-18)	(C)
(D)	No U-Turn Sign (R3-4)	(D)

Signal Upgrade
Temporary Design 4
Construction Phase 3

DOCUMENT NOT CONSIDERED FINAL UNLESS ALL SIGNATURES COMPLETED

	NC 211 (Southport-Supply Road) at NC 906 East Ramp		SEAL
	Division 03 Brunswick Co. Southport PLAN DATE: June 2017 REVIEWED BY: A.D. Klinksiek PREPARED BY: A.H. Thornburg REVIEWED BY: N.R. Simmons	9/10/2021 SIGNATURE DATE SIG. INVENTORY NO. 03-0901T4	

HNTB HNTB NORTH CAROLINA, P.C.
343 E. Six Forks Road, Suite 200
Raleigh, North Carolina 27609
NC License No: C-1554
(919) 546-8997

