



STATE OF NORTH CAROLINA
DEPARTMENT OF TRANSPORTATION

ROY COOPER
GOVERNOR

J. ERIC BOYETTE
SECRETARY

November 18, 2021

Addendum No. 1

RE: Contract # C204123
WBS # 41582.3.1
FEDERAL-AID NO. STP-0211(021)
Brunswick County (R-5021)
NC-211 FROM SR-1500 (MIDWAY RD) TO NC-87

December 7, 2021 Letting

To Whom It May Concern:

Reference is made to the plans and proposal form furnished to you on this project.

The following revisions have been made to the Roadway plans.

Sheet No.	Revision
1 (TSH)	Plan sheets 5,6,34 shifted slightly to include the new RAB area on YAREV. Alignments RAB, YG, and YAREV added. Two new proposed traffic signals added at LREV/YAREV and at the left over on LREV right before the YREV bridge. Letting date revised.
1A	The following sheets added: 2B-11, 2C-19, 2C-20, 3D-23, Profile sheet 71, all row sheets have updated numbers (RW0-xx), 8 sheets added to Utilities by Others, XSC sheets added to account for the new alignments. STD. Drawings added: 422.03, 840.03, 850.01, and 850.11
2A-1 thru 2A-16	R9 and R10 in the pavement schedule added on all typical sheets.
2A-5	Typicals 9 and 10 removed from this sheet as YA has been replaced with YAREV.
2A-16	Typical 56 added to this sheet.
2A-17 (NEW)	Typical 57, 58, 59 added. They relate to all new alignments that have been added with the addition of the RAB and its legs.

Mailing Address:
NC DEPARTMENT OF TRANSPORTATION
CONTRACT STANDARDS AND DEVELOPMENT
1591 MAIL SERVICE CENTER
RALEIGH, NC 27699-1591

Telephone: (919) 707-6900
Fax: (919) 250-4127
Customer Service: 1-877-368-4968

Location:
1020 BIRCH RIDGE DR.
RALEIGH, NC 27610

Website: www.ncdot.gov

Sheet No.	Revision
2B-1	The intersection detail and directional crossover into the MDI Management, INC -L- STA 66+00.00. See plan sheets for more details (5 and 6).
2B-5	Bridge detail at intersection of L and YREV the third lane in the east bound direction has been striped out.
2B-7	Midway RD. / Middleton Blvd interchange overview sheet. (See Plan sheets 5 and 6)
2B-8	Y14E Begin station revised on overview sheet.
2B-10	Emergency vehicle access detail located on L has the following changes: 2 access removed on L and YA, the one on L shifted to a new location (STA 232+68.50) while the one on YA was removed since a RAB has been added in this location.
2B-11 (NEW)	Detail of roundabout, this sheet has been added with the addition of the RAB alignment.
2C-20 (NEW)	1'6" C&G to 2'9" C&G Transition Section Detail sheet added.
2D-1 thru 2D-3	Drainage Details updated.
3B-1	Guardrail updated on L between STA 63+14.11 to 78+92.16 on the RT.
3B-3	Summary of Earthwork updated at the following locations: L STA 61+50 to 78+00, YA removed, YAREV, YG, and RAB added to this sheet.
3B-4	Summary of Earthwork updated L STA 306+50 to L 311+50 on the LT side with the revision of -Y9A- changing from shoulder to curb and gutter.
3B-5	The following sheets changed with the changed mentioned above. Sheet 1, 2, 3 totals.
3B-6	The shoulder berm gutter summary updated in the following area L STA 61+81 to 71+39 on the RT.
3B-8	Summary of Hydraulic Rip Rap and DDE quantities updated: the DDE at station L STA 307+00 to L 311+50 removed as this is now a CG section. New pipes added in the following location due to the grass median becoming turn lanes with a monolithic island STA 62+25 to 74+70.
3B-9	Summary of Hydraulic Rip Rap and DDE quantities updated by adding the new alignments YAREV, YG, RAB, YASLIP.
3D-1 thru 3D-22	Sheets adjusted for the new design and changes by drainage.
3D-23 (NEW)	Sheet added for the new design and changes by drainage.
3P-1 thru 3P-2	Updated Parcel Index Sheets.

Sheet No.	Revision
5	Turn lane to YAREV shifted to start at ~61+50 RT. PUE and ROW updated with the addition of the new alignment of YAREV and removal of YA. Leftover and driveway on the RT side of L at ~67+25 removed. Turn lanes and a median added at ~L 70+00 to replace the grass median that was there prior, this continues onto sheet 6. Third through lane in the eastbound direction striped out. Guardrail along the RT side of L in this area updated with the changes and addition of YAREV. Drainage along L updated based on the changes mentioned. YAREV replaces YA. YAREV is a 4 lane divided curb and gutter typical and replaced YA a 2 lane divided shoulder typical. A Signal has been added at the intersection of L and YAREV.
6	The continuation of turn lanes and islands in replacement of grass median, this ends at a new left over that was added to allow passenger cars to make U-turns. This station is ~77+50. The third through lane eastbound and striped out.
22-23	The turn lane along L for Y9A Sta (306+00- 312+00) has been changed from shoulder to curb and gutter removing the need to have DDE behind this section along L. ROW and PUE adjusted for these new changes. Drainage updated to show these adjustments.
26	ROW revision on parcel 97Y due to a pump station being in the ROW.
34	RAB, YG, YAREV alignments and design added to this sheet. YA removed and the curve data updated to reflect the new additions of the alignment.
34A	Transition from 1'6" to 2'9" added to tie back to existing on YREV STA 52+25.00 Northbound.
36	Y14E alignment and profile adjusted based on the development profiles, new existing ground.
37A	ROW along T14H shortened to only go past the access breaks for parcel 186 and 191.
57	Profile sheet adjusted for revisions on Sheet 5 and 34.
58	Profile sheet adjusted for revisions on Sheet 34.
66	Profile sheet adjusted for revisions on Sheet 36.
71	Profile sheet adjusted for revisions on Sheet 34.

Please void the above listed Sheets in your plans and staple the revised Sheets thereto. Staple New Sheets in the appropriate place in your Plans.

The following revisions have been made to the Right of Way Plans.

Sheet No.	Revision
RW01 thru RW40 (NEW)	Right of Way sheets were added to plan set.

Staple New Sheets in the appropriate place in your Plans.

The following revisions have been made to the Traffic Control Plans.

Sheet No.	Revision
TMP-1A	Fixed RSD titles to match RSD. Added RSD 1205.14 Pavement Markings – Roundabouts to RSD list.
TMP-1A	Updated temporary pavement marking legend to include the new RAB area pavement markings.
TMP-2E	Changed -YA- to -YAREV- and -YG-
TMP-3	Changed Delay of Entry to all be 548 days to match UBO Special Provisions per Division’s request. Changed -YA- to -YAREV- and -YG- in Delay of Entry note. Removed “to be relocated by others” in Delay of Entry note per UBO Special Provisions, for clarification sake.
TMP-3 thru TMP-3C	Rewrote/reordered phasing sheets based on Delay of Entry. Phase IA and IB steps are written with Phase I steps. New Phase I Steps 2 thru 6 are not affected by Delay of Entry. Majority of new Phase I Steps 7 thru 12 need to be completed before Phase I Step 13. Majority of Phase II work cannot be start until Phase I Step 13 is completed.
TMP-3	Revised -YA- to -YAREV- and -YG-.
TMP-3	Removed temporary pavement work -L- STA 75+00 to 76+00 (TMP-12) due to revisions in pavement extents made for the U-turn lane in median.
TMP-3	Added construction of -L- STA 66+75+/- to STA 69+18+/- due to revisions in pavement extents made for the U-turn lane in median.
TMP-3A	Extended pavement marking edge line on -L- from STA 70+25+/- to STA 74+98+/-for continuity with Phase II. (See TMP-71 for details)
TMP-3A	Inserted paragraph and removed temporary pavement -L- STA 73+59+/- to 75+00+/- work due to revisions in pavement extents made for the U-turn lane in median. Added temporary pavement from -L- STA 66+50+/- to STA 66+75+/-.
TMP-3B	Updated -YA- to -YAREV-.
TMP-3B	Added clarification for hanging girders time restrictions. Fixed detour reference to TMP-2E for hanging girders.
TMP-3C	Updated ICT for Long Beach Road bridge to be done between September 16 OF ANY YEAR THE CONTRACTOR ELECTS TO BEGIN WORK AFTER THE DELAY OF AVAILABILITY and August 15 OF THE FOLLOWING YEAR THAT THE CONTRACTOR ELECTS TO BEGIN WORK.
TMP-3C	Updated -YA- to -YAREV-. Added -RAB- and -YG- to Phase III Step 1.2.

Sheet No.	Revision
TMP-3C	Phase III Step 3.1 updated -L- median work extents to accommodate U-turn lane in median.
TMP-3C	Updated Phase III Step 3.2 for clarification.
TMP-3C	Phase III Step 3.3 included removal of temporary pavement -L- STA 66+51+/- to STA 69+18+/- on TMP-129 due to revisions in pavement extents made for the U-turn lane in median. Temporary pavement was needed to accommodate Phase II traffic pattern.
TMP-4	Updated -YA- to -YAREV- and -YG-. Updated temporary pavement quantity call outs.
TMP-11 thru TMP-12	Revised note to construct temporary pavement AND TEMPORARY DITCH IN EXISTING RIGHT OF WAY
TMP-12	Updated -YA- to -YAREV-. Removed temporary pavement work in -L- STA 75+00 to 76+00 due to addition of U-turn lane in median, and shifted barricades as well.
TMP-31	Revised Step numbers
TMP-34	Updated -YA- to -YAREV-, -RAB-, and -YG-.
TMP-38 thru TMP-42	Revised Step numbers in title.
TMP-44	Added temporary pavement due to revisions in pavement extents made for the U-turn lane in median near -YREV-.
TMP-45	Updated -YA- to -YAREV-. Fixed EOP where temporary pavement used to be (See TMP-12), barricades and drums positions. -YREV- NB stop bar was revised by Signals.
TMP-55 thru TMP- 56	Right turn lane at -Y9A- changed from shoulder to curb and gutter.
TMP-70	Added temporary pavement due to revisions in pavement extents made for the U-turn lane in median near -YREV-.
TMP-71	Added note "close right turn lane" for clarification. Removed temporary pavement due to revisions in pavement extents made for the U-turn lane in median near -YREV-. Updated -YA- to -YAREV-. Fixed barricade and drum locations. -YREV- NB stop bar was revised by Signals.
TMP-71 thru TMP-78	Revised Step numbers in title.
TMP-79	Updated -YA- to -YAREV- and -YG-.
TMP-82	Added note to add barricades at -Y14E- when -Y14A- is closed.
TMP-85	Updated B-B' to show wider -L- (RT) and extended culvert.
TMP-87	Show revised -L- and extended culvert. Show revised pavement extents in median made for the U-turn lane near -YREV-. Show temporary pavement (installed in Phase 1A and 1B) EOP.
TMP-88	Show revised pavement extents in median made for the U-turn lane near -YREV-. Updated -YA- to -YAREV-. Fixed barricade and drum locations.
TMP-97 thru TMP-98	Right turn lane at -Y9A- changed from shoulder to curb and gutter.

Sheet No.	Revision
TMP-110	Updated -YA- to -YAREV- and -YG-.
TMP-116 thru TMP-121	Revised Step numbers in title.
TMP-116	Updated -YA- to -YAREV-. Show revised pavement extents in median made for the U-turn lane near -YREV-. Fixed barricade and drum locations. Removed temporary pavement due to revisions in pavement extents made for the U-turn lane in median near -YREV-.
TMP-117	Updated -YA- to -YAREV- and -YG-. Added callout for -YREVTCP1- for clarification.
TMP-119	Updated -YA- to -YAREV-. Show revised pavement extents in median made for the U-turn lane near -YREV-. Fixed barricade and drum locations. Removed temporary pavement due to revisions in pavement extents made for the U-turn lane in median near -YREV-.
TMP-120	Updated -YA- to -YAREV- and -YG-.
TMP-122	Updated -YA- to -YAREV- and -YG-. Show U-turn lane on -L- between -YAREV- and -YREV-. Added note regarding Green T intersection construction and signalization for clarification.
TMP-127	Updated B-B' to show wider -L- (RT) and extended culvert.
TMP-129	Revised pavement marking for revised right turn lane on -L- to -YAREV-. Removed temporary pavement due to revisions in pavement extents made for the U-turn lane in median near -YREV-. Fixed barricade and drum locations. Revised pavement marking for left turn on -L- due to change in driveway/-YAREV-.
TMP-130	Revised pavement marking for left turn on -L- due to change in driveway/-YAREV- and U-turn lane on -L- between -YAREV- and -YREV-. Fixed barricade and drum locations.
TMP-131	Removed stop sign due to temp signal.
TMP-142 thru TMP-143	Right turn lane at -Y9A- changed from shoulder to curb and gutter.
TMP-155	Updated -YA- to -YAREV- and -YG-. Added "install signal pole" for clarification. Added note "left lane is closed with drums" for clarification. Fixed barricade and drum locations.
TMP-161	Updated -YA- to -YAREV-. Revised pavement marking for left turn on -L- due to change in driveway/-YAREV-, U-turn lane on -L- between -YAREV- and -YREV-, and merge lane on -L- EB. Fix pavement marking callouts. Added "install applicable permanent signs" and "see PMP for roundabout pavement markings" note.
TMP-165	Updated -YA- to -YAREV- and -YG-. Updated pavement marking call outs and stations per PMP. Added "install applicable permanent signs" and "see PMP for roundabout pavement markings" note.

Please void the above listed Sheets in your plans and staple the revised Sheets thereto.

The following revisions have been made to the Pavement Marking Plans.

Sheet No.	Revision
PMP-1A	Updated to show additional marking symbols and line types to the Pavement Marking Schedule.
PMP-1B (NEW)	Added to show the addition of sheet PMP-4A on the key sheet.
PMP-4	Updated to show revised pavement markings along -L- and along the new Midway revision alignment -YAREV-.
PMP-4A (NEW)	Added to show the new roundabout along -YAREV-.
PMP-5	Updated to show revised pavement markings along -L-.
PMP-6	Updated to show revised pavement markings along -L-.
PMP-7	Updated to add markings for the westbound turn bay between stations 94+00 to 101+00.
PMP-19	Updated to add markings for the westbound turn bay into -Y9A-.
PMP-20	Updated to add markings for the westbound turn bay into -Y9A-.
PMP-30	Updated to show revised pavement markings along the new Midway revision alignment -YAREV-.

Please void the above listed Sheets in your plans and staple the revised Sheets thereto. Staple New Sheets in the appropriate place in your Plans.

The following revisions have been made to the Erosion Control Plans.

Sheet No.	Revision
EC-5	Revised L from STA 61+50 to 78+00 RT (Added a turn lane so ditch on right of roadway shifted 12 ft. out. Ditch profile stayed the same). Added CB 0517 on L around sta. 72+50 RT. YA deleted and added YAREV (new alignment). YAREV tie in with YREV at the same place as YA.
EC-6	Revised L from STA 61+50 to 78+00 RT (Added a turn lane so ditch on right of roadway shifted 12 ft. out. Ditch profile stayed the same).
EC-22	3' lateral base ditch removed from L STA 306+50 to 312+00 LT and replaced with close drainage system. Added CB 2212, 2213, 2214, 2215 and 2315
EC-23	3' lateral base ditch removed from L STA 306+50 to 312+00 LT and replaced with close drainage system
EC-34	YA deleted and added YAREV (new alignment). YAREV tie in with YREV at the same place as YA. Added RAB along YAREV and added YG off of YAREV.
EC-36	Y14E redesigned due to new FS showing new development.

Sheet No.	Revision
EC-42	Revised L from STA 61+50 to 78+00 RT (Added a turn lane so ditch on right of roadway shifted 12 ft. out. Ditch profile stayed the same). Added CB 0517 on L around STA 72+50 RT. YA deleted and added YAREV (new alignment). YAREV tie in with YREV at the same place as YA.
EC-43	Revised L from STA 61+50 to 78+00 RT (Added a turn lane so ditch on right of roadway shifted 12 ft. out. Ditch profile stayed the same).
EC-59	3' lateral base ditch removed from L STA 306+50 to 312+00 LT and replaced with close drainage system. Added CB 2212, 2213, 2214, 2215 and 2315
EC-60	3' lateral base ditch removed from L STA 306+50 to 312+00 LT and replaced with close drainage system.
EC-72	YA deleted and added YAREV (new alignment). YAREV tie in with YREV at the same place as YA. Added RAB along YAREV and added YG off of YAREV.
EC-75	Y14E redesigned due to new FS showing new development.

Please void the above listed Sheets in your plans and staple the revised Sheets thereto.

The following revisions have been made to the Signing Plans.

Sheet No.	Revision
SIGN-1	Updated to reflect new signing quantity values.
SIGN-1A	Updated to show the revised alignment of sheets SIGN-14 and SIGN-15 on the key sheet.
SIGN-3H	Updated to show new signs 409 and 443.
SIGN-3I	Updated to show revised E-sign quantities and revised signs 405, 406, and 409.
SIGN-3J	Updated to show new signs 439-444 and revised E-sign quantities.
SIGN-3K	Updated to show new signs 567 and 568.
SIGN-3L	Updated to show new signs 569-576.
SIGN-3M (NEW)	Added to show new "TRUCKS" plaque design.
SIGN-13	Updated to change Sign 405 to an OM3-L object marker.
SIGN-14	Updated to show revised signing along -L- and along the new Midway revision alignment -YAREV-.
SIGN-15	Updated to show revised signing along the new Midway revision alignment -YAREV-, change Sign 409 to an OM3-C object marker, and change Sign 405 to an OM3-L object marker.
SIGN-16	Updated to show the addition of Sign 405, change Sign 409 to an OM3-C object marker, and to show revised westbound turn bay markings (stations 94+00 to 101+00).
SIGN-18	Updated to change Sign 405 to an OM3-L object marker.
SIGN-20	Updated to change Sign 405 to an OM3-L object marker.

Sheet No.	Revision
SIGN-21	Updated to change Sign 409 to an OM3-C object marker.
SIGN-22	Updated to change Sign 409 to an OM3-C object marker.
SIGN-23	Updated to change Sign 409 to an OM3-C object marker.
SIGN-24	Updated to change Sign 405 to an OM3-L object marker, change Sign 409 to an OM3-C object marker, and to show revised turn bay in the westbound direction into -Y9A-.
SIGN-25	Updated to change Sign 405 to an OM3-L object marker and Sign 409 to an OM3-C object marker.
SIGN-26	Updated to change Sign 405 to an OM3-L object marker and move Signs 403/404 near -Y14A- station 47+50 to a location above the proposed retaining wall.
SIGN-27	Updated to change Sign 405 to an OM3-L object marker.
SIGN-28	Updated to change Sign 405 to an OM3-L object marker.
SIGN-29	Updated to change Sign 405 to an OM3-L object marker.
SIGN-30	Updated to change Sign 405 to an OM3-L object marker and Sign 409 to an OM3-C object marker.
SIGN-32	Updated to change Sign 405 to an OM3-L object marker.

Please void the above listed Sheets in your plans and staple the revised Sheets thereto. Staple New Sheets in the appropriate place in your Plans.

The following revisions have been made to the Signal ITS Plans.

Sheet No.	Revision
SIG. 1.0	This sheet has been updated to add the new signals, 03-1177 and 03-1178, and revised sheet numbers.
SIG. 14.0	The phasing has been updated to reflect the most recent update to the NCDOT Signal Design Manual and the phasing used at the new signal 03-1177 (Sig. 46.0).
SIG. 14.1 thru SIG. 14.2	The wiring has been updated to match the phasing update.
SIG. 14.3	This sheet has been added to account for updated phasing.
SIG. 14.4 thru SIG. 14.5	The wiring has been updated to match the phasing update.
SIG. 14.6	Sheet number has been updated.
SIG. 46.0 thru SIG. 46.6 (NEW)	These sheets have been added.
SIG. 47.0 thru SIG. 47.3 (NEW)	These sheets have been added.
SIG. 48.0	Sheet number has been updated.
SIG. 49.0	Sheet number has been updated.
SCP. 2	Updated to show plan sheet 12A.
SCP. 3	Updated to show additional signals 03-1177 and 03-1178.
SCP. 12	Updated to show new fiber route from signal 03-1178 to signal 03-1177. Removed fiber route across NC 211. New fiber route to CCTV-1.

Sheet No.	Revision
SCP. 12A (NEW)	Added sheet to show new fiber route from signal 03-1178 to signal 03-1177 and from signal 03-1177 to 03-1123.
SCP. 14	Updated to show new fiber route from signal 03-1178 to signal 03-1123. Removed fiber route running along NC 906.
SCP. 43	Updated to show fiber route to splice at 03-1123.
SCP. 43A (NEW)	Added to show new fiber splice at 03-1177.
SCP. 43B (NEW)	Added to show new fiber splice at 03-1178.
SCP. 44	Updated to show fiber route to splice at CCTV-1.
SCP. 45	Updated to show fiber route to splice at 03-1122.
SCP. 46	Updated to show fiber route to splice at DMS-1/DMS-2.
SCP. 49	Updated to show fiber route to splice at CCTV-3.
SCP. 59	Updated to show color DMS.
SCP. 60	Updated to show color DMS.

Please void the above listed Sheets in your plans and staple the revised Sheets thereto. Staple New Sheets in the appropriate place in your Plans.

The following revisions have been made to the Utility Construction Plans.

Sheet No.	Revision
UC-1	Let Date revised.
UC-4 thru UC-6, UC-56	Relocated and extended 16" Water Main from existing easement to new PUE on Plan Sheets.
UC-4 thru UC-23, UC-25 thru UC-29, UC-32 thru UC-33, UC-35 thru UC-36	Removed note below Pay Item Box for Abandon Utility Pipe on Plan Sheets.
UC-22, UC-50 thru UC-51, UC-58	Relocated the 24" water main around the newly relocated drainage structure STR-2205 at approximate STA 306+00. Added four 24" x 45° elbows and increased the length of 24" restrained joint pipe around the drainage structure.
UC-60	Upsized 16" force main sewer to 24" force main sewer and increased the length by 20 linear feet. Added 48" encasement pipe being installed by open cut.
UC-61	Upsized 16" force main to 24" force main sewer.
UC-62	Upsized 16" force main sewer to 24" force main sewer. Removed note "reconnect force main" on parcel 43. Revised sewer alignment -S2-L- to extend to Executive Drive. Added 31 LF of utility manhole wall to manhole #3 -S2-L-. Increased abandon 8" utility pipe gravity sewer from 150lf to 363lf. Material change for 8" gravity sewer from DI PC350 to PVC DR18 for sewer alignments -S2-L- and -S2A-L-.
UC-63	Upsized 16" force main sewer to 24" force main sewer. Shifted air release valve and valve closer to access break.

Sheet No.	Revision
UC-64	Upsized 16" force main sewer to 24" force main sewer. Shifted air release valve and valve closer to access break.
UC-65	Upsized 16" force main sewer to 24" force main sewer. Proposed 24" sewer line -S1-L-, added break in horizontal directional drill at station 75+00.
UC-66	Upsized 16" force main sewer to 24" force main sewer.
UC-67	Upsized 16" force main sewer to 24" force main sewer. Removed duplicate air release valve near -L- Sta. 309+00. Revised linear footage for abandon 4" utility pipe from 85 LF to 75LF. Added additional reconnect force main and 42 LF of 48" encasement pipe being installed by open cut.
UC-68	Upsized 16" force main sewer to 24" force main sewer. Material change for 8" gravity sewer at jurisdictional stream crossing for sewer alignment -S3-L- from PVC pipe to ductile iron pipe. Revised length on plan sheet to match profile sheet at jurisdictional stream crossing.
UC-69	Upsized 16" force main sewer to 24" force main sewer. Relocated proposed 16" force main sewer from under bridge to crossing under -y14A- via bore and jack to reduce interruption to traffic during construction.
UC-70	Upsized 16" force main sewer to 24" force main sewer. Increased abandon 16" utility pipe force main sewer by 739 LF.
UC-71	Upsized 16" force main sewer to 24" force main sewer. Increased proposed sewer line to be relocated increased by 828 LF. Increased abandon 16" utility pipe force main sewer by 823 LF.
UC-72	Upsized 16" force main sewer to 24" force main sewer. Removed doghouse manhole for 8" gravity sewer alignment -S8-L- and replaced with cut-in manhole at manhole #1 Sta. 10+00. Added flow meter vault near River Mist pump station owner by Brunswick County.
UC-73	Relocated flow meter vault from sheet UC-73 to UC-72. Force main sewer -S7-L-, lowered the crossing depth below Dutchmans creek from 5.3' to 10' and increased length of trenchless install by 33 LF.
UC-79 thru UC-82	Upsized 16" force main sewer to 24" force main sewer.
UC-82A (NEW)	Upsized 16" force main sewer to 24" force main sewer.
UC-82B (NEW)	Upsized 16" force main sewer to 24" force main sewer.
UC-83	Removed 16" force main sewer from profile due to upsizing to 24" force main sewer. Extended sewer profile -S2-L- due to additional length. Material change for 8" gravity sewer from DI PC350 to PVC DR18 for sewer alignments -S2-L- and -S2A-L-.
UC-84	Gravity sewer main -S3-L-, material change at jurisdictional stream crossing from PVC pipe to ductile iron pipe.

Sheet No.	Revision
UC-85	Removed 16" force main sewer alignments -S5-L and -S6-L- from profile.
UC-86	Force main sewer -S7-L-, lowered the crossing depth below Dutchmans creek from 5.3' to 10', increased length of trenchless install by 33 LF.

Please void the above listed Sheets in your plans and staple the revised Sheets thereto. Staple New Sheets in the appropriate place in your Plans.

The following revisions have been made to the Cross Sections.

Sheet No.	Revision
X-0	Added new Ylines (YAREV, RAB, YG) and removed YA.
X-1A	Earthwork Updated for LREV LT (Sta 66+50 to 78+00).
X-1D thru X-IE	Earthwork Updated for LREV RT (Sta 61+50 to 78+00).
X-1i (NEW)	Removed Earthwork for YA that was replaced with YAREV on X-1L.
X-1L	Earthwork Updated for YAREV, YG, RAB (All Stations)
X-9 thru X-18	LREV Updates for new turn lanes for YAREV interchange (Sta 61+50 to 78+00)
X-107 thru X-110	LREV Wedging removed since Y7 ALN to be closed for WZTC. Depiction of pavement structure revised.
X-134 thru X-136	LREV Updates for revising LT shoulder to curb and gutter for Y9A turn lane
X-224 thru X-230	YA replaced with YAREV for roundabout updates/addition
X-339 thru X-341	Updated Y14E profile to new updated survey
X-398 thru X-405 (NEW)	Added new alignments YG and RAB for roundabout updates.

Please void the above listed Sheets in your plans and staple the revised Sheets thereto. Staple New Sheets in the appropriate place in your Plans.

The following revisions have been made to the Structure (Culverts) plans.

Sheet No.	Revision
C1-1, C1-2, C1-4	Revised to reflect lengthening of the culvert.

Please void the above listed Sheets in your plans and staple the revised Sheets thereto.

The following revisions have been made to the proposal.

Page No.	Revision
Proposal Cover	Note added that reads "Includes Addendum No. 1 Dated 11-18-2021". Letting date revised to December 7, 2021.

Page No.	Revision
Table of Contents	Revised INTERMEDIATE CONTRACT TIME NUMBER 7 AND LIQUIDATED DAMAGES provision page number.
G-1	Project Special Provision entitled CONTRACT TIME AND LIQUIDATED DAMAGES was revised.
G-1	Project Special Provision entitled INTERMEDIATE CONTRACT TIME NUMBER 1 AND LIQUIDATED DAMAGES was revised.
G-2 thru G-3	Project Special Provision entitled INTERMEDIATE CONTRACT TIME NUMBER 2 AND LIQUIDATED DAMAGES was revised.
G-3 thru G-4	Project Special Provision entitled INTERMEDIATE CONTRACT TIME NUMBER 3 AND LIQUIDATED DAMAGES was revised.
G-4	Project Special Provision entitled INTERMEDIATE CONTRACT TIME NUMBER 4 AND LIQUIDATED DAMAGES was revised.
G-4	Project Special Provision entitled INTERMEDIATE CONTRACT TIME NUMBER 5 AND LIQUIDATED DAMAGES was revised.
G-4	Project Special Provision entitled INTERMEDIATE CONTRACT TIME NUMBER 6 AND LIQUIDATED DAMAGES was revised.
G-4 thru G-5	Project Special Provision entitled INTERMEDIATE CONTRACT TIME NUMBER 7 AND LIQUIDATED DAMAGES was revised.
G-5	Project Special Provision entitled INTERMEDIATE CONTRACT TIME NUMBER 8 AND LIQUIDATED DAMAGES was revised.
G-5	Project Special Provision entitled INTERMEDIATE CONTRACT TIME NUMBER 9 AND LIQUIDATED DAMAGES was revised.
G-5 thru G-6	Project Special Provision entitled INTERMEDIATE CONTRACT TIME NUMBER 10 AND LIQUIDATED DAMAGES was revised.
G-9	Project Special Provision entitled SCHEDULE OF ESTIMATED COMPLETION PROGRESS was revised.
R-58 (NEW)	Project Special Provision entitled 7" JOINTED CONCRETE TRUCK APRON was added.
UbO-1, UbO-2 and New Page UbO-3	The Unit Project Special Provision entitled UTILITY BY OTHERS was revised.
TS-101, TS-119, TS-122, TS-125	The Unit Project Special Provision entitled SIGNALS AND INTELLIGENT TRANSPORTATION SYSTEMS was revised. Reference to DMS Type 1A revised to DMS Type 1C.

Page No.	Revision
P-2 thru P-9	PERMITS REVISED. USACE 404 permit was reissued to address the design and impact changes.
P-78A, P-78B and P-78C (NEW)	PERMITS REVISED. 401-modification letter added. DWR modified the existing 401 to only address the changes at Sites 2 & 3.
P-106, P-110 thru P-111, P-113 thru P-114, P-187 thru P-188, P-199 thru P-200	PERMITS REVISED. Updated permit drawings for new design impacts.

Please void the above listed existing Pages in your proposal and staple the revised Pages thereto.

Staple New Page R-58 after R-57 in your proposal. Staple New Page UbO-3 after revised UbO-2 in your proposal. Staple New Pages P-78A, P-78B, and P-78C after P-78 in your proposal.

Due to extensive pay item quantity changes, Item Sheets have been replaced in their entirety.

The Contractor's bid must include these pay item revisions.

The electronic bidding file has been updated to reflect these revisions. Please download the Addendum File and follow the instructions for applying the addendum. Bid Express will not accept your bid unless the addendum has been applied.

The contract will be prepared accordingly.

Sincerely,

DocuSigned by:

Ronald E. Davenport, Jr.

F81B6038A47A442...

Ronald E. Davenport, Jr., PE
State Contract Officer

RED/cms
Attachments

cc: Mr. Lamar Sylvester, PE
D. Chad Kimes, PE
Mr. Boyd Tharrington, PE
Mr. Jon Weathersbee, PE
Mr. Ken Kennedy, PE
Project File (2)

Mr. Forrest Dungan, PE
Ms. Jaci Kincaid
Ms. Lori Strickland
Mr. Mike Gwyn
Ms. Penny Higgins
Mr. Kyle Kempf

STATE OF NORTH CAROLINA
DEPARTMENT OF TRANSPORTATION
RALEIGH, N.C.

PROPOSAL

INCLUDES ADDENDUM No. 1 DATED 11-18-2021

DATE AND TIME OF BID OPENING: **DECEMBER 7, 2021 AT 2:00 PM**

CONTRACT ID C204123

WBS 41582.3.1

FEDERAL-AID NO. STP-0211(021)

COUNTY BRUNSWICK

T.I.P. NO. R-5021

MILES 7.244

ROUTE NO. NC 211

LOCATION NC-211 FROM SR-1500 (MIDWAY RD) TO NC-87.

TYPE OF WORK GRADING, DRAINAGE, PAVING, SIGNALS, AND STRUCTURES.

NOTICE:

ALL BIDDERS SHALL COMPLY WITH ALL APPLICABLE LAWS REGULATING THE PRACTICE OF GENERAL CONTRACTING AS CONTAINED IN CHAPTER 87 OF THE GENERAL STATUTES OF NORTH CAROLINA WHICH REQUIRES THE BIDDER TO BE LICENSED BY THE N.C. LICENSING BOARD FOR CONTRACTORS WHEN BIDDING ON ANY NON-FEDERAL AID PROJECT WHERE THE BID IS \$30,000 OR MORE, EXCEPT FOR CERTAIN SPECIALTY WORK AS DETERMINED BY THE LICENSING BOARD. BIDDERS SHALL ALSO COMPLY WITH ALL OTHER APPLICABLE LAWS REGULATING THE PRACTICES OF ELECTRICAL, PLUMBING, HEATING AND AIR CONDITIONING AND REFRIGERATION CONTRACTING AS CONTAINED IN CHAPTER 87 OF THE GENERAL STATUTES OF NORTH CAROLINA. NOTWITHSTANDING THESE LIMITATIONS ON BIDDING, THE BIDDER WHO IS AWARDED ANY FEDERAL - AID FUNDED PROJECT SHALL COMPLY WITH CHAPTER 87 OF THE GENERAL STATUTES OF NORTH CAROLINA FOR LICENSING REQUIREMENTS WITHIN 60 CALENDAR DAYS OF BID OPENING.

BIDS WILL BE RECEIVED AS SHOWN BELOW:

THIS IS A ROADWAY & STRUCTURE PROPOSAL

5% BID BOND OR BID DEPOSIT REQUIRED

TABLE OF CONTENTS

**COVER SHEET
PROPOSAL SHEET**

PROJECT SPECIAL PROVISIONS

CONTRACT TIME AND LIQUIDATED DAMAGES: G-1
 INTERMEDIATE CONTRACT TIME NUMBER 1 AND LIQUIDATED DAMAGES: G-1
 INTERMEDIATE CONTRACT TIME NUMBER 2 AND LIQUIDATED DAMAGES: G-2
 INTERMEDIATE CONTRACT TIME NUMBER 3 AND LIQUIDATED DAMAGES: G-3
 INTERMEDIATE CONTRACT TIME NUMBER 4 AND LIQUIDATED DAMAGES: G-4
 INTERMEDIATE CONTRACT TIME NUMBER 5 AND LIQUIDATED DAMAGES: G-4
 INTERMEDIATE CONTRACT TIME NUMBER 6 AND LIQUIDATED DAMAGES: G-4
 INTERMEDIATE CONTRACT TIME NUMBER 7 AND LIQUIDATED DAMAGES: G-4
 INTERMEDIATE CONTRACT TIME NUMBER 8 AND LIQUIDATED DAMAGES: G-5
 INTERMEDIATE CONTRACT TIME NUMBER 9 AND LIQUIDATED DAMAGES: G-5
 INTERMEDIATE CONTRACT TIME NUMBER 10 AND LIQUIDATED DAMAGES: G-5
 PERMANENT VEGETATION ESTABLISHMENT:..... G-6
 CONSTRUCTION MORATORIUM (In-Water Work):..... G-6
 CONSTRUCTION MORATORIUM (Bats): G-6
 DELAY IN RIGHT OF ENTRY: G-7
 MAJOR CONTRACT ITEMS: G-7
 SPECIALTY ITEMS:..... G-7
 FUEL PRICE ADJUSTMENT:..... G-7
 PAYOUT SCHEDULE: G-8
 SCHEDULE OF ESTIMATED COMPLETION PROGRESS:..... G-9
 DISADVANTAGED BUSINESS ENTERPRISE: G-9
 CERTIFICATION FOR FEDERAL-AID CONTRACTS: G-23
 CONTRACTOR'S LICENSE REQUIREMENTS: G-23
 RESTRICTIONS ON ITS EQUIPMENT AND SERVICES:..... G-24
 USE OF UNMANNED AIRCRAFT SYSTEM (UAS): G-24
 EQUIPMENT IDLING GUIDELINES:..... G-24
 U.S. DEPARTMENT OF TRANSPORTATION HOTLINE: G-25
 CARGO PREFERENCE ACT: G-25
 SUBSURFACE INFORMATION:..... G-26
 PORTABLE CONCRETE BARRIER - (Partial Payments for Materials):..... G-26
 MAINTENANCE OF THE PROJECT: G-26
 ELECTRONIC BIDDING:..... G-27
 BID DOCUMENTATION: G-27
 TWELVE MONTH GUARANTEE: G-30
 EROSION AND SEDIMENT CONTROL/STORMWATER CERTIFICATION:..... G-31
 PROCEDURE FOR MONITORING BORROW PIT DISCHARGE:..... G-36
 NOTE TO CONTRACTOR (Residential Fences):..... G-37
 NOTE TO CONTRACTOR (Salvage Metal Signal Poles):..... G-37

 ROADWAY R-1

STANDARD SPECIAL PROVISIONS

AVAILABILITY FUNDS – TERMINATION OF CONTRACTS..... SSP-1
 NCDOT GENERAL SEED SPECIFICATION FOR SEED QUALITY SSP-2
 ERRATA..... SSP-5
 PLANT AND PEST QUARANTINES SSP-6
 TITLE VI AND NONDISCRIMINATION SSP-7
 MINORITY AND FEMALE EMPLOYMENT REQUIREMENTS SSP-15
 REQUIRED CONTRACT PROVISIONS FEDERAL-AID CONST. CONTRACTS SSP-18
 ON-THE-JOB TRAINING SSP-27
 MINIMUM WAGES SSP-30

UNIT PROJECT SPECIAL PROVISIONS

GEOTECHNICAL.....GT-0.1
 GEOENVIRONMENTAL..... GV-1
 SIGNINGSN-1
 PAVEMENT MARKINGS..... PM-1
 TRAFFIC CONTROL TC-1
 UTILITY CONSTRUCTION UC-1
 UTILITY CONSTRUCTIONUC-1A
 UTILITY CONSTRUCTION UC-P1
 UTILITY BY OTHERS.....UBO-1
 EROSION CONTROLEC-1
 TRAFFIC SIGNALS TS-1
 STRUCTURE / CULVERTS..... ST-1
 STRUCTURE..... ST-A1

PERMITSP-1

PROPOSAL ITEM SHEET

ITEM SHEET(S) (TAN SHEETS)

PROJECT SPECIAL PROVISIONS**GENERAL****CONTRACT TIME AND LIQUIDATED DAMAGES:**

(8-15-00) (Rev. 12-18-07)

108

SP1 G07 A

The date of availability for this contract is **January 24, 2022, except from -L- Sta. 47+50 (+/-) RT to -L- Sta. 78+00 (+/-) RT and from -L- Sta. 227+00 (+/-) to the end of the project is July 26, 2023**, except that work in jurisdictional waters and wetlands shall not begin until a meeting between the DOT, Regulatory Agencies, and the Contractor is held as stipulated in the permits contained elsewhere in this proposal. This delay in availability has been considered in determining the contract time for this project.

The completion date for this contract is **March 30, 2027**.

Except where otherwise provided by the contract, observation periods required by the contract will not be a part of the work to be completed by the completion date and/or intermediate contract times stated in the contract. The acceptable completion of the observation periods that extend beyond the final completion date shall be a part of the work covered by the performance and payment bonds.

The liquidated damages for this contract are **Two Hundred Dollars (\$ 200.00)** per calendar day. These liquidated damages will not be cumulative with any liquidated damages which may become chargeable under Intermediate Contract Time Number 1.

INTERMEDIATE CONTRACT TIME NUMBER 1 AND LIQUIDATED DAMAGES:

(7-1-95) (Rev. 2-21-12)

108

SP1 G13 A

Except for that work required under the Project Special Provisions entitled *Planting, Reforestation* and/or *Permanent Vegetation Establishment*, included elsewhere in this proposal, the Contractor will be required to complete all work included in this contract and shall place and maintain traffic on same.

The date of availability for this intermediate contract time is **January 24, 2022, except from -L- Sta. 47+50 (+/-) RT to -L- Sta. 78+00 (+/-) RT and from -L- Sta. 227+00 (+/-) to the end of the project is July 26, 2023**.

The completion date for this intermediate contract time is **October 1, 2026**.

The liquidated damages for this intermediate contract time are **Seven Thousand Dollars (\$ 7,000.00)** per calendar day.

Upon apparent completion of all the work required to be completed by this intermediate date, a final inspection will be held in accordance with Article 105-17 and upon acceptance, the Department will assume responsibility for the maintenance of all work except *Planting, Reforestation* and/or *Permanent Vegetation Establishment*. The Contractor will be responsible for and shall make corrections of all damages to the completed roadway caused by his planting operations, whether occurring prior to or after placing traffic through the project.

INTERMEDIATE CONTRACT TIME NUMBER 2 AND LIQUIDATED DAMAGES:

(2-20-07)

108

SP1 G14 A

The Contractor shall complete the required work of installing, maintaining, and removing the traffic control devices for lane closures and restoring traffic to the existing traffic pattern. The Contractor shall not close or narrow a lane of traffic on **NC 211 (-L-/LREV-), NC 906 (-YREV-), NC 133 (-Y14A-), SR 1969 (-Y14C-/Y14D-), Doshier Cut Off (-Y19REV-), and/or NC 87 (-Y22-)** during the following time restrictions:

DAY AND TIME RESTRICTIONS

Peak Season – from two (2) weeks prior to Easter thru September 15:

Monday thru Thursday

6:00 AM to 7:00 PM

&

6:00 AM Friday thru 7:00 PM Sunday

Off Season – from September 16 thru two (2) weeks prior to Easter

Monday thru Sunday

6:00 AM to 7:00 PM

In addition, the Contractor shall not close or narrow a lane of traffic on **NC 211 (-L-/LREV-), NC 906 (-YREV-), NC 133 (-Y14A-), SR 1969 (-Y14C-/Y14D-), Doshier Cut Off (-Y19REV-), and/or NC 87 (-Y22-)**, detain and/or alter the traffic flow on or during holidays, holiday weekends, special events, or any other time when traffic is unusually heavy, including the following schedules:

HOLIDAY AND HOLIDAY WEEKEND LANE CLOSURE RESTRICTIONS

1. For **unexpected occurrence** that creates unusually high traffic volumes, as directed by the Engineer.
2. For **New Year's Day**, between the hours of **6:00 A.M.** December 31st and **7:00 P.M.** January 2nd. If New Year's Day is on a Friday, Saturday, Sunday or Monday, then until **7:00 P.M.** the following Tuesday.
3. For **Easter**, between the hours of **6:00 A.M.** Thursday and **7:00 P.M.** Monday.
4. For **Memorial Day**, between the hours of **6:00 A.M.** Friday and **7:00 P.M.** Tuesday.
5. For **Independence Day**, between the hours of **6:00 A.M.** the day before Independence Day and **7:00 P.M.** the day after Independence Day.

If **Independence Day** is on a Friday, Saturday, Sunday or Monday, then between the hours of **6:00 A.M.** the Thursday before Independence Day and **7:00 P.M.** the Tuesday after Independence Day.

6. For **Labor Day**, between the hours of **6:00 A.M.** Friday and **7:00 P.M.** Tuesday.

7. For **Thanksgiving**, between the hours of **6:00 A.M.** Tuesday and **7:00 P.M.** Monday.
8. For **Christmas**, between the hours of **6:00 A.M.** the Friday before the week of Christmas Day and **7:00 P.M.** the following Tuesday after the week of Christmas Day.
9. For **King Mackerel Tournament**, between the hours of **6:00 A.M.** the **Thursday** before the **King Mackerel Tournament** and **7:00 P.M.** the following **Sunday** after the **King Mackerel Tournament**.

Holidays and holiday weekends shall include New Year's, Easter, Memorial Day, Independence Day, Labor Day, Thanksgiving, and Christmas. The Contractor shall schedule his work so that lane closures will not be required during these periods, unless otherwise directed by the Engineer.

The time of availability for this intermediate contract work shall be the time the Contractor begins to install all traffic control devices for lane closures according to the time restrictions listed herein.

The completion time for this intermediate contract work shall be the time the Contractor is required to complete the removal of all traffic control devices for lane closures according to the time restrictions stated above and place traffic in the existing traffic pattern.

The liquidated damages are **Five Hundred Dollars (\$ 500.00)** per fifteen (**15**) minute time period.

INTERMEDIATE CONTRACT TIME NUMBER 3 AND LIQUIDATED DAMAGES:

(2-20-07) (Rev. 10-15-13)

108

SP1 G14 E

The Contractor shall complete the required work of installing, maintaining and removing the traffic control devices for road closures and restoring traffic to the existing traffic pattern. The Contractor shall not close **NC 211 (-L-/LREV-)**, **NC 906 (-YREV-)**, **NC 133 (-Y14A-)**, and/or **SR 1969 (-Y14C-/Y14D-)** during the following time restrictions:

DAY AND TIME RESTRICTIONS

**Monday thru Sunday
5:00 AM to 12:00 AM (midnight)**

The maximum allowable time for girder installation is **thirty (30)** minutes for **NC 211 (-L- / -LREV-)**. The maximum allowable time for signal mast arms removal or installation is **thirty (30)** minutes for **NC 211 (-L-/LREV-)**, **NC 906 (-YREV-)**, **NC 133 (-Y14A-)**, and/or **SR 1969 (-Y14C-/Y14D-)**. The Contractor shall reopen the travel lanes to traffic until any resulting traffic queue is depleted.

The time of availability for this intermediate contract time will be the time the Contractor begins to install traffic control devices required for the road closures according to the time restrictions stated herein.

The completion time for this intermediate contract time will be the time the Contractor is required to complete the removal of traffic control devices required for the road closures according to the time restrictions stated herein and restore traffic to the existing traffic pattern.

The liquidated damages are **One Thousand Dollars (\$ 1,000.00)** per fifteen (15) minute time period.

INTERMEDIATE CONTRACT TIME NUMBER 4 AND LIQUIDATED DAMAGES:

(2-20-07) (Rev. 6-18-13)

108

SP1 G14 F

The Contractor shall complete the work required of **Phase I, Step #5.4** as shown on Sheet **TMP-3** and shall place and maintain traffic on same.

The time of availability for this intermediate contract time is the **Friday at 7:00 PM** that the Contractor elects to begin the work.

The completion time for this intermediate contract time is the following **Monday at 6:00 AM** after the time of availability.

The liquidated damages are **One Thousand Dollars (\$ 1,000.00)** per hour.

INTERMEDIATE CONTRACT TIME NUMBER 5 AND LIQUIDATED DAMAGES:

(2-20-07) (Rev. 6-18-13)

108

SP1 G14 H

The Contractor shall complete the work required of **Phase IB, Steps #13.2 thru #13.6** as shown on Sheet **TMP-3A** and shall place and maintain traffic on same.

The date of availability for this intermediate contract time is the date the Contractor elects to begin the work.

The completion date for this intermediate contract time is the date which is **thirty (30)** consecutive calendar days after and including the date of availability.

The liquidated damages are **One Thousand Dollars (\$ 1,000.00)** per calendar day.

INTERMEDIATE CONTRACT TIME NUMBER 6 AND LIQUIDATED DAMAGES:

(2-20-07) (Rev. 6-18-13)

108

SP1 G14 F

The Contractor shall complete the work required of **Phase I, Step #16.2** as shown on Sheet **TMP-3B** and shall place and maintain traffic on same.

The time of availability for this intermediate contract time is the **Sunday at 7:00 PM, during the off-season as defined in Intermediate Contract #2**, that the Contractor elects to begin the work.

The completion time for this intermediate contract time is the following **Friday at 6:00 AM during the off-season**, after the time of availability.

The liquidated damages are **Five Hundred Dollars (\$ 500.00)** per fifteen (15) minute time period.

INTERMEDIATE CONTRACT TIME NUMBER 7 AND LIQUIDATED DAMAGES:

(2-20-07) (Rev. 6-18-13)

108

SP1 G14 H

The Contractor shall complete the work required of **Phase I, Step #16.4** as shown on Sheet **TMP-3B** and shall place and maintain traffic on same.

The date of availability for this intermediate contract time is the date the Contractor elects to begin the work, **during the off season as defined in Intermediate Contract #2 but no later than fourteen (14) consecutive calendar days prior to the end of the off season.**

The completion date for this intermediate contract time is the date, **during the off-season**, which is **fourteen (14) consecutive calendar days** after and including the date of availability.

The liquidated damages are **One Thousand Dollars (\$ 1,000.00)** per calendar day.

INTERMEDIATE CONTRACT TIME NUMBER 8 AND LIQUIDATED DAMAGES:

(2-20-07) (Rev. 6-18-13)

108

SP1 G14 F

The Contractor shall complete the work required of **Phase IB, Step #16.5** as shown on Sheet **TMP-3B** and shall place and maintain traffic on same.

The work shall be completed in two (2) consecutive weekends of the Contractor's choosing, beginning at 7:00 P.M. on a Friday and ending at 6:00 A.M. the following Monday for each weekend.

The time of availability for this intermediate contract time is the **Friday at 7:00 PM of the first weekend** that the Contractor elects to begin the work.

The completion time for this intermediate contract time is the date which is the **Monday at 6:00 AM of the second weekend** after the time of availability.

The liquidated damages are **One Thousand Dollars (\$ 1,000.00)** per hour.

INTERMEDIATE CONTRACT TIME NUMBER 9 AND LIQUIDATED DAMAGES:

(2-20-07) (Rev. 6-18-13)

108

SP1 G14 F

The Contractor shall complete the work required of **Phase II, Steps #3.2 thru #3.4** as shown on Sheet **TMP-3C** and shall place and maintain traffic on same.

The date of availability for this intermediate contract time is **September 16th of any year the Contractor elects to begin work after the Date of Availability, as defined in the Contract Time and Liquidated Damages provision for this area.**

The completion date for this intermediate contract time is **August 15th of the following year after the date of availability for this intermediate contract time.**

The liquidated damages are **Two Thousand Dollars (\$ 2,000.00)** per calendar day.

INTERMEDIATE CONTRACT TIME NUMBER 10 AND LIQUIDATED DAMAGES:

(2-20-07) (Rev. 6-18-13)

108

SP1 G14 H

The Contractor shall complete the work required of **Phase II, Steps #4.3 thru #4.6** as shown on Sheet **TMP-3C** and shall place and maintain traffic on same.

The date of availability for this intermediate contract time is the date the Contractor elects to begin the work, **during the off season as defined in Intermediate Contract #2 but no later than eighteen (18) consecutive calendar days prior to the end of the off season.**

The completion date for this intermediate contract time is the date, **during the off-season**, which is **eighteen (18) consecutive calendar days after and including the date of availability.**

The liquidated damages are **One Thousand Dollars (\$ 1,000.00)** per calendar day.

PERMANENT VEGETATION ESTABLISHMENT:

(2-16-12) (Rev. 10-15-13)

104

SP1 G16

Establish a permanent stand of the vegetation mixture shown in the contract. During the period between initial vegetation planting and final project acceptance, perform all work necessary to establish permanent vegetation on all erodible areas within the project limits, as well as, in borrow and waste pits. This work shall include erosion control device maintenance and installation, repair seeding and mulching, supplemental seeding and mulching, mowing, and fertilizer topdressing, as directed. All work shall be performed in accordance with the applicable section of the *2018 Standard Specifications*. All work required for initial vegetation planting shall be performed as a part of the work necessary for the completion and acceptance of the Intermediate Contract Time (ICT). Between the time of ICT and Final Project acceptance, or otherwise referred to as the vegetation establishment period, the Department will be responsible for preparing the required National Pollutant Discharge Elimination System (NPDES) inspection records.

Once the Engineer has determined that the permanent vegetation establishment requirement has been achieved at an 80% vegetation density (the amount of established vegetation per given area to stabilize the soil) and no erodible areas exist within the project limits, the Contractor will be notified to remove the remaining erosion control devices that are no longer needed. The Contractor will be responsible for, and shall correct any areas disturbed by operations performed in permanent vegetation establishment and the removal of temporary erosion control measures, whether occurring prior to or after placing traffic on the project.

Payment for *Response for Erosion Control, Seeding and Mulching, Repair Seeding, Supplemental Seeding, Mowing, Fertilizer Topdressing, Silt Excavation, and Stone for Erosion Control* will be made at contract unit prices for the affected items. Work required that is not represented by contract line items will be paid in accordance with Articles 104-7 or 104-3 of the *2018 Standard Specifications*. No additional compensation will be made for maintenance and removal of temporary erosion control items.

CONSTRUCTION MORATORIUM (In-Water Work):

(7-15-14)

SP1 G18B

No in-water work will be allowed from **April 1** through **September 30** of any year (**for Dutchman Creek only**).

CONSTRUCTION MORATORIUM (Bats):

(1-19-16)

SP1 G18C

No tree cutting will be allowed when **temperature is 40 degrees or less.**

SCHEDULE OF ESTIMATED COMPLETION PROGRESS:

(7-15-08) (Rev. 5-13-19)

108-2

SP1 G58

The Contractor's attention is directed to the Standard Special Provision entitled *Availability of Funds Termination of Contracts* included elsewhere in this proposal. The Department of Transportation's schedule of estimated completion progress for this project as required by that Standard Special Provision is as follows:

<u>Fiscal Year</u>	<u>Progress (% of Dollar Value)</u>
2022	(7/01/21 - 6/30/22) 14% of Total Amount Bid
2023	(7/01/22 - 6/30/23) 24% of Total Amount Bid
2024	(7/01/23 - 6/30/24) 23% of Total Amount Bid
2025	(7/01/24 - 6/30/25) 22% of Total Amount Bid
2026	(7/01/25 - 6/30/26) 14% of Total Amount Bid
2027	(7/01/26 - 6/30/27) 3% of Total Amount Bid

The Contractor shall also furnish his own progress schedule in accordance with Article 108-2 of the *2018 Standard Specifications*. Any acceleration of the progress as shown by the Contractor's progress schedule over the progress as shown above shall be subject to the approval of the Engineer.

DISADVANTAGED BUSINESS ENTERPRISE:

(10-16-07)(Rev. 8-17-21)

102-15(J)

SP1 G61

Description

The purpose of this Special Provision is to carry out the U.S. Department of Transportation's policy of ensuring nondiscrimination in the award and administration of contracts financed in whole or in part with Federal funds. This provision is guided by 49 CFR Part 26.

Definitions

Additional DBE Subcontractors - Any DBE submitted at the time of bid that will not be used to meet the DBE goal. No submittal of a Letter of Intent is required.

Committed DBE Subcontractor - Any DBE submitted at the time of bid that is being used to meet the DBE goal by submission of a Letter of Intent. Or any DBE used as a replacement for a previously committed DBE firm.

Contract Goal Requirement - The approved DBE participation at time of award, but not greater than the advertised contract goal.

DBE Goal - A portion of the total contract, expressed as a percentage, that is to be performed by committed DBE subcontractor(s).

Disadvantaged Business Enterprise (DBE) - A firm certified as a Disadvantaged Business Enterprise through the North Carolina Unified Certification Program.

7" JOINTED CONCRETE TRUCK APRON:**Description**

Construct 7" Jointed Concrete Truck Apron in accordance with the plans and as directed by the Engineer.

Materials

Concrete shall be Class AA Concrete meeting the requirements of Section 1000 of the *Standard Specifications*.

Wire mesh reinforcement shall be W3.5xW3.5 or W4xW4 welded wire fabric meeting the requirements of Section 1070 of the *2018 Standard Specifications*. The wire mesh reinforcement shall be centered in the 7" slab.

Construction Methods

Construct joints as directed by the Engineer.

Measurement and Payment

7" *Concrete Truck Apron* will be measured and paid for in square yards of truck apron that has been completed and accepted. Such price and payment will be full compensation for all work of constructing the jointed concrete truck apron, including but not limited to excavating and backfilling, furnishing and placing concrete and wire mesh;, constructing joints, and sealing the concrete.

Pay Item

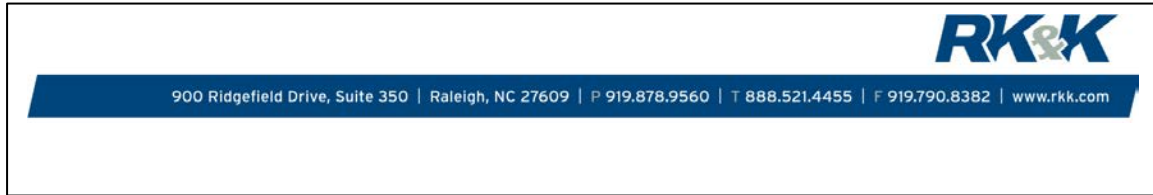
7" Concrete Truck Apron

Pay Unit

Square Yard

PROJECT SPECIAL PROVISIONS

Utilities by Others

**General:**

The following utility companies have facilities that will be in conflict with the construction of this project:

- A) Brunswick EMC (Trans) – Power (Trans)
- B) Brunswick EMC (Dist) – Power (Dist)
- C) Duke Energy – Power (Dist)
- D) City of Southport – Power (Dist)
- E) Piedmont Natural Gas – Natural Gas (Dist)
- F) AT&T Telecommunications – Telecommunications
- G) ATMC Communications – Telecommunications
- H) Spectrum – CATV/Communications

The conflicting facilities of these concerns will be adjusted prior to the date of availability, unless otherwise noted and are therefore listed in these special provisions for the benefit of the Contractor. All utility work listed herein will be done by the utility owners. All utilities are shown on the plans from the best available information.

The Contractor's attention is directed to Article 105-8 of the 2018 Standard Specifications.

Utilities Requiring Adjustment:

Utility relocations are shown on the Utilities by Others Plans.

A) Brunswick EMC (Trans)

- 1) Brunswick EMC (Trans) completed all relocation work with the exception of the project area -L- (NC 211) STA 47+50 (+/-) to 78+00 (+/-) RT. Relocations in this area will be complete 548 days after Construction Date of Availability.
- 2) Contact person for Brunswick EMC (Trans) is Mr. Rodney Scruggs at (910) 755-4246

PROJECT SPECIAL PROVISIONS

Utilities by Others

B) Brunswick EMC (Dist)

- 1) Brunswick EMC (Dist) completed all relocation work with the exception of the project area -L- (NC 211) STA 47+50 (+/-) to 78+00 (+/-) RT. Relocations in this area will be complete 548 days after Construction Date of Availability.
- 2) Contact person for Brunswick EMC (Dist) is Mr. Michael Blue at (910) 540-1087

C) Duke Energy (Dist)

- 1) Duke Energy (Dist) has completed their relocation work and will remove remaining pole line after AT&T has transferred off. See AT&T Telecommunications for timeline.
- 2) Contact person for Duke Energy (Dist) is Mr. Joe Graves at (910) 619-9339

D) City of Southport Power (Dist)

- 1) City of Southport Power (Dist) completed all relocation work
- 2) Contact person for City of Southport power (Dist) is Mr. Mike Blue (Brunswick EMC (Dist)) at (910) 540-1087

E) Piedmont Natural Gas (Dist)

- 1) Piedmont Natural Gas (Dist) completed all relocation work with the exception of the project area -L- (NC 211) STA 305+00 (+/-) to 314+00 (+/-) LT. Relocations will be complete in line with the project area delay of 548 days after Construction Date of Availability.
- 2) Contact person for Piedmont Natural Gas (Dist) is Mr. DJ Medeiros at (910) 431-3233

F) AT&T Telecommunications

- 1) AT&T has completed the relocation their relocation work from the beginning of the project through Station -L- (NC 211) STA 227+00 (+/-) with the exception in Note #2.
- 2) AT&T will install facilities in the following area -L- (NC 211) STA 47+50 (+/-) to 78+00 (+/-) RT and fiber cutovers will be complete 548 days after Construction Date of Availability.
- 3) AT&T will install facilities from -L- (NC 211) STA 227+00+00 (+/-) to 432+50 (+/-) and fiber cutovers will be complete 548 days after Construction Date of Availability.
- 4) Contact person for AT&T Telecommunications is Ms. Chrissy Coston at (910) 341-7664

PROJECT SPECIAL PROVISIONS

Utilities by Others

G) ATMC Communications

- 1) ATMC Communications completed all relocation work with the exception of the project area -L- (NC 211) STA 47+50 (+/-) to 78+00 (+/-) RT. Relocations in this area will be complete 548 days after Construction Date of Availability.
- 2) Contact person for ATMC Communications is Mr. Scott Duton at (910) 232-7344

H) Spectrum CATV/Communications

- 1) Spectrum CATV/Communications completed all relocation work with the exception of the project area -L- (NC 211) STA 47+50 (+/-) to 78+00 (+/-) RT. Relocations in this area will be complete 548 days after Construction Date of Availability.
- 2) Spectrum CATV/Communications is Mr. Steve Barnette at (910) 772-5755

23. DYNAMIC MESSAGE SIGN (DMS)

23.1. DESCRIPTION

To ensure compatibility with the existing DMS Control Software deployed in the State, furnish NTCIP compliant DMSs that are fully compatible with Daktronics, Inc. Vanguard V4 software (also referred to hereinafter as the “Control Software”). Contact the engineer to inquire about the current version being used.

Furnish and install DMSs compliant with UL standards 48, 50 and 879.

Add and configure the new DMSs in the existing DMS database at the Division 3 Traffic Operations Center using the Control Software and computer system. Furnish, install, test, integrate and make fully operational the new back-to-back pedestal type DMSs at the locations shown in the Project Plans.

Furnish operating DMS systems consisting of, but not limited to, the following:

- **DMS Type 1C** – Front Access Full Color 20mm – 96 pixels high by 208 pixels wide
 - 3 lines, 11 characters per line, using 18” high characters.

Use only UL listed and approved electronic and electrical components in the DMS system.

Use only approved DMS models listed on the NCDOT Qualified Products List (QPL) at the time of construction. NCDOT Qualified Products List can be accessed via official website at:

<https://apps.ncdot.gov/products/qpl/>

Communications between the DMSs and the Division office will be accomplished over cellular modems. The Department will furnish and install the cellular modem in the cabinet at the locations shown in the Project Plans.

23.2. MATERIALS

A. Environmental Requirements

Construct the DMS and DMS controller cabinet so the equipment within is protected against moisture, dust, corrosion, and vandalism.

Design the DMS system to comply with the requirements of Section 2.1 (Environmental and Operating Standards) of NEMA TS 4-2016.

B. Viewing Requirements for all DMS

Each line of text should be clearly visible and legible to a person with 20/20 corrected vision from a distance of 900 feet in advance of the DMS at an eye height of 3.5 feet along the axis.

Any line must display equally spaced and equally sized alphanumeric individual characters. Each character must be at least 18 inches in height (unless otherwise noted in the plans) and composed from a luminous dot matrix.

C. Housing Requirements for all DMS

Construct the external skin of the sign housing out of aluminum alloy 5052 H32 that is a minimum of 1/8 inches thick for all walk-in DMS and 0.090-inch-thick for all front access or embedded DMS. Ensure the interior structure is constructed of aluminum. Ensure that no internal frame connections or

R-5021

TS-119

Brunswick County

Payment will be made under:

Pay Item

Pay Unit

Dynamic Message Sign (Type 1C).....Each

R-5021**TS-122****Brunswick County**

		onChange, greaterThanValue, smallerThanValue
eventConfigLogOID	NTCIP 1103 – A.7.5.7	FSORS
eventConfigAction	NTCIP 1103 – A.7.5.8	FSORS
maxEventLogSize	NTCIP 1103 – A.7.6	Shall be at least 20
maxEventClasses	NCTIP 1103 – A.7.2	Shall be at least 16
eventClassDescription	NTCIP 1103 – A.7.3.4	FSORS
communityNamesMax	NTCIP 1103 – A.7.8	Shall be at least 3
numFonts	NTCIP 1203 – 5.4.1	Shall be at least 12
maxFontCharacters	NTCIP 1203 – 5.4.3	Shall be at least 255
defaultFlashOn	NTCIP 1203 – 5.5.3	The DMS shall support flash “on” times ranging from 0.1 to 9.9 seconds in 0.1 second increments
defaultFlashOnActive	NTCIP 1203 – 5.5.4	The DMS shall support flash “on” times ranging from 0.1 to 9.9 seconds in 0.1 second increments
defaultFlashOff	NTCIP 1203 - 5.5.5	The DMS shall support flash “off” times ranging from 0.1 to 9.9 seconds in 0.1 second increments
defaultFlassOffActive	NTCIP 1203 – 5.5.6	The DMS shall support flash “off” times ranging from 0.1 to 9.9 seconds in 0.1 second increments
defaultBackgroundColor	NTCIP 1203 – 5.5.2	The DMS shall support the black background color
defaultForegroundColor	NTCIP 1203 - 5.5.2	The DMS shall support the color foreground color
defaultJustificationLine	NTCIP 1203 - 5.5.9	The DMS shall support the following forms of line justification: left, center, and right
defaultJustificationPage	NTCIP 1203 - 5.5.11	The DMS shall support the following forms of page justification: top, middle, and bottom
defaultPageOnTime	NTCIP 1203 - 5.5.13	The DMS shall support page “on” times ranging from 0.1 to 25.5 seconds in 0.1 second increments
defaultPageOffTime	NTCIP 1203 - 5.5.15	The DMS shall support page “off” times ranging from 0.0 to 25.5 seconds in 0.1 second increments
defaultCharacterSet	NTCIP 1203 - 5.5.21	The DMS shall support the eight bit character set

R-5021**TS-125****Brunswick County****F. NTCIP Acceptance Testing**

Test the NTCIP requirements outlined above by a third party testing firm. Submit to the Engineer for approval a portfolio of the selected firm. Include the name, address, and a history of the selected firm in performing NTCIP testing along with references. Also provide a contact person's name and phone number. Submit detailed NTCIP testing plans and procedures, including a list of hardware and software, to the Engineer for review and approval 10 days in advance of a scheduled testing date. Develop test documents based on the NTCIP requirements of these Project Special Provisions. The acceptance test will use the NTCIP Exerciser, and/or other authorized testing tools and will follow the guidelines established in the ENTERPRISE Test Procedures. Conduct the test in North Carolina on the installed system in the presence of the Engineer. Document and certify the results of the test by the firm conducting the test and submit the Engineer for review and approval. In case of failures, remedy the problem and have the firm retest in North Carolina. Continue process until all failures are resolved. The Department reserves the right to enhance these tests as deemed appropriate to ensure device compliance.

24.2. MEASUREMENT AND PAYMENT

There will be no direct payment for the work covered by this section.

Payment for this work will be covered in the applicable sections of these Project Special Provisions at the contract unit price for "Dynamic Message Sign (Type 1C)" and will be full compensation for all work listed above.

P-2

***Electronically Transmitted
Reverification***
U.S. ARMY CORPS OF ENGINEERS
WILMINGTON DISTRICT

Action Id. SAW-2007-03647-010 County: Brunswick County U.S.G.S. Quad: Lockwoods Folly

GENERAL PERMIT (REGIONAL AND NATIONWIDE) VERIFICATION

Permittee: Mr. Mason Herndon
NCDOT, Project Development Environmental Engineer

Address: 5501 Barbados Blvd.
Castle Hayne, NC 28429

Size (miles)	<u>7.263</u>	Nearest Town	<u>Southport</u>
Nearest Waterway	<u>River Swamp</u>	River Basin	<u>Lower Pee Dee</u>
USGS HUC	<u>03040208</u>	Coordinates	Latitude: <u>33.9578374387385</u> Longitude: <u>-78.0724545271761</u>

Location description: The project (R-5021) is located between Midway/Middleton Ave. and Southport near the intersection of Highway 87 along Highway 211, Brunswick County.

Description of projects area and activity: The project (Hwy 211) involves widening the existing roadway from 2 lanes to 4 with a raised median, and adding grade separated interchanges at NC 906 (Midway/Middleton Rd.) and NC 133 (Long Beach Rd.). The project also includes replacing the bridge at Dutchman Creek as well as culverts along the project. Standard road building equipment, such as trucks, cranes, and bulldozers will be used. The 7.263 mile long project involves the permanent fill of 15.995 acres of wetlands, 0.747 acre of excavation in wetlands, 1.685 acres of mechanized land clearing, 1.905 acres of permanent surface water impacts, 0.204 acres of temporary surface water impacts, 1,149 linear feet of permanent stream impacts, and 195 linear feet of temporary stream impact.

This verification addresses changes in the intersection at the western end of the project reflected in new permit drawing sheets 1, 5, 6, 8, 9, 82, 83, 94, and 95 of 95 dated 10/5/2021, attached.

Applicable Law: Section 404 (Clean Water Act, 33 USC 1344)
 Section 10 (Rivers and Harbors Act, 33 USC 403)

Authorization: Regional General Permit Number : **1982000031**
SEE ATTACHED RGP or NWP GENERAL, REGIONAL AND/OR SPECIAL CONDITIONS

Your work is authorized by the above referenced permit provided it is accomplished in strict accordance with the attached conditions and your submitted application and referenced permit plans 1-95 of 95 dated 5/8/2018, 5/15/2018, 8/17/2018, 8/22/2018, 2/19/2021, and 10/5/2021, and Utility plans of record sheets 1-22 of 22 dated 6/27/2018 and 8/20/2018. ** As indicated above there have been changes to 9 sheets dated 10/5/2021 described above and attached. Any violation of the attached conditions or deviation from your submitted plans may subject the permittee to a stop work order, a restoration order, a Class I administrative penalty, and/or appropriate legal action.

This verification will remain valid until the expiration date identified below unless the nationwide and/or regional general permit authorization is modified, suspended or revoked. If, prior to the expiration date identified below, the nationwide and/or regional general permit authorization is reissued and/or modified, this verification will remain valid until the expiration date identified below, provided it complies with all requirements of the modified nationwide permit. If the nationwide and/or regional general permit authorization expires or is suspended, revoked, or is modified, such that the activity would no longer comply with the terms and conditions of the nationwide permit, activities which have commenced (i.e., are under construction) or are under contract to commence in reliance upon the nationwide and/or regional general permit, will remain authorized provided the activity is completed within twelve months of the date of the nationwide and/or regional general permit's expiration, modification or revocation, unless discretionary authority has been exercised on a case-by-case basis to modify, suspend or revoke the authorization.

SAW-2007-03647-010

Activities subject to Section 404 (as indicated above) may also require an individual Section 401 Water Quality Certification. You should contact the NC Division of Water Resources (telephone 919-807-6300) to determine Section 401 requirements.

For activities occurring within the twenty coastal counties subject to regulation under the Coastal Area Management Act (CAMA), prior to beginning work you must contact the N.C. Division of Coastal Management in Morehead City, NC, at (252) 808-2808.

This Department of the Army verification does not relieve the permittee of the responsibility to obtain any other required Federal, State or local approvals/permits.

If there are any questions regarding this verification, any of the conditions of the Permit, or the Corps of Engineers regulatory program, please contact **Brad Shaver at (910) 251-4611 or Brad.E.Shaver@usace.army.mil.**

Remarks: This reverification of Regional General Permit 31 replaces the expired verification first issued on October 2, 2018 and RGP 31 verification dated March 22, 2021. There is a reduction in permanent wetland impacts which is reflected on the new mitigation transfer form attached to this decision.

Corps Regulatory Official:  Digitally signed by Brad Shaver
Date: 2021.10.13 15:17:21 -04'00'

Date: **October 13, 2021**

Expiration Date of Verification: **May 25, 2025**

The Wilmington District is committed to providing the highest level of support to the public. To help us ensure we continue to do so, please complete our Customer Satisfaction Survey, located online at http://corpsmapu.usace.army.mil/cm_apex/f?p=136:4:0.

Copy furnished (electronic):

Mr. Chris Rivenbark, NCDOT, Division 3

Ms. Hannah Sprinkle, NCDEQ-DWR

Ms. Beth Harmon, DMS

Mr. Todd Tugwell, USACE

SPECIAL CONDITIONS
R-5021, Highway 211 Widening

1. **Work Limits:** All work authorized by this permit shall be performed in strict compliance with referenced permit plans 1-95 of 95 dated 5/8/2018, 5/15/2018, 8/17/2018, 8/22/2018, 2/19/2021, and 10/5/2021, which are a part of this permit. The Utility plans of record are sheets 1-22 of 22 dated 6/27/2018 and 8/20/2018. The Permittee shall ensure that the construction design plans for this project do not deviate from the permit plans attached to this authorization. Any modification to the attached permit plans must be approved by the US Army Corps of Engineers prior to any active construction in waters or wetlands.
2. **Unauthorized Dredge or Fill:** Except as authorized by this permit or any U.S. Army Corps of Engineers approved modification to this permit, no excavation, fill, or mechanized land-clearing activities shall take place at any time in the construction or maintenance of this project, within waters or wetlands, or shall any activities take place that cause the degradation of waters or wetlands. There shall be no excavation from, waste disposal into, or degradation of, jurisdictional wetlands or waters associated with this permit without appropriate modification of this permit, including appropriate compensatory mitigation. This prohibition applies to all borrow and waste activities connected with this project. In addition, except as specified in the plans attached to this permit, no excavation, fill or mechanized land-clearing activities shall take place at any time in the construction or maintenance of this project, in such a manner as to impair normal flows and circulation patterns within, into, or out of waters or wetlands or to reduce the reach of waters or wetlands.
3. **Permit Distribution:** The Permittee shall require its contractors and/or agents to comply with the terms and conditions of this permit in the construction and maintenance of this project, and shall provide each of its contractors and/or agents associated with the construction or maintenance of this project with a copy of this permit. A copy of this permit, including all conditions, drawings and attachments shall be available at the project site during the construction and maintenance of this project.
4. **Pre-Construction Meeting:** The Permittee shall schedule and attend a preconstruction meeting between its representatives, the contractors representatives, and the U.S. Army Corps of Engineers, Wilmington Field Office, NCDOT Regulatory Project Manager, prior to any work within jurisdictional waters and wetlands to ensure that there is a mutual understanding of all the terms and conditions contained with this Department of Army Permit. The Permittee shall provide the Corps, Wilmington Field Office, NCDOT Project Manager, with a copy of the final permit plans at least two weeks prior to the preconstruction meeting along with a description of any changes that have been made to the project's design, construction methodology or construction timeframe. If the permit plans provided in the application have not changed a certification from the Division should be received stating that the final construction plans don't vary from the permit plans. The Permittee shall schedule the preconstruction meeting for a time frame when the Corps, NCDCM, and NCDWQ Project Managers can attend. The Permittee shall

P-5

invite the Corps, NCDCM, and NCDWR Project Managers a minimum of thirty (30) days in advance of the scheduled meeting in order to provide those individuals with ample opportunity to schedule and participate in the required meeting. The thirty (30) day requirement can be waived with the concurrence of the Corps.

5. **Notification of Construction Commencement and Completion:** The Permittee shall notify the U.S. Army Corps of Engineers in writing prior to beginning the work authorized by this permit and again upon completion of the work authorized by this permit.
6. **Reporting Address:** All reports, documentation and correspondence required by the conditions of this permit shall be submitted to the following address: U.S. Army Corps of Engineers, Regulatory Division, Wilmington Regulatory Field Office, 69 Darlington Ave, North Carolina, 28403, and by telephone at: 910-251-4611. The Permittee shall reference the following permit number, SAW-2007-03647, on all submittals.
7. **Permit Revocation:** The Permittee, upon receipt of a notice of revocation of this permit or upon its expiration before completion of the work will, without expense to the United States and in such time and manner as the Secretary of the Army or his authorized representative may direct, restore the water or wetland to its pre-project condition.
8. **Clean Fill:** The Permittee shall use only clean fill material for this project. The fill material shall be free from items such as trash, construction debris, metal and plastic products, and concrete block with exposed reinforcement bars. Soils used for fill shall not be contaminated with any toxic substance in concentrations governed by Section 307 of the Clean Water Act. Unless otherwise authorized by this permit, all fill material placed in waters or wetlands shall be generated from an upland source.
9. **Endangered Species Act:** The U.S. Fish and Wildlife Service's (USFWS's) Programmatic Biological Opinion (BO) titled "Northern Long-eared Bat (NLEB) Programmatic Biological Opinion for North Carolina Department of Transportation (NCDOT) Activities in Eastern North Carolina (Divisions 1-8)," dated March 25, 2015, and adopted on April 10, 2015, contains mandatory terms and conditions to implement the reasonable and prudent measures that are associated with "incidental take" that are specified in the BO. Your authorization under this Department of the Army permit is conditional upon your compliance with all the mandatory terms and conditions associated with incidental take of the BO, which terms and conditions are incorporated by reference in this permit. Failure to comply with the terms and conditions associated with incidental take of the BO, where a take of the listed species occurs, would constitute an unauthorized take, and it would also constitute non-compliance with your Department of the Army permit. The USFWS is the appropriate authority to determine compliance with the terms and conditions of its BO, and with the ESA.

10. **Culverts:**

A. Unless otherwise requested in the application and depicted on the approved permit plans, culverts greater than 48 inches in diameter shall be buried at least one foot below the bed of the stream. Culverts 48 inches in diameter and less shall be buried or placed on the stream bed as practicable and appropriate to maintain aquatic passage, and every effort shall be made to maintain existing channel slope. The bottom of the culvert shall be placed at a depth below the natural stream bottom to provide for passage during drought or low flow conditions. Measures to avoid destabilizing the channel, including head cutting upstream, shall be considered in the placement of the culvert.

B. Measures shall be included in the construction/installation that will promote the safe passage of fish and other aquatic organisms. The dimension, pattern, and profile of the stream above and below a pipe or culvert shall not be modified by widening the stream channel or by reducing the depth of the stream in connection with the construction activity. The width, height, and gradient of a proposed opening shall be such as to pass the average historical low flow and spring flow without adversely altering flow velocity. Spring flow should be determined from gauge data, if available. In the absence of such data, bankfull flow can be used as a comparable level.

C. The Permittee shall implement all reasonable and practicable measures to ensure that equipment, structures, fill pads, work, and operations associated with this project do not adversely affect upstream and/or downstream reaches. Adverse effects include, but are not limited to, channel instability, flooding, and/or stream bank erosion. The Permittee shall routinely monitor for these effects, cease all work when detected, take initial corrective measures to correct actively eroding areas, and notify this office immediately. Permanent corrective measures may require additional authorization by the U.S. Army Corps of Engineers.

D. Culverts placed within wetlands must be installed in a manner that does not restrict the flow and circulation patterns of waters of the United States. Culverts placed across wetland fills purely for the purposes of equalizing surface water shall not be buried, but the culverts must be of adequate size and/or number to ensure unrestricted transmission of water.

11. **Sediment Erosion Control:**

A. During the clearing phase of the project, heavy equipment shall not be operated in surface waters or stream channels. Temporary stream crossings will be used to access the opposite sides of stream channels. All temporary diversion channels and stream crossings will be constructed of non-erodible materials. Grubbing of riparian vegetation will not occur until immediately before construction begins on a given segment of stream channel.

B. No fill or excavation impacts for the purposes of sedimentation and erosion control shall occur within jurisdictional waters, including wetlands, unless the impacts are included on the plan drawings and specifically authorized by this permit. This

includes, but is not limited to, sediment control fences and other barriers intended to catch sediment losses.

C. The Permittee shall remove all sediment and erosion control measures placed in wetlands or waters, and shall restore natural grades on those areas, prior to project completion.

D. The Permittee shall use appropriate sediment and erosion control practices which equal or exceed those outlined in the most recent version of the "North Carolina Sediment and Erosion Control Planning and Design Manual" to ensure compliance with the appropriate turbidity water quality standard. Erosion and sediment control practices shall be in full compliance with all specifications governing the proper design, installation and operation and maintenance of such Best Management Practices in order to ensure compliance with the appropriate turbidity water quality standards. This shall include, but is not limited to, the immediate installation of silt fencing or similar appropriate devices around all areas subject to soil disturbance or the movement of earthen fill, and the immediate stabilization of all disturbed areas. Additionally, the project shall remain in full compliance with all aspects of the Sedimentation Pollution Control Act of 1973 (North Carolina General Statutes Chapter 113A Article 4). Adequate sedimentation and erosion control measures shall be implemented prior to any ground disturbing activities to minimize impacts to downstream aquatic resources. These measures shall be inspected and maintained regularly, especially following rainfall events. All fill material shall be adequately stabilized at the earliest practicable date to prevent sediment from entering into adjacent waters or wetlands.

12. **Temporary Excavation/Fills:** Within 30 days of the date of completing the authorized work, the Permittee shall remove all temporary fills in waters of the United States and restore the affected areas to pre-construction contours and elevations. The affected areas shall be re-vegetated with native, non-invasive vegetation as necessary to minimize erosion and ensure site stability. Temporary excavation (typically organics) associated with culvert installation should be side cast and replaced once the pipes are installed to return the stream channel and flood plain to original dimensions.

13. **Borrow and Waste:** To ensure that all borrow and waste activities occur on high ground and do not result in the degradation of adjacent waters and wetlands, except as authorized by this permit, the Permittee shall require its contractors and/or agents to identify all areas to be used as borrow and/or waste sites associated with this project. The Permittee shall provide the U.S. Army Corps of Engineers with appropriate maps indicating the locations of proposed borrow and/or waste sites as soon as such information is available. The Permittee shall submit to the Corps site-specific information needed to ensure that borrow and/or waste sites comply with all applicable Federal requirements, to include compliance with the Endangered Species Act and the National Historic Preservation Act, such as surveys or correspondence with agencies (e.g., the USFWS, the NC-HPO, etc.). The required information shall also include the location of all aquatic features, if any, out to a distance of 400 feet beyond the nearest boundary of the site. The Permittee shall not approve any borrow and/or waste sites before receiving written confirmation from the

Corps that the proposed site meets all Federal requirements, whether or not waters of the U.S. , including wetlands, are located in the proposed borrow and/or waste site. All delineations of aquatic sites on borrow and/or waste sites shall be verified by the U.S. Army Corps of Engineers and shown on the approved reclamation plans. The Permittee shall ensure that all borrow and/or waste sites comply with this Special Condition. Additionally, the Permittee shall produce and maintain documentation of all borrow and waste sites associated with this project. This documentation will include data regarding soils, vegetation, hydrology, any delineation(s) of aquatic sites, and any jurisdictional determinations made by the Corps to clearly demonstrate compliance with this Special Condition. All information will be available to the U.S. Army Corps of Engineers upon request. The Permittee shall require its contractors to complete and execute reclamation plans for each borrow and/or waste site and provide written documentation that the reclamation plans have been implemented and all work is completed. This documentation will be provided to the U.S. Army Corps of Engineers within 30 days of the completion of the reclamation work.

* 14. **Compensatory Mitigation:**

A. In order to compensate for impacts associated with this permit, mitigation shall be provided in accordance with the provisions outlined on the most recent version of the attached Compensatory Mitigation Responsibility Transfer Form. The requirements of this form, including any special conditions listed on this form, are hereby incorporated as special conditions of this permit authorization.

B. ** There has been a reduction in wetland mitigation need since the last reverification in March 2021. In total, 18.387 acres of wetland loss shall be mitigated through North Carolina Division of Mitigation Services (DMS) at a 2:1 ratio for a total credit need of 36.774 acres. Take impacts associated with Site # 15 shall be mitigated via DMS at a 1:1 ratio for a need of 0.04 of an acre.

**Stream mitigation has been previously satisfied in 2018

15. **Aquatic Life Movements:** No activity may substantially disrupt the necessary life cycle movements of those species of aquatic life indigenous to the waterbody, including those species that normally migrate through the area. All discharges of dredged or fill material within waters of the United States shall be designed and constructed to maintain low flows to sustain the movement of aquatic species.



Digitally signed by Brad
Shaver
Date: 2021.10.13 15:18:02
-04'00'

P-9

Action ID Number: SAW-2007-03647-010

County: Brunswick County

Permittee: North Carolina Department of Transportation

Project Name: NCDOT/R-5021/NC 211/Division 3

Date Verification Issued: October 13, 2021

Project Manager: Brad Shaver

Upon completion of the activity authorized by this permit and any mitigation required by the permit, sign this certification and return it to the following address:

US ARMY CORPS OF ENGINEERS
WILMINGTON DISTRICT
Attn: Brad Shaver
69 Darlington Ave
Wilmington, NC 28403

Please note that your permitted activity is subject to a compliance inspection by a U. S. Army Corps of Engineers representative. Failure to comply with any terms or conditions of this authorization may result in the Corps suspending, modifying or revoking the authorization and/or issuing a Class I administrative penalty, or initiating other appropriate legal action.

I hereby certify that the work authorized by the above referenced permit has been completed in accordance with the terms and condition of the said permit, and required mitigation was completed in accordance with the permit conditions.

Signature of Permittee

Date

ROY COOPER
 Governor
 ELIZABETH S. BISER
 Secretary
 S. DANIEL SMITH
 Director



October 20, 2021
 Brunswick County
 NCDWR Project No. 20181014 v.4
 TIP R-5021

MODIFICATION of APPROVAL of 401 WATER QUALITY CERTIFICATION with ADDITIONAL CONDITIONS

Mr. Philip S. Harris, III, P.E., CPM
 Natural Environment Section Head
 Project Development and Environmental Analysis
 North Carolina Department of Transportation
 1598 Mail Service Center
 Raleigh, North Carolina, 27699-1598

Dear Mr. Harris:

You have our approval, in accordance with the conditions listed below, for the following impacts for the purpose of widening NC 211 between west of NC 906(Midway Rd) to east of NC 87 in Brunswick County:

Wetland Impacts in the Lumber River Basin

Site	Fill (ac)	Fill (temporary) (ac)	Excavation (ac)	Mechanized Clearing (ac)	Hand Clearing (ac)	Total Wetland Impact (ac)
Original approved impacts at Site 2	0.045	--	0.122	--	--	0.167
Impacts approved with this modification at Site 2	0	--	0	--	--	0
Difference	-0.045	--	-0.122	--	--	-0.167
Original approved impacts at Site 3	0.666	--	0.240	0.035	--	0.941
Impacts approved with this modification at Site 3	0.316	--	0	0.044	--	0.360
Difference	-0.350	--	-0.240	+0.009	--	-0.581

The project shall be constructed in accordance with your modified application dated received October 11, 2021. All the authorized activities and conditions associated with the original Water Quality Certification dated September 10, 2018 and subsequent modifications still apply except where superseded by this certification. After reviewing your application, we have decided that these impacts are covered by General Water Quality Certification Number 4135. This certification corresponds to the Regional General Permit 31 issued by the Corps of Engineers. In addition, you should acquire any other federal, state or local permits before you proceed with your project including (but not limited to) Sediment and Erosion Control, Non-Discharge and Water Supply Watershed regulations. This approval will expire with the accompanying 404 permit.

This approval is valid solely for the purpose and design described in your application (unless modified below). Should your project change, you must notify the NCDWR and submit a new application. If the property is sold, the



new owner must be given a copy of this Certification and approval letter, and is thereby responsible for complying with all the conditions. If total wetland fills for this project (now or in the future) exceed one acre, or of total impacts to streams (now or in the future) exceed 300 linear feet, compensatory mitigation may be required as described in 15A NCAC 2H .0506 (h) (6) and (7). Additional buffer impacts may require compensatory mitigation as described in 15A NCAC 2B.0259. For this approval to remain valid, you must adhere to the conditions listed in the attached certification(s) and any additional conditions listed below.

Condition(s) of Certification:

1. This modification is applicable only to the additional proposed activities. All of the authorized activities and conditions associated with the original Water Quality Certification dated September 10, 2018 and subsequent modifications still apply except where superseded by this certification.
2. A copy of this Water Quality Certification shall be maintained on the construction site at all times. In addition, the Water Quality Certification and all subsequent modifications, if any, shall be maintained with the Division Engineer and the on-site project manager. [15A NCAC 02H .0507(c) and 15A NCAC 02H .0506 (b)(2) and (c)(2)]

If you wish to contest any statement in the attached Certification you must file a petition for an administrative hearing. You may obtain the petition form from the office of Administrative hearings. You must file the petition with the office of Administrative Hearings within sixty (60) days of receipt of this notice. A petition is considered filed when it is received in the office of Administrative Hearings during normal office hours. The Office of Administrative Hearings accepts filings Monday through Friday between the hours of 8:00am and 5:00pm, except for official state holidays. The original and one (1) copy of the petition must be filed with the Office of Administrative Hearings.

The petition may be faxed-provided the original and one copy of the document is received by the Office of Administrative Hearings within five (5) business days following the faxed transmission. The mailing address for the Office of Administrative Hearings is:

Office of Administrative Hearings
6714 Mail Service Center
Raleigh, NC 27699-6714
Telephone: (919) 431-3000, Facsimile: (919) 431-3100

A copy of the petition must also be served on DEQ as follows:

Mr. Bill F. Lane, General Counsel
Department of Environmental Quality
1601 Mail Service Center

This letter completes the review of the Division of Water Resources under Section 401 of the Clean Water Act. If you have any questions, please contact Hannah Sprinkle at (910) 796-7306 or Hannah.Sprinkle@ncdenr.gov.

Sincerely,

DocuSigned by:

Amy Chapman

9C9886312DCD474...

:TOR

Division of Water Resources

Electronic copy only distribution:

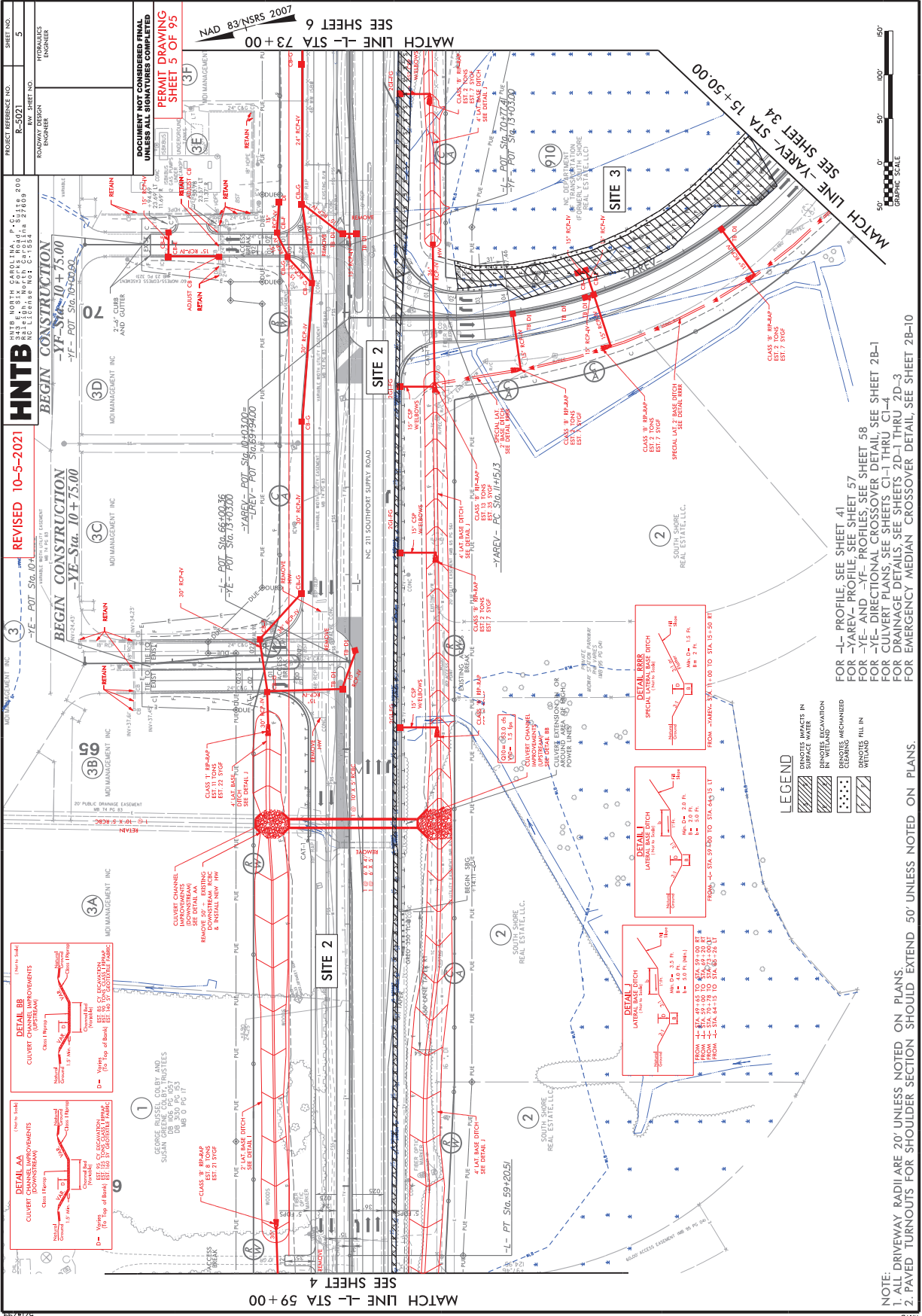
Brad Shaver, US Army Corps of Engineers, Wilmington Field Office
Mason Herndon, Division 3 Environmental Program Supervisor
Chris Rivenbark, NC Department of Transportation
Cathy Brittingham, NC Division of Coastal Management
Stephen Lane, NC Division of Coastal Management
Hannah Sprinkle, NC Division of Water Resources Wilmington Regional Office



File Copy



North Carolina Department of Environmental Quality | Division of Water Resources
512 North Salisbury Street | 1617 Mail Service Center | Raleigh, North Carolina 27699-1617
919.707.9000



NOTE: 1. ALL DRIVEWAY RADII ARE 20' UNLESS NOTED ON PLANS.
2. PAVED TURNOUTS FOR SHOULDER SECTION SHOULD EXTEND 50' UNLESS NOTED ON PLANS.

FOR -L- PROFILE SEE SHEET 41
FOR -YAREV- PROFILE SEE SHEET 57
FOR -YE- AND -YF- PROFILES, SEE SHEET 58
FOR -YF- DIRECTIONAL CROSSOVER DETAIL, SEE SHEET 2B-1
FOR CULVERT PLANS, SEE SHEETS C1-1 THRU C1-4
FOR DRAINAGE DETAILS, SEE SHEETS 2D-1 THRU 2D-3
FOR EMERGENCY MEDIAN CROSSOVER DETAIL, SEE SHEET 2B-10



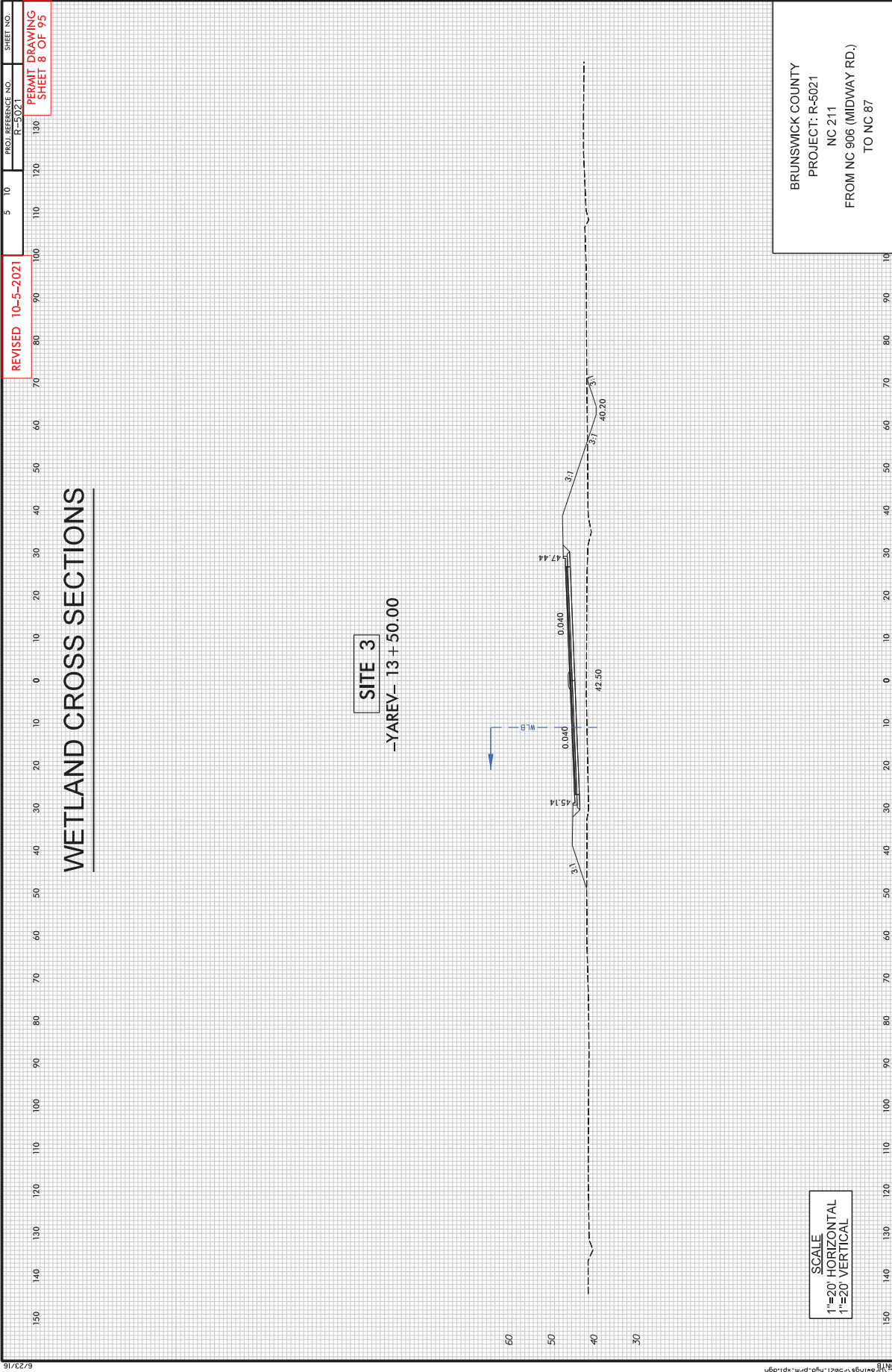
MATCH LINE L- STA 59+00
SEE SHEET 4

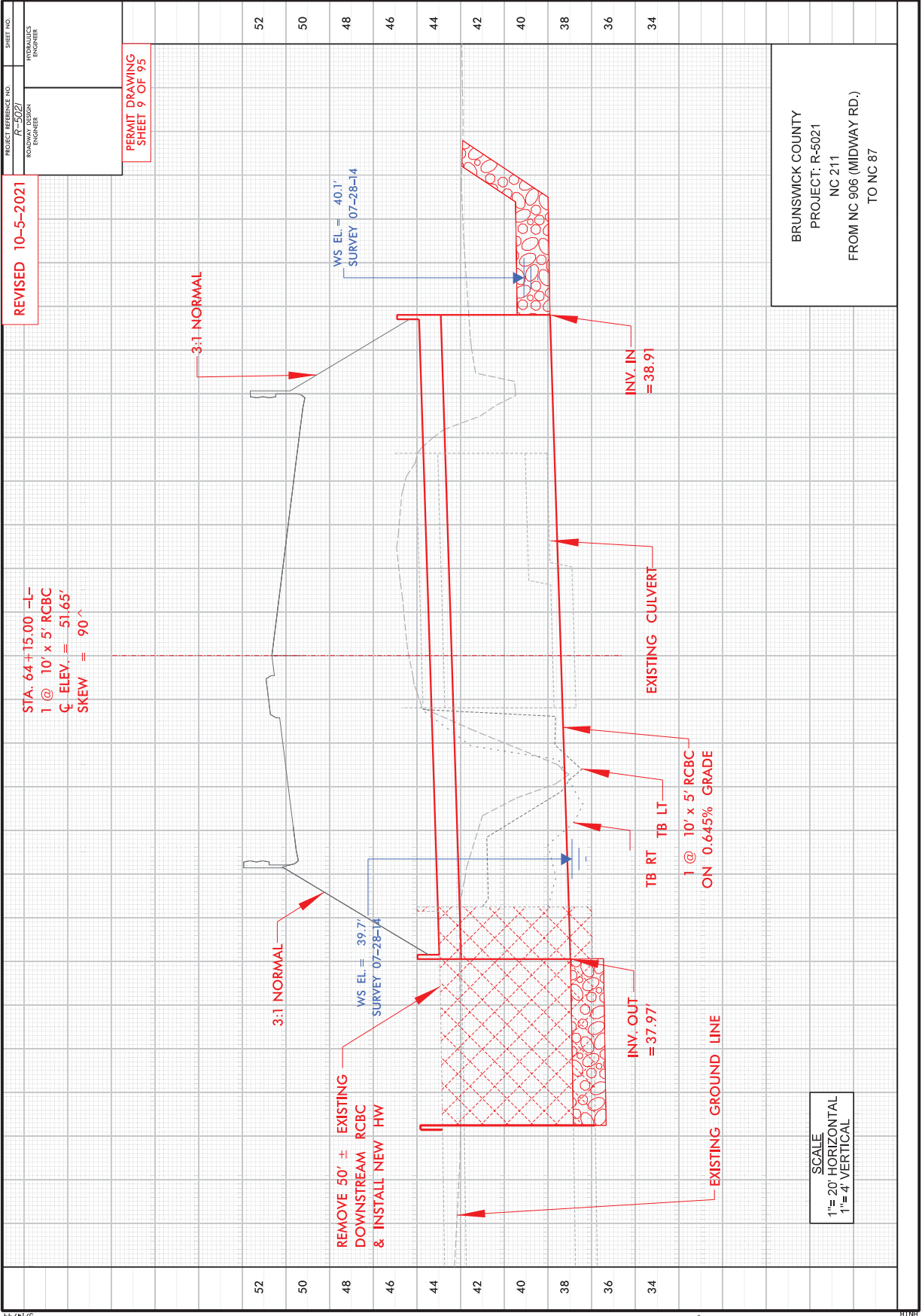
MATCH LINE YAREV STA 15+50.00
SEE SHEET 34

MATCH LINE L- STA 73+00
SEE SHEET 6

MD MANAGEMENT INC
307 PUBLIC SQUARE EAST
SUITE 100
RICHMOND, VA 23261
TEL: 804-781-1100
WWW.MDMANAGEMENT.COM

HNTB
HNTB NORTH CAROLINA, P.C.
1000 W. MARKET STREET
RICHMOND, VA 23261
TEL: 804-781-1100
WWW.HNTB.COM





5/14/99
 10/5/2021 12:21:10.DRAWING.DRAWINGS.PSH5.9 of 99.CUI.PFL.dgn

REVISED 10/05/21

WETLAND AND SURFACE WATER IMPACTS SUMMARY															
Site No.	Station (From/To)	Structure Size / Type	WETLAND IMPACTS					SURFACE WATER IMPACTS							
			Permanent Fill in Wetlands (ac)	Temp. Fill in Wetlands (ac)	Excavation in Wetlands (ac)	Mechanized Clearing in Wetlands (ac)	Hand Clearing in Wetlands (ac)	Permanent SW Impacts (ac)	Temp. SW Impacts (ac)	Existing Channel Impacts Permanent (ft)	Existing Channel Impacts Temp. (ft)	Natural Stream Design (ft)			
1	-L- 55+39 - 57+85 RT	4' Base Ditch			0.172						0.290				
2	-L- 57+22 - 75+36 RT	Roadway Fill	0.316												
3	-YAREV- 11+24 - 15+52 LT	Roadway Fill	0.906			0.044									
4	-YREV- 38+47 - 48+34 LT	15' & 48" RCP / Roadway Fill			0.211	0.068									
4	-L- 81+78 - 86+05 RT	Special Cut Ditch													
5	-L- 85+22 - 86+44 LT	15" RCP / Roadway Fill	0.076			0.015									
5	-L- 83+55 - 83+84 LT	2 @ 8' X 6' RCBC									0.021	0.002	82	14	
5	-YB- 16+72 - 19+00 LT	Roadway Fill	0.084			0.025									
6	-L- 100+43 - 100+73 LT	36" RCP									0.014	0.001	91	9	
6	-L- 100+78 - 103+67 LT	Roadway Fill	0.149			0.032									
7	-L- 106+05 - 107+32 LT	36" RCP									0.414	0.003	133	13	
9	-L- 113+86 - 126+79 LT	Roadway Fill	1.186			0.147									
10	-L- 126+92 - 144+52 LT	Roadway Fill	0.985			0.271									
11	-L- 200+46 - 205+16 RT	Roadway Fill	0.101			0.063									
12	-L- 211+66 - 214+04 LT	60" X 38" HERCP / Roadway Fill (Pond)									0.237	0.142			
13	-L- 216+73 - 218+28 LT	54" RCP									0.031	0.003	153	19	
13	-L- 216+76 - 217+92 LT	Roadway Fill / 4' Lateral Base Ditch	0.039			0.024							16	15	
14	-L- 216+53 - 216+82 RT	54" RCP									0.005	0.006			
14	-L- 215+99 - 217+82 RT	Roadway Fill / Lateral 'V' Ditch	0.046			0.007									
15	-L- 222+97 - 223+54 LT	Roadway Fill / 'V' Ditch	0.024			0.020									
15	-L- 222+97 - 223+54 LT	Indirect Impacts - Total Take	0.040												
16	-L- 225+77 - 226+44 LT	2 @ 9' X 8' RCBC									0.037	0.004	150	10	
16	-L- 225+21 - 227+48 LT	Roadway Fill / Var. Width Base Ditch	0.303			0.008									
17	-L- 225+59 - 225+92 RT	2 @ 9' X 8' RCBC									0.029	0.003	59	10	
17	-L- 222+60 - 226+73 RT	4' Base Ditch	0.015			0.131									
SUBTOTALS*:			4.270		0.567	0.708					1.078	0.164	684	90	

NC DEPARTMENT OF TRANSPORTATION
 DIVISION OF HIGHWAYS
 10/5/2021
 Brunswick County
 R-5021

NOTES:
 Site 1: The Total Site Impact of 0.17 acres includes 0.10 acres of drainage effect from ditching.
 Site 8: This Site has been eliminated.
 Site 15: Total Site Impact of 0.08 acres includes 0.04 acres of direct impacts and 0.04 acres of indirect impacts. Total Take impacts 1:1 mitigation.

REVISED 10/05/21

WETLAND AND SURFACE WATER IMPACTS SUMMARY															
Site No.	Station (From/To)	Structure Size / Type	WETLAND IMPACTS				SURFACE WATER IMPACTS								
			Permanent Fill In Wetlands (ac)	Temp. Fill In Wetlands (ac)	Excavation in Wetlands (ac)	Mechanized Clearing in Wetlands (ac)	Hand Clearing in Wetlands (ac)	Permanent SW impacts (ac)	Temp. SW impacts (ac)	Existing Channel Impacts Permanent (ft)	Existing Channel Impacts Temp. (ft)	Natural Stream Design (ft)			
18	-L- 237+79 - 242+95 LT	Roadway Fill	0.540			0.045									
19	-L- 245+23 - 275+27 LT	Roadway Fill	5.350			0.296									
20	-L- 275+51 - 286+64 LT	Roadway Fill	2.206			0.124									
21	-L- 271+43 - 275+91 RT	4' Base Ditch			0.079	0.028									
22	-L- 278+65 - 283+16 RT	4' Base Ditch			0.087	0.037									
23	-L- 289+94 - 304+98 LT	Roadway Fill	2.564			0.168									
24	-L- 313+81 - 314+96 RT	6' Base Ditch (Pond)							0.065						
25	-L- 315+96 - 316+63 LT	2 @ 7' X 7' RCBC							0.011	0.004	85	24			
25A	-L- 316+38 - 317+38 LT	Roadway Fill							0.008		107				
26	-L- 316+52 - 317+84 RT	2 @ 7' X 7' RCBC							0.025	0.004	116	24			
42	-L- 324+23 - 324.26 LT	2' Base Ditch			0.001										
28	-L- 353+34 - 353+73 RT	Special 'V' Ditch / 3' base Ditch	0.006			0.040									
29	-L- 366+77 - 369+06 LT	Roadway Fill	0.277			0.069		0.019							
30	-L- 370+03 - 375+93 LT	Roadway Fill / Var. Base Ditch	0.492			0.071									
31	-L- 369+37 - 369+59 RT	Bank Stabilization							0.001	0.004	18	29			
32	-L- 370+83 - 370+94 RT	Roadway Fill	0.001			0.001									
34	-L- 428+24 - 428+68 LT	66" RCP													
35	-YB- 11+41 - 13+72 LT	Roadway Fill													
36	-YREV- 9+47 - 9+77 RT	3' Base Ditch			0.003										
37	-Y14D- 19+91 - 20+15 LT	Special 'V' Ditch													
37	-Y14A- 52+57 - 59+22 RT	2 @ 60" RCP EXT. / Roadway Fill	0.222			0.048									
38	-Y14A- 55+80 - 66+12 LT	2 @ 60" RCP EXT. / Roadway Fill	0.058		0.009	0.029									
39	-Y14A- 64+77 - 66+24 RT	Roadway Fill	0.009			0.021									
40	-Y22- 23+04 - 23+21 RT	54" RCP													
41	-Y22- 23+17 - 23+32 LT														
42	-L- 324+23 - 324+26 LT	2' Base Ditch			0.001										
SUBTOTALS*			11.725		0.180	0.977	0.019	0.019	0.828	0.041	465	105			
FINAL TOTALS*			15.995		0.747	1.685	0.019	0.019	1.905	0.204	1149	195			

NOTES: Site 27: This Site has been eliminated.
Site 33: This Site has been eliminated.

NC DEPARTMENT OF TRANSPORTATION
DIVISION OF HIGHWAYS
10/5/2021
Brunswick County
R-5021

County : Brunswick

Line #	Item Number	Sec #	Description	Quantity	Unit Cost	Amount
ROADWAY ITEMS						
0001	0000100000-N	800	MOBILIZATION	Lump Sum	L.S.	
0002	0000400000-N	801	CONSTRUCTION SURVEYING	Lump Sum	L.S.	
0003	0000700000-N	SP	FIELD OFFICE	Lump Sum	L.S.	
0004	0001000000-E	200	CLEARING & GRUBBING .. ACRE(S)	Lump Sum	L.S.	
0005	0008000000-E	200	SUPPLEMENTARY CLEARING & GRUB- BING	3 ACR		
0006	0015000000-N	205	SEALING ABANDONED WELLS	8 EA		
0007	0022000000-E	225	UNCLASSIFIED EXCAVATION	90,000 CY		
0008	0028000000-N	SP	TYPE I STANDARD APPROACH FILL STATION ***** (369+42.00 -L- EBL)	Lump Sum	L.S.	
0009	0028000000-N	SP	TYPE I STANDARD APPROACH FILL STATION ***** (369+42.00 -L- WBL)	Lump Sum	L.S.	
0010	0028000000-N	SP	TYPE I STANDARD APPROACH FILL STATION ***** (390+15.00 -L- LT)	Lump Sum	L.S.	
0011	0028000000-N	SP	TYPE I STANDARD APPROACH FILL STATION ***** (390+15.00 -L- RT)	Lump Sum	L.S.	
0012	0029000000-N	SP	TYPE III REINFORCED APPROACH FILL, STATION ***** (31+30.81 -Y REV-)	Lump Sum	L.S.	
0013	0029000000-N	SP	TYPE III REINFORCED APPROACH FILL, STATION ***** (39+52.37 -Y14A-)	Lump Sum	L.S.	
0014	0036000000-E	225	UNDERCUT EXCAVATION	55,000 CY		
0015	0106000000-E	230	BORROW EXCAVATION	1,200,000 CY		
0016	0134000000-E	240	DRAINAGE DITCH EXCAVATION	62,215 CY		
0017	0156000000-E	250	REMOVAL OF EXISTING ASPHALT PAVEMENT	19,500 SY		

County : Brunswick

Line #	Item Number	Sec #	Description	Quantity	Unit Cost	Amount
0018	0177000000-E	250	BREAKING OF EXISTING ASPHALT PAVEMENT	63,810 SY		
0019	0192000000-N	260	PROOF ROLLING	100 HR		
0020	0195000000-E	265	SELECT GRANULAR MATERIAL	54,200 CY		
0021	0196000000-E	270	GEOTEXTILE FOR SOIL STABILIZATION	40,190 SY		
0022	0199000000-E	SP	TEMPORARY SHORING	33,000 SF		
0023	0248000000-N	SP	GENERIC GRADING ITEM DE-WATERING	Lump Sum	L.S.	
0024	0255000000-E	SP	GENERIC GRADING ITEM HAULING AND DISPOSAL OF PETROLEUM CONTAMINATED SOIL	50 TON		
0025	0318000000-E	300	FOUNDATION CONDITIONING MATERIAL, MINOR STRUCTURES	7,378 TON		
0026	0320000000-E	300	FOUNDATION CONDITIONING GEOTEXTILE	63,188 SY		
0027	0335000000-E	305	*** DRAINAGE PIPE (54")	288 LF		
0028	0335200000-E	305	15" DRAINAGE PIPE	1,480 LF		
0029	0335300000-E	305	18" DRAINAGE PIPE	1,344 LF		
0030	0335400000-E	305	24" DRAINAGE PIPE	752 LF		
0031	0335500000-E	305	30" DRAINAGE PIPE	520 LF		
0032	0335600000-E	305	36" DRAINAGE PIPE	604 LF		
0033	0335800000-E	305	48" DRAINAGE PIPE	636 LF		
0034	0448000000-E	310	***** RC PIPE CULVERTS, CLASS IV (12")	76 LF		
0035	0448000000-E	310	***** RC PIPE CULVERTS, CLASS IV (48")	1,046 LF		

County : Brunswick

Line #	Item Number	Sec #	Description	Quantity	Unit Cost	Amount
0036	0448000000-E	310	***** RC PIPE CULVERTS, CLASS IV (54")	488	LF	
0037	0448000000-E	310	***** RC PIPE CULVERTS, CLASS IV (60")	1,240	LF	
0038	0448000000-E	310	***** RC PIPE CULVERTS, CLASS IV (66")	408	LF	
0039	0448200000-E	310	15" RC PIPE CULVERTS, CLASS IV	13,444	LF	
0040	0448300000-E	310	18" RC PIPE CULVERTS, CLASS IV	2,646	LF	
0041	0448400000-E	310	24" RC PIPE CULVERTS, CLASS IV	1,712	LF	
0042	0448500000-E	310	30" RC PIPE CULVERTS, CLASS IV	4,372	LF	
0043	0448600000-E	310	36" RC PIPE CULVERTS, CLASS IV	3,400	LF	
0044	0448700000-E	310	42" RC PIPE CULVERTS, CLASS IV	1,144	LF	
0045	0546000000-E	310	*** CAA PIPE CULVERTS, ***** THICK (54", 0.109")	84	LF	
0046	0582000000-E	310	15" CS PIPE CULVERTS, 0.064" THICK	632	LF	
0047	0588000000-E	310	18" CS PIPE CULVERTS, 0.064" THICK	52	LF	
0048	0636000000-E	310	*** CS PIPE ELBOWS, ***** THICK (15", 0.064")	30	EA	
0049	0636000000-E	310	*** CS PIPE ELBOWS, ***** THICK (18", 0.064")	2	EA	
0050	0986000000-E	SP	GENERIC PIPE ITEM 18" DUCTILE IRON PIPE	112	LF	
0051	0986000000-E	SP	GENERIC PIPE ITEM 24" DUCTILE IRON PIPE	202	LF	

County : Brunswick

Line #	Item Number	Sec #	Description	Quantity	Unit Cost	Amount
0052	0986000000-E	SP	GENERIC PIPE ITEM 30" DUCTILE IRON PIPE	104 LF		
0053	0986000000-E	SP	GENERIC PIPE ITEM 57" X 38" CORRUGATED ALUMINUM ALLOY PIPE ARCH CULVERT 0.109" THICK	348 LF		
0054	0986000000-E	SP	GENERIC PIPE ITEM 60" X 38" HORIZONTAL ELLIPTI- CAL RCP-IV	452 LF		
0055	0992000000-E	SP	GENERIC PIPE ITEM 18" DUCTILE IRON PIPE ELBOW	2 EA		
0056	0992000000-E	SP	GENERIC PIPE ITEM 24" DUCTILE IRON PIPE ELBOW	4 EA		
0057	0992000000-E	SP	GENERIC PIPE ITEM 30" DUCTILE IRON PIPE ELBOW	2 EA		
0058	0995000000-E	340	PIPE REMOVAL	12,322 LF		
0059	0996000000-N	350	PIPE CLEAN OUT	5 EA		
0060	1011000000-N	500	FINE GRADING	Lump Sum	L.S.	
0061	1099500000-E	505	SHALLOW UNDERCUT	1,100 CY		
0062	1099700000-E	505	CLASS IV SUBGRADE STABILIZA- TION	2,000 TON		
0063	1111000000-E	SP	CLASS IV AGGREGATE STABILIZA- TION	90,000 TON		
0064	1121000000-E	520	AGGREGATE BASE COURSE	28,150 TON		
0065	1220000000-E	545	INCIDENTAL STONE BASE	5,725 TON		
0066	1275000000-E	600	PRIME COAT	21,954 GAL		
0067	1330000000-E	607	INCIDENTAL MILLING	8,000 SY		
0068	1491000000-E	610	ASPHALT CONC BASE COURSE, TYPE B25.0C	180,000 TON		

County : Brunswick

Line #	Item Number	Sec #	Description	Quantity	Unit Cost	Amount
0069	1503000000-E	610	ASPHALT CONC INTERMEDIATE COURSE, TYPE I19.0C	115,500 TON		
0070	1519000000-E	610	ASPHALT CONC SURFACE COURSE, TYPE S9.5B	25,900 TON		
0071	1523000000-E	610	ASPHALT CONC SURFACE COURSE, TYPE S9.5C	65,100 TON		
0072	1575000000-E	620	ASPHALT BINDER FOR PLANT MIX	19,300 TON		
0073	1693000000-E	654	ASPHALT PLANT MIX, PAVEMENT REPAIR	5,650 TON		
0074	2022000000-E	815	SUBDRAIN EXCAVATION	2,184 CY		
0075	2026000000-E	815	GEOTEXTILE FOR SUBSURFACE DRAINS	6,500 SY		
0076	2036000000-E	815	SUBDRAIN COARSE AGGREGATE	1,092 CY		
0077	2044000000-E	815	6" PERFORATED SUBDRAIN PIPE	6,500 LF		
0078	2070000000-N	815	SUBDRAIN PIPE OUTLET	13 EA		
0079	2077000000-E	815	6" OUTLET PIPE	78 LF		
0080	2190000000-N	828	TEMPORARY STEEL PLATE COVERS FOR MASONRY DRAINAGE STRUCTURE	75 EA		
0081	2209000000-E	838	ENDWALLS	133.9 CY		
0082	2220000000-E	838	REINFORCED ENDWALLS	62.69 CY		
0083	2253000000-E	840	PIPE COLLARS	2.557 CY		
0084	2275000000-E	SP	FLOWABLE FILL	129 CY		
0085	2286000000-N	840	MASONRY DRAINAGE STRUCTURES	388 EA		
0086	2297000000-E	840	MASONRY DRAINAGE STRUCTURES	80.011 CY		
0087	2308000000-E	840	MASONRY DRAINAGE STRUCTURES	146.9 LF		

County : Brunswick

Line #	Item Number	Sec #	Description	Quantity	Unit Cost	Amount
0088	2355000000-N	840	FRAME WITH GRATE, STD 840.29	1 EA		
0089	2364000000-N	840	FRAME WITH TWO GRATES, STD 840.16	46 EA		
0090	2364200000-N	840	FRAME WITH TWO GRATES, STD 840.20	125 EA		
0091	2365000000-N	840	FRAME WITH TWO GRATES, STD 840.22	7 EA		
0092	2366000000-N	840	FRAME WITH TWO GRATES, STD 840.24	6 EA		
0093	2367000000-N	840	FRAME WITH TWO GRATES, STD 840.29	10 EA		
0094	2374000000-N	840	FRAME WITH GRATE & HOOD, STD 840.03, TYPE ** (E)	30 EA		
0095	2374000000-N	840	FRAME WITH GRATE & HOOD, STD 840.03, TYPE ** (F)	56 EA		
0096	2374000000-N	840	FRAME WITH GRATE & HOOD, STD 840.03, TYPE ** (G)	69 EA		
0097	2396000000-N	840	FRAME WITH COVER, STD 840.54	15 EA		
0098	2407000000-N	840	STEEL FRAME WITH TWO GRATES, STD 840.37	42 EA		
0099	2451000000-N	852	CONCRETE TRANSITIONAL SECTION FOR DROP INLET	97 EA		
0100	2535000000-E	846	***X *** CONCRETE CURB (8" X 18")	1,580 LF		
0101	2538000000-E	846	***_*** CONCRETE CURB & GUTTER (2'-9")	10,300 LF		
0102	2542000000-E	846	1'-6" CONCRETE CURB & GUTTER	46,660 LF		
0103	2549000000-E	846	2'-6" CONCRETE CURB & GUTTER	26,060 LF		
0104	2556000000-E	846	SHOULDER BERM GUTTER	8,330 LF		

County : Brunswick

Line #	Item Number	Sec #	Description	Quantity	Unit Cost	Amount
0105	2577000000-E	846	CONCRETE EXPRESSWAY GUTTER	340	LF	
0106	2591000000-E	848	4" CONCRETE SIDEWALK	2,870	SY	
0107	2605000000-N	848	CONCRETE CURB RAMPS	37	EA	
0108	2612000000-E	848	6" CONCRETE DRIVEWAY	280	SY	
0109	2619000000-E	850	4" CONCRETE PAVED DITCH	110	SY	
0110	2655000000-E	852	5" MONOLITHIC CONCRETE ISLANDS (KEYED IN)	15,845	SY	
0111	2724000000-E	857	PRECAST REINFORCED CONCRETE BARRIER, SINGLE FACED	350	LF	
0112	2759000000-N	SP	GENERIC PAVING ITEM EMERGENCY VEHICLE ACCESS FOR CONCRETE ISLAND	2	EA	
0113	2800000000-N	858	ADJUSTMENT OF CATCH BASINS	14	EA	
0114	2815000000-N	858	ADJUSTMENT OF DROP INLETS	1	EA	
0115	2830000000-N	858	ADJUSTMENT OF MANHOLES	15	EA	
0116	2845000000-N	858	ADJUSTMENT OF METER BOXES OR VALVE BOXES	1	EA	
0117	2995000000-N	SP	GENERIC DRAINAGE ITEM CONVERT EXISTING CATCH BASIN TO TRAFFIC BEARING JUNCTION BOX	1	EA	
0118	2995000000-N	SP	GENERIC DRAINAGE ITEM CONVERT EXISTING DROP INLET TO TRAFFIC BEARING JUNCTION BOX	1	EA	
0119	3001000000-N	SP	IMPACT ATTENUATOR UNITS, TYPE TL-3	3	EA	
0120	3030000000-E	862	STEEL BEAM GUARDRAIL	19,725	LF	
0121	3045000000-E	862	STEEL BEAM GUARDRAIL, SHOP CURVED	1,462.5	LF	

County : Brunswick

Line #	Item Number	Sec #	Description	Quantity	Unit Cost	Amount
0122	3145000000-E	862	EXTRA LENGTH GUARDRAIL POST (**' STEEL) (8')	25 EA		
0123	3150000000-N	862	ADDITIONAL GUARDRAIL POSTS	165 EA		
0124	3195000000-N	862	GUARDRAIL END UNITS, TYPE AT-1	17 EA		
0125	3210000000-N	862	GUARDRAIL END UNITS, TYPE CAT-1	29 EA		
0126	3215000000-N	SP	GUARDRAIL ANCHOR UNITS, TYPE III	16 EA		
0127	3287000000-N	SP	GUARDRAIL END UNITS, TYPE TL-3	26 EA		
0128	3288000000-N	SP	GUARDRAIL END UNITS, TYPE TL-2	3 EA		
0129	3317000000-N	SP	GUARDRAIL ANCHOR UNITS, TYPE B-77	13 EA		
0130	3360000000-E	863	REMOVE EXISTING GUARDRAIL	5,600 LF		
0131	3380000000-E	862	TEMPORARY STEEL BEAM GUARDRAIL	3,150 LF		
0132	3382000000-E	862	TEMPORARY STEEL BEAM GUARDRAIL (SHOP CURVED)	637.5 LF		
0133	3387000000-N	SP	TEMPORARY GUARDRAIL ANCHOR UNITS, TYPE ***** (B-77)	8 EA		
0134	3389150000-N	SP	TEMPORARY GUARDRAIL END UNITS, TYPE ***** (AT-1)	10 EA		
0135	3389150000-N	SP	TEMPORARY GUARDRAIL END UNITS, TYPE ***** (TL-3)	20 EA		
0136	3503000000-E	866	WOVEN WIRE FENCE, 47" FABRIC	61,000 LF		
0137	3509000000-E	866	4" TIMBER FENCE POSTS, 7'-6" LONG	3,699 EA		
0138	3515000000-E	866	5" TIMBER FENCE POSTS, 8'-0" LONG	1,213 EA		

County : Brunswick

Line #	Item Number	Sec #	Description	Quantity	Unit Cost	Amount
0139	3628000000-E	876	RIP RAP, CLASS I	3,565	TON	
0140	3642000000-E	876	RIP RAP, CLASS A	40	TON	
0141	3649000000-E	876	RIP RAP, CLASS B	915	TON	
0142	3656000000-E	876	GEOTEXTILE FOR DRAINAGE	13,555	SY	
0143	3659000000-N	873	PREFORMED SCOUR HOLES WITH LEVEL SPREADER APRON	3	EA	
0144	4048000000-E	902	REINFORCED CONCRETE SIGN FOUN- DATIONS	14	CY	
0145	4054000000-E	902	PLAIN CONCRETE SIGN FOUNDA- TIONS	1	CY	
0146	4057000000-E	SP	OVERHEAD FOOTING	16	CY	
0147	4060000000-E	903	SUPPORTS, BREAKAWAY STEEL BEAM	15,793	LB	
0148	4066000000-E	903	SUPPORTS, SIMPLE STEEL BEAM	1,958	LB	
0149	4072000000-E	903	SUPPORTS, 3-LB STEEL U-CHANNEL	7,639	LF	
0150	4082000000-E	903	SUPPORTS, WOOD	58	LF	
0151	4096000000-N	904	SIGN ERECTION, TYPE D	21	EA	
0152	4102000000-N	904	SIGN ERECTION, TYPE E	338	EA	
0153	4108000000-N	904	SIGN ERECTION, TYPE F	76	EA	
0154	4110000000-N	904	SIGN ERECTION, TYPE *** (GROUND MOUNTED) (A)	18	EA	
0155	4110000000-N	904	SIGN ERECTION, TYPE *** (GROUND MOUNTED) (B)	1	EA	
0156	4116100000-N	904	SIGN ERECTION, RELOCATE TYPE **** (GROUND MOUNTED) (A)	1	EA	

County : Brunswick

Line #	Item Number	Sec #	Description	Quantity	Unit Cost	Amount
0157	4116100000-N	904	SIGN ERECTION, RELOCATE TYPE **** (GROUND MOUNTED) (B)	1 EA		
0158	4116100000-N	904	SIGN ERECTION, RELOCATE TYPE **** (GROUND MOUNTED) (D)	12 EA		
0159	4138000000-N	907	DISPOSAL OF SUPPORT, STEEL BEAM	2 EA		
0160	4141000000-N	907	DISPOSAL OF SUPPORT, WOOD	2 EA		
0161	4152000000-N	907	DISPOSAL OF SIGN SYSTEM, STEEL BEAM	4 EA		
0162	4155000000-N	907	DISPOSAL OF SIGN SYSTEM, U- CHANNEL	161 EA		
0163	4192000000-N	907	DISPOSAL OF SUPPORT, U-CHANNEL	17 EA		
0164	4360000000-N	SP	GENERIC SIGNING ITEM VERTICAL PANEL, TYPE 3 OBJECT MARKERS – OM3-C	19 EA		
0165	4360000000-N	SP	GENERIC SIGNING ITEM VERTICAL PANEL, TYPE 3 OBJECT MARKERS – OM3-L	44 EA		
0166	4400000000-E	1110	WORK ZONE SIGNS (STATIONARY)	2,392 SF		
0167	4405000000-E	1110	WORK ZONE SIGNS (PORTABLE)	1,217 SF		
0168	4410000000-E	1110	WORK ZONE SIGNS (BARRICADE MOUNTED)	1,589 SF		
0169	4415000000-N	1115	FLASHING ARROW BOARD	8 EA		
0170	4420000000-N	1120	PORTABLE CHANGEABLE MESSAGE SIGN	7 EA		
0171	4422000000-N	1120	PORTABLE CHANGEABLE MESSAGE SIGN (SHORT TERM)	105 DAY		
0172	4430000000-N	1130	DRUMS	1,990 EA		
0173	4435000000-N	1135	CONES	50 EA		

County : Brunswick

Line #	Item Number	Sec #	Description	Quantity	Unit Cost	Amount
0174	4445000000-E	1145	BARRICADES (TYPE III)	1,016	LF	
0175	4447000000-E	SP	PEDESTRIAN CHANNELIZING DEVICES	10	LF	
0176	4455000000-N	1150	FLAGGER	990	DAY	
0177	4465000000-N	1160	TEMPORARY CRASH CUSHIONS	25	EA	
0178	4470000000-N	1160	REMOVE & RESET TEMPORARY CRASH CUSHION	9	EA	
0179	4480000000-N	1165	TMA	4	EA	
0180	4485000000-E	1170	PORTABLE CONCRETE BARRIER	4,090	LF	
0181	4490000000-E	1170	PORTABLE CONCRETE BARRIER (ANCHORED)	2,442	LF	
0182	4500000000-E	1170	REMOVE AND RESET PORTABLE CONCRETE BARRIER	1,072	LF	
0183	4505000000-E	1170	REMOVE & RESET PORTABLE CONCRETE BARRIER (ANCHORED)	404	LF	
0184	4507000000-E	1170	WATER FILLED BARRIER	300	LF	
0185	4510000000-N	1190	LAW ENFORCEMENT	2,640	HR	
0186	4516000000-N	1180	SKINNY DRUM	438	EA	
0187	4600000000-N	SP	GENERIC TRAFFIC CONTROL ITEM AUDIBLE WARNING DEVICES	1	EA	
0188	4600000000-N	SP	GENERIC TRAFFIC CONTROL ITEM TEMPORARY CURB RAMPS	1	EA	
0189	4650000000-N	1251	TEMPORARY RAISED PAVEMENT MARKERS	8,796	EA	
0190	4685000000-E	1205	THERMOPLASTIC PAVEMENT MARKING LINES (4", 90 MILS)	203,143	LF	
0191	4695000000-E	1205	THERMOPLASTIC PAVEMENT MARKING LINES (8", 90 MILS)	17,367	LF	

County : Brunswick

Line #	Item Number	Sec #	Description	Quantity	Unit Cost	Amount
0192	4700000000-E	1205	THERMOPLASTIC PAVEMENT MARKING LINES (12", 90 MILS)	5,668 LF		
0193	4720000000-E	1205	THERMOPLASTIC PAVEMENT MARKING CHARACTER (90 MILS)	48 EA		
0194	4725000000-E	1205	THERMOPLASTIC PAVEMENT MARKING SYMBOL (90 MILS)	584 EA		
0195	4810000000-E	1205	PAINT PAVEMENT MARKING LINES (4")	1,326,877 LF		
0196	4820000000-E	1205	PAINT PAVEMENT MARKING LINES (8")	104,122 LF		
0197	4825000000-E	1205	PAINT PAVEMENT MARKING LINES (12")	9,702 LF		
0198	4835000000-E	1205	PAINT PAVEMENT MARKING LINES (24")	13,705 LF		
0199	4845000000-N	1205	PAINT PAVEMENT MARKING SYMBOL	1,757 EA		
0200	4850000000-E	1205	REMOVAL OF PAVEMENT MARKING LINES (4")	85,561 LF		
0201	4860000000-E	1205	REMOVAL OF PAVEMENT MARKING LINES (8")	8,000 LF		
0202	4865000000-E	1205	REMOVAL OF PAVEMENT MARKING LINES (12")	1,000 LF		
0203	4870000000-E	1205	REMOVAL OF PAVEMENT MARKING LINES (24")	2,084 LF		
0204	4875000000-N	1205	REMOVAL OF PAVEMENT MARKING SYMBOLS & CHARACTERS	301 EA		
0205	4890000000-E	SP	GENERIC PAVEMENT MARKING ITEM POLYUREA PAVEMENT MARKING LINES, 4" 20 MILS (STANDARD GLASS BEADS)	2,979 LF		
0206	4890000000-E	SP	GENERIC PAVEMENT MARKING ITEM POLYUREA PAVEMENT MARKING LINES, 8" 20 MILS (STANDARD GLASS BEADS)	245 LF		

County : Brunswick

Line #	Item Number	Sec #	Description	Quantity	Unit Cost	Amount
0207	4891000000-E	1205	GENERIC PAVEMENT MARKING ITEM THERMOPLASTIC PAVEMENT MARKING LINES (24", 90 MILS)	3,137 LF		
0208	4895000000-N	SP	GENERIC PAVEMENT MARKING ITEM NON-CAST IRON SNOWPLOWABLE PAVEMENT MARKER	3,151 EA		
0209	4900000000-N	1251	PERMANENT RAISED PAVEMENT MARKERS	95 EA		
0210	5255000000-N	1413	PORTABLE LIGHTING	Lump Sum	L.S.	
0211	5325000000-E	1510	*** WATER LINE (18")	8,603 LF		
0212	5325400000-E	1510	4" WATER LINE	10 LF		
0213	5325600000-E	1510	6" WATER LINE	4,699 LF		
0214	5325800000-E	1510	8" WATER LINE	2,843 LF		
0215	5326000000-E	1510	10" WATER LINE	406 LF		
0216	5326200000-E	1510	12" WATER LINE	3,172 LF		
0217	5326600000-E	1510	16" WATER LINE	2,275 LF		
0218	5327400000-E	1510	24" WATER LINE	11,108 LF		
0219	5329000000-E	1510	DUCTILE IRON WATER PIPE FITTINGS	107,464 LB		
0220	5534000000-E	1515	*** VALVE (18")	6 EA		
0221	5538000000-E	1515	4" VALVE	2 EA		
0222	5540000000-E	1515	6" VALVE	35 EA		
0223	5546000000-E	1515	8" VALVE	9 EA		
0224	5552000000-E	1515	10" VALVE	3 EA		
0225	5558000000-E	1515	12" VALVE	9 EA		

County : Brunswick

Line #	Item Number	Sec #	Description	Quantity	Unit Cost	Amount
0226	5558600000-E	1515	16" VALVE	6 EA		
0227	5559400000-E	1515	24" VALVE	12 EA		
0228	5571000000-E	1515	*** TAPPING SLEEVE & VALVE (2-1/2")	1 EA		
0229	5571000000-E	1515	*** TAPPING SLEEVE & VALVE (3")	3 EA		
0230	5571400000-E	1515	4" TAPPING SLEEVE & VALVE	1 EA		
0231	5571800000-E	1515	8" TAPPING SLEEVE & VALVE	1 EA		
0232	5572200000-E	1515	12" TAPPING SLEEVE & VALVE	1 EA		
0233	5589200000-E	1515	2" AIR RELEASE VALVE	10 EA		
0234	5606600000-E	1515	6" BLOW OFF	6 EA		
0235	5643000000-E	1515	*** WATER METER (1")	3 EA		
0236	5643000000-E	1515	*** WATER METER (5/8")	2 EA		
0237	5643200000-E	1515	2" WATER METER	5 EA		
0238	5648000000-N	1515	RELOCATE WATER METER	53 EA		
0239	5649000000-N	1515	RECONNECT WATER METER	10 EA		
0240	5653210000-E	1515	RELOCATE 2" DCV BACKFLOW PRE- VENTION ASSEMBLY	2 EA		
0241	5656100000-E	1515	RELOCATE *** RPZ BACKFLOW PRE- VENTION ASSEMBLY (1")	3 EA		
0242	5656100000-E	1515	RELOCATE *** RPZ BACKFLOW PRE- VENTION ASSEMBLY (3/4")	33 EA		
0243	5656210000-E	1515	RELOCATE 2" RPZ BACKFLOW PRE- VENTION ASSEMBLY	1 EA		

County : Brunswick

Line #	Item Number	Sec #	Description	Quantity	Unit Cost	Amount
0244	5666000000-N	1515	FIRE HYDRANT	21	EA	
0245	5672000000-N	1515	RELOCATE FIRE HYDRANT	4	EA	
0246	5673000000-E	1515	FIRE HYDRANT LEG	324	LF	
0247	5678600000-E	1515	8" LINE STOP	5	EA	
0248	5679000000-E	1515	12" LINE STOP	5	EA	
0249	5679200000-E	1515	16" LINE STOP	6	EA	
0250	5679600000-E	1515	24" LINE STOP	5	EA	
0251	5686000000-E	1515	*** WATER SERVICE LINE (2")	171	LF	
0252	5686000000-E	1515	*** WATER SERVICE LINE (2-1/2")	35	LF	
0253	5686500000-E	1515	WATER SERVICE LINE	1,946	LF	
0254	5691000000-E	1520	*** SANITARY GRAVITY SEWER (8")	5,592	LF	
0255	5709000000-E	1520	*** FORCE MAIN SEWER (2")	69	LF	
0256	5709200000-E	1520	4" FORCE MAIN SEWER	60	LF	
0257	5709300000-E	1520	6" FORCE MAIN SEWER	2,053	LF	
0258	5709400000-E	1520	8" FORCE MAIN SEWER	2,627	LF	
0259	5709600000-E	1520	12" FORCE MAIN SEWER	605	LF	
0260	5709700000-E	1520	16" FORCE MAIN SEWER	20,555	LF	
0262	5709900000-E	1520	24" FORCE MAIN SEWER	34,740	LF	
0263	5769000000-E	1520	DUCTILE IRON SEWER PIPE FITTINGS	87,030	LB	
0264	5775000000-E	1525	4' DIA UTILITY MANHOLE	35	EA	

County : Brunswick

Line #	Item Number	Sec #	Description	Quantity	Unit Cost	Amount
0265	5781000000-E	1525	UTILITY MANHOLE WALL 4' DIA	166		LF
0266	5798000000-E	1530	ABANDON *** UTILITY PIPE (36")	180		LF
0267	5798000000-E	1530	ABANDON *** UTILITY PIPE (4")	190		LF
0268	5800000000-E	1530	ABANDON 6" UTILITY PIPE	9,026		LF
0269	5801000000-E	1530	ABANDON 8" UTILITY PIPE	14,328		LF
0270	5802000000-E	1530	ABANDON 10" UTILITY PIPE	170		LF
0271	5804000000-E	1530	ABANDON 12" UTILITY PIPE	3,573		LF
0272	5810000000-E	1530	ABANDON 16" UTILITY PIPE	53,607		LF
0273	5811000000-E	1530	ABANDON 18" UTILITY PIPE	390		LF
0274	5813000000-E	1530	ABANDON 24" UTILITY PIPE	19,242		LF
0275	5814000000-E	1530	ABANDON 30" UTILITY PIPE	65		LF
0276	5815000000-N	1530	REMOVE WATER METER	8		EA
0277	5815500000-N	1530	REMOVE FIRE HYDRANT	9		EA
0278	5828000000-N	1530	REMOVE UTILITY MANHOLE	35		EA
0279	5835000000-E	1540	*** ENCASEMENT PIPE (14")	139		LF
0280	5835000000-E	1540	*** ENCASEMENT PIPE (32")	521		LF
0281	5835000000-E	1540	*** ENCASEMENT PIPE (48")	743		LF
0282	5835700000-E	1540	16" ENCASEMENT PIPE	140		LF
0283	5835900000-E	1540	20" ENCASEMENT PIPE	165		LF
0284	5836000000-E	1540	24" ENCASEMENT PIPE	330		LF

County : Brunswick

Line #	Item Number	Sec #	Description	Quantity	Unit Cost	Amount
0285	5872500000-E	1550	BORE AND JACK OF *** (14")	139 LF		
0286	5872500000-E	1550	BORE AND JACK OF *** (16")	120 LF		
0287	5872500000-E	1550	BORE AND JACK OF *** (20")	75 LF		
0288	5872500000-E	1550	BORE AND JACK OF *** (24")	170 LF		
0289	5872500000-E	1550	BORE AND JACK OF *** (32")	235 LF		
0290	5872500000-E	1550	BORE AND JACK OF *** (48")	271 LF		
0291	5872600000-E	1550	DIRECTIONAL DRILLING OF *** (12")	935 LF		
0292	5872600000-E	1550	DIRECTIONAL DRILLING OF *** (16")	7,293 LF		
0293	5872600000-E	1550	DIRECTIONAL DRILLING OF *** (18")	6,805 LF		
0295	5872600000-E	1550	DIRECTIONAL DRILLING OF *** (24")	17,863 LF		
0296	5872600000-E	1550	DIRECTIONAL DRILLING OF *** (8")	497 LF		
0297	5882000000-N	SP	GENERIC UTILITY ITEM 12" CHECK VALVE AND VAULT	1 EA		
0298	5882000000-N	SP	GENERIC UTILITY ITEM 12" SEWER VALVE	1 EA		
0299	5882000000-N	SP	GENERIC UTILITY ITEM 16" SEWER VALVE	3 EA		
0300	5882000000-N	SP	GENERIC UTILITY ITEM 2" AIR AND VACUUM RELEASE VALVE	25 EA		
0301	5882000000-N	SP	GENERIC UTILITY ITEM 2" CHECK VALVE	4 EA		

County : Brunswick

Line #	Item Number	Sec #	Description	Quantity	Unit Cost	Amount
0302	5882000000-N	SP	GENERIC UTILITY ITEM 24" PRESSURE SUSTAINING VALVE ASSEMBLY	1 EA		
0303	5882000000-N	SP	GENERIC UTILITY ITEM 24" SEWER VALVE	30 EA		
0304	5882000000-N	SP	GENERIC UTILITY ITEM 6" SEWER VALVE	2 EA		
0305	5882000000-N	SP	GENERIC UTILITY ITEM ADJUST SANITARY SEWER CLEAN- OUT TO FINISH GRADE	4 EA		
0306	5882000000-N	SP	GENERIC UTILITY ITEM FLOW METER VAULT	1 EA		
0307	5882000000-N	SP	GENERIC UTILITY ITEM RECONNECT FORCE MAIN	12 EA		
0308	5882000000-N	SP	GENERIC UTILITY ITEM RELOCATE YARD HYDRANT	1 EA		
0309	5912000000-N	SP	GENERIC UTILITY ITEM PUMP STATION	Lump Sum	L.S.	
0310	5912000000-N	SP	GENERIC UTILITY ITEM REMOVE EXISTING PUMP STATION	Lump Sum	L.S.	
0311	6000000000-E	1605	TEMPORARY SILT FENCE	260,100 LF		
0312	6006000000-E	1610	STONE FOR EROSION CONTROL, CLASS A	2,125 TON		
0313	6009000000-E	1610	STONE FOR EROSION CONTROL, CLASS B	13,900 TON		
0314	6012000000-E	1610	SEDIMENT CONTROL STONE	10,500 TON		
0315	6015000000-E	1615	TEMPORARY MULCHING	864.5 ACR		
0316	6018000000-E	1620	SEED FOR TEMPORARY SEEDING	32,700 LB		
0317	6021000000-E	1620	FERTILIZER FOR TEMPORARY SEED- ING	164.5 TON		
0318	6024000000-E	1622	TEMPORARY SLOPE DRAINS	18,000 LF		

County : Brunswick

Line #	Item Number	Sec #	Description	Quantity	Unit Cost	Amount
0319	6029000000-E	SP	SAFETY FENCE	28,000	LF	
0320	6030000000-E	1630	SILT EXCAVATION	45,950	CY	
0321	6036000000-E	1631	MATTING FOR EROSION CONTROL	170,000	SY	
0322	6037000000-E	SP	COIR FIBER MAT	180,000	SY	
0323	6038000000-E	SP	PERMANENT SOIL REINFORCEMENT MAT	1,650	SY	
0324	6042000000-E	1632	1/4" HARDWARE CLOTH	25,980	LF	
0325	6043000000-E	SP	LOW PERMEABILITY GEOTEXTILE	1,500	SY	
0326	6045000000-E	SP	*** TEMPORARY PIPE (24")	155	LF	
0327	6045000000-E	SP	*** TEMPORARY PIPE (30")	275	LF	
0328	6048000000-E	SP	FLOATING TURBIDITY CURTAIN	555	SY	
0329	6069000000-E	1638	STILLING BASINS	135	CY	
0330	6070000000-N	1639	SPECIAL STILLING BASINS	30	EA	
0331	6071012000-E	SP	COIR FIBER WATTLE	21,055	LF	
0332	6071020000-E	SP	POLYACRYLAMIDE (PAM)	8,105	LB	
0333	6071030000-E	1640	COIR FIBER BAFFLE	10,355	LF	
0334	6071050000-E	SP	*** SKIMMER (1-1/2")	16	EA	
0335	6071050000-E	SP	*** SKIMMER (2")	5	EA	
0336	6071050000-E	SP	*** SKIMMER (2-1/2")	3	EA	
0337	6071050000-E	SP	*** SKIMMER (3")	1	EA	

County : Brunswick

Line #	Item Number	Sec #	Description	Quantity	Unit Cost	Amount
0338	6084000000-E	1660	SEEDING & MULCHING	580	ACR	
0339	6087000000-E	1660	MOWING	290	ACR	
0340	6090000000-E	1661	SEED FOR REPAIR SEEDING	8,700	LB	
0341	6093000000-E	1661	FERTILIZER FOR REPAIR SEEDING	26	TON	
0342	6096000000-E	1662	SEED FOR SUPPLEMENTAL SEEDING	12,975	LB	
0343	6108000000-E	1665	FERTILIZER TOPDRESSING	389.25	TON	
0344	6111000000-E	SP	IMPERVIOUS DIKE	2,650	LF	
0345	6114500000-N	1667	SPECIALIZED HAND MOWING	150	MHR	
0346	6117000000-N	SP	RESPONSE FOR EROSION CONTROL	150	EA	
0347	6117500000-N	SP	CONCRETE WASHOUT STRUCTURE	18	EA	
0348	6123000000-E	1670	REFORESTATION	1	ACR	
0349	6132000000-N	SP	GENERIC EROSION CONTROL ITEM FABRIC INSERT INLET PROTECTION DEVICE	20	EA	
0350	6132000000-N	SP	GENERIC EROSION CONTROL ITEM FABRIC INSERT INLET PROTECTION DEVICE CLEANOUT	60	EA	
0351	7048500000-E	1705	PEDESTRIAN SIGNAL HEAD (16", 1 SECTION W/COUNTDOWN)	12	EA	
0352	7060000000-E	1705	SIGNAL CABLE	50,280	LF	
0353	7120000000-E	1705	VEHICLE SIGNAL HEAD (12", 3 SECTION)	229	EA	
0354	7132000000-E	1705	VEHICLE SIGNAL HEAD (12", 4 SECTION)	49	EA	
0355	7144000000-E	1705	VEHICLE SIGNAL HEAD (12", 5 SECTION)	25	EA	
0356	7252000000-E	1710	MESSENGER CABLE (1/4")	920	LF	

County : Brunswick

Line #	Item Number	Sec #	Description	Quantity	Unit Cost	Amount
0357	7264000000-E	1710	MESSENGER CABLE (3/8")	6,500	LF	
0358	7279000000-E	1715	TRACER WIRE	39,410	LF	
0359	7300000000-E	1715	UNPAVED TRENCHING (***** (1, 2")	5,110	LF	
0360	7300000000-E	1715	UNPAVED TRENCHING (***** (2, 2")	18,120	LF	
0361	7300000000-E	1715	UNPAVED TRENCHING (***** (3, 2")	80	LF	
0362	7300000000-E	1715	UNPAVED TRENCHING (***** (4, 2")	170	LF	
0363	7300100000-E	1715	UNPAVED TRENCHING FOR TEMP- ORARY LEAD-IN	10	LF	
0364	7301000000-E	1715	DIRECTIONAL DRILL (***** (1, 2")	1,670	LF	
0365	7301000000-E	1715	DIRECTIONAL DRILL (***** (2, 2")	24,290	LF	
0366	7301000000-E	1715	DIRECTIONAL DRILL (***** (3, 2")	880	LF	
0367	7324000000-N	1716	JUNCTION BOX (STANDARD SIZE)	108	EA	
0368	7348000000-N	1716	JUNCTION BOX (OVER-SIZED, HEA- VY DUTY)	79	EA	
0369	7360000000-N	1720	WOOD POLE	42	EA	
0370	7372000000-N	1721	GUY ASSEMBLY	86	EA	
0371	7396000000-E	1722	1/2" RISER WITH WEATHERHEAD	10	EA	
0372	7420000000-E	1722	2" RISER WITH WEATHERHEAD	31	EA	
0373	7432000000-E	1722	2" RISER WITH HEAT SHRINK TUBING	4	EA	
0374	7444000000-E	1725	INDUCTIVE LOOP SAWCUT	15,070	LF	

County : Brunswick

Line #	Item Number	Sec #	Description	Quantity	Unit Cost	Amount
0375	7456000000-E	1726	LEAD-IN CABLE (***** (14-2)	31,000 LF		
0376	7516000000-E	1730	COMMUNICATIONS CABLE (**FIBER) (48)	41,060 LF		
0377	7528000000-E	1730	DROP CABLE	4,740 LF		
0378	7540000000-N	1731	SPLICE ENCLOSURE	21 EA		
0379	7541000000-N	1731	MODIFY SPLICE ENCLOSURE	1 EA		
0380	7552000000-N	1731	INTERCONNECT CENTER	20 EA		
0381	7566000000-N	1733	DELINEATOR MARKER	49 EA		
0382	7574550000-N	SP	FURNISH WIRELESS LIGHTNING ARRESTOR	1 EA		
0383	7575142010-N	1736	900MHZ SERIAL/ETHERNET SPREAD SPECTRUM RADIO	10 EA		
0384	7575142060-N	SP	MODIFY RADIO INSTALLATION	6 EA		
0385	7575160000-E	1734	REMOVE EXISTING COMMUNICATIONS CABLE	4,650 LF		
0386	7575200000-N	SP	GPS UNIT	2 EA		
0387	7588000000-N	SP	METAL POLE WITH SINGLE MAST ARM	29 EA		
0388	7590000000-N	SP	METAL POLE WITH DUAL MAST ARM	1 EA		
0389	7613000000-N	SP	SOIL TEST	34 EA		
0390	7614100000-E	SP	DRILLED PIER FOUNDATION	204 CY		
0391	7631000000-N	SP	MAST ARM WITH METAL POLE DE- SIGN	34 EA		
0392	7636000000-N	1745	SIGN FOR SIGNALS	106 EA		
0393	7642200000-N	1743	TYPE II PEDESTAL WITH FOUND- ATION	11 EA		

County : Brunswick

Line #	Item Number	Sec #	Description	Quantity	Unit Cost	Amount
0394	7642300000-N	1743	TYPE III PEDESTAL WITH FOUNDATION	9	EA	
0395	7684000000-N	1750	SIGNAL CABINET FOUNDATION	13	EA	
0396	7696000000-N	1751	CONTROLLERS WITH CABINET (*****) (TYPE 2070E, BASE-MOUNTED)	13	EA	
0397	7696000000-N	1751	CONTROLLERS WITH CABINET (*****) (TYPE 2070E, POLE-MOUNTED)	1	EA	
0398	7708000000-N	1751	DETECTOR CARD (*****) (2070E)	165	EA	
0399	7901000000-N	1753	CABINET BASE EXTENDER	13	EA	
0400	7948000000-N	1757	TRAFFIC SIGNAL REMOVAL	2	EA	
0401	7960000000-N	SP	METAL POLE FOUNDATION REMOVAL	19	EA	
0402	7972000000-N	SP	METAL POLE REMOVAL	19	EA	
0403	7980000000-N	SP	GENERIC SIGNAL ITEM CCTV WOOD POLE	6	EA	
0404	7980000000-N	SP	GENERIC SIGNAL ITEM CONTROLLER (TYPE 2070E)	3	EA	
0405	7980000000-N	SP	GENERIC SIGNAL ITEM DECORATIVE METAL POLE WITH SINGLE MAST ARM	4	EA	
0406	7980000000-N	SP	GENERIC SIGNAL ITEM DIGITAL CCTV CAMERA ASSEMBLY	7	EA	
0407	7980000000-N	SP	GENERIC SIGNAL ITEM DMS STRUCTURE (BACK-TO-BACK PEDESTAL)	2	EA	
0409	7980000000-N	SP	GENERIC SIGNAL ITEM ELECTRICAL SERVICE FOR ITS DEVICE	8	EA	
0410	7980000000-N	SP	GENERIC SIGNAL ITEM ETHERNET EDGE SWITCH	20	EA	

County : Brunswick

Line #	Item Number	Sec #	Description	Quantity	Unit Cost	Amount
0411	7980000000-N	SP	GENERIC SIGNAL ITEM FIELD EQUIPMENT CABINET	3 EA		
0412	7980000000-N	SP	GENERIC SIGNAL ITEM FURNISH ETHERNET EDGE SWITCH	1 EA		
0413	7980000000-N	SP	GENERIC SIGNAL ITEM JUNCTION BOX (SPECIAL OVER- SIZED HEAVY DUTY)	24 EA		
0414	7980000000-N	SP	GENERIC SIGNAL ITEM JUNCTION BOX MARKER	19 EA		
0415	7980000000-N	SP	GENERIC SIGNAL ITEM LUMINAIRE MAST ARM	2 EA		
0416	7980000000-N	SP	GENERIC SIGNAL ITEM MICROWAVE VEHICLE DETECTION SYSTEM - MULTIPLE ZONES	11 EA		
0417	7980000000-N	SP	GENERIC SIGNAL ITEM PROTECTIVE COATING FOR SINGLE MAST ARM POLE (BLACK)	4 EA		
0418	7980000000-N	SP	GENERIC SIGNAL ITEM REMOVE 900MHZ RADIO	10 EA		
0419	7980000000-N	SP	GENERIC SIGNAL ITEM WOOD PEDESTAL	3 EA		
0420	7990000000-E	SP	GENERIC SIGNAL ITEM BACK PULL FIBER OPTIC CABLE	310 LF		
0486	1891000000-E	SP	GENERIC PAVING ITEM 7" CONCRETE TRUCK APRON	580 SY		
0487	2535000000-E	846	***X *** CONCRETE CURB (9" X 18")	350 LF		
0488	2627000000-E	852	4" CONCRETE ISLAND COVER	580 SY		
0489	6045000000-E	SP	*** TEMPORARY PIPE (18")	24 LF		
0490	7108000000-E	1705	VEHICLE SIGNAL HEAD (12", 1 SECTION)	4 EA		
0491	7980000000-N	SP	GENERIC SIGNAL ITEM DYNAMIC MESSAGE SIGN (TYPE 1C)	4 EA		

County : Brunswick

Line #	Item Number	Sec #	Description	Quantity	Unit Cost	Amount
0492	5882000000-N	SP	GENERIC UTILITY ITEM 8" SEWER VALVE	2 EA		

CULVERT ITEMS

0421	8056000000-N	402	REMOVAL OF EXISTING STRUCTURE AT STATION ***** (226+01.00 -L-)	Lump Sum	L.S.	
0422	8056000000-N	402	REMOVAL OF EXISTING STRUCTURE AT STATION ***** (316+72.00 -L-)	Lump Sum	L.S.	
0423	8056000000-N	402	REMOVAL OF EXISTING STRUCTURE AT STATION ***** (64+15.00 -L-)	Lump Sum	L.S.	
0424	8056000000-N	402	REMOVAL OF EXISTING STRUCTURE AT STATION ***** (83+76.00 -L-)	Lump Sum	L.S.	
0425	8126000000-N	414	CULVERT EXCAVATION, STA ***** (226+01.00 -L-)	Lump Sum	L.S.	
0426	8126000000-N	414	CULVERT EXCAVATION, STA ***** (316+72.00 -L-)	Lump Sum	L.S.	
0427	8126000000-N	414	CULVERT EXCAVATION, STA ***** (64+15.00 -L-)	Lump Sum	L.S.	
0428	8126000000-N	414	CULVERT EXCAVATION, STA ***** (83+76.00 -L-)	Lump Sum	L.S.	
0429	8133000000-E	414	FOUNDATION CONDITIONING MATER- IAL, BOX CULVERT	807 TON		
0430	8196000000-E	420	CLASS A CONCRETE (CULVERT)	887.2 CY		
0431	8245000000-E	425	REINFORCING STEEL (CULVERT)	119,524 LB		
0432	8804000000-N	SP	GENERIC CULVERT ITEM ASBESTOS ASSESSMENT	Lump Sum	L.S.	

County : Brunswick

Line #	Item Number	Sec #	Description	Quantity	Unit Cost	Amount
WALL ITEMS						
0433	8801000000-E	SP	MSE RETAINING WALL NO **** (1)	1,950 SF		
0434	8801000000-E	SP	MSE RETAINING WALL NO **** (10)	9,625 SF		
0435	8801000000-E	SP	MSE RETAINING WALL NO **** (11)	14,880 SF		
0436	8801000000-E	SP	MSE RETAINING WALL NO **** (12)	8,105 SF		
0437	8801000000-E	SP	MSE RETAINING WALL NO **** (13)	4,770 SF		
0438	8801000000-E	SP	MSE RETAINING WALL NO **** (2)	460 SF		
0439	8801000000-E	SP	MSE RETAINING WALL NO **** (3)	4,540 SF		
0440	8801000000-E	SP	MSE RETAINING WALL NO **** (4)	2,015 SF		
0441	8801000000-E	SP	MSE RETAINING WALL NO **** (5)	6,270 SF		
0442	8801000000-E	SP	MSE RETAINING WALL NO **** (6)	2,765 SF		
0443	8801000000-E	SP	MSE RETAINING WALL NO **** (7)	8,265 SF		
0444	8801000000-E	SP	MSE RETAINING WALL NO **** (8)	4,135 SF		
0445	8801000000-E	SP	MSE RETAINING WALL NO **** (9)	16,210 SF		

STRUCTURE ITEMS

0446	8017000000-N	SP	CONSTRUCTION, MAINTENANCE, & REMOVAL OF TEMP ACCESS AT STA ***** (390+15.00 -L- LT)	Lump Sum	L.S.	
------	--------------	----	--	----------	------	--

County : Brunswick

Line #	Item Number	Sec #	Description	Quantity	Unit Cost	Amount
0447	8035000000-N	402	REMOVAL OF EXISTING STRUCTURE AT STATION ***** (369+42.00 -L- EBL)	Lump Sum	L.S.	
0448	8035000000-N	402	REMOVAL OF EXISTING STRUCTURE AT STATION ***** (390+15.00 -L- RT)	Lump Sum	L.S.	
0449	8065000000-N	SP	ASBESTOS ASSESSMENT	Lump Sum	L.S.	
0450	8112730000-N	450	PDA TESTING	10 EA		
0451	8121000000-N	412	UNCLASSIFIED STRUCTURE EXCAVA- TION AT STATION ***** (369+42.00 -L- EBL)	Lump Sum	L.S.	
0452	8121000000-N	412	UNCLASSIFIED STRUCTURE EXCAVA- TION AT STATION ***** (390+15.00 -L- LT)	Lump Sum	L.S.	
0453	8121000000-N	412	UNCLASSIFIED STRUCTURE EXCAVA- TION AT STATION ***** (390+15.00 -L- RT)	Lump Sum	L.S.	
0454	8147000000-E	420	REINFORCED CONCRETE DECK SLAB	49,880 SF		
0455	8161000000-E	420	GROOVING BRIDGE FLOORS	51,122.6 SF		
0456	8175000000-E	420	CLASS AA CONCRETE (BRIDGE)	399.9 CY		
0457	8182000000-E	420	CLASS A CONCRETE (BRIDGE)	209.3 CY		
0458	8210000000-N	422	BRIDGE APPROACH SLABS, STATION ***** (31+30.81 -Y REV-)	Lump Sum	L.S.	
0459	8210000000-N	422	BRIDGE APPROACH SLABS, STATION ***** (369+42.00 -L- EBL)	Lump Sum	L.S.	
0460	8210000000-N	422	BRIDGE APPROACH SLABS, STATION ***** (369+42.00 -L- WBL)	Lump Sum	L.S.	
0461	8210000000-N	422	BRIDGE APPROACH SLABS, STATION ***** (39+52.37 -Y14A-)	Lump Sum	L.S.	

County : Brunswick

Line #	Item Number	Sec #	Description	Quantity	Unit Cost	Amount
0462	8210000000-N	422	BRIDGE APPROACH SLABS, STATION ***** (390+15.00 -L- LT)	Lump Sum	L.S.	
0463	8210000000-N	422	BRIDGE APPROACH SLABS, STATION ***** (390+15.00 -L- RT)	Lump Sum	L.S.	
0464	8217000000-E	425	REINFORCING STEEL (BRIDGE)	37,903 LB		
0465	8224000000-E	425	EPOXY COATED REINFORCING STEEL (BRIDGE)	61,921 LB		
0466	8259000000-E	430	36" PRESTRESSED CONCRETE GIR- DERS	1,361.3 LF		
0467	8265000000-E	430	54" PRESTRESSED CONCRETE GIR- DERS	2,455.63 LF		
0468	8277000000-E	430	MODIFIED 72" PRESTRESSED CONC GIRDERS	2,068.2 LF		
0469	8328000000-E	450	PILE DRIVING EQUIPMENT SETUP FOR *** PRESTRESSED CONCRETE PILES (16")	28 EA		
0470	8328000000-E	450	PILE DRIVING EQUIPMENT SETUP FOR *** PRESTRESSED CONCRETE PILES (24")	24 EA		
0471	8328200000-E	450	PILE DRIVING EQUIPMENT SETUP FOR *** STEEL PILES (HP 12 X 53)	108 EA		
0472	8333000000-E	450	16" PRESTRESSED CONCRETE PILES	1,715 LF		
0473	8350000000-E	450	24" PRESTRESSED CONCRETE PILES	2,520 LF		
0474	8364000000-E	450	HP12X53 STEEL PILES	8,531 LF		
0475	8391000000-N	450	STEEL PILE POINTS	80 EA		
0476	8393000000-N	450	PILE REDRIVES	130 EA		
0477	8475000000-E	460	TWO BAR METAL RAIL	1,730.95 LF		

County : Brunswick

Line #	Item Number	Sec #	Description	Quantity	Unit Cost	Amount
0478	8503000000-E	460	CONCRETE BARRIER RAIL	515.7	LF	
0479	8517000000-E	460	1'-***"X *****" CONCRETE PARA-PET (1'-2" X 2'-6")	1,792.19	LF	
0480	8531000000-E	462	4" SLOPE PROTECTION	119	SY	
0481	8608000000-E	876	RIP RAP CLASS II (2'-0" THICK)	2,190	TON	
0482	8622000000-E	876	GEOTEXTILE FOR DRAINAGE	2,435	SY	
0483	8657000000-N	430	ELASTOMERIC BEARINGS	Lump Sum	L.S.	
0484	8727000000-N	SP	ELECTRICAL CONDUIT SYSTEM FOR SIGNALS AT STA***** (390+15.00 -L- LT)	Lump Sum	L.S.	
0485	8727000000-N	SP	ELECTRICAL CONDUIT SYSTEM FOR SIGNALS AT STA***** (390+15.00 -L- RT)	Lump Sum	L.S.	

1353/Nov15/Q6372133.278/D2440589406070/E489

Total Amount Of Bid For Entire Project :