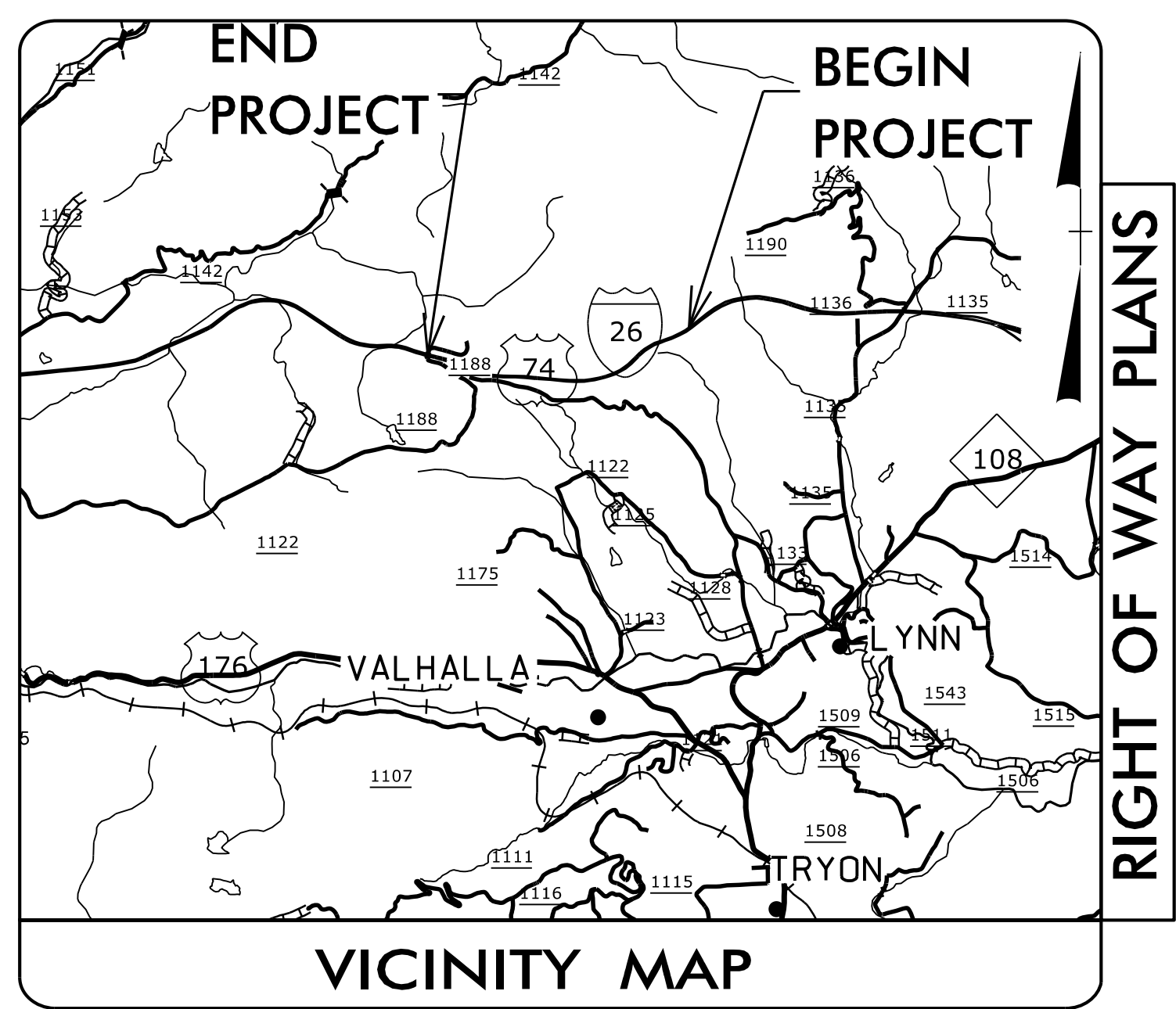


09/08/09  
05-APR-2021 09:25  
C:\JB\UB0s\Utilities\Engineering\UB0\Proj\15614.1075010\_ut\_1\_tsh\_U001.psh.dgn  
\$\$\$\$USERVALUE\$\$\$\$

**TIP PROJECT: 15614.1075010**



STATE OF NORTH CAROLINA  
DIVISION OF HIGHWAYS

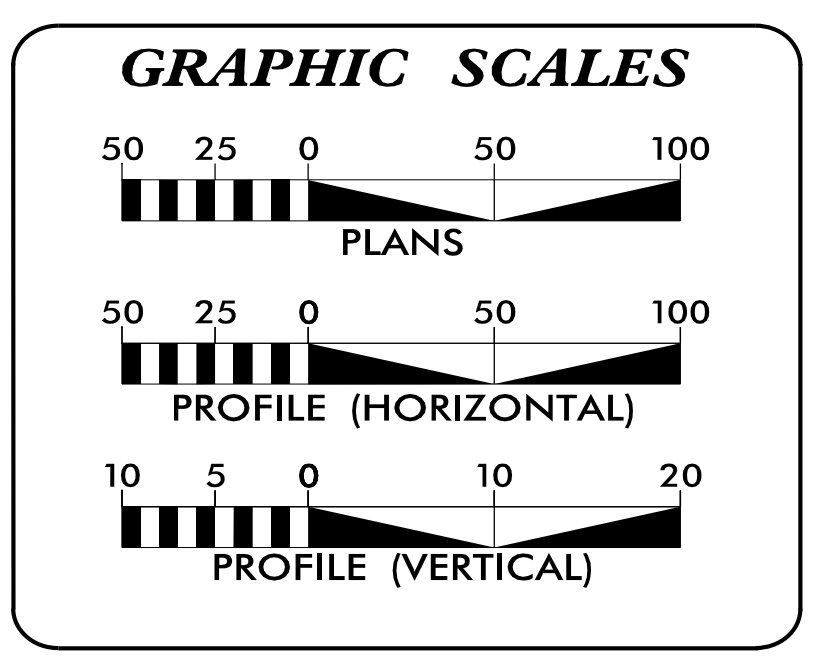
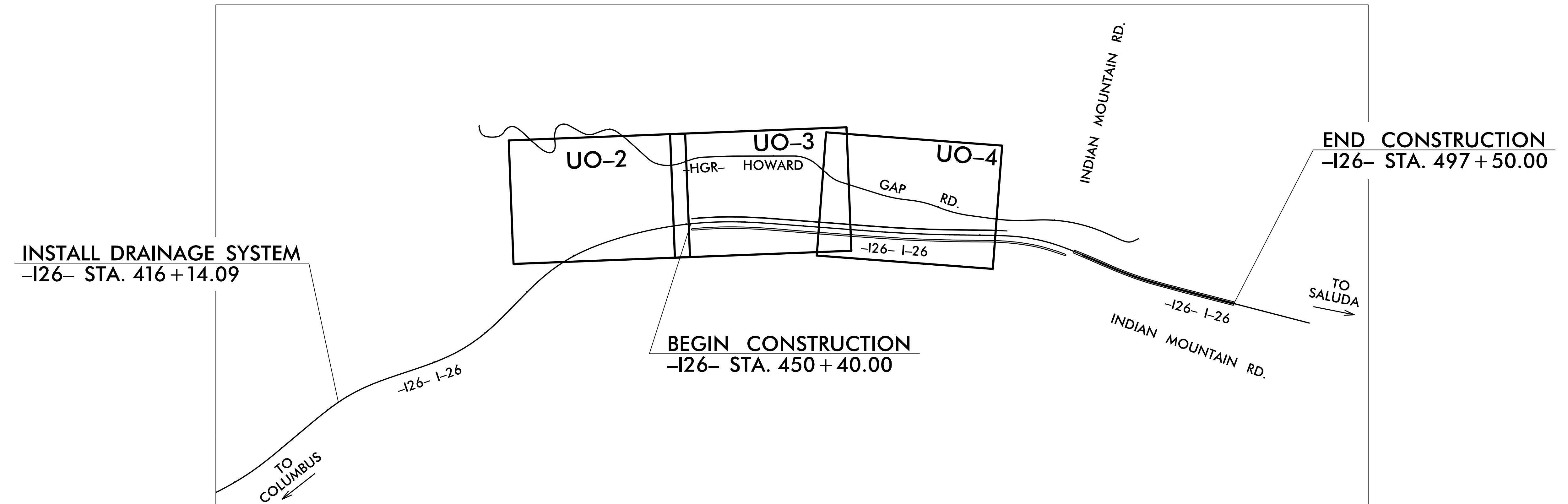
**UTILITIES BY OTHERS PLANS  
POLK COUNTY**

LOCATION: I-26 (FROM APPROX. MM 64 TO APPROX. MM 62.5)  
TYPE OF WORK: GRADING, DRAINAGE AND PAVING



T.I.P. NO.	SHEET NO.
15614.1075010	UO-1

NOTE:  
ALL UTILITY WORK SHOWN ON THIS SHEET WILL BE DONE BY OTHERS. NO PAYMENT WILL BE MADE TO THE CONTRACTOR FOR UTILITY WORK SHOWN ON THIS SHEET.



**INDEX OF SHEETS**

SHEET NO.:	DESCRIPTION:
UO-1	TITLE SHEET
UO-02 THRU UO-04	UBO PLAN SHEETS

**UTILITY OWNERS WITH CONFLICTS**

(A) POWER TRANSMISSION - DUKE ENERGY  
(B) COMMUNICATIONS/CATV - SPECTRUM  
(C) COMMUNICATIONS - WINDSTREAM  
(D) WATER - TOWN OF TRYON, NC  
(E) COMMUNICATIONS - RIVERSTREET NETWORKS

PREPARED IN THE OFFICE OF:

**TELICS**  
PO BOX 6318  
HIGH POINT, NC 27262  
(336) 788-0150

JIM BROOKS UTILITY PROJECT MANAGER  
CHRIS KENNEDY PROJECT UTILITY COORDINATOR

**DIVISION OF HIGHWAYS  
DIVISION 14**  
253 WEBSTER RD.  
SYLVIA, NC 28779

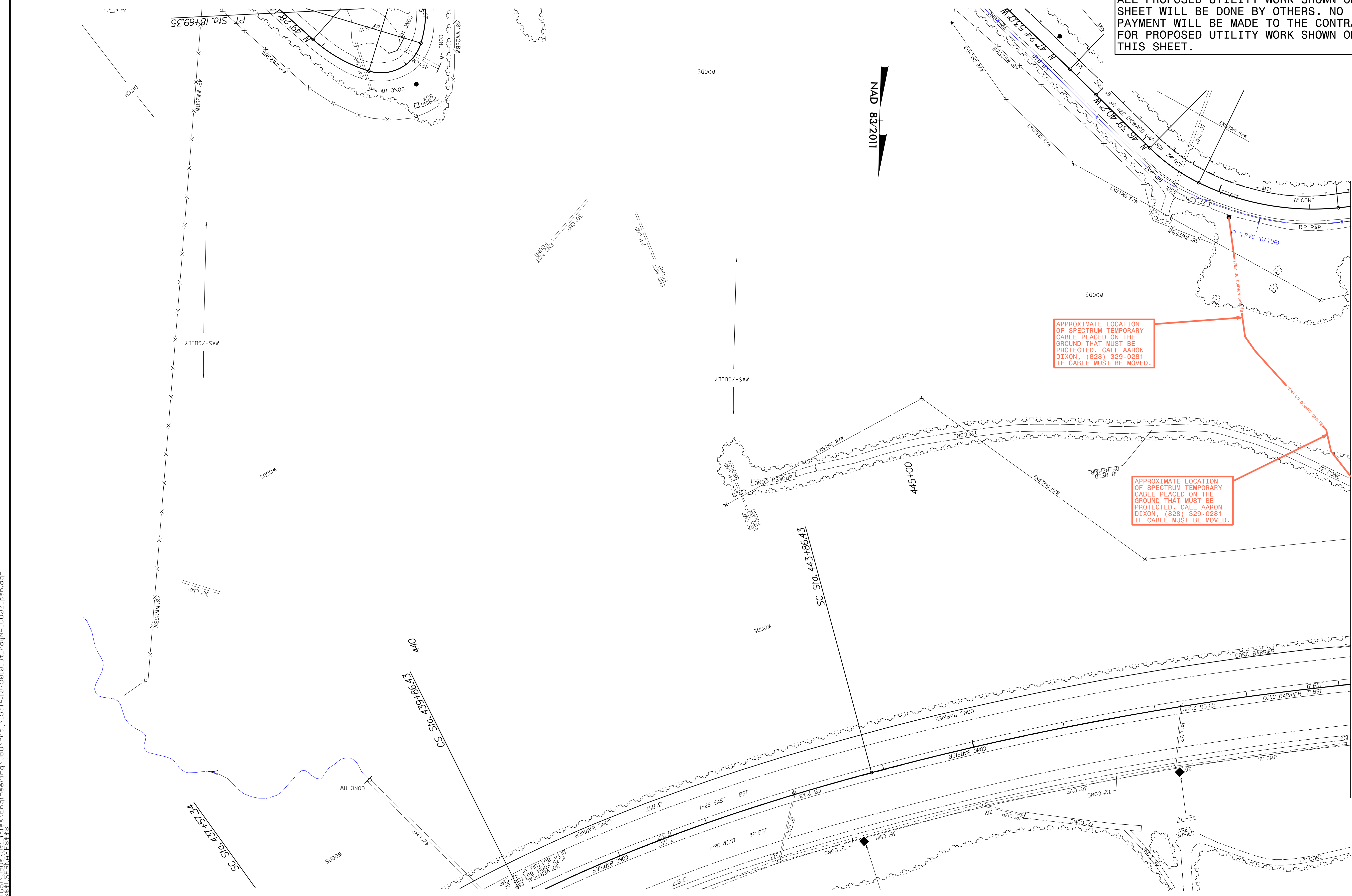
JEANETTE L. WHITE, PE SENIOR PROJECT ENGINEER  
BOB GOLDING DIVISION UTILITY ENGINEER

5/14/99  
22-MAR-2021 20:42  
C:\GIS\UBO\Utilities\Engineering\UBO\Proj\15614.1075010.ut\_rdy\NA\_U002\_psh.dgn  
15614.1075010.dwg

PROJECT REFERENCE NO.	SHEET NO.
15614.1075010	U0-2
THIS SHEET CORRESPONDS TO RDY-NA	

### UTILITIES BY OTHERS

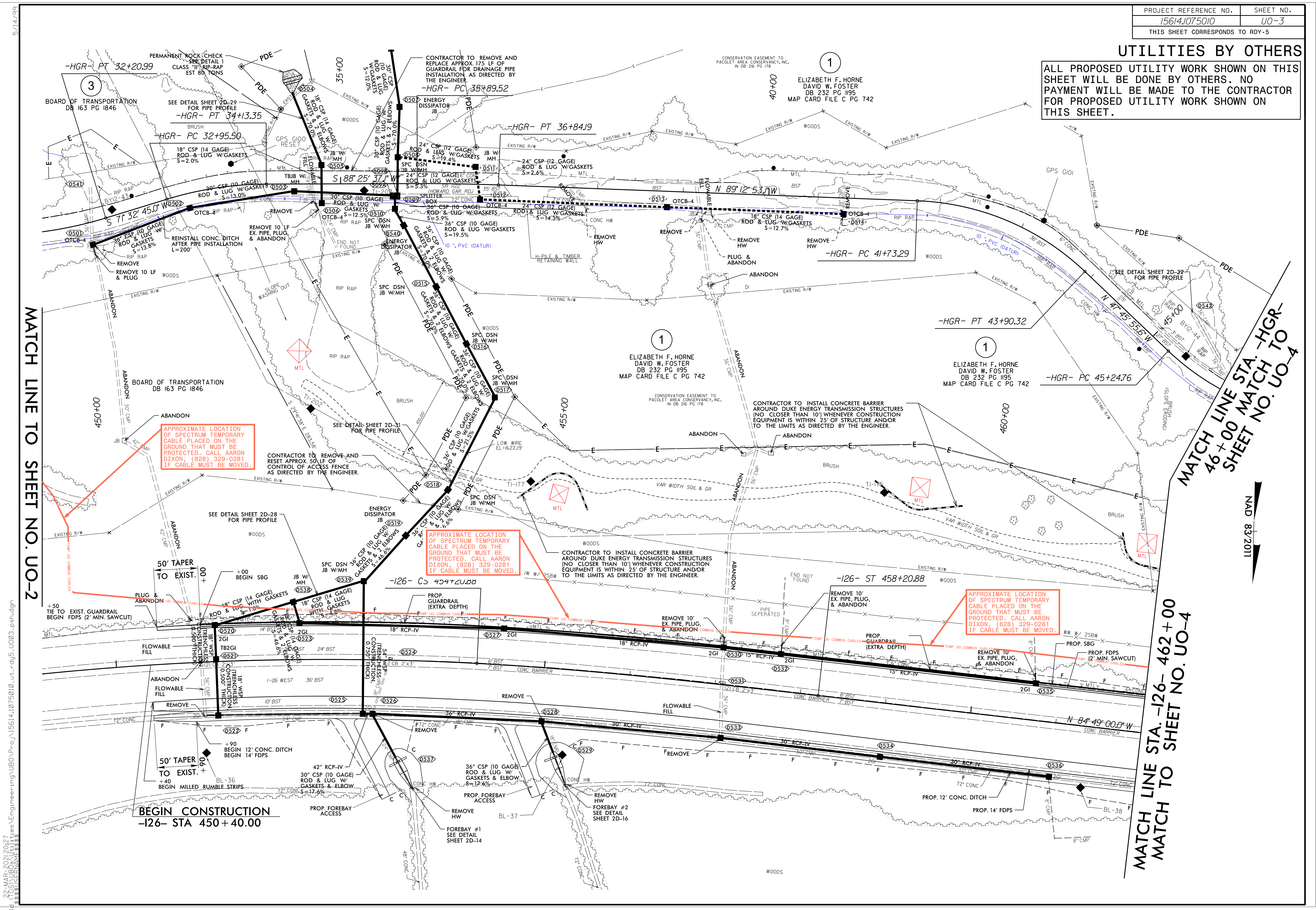
ALL PROPOSED UTILITY WORK SHOWN ON THIS SHEET WILL BE DONE BY OTHERS. NO PAYMENT WILL BE MADE TO THE CONTRACTOR FOR PROPOSED UTILITY WORK SHOWN ON THIS SHEET.



MATCH LINE TO SHEET NO. U0-3

### UTILITIES BY OTHERS

ALL PROPOSED UTILITY WORK SHOWN ON THIS SHEET WILL BE DONE BY OTHERS. NO PAYMENT WILL BE MADE TO THE CONTRACTOR FOR PROPOSED UTILITY WORK SHOWN ON THIS SHEET.



MATCH LINE TO SHEET NO. UO-2

MATCH LINE STA. -HGR- 46+00 MATCH TO SHEET NO. UO-4

MATCH LINE STA. -126- 462+00 MATCH TO SHEET NO. UO-4



5/14/2017  
 2:26:48 PM  
 C:\Users\jrbrown\OneDrive\Engineering\UO03\Proj\15614.1075010\ut\_rdy5\_u003\_rsh.dgn  
 15614.1075010\ut\_rdy5\_u003\_rsh.dgn

**BEGIN CONSTRUCTION**  
 -126- STA 450+40.00

APPROXIMATE LOCATION OF SPECTRUM TEMPORARY CABLE PLACED ON THE GROUND THAT MUST BE PROTECTED. CALL AARON DIXON, (828) 329-0281 IF CABLE MUST BE MOVED.

APPROXIMATE LOCATION OF SPECTRUM TEMPORARY CABLE PLACED ON THE GROUND THAT MUST BE PROTECTED. CALL AARON DIXON, (828) 329-0281 IF CABLE MUST BE MOVED.

APPROXIMATE LOCATION OF SPECTRUM TEMPORARY CABLE PLACED ON THE GROUND THAT MUST BE PROTECTED. CALL AARON DIXON, (828) 329-0281 IF CABLE MUST BE MOVED.

5/14/99  
22-MAR-2021 20:36  
C:\Users\jrb\OneDrive\Engineering\UBO\Pro\15614.1075010-ut-rd46-U004-psh.dgn  
jrb

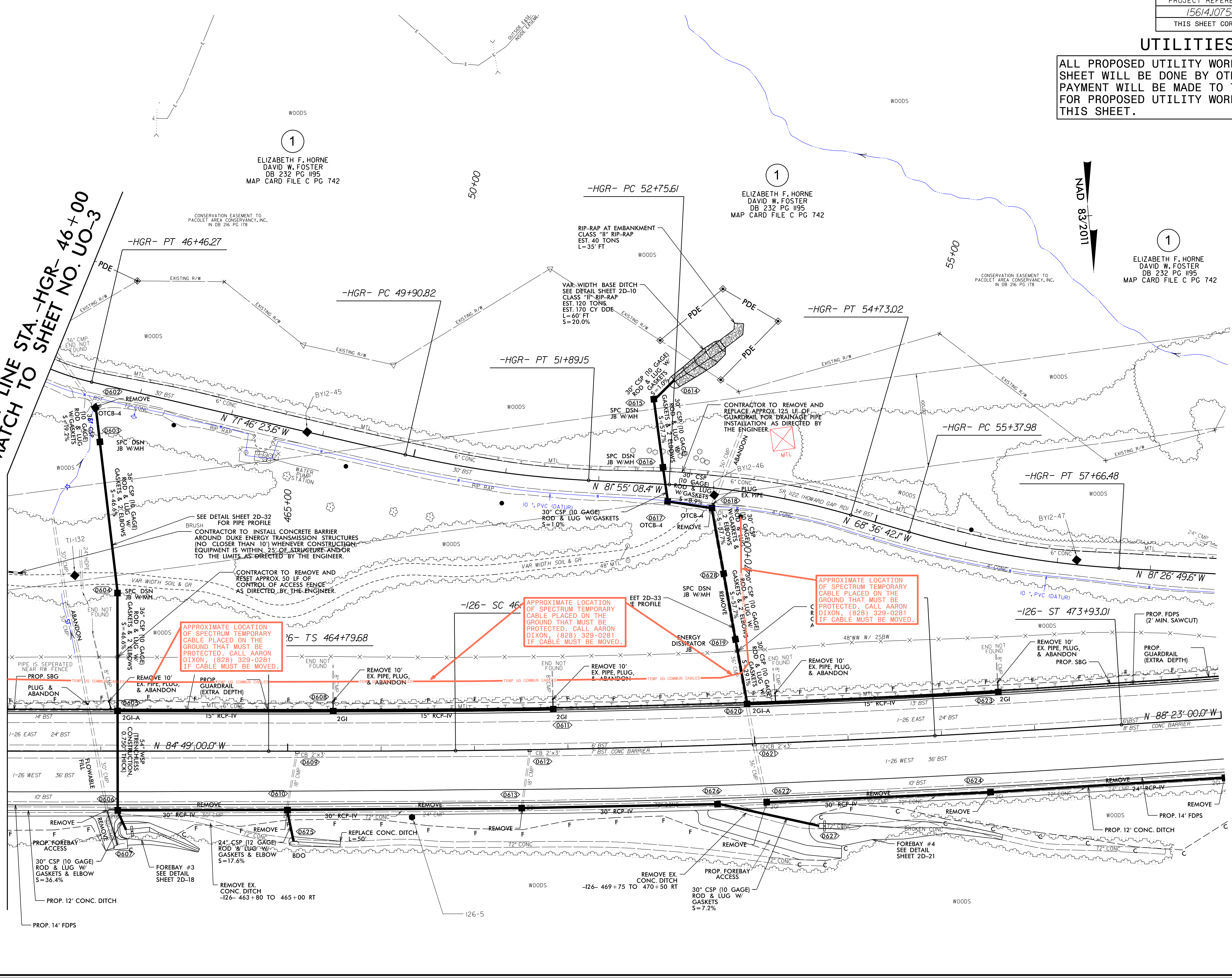
PROJECT REFERENCE NO.	SHEET NO.
15614.1075010	U0-4
THIS SHEET CORRESPONDS TO RDY-6	

### UTILITIES BY OTHERS

ALL PROPOSED UTILITY WORK SHOWN ON THIS SHEET WILL BE DONE BY OTHERS. NO PAYMENT WILL BE MADE TO THE CONTRACTOR FOR PROPOSED UTILITY WORK SHOWN ON THIS SHEET.

MATCH LINE STA. -HGR- 46+00  
MATCH TO SHEET NO. UO-3

MATCH LINE STA. -I26- 462+00  
MATCH TO SHEET NO. UO-3



1  
ELIZABETH F. HORNE  
DAVID W. FOSTER  
DB 232 PG 195  
MAP CARD FILE C PG 742

1  
ELIZABETH F. HORNE  
DAVID W. FOSTER  
DB 232 PG 195  
MAP CARD FILE C PG 742

1  
ELIZABETH F. HORNE  
DAVID W. FOSTER  
DB 232 PG 195  
MAP CARD FILE C PG 742

CONSERVATION EASEMENT TO  
PACOLET AREA CONSERVANCY, INC.  
N DB 246 PG 118

CONSERVATION EASEMENT TO  
PACOLET AREA CONSERVANCY, INC.  
N DB 246 PG 118

SEE DETAIL SHEET 2D-32  
FOR PIPE PROFILE  
CONTRACTOR TO INSTALL CONCRETE BARRIER  
AROUND DUKE ENERGY TRANSMISSION STRUCTURES  
(NO CLOSER THAN 10') WHENEVER CONSTRUCTION  
EQUIPMENT IS WITHIN 25' OF STRUCTURE AND/OR  
TO THE LIMITS AS DIRECTED BY THE ENGINEER.

CONTRACTOR TO REMOVE AND  
RESET APPROX. 50 LF OF  
CONTROL OF ACCESS FENCE  
AS DIRECTED BY THE ENGINEER.

APPROXIMATE LOCATION  
OF SPECTRUM TEMPORARY  
CABLE PLACED ON THE  
GROUND THAT MUST BE  
PROTECTED. CALL AARON  
DIXON, (828) 329-0281  
IF CABLE MUST BE MOVED.

APPROXIMATE LOCATION  
OF SPECTRUM TEMPORARY  
CABLE PLACED ON THE  
GROUND THAT MUST BE  
PROTECTED. CALL AARON  
DIXON, (828) 329-0281  
IF CABLE MUST BE MOVED.

REMOVE EX.  
CONC. DITCH  
-I26- 463+80 TO 465+00 RT

REMOVE EX.  
CONC. DITCH  
-I26- 469+75 TO 470+50 RT

REMOVE EX.  
CONC. DITCH  
-I26- 469+75 TO 470+50 RT

REMOVE EX.  
CONC. DITCH  
-I26- 469+75 TO 470+50 RT

