

**This electronic collection of documents is provided
for the convenience of the user
and is Not a Certified Document –**

**The documents contained herein were originally issued
and sealed by the individuals whose names and license
numbers appear on each page, on the dates appearing
with their signature on that page.**

**This file or an individual page
shall not be considered a certified document.**

02-DEC-2019 15:37 S:\Server_Files\PROJECTS\2016\A2016703.00_TGS_Div-2 LIB Replacement\A2016703.00_TGS_Div-2 LIB B-4788\Design\Utilities\Engineering\UC\Proj\B-4788_UT_+sh_UCI_psh.dgn

TIP PROJECT: 17BP.2.R.92

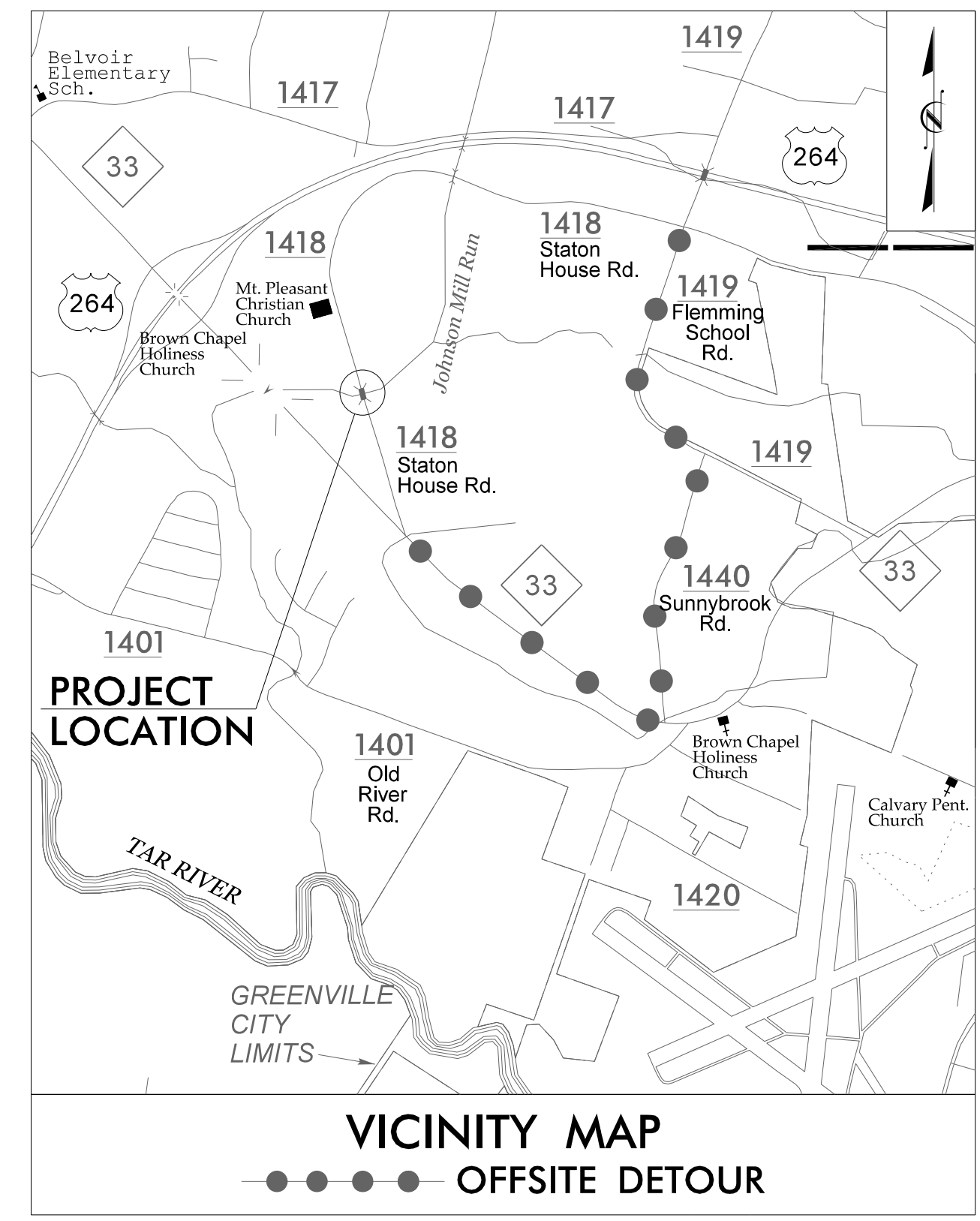
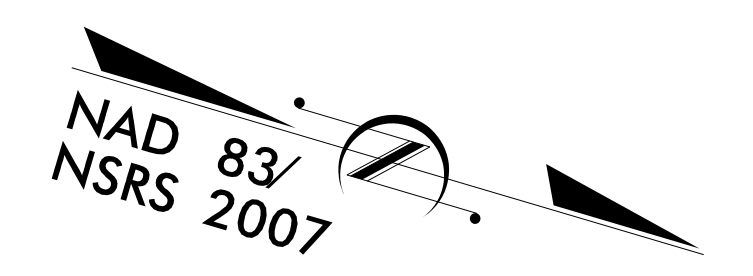
T.I.P. NO.	SHEET NO.
17BP.2.R.92	UC-1
DOCUMENT NOT CONSIDERED FINAL UNLESS ALL SIGNATURES COMPLETED	

STATE OF NORTH CAROLINA
DIVISION OF HIGHWAYS

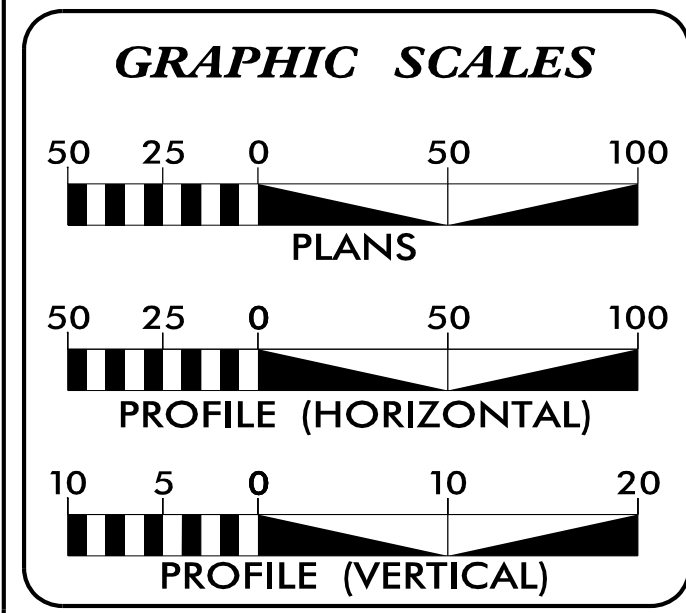
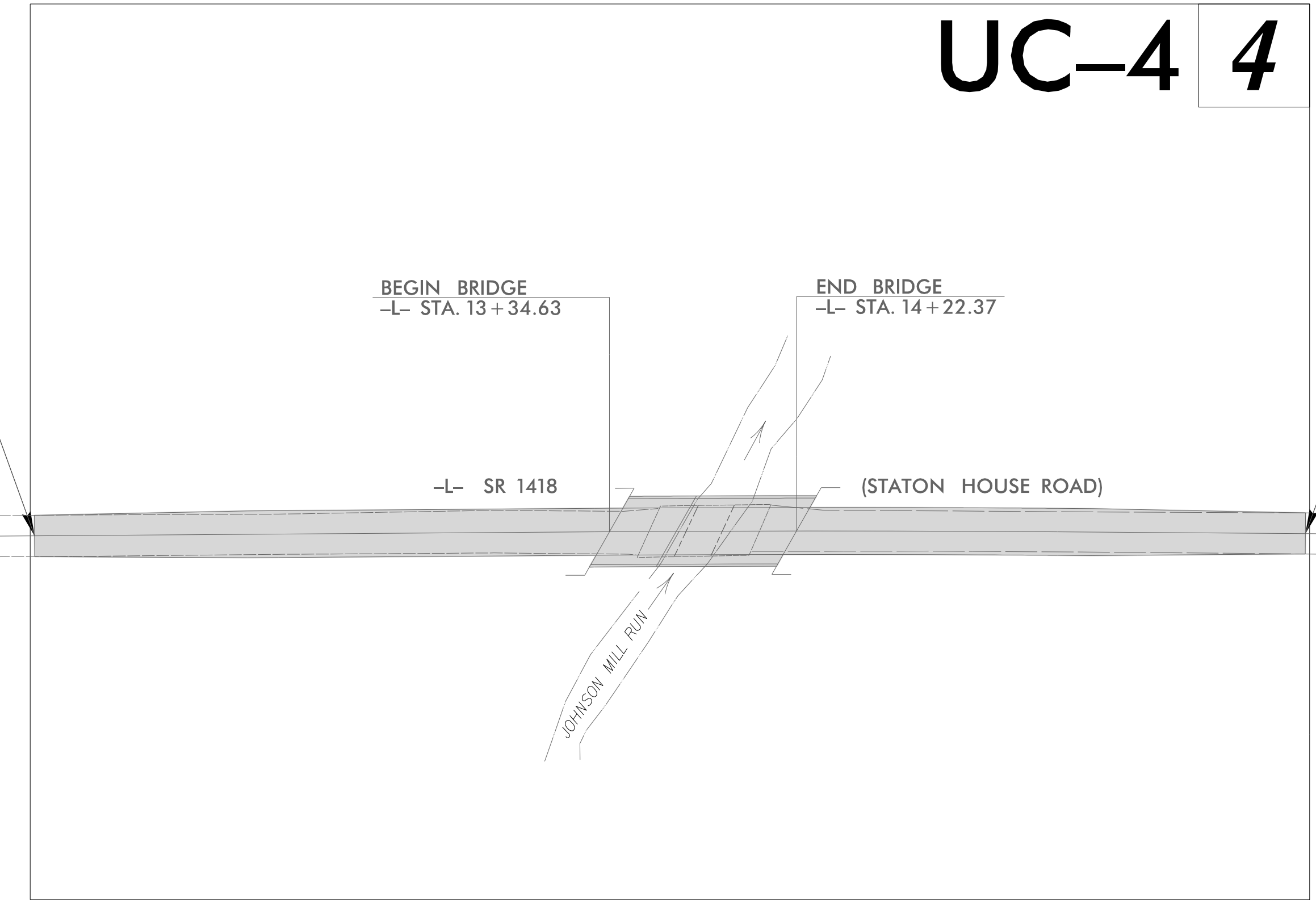
**UTILITY CONSTRUCTION PLANS
PITT COUNTY**

**LOCATION: BRIDGE NO. 171 OVER JOHNSON MILL RUN
ON SR 1418 (STATION HOUSE RD.)**

TYPE OF WORK: WATER RELOCATIONS



BEGIN STATE PROJECT 17BP.2.R.92
-L- STA. 10 + 65.00



INDEX OF SHEETS

SHEET NO.	DESCRIPTION
UC-1	TITLE SHEET
UC-2	UTILITY SYMBOLOGY
UC-3	NOTES
UC-3A THRU UC-3B	DETAILS
UC-4	UTILITY PLAN & PROFILE

WATER OWNER ON PROJECT

(A) GREENVILLE UTILITIES COMMISSION
- WATER

PREPARED IN THE OFFICE OF:

HINDE ENGINEERING
License No. C-2639
401 Harrison Oaks Blvd., Suite 220 Cary, NC 27513
Ph. (919) 653-0001

<u>Clint L. Stevens, P.E.</u>	UTILITIES PROJECT MANAGER
<u>Corey Bousquet, P.E.</u>	UTILITIES PROJECT ENGINEER
<u>Jordan Chapman</u>	UTILITIES PROJECT DESIGNER

SEAL

DIVISION OF HIGHWAYS UTILITIES UNIT
1555 MAIL SERVICES CENTER
RALEIGH NC 27699-1555
PHONE (919) 707-6690
FAX (919) 250-4151

<u>Preston Hunter, P.E.</u>	DIVISION CONTACT #1
<u>Cadmus Capehart, P.E.</u>	DIVISION CONTACT #2
<u>Sarah Lentine, P.E.</u>	DIVISION CONTACT #3
<u>David Kramer</u>	DIVISION CONTACT #4

UTILITIES PLAN SHEET SYMBOLS

PROPOSED WATER SYMBOLS

Water Line (Sized as Shown)	
11¼ Degree Bend	
22½ Degree Bend	
45 Degree Bend	
90 Degree Bend	
Plug	
Tee	
Cross	
Reducer	
Gate Valve	
Butterfly Valve	
Tapping Valve	
Line Stop	
Line Stop with Bypass	
Blow Off	
Fire Hydrant	
Relocate Fire Hydrant	
Remove Fire Hydrant	REM FH
Water Meter	
Relocate Water Meter	
Remove Water Meter	REM WM
Water Pump Station	
RPZ Backflow Preventer	
DCV Backflow Preventer	
Relocate RPZ Backflow Preventer	
Relocate DCV Backflow Preventer	

PROPOSED SEWER SYMBOLS

Gravity Sewer Line (Sized as Shown)	
Force Main Sewer Line (Sized as Shown)	
Manhole (Sized per Note)	
Sewer Pump Station	

PROPOSED MISCELLANEOUS UTILITIES SYMBOLS

Power Pole	
Telephone Pole	
Joint Use Pole	
Telephone Pedestal	
Utility Line by Others (Type as Shown)	
Trenchless Installation	
Encasement by Open Cut	
Encasement	

Thrust Block	
Air Release Valve	
Utility Vault	
Concrete Pier	
Steel Pier	
Plan Note	
Pay Item Note	

NOTE
PAY ITEM


EXISTING UTILITIES SYMBOLS

Power Pole		*Underground Power Line	
Telephone Pole		*Underground Telephone Cable	
Joint Use Pole		*Underground Telephone Conduit	
Utility Pole		*Underground Fiber Optics Telephone Cable	
Utility Pole with Base		*Underground TV Cable	
H-Frame Pole		*Underground Fiber Optics TV Cable	
Power Transmission Line Tower		*Underground Gas Pipeline	
Water Manhole		Aboveground Gas Pipeline	
Power Manhole		*Underground Water Line	
Telephone Manhole		Aboveground Water Line	
Sanitary Sewer Manhole		*Underground Gravity Sanitary Sewer Line	
Hand Hole for Cable		Aboveground Gravity Sanitary Sewer Line	
Power Transformer		*Underground SS Forced Main Line	
Telephone Pedestal		Underground Unknown Utility Line	
CATV Pedestal		SUE Test Hole	
Gas Valve		Water Meter	
Gas Meter		Water Valve	
Located Miscellaneous Utility Object		Fire Hydrant	
Abandoned According to Utility Records	AATUR	Sanitary Sewer Cleanout	
End of Information	E.O.I.		

*For Existing Utilities
Utility Line Drawn from Record (Type as Shown)
Designated Utility Line (Type as Shown)

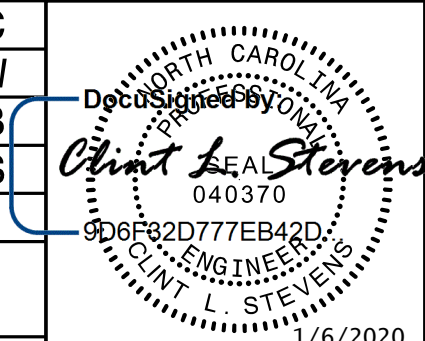
02-DEC-2010 15:37
C:\Users\jgibson\Documents\Projects\17BP.2.R.92\TGS_Drv-2_LIB_B-4788\Design\Utilities\Engineering\UC\Pro\B-4788_Ut...sym_UC2_psh.dgn
REV: 2/1/2012

UTILITY CONSTRUCTION



HINDE ENGINEERING
 License No. C-2639
 401 Harrison Oaks Blvd., Suite 220 Cary, NC 27513

**DOCUMENT NOT CONSIDERED FINAL
 UNLESS ALL SIGNATURES COMPLETED**

PROJECT REFERENCE NO. 17BP.2.R.92	SHEET NO. UC-3
DESIGNED BY: JKC	
DRAWN BY: ASW	
CHECKED BY: CDB	
APPROVED BY: CLS	
REVISED:	
NORTH CAROLINA DEPARTMENT OF TRANSPORTATION UTILITIES ENGINEERING SEC. PHONE: (919) 707-6690 FAX: (919) 250-4151	
1/6/2020 UTILITY CONSTRUCTION PLANS ONLY	

GENERAL NOTES:

1. THE PROPOSED UTILITY CONSTRUCTION SHALL MEET THE APPLICABLE REQUIREMENTS OF THE NC DEPARTMENT OF TRANSPORTATION'S "STANDARD SPECIFICATIONS FOR ROADS AND STRUCTURES" DATED JANUARY 2018.
2. THE EXISTING UTILITIES BELONG TO GREENVILLE UTILITIES COMMISSION. THE CONTACT IS MR. SCOTT FARMER WHO CAN BE REACHED AT 252-551-1529.
3. ALL WATER LINES TO BE INSTALLED WITHIN COMPLIANCE OF THE RULES AND REGULATIONS OF THE NORTH CAROLINA DEPARTMENT OF ENVIRONMENTAL QUALITY, DIVISION OF WATER RESOURCES, PUBLIC WATER SUPPLY SECTION. ALL SEWER LINES TO BE INSTALLED WITHIN COMPLIANCE OF THE RULES AND REGULATIONS OF THE NORTH CAROLINA DEPARTMENT OF ENVIRONMENT QUALITY, DIVISION OF WATER RESOURCES, WATER QUALITY SECTION. PERFORM ALL WORK IN ACCORDANCE WITH THE APPLICABLE PLUMBING CODES.
4. THE UTILITY OWNER OWNS THE EXISTING UTILITY FACILITIES AND WILL OWN THE NEW UTILITY FACILITIES AFTER ACCEPTANCE BY THE DEPARTMENT. THE DEPARTMENT OWNS THE CONSTRUCTION CONTRACT AND HAS ADMINISTRATIVE AUTHORITY. COMMUNICATIONS AND DECISIONS BETWEEN THE CONTRACTOR AND UTILITY OWNER ARE NOT BINDING UPON THE DEPARTMENT OR THIS CONTRACT UNLESS AUTHORIZED BY THE ENGINEER. AGREEMENTS BETWEEN THE UTILITY OWNER AND CONTRACTOR FOR THE WORK THAT IS NOT PART OF THIS CONTRACT OR IS SECONDARY TO THIS CONTRACT ARE ALLOWED, BUT ARE NOT BINDING UPON THE DEPARTMENT.
5. PROVIDE ACCESS FOR THE DEPARTMENT PERSONNEL AND THE OWNER'S REPRESENTATIVES TO ALL PHASES OF CONSTRUCTION. NOTIFY DEPARTMENT PERSONNEL AND THE UTILITY OWNER TWO WEEKS PRIOR TO COMMENCEMENT OF ANY WORK AND ONE WEEK PRIOR TO SERVICE INTERRUPTION. KEEP UTILITY OWNERS' REPRESENTATIVES INFORMED OF WORK PROGRESS AND PROVIDE OPPORTUNITY FOR INSPECTION OF CONSTRUCTION AND TESTING.

6. THE PLANS DEPICT THE BEST AVAILABLE INFORMATION FOR THE LOCATION, SIZE, AND TYPE OF MATERIAL FOR ALL EXISTING UTILITIES. MAKE INVESTIGATIONS FOR DETERMINING THE EXACT LOCATION, SIZE, AND TYPE MATERIAL OF THE EXISTING FACILITIES AS NECESSARY FOR THE CONSTRUCTION OF THE PROPOSED UTILITIES AND FOR AVOIDING DAMAGE TO EXISTING FACILITIES. REPAIR ANY DAMAGE INCURRED TO EXISTING FACILITIES TO THE ORIGINAL OR BETTER CONDITION AT NO ADDITIONAL COST TO THE DEPARTMENT.
7. MAKE FINAL CONNECTIONS OF THE NEW WORK TO THE EXISTING SYSTEM WHERE INDICATED ON THE PLANS, AS REQUIRED TO FIT THE ACTUAL CONDITIONS, OR AS DIRECTED.
8. MAKE CONNECTIONS BETWEEN EXISTING AND PROPOSED UTILITIES AT TIMES MOST CONVENIENT TO THE PUBLIC, WITHOUT ENDANGERING THE UTILITY SERVICE, AND IN ACCORDANCE WITH THE UTILITY OWNER'S REQUIREMENTS. MAKE CONNECTIONS ON WEEKENDS, AT NIGHT, AND ON HOLIDAYS IF NECESSARY.
9. ALL UTILITY MATERIALS SHALL BE APPROVED PRIOR TO DELIVERY TO THE PROJECT. SEE 1500-7, " SUBMITTALS AND RECORDS" IN SECTION 1500 OF THE STANDARD SPECIFICATIONS.

PROJECT SPECIFIC NOTES:

1. PROPOSED 4" WATER LINE SHALL BE D.I.R.J. (DUCTILE IRON RESTRAINED JOINT) PIPE.
2. PROPOSED 6" WATER LINE FOR DIRECTIONAL DRILLING SHALL BE HDPE DR-9.
3. CONTRACTOR'S ATTENTION IS DIRECTED TO SECTIONS 102, 107, AND 1550 OF THE STANDARD SPECIFICATIONS CONCERNING TRENCHLESS INSTALLATION. IT IS CONTRACTOR'S RESPONSIBILITY TO HAVE BORE DESIGNED AND SEALED BY A LICENSED NORTH CAROLINA PROFESSIONAL ENGINEER. NO DAMAGE IS ALLOWED TO RIVER, WETLANDS, OR BUFFER ZONES.
4. IF HDPE PIPE IS INSTALLED BY DIRECTIONAL DRILL. IT SHALL BE FILLED WITH WATER AND NOT BE CONNECTED TO ANY OTHER PIPE OR FITTINGS FOR ONE WEEK FROM THE TIME OF INSTALLATION.
5. THE CONTRACTOR'S ATTENTION IS DIRECTED TO A DISCREPANCY BETWEEN THE FINAL SURVEY DEPICTED ON THE PLANS & THE OWNER'S UTILITY RECORDS IN REGARDS TO THE EXISTING WATER MAIN & EXISTING GAS MAIN LOCATIONS. THE CONTRACTOR SHALL VERIFY THE LOCATION OF THESE UTILITIES PRIOR TO ANY EXCAVATION OR ABANDONMENT OF THE WATER MAIN.

UTILITY CONSTRUCTION

2016 JAN 20 11:18 AM PROJECTS\2016\A2016703.00_TGS.Div-2.LIB.Replacement\A2016703.00_TGS.Div-2.LIB.B-4788\Design\Utilities\Engineering\UC\Proj\B-4788.Ut.L.notes_UC3.psh.dgn

NOT TO SCALE

HINDE ENGINEERING
 License No. C-2639
 401 Harrison Oaks Blvd., Suite 220 Cary, NC 27513

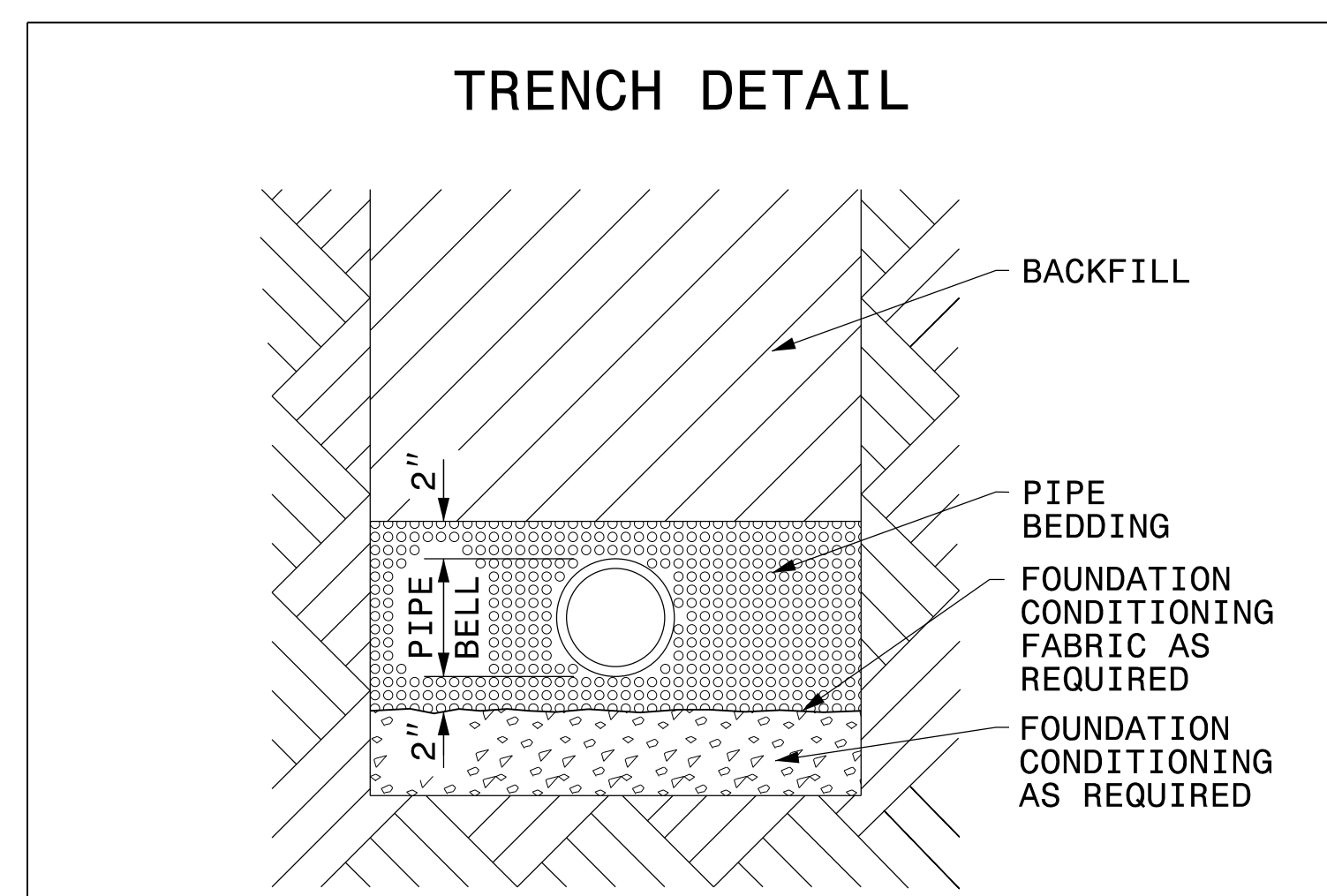
**DOCUMENT NOT CONSIDERED FINAL
 UNLESS ALL SIGNATURES COMPLETED**

PROJECT REFERENCE NO. 17BP.2.R.92	SHEET NO. UC-3A
DESIGNED BY: JKC	
DRAWN BY: ASW	
CHECKED BY: CDB	
APPROVED BY: CLS	
REVISED:	
NORTH CAROLINA DEPARTMENT OF TRANSPORTATION UTILITIES ENGINEERING SEC. PHONE: (919) 707-6690 FAX: (919) 250-4151	
UTILITY CONSTRUCTION PLANS ONLY	

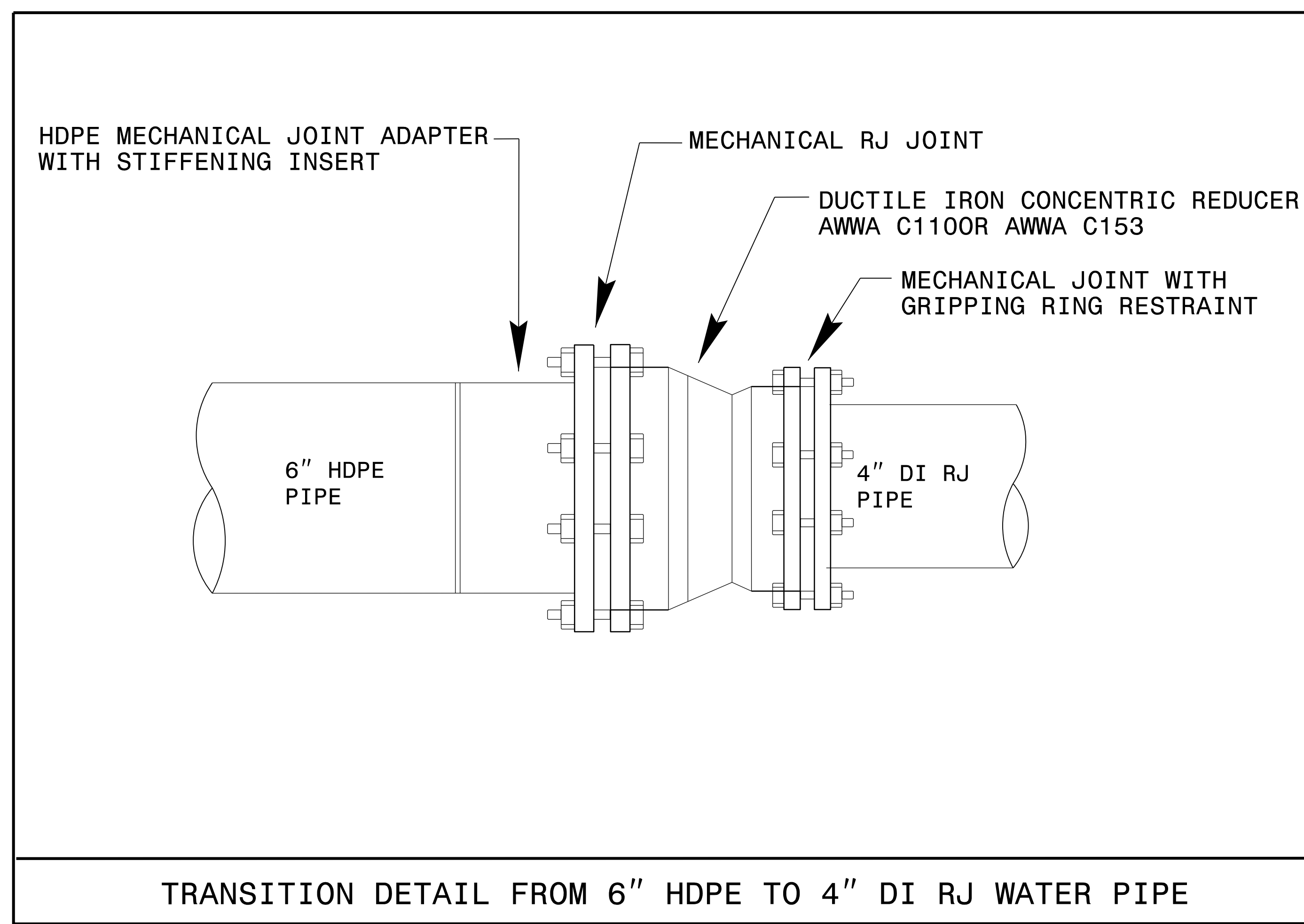
PROJECT TYPICAL DETAILS

UTILITY CONSTRUCTION

NOMINAL PIPE SIZE (INCHES)	TRENCH WIDTH (INCHES)	NOMINAL PIPE SIZE (INCHES)	TRENCH WIDTH (INCHES)
4	28	20	44
6	30	24	48
8	32	30	54
10	34	36	60
12	36	42	66
14	38	48	72
16	40	54	78
18	42		



PLACE FOUNDATION CONDITIONING MATERIAL BELOW BEDDING IF REQUIRED, AS DIRECTED BY ENGINEER. PIPE BEDDED IN SELECT MATERIAL, CLASS II (TYPE 1) OR CLASS III. TRENCH BACKFILLED IN LOOSE 6" LAYERS COMPACTED TO TOP OF TRENCH USING LOCAL EXCAVATED MATERIAL IF APPROVED BY THE ENGINEER, OR SELECT MATERIAL. ALL MATERIAL SHALL BE FREE OF ROCKS, FOREIGN MATERIAL, AND FROZEN EARTH. COMPACTION SHALL BE TO APPROXIMATELY 95% DENSITY IN ACCORDANCE WITH AASHTO T-99 AS MODIFIED BY THE DEPARTMENT OF TRANSPORTATION.



22_DEC-2019_15:37
 PROJECTS\2016\A2016703.00_TGS.Div-2.LIB.Replacement\A2016703.60_TGS.Div-2.LIB.B-4788\Design\Utilities\Engineering\UC\Proj\B-4788.Ut.dtl_UC3A_psh.dgn

NOT TO SCALE

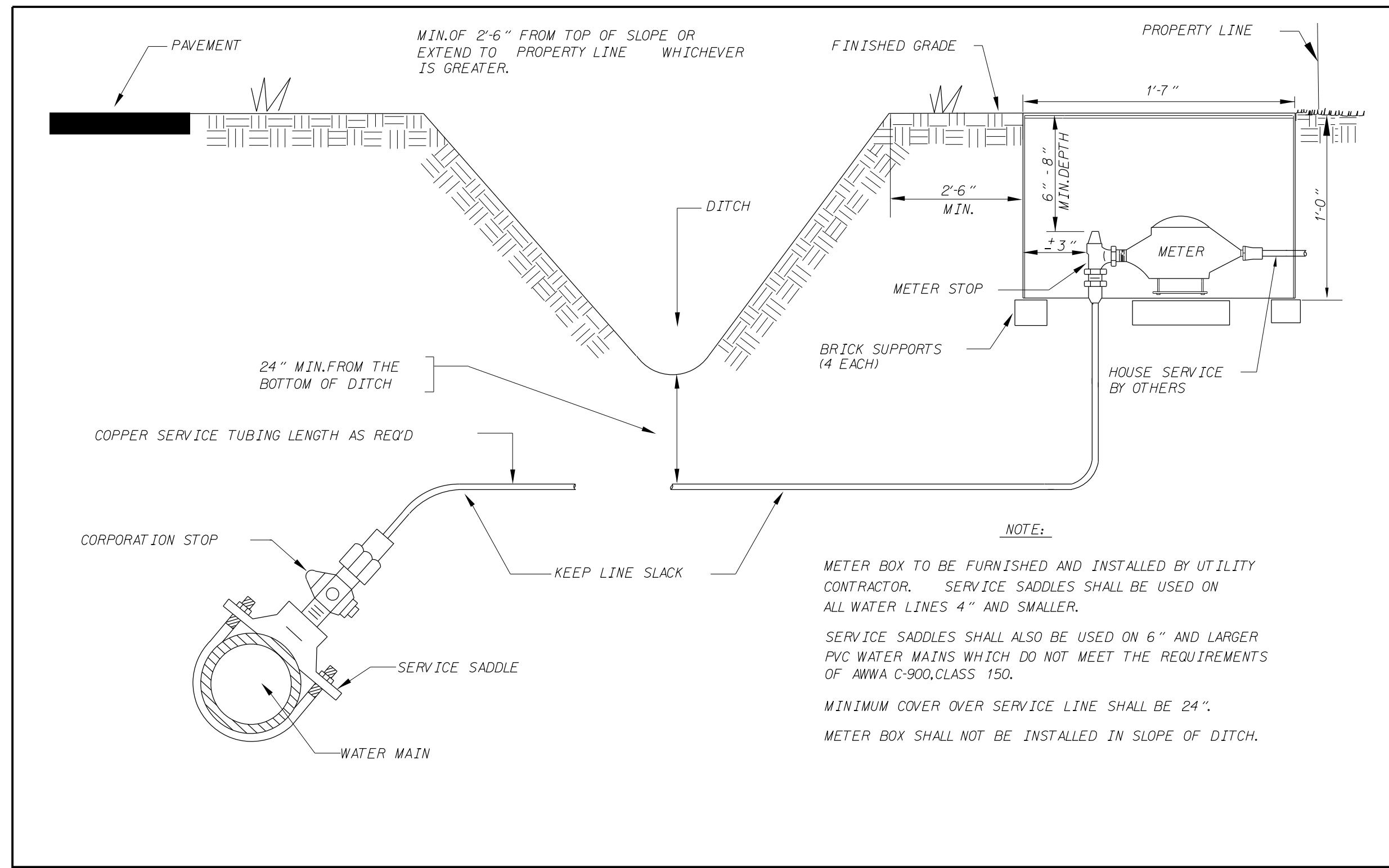
HINDE ENGINEERING
 License No. C-2639
 401 Harrison Oaks Blvd., Suite 220 Cary, NC 27513

**DOCUMENT NOT CONSIDERED FINAL
 UNLESS ALL SIGNATURES COMPLETED**

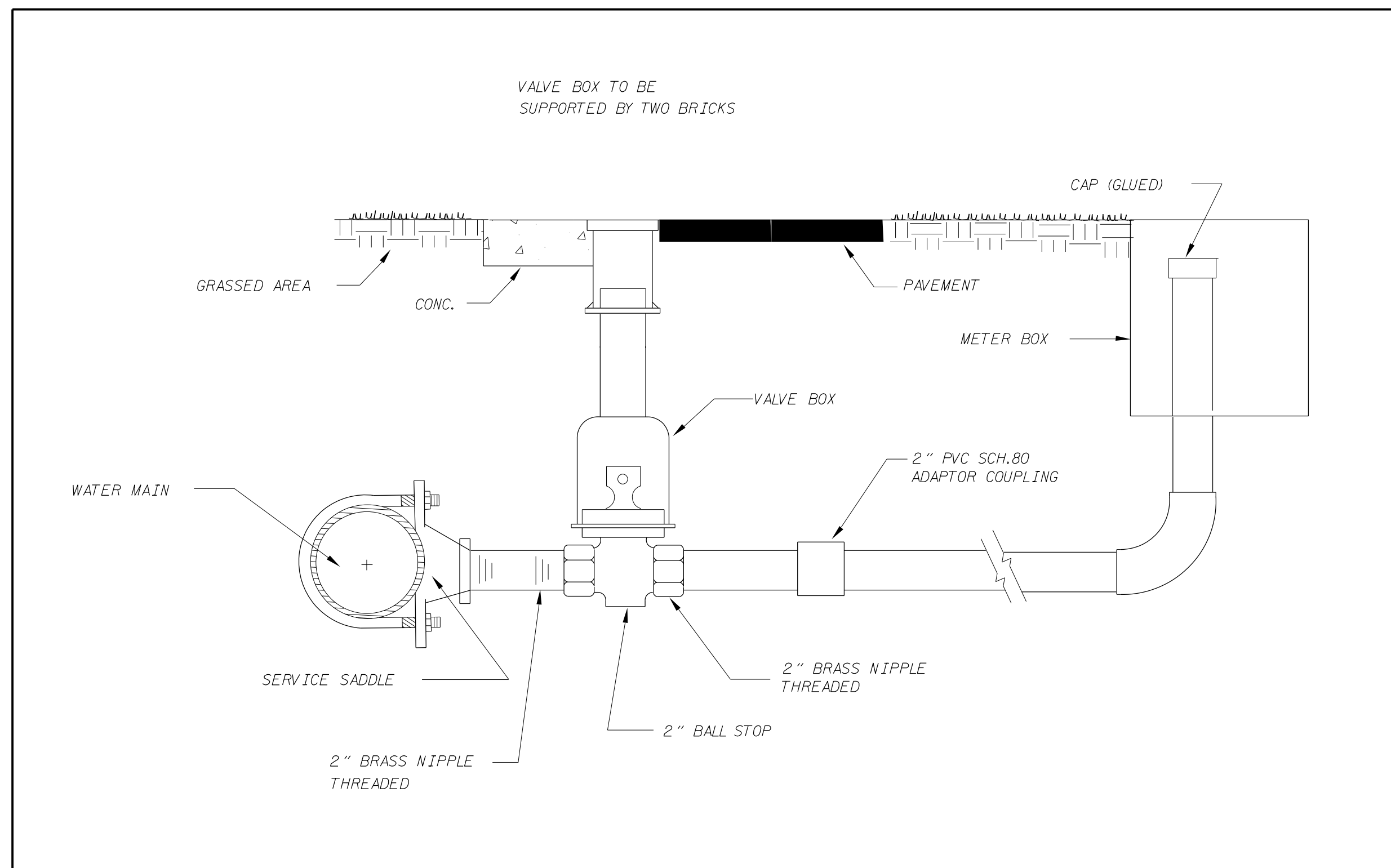
PROJECT REFERENCE NO. 17BP.2.R.92	SHEET NO. UC-3B
DESIGNED BY: JKC	
DRAWN BY: ASW	
CHECKED BY: CDB	
APPROVED BY: CLS	
REVISED:	
NORTH CAROLINA DEPARTMENT OF TRANSPORTATION UTILITIES ENGINEERING SEC. PHONE: (919) 707-6690 FAX: (919) 250-4151	
UTILITY CONSTRUCTION PLANS ONLY	

PROJECT TYPICAL DETAILS

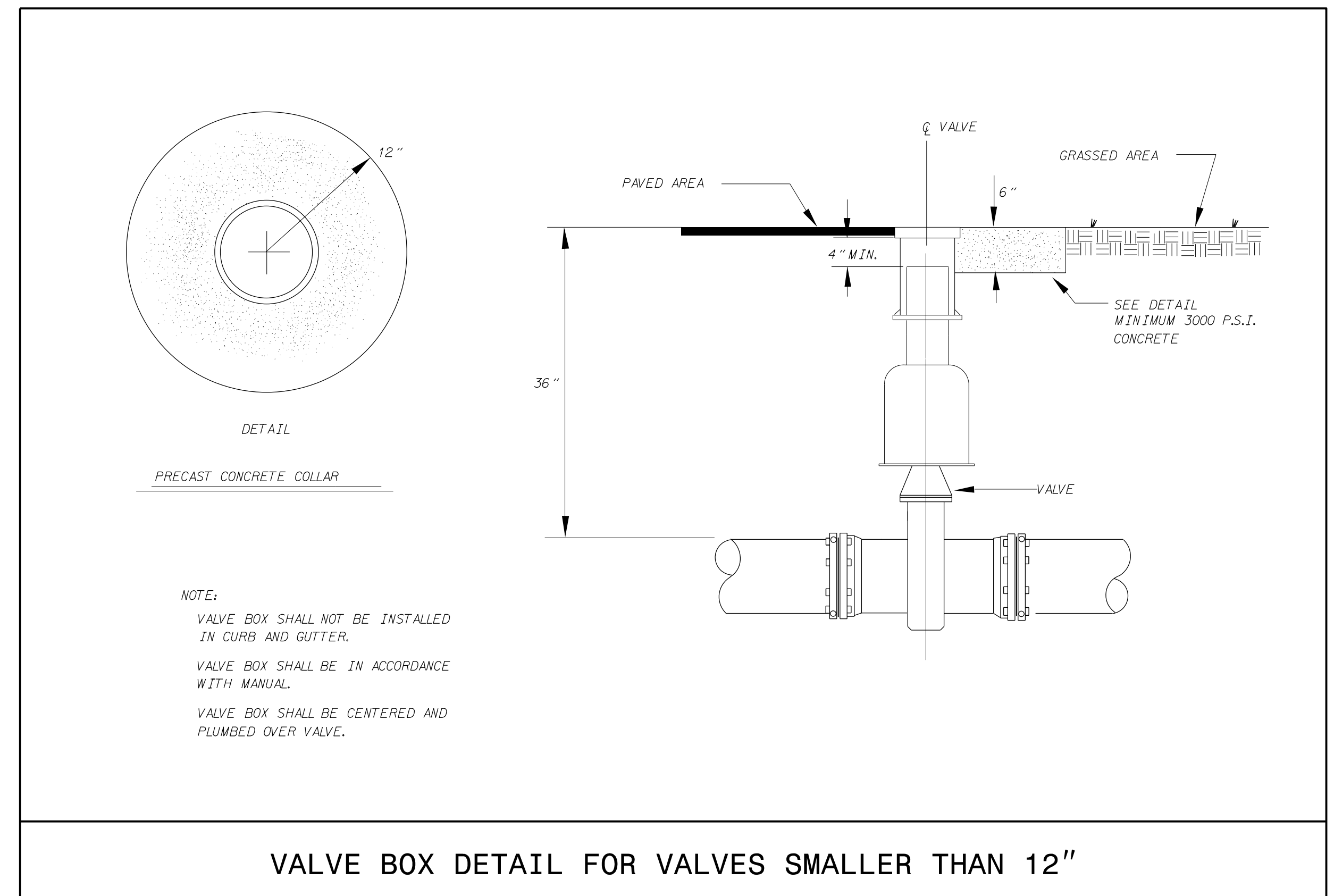
UTILITY CONSTRUCTION



1" WATER SERVICE DETAIL FOR AREAS WITHOUT CURB AND GUTTER



TYPICAL 1-1/2" AND 2" WATER SERVICE CONNECTION



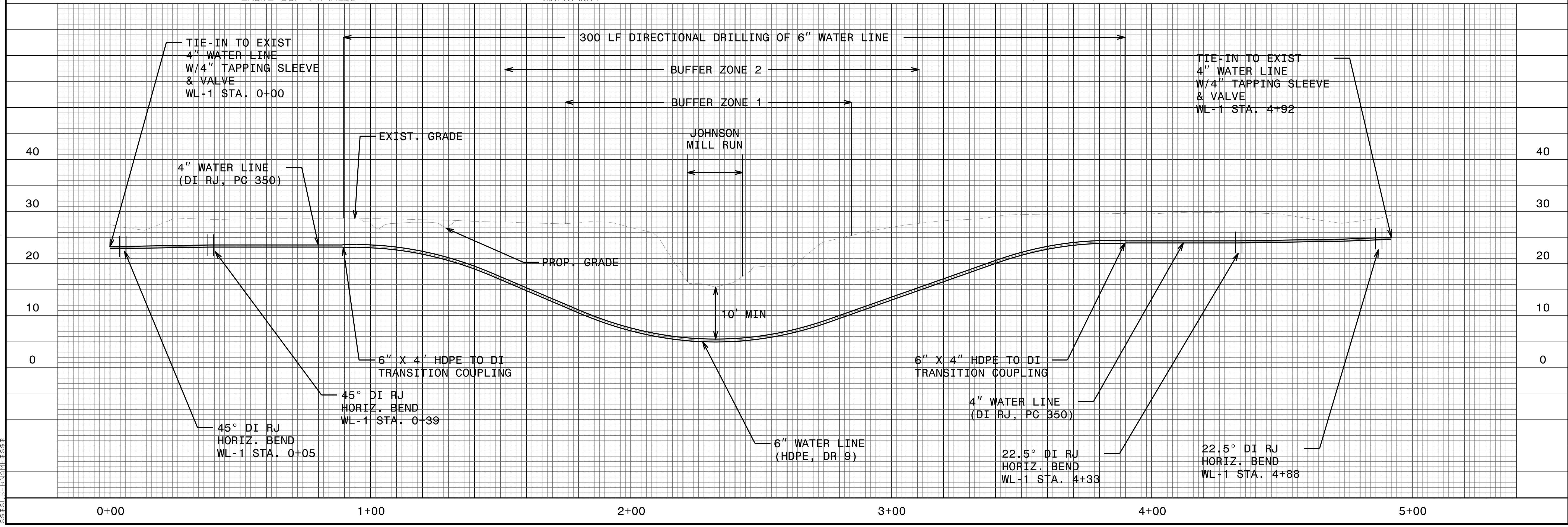
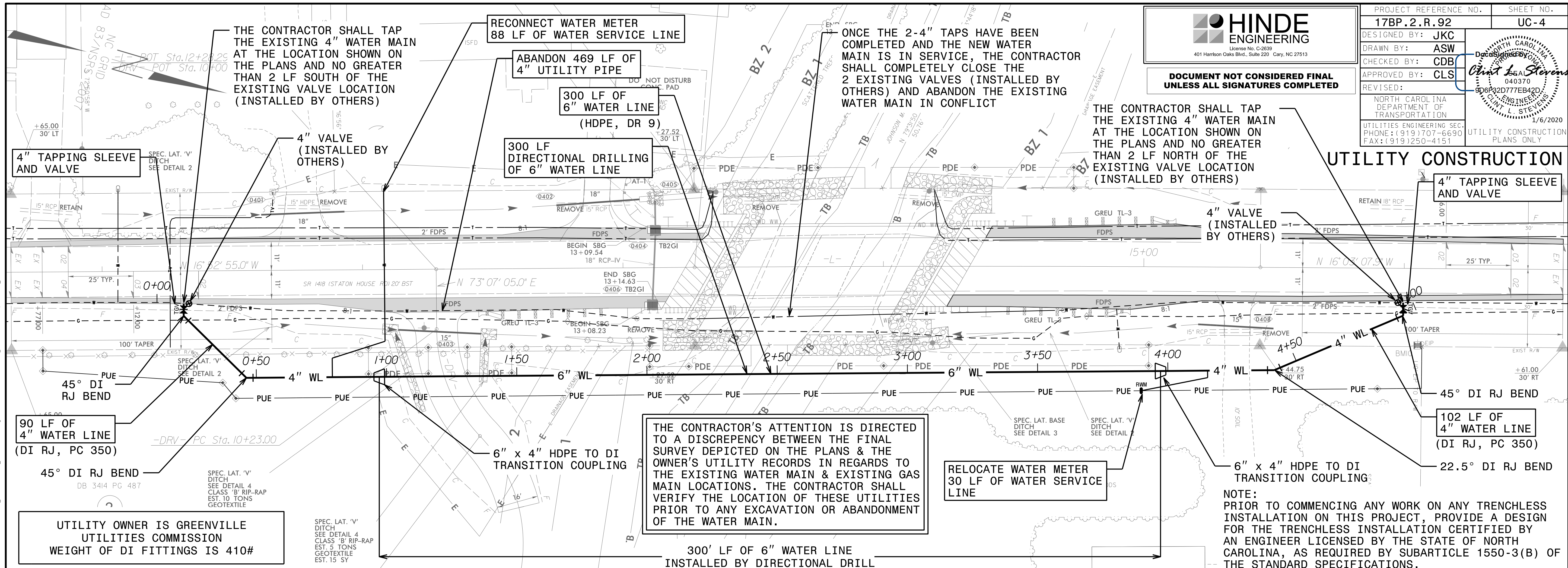
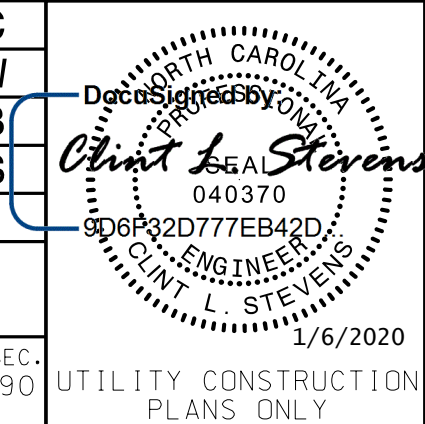
VALVE BOX DETAIL FOR VALVES SMALLER THAN 12"

C:\DEC-2019\1537\PROJECTS\2016\A2016703\00_TGS.Div-2.LIB.Replacement\A2016703\06_TGS.Div-2.LIB.B-4788\Design\Utilities\Engineering\UC\ProJ\B-4788.Ut.dtl\UC3B_psh.dgn
 12/11/2019 10:53:37 AM

HINDE ENGINEERING
 License No. C-2639
 401 Harrison Oaks Blvd., Suite 220 Cary, NC 27513

**DOCUMENT NOT CONSIDERED FINAL
 UNLESS ALL SIGNATURES COMPLETED**

PROJECT REFERENCE NO. 17BP.2.R.92	SHEET NO. UC-4
DESIGNED BY: JKC	DRAWN BY: ASW
CHECKED BY: CDB	APPROVED BY: CLS
REVISED:	
NORTH CAROLINA DEPARTMENT OF TRANSPORTATION	
UTILITIES ENGINEERING SEC. PHONE: (919) 707-6690 FAX: (919) 250-4151	
UTILITY CONSTRUCTION PLANS ONLY	



26 JAN 2020 11:27 PROJECTS\2016\A2016703.00.TGS.Dwg-2.LIB.B-4788\Design\Utilities\Engineering\UC\Proj\B-4788.Ut_rdy04_UC04_psh.dgn
 26 JAN 2020 11:27 PROJECTS\2016\A2016703.00.TGS.Dwg-2.LIB.B-4788\Design\Utilities\Engineering\UC\Proj\B-4788.Ut_rdy04_UC04_psh.dgn