

**This electronic collection of documents is provided
for the convenience of the user
and is Not a Certified Document –**

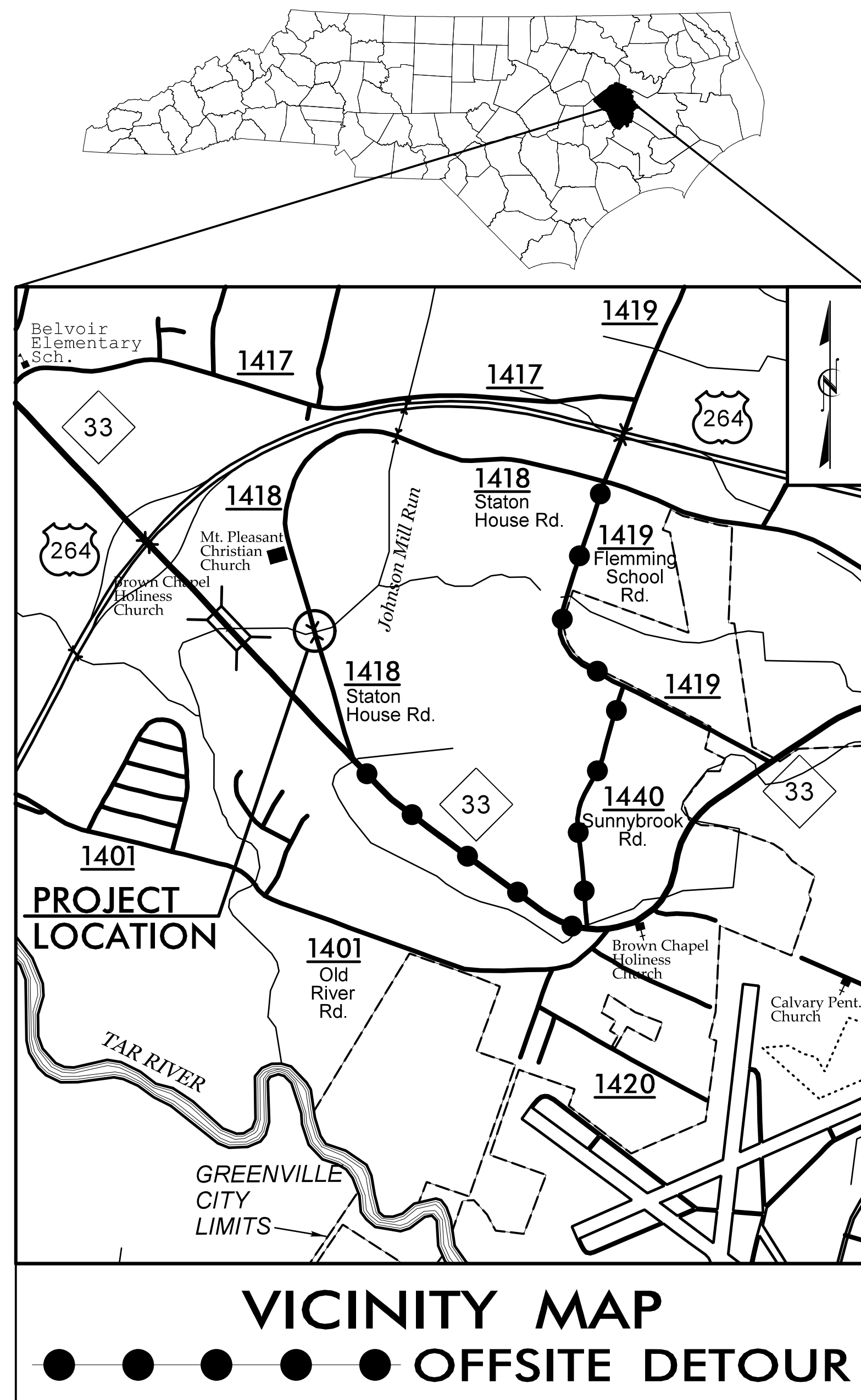
**The documents contained herein were originally issued
and sealed by the individuals whose names and license
numbers appear on each page, on the dates appearing
with their signature on that page.**

**This file or an individual page
shall not be considered a certified document.**

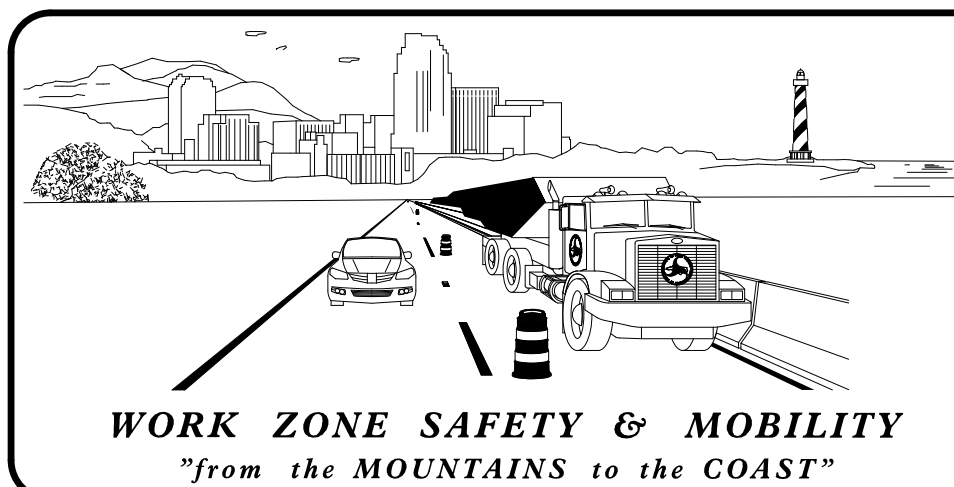
STATE OF NORTH CAROLINA
DIVISION OF HIGHWAYS

TRANSPORTATION MANAGEMENT PLAN

**PITT COUNTY
BRIDGE #730171**



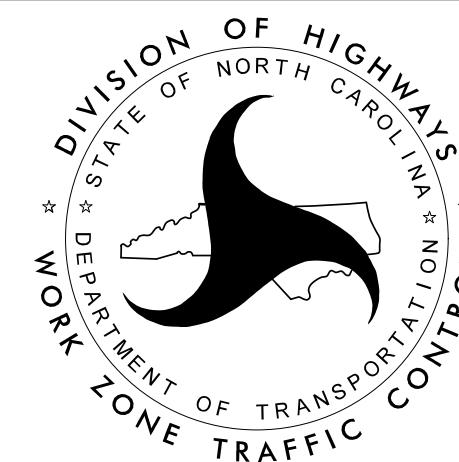
NCDOT CONTACT INFORMATION:
Phone: 919 707 6442 Fax: 919 250 4082
DAVID S. STUTTS, PE
SMU Project Engineer



PLAN PREPARED FOR N.C.D.O.T. BY:

TGS ENGINEERS
706 HILLSBOROUGH ST.
SUITE 200
RALEIGH, NC 27603
PH (919) 773-8887
CORP. LICENSE NO. : C-0275

TOMMY REGISTER, PE PROJECT ENGINEER
DESIGN ENGINEER



INDEX OF SHEETS

SHEET NO.	TITLE
TMP-1	TITLE SHEET, VICINITY MAP, INDEX OF SHEETS, LIST OF APPLICABLE ROADWAY STANDARD DRAWINGS, AND LEGEND
TMP-2	PHASING, GENERAL NOTES, AND DETOUR
TMP-3	GENERAL NOTES AND PHASING PLAN

ROADWAY STANDARD DRAWINGS

THE FOLLOWING ROADWAY STANDARDS AS SHOWN IN "ROADWAY STANDARD DRAWINGS" - PROJECT SERVICES UNIT - N.C. DEPARTMENT OF TRANSPORTATION - RALEIGH, N.C., DATED JANUARY 2018 ARE APPLICABLE TO THIS PROJECT AND BY REFERENCE HEREBY ARE CONSIDERED A PART OF THESE PLANS:

STD. NO.	TITLE
1101.01	WORK ZONE ADVANCE WARNING SIGNS
1101.03	TEMPORARY ROAD CLOSURES
1101.11	TRAFFIC CONTROL DESIGN TABLES
1110.01	STATIONARY WORK ZONE SIGNS
1110.02	PORTABLE WORK ZONE SIGNS
1145.01	BARRICADES
1165.01	WORK VEHICLE LIGHTING SYSTEMS AND TMA DELINEATION
1261.01	GUARDRAIL AND BARRIER DELINEATORS - INSTALLATION SPACING
1261.02	GUARDRAIL AND BARRIER DELINEATORS - TYPES AND MOUNTING
1262.01	GUARDRAIL END DELINEATION

NOTE: NCDOT DIVISION 2 WILL PROVIDE AND MAINTAIN ALL TEMPORARY ROAD CLOSURE AND DETOUR SIGNING AND DEVICES.

LEGEND

- GENERAL**
- ← DIRECTION OF TRAFFIC FLOW
 - ↔ DIRECTION OF PEDESTRIAN TRAFFIC FLOW
 - EXIST. PVMT.
 - NORTH ARROW
 - PROPOSED PVMT.
 - ~ TEMP. SHORING (LOCATION PURPOSES ONLY)
 - WORK AREA
- PAVEMENT MARKINGS**
- EXISTING LINES
 - TEMPORARY LINES
- TRAFFIC CONTROL DEVICES**
- ▩ BARRICADE (TYPE III)
- TEMPORARY SIGNING**
- ⊠ PORTABLE SIGN
 - ⊞ STATIONARY SIGN
 - ⊞ STATIONARY OR PORTABLE SIGN

DOCUMENT NOT CONSIDERED FINAL UNLESS ALL SIGNATURES COMPLETED

APPROVED: *Tommy Register, PE*
DATE: 3/3/2021 | 1:30 PM
SEAL
NORTH CAROLINA PROFESSIONAL ENGINEER
SEAL 028392
TOMMY T. REGISTER

3/2/2021 X:\NCDOT\B-4788\TrafficControl\TCP\B4788_TC_TMP_01TSH.dgn User:bevans

SHEET NO. TMP-1
PROJECT: 17BP.2.R.92

GENERAL NOTES

CHANGES MAY BE REQUIRED WHEN PHYSICAL DIMENSIONS IN THE DETAIL DRAWINGS, STANDARD DETAILS, AND ROADWAY DETAILS ARE NOT ATTAINABLE TO MEET FIELD CONDITIONS OR RESULT IN DUPLICATE OR UNDESIRED OVERLAPPING OF DEVICES. MODIFICATION MAY INCLUDE: MOVING, SUPPLEMENTING, COVERING, OR REMOVAL OF DEVICES AS DIRECTED BY THE ENGINEER.

THE FOLLOWING GENERAL NOTES APPLY AT ALL TIMES FOR THE DURATION OF THE CONSTRUCTION PROJECT EXCEPT WHEN OTHERWISE NOTED IN THE PLAN OR DIRECTED BY THE ENGINEER.

TRAFFIC PATTERN ALTERATIONS

- A) NOTIFY THE ENGINEER THIRTY (30) CALENDAR DAYS PRIOR TO ANY TRAFFIC PATTERN ALTERATION. IN ORDER TO HAVE TIME TO ADEQUATELY REROUTE SCHOOL BUSESSES, PITT COUNTY SCHOOLS WILL BE CONTACTED AT (252-916-0944) AT LEAST ONE MONTH PRIOR TO ROAD CLOSURE. PITT COUNTY EMERGENCY SERVICES WILL BE CONTACTED AT (252-902-3652) AT LEAST ONE MONTH PRIOR TO ROAD CLOSURE TO MAKE THE NECESSARY TEMPORARY REASSIGNMENTS TO PRIMARY RESPONSE UNITS.

SIGNING

- B) ENSURE ALL NECESSARY SIGNING IS IN PLACE PRIOR TO ALTERING ANY TRAFFIC PATTERN.

PAVEMENT MARKINGS AND MARKERS

- C) DIVISION 2 WILL INSTALL PAVEMENT MARKINGS ON THE FINAL SURFACE AS FOLLOWS:

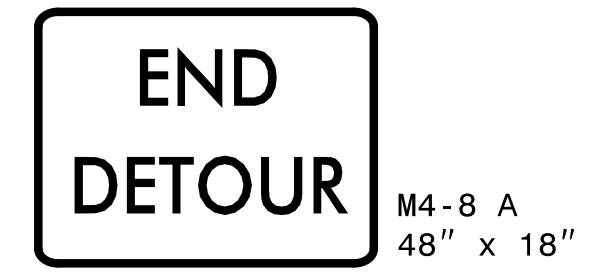
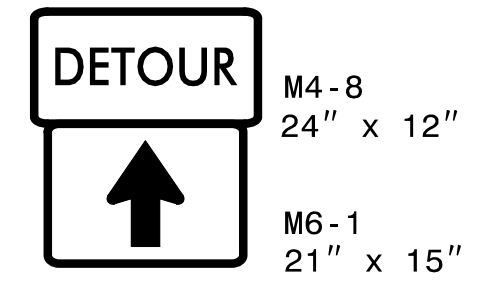
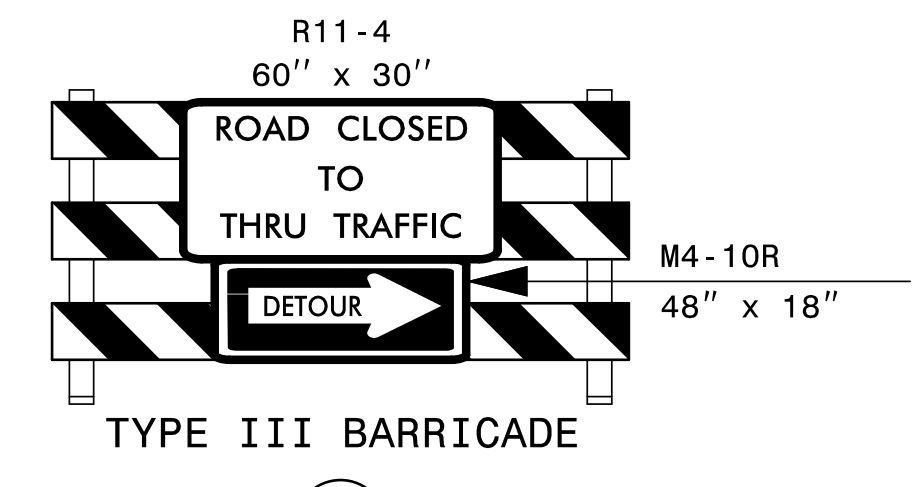
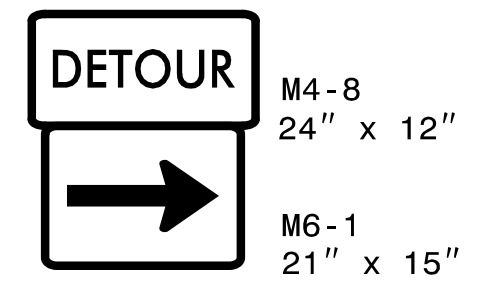
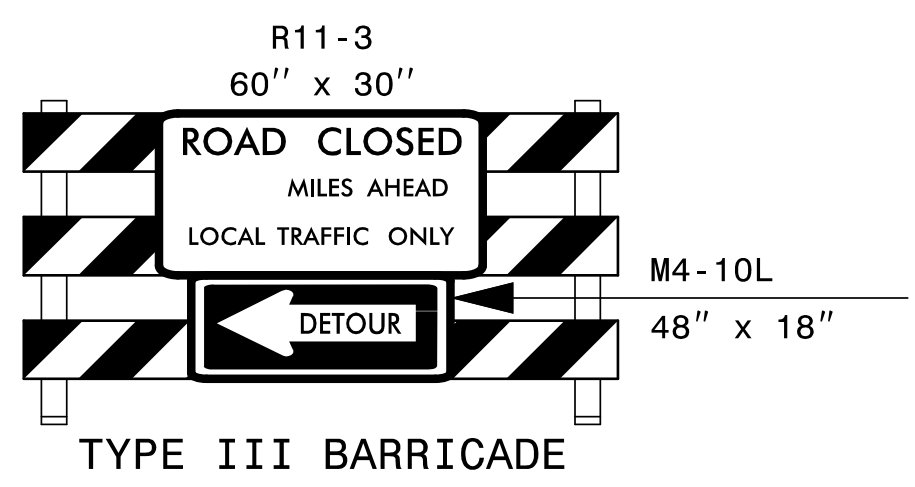
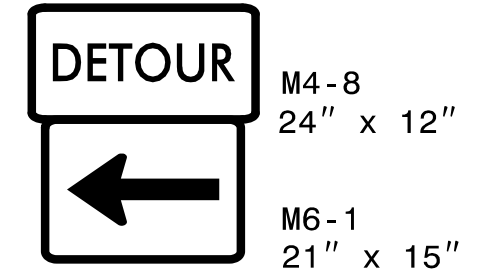
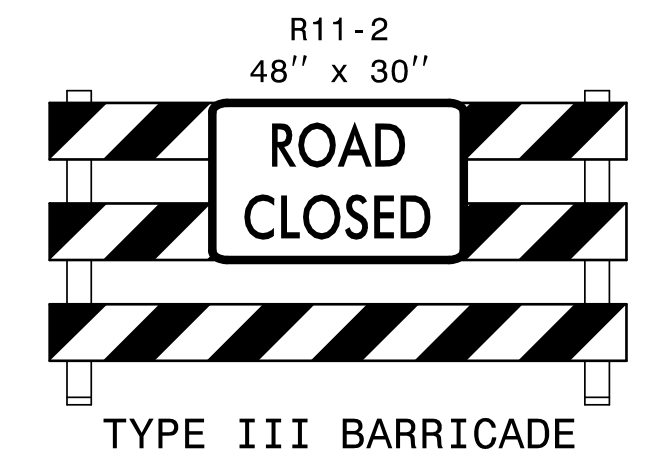
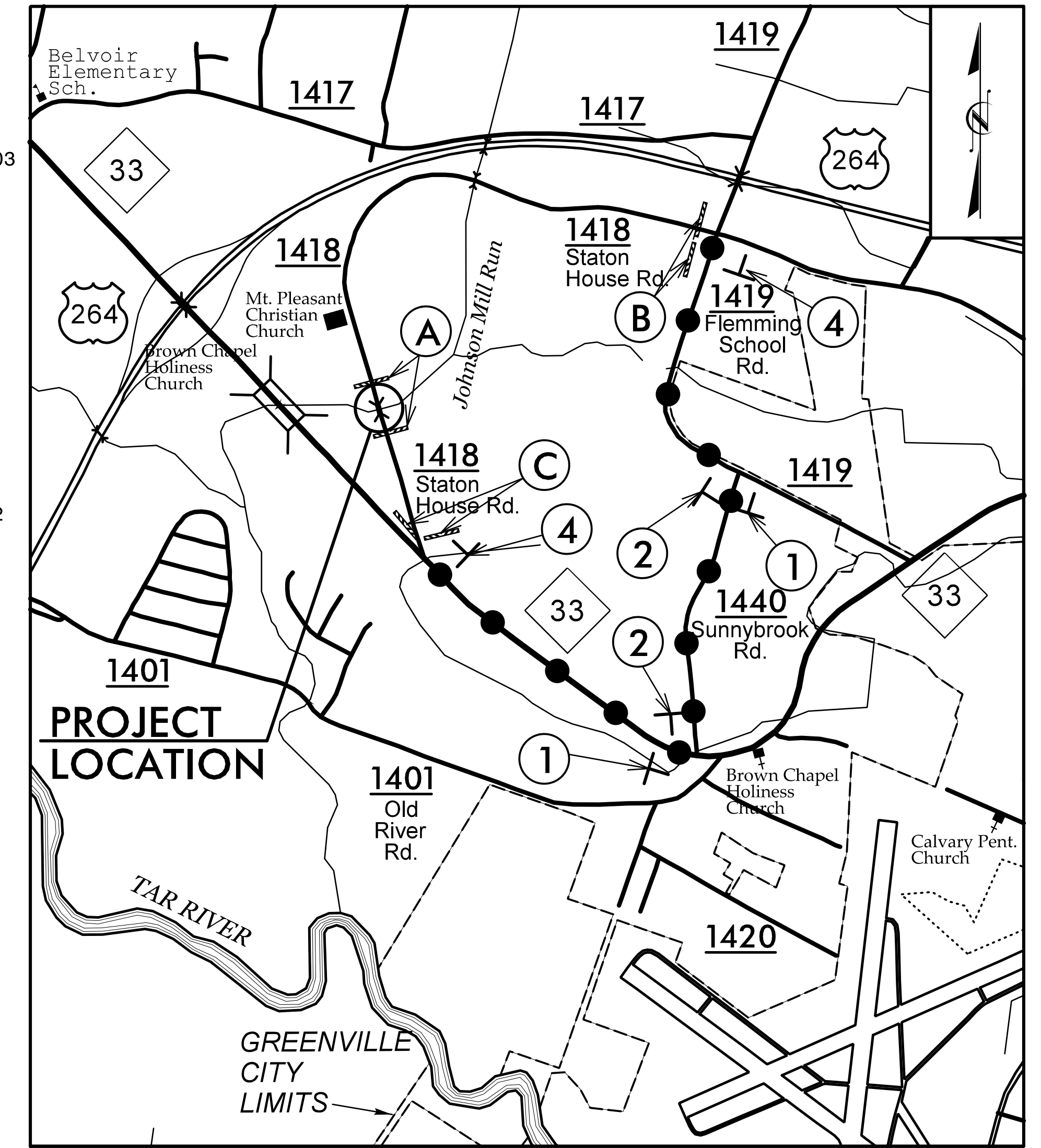
ROAD NAME	MARKING	MARKERS
SR 1418 (STATON HOUSE RD)	THERMOPLASTIC	RAISED

- D) DIVISION 2 WILL TIE PROPOSED PAVEMENT MARKING LINES TO EXISTING PAVEMENT MARKING LINES.
- E) DIVISION 2 WILL REMOVE ANY CONFLICTING MARKINGS OR MARKERS BEFORE SHIFTING TRAFFIC TO A NEW PATTERN.
- F) PASSING ZONE WILL BE DETERMINED IN THE FIELD AND MUST BE APPROVED BY THE ENGINEER.

- G) NCDOT DIVISION 2 WILL INSTALL AND MAINTAIN THE PROJECT DETOUR AND TYPE III BARRICADES AT THE PROJECT LIMITS. CONTACT JEFF DUNNING AT 252-439-2950 TWO WEEKS PRIOR TO CLOSING THE ROAD FOR DETOUR INSTALLATION.

PHASING

- STEP 1: NCDOT DIVISION 2 WILL INSTALL ALL DETOUR ROUTE SIGNS USING RSD 1101.01 AND AS SHOWN.
- STEP 2: NCDOT DIVISION 2 WILL INSTALL TYPE III BARRICADES AND SIGNS, AND CLOSE SR 1418 (STATON HOUSE RD) TO TRAFFIC USING RSD 1101.03 (SHEET 1 OF 9) AND AS SHOWN.
- NCDOT DIVISION 2 WILL PLACE TRAFFIC ON DETOUR.
- STEP 3: DEMOLISH AND REMOVE THE EXISTING BRIDGE OVER JOHNSON MILL RUN. CONSTRUCT THE NEW BRIDGE OVER JOHNSON MILL RUN FROM -L- STA. 13+34.63 TO 14+22.37.
- CONSTRUCT THE ROADWAY ON SR 1418 (STATON HOUSE RD) FROM -L- STA. 10+65.00 TO -L- STA. 13+34.63 (BEGIN BRIDGE) AND FROM -L- STA. 14+22.37 (END BRIDGE) TO 16+61.00 UP TO AND INCLUDING THE FINAL LAYER OF SURFACE COURSE.
- STEP 4: UPON COMPLETION OF BRIDGE, APPROACHES, AND ROADWAY, DIVISION 2 WILL PLACE FINAL PAVEMENT MARKINGS AND MARKERS IN ACCORDANCE WITH RSD 1205.01, 1205.02, 1205.12, 1250.01, AND 1251.01. NCDOT DIVISION 2 WILL REMOVE BARRICADES, SIGNS, AND ALL OTHER TRAFFIC CONTROL DEVICES AND OPEN SR 1418 (STATON HOUSE RD) TO TRAFFIC IN FINAL PATTERN.



* PLACE SIGN ③ ON RT SHOULDER FACING TRAFFIC

ESTIMATED ADDITIONAL SIGNS REQUIRED PER RSD 1101.03:
 - W20-3 (18 EACH)
 - W20-2 (2 EACH)
 - SP-4 (6 EACH)

SEE RSD FOR SIGN PLACEMENT AND SIGN WORDING REQUIREMENTS.

APPROVED: *Tommy Aguilera, PE*
 DATE: 3/3/2021 | 1:30 PM PM
 SEAL

PROFESSIONAL SEAL
 028392
 ENGINEER
 CLYTON T. REGISTER

DOCUMENT NOT CONSIDERED FINAL UNLESS ALL SIGNATURES COMPLETED

DIVISION OF HIGHWAYS
 NORTH CAROLINA
 DEPARTMENT OF TRANSPORTATION
 WORK ZONE TRAFFIC CONTROL

GENERAL NOTES,
 PHASING,
 AND DETOUR

3/3/2021
 X:\NCDOT\AB-4788\TrafficControl\TCP\4788_TC_TMP_02.dgn
 User:bevans

