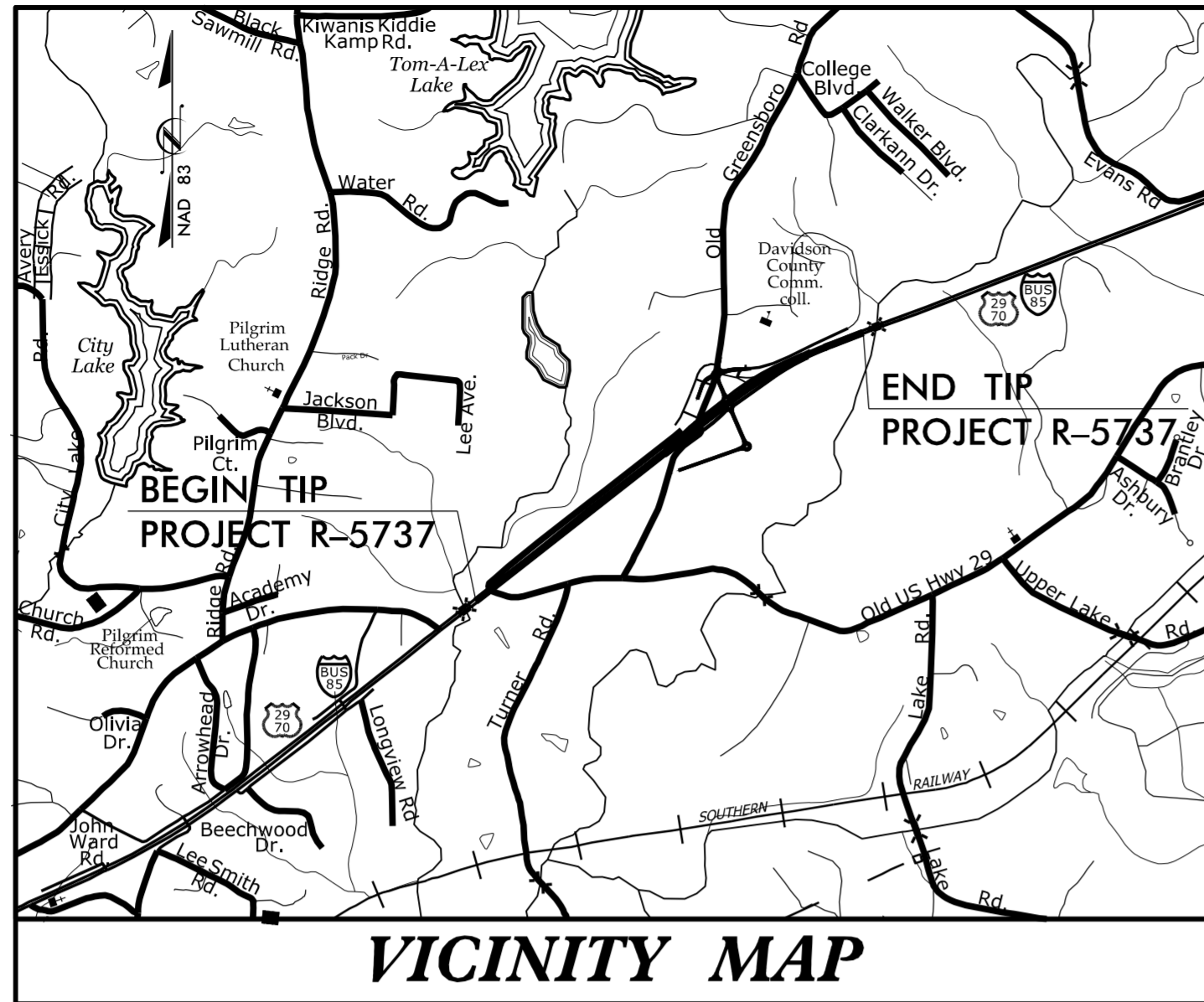


**This electronic collection of documents is provided  
for the convenience of the user  
and is Not a Certified Document –**

**The documents contained herein were originally issued  
and sealed by the individuals whose names and license  
numbers appear on each page, on the dates appearing  
with their signature on that page.**

**This file or an individual page  
shall not be considered a certified document.**

**TIP PROJECT: R-5737**



STATE OF NORTH CAROLINA  
DIVISION OF HIGHWAYS

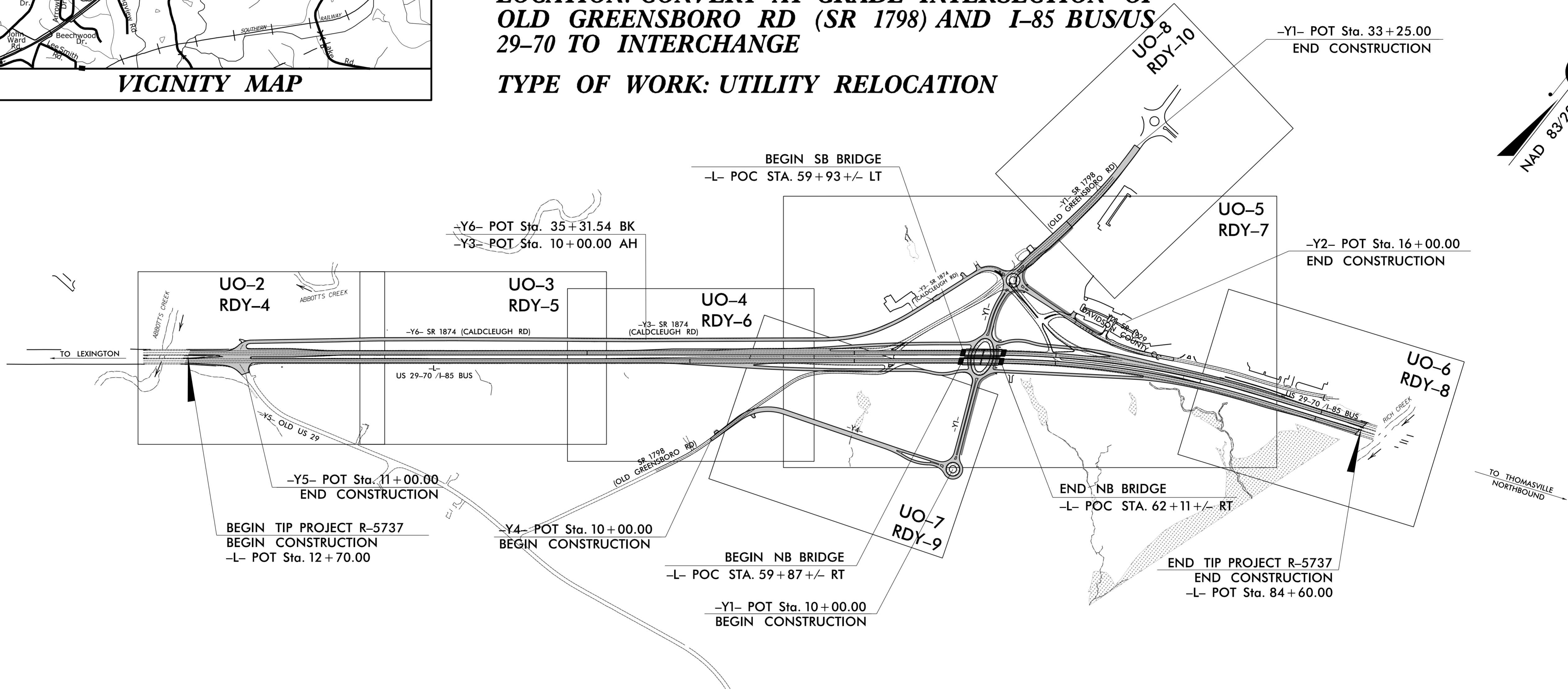
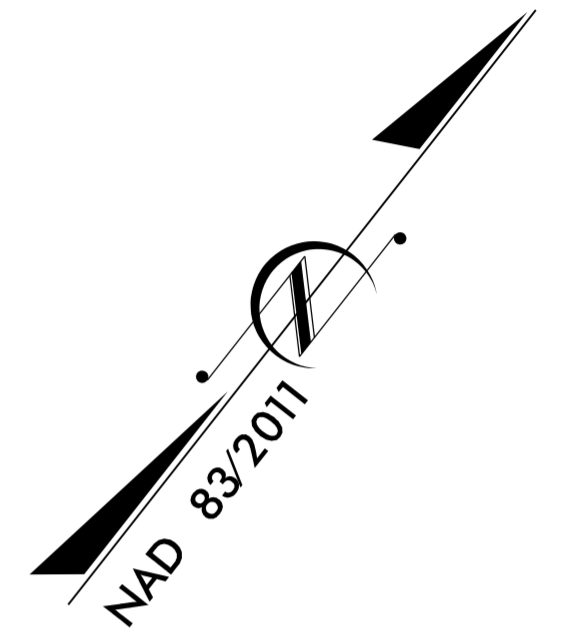
**UTILITIES BY OTHERS PLANS  
DAVIDSON COUNTY**

**LOCATION: CONVERT AT-GRADE INTERSECTION OF  
OLD GREENSBORO RD (SR 1798) AND I-85 BUS/US  
29-70 TO INTERCHANGE**

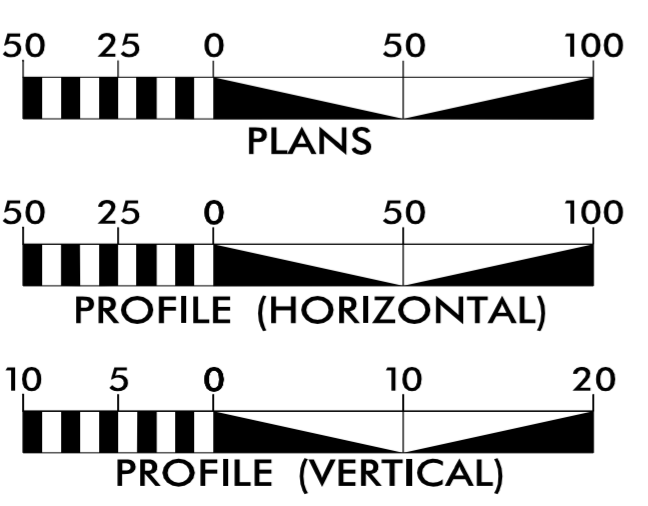
**TYPE OF WORK: UTILITY RELOCATION**

T.I.P. NO.	SHEET NO.
R-5737	UO-1

**NOTE:**  
ALL UTILITY WORK SHOWN ON THIS SHEET WILL BE DONE BY OTHERS. NO PAYMENT WILL BE MADE TO THE CONTRACTOR FOR UTILITY WORK SHOWN ON THIS SHEET.



**GRAPHIC SCALES**



**INDEX OF SHEETS**

SHEET NO.:	DESCRIPTION:
UO-1	TITLE SHEET
UO-1A	DETOUR SHEET LAYOUT
UO-2 THRU UO-8	UBO PLAN SHEETS
UO-9 THRU UO-13	DETOUR UBO PLAN SHEETS

**UTILITY OWNERS WITH CONFLICTS**

- (A) POWER - DUKE ENERGY
- (B) POWER - ENERGY UNITED
- (C) SEWER - SPECTRUM
- (D) COMMUNICATIONS - NORTH STATE COMMUNICATIONS
- (E) COMMUNICATIONS - SPECTRUM
- (F) COMMUNICATIONS - MCI (VERIZON)
- (G) COMMUNICATIONS - WINDSTREAM
- (H) GAS - CITY OF LEXINGTON

PREPARED IN THE OFFICE OF:

**CH ENGINEERING**

3220 GLEN ROYAL RD. RALEIGH, NC 27617  
TELE 919.788.0224 FAX 919.788.0232  
NC LICENSE #P-0189

**UTILITIES PROJECT ENGINEER**  
Mary Jo Lee, P.E.

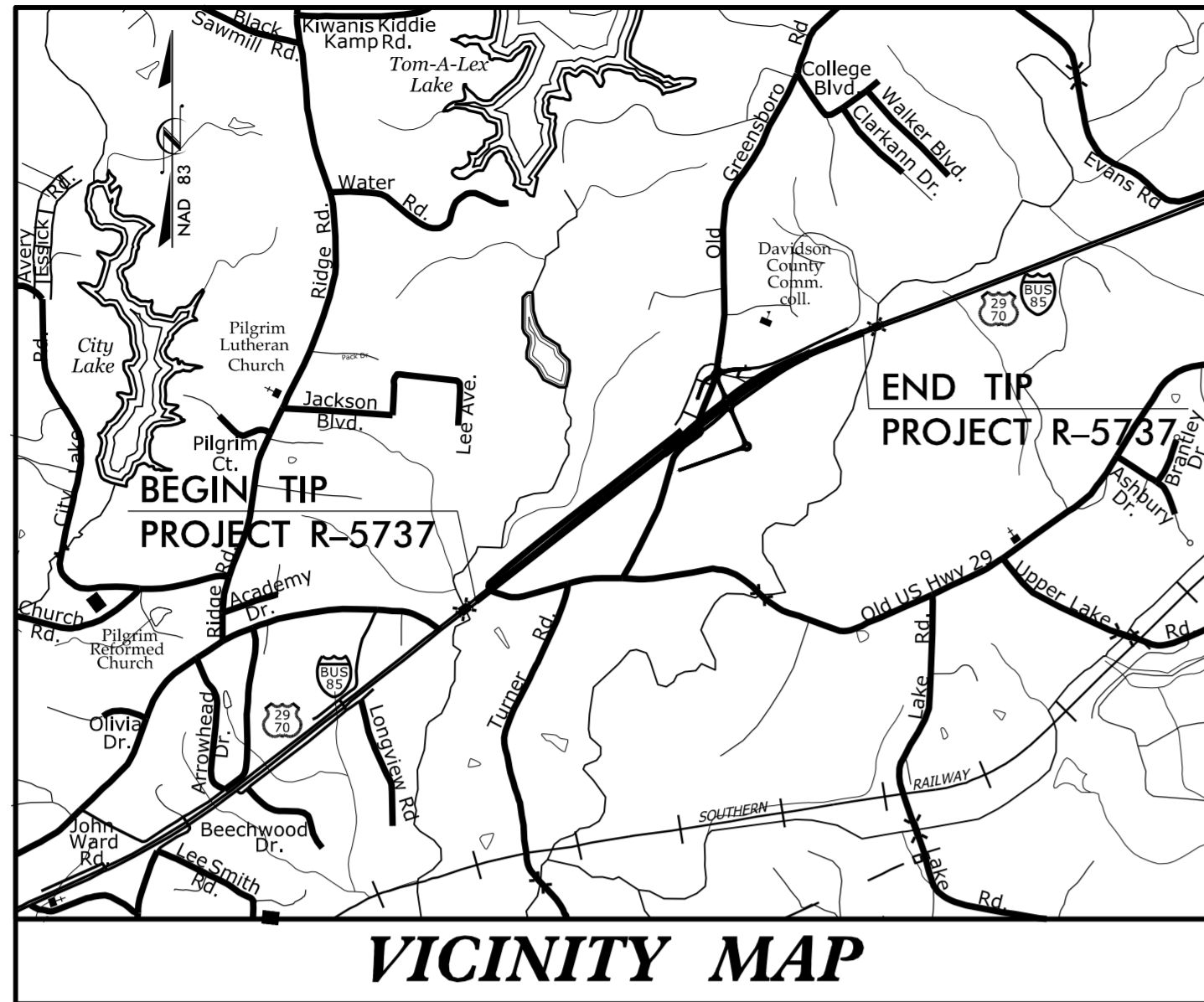
**DIVISION OF HIGHWAYS  
DIVISION 9**

375 SILAS CREEK PARKWAY  
WINSTON SALEM, 27127

DAVID TRANTHAM DIVISION UTILITY ENGINEER  
LYNN BASINGER DIVISION UTILITY COORDINATOR  
MATT JONES DIVISION PROJECT ENGINEER  
DIVISION CONTACT #4

8/9/2021 R:\Utilities\Engineering\UBO\Proj\NR5737\_ut\_tsn\_U001\_psh.dgn USERNAME

TIP PROJECT: R-5737

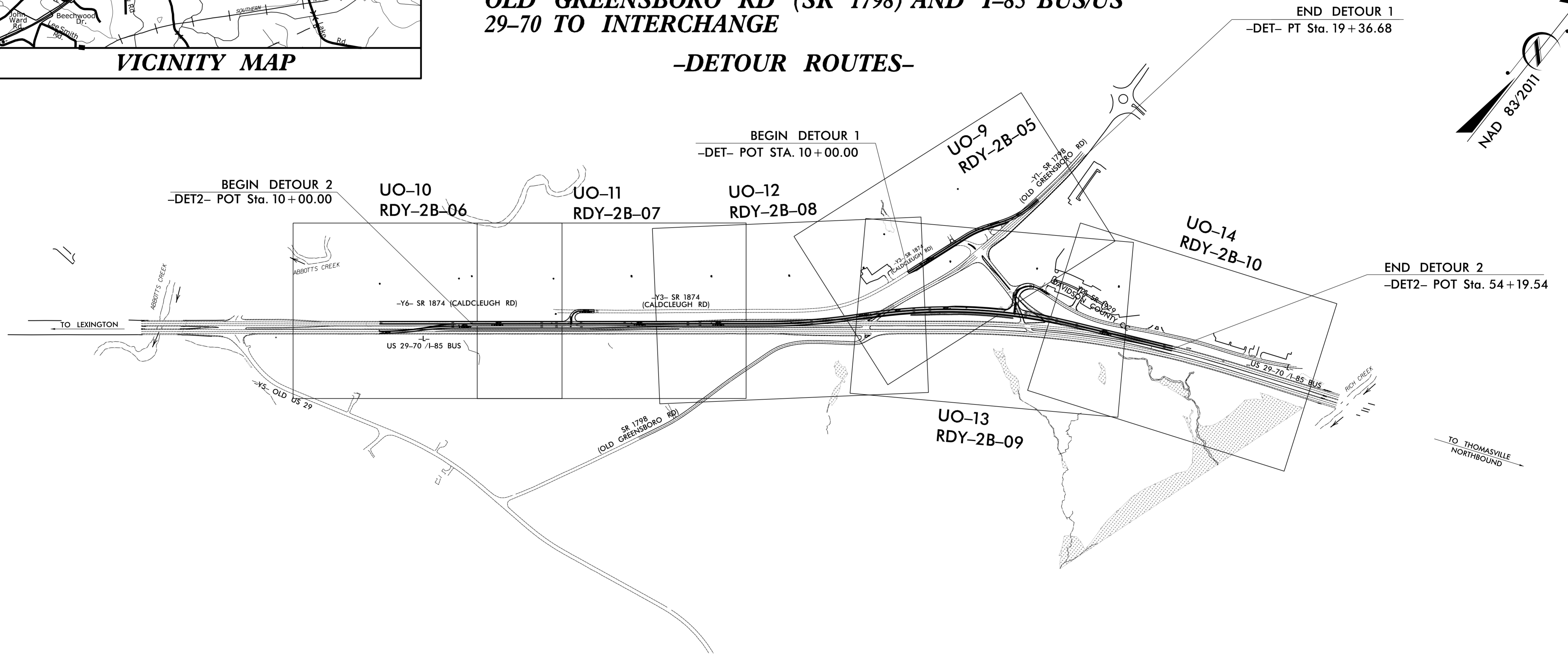


STATE OF NORTH CAROLINA  
DIVISION OF HIGHWAYS

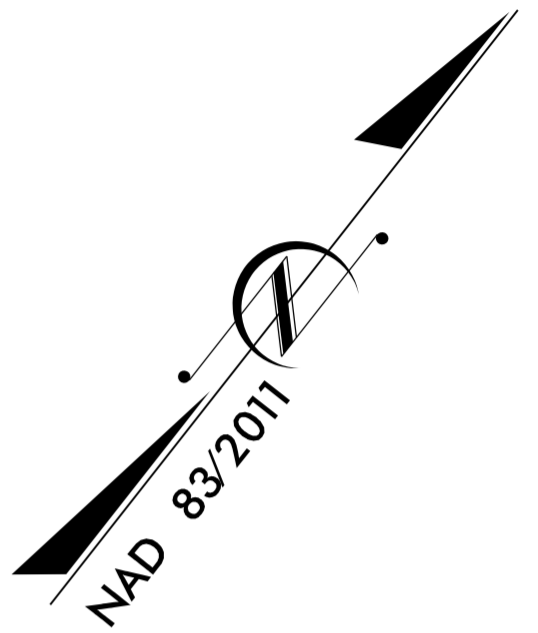
UTILITIES BY OTHERS PLANS  
DAVIDSON COUNTY

LOCATION: CONVERT AT-GRADE INTERSECTION OF  
OLD GREENSBORO RD (SR 1798) AND I-85 BUS/US  
29-70 TO INTERCHANGE

-DETOUR ROUTES-



NOTE:  
ALL UTILITY WORK SHOWN ON THIS SHEET WILL BE DONE BY OTHERS.  
NO PAYMENT WILL BE MADE TO THE CONTRACTOR FOR UTILITY WORK SHOWN ON THIS SHEET.



GRAPHIC SCALES



PREPARED IN THE OFFICE OF:  
**CH ENGINEERING**  
3220 GLEN ROYAL RD. RALEIGH, NC 27617  
TELE 919.788.0224 FAX 919.788.0232  
NC LICENSE #P-0189

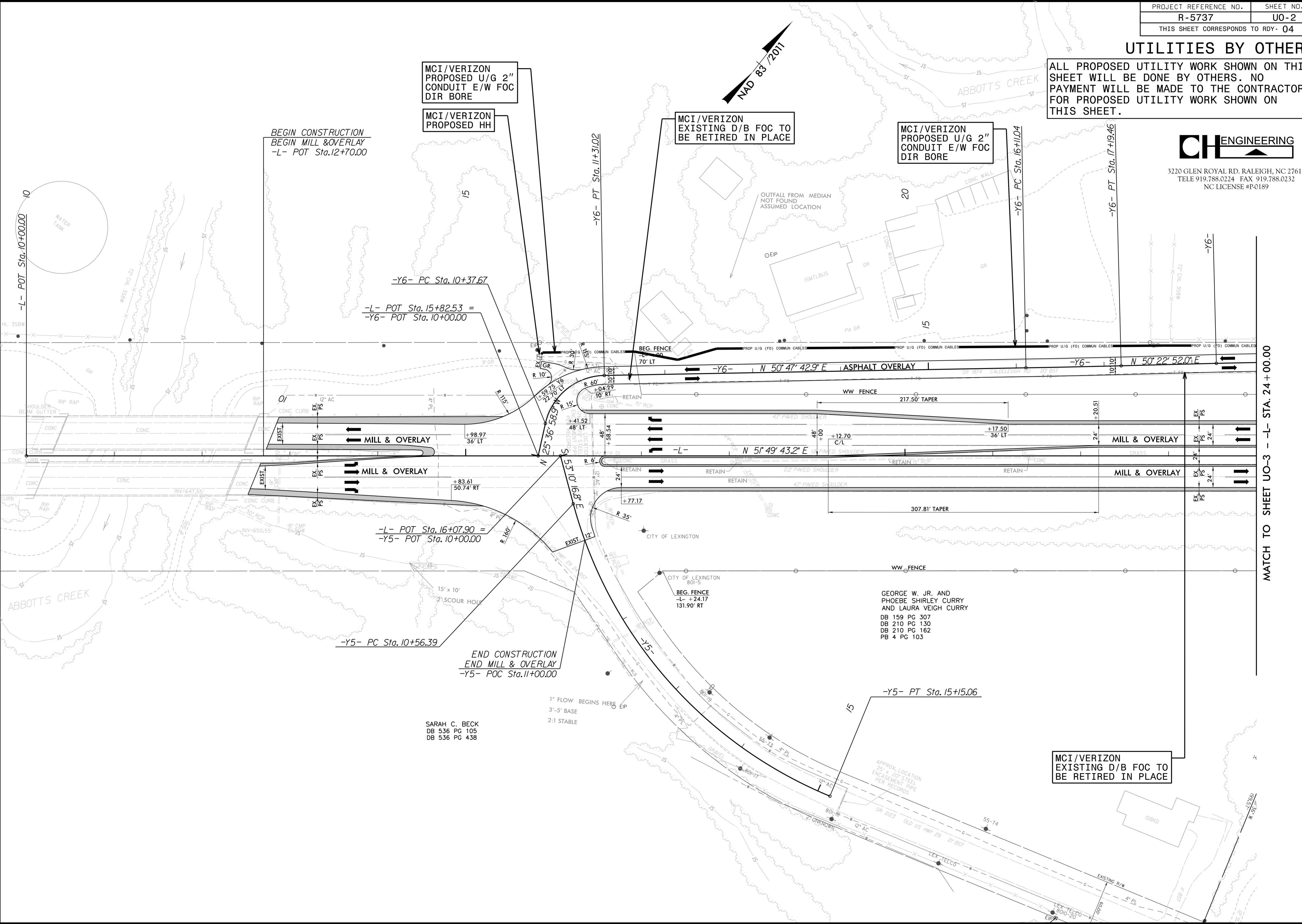
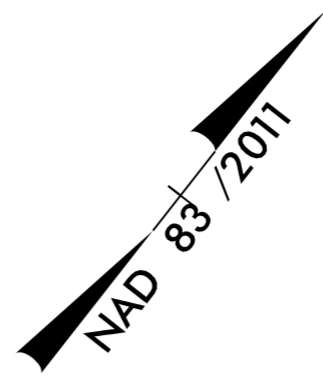
UTILITIES PROJECT ENGINEER  
Mary Jo Lee, P.E.

### UTILITIES BY OTHERS

ALL PROPOSED UTILITY WORK SHOWN ON THIS SHEET WILL BE DONE BY OTHERS. NO PAYMENT WILL BE MADE TO THE CONTRACTOR FOR PROPOSED UTILITY WORK SHOWN ON THIS SHEET.



3220 GLEN ROYAL RD. RALEIGH, NC 27617  
 TELE 919.788.0224 FAX 919.788.0232  
 NC LICENSE #P0189



MCI/VERIZON  
 PROPOSED U/G 2"  
 CONDUIT E/W FOC  
 DIR BORE

MCI/VERIZON  
 PROPOSED HH

MCI/VERIZON  
 EXISTING D/B FOC TO  
 BE RETIRED IN PLACE

MCI/VERIZON  
 PROPOSED U/G 2"  
 CONDUIT E/W FOC  
 DIR BORE

MCI/VERIZON  
 EXISTING D/B FOC TO  
 BE RETIRED IN PLACE

BEGIN CONSTRUCTION  
 BEGIN MILL & OVERLAY  
 -L- POT Sta. 12+70.00

END CONSTRUCTION  
 END MILL & OVERLAY  
 -Y5- POC Sta. 11+00.00

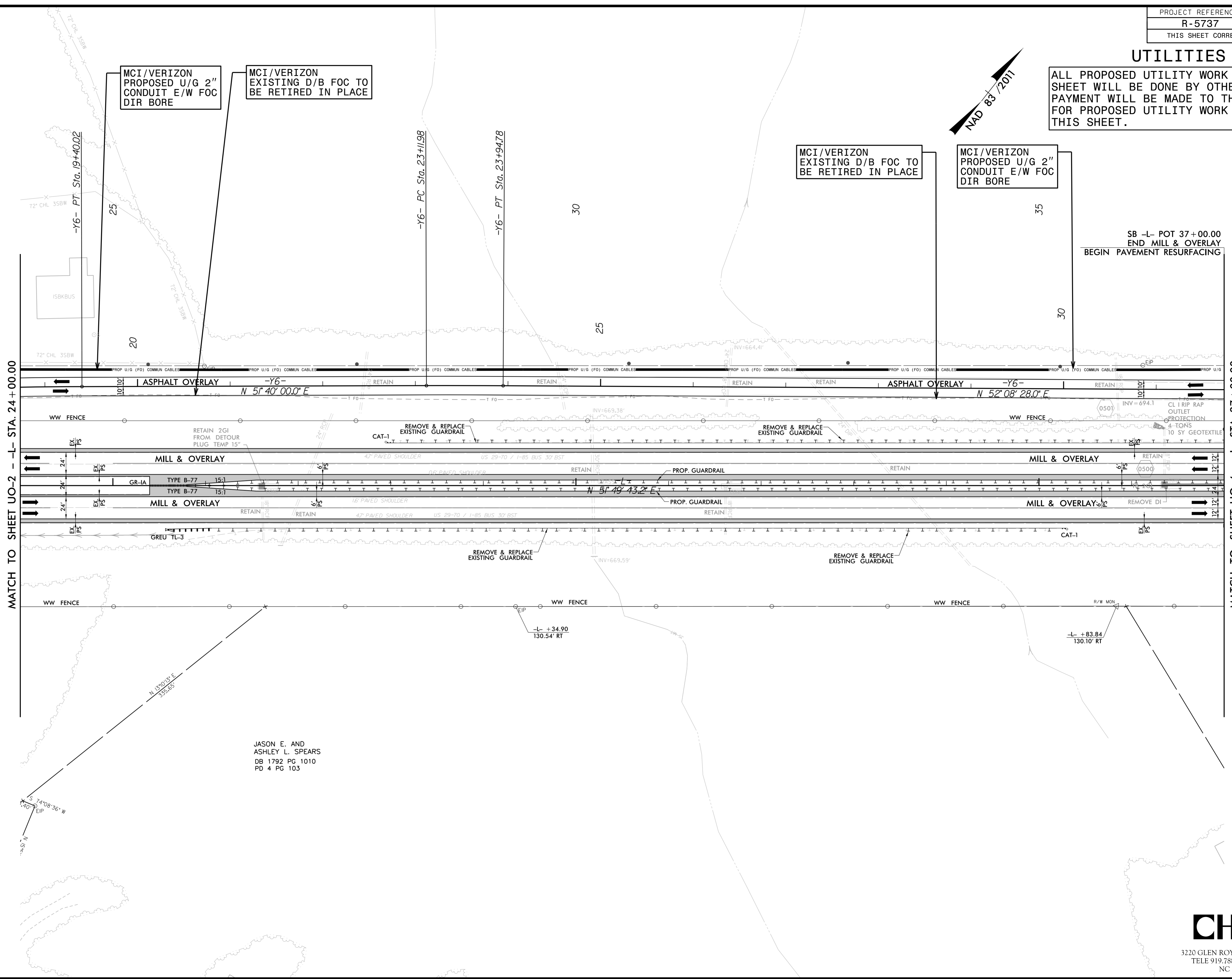
SARAH C. BECK  
 DB 536 PG 105  
 DB 536 PG 438

MATCH TO SHEET U0-3 - L- STA. 24+00.00

8/6/2021 C:\Users\james\Engineering\UBD\Proje\N5737\ut\_rdy4\_U002.psh.dgn

### UTILITIES BY OTHERS

ALL PROPOSED UTILITY WORK SHOWN ON THIS SHEET WILL BE DONE BY OTHERS. NO PAYMENT WILL BE MADE TO THE CONTRACTOR FOR PROPOSED UTILITY WORK SHOWN ON THIS SHEET.

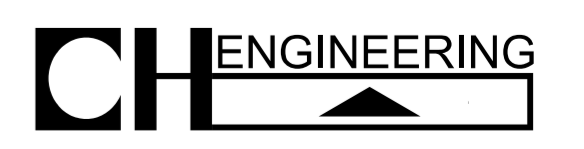


MATCH TO SHEET UO-2 --L- STA. 24+00.00

MATCH TO SHEET UO-4 --L- STA. 37+00.00

JASON E. AND  
ASHLEY L. SPEARS  
DB 1792 PG 1010  
PD 4 PG 103

8/6/2021  
C:\Users\jason\OneDrive\Engineering\UBD\Projects\R5737\ut\_rdy5\_U003.psh.dgn



3220 GLEN ROYAL RD. RALEIGH, NC 27617  
TELE 919.788.0224 FAX 919.788.0232  
NC LICENSE #P0189

### UTILITIES BY OTHERS

ALL PROPOSED UTILITY WORK SHOWN ON THIS SHEET WILL BE DONE BY OTHERS. NO PAYMENT WILL BE MADE TO THE CONTRACTOR FOR PROPOSED UTILITY WORK SHOWN ON THIS SHEET.



3220 GLEN ROYAL RD. RALEIGH, NC 27617  
 TELE 919.788.0224 FAX 919.788.0232  
 NC LICENSE #P-0189

MCI/VERIZON EXISTING D/B FOC TO BE RETIRED IN PLACE

MCI/VERIZON PROPOSED U/G 2" CONDUIT E/W FOC DIR BORE

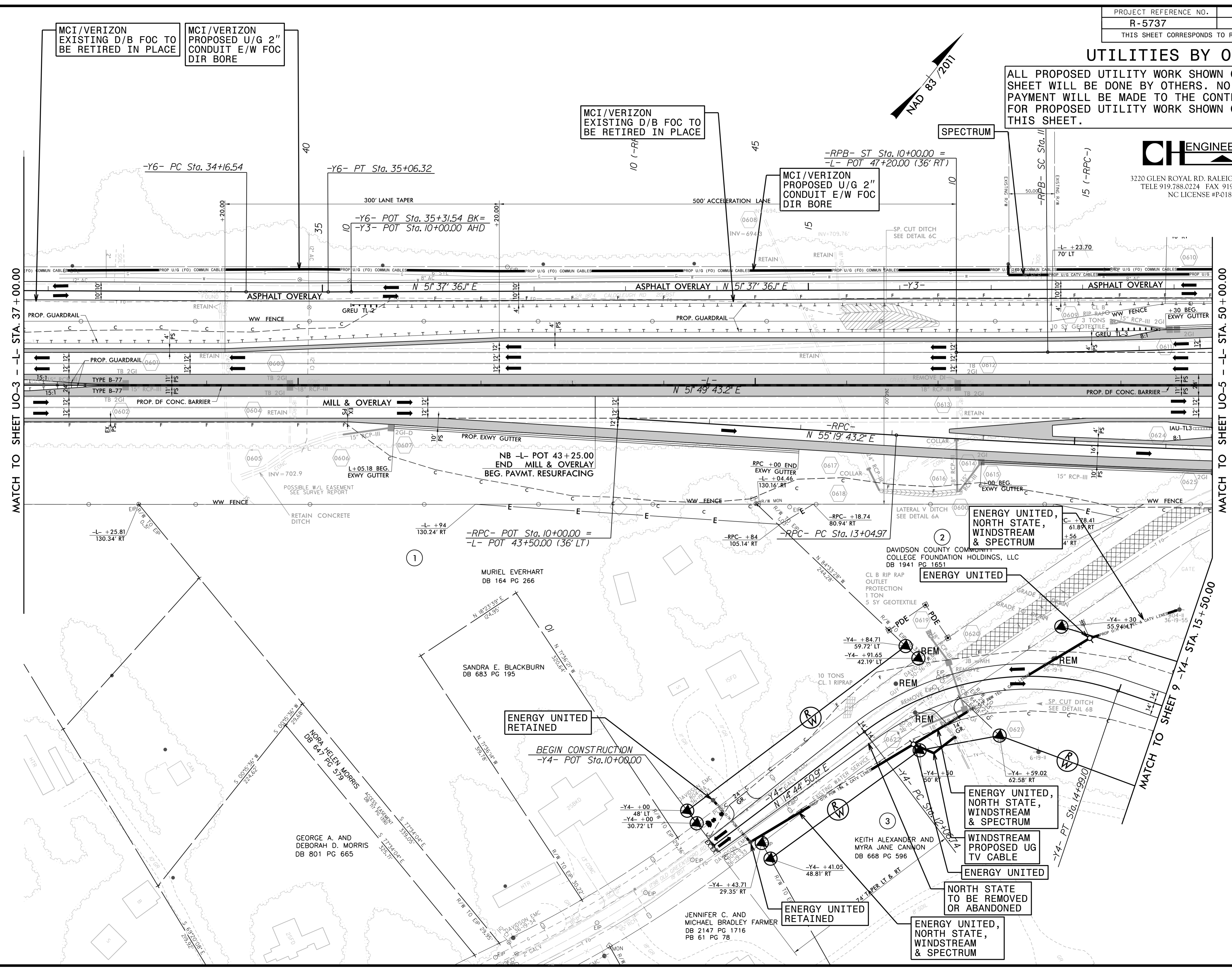
MCI/VERIZON EXISTING D/B FOC TO BE RETIRED IN PLACE

MCI/VERIZON PROPOSED U/G 2" CONDUIT E/W FOC DIR BORE

SPECTRUM

MATCH TO SHEET UO-3 -- L- STA. 37+00.00

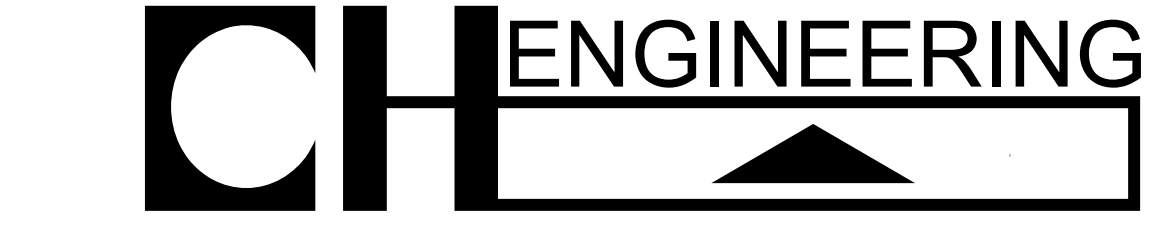
MATCH TO SHEET UO-5 -- L- STA. 50+00.00



8/6/2021  
 P:\Projects\RDY\RDY-06\Engineering\UBD\Proje\RDY-06\_U004\_psh.dgn

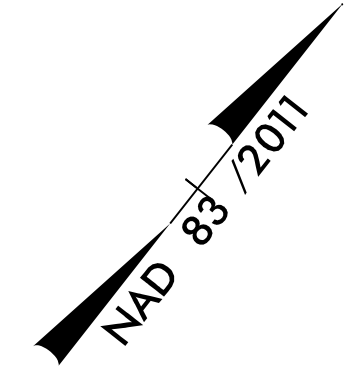
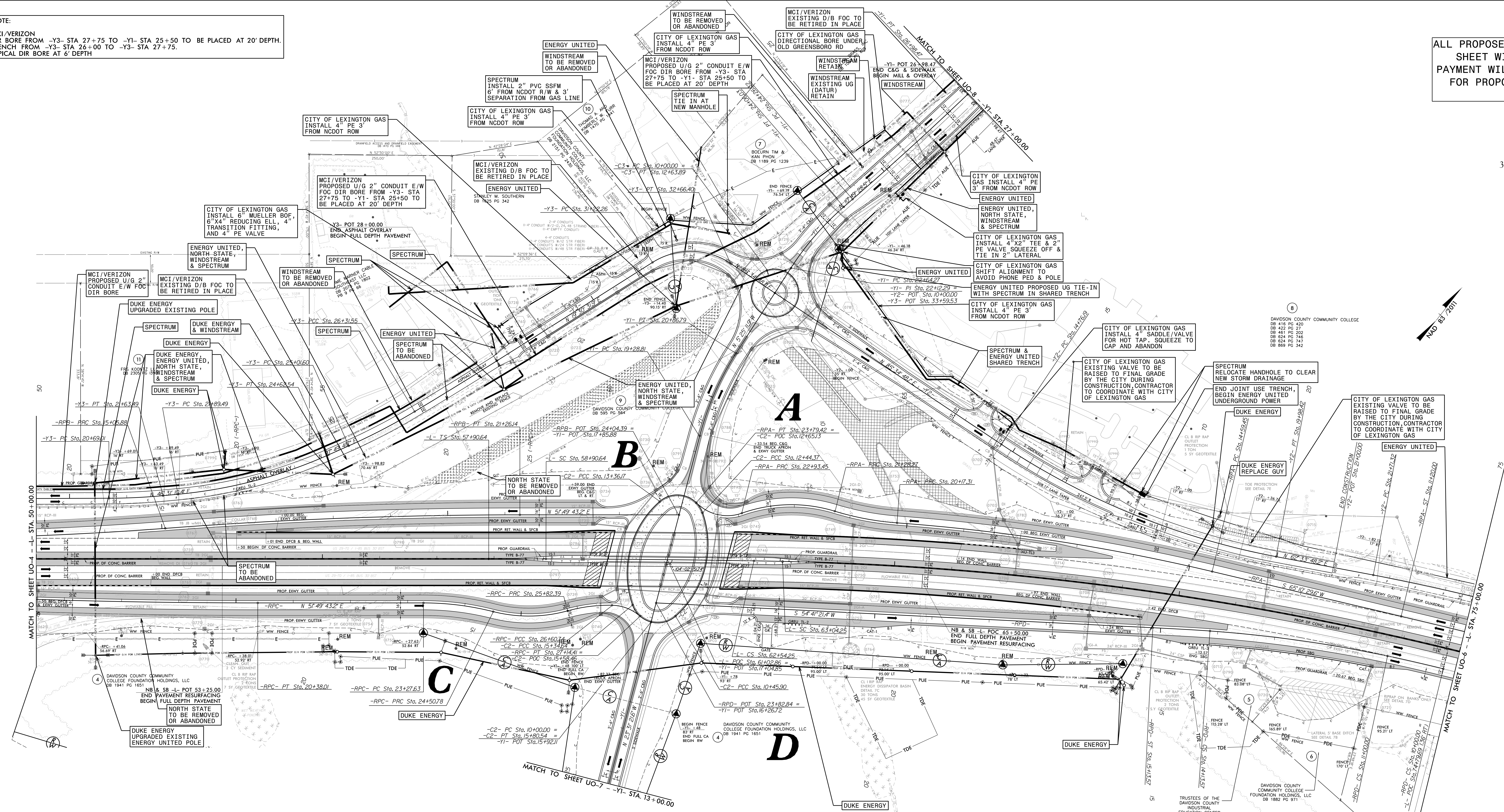
UTILITIES BY OTHERS

ALL PROPOSED UTILITY WORK SHOWN ON THIS SHEET WILL BE DONE BY OTHERS. NO PAYMENT WILL BE MADE TO THE CONTRACTOR FOR PROPOSED UTILITY WORK SHOWN ON THIS SHEET.

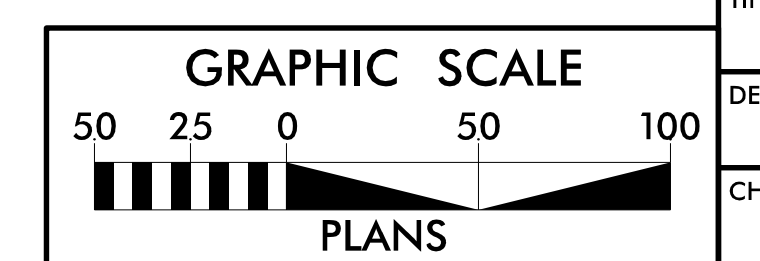


3220 GLEN ROYAL RD. RALEIGH, NC 27617  
TELE 919.788.0224 FAX 919.788.0232  
NC LICENSE #P0189

NOTE:  
MCI/VERIZON DIR BORE FROM -Y3- STA 27+75 TO -Y1- STA 25+50 TO BE PLACED AT 20' DEPTH. TRENCH FROM -Y3- STA 26+00 TO -Y3- STA 27+75. TYPICAL DIR BORE AT 6' DEPTH



SEE SHEET UO 9 FOR DETOUR 1  
SEE SHEET UO 10-13 FOR DETOUR 2



LOCATION:	
TIP NO.:	COUNTY:
DESIGNED BY:	CHECKED BY:
DATE:	

8/2/2020 C:\Users\jg\OneDrive\Documents\Projects\110000\110000.dwg

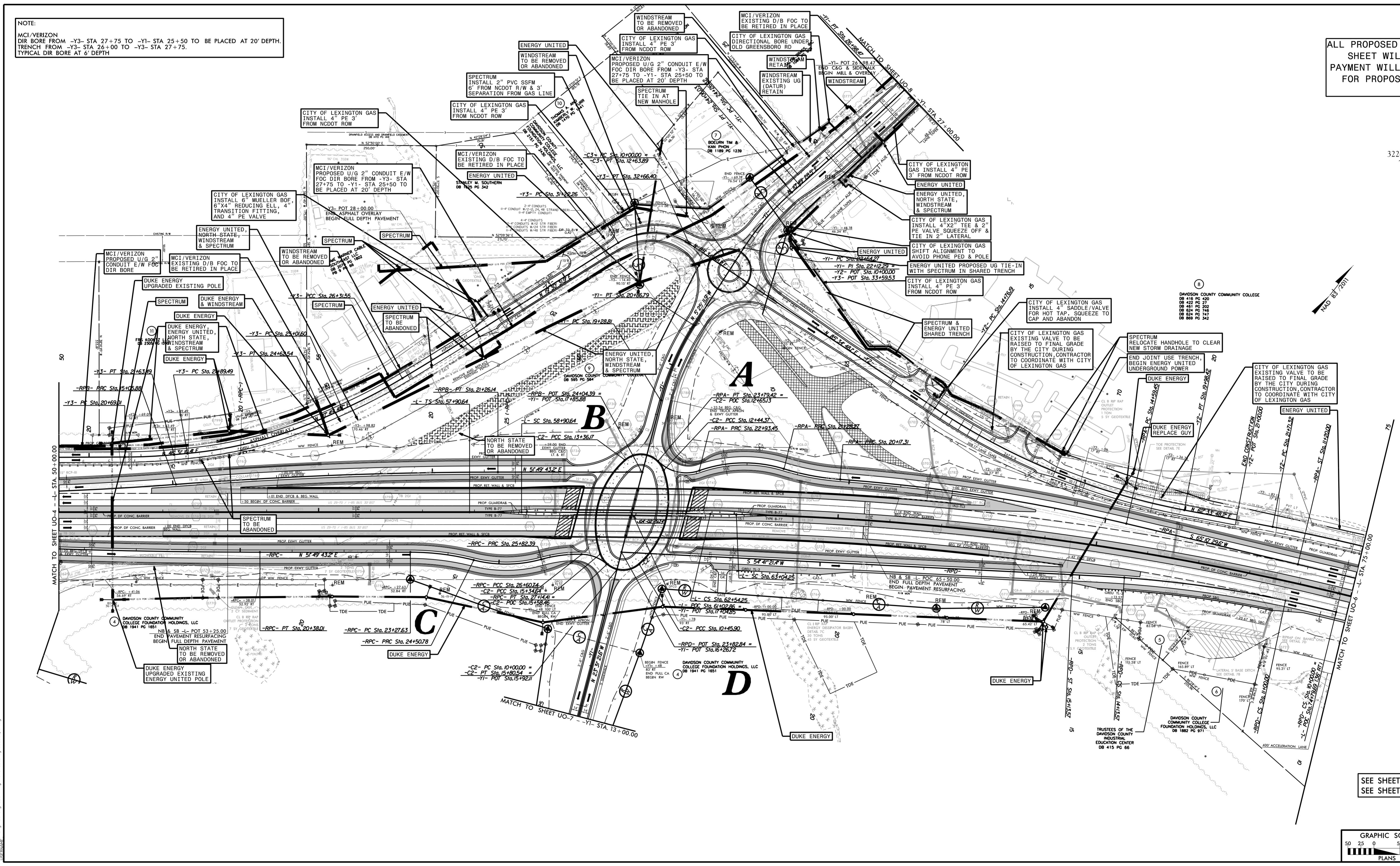
UTILITIES BY OTHERS

ALL PROPOSED UTILITY WORK SHOWN ON THIS SHEET WILL BE DONE BY OTHERS. NO PAYMENT WILL BE MADE TO THE CONTRACTOR FOR PROPOSED UTILITY WORK SHOWN ON THIS SHEET.



3220 GLEN ROYAL RD. RALEIGH, NC 27617  
 TELE 919.788.0224 FAX 919.788.0232  
 NC LICENSE #P-0189

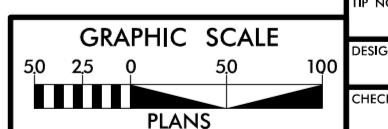
NOTE:  
 MCI/VERIZON DIR BORE FROM -Y3- STA 27+75 TO -Y1- STA 25+50 TO BE PLACED AT 20' DEPTH. TRENCH FROM -Y3- STA 26+00 TO -Y3- STA 27+75. TYPICAL DIR BORE AT 6' DEPTH.



DAWSON COUNTY COMMUNITY COLLEGE

08 416 PC 300
08 422 PC 237
08 434 PC 246
08 444 PC 246
08 469 PC 342

SEE SHEET UO 9 FOR DETOUR 1  
 SEE SHEET UO 10-13 FOR DETOUR 2

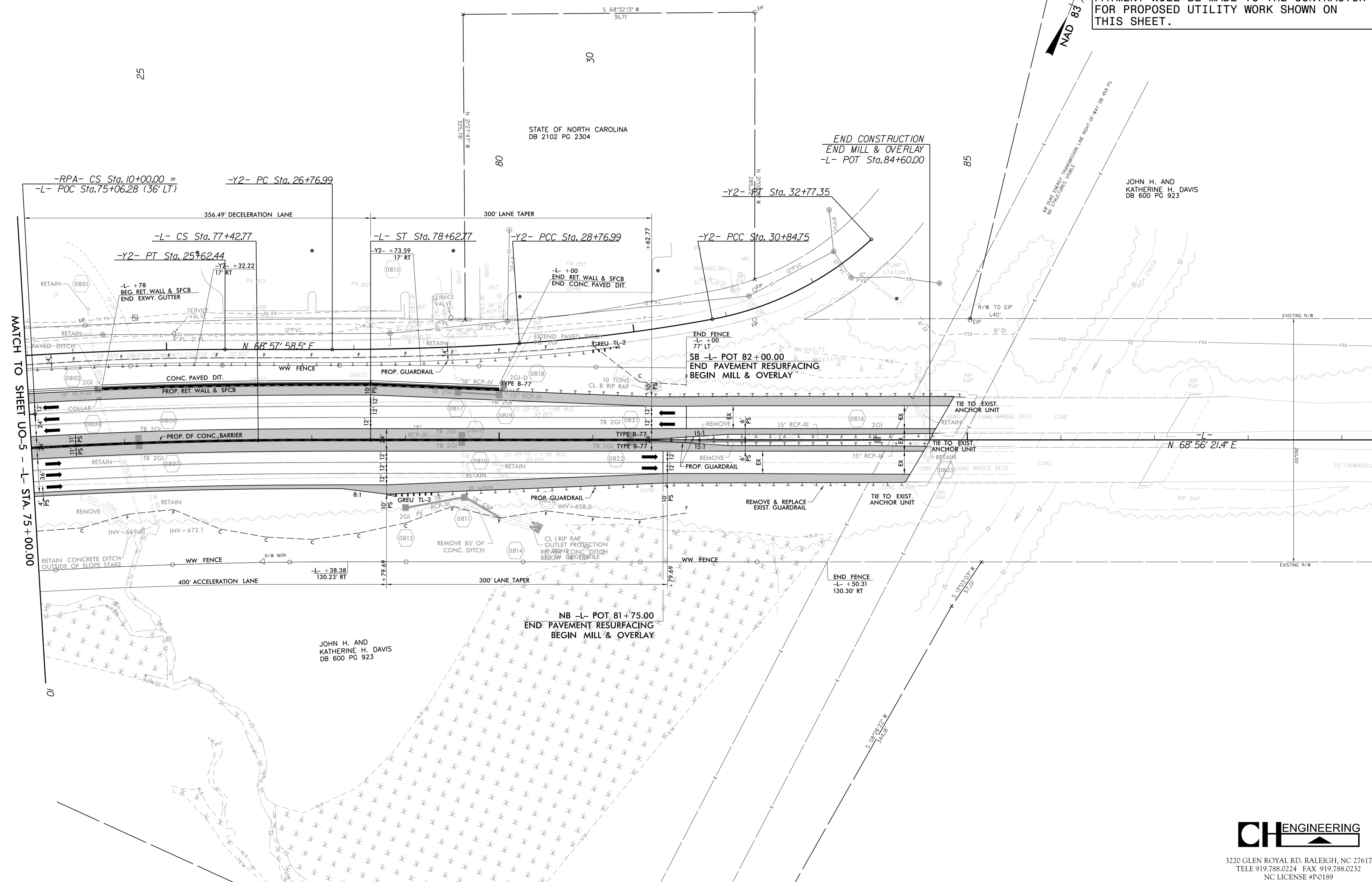


DATE:	
CHECKED BY:	
DESIGNED BY:	
PROJECT NO.:	
COUNTY:	
LOCATION:	



### UTILITIES BY OTHERS

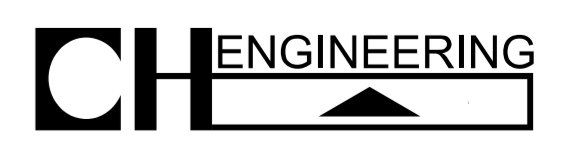
ALL PROPOSED UTILITY WORK SHOWN ON THIS SHEET WILL BE DONE BY OTHERS. NO PAYMENT WILL BE MADE TO THE CONTRACTOR FOR PROPOSED UTILITY WORK SHOWN ON THIS SHEET.



MATCH TO SHEET UO-5 - L- STA. 75+00.00

NAD 83 / 2011

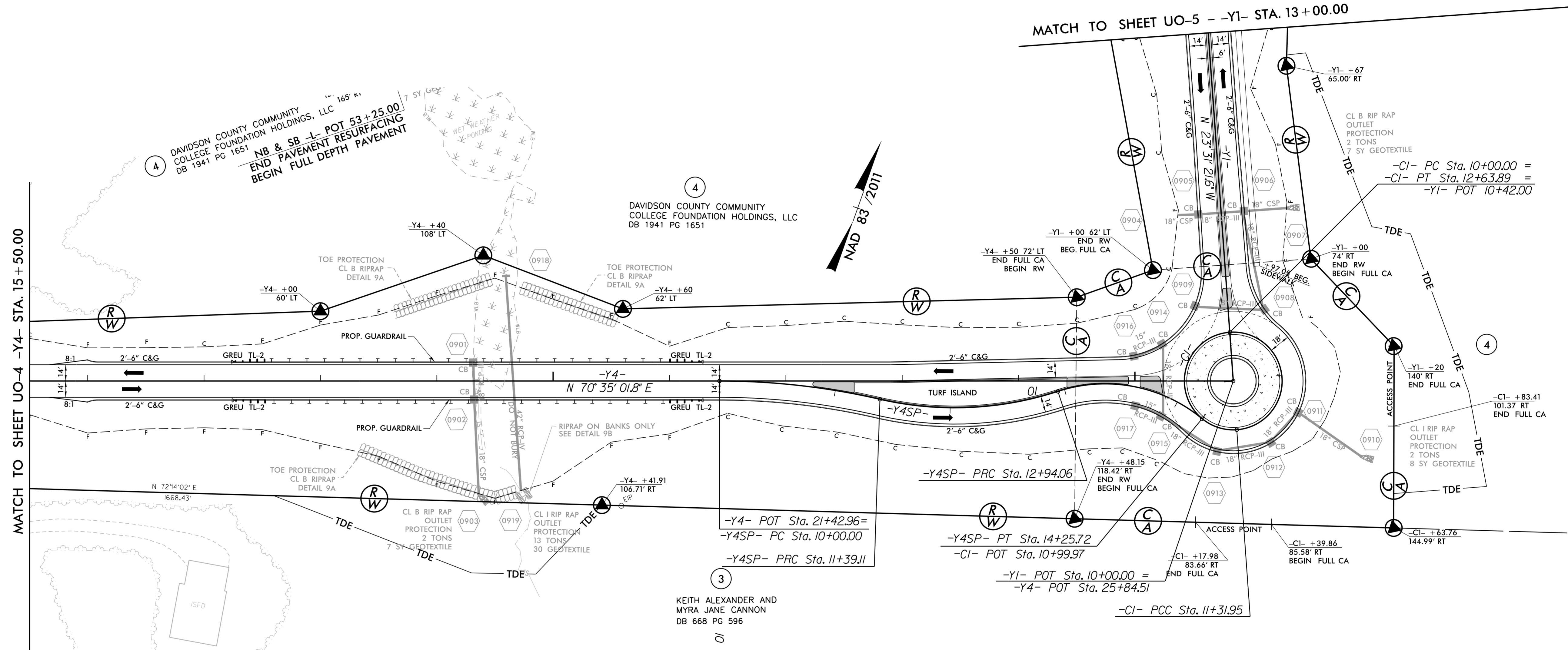
8/6/2021  
 C:\Users\psh\dgs\Engineering\UBD\Proj\RDY-08\U0-6.psh.dgn



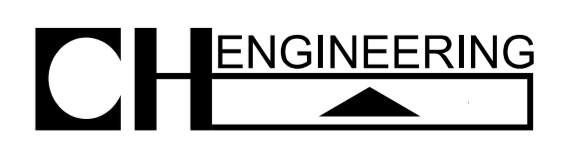
3220 GLEN ROYAL RD. RALEIGH, NC 27617  
 TELE 919.788.0224 FAX 919.788.0232  
 NC LICENSE #P-0189

### UTILITIES BY OTHERS

ALL PROPOSED UTILITY WORK SHOWN ON THIS SHEET WILL BE DONE BY OTHERS. NO PAYMENT WILL BE MADE TO THE CONTRACTOR FOR PROPOSED UTILITY WORK SHOWN ON THIS SHEET.



8/6/2021 P:\SHEETS\Engineering\UBD\Proj\R5737\ut\_rdy\_09\U007.psh.dgn

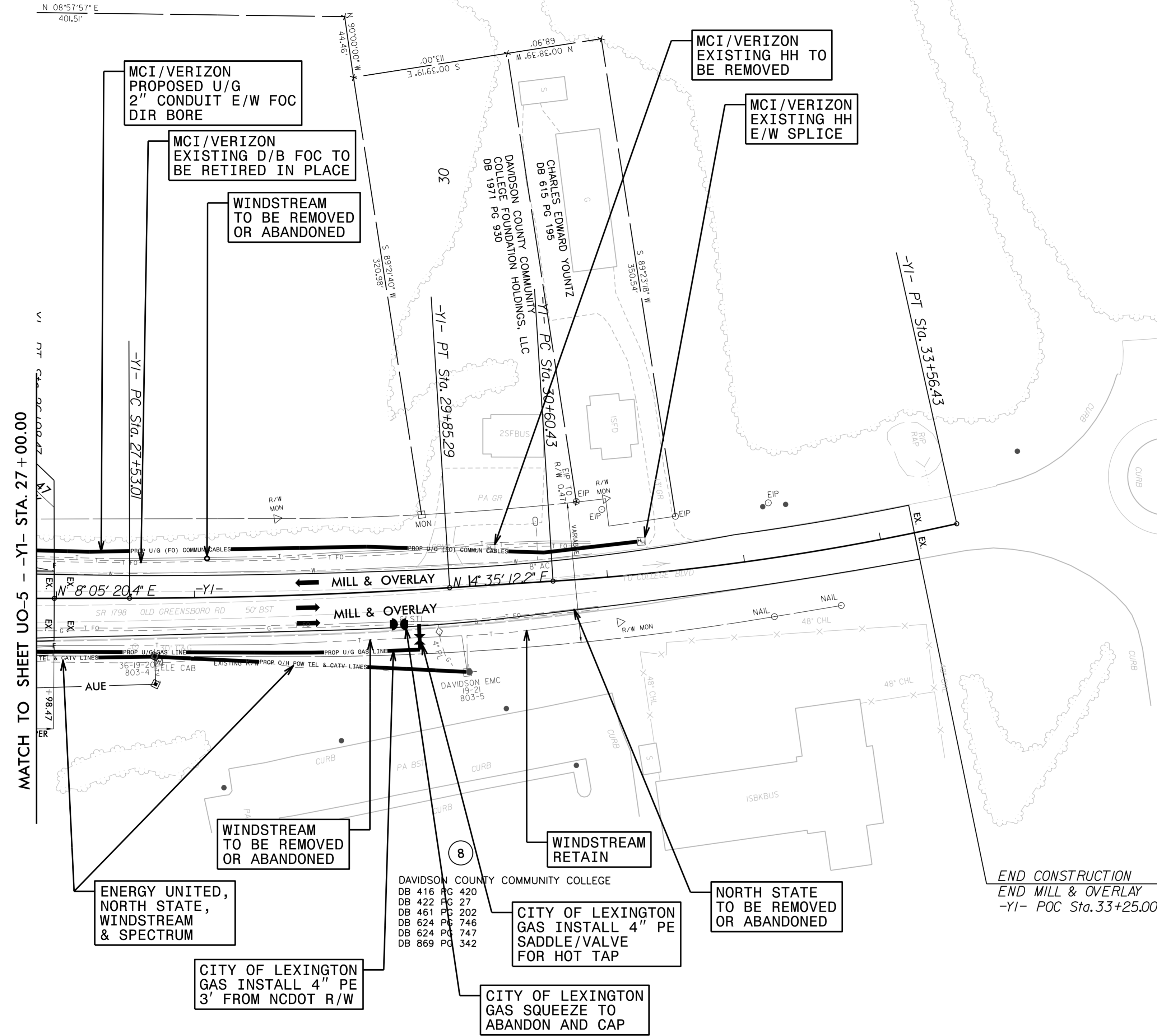


3220 GLEN ROYAL RD. RALEIGH, NC 27617  
 TELE 919.788.0224 FAX 919.788.0232  
 NC LICENSE #P0189

### UTILITIES BY OTHERS

ALL PROPOSED UTILITY WORK SHOWN ON THIS SHEET WILL BE DONE BY OTHERS. NO PAYMENT WILL BE MADE TO THE CONTRACTOR FOR PROPOSED UTILITY WORK SHOWN ON THIS SHEET.

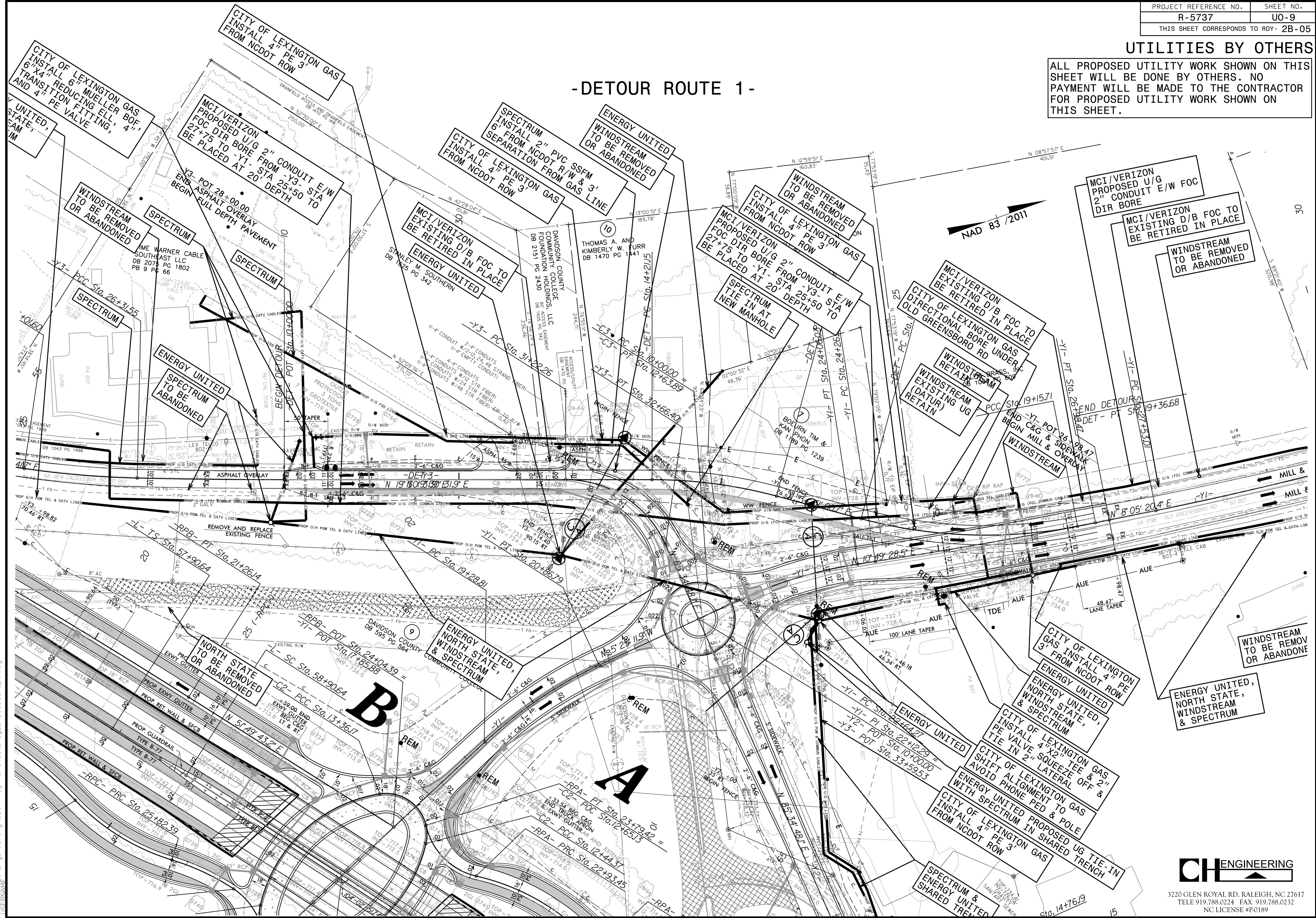
NAD 83 /2011



### UTILITIES BY OTHERS

ALL PROPOSED UTILITY WORK SHOWN ON THIS SHEET WILL BE DONE BY OTHERS. NO PAYMENT WILL BE MADE TO THE CONTRACTOR FOR PROPOSED UTILITY WORK SHOWN ON THIS SHEET.

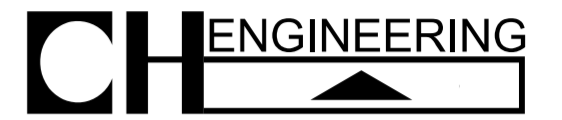
### -DETOUR ROUTE 1-



8/6/2021  
 P:\Projects\RDY-2B-05\Engineering\UBO\Prj\N5737-ut-rdy2b-05\_U009\_psh.dgn

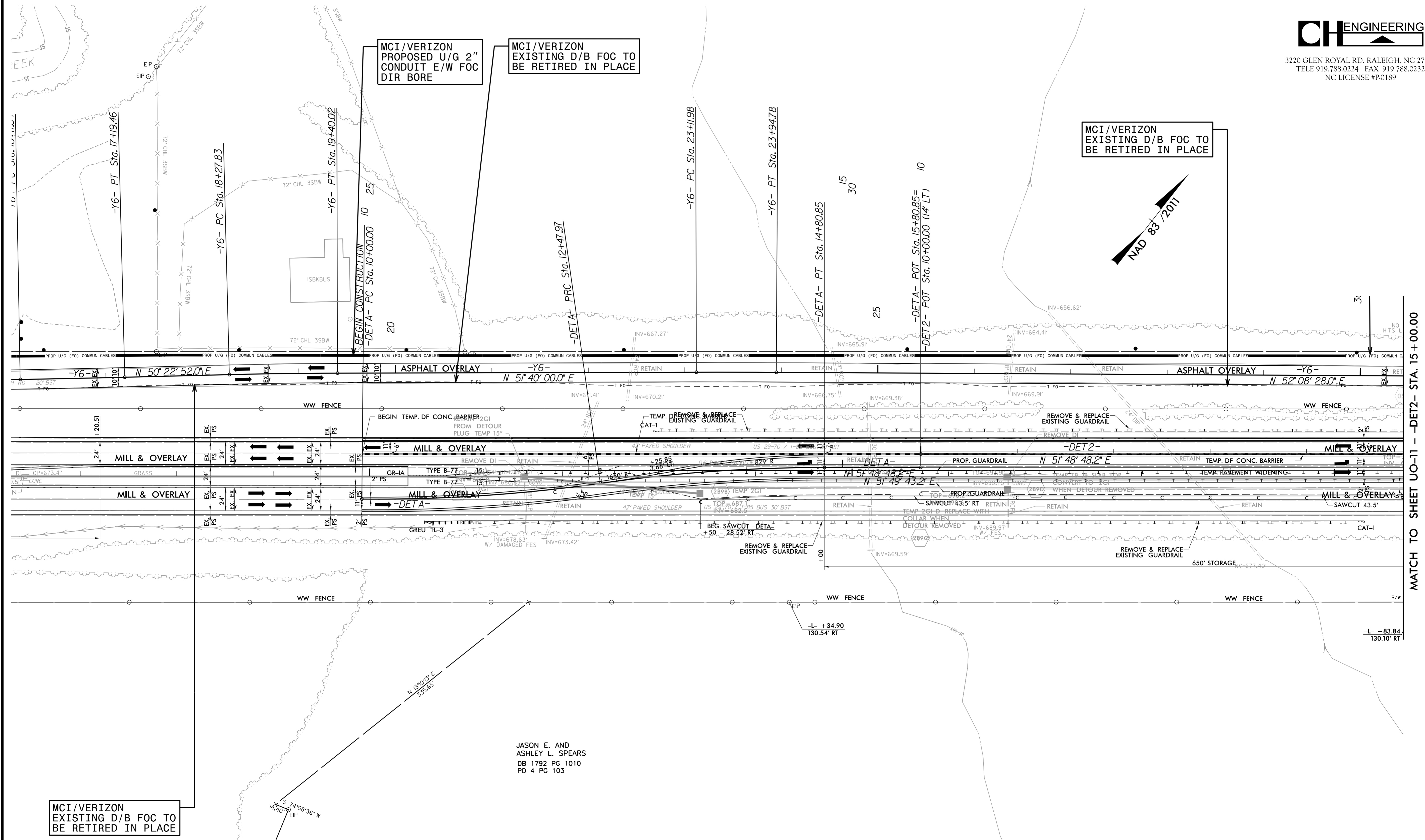
### UTILITIES BY OTHERS

ALL PROPOSED UTILITY WORK SHOWN ON THIS SHEET WILL BE DONE BY OTHERS. NO PAYMENT WILL BE MADE TO THE CONTRACTOR FOR PROPOSED UTILITY WORK SHOWN ON THIS SHEET.



3220 GLEN ROYAL RD. RALEIGH, NC 27617  
 TELE 919.788.0224 FAX 919.788.0232  
 NC LICENSE #P-0189

## -DETOUR ROUTE 2-



MCI/VERIZON  
 EXISTING D/B FOC TO  
 BE RETIRED IN PLACE

MCI/VERIZON  
 PROPOSED U/G 2\"/>

MCI/VERIZON  
 EXISTING D/B FOC TO  
 BE RETIRED IN PLACE

MCI/VERIZON  
 EXISTING D/B FOC TO  
 BE RETIRED IN PLACE



JASON E. AND  
 ASHLEY L. SPEARS  
 DB 1792 PG 1010  
 PD 4 PG 103

MATCH TO SHEET UO-11 - DET2- STA. 15 + 00.00

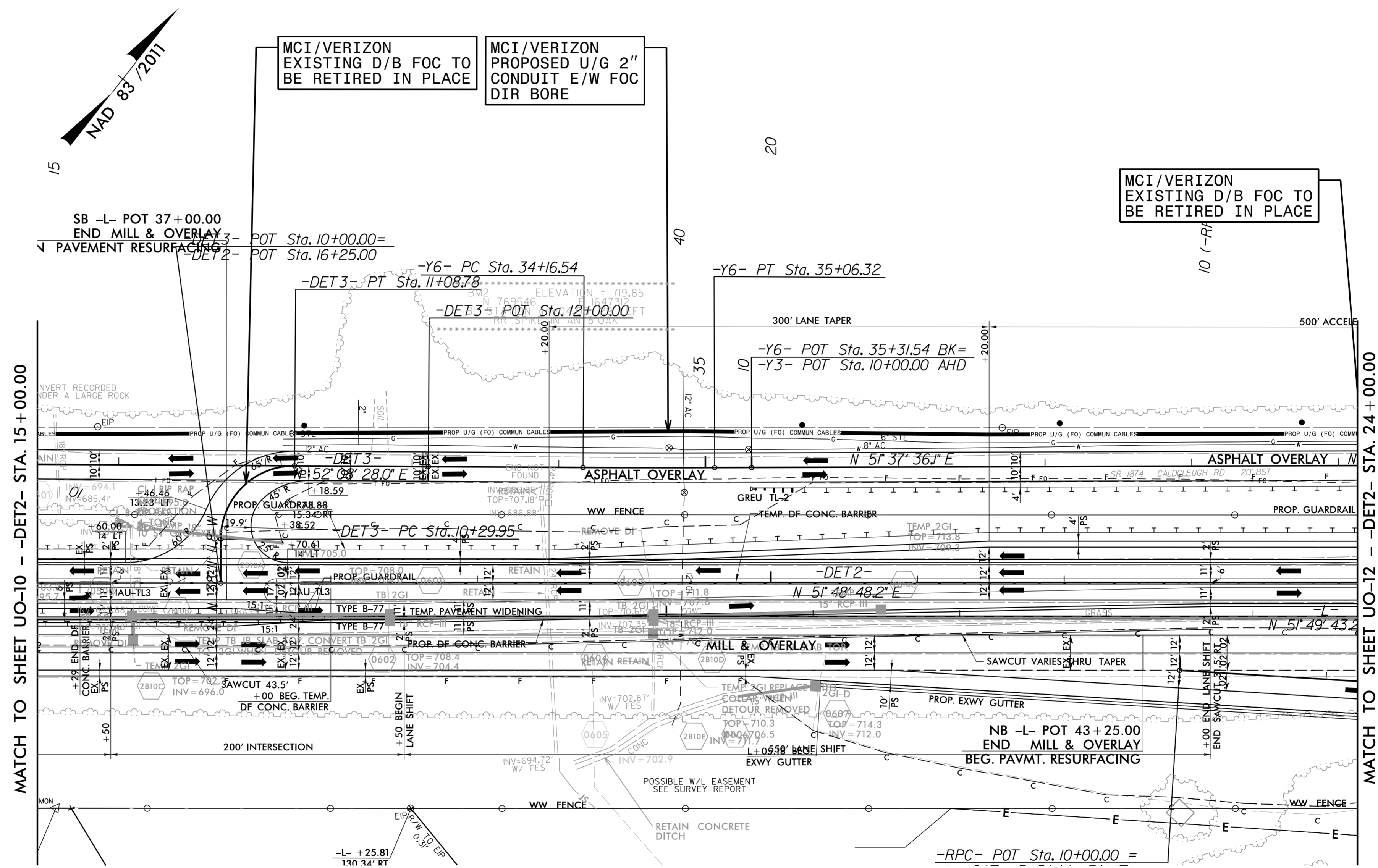
### UTILITIES BY OTHERS

ALL PROPOSED UTILITY WORK SHOWN ON THIS SHEET WILL BE DONE BY OTHERS. NO PAYMENT WILL BE MADE TO THE CONTRACTOR FOR PROPOSED UTILITY WORK SHOWN ON THIS SHEET.



3220 GLEN ROYAL RD. RALEIGH, NC 27617  
 TELE 919.788.0224 FAX 919.788.0232  
 NC LICENSE #P-0189

## -DETOUR ROUTE 2-



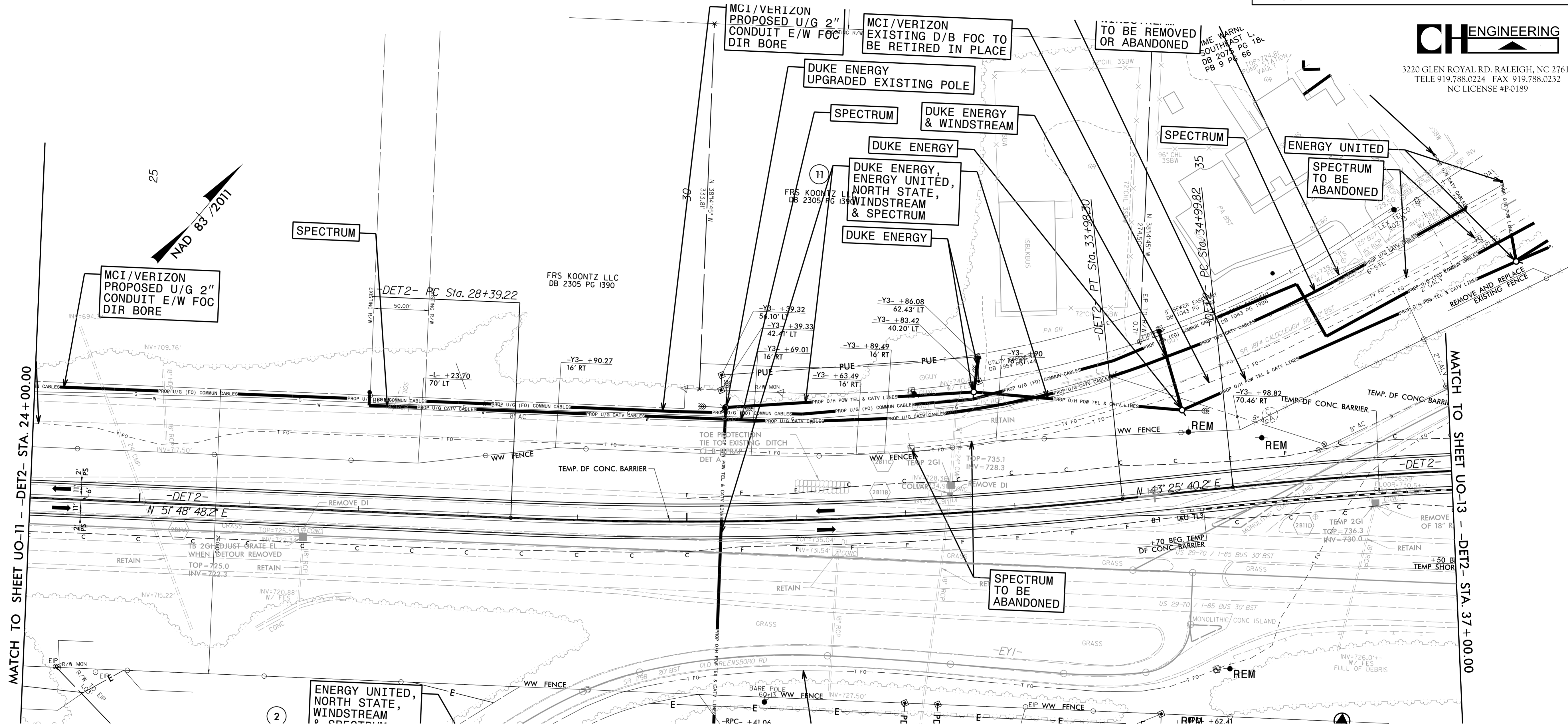
# UTILITIES BY OTHERS

ALL PROPOSED UTILITY WORK SHOWN ON THIS SHEET WILL BE DONE BY OTHERS. NO PAYMENT WILL BE MADE TO THE CONTRACTOR FOR PROPOSED UTILITY WORK SHOWN ON THIS SHEET.



3220 GLEN ROYAL RD. RALEIGH, NC 27617  
 TELE 919.788.0224 FAX 919.788.0232  
 NC LICENSE #P-0189

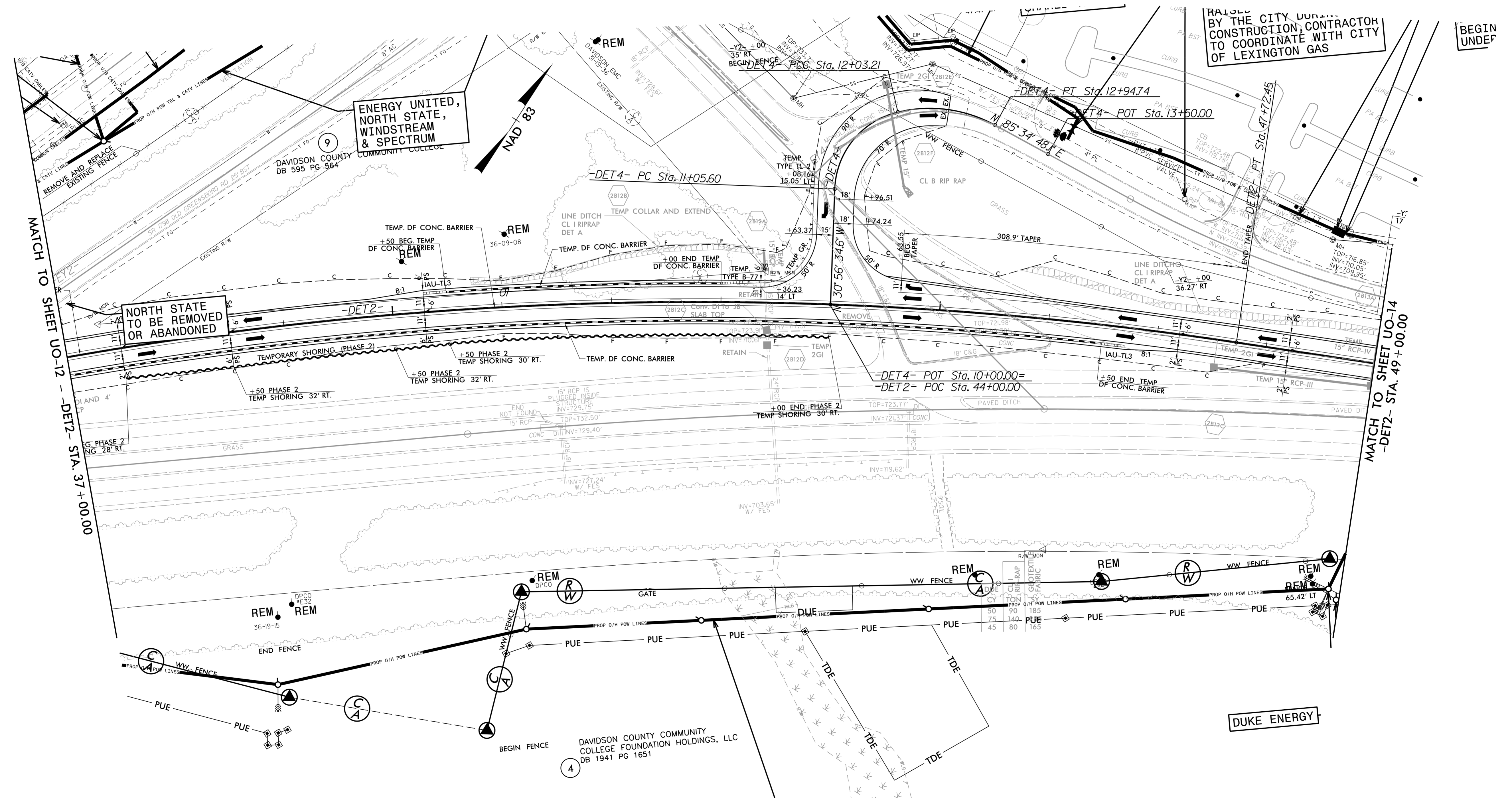
## -DETOUR ROUTE 2-



### UTILITIES BY OTHERS

ALL PROPOSED UTILITY WORK SHOWN ON THIS SHEET WILL BE DONE BY OTHERS. NO PAYMENT WILL BE MADE TO THE CONTRACTOR FOR PROPOSED UTILITY WORK SHOWN ON THIS SHEET.

## -DETOUR ROUTE 2-



NORTH STATE TO BE REMOVED OR ABANDONED

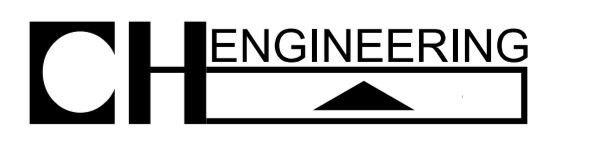
RAISED BY THE CITY DURING CONSTRUCTION, CONTRACTOR TO COORDINATE WITH CITY OF LEXINGTON GAS

BEGIN UNDEF

MATCH TO SHEET UO-12 - DET2- STA. 37 + 00.00

MATCH TO SHEET UO-14 - DET2- STA. 49 + 00.00

8/6/2021 P:\S\B\Projects\Engineering\UBD\Proj\N5737\ut\_rdy2B-09\_UO13.psh.dgn

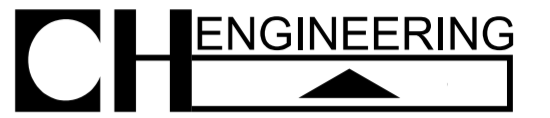


3220 GLEN ROYAL RD. RALEIGH, NC 27617  
 TELE 919.788.0224 FAX 919.788.0232  
 NC LICENSE #P-0189



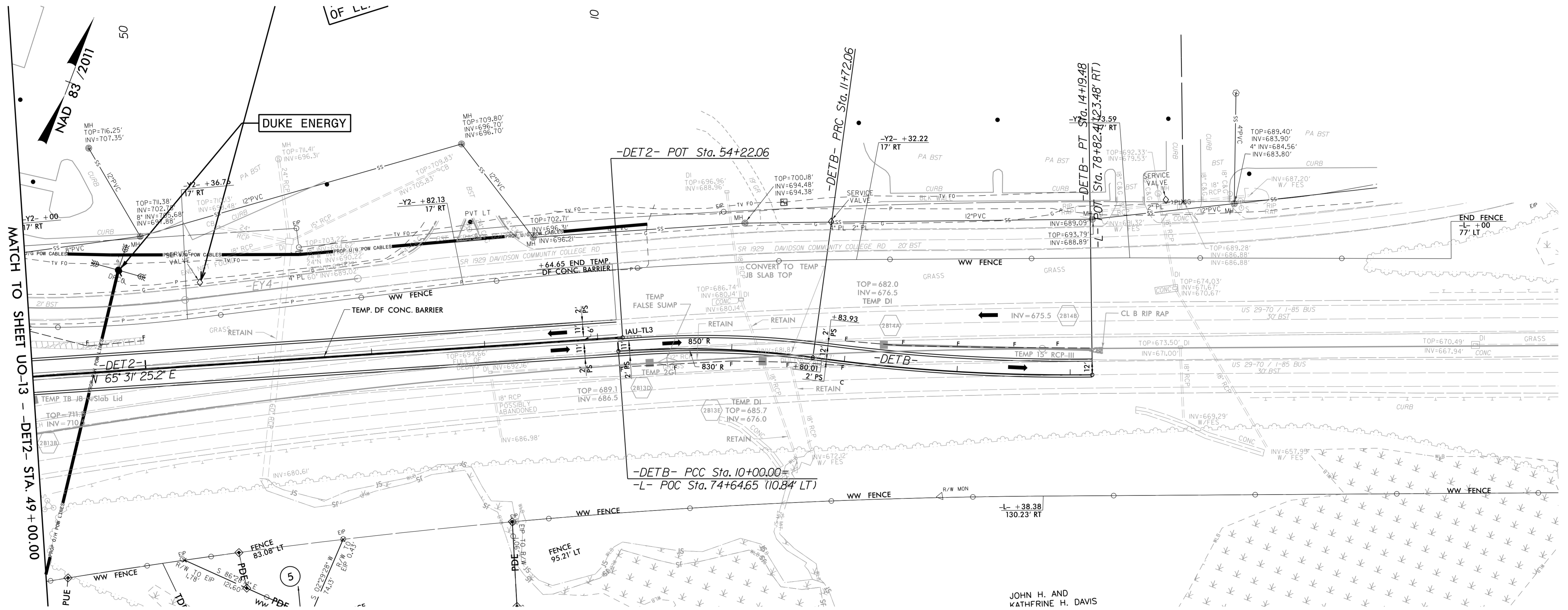
### UTILITIES BY OTHERS

ALL PROPOSED UTILITY WORK SHOWN ON THIS SHEET WILL BE DONE BY OTHERS. NO PAYMENT WILL BE MADE TO THE CONTRACTOR FOR PROPOSED UTILITY WORK SHOWN ON THIS SHEET.



3220 GLEN ROYAL RD. RALEIGH, NC 27617  
 TELE 919.788.0224 FAX 919.788.0232  
 NC LICENSE #P-0189

## -DETOUR ROUTE 2-



JOHN H. AND  
 KATHRINE H. DAVIS

8/6/2021 P:\S\B\1033\Engineering\UBD\Pro\N\5737\ut\_r\dj2B-10\_U014\_psh.dgn