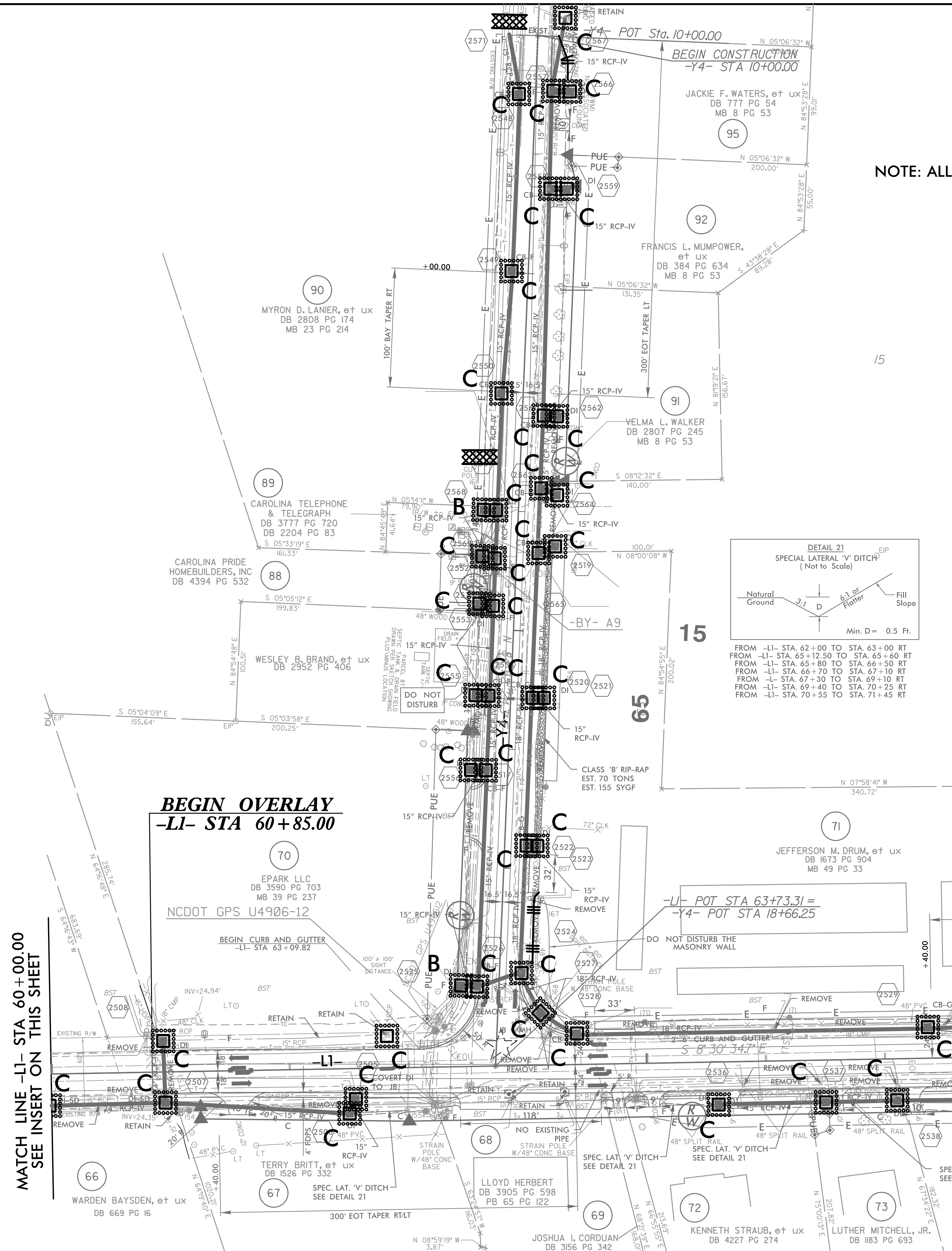


2017-09-14 RW Revision - Property Lines for Parcel 89 & 90 were Updated, Revised PUE on Parcel 70, Revised TCE on Parcels 90, 91 & 92, Revised ROW on Parcel 92, Removed TCE from Parcels 88, 89 & 90, Added PUE on Parcels 87, 88, 89, 90 & 92, DIMW
 2017-09-19 RW Revision - Property Lines for Parcel 89 & 90 were Updated, Revised PUE on Parcel 70, Revised TCE on Parcels 90, 91 & 92, Revised ROW on Parcel 92, Removed TCE from Parcels 88, 89 & 90, Added PUE on Parcels 87, 88, 89, 90 & 92, DIMW
 2018-04-25 RW Revision - Revised TCE on Parcel 71, Changed ROW to TCE on Parcel 70, 88, 90, 91 & 92, Removed TCE on Parcel 87, 89 & 90, Revised PUE on Parcel 87, 89, 90, Added PUE on Parcel 95, due to TCE around drainage structure 2566, Added TDE to Parcel 95, Revised PUE on Parcels 70, 87, 88, 89, 90, Removed PUE on Parcel 87, 89, 90, Added PUE on Parcel 91 and 92, CRG
 2018-12-12 RW Revision - Revised TCE to ROW on Parcel 70, 88, 91 & 92, Added PUE on Parcel 70, 88, 91 & 92, Revised TCE to ROW on Parcel 78 and 92, DIMW
 2021-04-14 RW Revision - Revised TCE to ROW on Parcel 78 and 92, DIMW

8.17/99

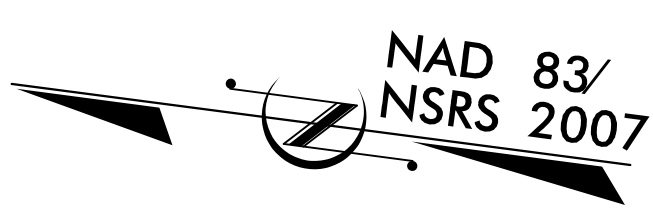
5/18/2022
 EC-25, Const-25.dgn



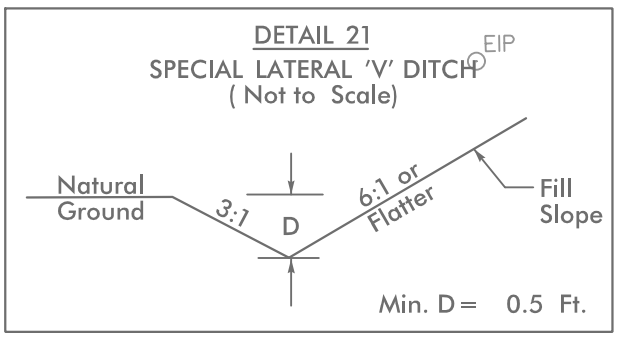
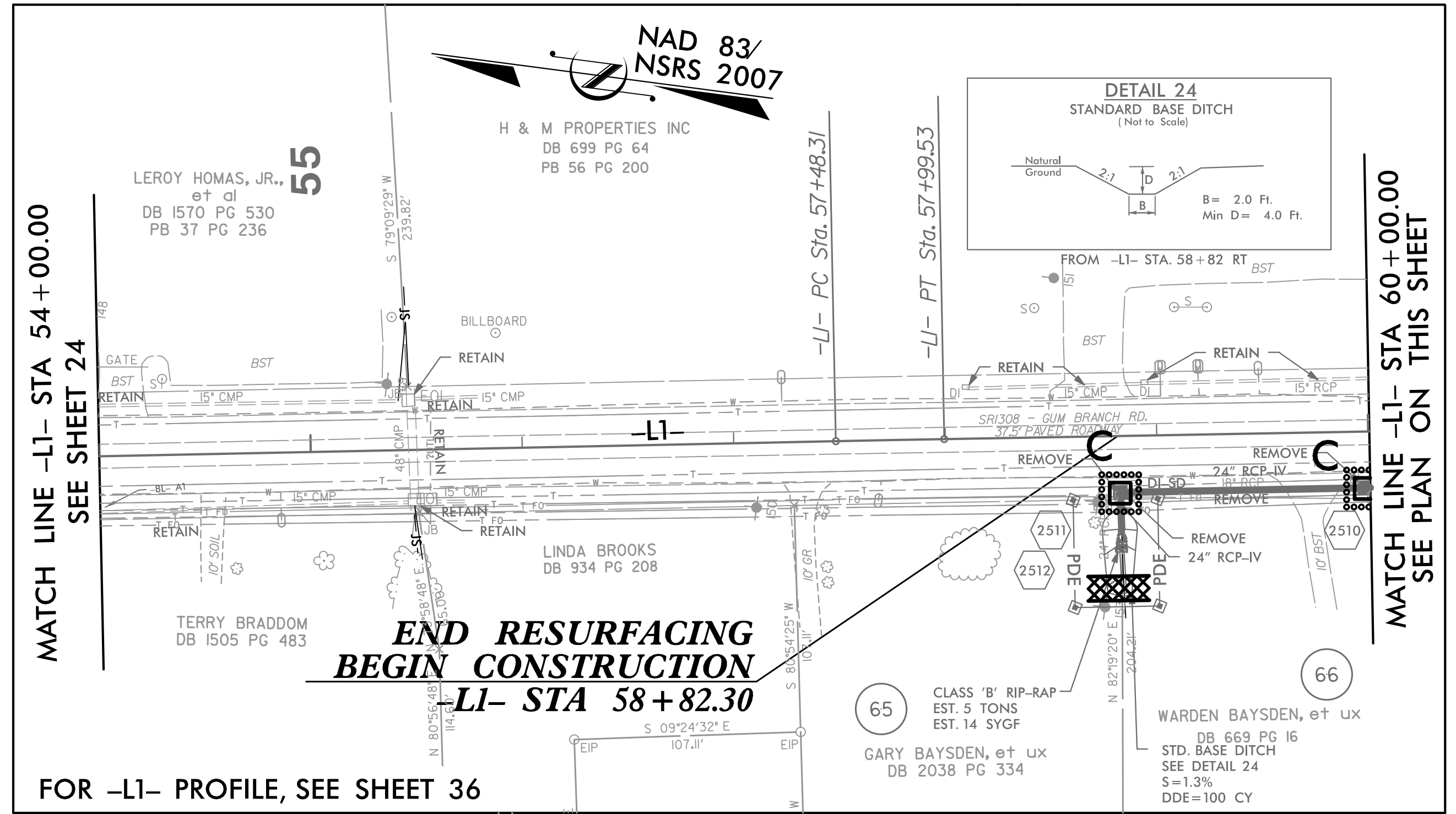
EXISTING TRAFFIC SIGNAL

HNTB HNTB NORTH CAROLINA, P.C.
 343 E. SIX FORKS ROAD, SUITE 200
 RALEIGH, NORTH CAROLINA 27609
 NC LICENSE NO: C-1554

PROJECT REFERENCE NO. U-4906	SHEET NO. EC-48/CONST.25
RW SHEET NO.	
ROADWAY DESIGN ENGINEER	HYDRAULICS ENGINEER



NOTE: ALL DRIVEWAY RADII ARE 10' UNLESS OTHERWISE NOTED ON PLANS



FROM -L1- STA. 62+00 TO STA. 63+00 RT
 FROM -L1- STA. 65+12.50 TO STA. 65+60 RT
 FROM -L1- STA. 66+70 TO STA. 67+10 RT
 FROM -L1- STA. 67+30 TO STA. 69+10 RT
 FROM -L1- STA. 69+40 TO STA. 70+25 RT
 FROM -L1- STA. 70+55 TO STA. 71+45 RT

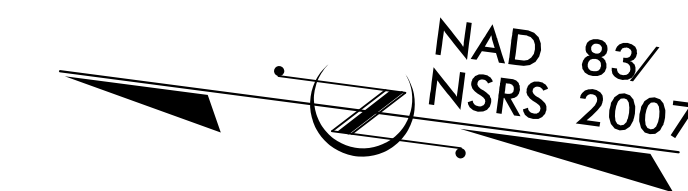
**END OVERLAY
 -L1- STA 71+40.00**

MATCH LINE -L1- STA 60+00.00
 SEE INSERT ON THIS SHEET

MATCH LINE -L1- STA 73+50.00
 SEE SHEET 26

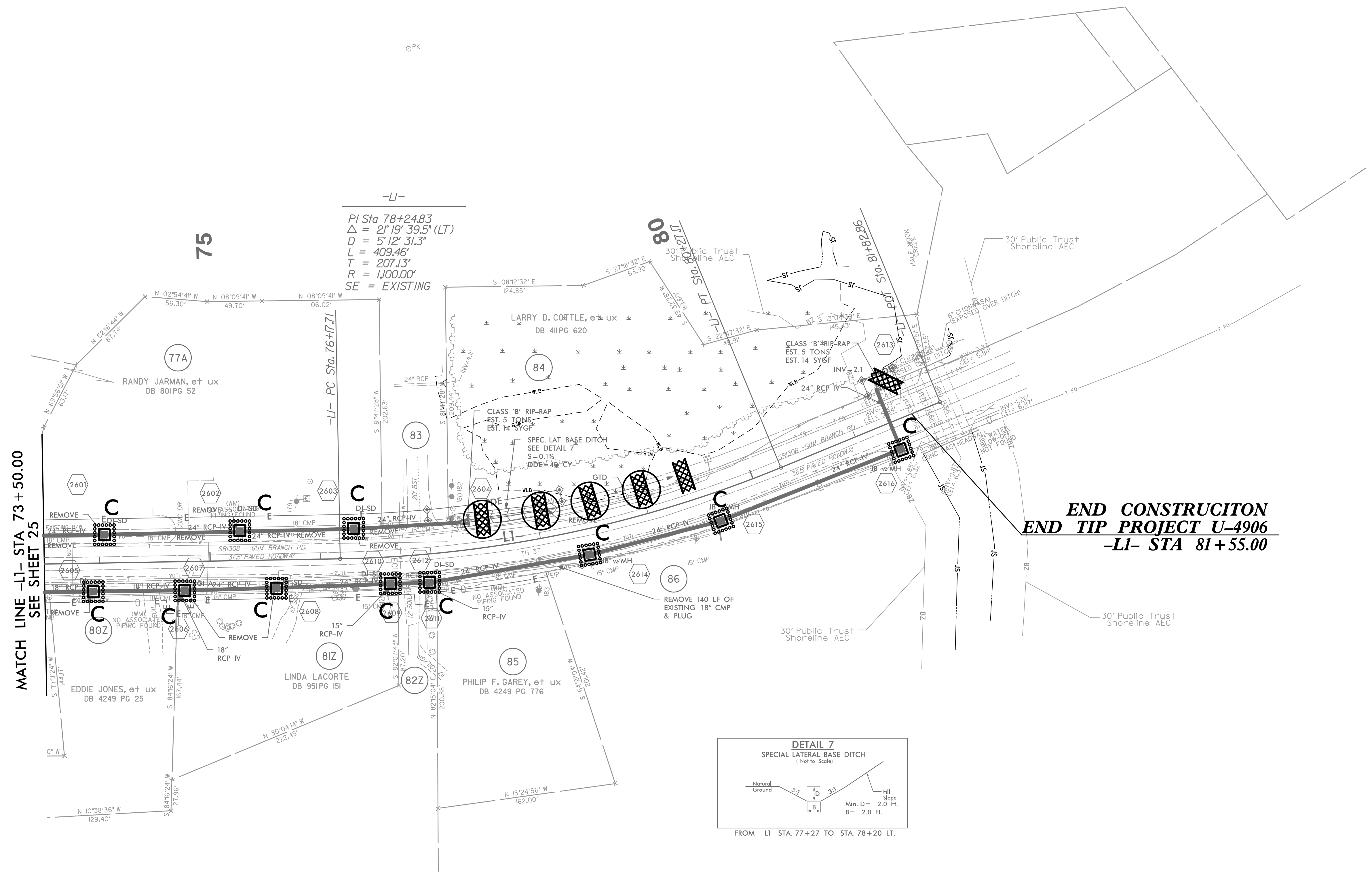
FOR -L1- PROFILE, SEE SHEET 37
 FOR -Y4- PROFILE, SEE SHEET 39

PROJECT REFERENCE NO.	SHEET NO.
U-4906	EC-49/CONST.26
RW SHEET NO.	
ROADWAY DESIGN ENGINEER	HYDRAULICS ENGINEER



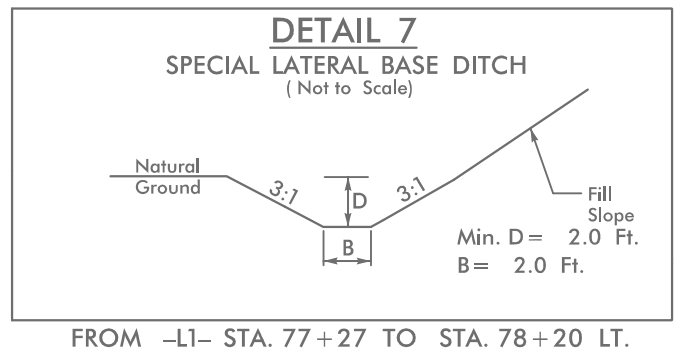
REVISIONS
 2017-09-14 ROW Revision - Revised PDE on Parcel 83, Added PDE ROW Markers to Parcels 83 & 84, DMW
 2018-09-28 ROW Revision - Removed TCE on Parcel 86, Revised TCE on Parcel 85, Added PDE on Parcel 84, CRG
 2021-04-14 ROW Revision - Revised TCE on Parcel 80, 81 and 82, DMW

5/18/2022
 5/18/2022 EC-26 - Const+26.dgn



-LI-
 PI Sta 78+24.83
 $\Delta = 21' 19'' 39.5''$ (LT)
 $D = 5' 12'' 31.3''$
 $L = 409.46'$
 $T = 207.13'$
 $R = 1,000.00'$
 SE = EXISTING

END CONSTRUCTION
END TIP PROJECT U-4906
-LI- STA 81+55.00



NOTE: ALL DRIVEWAY RADII ARE 10' UNLESS OTHERWISE NOTED ON PLANS