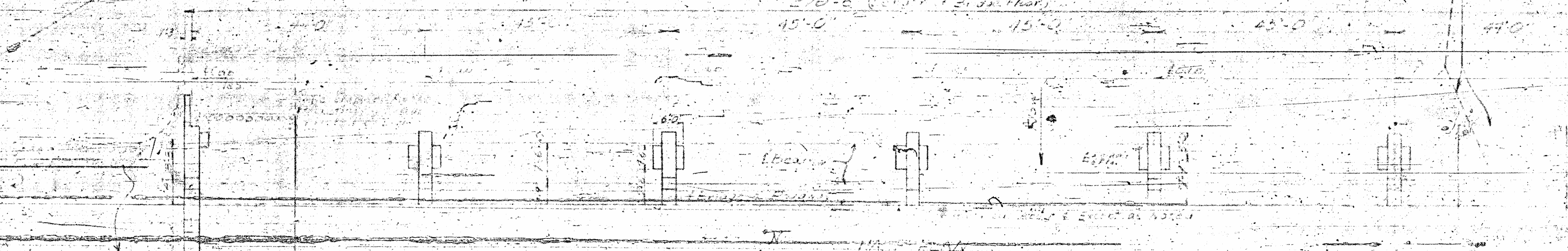


SECTION ALONG E OF BRIDGE

310'-0" (Total Bridge Length)
 15'-0" 15'-0" 15'-0" 15'-0" 45'-0"



MAINTENANCE PLAN

MAINTENANCE AND REPAIR OF EXISTING STRUCTURE

After the completion of the new bridge, the existing bridge shall be maintained in its present condition. The bridge shall be inspected annually and any necessary repairs shall be made. The bridge shall be kept clear of any obstructions and shall be kept in good repair at all times.

Scale: 1" = 10'-0"

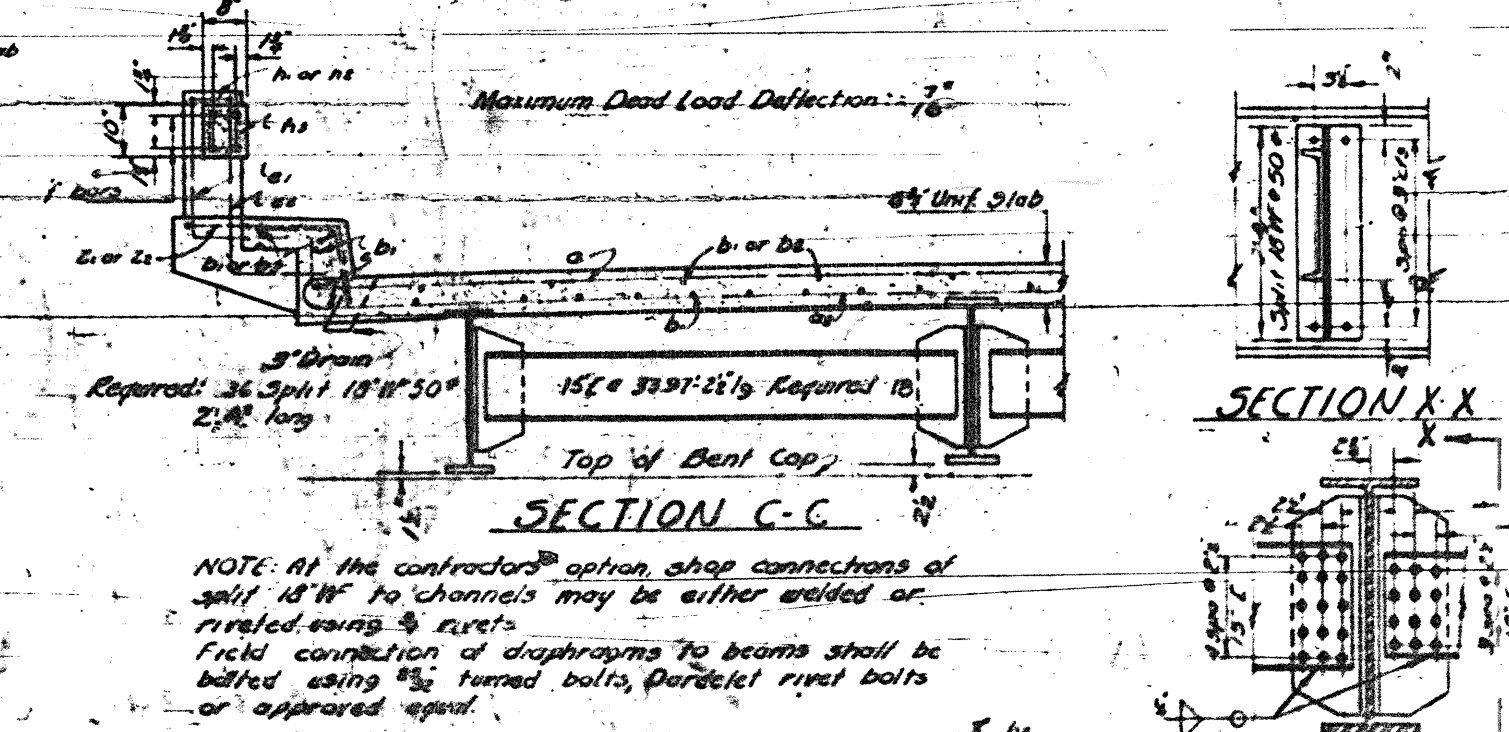
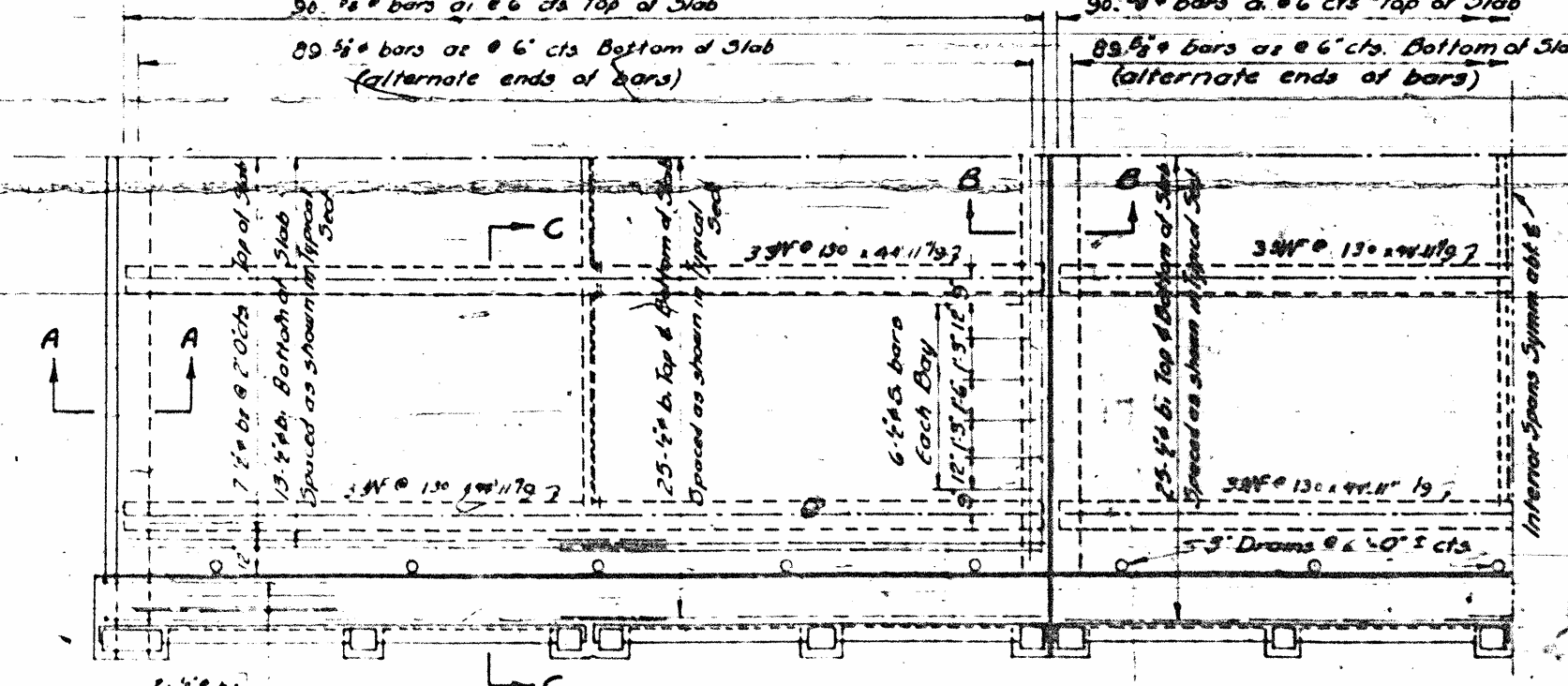
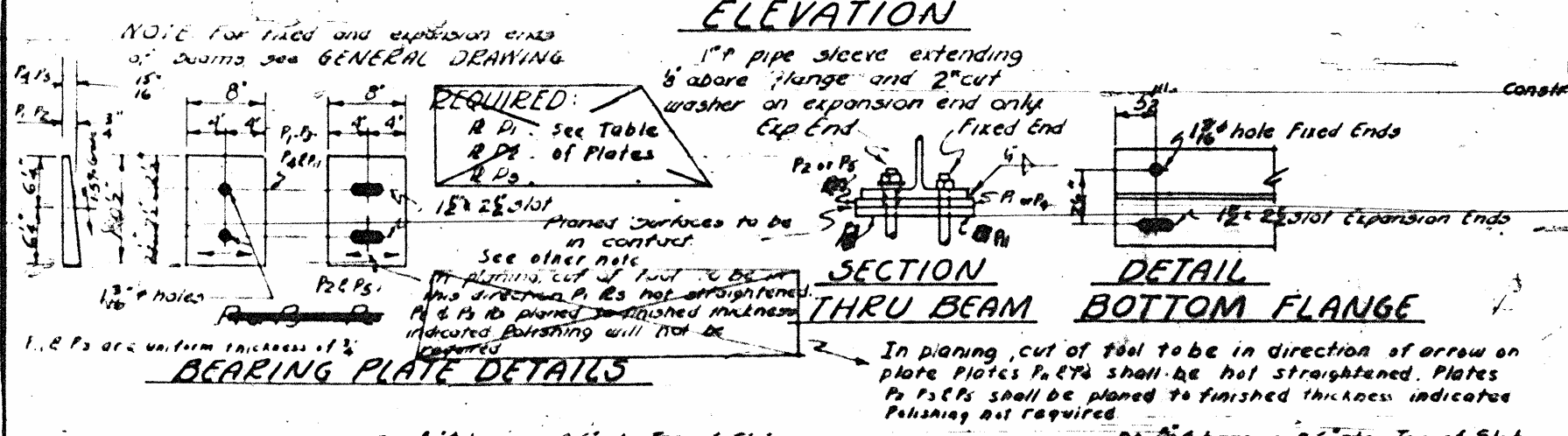
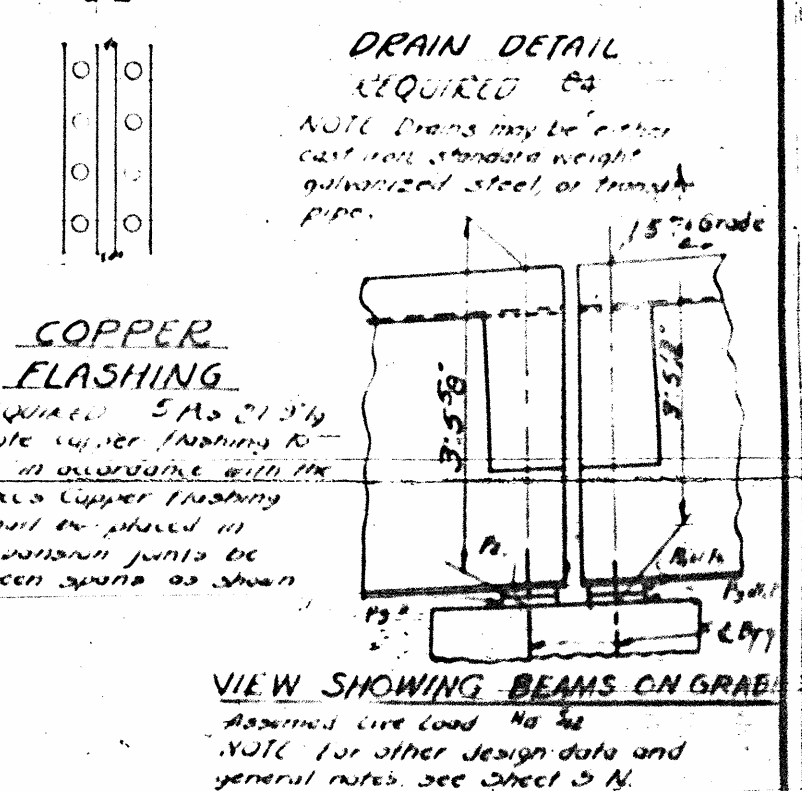
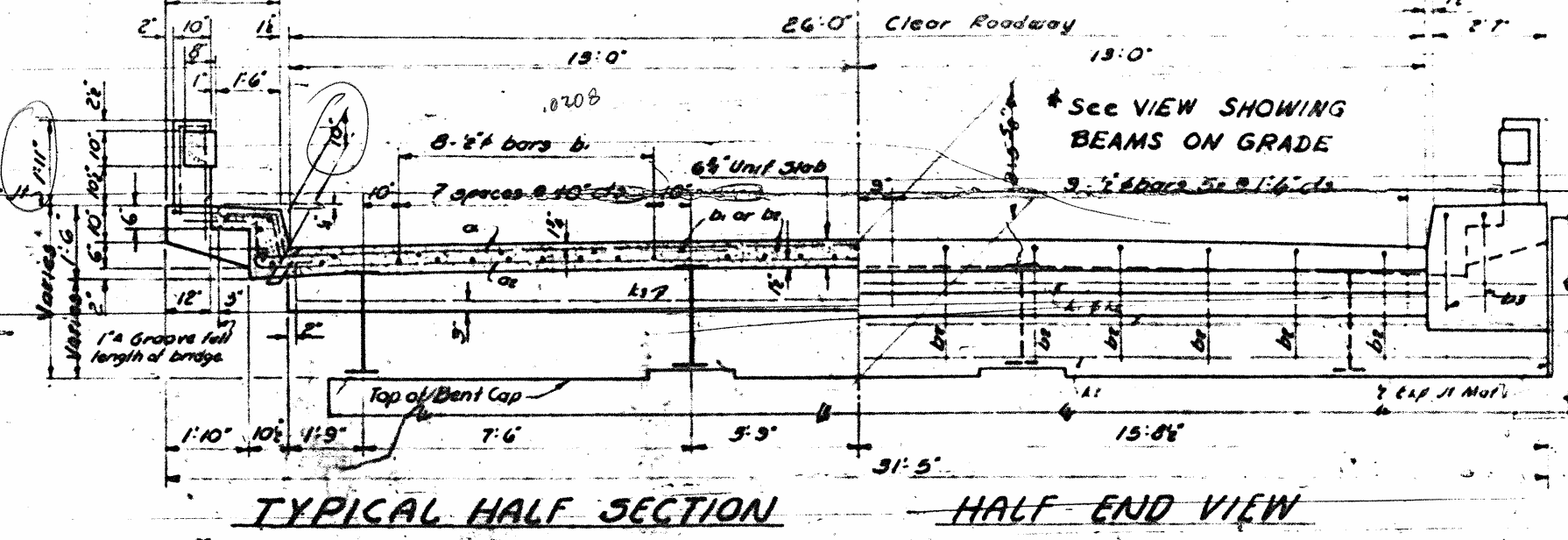
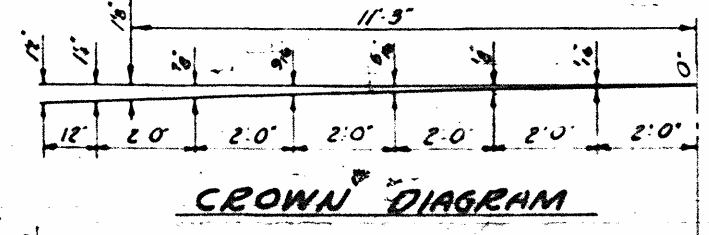
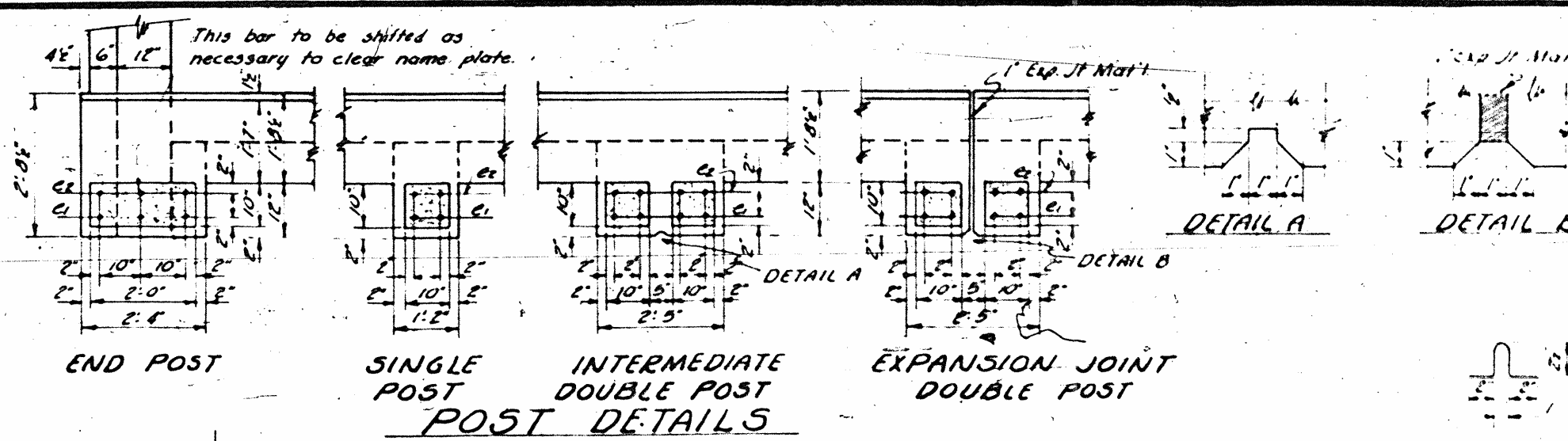
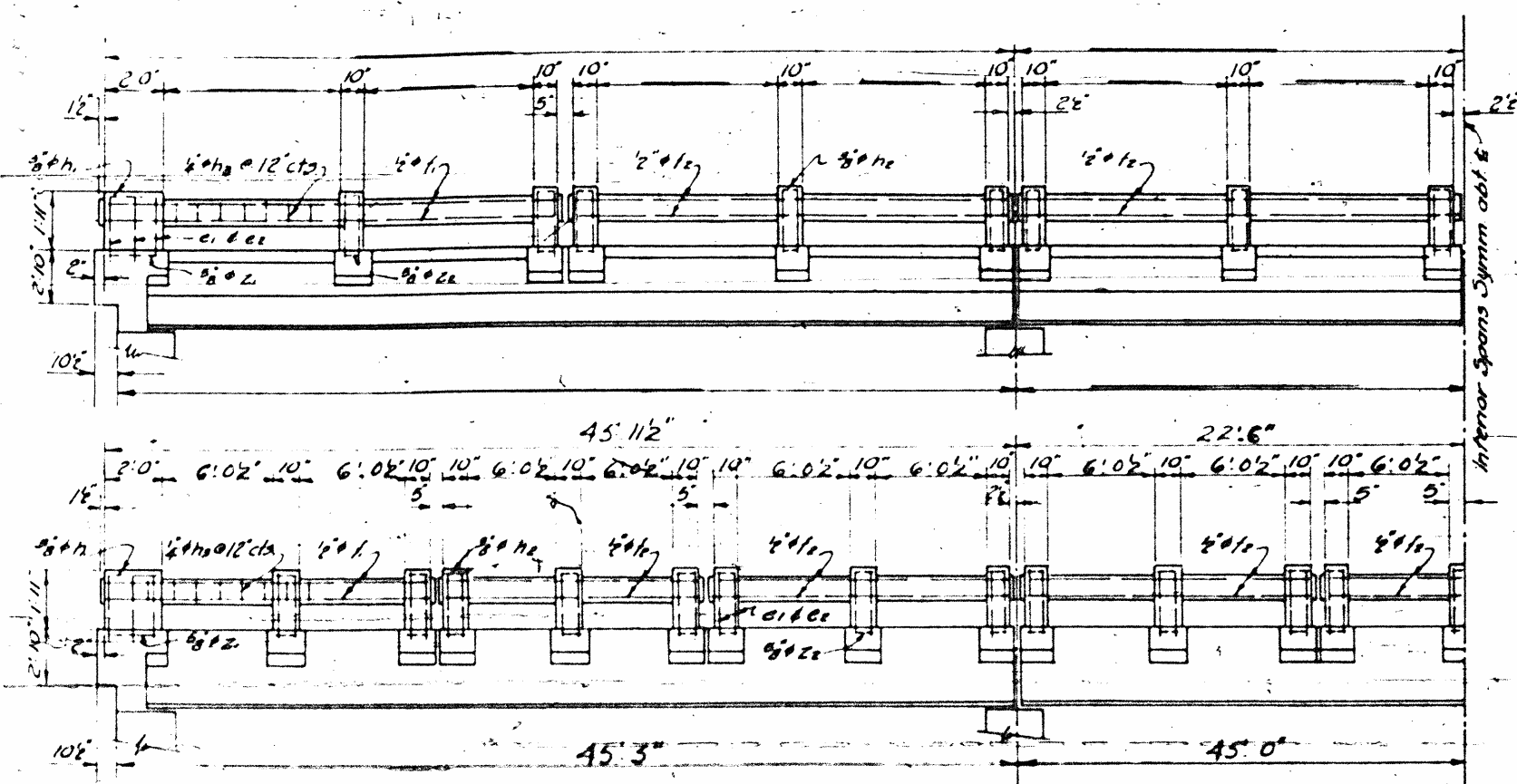
PROJECT NO. 725
 COUNTY
 STATION:

Item	Quantity	Unit	Value
Concrete	12	282	
Steel	6	150	
Timber	6	132	
Other			
TOTAL	12	282	

SPECIAL
 DESIGNED BY: _____ DATE: _____
 DRAWN BY: _____ DATE: _____
 CHECKED BY: _____ DATE: _____

STATE OF NORTH CAROLINA
 STATE HIGHWAY AND
 PUBLIC WORKS COMMISSION
 FOR BRIDGE OVER NORTH
 FORK NEW RIVER BETWEEN
 AND WAREY ROAD
 SHEET 51 OF 9

PER DRAW	STATE	PROJECT NO.	SHEET NO.	TOTAL SHEETS
3	N. C.	7125	2	6
DATE: 5-23-11				



BILL OF MATERIAL FOR SIX SPANS @ 45' 0"

Bar No.	Size	Type	Length	Weight
a	3/4"	7	28' 1"	1600
ag	3/4"	2	27' 4"	160
b	5/8"	4	23' 5"	860
bc	5/8"	4	26' 8"	436
bd	5/8"	4	26' 5"	140
c	220	4	3' 8"	550
ce	220	4	4' 3"	625
f	16	20	15' 2"	160
fg	120	20	14' 7"	1247
h	4	50	5' 2"	75
hr	100	50	2' 10"	111
hs	580	50	2' 7"	250
l	8	71	14' 2"	871
lg	16	71	17' 0"	409
lh	40	71	16' 0"	1000
m	180	71	5' 16"	101
mg	36	71	2' 10"	70
n	4	41	6' 5"	38
ng	160	41	7' 1"	768

Reinforcing Steel 47000 480

Class II Concrete 2200 50 lbs

Structural Steel (Imperial) Method A, Waterproofing Method B, 100

TABLE OF BEARING PLATE

No.	Size	Shape
8 1/2"	8' 3/4" x 11' 0"	Beveled
10 1/2"	8' 3/4" x 11' 0"	Beveled
24 1/2"	9' 3/4" x 11' 0"	Flat
16 1/4"	8' 3/4" x 11' 0"	Beveled
4 1/2"	8' 3/4" x 11' 0"	Beveled
24 1/2"	9' 3/4" x 11' 0"	Flat

PROJECT NO. 7125

ASHL COUNTY

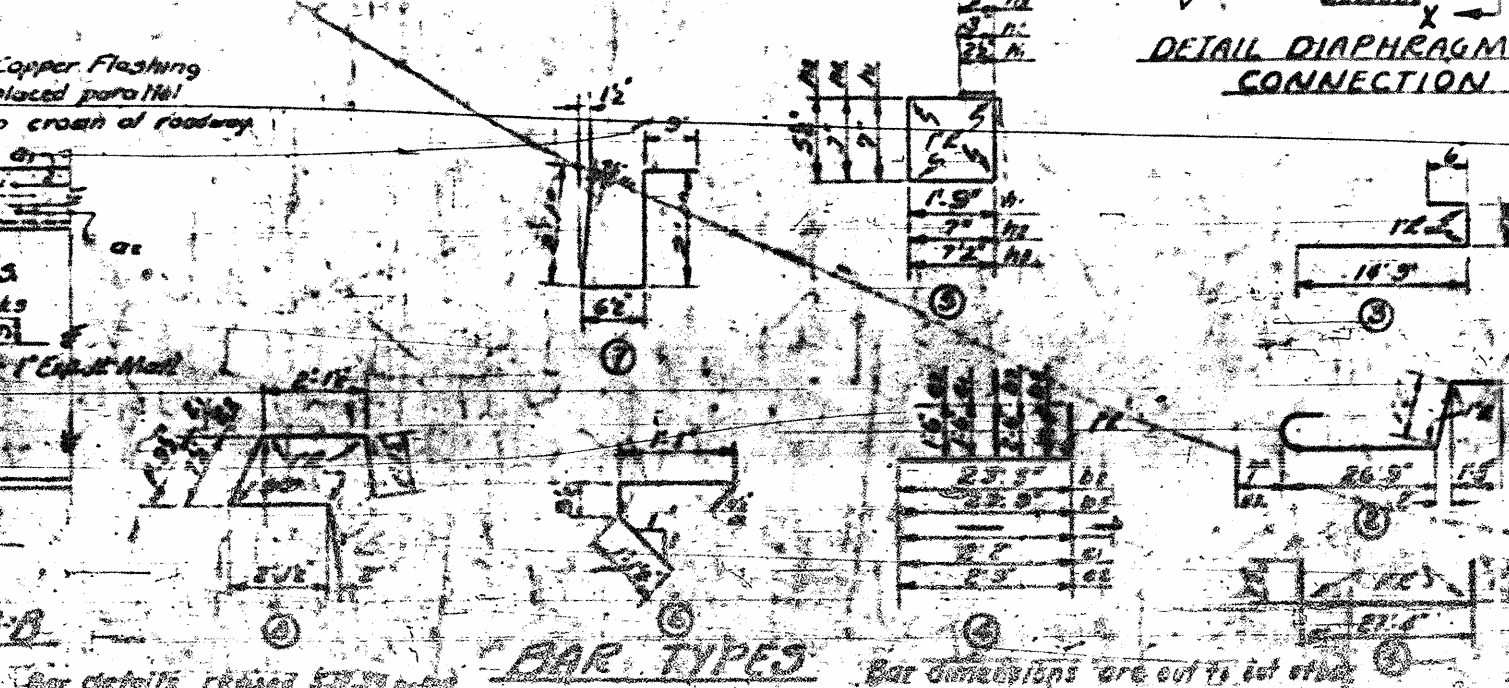
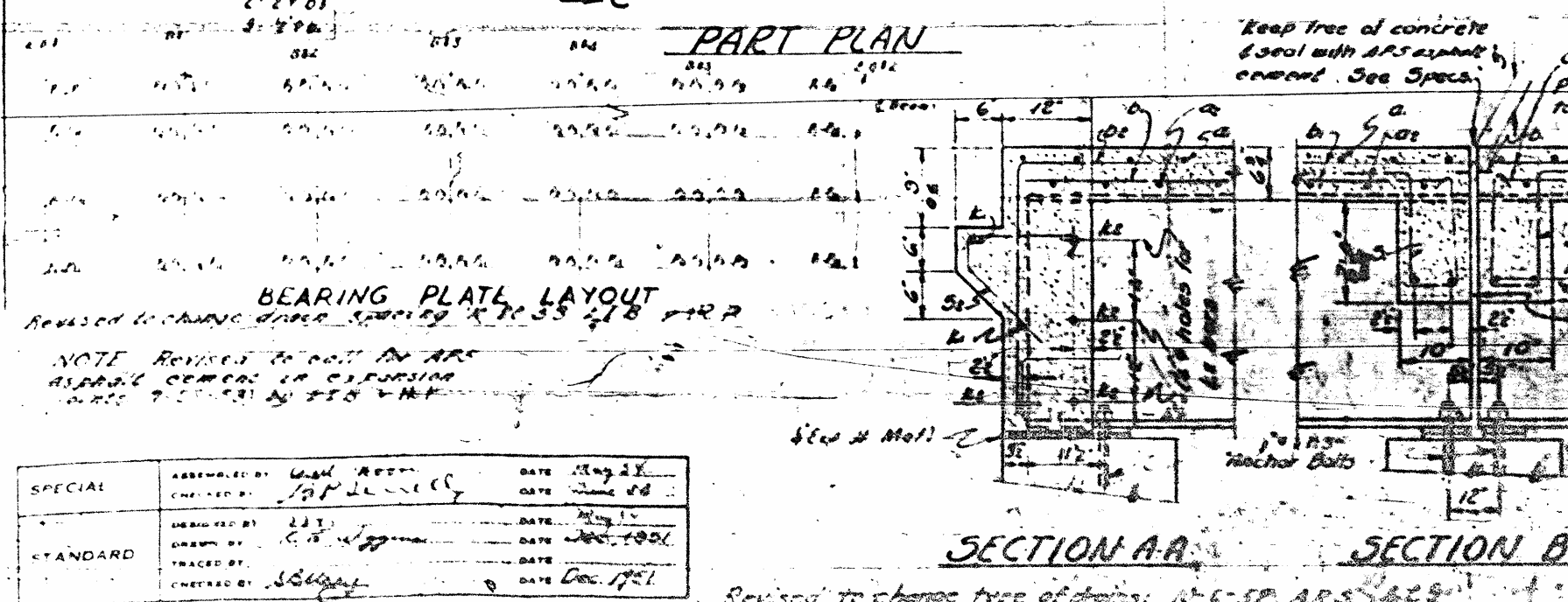
STATION: 31.19

STATE OF NORTH CAROLINA
STATE HIGHWAY AND PUBLIC WORKS COMMISSION

STANDARD I BEAM SUPERSTRUCTURE WITH R.C. FLOOR AND RAIL 26' ROADWAY

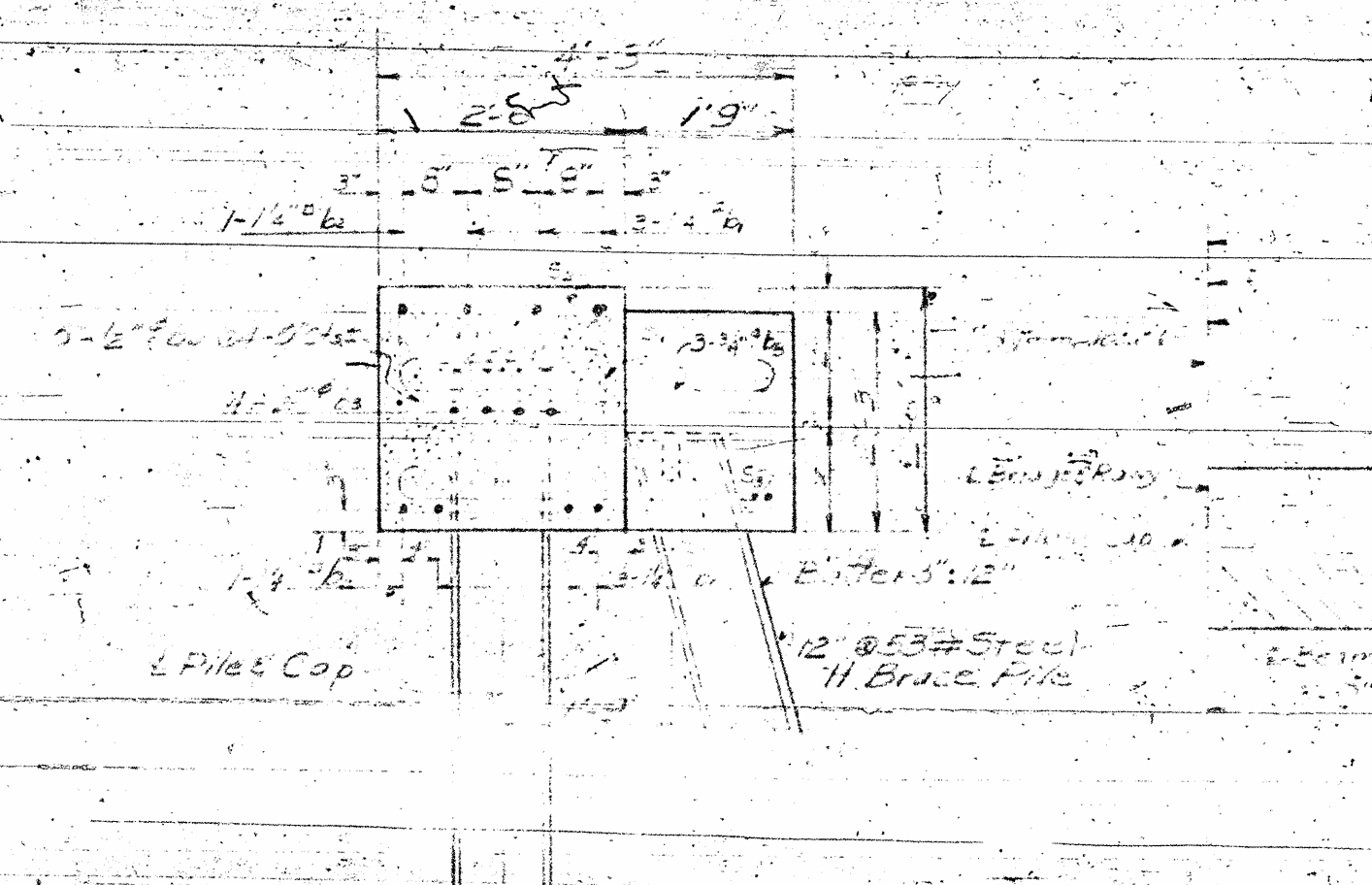
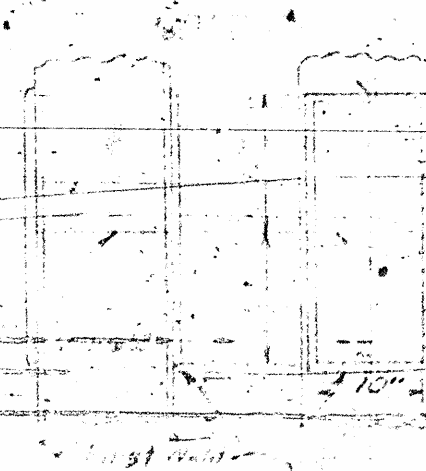
DEC. 1951

Prepared by: [Signature]
Checked by: [Signature]



SPECIAL

APPROVED BY: [Signature]	DATE: May 23, 1951
DESIGNED BY: [Signature]	DATE: June 11, 1951
CHECKED BY: [Signature]	DATE: June 11, 1951
DATE: Dec. 1951	



STANDARD SECTION FOR STEEL PIPE PILE GUARD

HALF PLAN - END VIEW

SECTION B-B



HALF ELEVATION

BILL OF MATERIAL

ITEM	QUANTITY	SIZE	DESCRIPTION
1	1	12"	12 #53# STEEL H. BRUCE PILE
2	1	12"	STEEL PILE CAP
3	1	12"	STEEL BRACE PILE
4	1	12"	STEEL BRACE PILE
5	1	12"	STEEL BRACE PILE
6	1	12"	STEEL BRACE PILE
7	1	12"	STEEL BRACE PILE
8	1	12"	STEEL BRACE PILE
9	1	12"	STEEL BRACE PILE
10	1	12"	STEEL BRACE PILE
11	1	12"	STEEL BRACE PILE
12	1	12"	STEEL BRACE PILE
13	1	12"	STEEL BRACE PILE
14	1	12"	STEEL BRACE PILE
15	1	12"	STEEL BRACE PILE
16	1	12"	STEEL BRACE PILE
17	1	12"	STEEL BRACE PILE
18	1	12"	STEEL BRACE PILE
19	1	12"	STEEL BRACE PILE
20	1	12"	STEEL BRACE PILE
21	1	12"	STEEL BRACE PILE
22	1	12"	STEEL BRACE PILE
23	1	12"	STEEL BRACE PILE
24	1	12"	STEEL BRACE PILE
25	1	12"	STEEL BRACE PILE
26	1	12"	STEEL BRACE PILE
27	1	12"	STEEL BRACE PILE
28	1	12"	STEEL BRACE PILE
29	1	12"	STEEL BRACE PILE
30	1	12"	STEEL BRACE PILE
31	1	12"	STEEL BRACE PILE
32	1	12"	STEEL BRACE PILE
33	1	12"	STEEL BRACE PILE
34	1	12"	STEEL BRACE PILE
35	1	12"	STEEL BRACE PILE
36	1	12"	STEEL BRACE PILE
37	1	12"	STEEL BRACE PILE
38	1	12"	STEEL BRACE PILE
39	1	12"	STEEL BRACE PILE
40	1	12"	STEEL BRACE PILE
41	1	12"	STEEL BRACE PILE
42	1	12"	STEEL BRACE PILE
43	1	12"	STEEL BRACE PILE
44	1	12"	STEEL BRACE PILE
45	1	12"	STEEL BRACE PILE
46	1	12"	STEEL BRACE PILE
47	1	12"	STEEL BRACE PILE
48	1	12"	STEEL BRACE PILE
49	1	12"	STEEL BRACE PILE
50	1	12"	STEEL BRACE PILE

By John E. ...
 Engr. Seal El. Ent. Port. ...

PROJECT NO. 7125

COUNTY

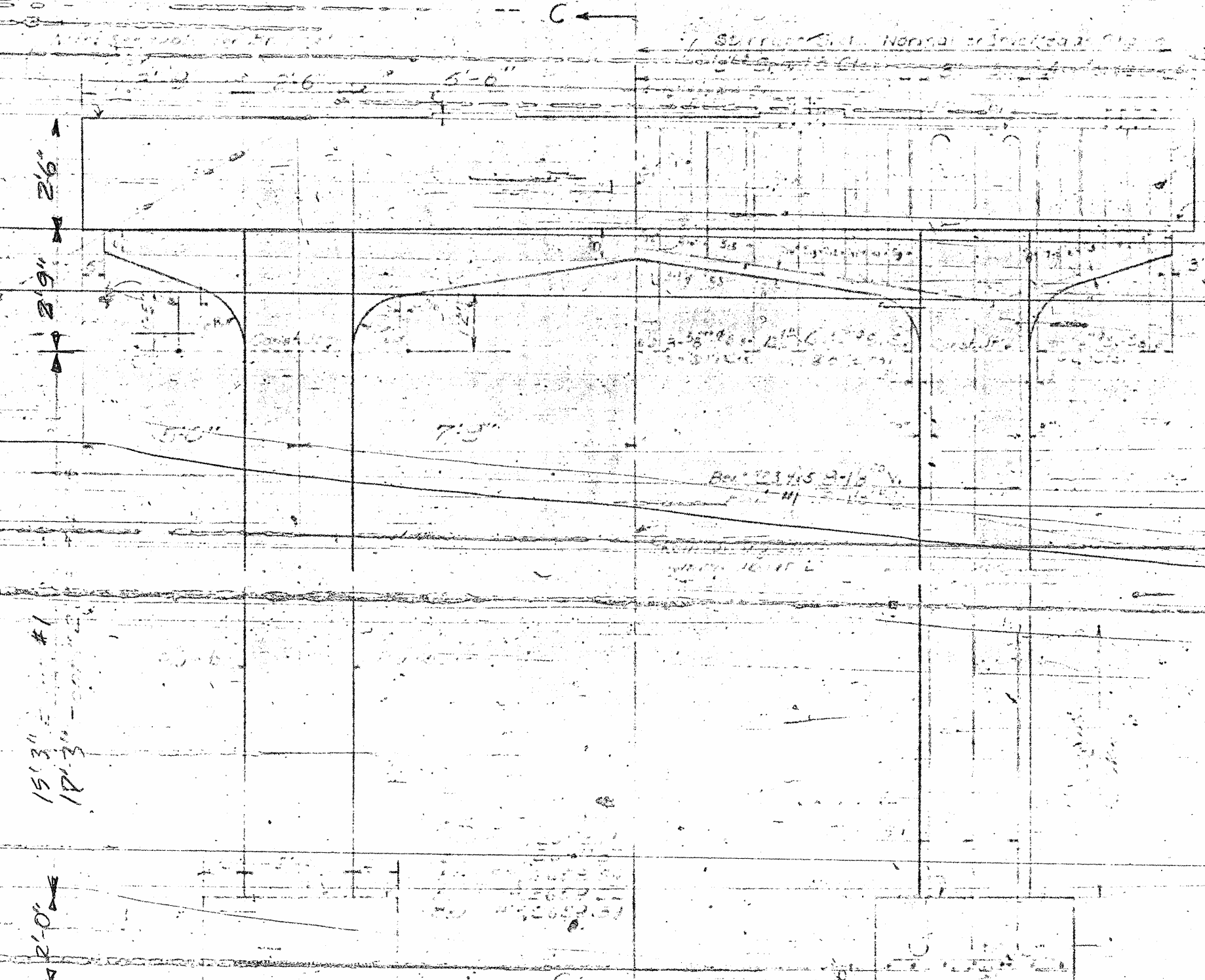
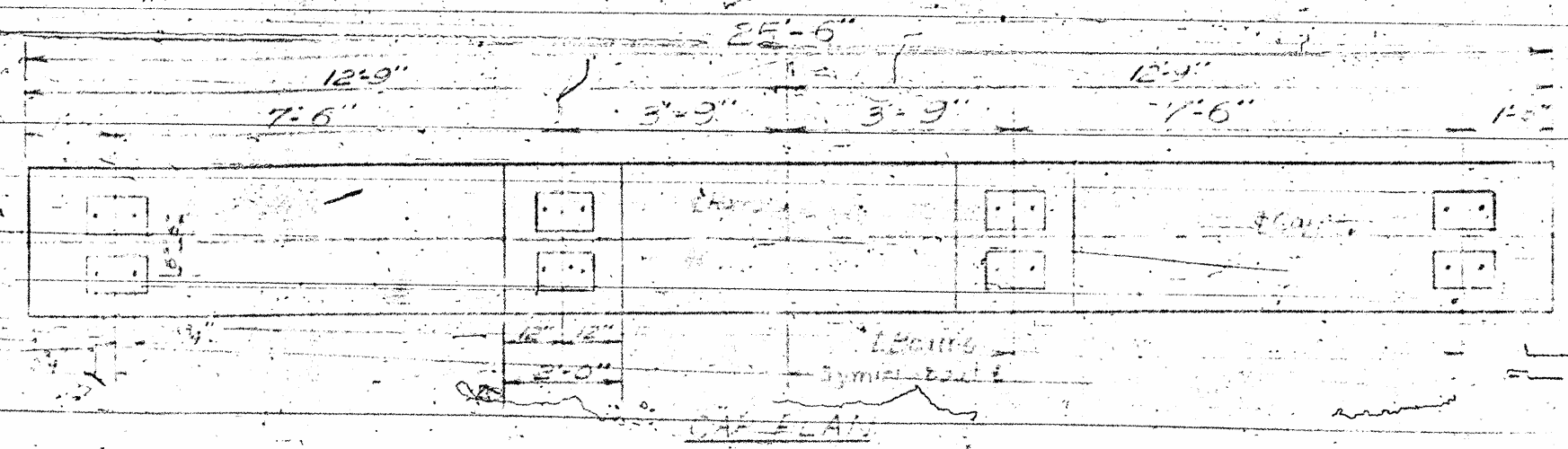
STATION:

STATE OF NORTH CAROLINA
 STATE HIGHWAY AND
 PUBLIC WORKS COMMISSION

END PLAN

SPECIAL
 DESIGNED BY
 DRAWN BY
 CHECKED BY

FED. ROAD DIST. NO.	STATE	PROJECT NO.	SHEET NO.	TOTAL SHEETS
9	N. C.	7125	52	8



FLOOR MATERIAL FOR ONE BENT (DECK)

NO.	SIZE	TYPE	QUANTITY
01	4		
02	7		
03	4		
04	16		

PROJECT NO. 7125
 COUNTY
 STATION:

STATE OF NORTH CAROLINA
 STATE HIGHWAY AND
 PUBLIC WORKS COMMISSION
 DIVISION OF HIGHWAYS
 INTERIOR
 BENTS

DESIGNED BY
 CHECKED BY

SPECIAL
 DESIGNED BY
 CHECKED BY