

8/17/99

03-SEP-2020 14:38  
N:\2016\21001889\NCDOT\_R-5020B US 701 Widening\Water Sanitary\R-5020B.ut\_rdi7.UC27\_psh.dgn  
KCI USER:MM

**NOTE:**  
1. CONTRACTOR SHALL FIELD LOCATE THE EXISTING SEWER SERVICE LINES, AND CONNECT THE PROPOSED CLEANOUT TO THE EXISTING SEWER SERVICE LINE.  
2. FOR PROFILES SL-K AND SL-L, SEE SHEETS UC-36 AND UC-37.

# SANITARY SEWER

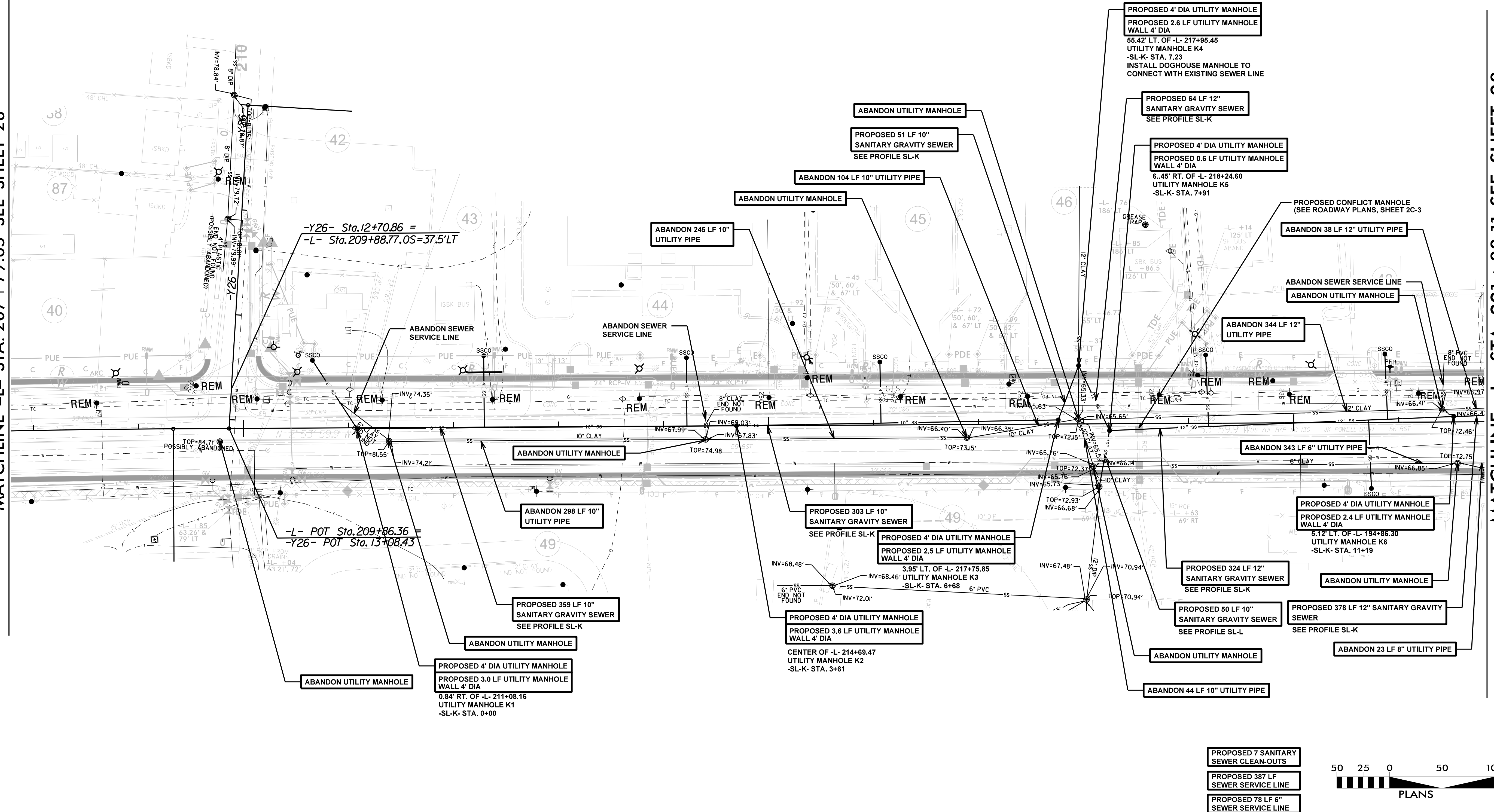


PROJECT REFERENCE NO. <b>R-5020B</b>	SHEET NO. <b>UC-27</b>
DESIGNED BY: <b>DK</b>	
DRAWN BY: <b>AP</b>	
CHECKED BY: <b>MM</b>	
APPROVED BY:	
REVISED:	
NORTH CAROLINA DEPARTMENT OF TRANSPORTATION UTILITIES ENGINEERING SEC. PHONE: (919) 707-6690 FAX: (919) 250-4151	
KCI Engineers • Planners • Scientists • Construction Managers 4519 Falls of Noe Road, Suite 400 Raleigh, NC 27609 Phone (919) 783-9214 • Fax (919) 783-9266 License No. C-764	

## UTILITY CONSTRUCTION

**DOCUMENT NOT CONSIDERED FINAL  
UNLESS ALL SIGNATURES COMPLETED**

MATCHLINE -L- STA. 207 + 79.65 SEE SHEET 26



MATCHLINE -L- STA. 221 + 83.11 SEE SHEET 28

PROPOSED 7 SANITARY SEWER CLEAN-OUTS  
 PROPOSED 387 LF SEWER SERVICE LINE  
 PROPOSED 78 LF 6" SEWER SERVICE LINE

