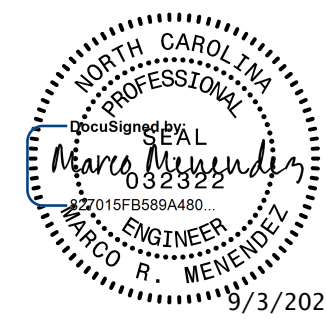
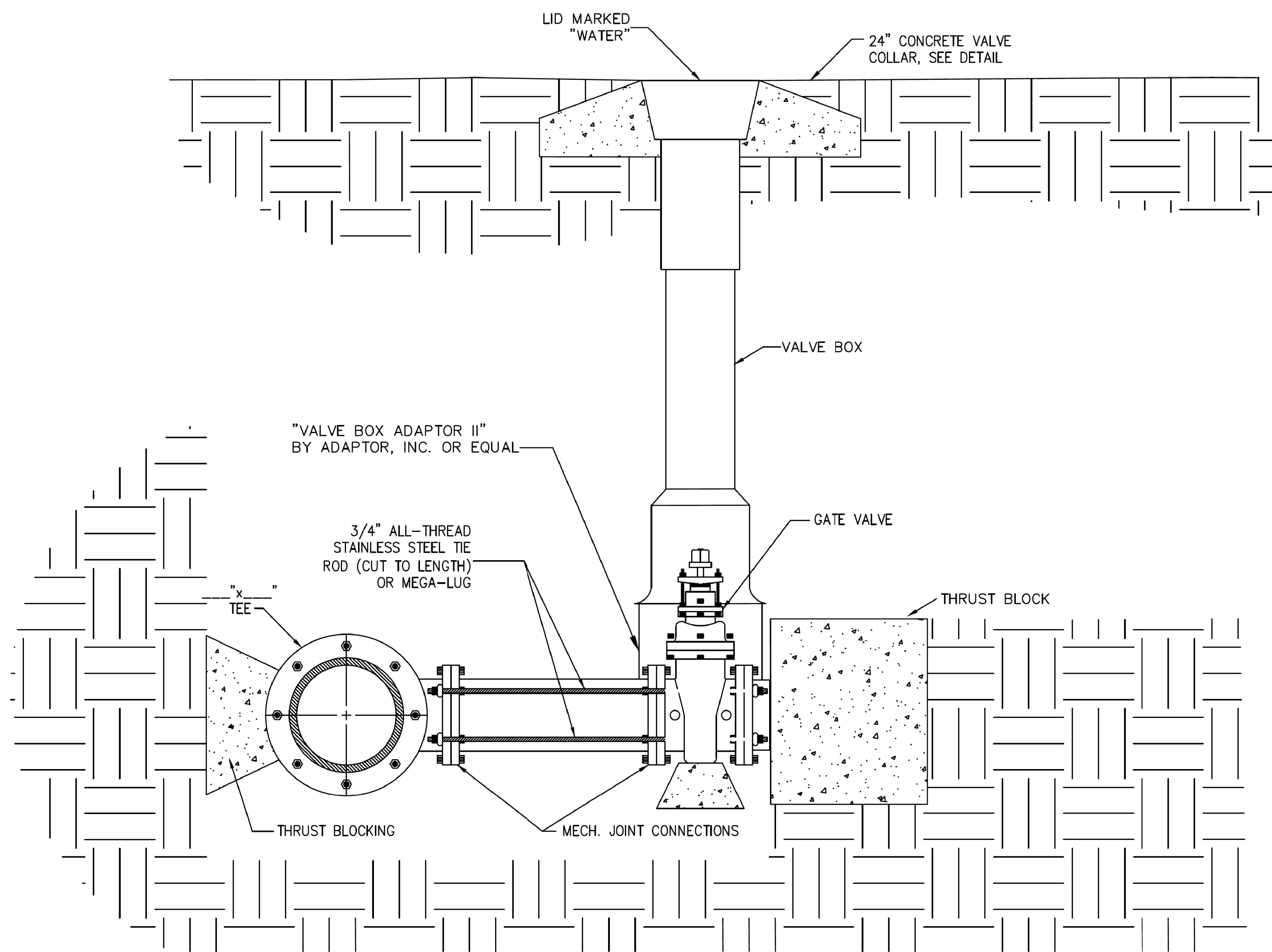


5/14/99

BRANCH STUB-OUT FOR FUTURE CONNECTION (6-INCH DIA AND LARGER MAIN)

PROJECT REFERENCE NO. <i>R-5020B</i>	SHEET NO. <i>UC-3K</i>
DESIGNED BY: <i>DK</i>	
DRAWN BY: <i>AP</i>	
CHECKED BY: <i>MM</i>	
APPROVED BY:	
REVISED:	
NORTH CAROLINA DEPARTMENT OF TRANSPORTATION 9/3/2020	
UTILITIES ENGINEERING SEC. PHONE: (919) 707-6690 FAX: (919) 250-4151	UTILITY CONSTRUCTION PLANS ONLY

UTILITY CONSTRUCTION
DOCUMENT NOT CONSIDERED FINAL
UNLESS ALL SIGNATURES COMPLETED



NOTES:

1. CONCRETE SHALL NOT CONTACT BOLTS OR ENDS OF MECHANICAL FITTINGS.
2. ALL TIE RODS AND NUTS TO BE STAINLESS STEEL.
3. LENGTH OF PIPE SHALL BE MINIMUM NEEDED TO INSTALL FITTINGS. VALVE SHALL BE BOLTED DIRECTLY TO TEE WHENEVER POSSIBLE.

ROD REQUIREMENTS	
BRANCH SIZE	NO. OF RODS
4"	2 EA.
6"	2 EA.
8"	4 EA.
12"	4 EA.
16"	6 EA.
20"	6 EA.
24"	6 EA.

I:\MSB_2020_1804\Planning\Water_Sanitary\R-5020B-ut_UC03A.dtl.dgn
 R-5020B-ut_UC03A.dwg
 5/14/99