

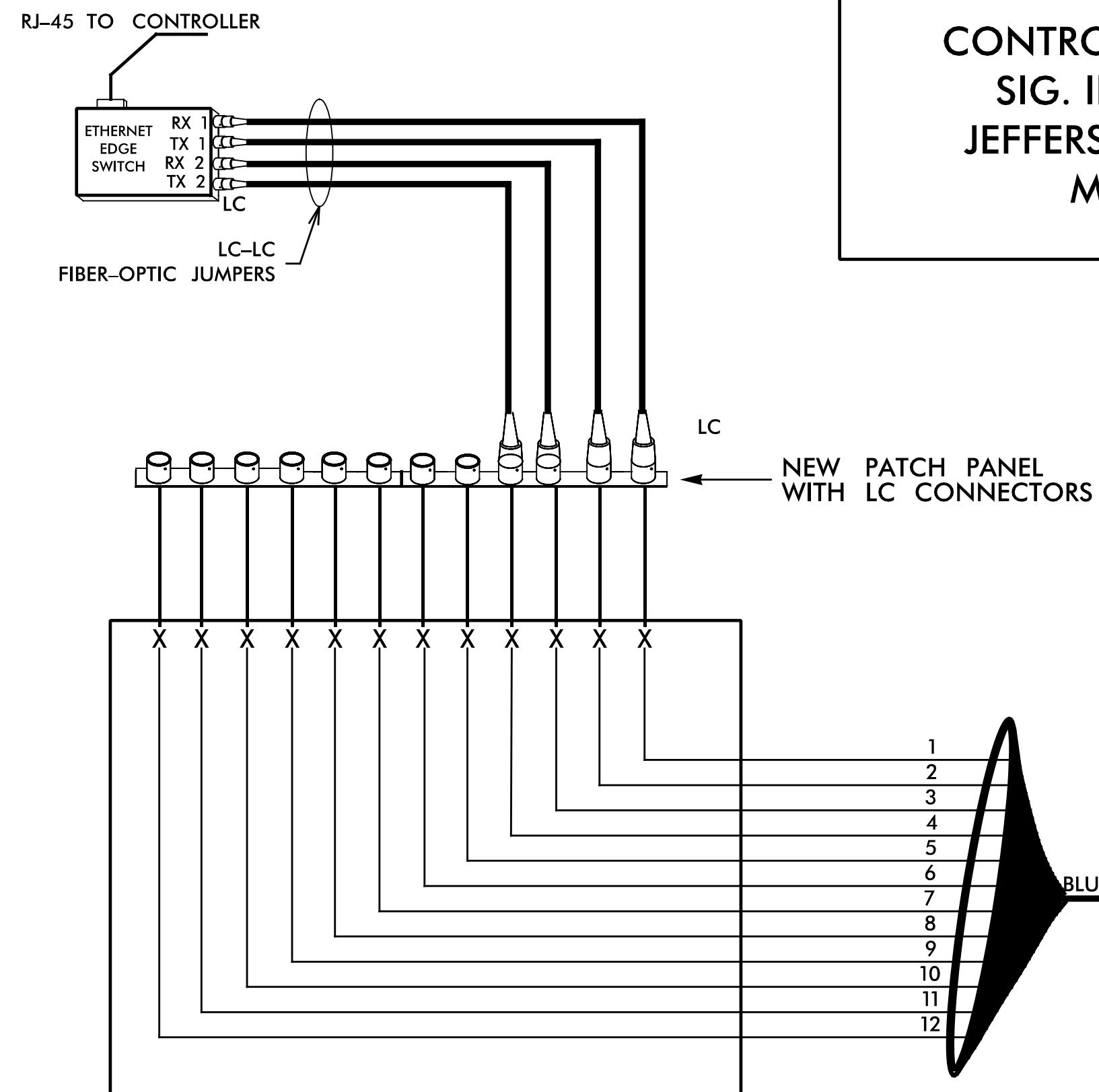
NOTES

- 1) FIVE (5) DAYS PRIOR TO BEGINNING WORK ON THE SIGNAL SYSTEM, CONTACT THE DIVISION 6 TRAFFIC SIGNAL SUPERVISOR AT (910) 364-0606 TO PROGRAM THE NEW FIELD ETHERNET SWITCHES WITH THE NECESSARY NETWORK CONFIGURATION DATA, INCLUDING BUT NOT LIMITED TO: THE PROJECT IP ADDRESS, DEFAULT GATEWAY, SUBNET MASK AND VLAN ID INFORMATION. NOTIFY DIVISION 6 TRAFFIC SIGNAL SUPERVISOR AFTER ALL WORK IS PERFORMED TO ENSURE THAT ALL FIBER CIRCUITS ARE FUNCTIONING PROPERLY. WORK IS NOT COMPLETE UNTIL THE SIGNAL SYSTEM IS BACK UP AND OPERATIONAL.
- 2) CONTRACTOR TO RECORD EXISTING SPLICE ARRANGEMENT FOR COMPARISON TO THE SUPPLIED SPLICE DETAILS. IF DISCREPANCIES EXIST, CONTACT THE ENGINEER TO DETERMINE HOW TO PROCEED WITH RESPLICING. PROVIDE AS-BUILT PLANS TO THE ENGINEER IF FINAL SPLICE ARRANGEMENT DIFFERS FROM THE SUPPLIED SPLICE DETAILS.
- 3) ETHERNET SWITCH TERMINATION CONFIGURATIONS ARE GENERIC. CONTRACTOR IS RESPONSIBLE FOR DETERMINING AND ENSURING PROPER TERMINATIONS.
- 4) INCLUDE ON THE COVER OF EACH SPLICE TRAY THE FOLLOWING: REFERENCE SECTION 1731 "FIBER OPTIC SPLICE ENCLOSURE"
 - a) SPLICE LOCATION
 - b) DATE
 - c) COMPANY NAME
 - d) NAME OF INDIVIDUAL PERFORMING THE SPLICING
- 5) PRIOR TO INSTALLING THE COVER ON THE SPLICE TRAY TAKE A DIGITAL PHOTOGRAPH SHOWING THE SPLICE TRAY AND INFORMATION SHOWN ABOVE (1-4) AND SUBMIT PHOTOGRAPH ALONG WITH OTDR TEST RESULTS.
- 6) UNUSED FIBERS LEFT COILED AND STORED IN SPLICE TRAY
- 7) UNUSED BUFFER TUBES LEFT COILED AND STORED IN SPLICE ENCLOSURE

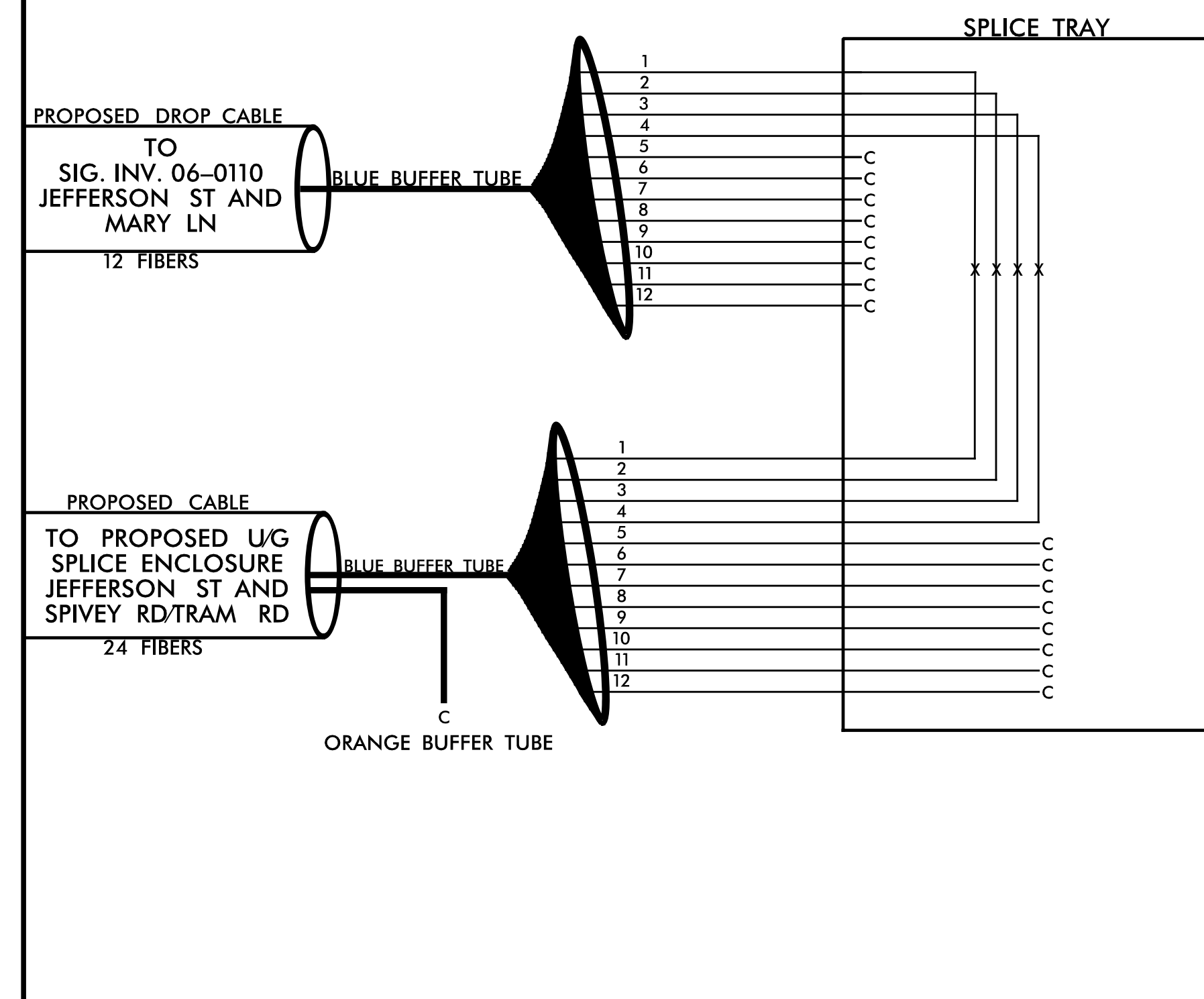
LEGEND

COLOR CODE TIA/EIA 598-A		X = FUSION SPLICE INDIVIDUAL FIBER
(1) BLUE	(7) RED	C = CAP AND SEAL
(2) ORANGE	(8) BLACK	EXPRESS = EXPRESS ENTIRE BUFFER TUBE /FIBERS THROUGH WITHOUT CUTTING
(3) GREEN	(9) YELLOW	BUFFER SPLICE = SPLICE ALL FIBERS IN BUFFER TUBE COLOR TO COLOR
(4) BROWN	(10) VIOLET	
(5) SLATE	(11) ROSE	
(6) WHITE	(12) AQUA	

**CONTROLLER CABINET
SIG. INV. 06-0110
JEFFERSON ST AND
MARY LN**



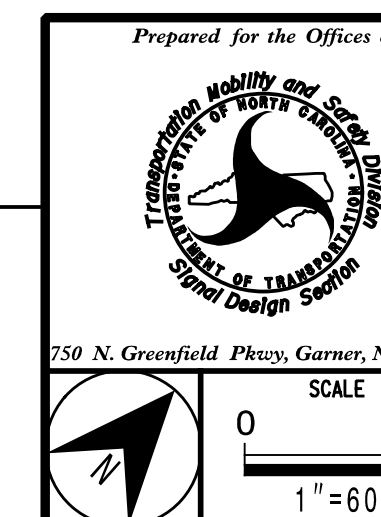
**PROPOSED U/G SPLICE
ENCLOSURE
JEFFERSON ST AND
MARY LN**



NC Dept of Transportation
Division of Highways
Final Drawing Date: _____
ITS & Signals Unit

SEPI
Engineering & Construction, Inc.

1 Glenwood Avenue
Raleigh, NC 27603
Tel: 919.789.9977
Fax: 919.789.9591
License: C-2197



**COMMUNICATIONS CABLE AND
CONDUIT ROUTING PLANS**

DIVISION 6 COLOMBUS COUNTY WHITEVILLE
PLAN DATE: March 2020 REVIEWED BY: G. G. Murr, Jr.
PREPARED BY: M. Ishak REVIEWED BY:

REVISIONS	INIT.	DATE

DocuSigned by:
Gene G. Murr, Jr.
SIGNATURE DATE
CADD File name:



SCALE
0 60
1" = 60'