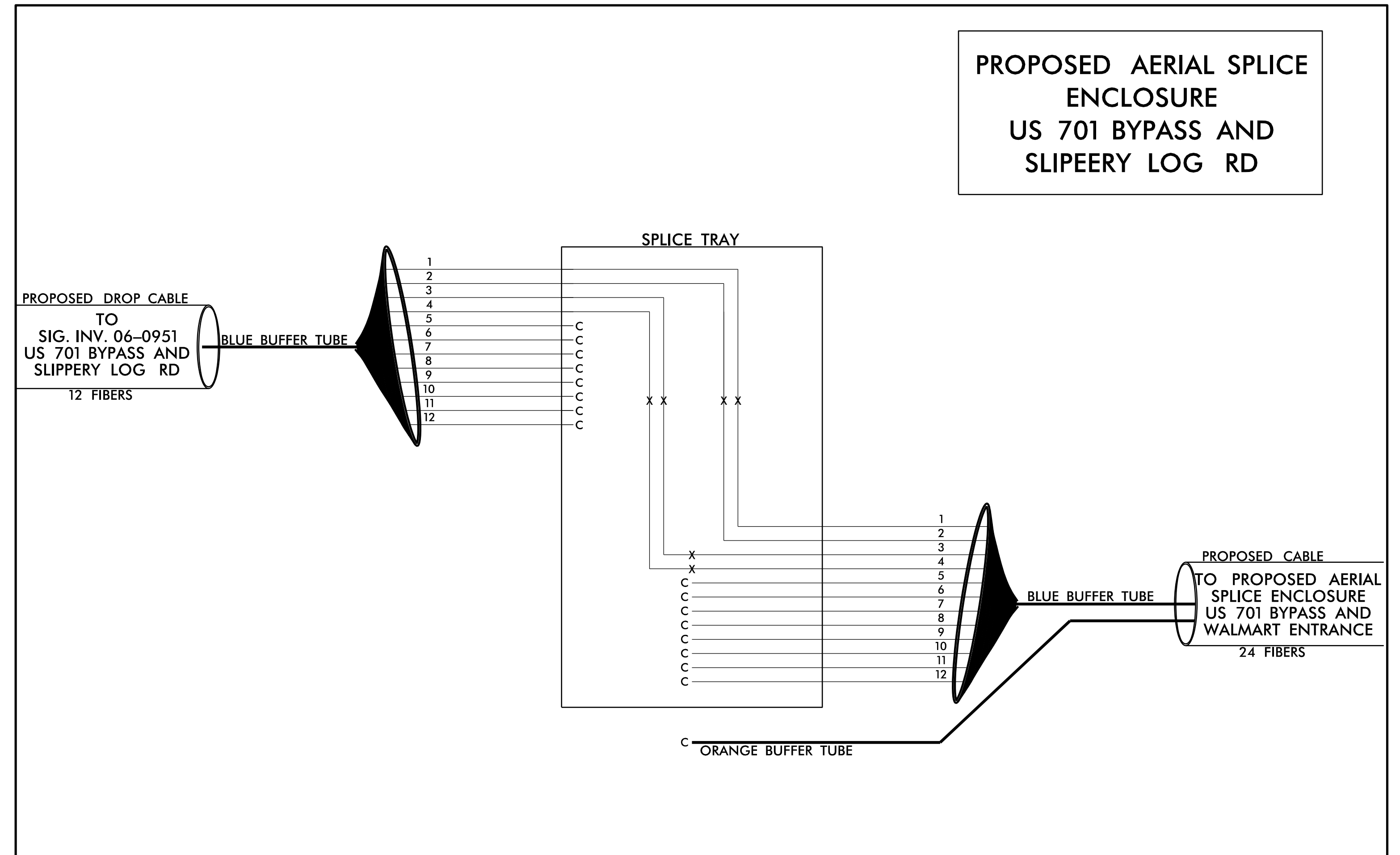
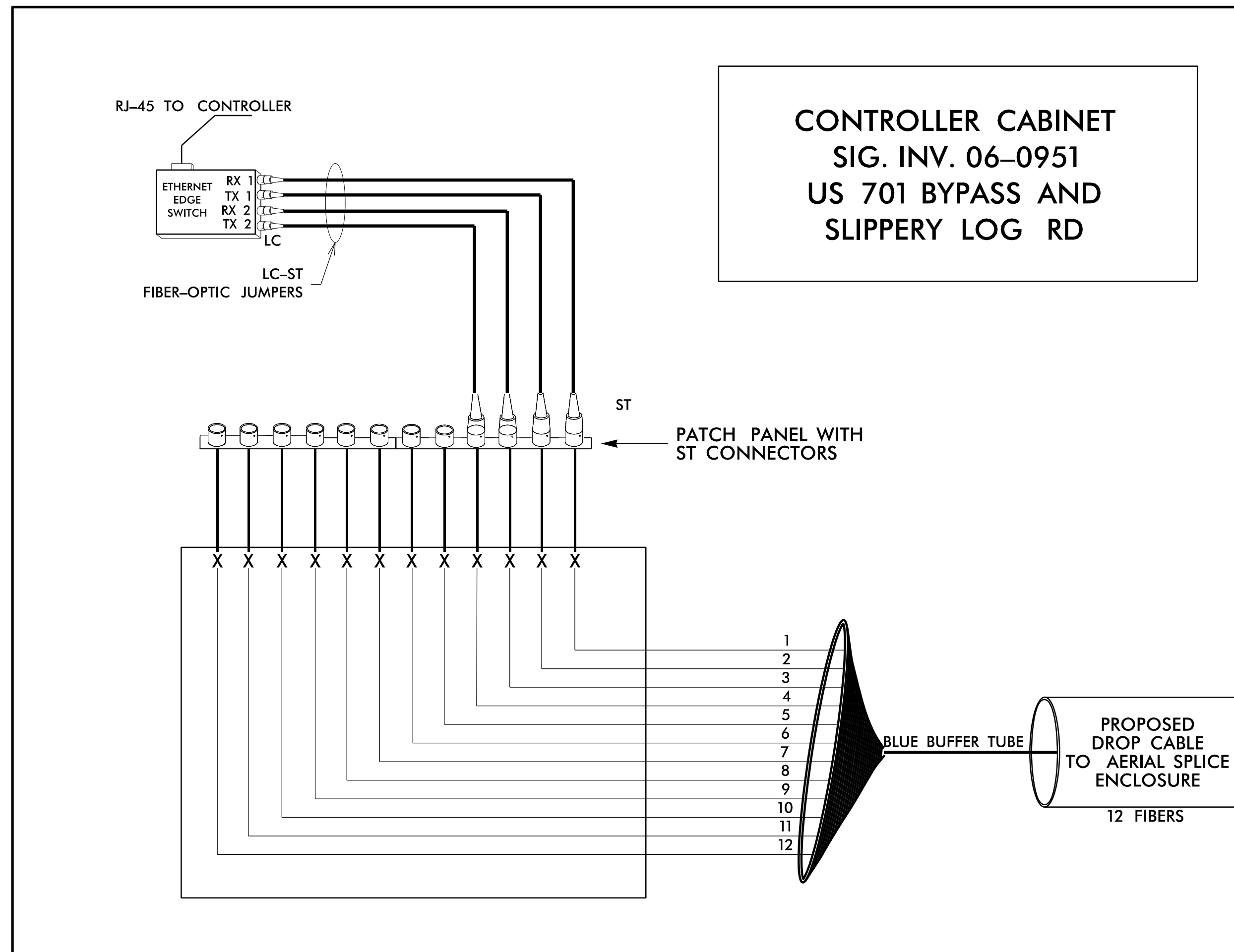


NOTES

- 1) FIVE (5) DAYS PRIOR TO BEGINNING WORK ON THE SIGNAL SYSTEM, CONTACT THE DIVISION 6 TRAFFIC SIGNAL SUPERVISOR AT (910) 364-0606 TO PROGRAM THE NEW FIELD ETHERNET SWITCHES WITH THE NECESSARY NETWORK CONFIGURATION DATA, INCLUDING BUT NOT LIMITED TO: THE PROJECT IP ADDRESS, DEFAULT GATEWAY, SUBNET MASK AND VLAN ID INFORMATION. NOTIFY DIVISION 6 TRAFFIC SIGNAL SUPERVISOR AFTER ALL WORK IS PERFORMED TO ENSURE THAT ALL FIBER CIRCUITS ARE FUNCTIONING PROPERLY. WORK IS NOT COMPLETE UNTIL THE SIGNAL SYSTEM IS BACK UP AND OPERATIONAL.
- 2) CONTRACTOR TO RECORD EXISTING SPLICE ARRANGEMENT FOR COMPARISON TO THE SUPPLIED SPLICE DETAILS. IF DISCREPANCIES EXIST, CONTACT THE ENGINEER TO DETERMINE HOW TO PROCEED WITH RESPLICING. PROVIDE AS-BUILT PLANS TO THE ENGINEER IF FINAL SPLICE ARRANGEMENT DIFFERS FROM THE SUPPLIED SPLICE DETAILS.
- 3) ETHERNET SWITCH TERMINATION CONFIGURATIONS ARE GENERIC. CONTRACTOR IS RESPONSIBLE FOR DETERMINING AND ENSURING PROPER TERMINATIONS.
- 4) INCLUDE ON THE COVER OF EACH SPLICE TRAY THE FOLLOWING: REFERENCE SECTION 1731 "FIBER OPTIC SPLICE ENCLOSURE"
a) SPLICE LOCATION
b) DATE
c) COMPANY NAME
d) NAME OF INDIVIDUAL PERFORMING THE SPLICING
- 5) PRIOR TO INSTALLING THE COVER ON THE SPLICE TRAY TAKE A DIGITAL PHOTOGRAPH SHOWING THE SPLICE TRAY AND INFORMATION SHOWN ABOVE (1-4) AND SUBMIT PHOTOGRAPH ALONG WITH OTDR TEST RESULTS.
- 6) UNUSED FIBERS LEFT COILED AND STORED IN SPLICE TRAY
- 7) UNUSED BUFFER TUBES LEFT COILED AND STORED IN SPLICE ENCLOSURE

LEGEND

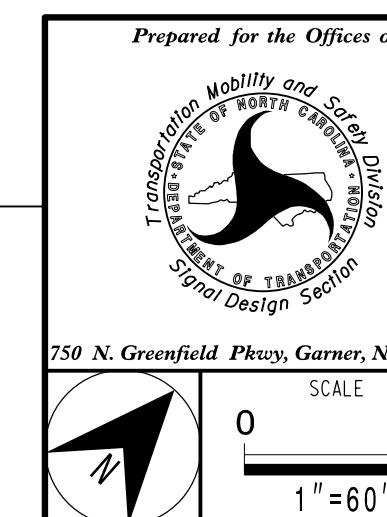
- COLOR CODE**
TIA/EIA 598-A
- | | |
|------------|-------------|
| (1) BLUE | (7) RED |
| (2) ORANGE | (8) BLACK |
| (3) GREEN | (9) YELLOW |
| (4) BROWN | (10) VIOLET |
| (5) SLATE | (11) ROSE |
| (6) WHITE | (12) AQUA |
- X = FUSION SPLICE INDIVIDUAL FIBER
C = CAP AND SEAL
- EXPRESS** = EXPRESS ENTIRE BUFFER TUBE /FIBERS THROUGH WITHOUT CUTTING
- BUFFER SPLICE** = SPLICE ALL FIBERS IN BUFFER TUBE COLOR TO COLOR



NC Dept of Transportation
Division of Highways
Final Drawing Date: _____
ITS & Signals Unit



1 Glenwood Avenue
Raleigh, NC 27603
Tel: 919.789.9977
Fax: 919.789.9591
License: C-2197



SPLICE DETAILS		SEAL	
DIVISION 6 COLOMBUS COUNTY WHITEVILLE		SEAL 14543	
PLAN DATE: March 2020	REVIEWED BY: G. G. Murr, Jr.		
PREPARED BY: M. Ishak	REVIEWED BY:		
REVISIONS	INIT.	DATE	
DocuSigned by: _____		DATE: _____	
CADD Filename: _____			