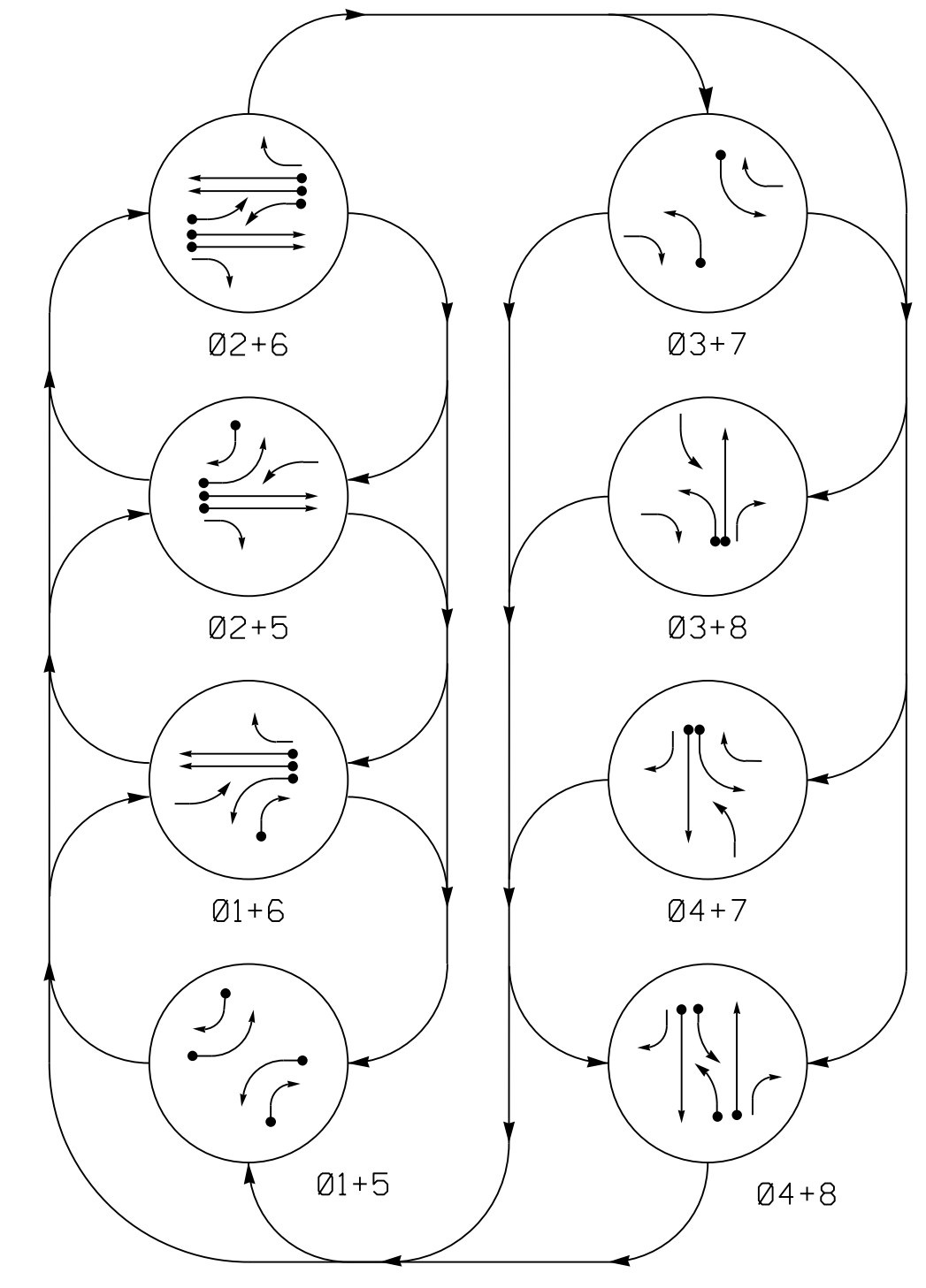


PHASING DIAGRAM

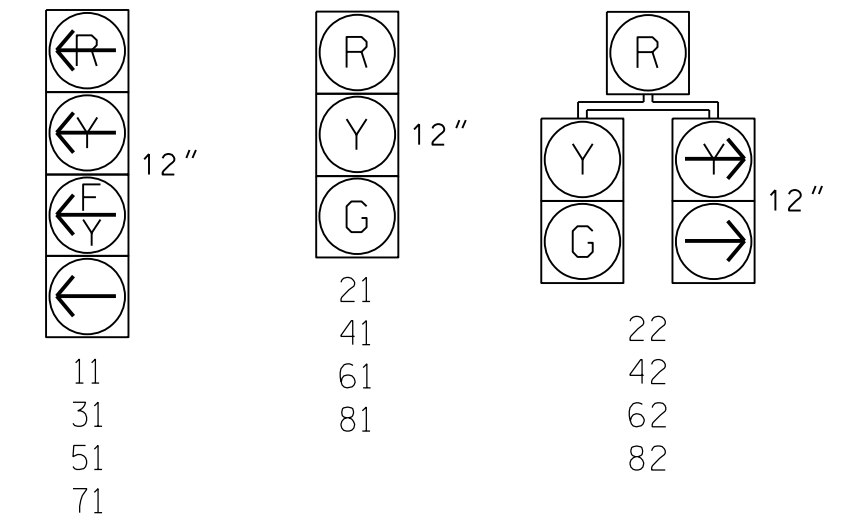


**PHASING DIAGRAM DETECTION LEGEND**

- DETECTED MOVEMENT
- UNDETECTED MOVEMENT (OVERLAP)
- UNSIGNALIZED MOVEMENT
- PEDESTRIAN MOVEMENT

SIGNAL FACE	PHASE							
	01+5	01+6	02+5	02+6	03+7	03+8	04+7	04+8
11	←	←	←	←	←	←	←	←
21	R	R	G	G	R	R	R	Y
22	R	R	G	G	R	R	R	Y
31	←	←	←	←	←	←	←	←
41	R	R	R	R	R	R	G	G
42	R	R	R	R	R	R	G	G
51	←	←	←	←	←	←	←	←
61	R	G	R	G	R	R	R	Y
62	R	G	R	G	R	R	R	Y
71	←	←	←	←	←	←	←	←
81	R	R	R	R	R	G	R	G
82	R	R	R	R	R	G	R	G

**SIGNAL FACE I.D.**  
All Heads L.E.D.

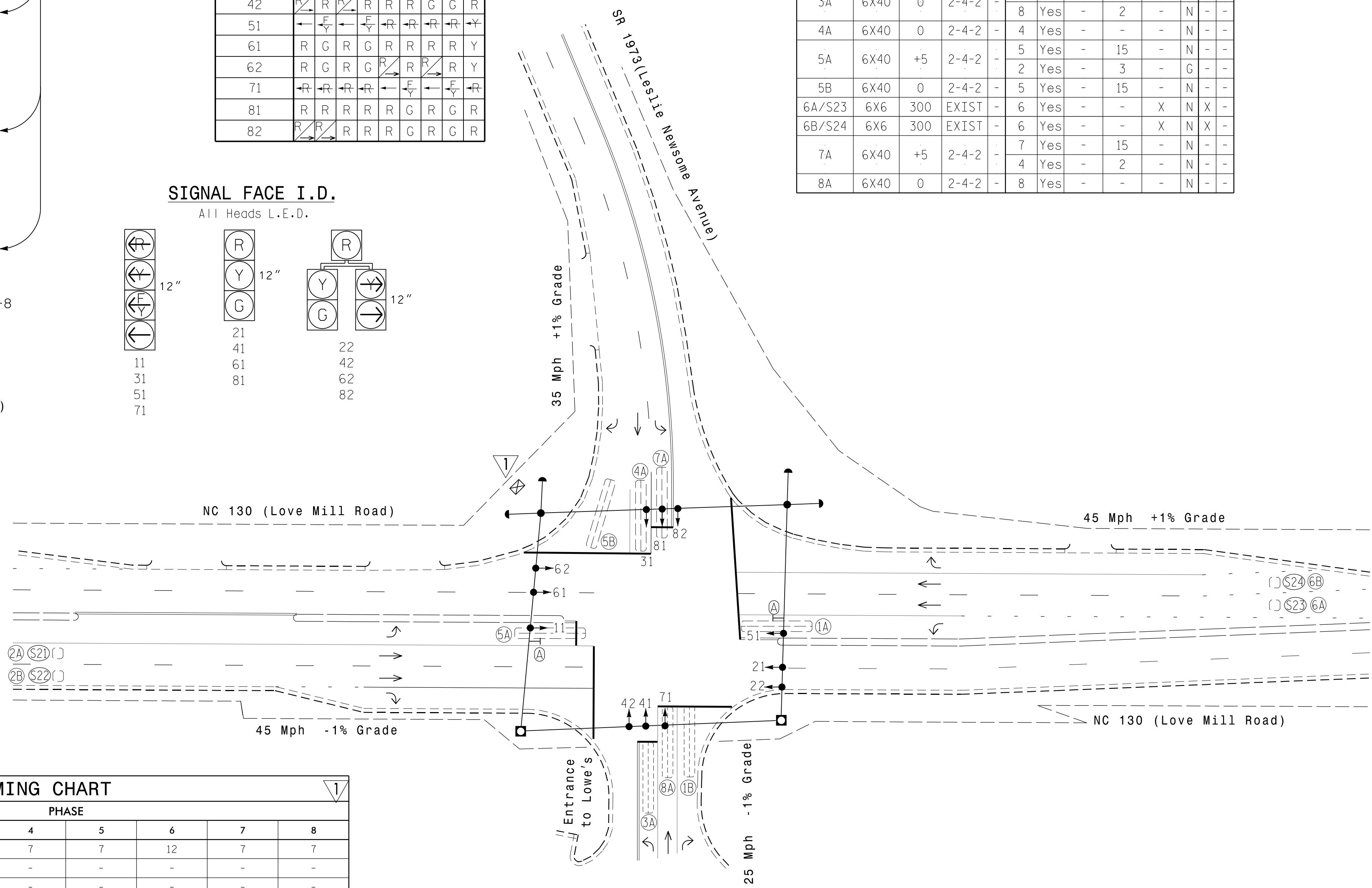


ASC/3 DETECTOR INSTALLATION CHART										
DETECTOR				PROGRAMMING						
LOOP	SIZE (FT)	DISTANCE FROM STOPBAR (FT)	TURNS	NEW LOOP	PHASE	CALLING	EXTEND TIME	DELAY TIME	USE ADDED INITIAL	TYPE
1A	6X40	0	2-4-2	-	1	Yes	-	15	-	N
1B	6X40	0	2-4-2	-	6	Yes	-	3	-	G
2A/S21	6X6	300	EXIST	-	2	Yes	-	-	X	N
2B/S22	6X6	300	EXIST	-	2	Yes	-	-	X	N
3A	6X40	0	2-4-2	-	3	Yes	-	15	-	N
4A	6X40	0	2-4-2	-	4	Yes	-	-	-	N
5A	6X40	+5	2-4-2	-	5	Yes	-	15	-	N
5B	6X40	0	2-4-2	-	2	Yes	-	3	-	G
6A/S23	6X6	300	EXIST	-	6	Yes	-	-	X	N
6B/S24	6X6	300	EXIST	-	6	Yes	-	-	X	N
7A	6X40	+5	2-4-2	-	7	Yes	-	15	-	N
8A	6X40	0	2-4-2	-	8	Yes	-	-	-	N

**8 Phase Fully Actuated System #10605**

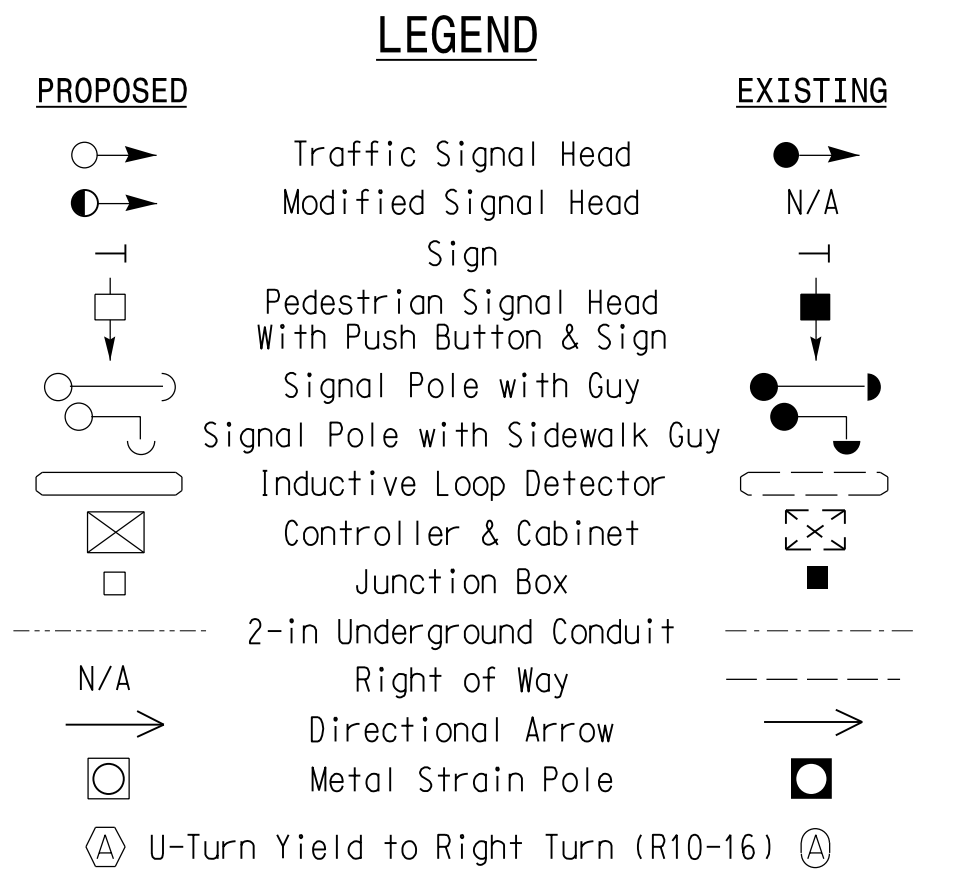
**NOTES**

- Refer to "Roadway Standard Drawings NCDOT" dated January 2018 and "Standard Specifications for Roads and Structures" dated January 2018.
- Do not program signal for late night flashing operation unless otherwise directed by the Engineer.
- Phase 1 and/or phase 5 may be lagged.
- Phase 3 and/or phase 7 may be lagged.
- Set all detector units to presence mode.
- Pavement markings are existing.
- Maximum times shown in timing chart are for free-run operation only. Coordinated signal system timing values supersede these values.



FEATURE	ASC/3 TIMING CHART							
	1	2	3	4	5	6	7	8
Min Green *	7	12	7	7	7	12	7	7
Walk *	-	-	-	-	-	-	-	-
Ped Clear	-	-	-	-	-	-	-	-
Veh. Extension *	2.0	6.0	2.0	2.0	2.0	6.0	2.0	2.0
Max 1 *	30	90	30	30	20	90	30	30
Yellow	3.0	4.6	3.0	3.8	3.0	4.6	3.0	3.8
Red Clear	2.8	1.4	2.8	2.6	2.8	1.4	2.8	2.6
Actuations B4 Add *	-	0	-	-	-	0	-	-
Seconds / Actuation *	-	1.5	-	-	-	1.5	-	-
Max Initial *	-	34	-	-	-	34	-	-
Time Before Reduction *	-	15	-	-	-	15	-	-
Time To Reduce *	-	30	-	-	-	30	-	-
Minimum Gap	-	3.0	-	-	-	3.0	-	-
Locking Detector	-	X	-	-	-	X	-	-
Recall Position	-	VEH. RECALL	-	-	-	VEH. RECALL	-	-
Dual Entry	-	-	-	X	-	-	-	X
Simultaneous Gap	X	X	X	X	X	X	X	X

\* These values may be field adjusted. Do not adjust Min Green and Extension times for phases 2 and 6 lower than what is shown. Min Green for all other phases should not be lower than 4 seconds.



Signal Revision

DOCUMENT NOT CONSIDERED FINAL UNLESS ALL SIGNATURES COMPLETED

Revision Seal

Prepared for: Transportation Mobility and Safety Division, STATE OF NORTH CAROLINA, Signal Design Section

750 N. Greenfield Pkwy, Garner, NC 27529

NC 130 (Love Mill Road) at SR 1973 (Leslie Newsome Ave.) / Entrance to Lowe's

Division 6 Columbus County Whiteville

PLAN DATE: January 2014 REVIEWED BY: JPG

PREPARED BY: Jeff Spence REVIEWED BY:

REVISIONS: Controller changed to ASC/3 with new cabinet. INIT: JGM DATE: 05/15/20

SEAL

Not a certified document. This document originally issued and sealed by Jason P. Galloway, P.E., no. 29904 on (2/03/14). This document shall not be considered a certified document.

SIGNATURE: DATE: SIG. INVENTORY NO. 06-1273

**SEPI** Engineering & Construction, Inc.

1 Glenwood Avenue Raleigh, NC 27603 Tel: 919.789.9977 Fax: 919.789.9591 License: C-2197